

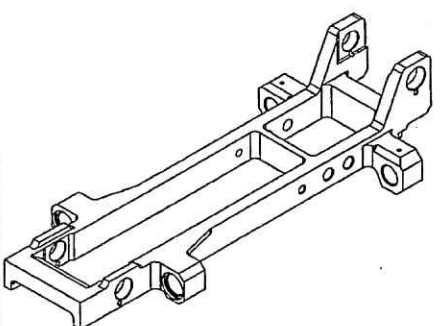
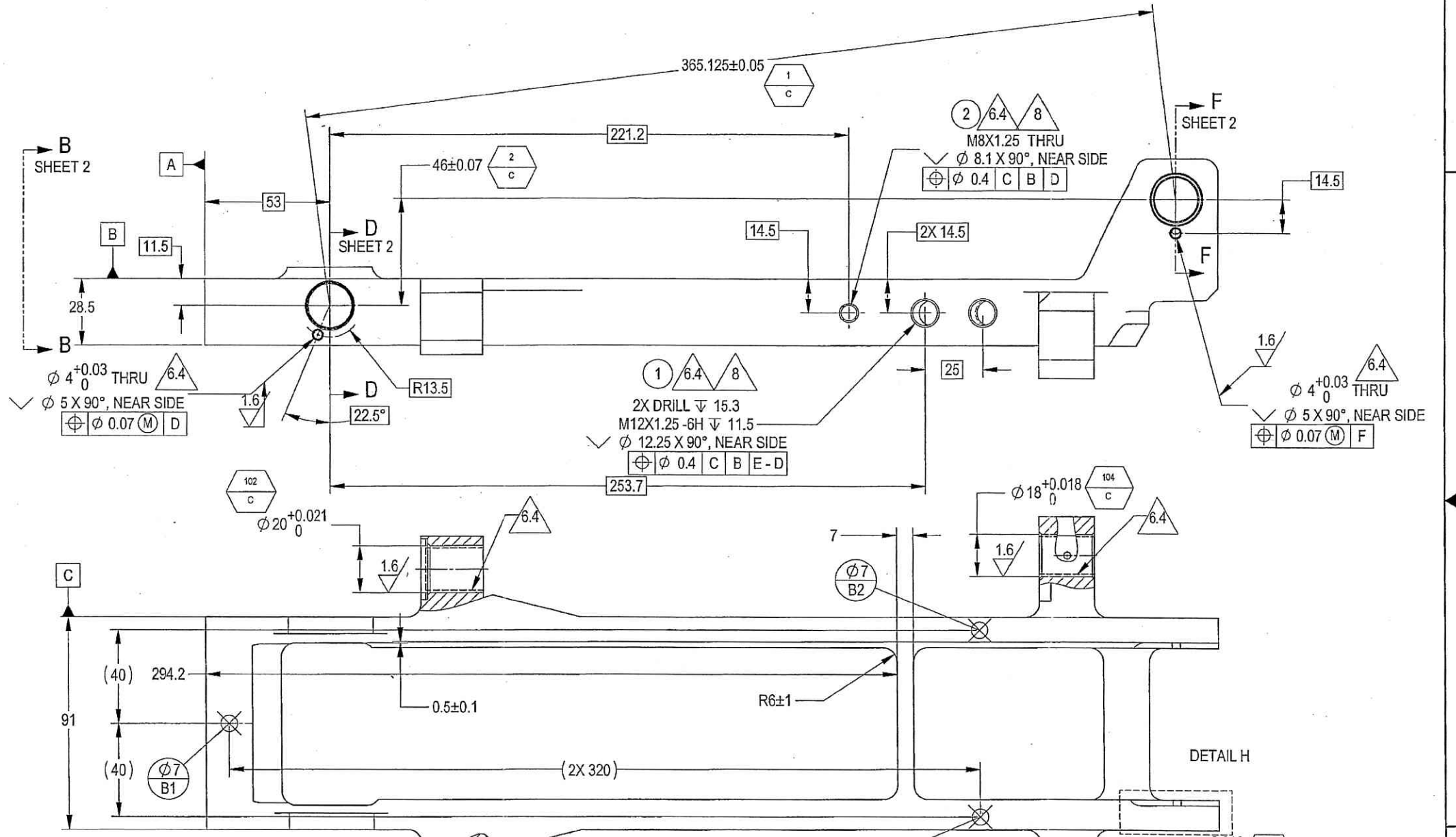
7490312801, 41865

THIS DOCUMENT AND THE INFORMATION CONTAINED IN IT ARE PROPRIETARY AND CONFIDENTIAL TO OFT. NO PERSON OR ENTITY IS ALLOWED TO COPY, REPRINT, REPRODUCE OR PUBLISH ANY PART OF THIS DOCUMENT, NOR DISCLOSE ITS CONTENTS TO OTHERS, NOR MAKE ANY USE OF IT, NOR ALLOW OR ASSIST OTHERS TO MAKE ANY USE OF IT UNLESS BY THE PRIOR WRITTEN EXPRESS AUTHORIZATION OF OFT AND THEN ONLY TO THE EXTENT AUTHORIZED.  
COPYRIGHT-CFT.

SHEET REV STATUS  
ALL SHEETS ARE THE SAME REVISION

DWG		SH		1	
REV	ECO	DESCRIPTION	DATE	APVD	
01		Freeze	24-Oct-17	E. Reshef	
02	2 Rework	Freeze	14-Nov-17	Y. Shalita	
03		Freeze	28-Feb-18	G. Yampolsky	
04	Identical To Prev/om	Released	08-Apr-18	L. Goldstein	

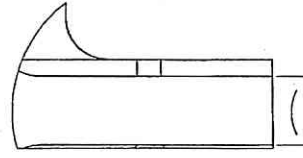
- NOTES:
- INTERPRET THIS DRAWING IAW ASME Y14.100M.
  - MATERIAL: ALUM. ALLOY PLATE 6061-T651 PER AMS-QQ-A-250/11.
  - UNLESS OTHERWISE SPECIFIED, UNDEFINED MACHINED FILLET RADII SHALL BE 0.3 MAX.
  - DEBURR AND REMOVE SHARP EDGES, APPROX. 0.2X45 Deg.
  - GENERAL TOLERANCES ACCORDING TO ISO 2768-m.
  - FINISH:
    - CHEMICAL CONVERSION COATING PER MIL-DTL-5541F TYPE I CLASS 3.
    - ANODIC COATING PER MIL-A-8625 TYPE II 15 TO 25 MICRON THICK CLASS 1.
    - A DRY FILM LUBRICATION IN A FLUOROPOLYMER ORGANIC RESIN SOLVENT COLOR BLACK CLASS 1 TYPE 2, 25-35 MICRON THICK PER VS-1-3-1-185 (OR EQUIVALENT).
  - PROTECT MARKED AREA (—), THREADS AND DEFINED HOLES AGAINST ANODIC COATING.
  - AREAS MARKED BY , SPECIFIED THREADS AND HOLES MUST BE PROTECTED FROM BLACK-T.
  - PARENTHEetical FIGURES ARE FOR REFERENCE ONLY.
  - INSTALL INSERTS AFTER FINISH IAW MS51830 USING PRIMER PER MIL-PRF-23377 TYPE I CLASS C2.
  - QUALITY ASSURANCE PROVISIONS:
    - QUALITY ASSURANCE PROVISIONS FOR THIS ITEM PER RDMQD00012P.
    - MAJOR CHARACTERISTICS NRS 101 TO 112.
    - CRITICAL CHARACTERISTICS NRS 1 TO 2.
  - PACKAGING AND PACKING: THE FINISHED PART SHALL BE PRESERVED AND PACKAGED IN ACCORDANCE WITH MANUFACTURER'S BEST COMMERCIAL PRACTICE.
  - IDENTIFY PER MIL-STD-130 PARA 4.1.B, BY LABELING ITS CONTAINER WITH THE PART NUMBER. CHARACTERS 3.2 MM HIGH.



(WEIGHT: 1.45 Kg APPROX.)

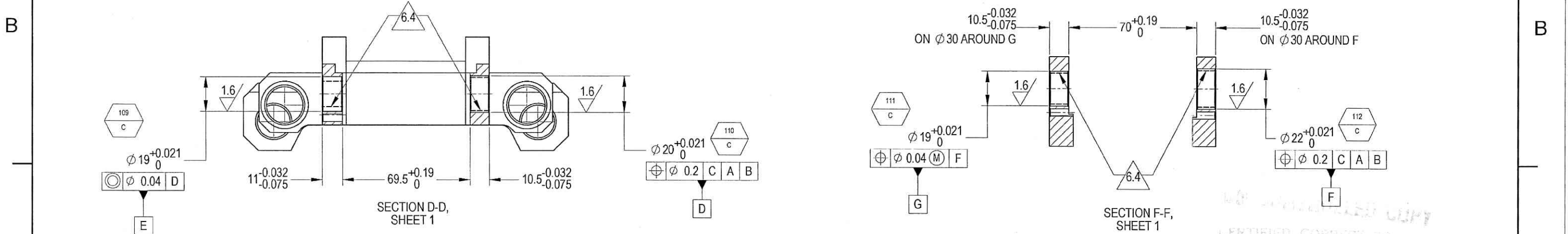
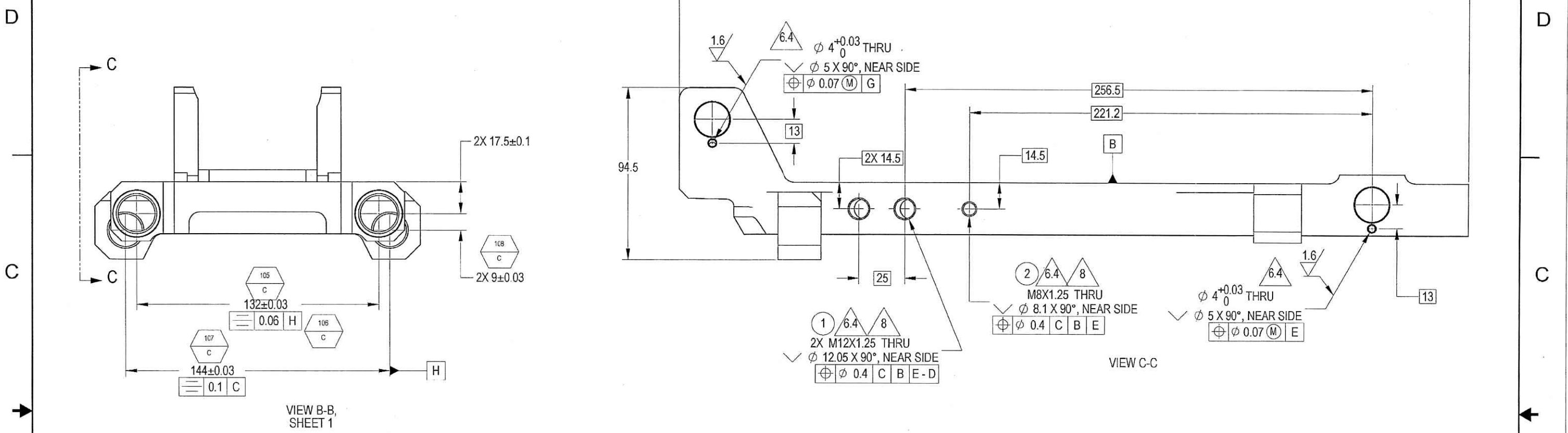
MP UNDRILLED COPY  
CERTIFIED CORRECT COPY OF APPROVED DRAWINGS AT THIS DATE: 30-11-2020

Design & Drawing Office  
Ordnance Factory,  
Tiruchirappalli, 620015



DETAIL H  
OPTIONAL STEP ALLOWED

UNLESS OTHERWISE SPECIFIED		SIGNATURE		DATE	
DIMENSIONS ARE IN MM PER ASME Y14.5 - 2009		DRAWN			
TOLERANCES		CHECKED			
LINEAR	ANGULAR	HOS/DDO			
SEE NOTE 5   SEE NOTE 5		OFFICER/PRODN			
1st ANGLE PROJECTION		OFFICER/CC			
		OFFICER/D/O			
PROJECT OFFICER		SURFACE TEXTURE IN MicroMETER			
		ORDNANCE FACTORY TIRUCHIRAPPALLI		TITLE CRADLE MOBILE	
		FOR: CRADLE MOBILE ASSY		OF: 12.7MM SRCG	
SIZE D	CAGE CODE 2291A	DWG NO Y17323A-00	REV -		
SCALE 1:1		AUTOMATED DRAWING (SW)		SHEET 1 OF 3	
PLM Control		Y17323A-00			



NOT APPROVED COPY  
 CERTIFIED CORRECT COPY  
 OF APPROVED DRAWINGS  
 AT THIS DATE 30.11.2020

Design & Drawing Office  
 Gudimaru Factory,  
 Tiruchirappalli-620018.

SIZE	CAGE CODE	DWG NO	REV
D	2291A	Y17323A-00	--
SCALE 1:1	AUTOMATED DRAWING (SW)		SHEET 2 OF 3

PLM Control

8

7

6

5



4

3

DWG Y17323A-00

SH 3

1

D

D

C

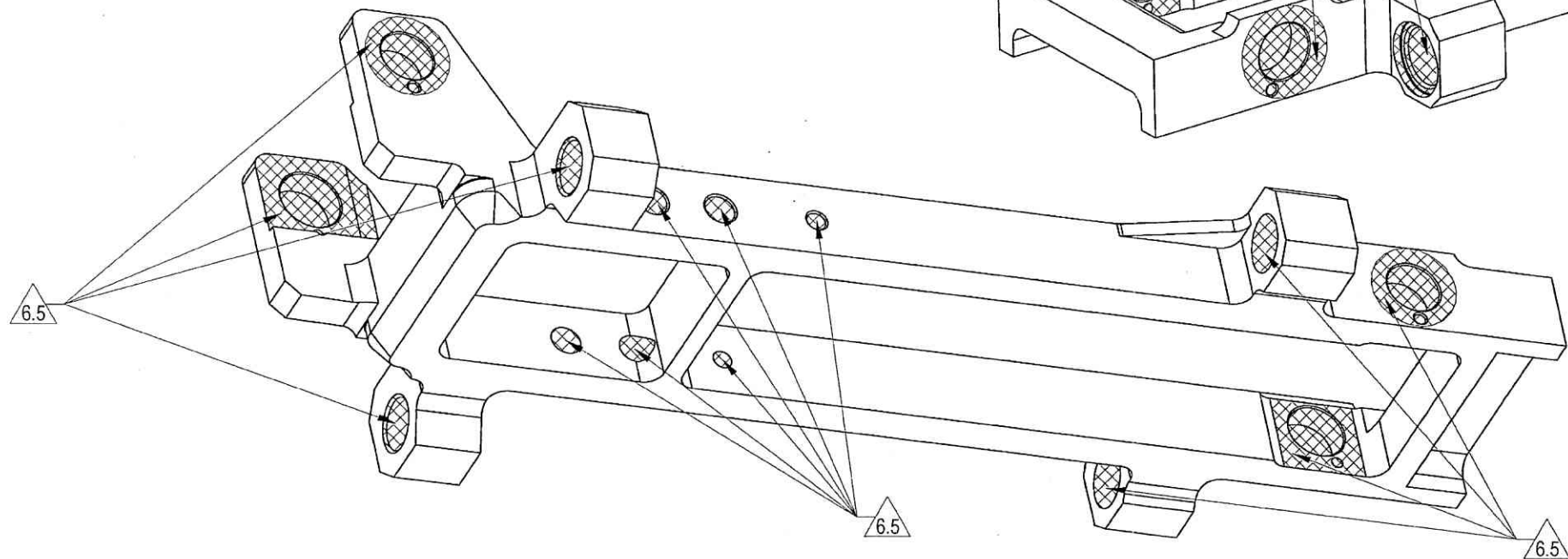
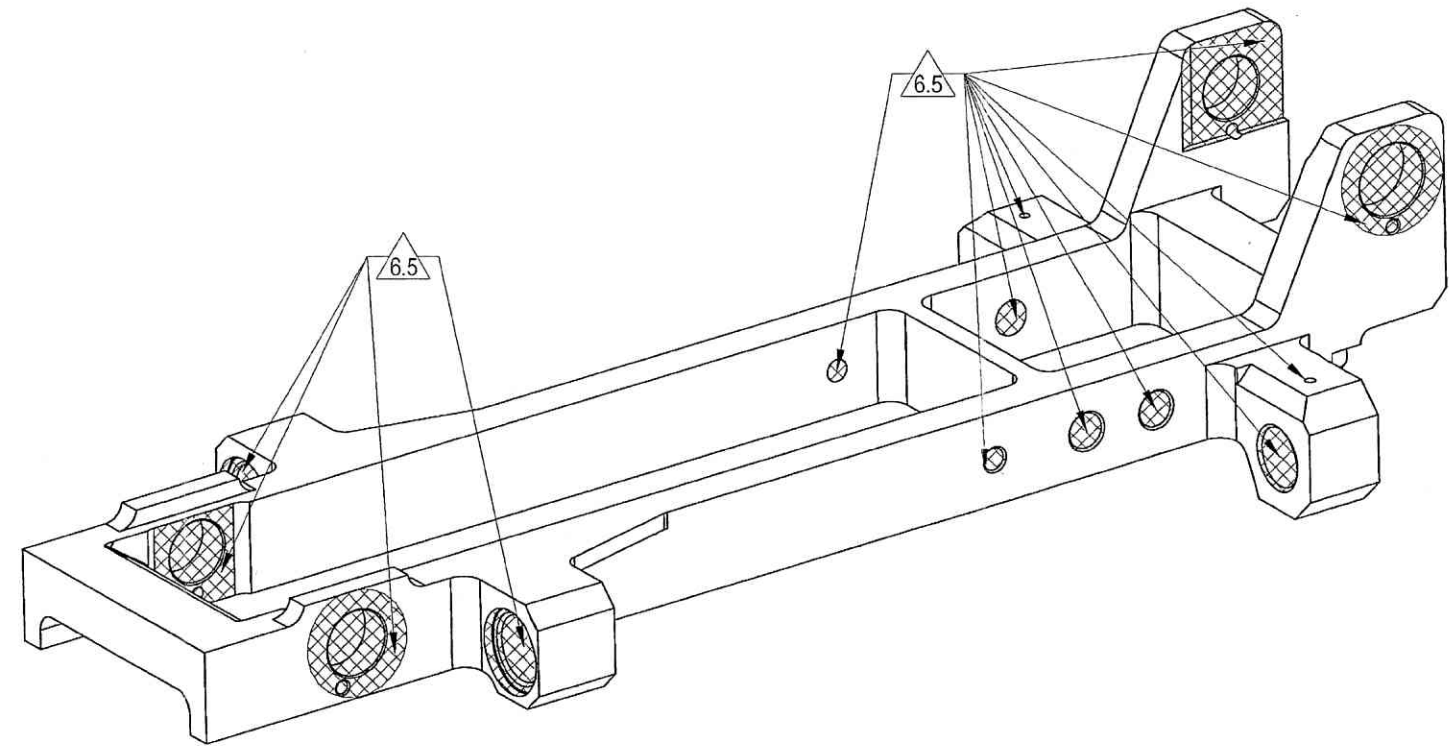
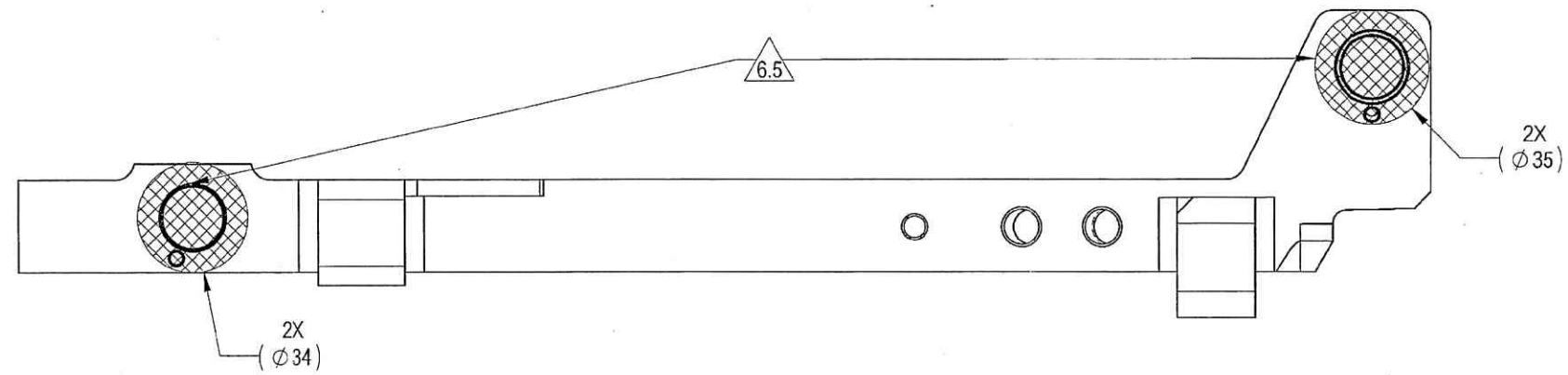
C

B

B

A

A



ALL INFORMATION COPY

CERTIFIED CORRECT COPY  
OF APPROVED DRAWINGS  
BY THIS DATE: 30-11-2020

*[Signature]*  
Design & Drawing Office  
Chennai Factory,  
No. 100/101/102/103/104/105/106/107/108/109/110/111/112/113/114/115/116/117/118/119/120/121/122/123/124/125/126/127/128/129/130/131/132/133/134/135/136/137/138/139/140/141/142/143/144/145/146/147/148/149/150/151/152/153/154/155/156/157/158/159/160/161/162/163/164/165/166/167/168/169/170/171/172/173/174/175/176/177/178/179/180/181/182/183/184/185/186/187/188/189/190/191/192/193/194/195/196/197/198/199/200/201/202/203/204/205/206/207/208/209/210/211/212/213/214/215/216/217/218/219/220/221/222/223/224/225/226/227/228/229/230/231/232/233/234/235/236/237/238/239/240/241/242/243/244/245/246/247/248/249/250/251/252/253/254/255/256/257/258/259/260/261/262/263/264/265/266/267/268/269/270/271/272/273/274/275/276/277/278/279/280/281/282/283/284/285/286/287/288/289/290/291/292/293/294/295/296/297/298/299/300/301/302/303/304/305/306/307/308/309/310/311/312/313/314/315/316/317/318/319/320/321/322/323/324/325/326/327/328/329/330/331/332/333/334/335/336/337/338/339/340/341/342/343/344/345/346/347/348/349/350/351/352/353/354/355/356/357/358/359/360/361/362/363/364/365/366/367/368/369/370/371/372/373/374/375/376/377/378/379/380/381/382/383/384/385/386/387/388/389/390/391/392/393/394/395/396/397/398/399/400/401/402/403/404/405/406/407/408/409/410/411/412/413/414/415/416/417/418/419/420/421/422/423/424/425/426/427/428/429/430/431/432/433/434/435/436/437/438/439/440/441/442/443/444/445/446/447/448/449/450/451/452/453/454/455/456/457/458/459/460/461/462/463/464/465/466/467/468/469/470/471/472/473/474/475/476/477/478/479/480/481/482/483/484/485/486/487/488/489/490/491/492/493/494/495/496/497/498/499/500/501/502/503/504/505/506/507/508/509/510/511/512/513/514/515/516/517/518/519/520/521/522/523/524/525/526/527/528/529/530/531/532/533/534/535/536/537/538/539/540/541/542/543/544/545/546/547/548/549/550/551/552/553/554/555/556/557/558/559/560/561/562/563/564/565/566/567/568/569/570/571/572/573/574/575/576/577/578/579/580/581/582/583/584/585/586/587/588/589/590/591/592/593/594/595/596/597/598/599/600/601/602/603/604/605/606/607/608/609/610/611/612/613/614/615/616/617/618/619/620/621/622/623/624/625/626/627/628/629/630/631/632/633/634/635/636/637/638/639/640/641/642/643/644/645/646/647/648/649/650/651/652/653/654/655/656/657/658/659/660/661/662/663/664/665/666/667/668/669/670/671/672/673/674/675/676/677/678/679/680/681/682/683/684/685/686/687/688/689/690/691/692/693/694/695/696/697/698/699/700/701/702/703/704/705/706/707/708/709/710/711/712/713/714/715/716/717/718/719/720/721/722/723/724/725/726/727/728/729/730/731/732/733/734/735/736/737/738/739/740/741/742/743/744/745/746/747/748/749/750/751/752/753/754/755/756/757/758/759/760/761/762/763/764/765/766/767/768/769/770/771/772/773/774/775/776/777/778/779/780/781/782/783/784/785/786/787/788/789/790/791/792/793/794/795/796/797/798/799/800/801/802/803/804/805/806/807/808/809/810/811/812/813/814/815/816/817/818/819/820/821/822/823/824/825/826/827/828/829/830/831/832/833/834/835/836/837/838/839/840/841/842/843/844/845/846/847/848/849/850/851/852/853/854/855/856/857/858/859/860/861/862/863/864/865/866/867/868/869/870/871/872/873/874/875/876/877/878/879/880/881/882/883/884/885/886/887/888/889/890/891/892/893/894/895/896/897/898/899/900/901/902/903/904/905/906/907/908/909/910/911/912/913/914/915/916/917/918/919/920/921/922/923/924/925/926/927/928/929/930/931/932/933/934/935/936/937/938/939/940/941/942/943/944/945/946/947/948/949/950/951/952/953/954/955/956/957/958/959/960/961/962/963/964/965/966/967/968/969/970/971/972/973/974/975/976/977/978/979/980/981/982/983/984/985/986/987/988/989/990/991/992/993/994/995/996/997/998/999/1000

SIZE D	CAGE CODE 2291A	DWG NO Y17323A-00	REV --
SCALE 1:1	AUTOMATED DRAWING (SW)		SHEET 3 OF 3

PLM Control

8

7

6

5



4

3

2

1

OFT

ASSEMBLY PARTS LIST

Assembly Parts List For: Y17323A-00  
Status: Released

Rev: -  
Description: CRADLE MOBILE

FN	CMD	PART NUM	ECO	DESCRIPTION	MB	QTY	U/M	REF. DES./REMARKS	MFG. PN / CUSTOMER	LA	LI
1	HM	34265907M		INSERT CRES N/L M8X1.25	P	4	Each		60328-KNM8X1.25		
2	HM	34265908M		INSERT CRES N/L M5X0.8 LT	P	2	Each		60328-KNM5X0.8		

UN CONTROLLED COPY

CERTIFIED CORRECT COPY  
OF APPROVED DRAWINGS  
AS OF THIS DATE: 30-11-2020

Design & Drawing Office  
Teluk Anson Factory  
Teluk Anson 11-820018