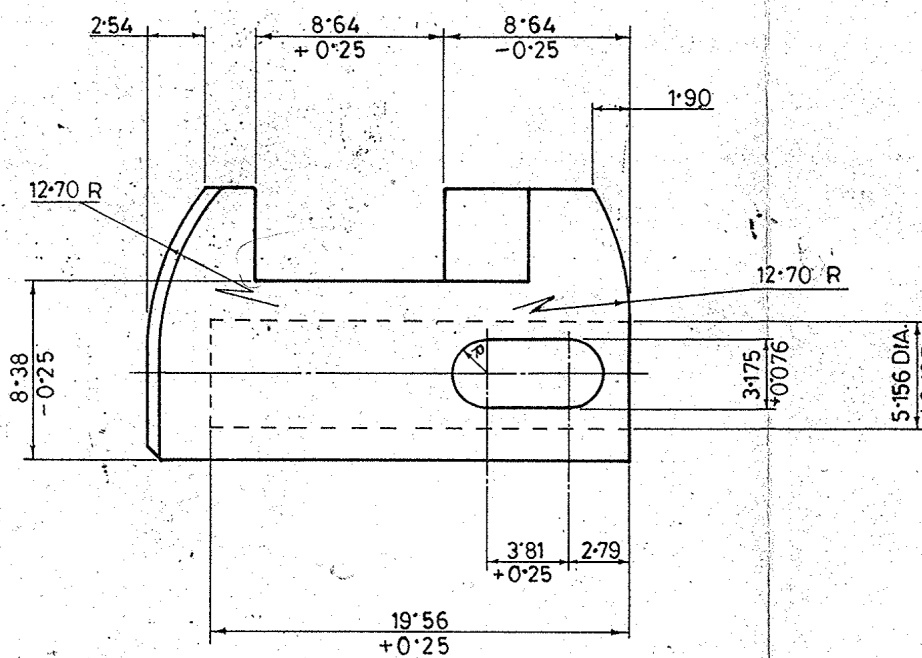
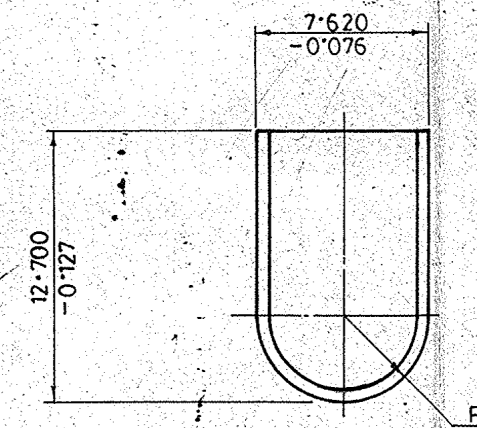
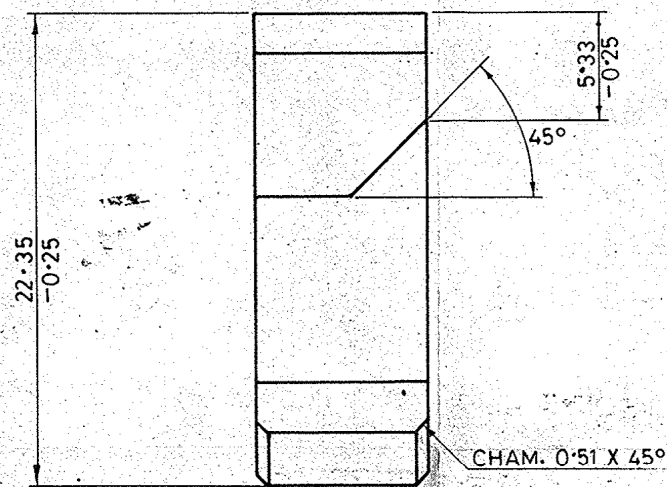


NOTE:  
WHERE TOLERANCES ARE NOT SHOWN:  
DIMENSIONS WITH TWO DECIMAL PLACES  $\pm 0.127$  mm.

MATERIAL:-  
STEEL B S 970 PT.1:1983 GR. 070 M 55

ALT. MATERIAL:-  
IS:5517-78 Gr. 55 C8  
HARDENED & TEMPERED CONDITION.



4/8/04

ICR 1393  
METRIC

DRN.		CHD.	TRD. <i>Mhanna</i>	COMP. <i>d. rath</i>	AHSP CQA(SA), ICHAPUR
SCALE: 4:1		EST. MASS.		APPROVED. DT. 26-6-67.	ASSY. ICR 62 A 1005-001747, 1005-001719
19.8.2002.	25471-SA	PROFORMA CHANGED, PROTECTIVE FINISH AMENDED, NEGATIVE RE-TRACED AND DRG. RE-SEALED.		DT. 19.8.2002.	I/C, D.O. (NEG. RE-TRACED)
PREVIOUS D.C. No. 14799-SA, 17151-SA, 22073-SA, 22982-SA & 23374-SA.		SIGN.		MATERIAL: AS STATED	DG NR'S REF. ARDE 929/7
DATE AUTHY.	BRIEF RECORD	ZONE I/C, D.O.	G.O.	H.T./HARDNESS: 400 - 450 H.V.	PART NO.
SEALED: D.C.14799-SA, DT. 22.9.76.		SIGN.		PROTECTIVE FINISH: PHOSPHATE TO SPECN. JSS 0465-01:1994 CLASS I PAINT PFU STOVING BLACK TO SPECN. CS 2383	DRG. NO.
NOMENCLATURE: CATCH					D.S. CAT. NO. 5340-015119