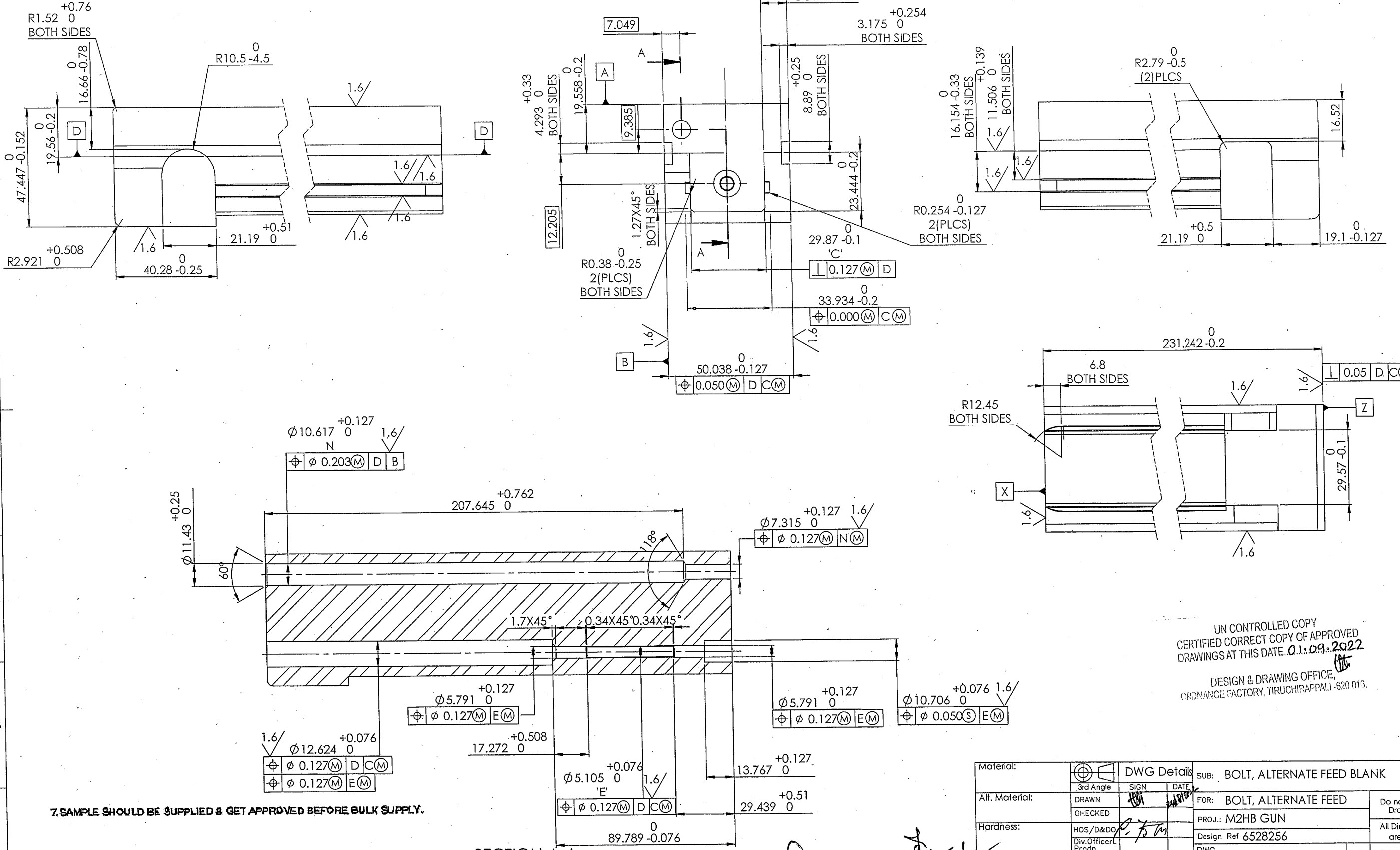


- NOTES:  
 1. ASME Y14.5M-1994 APPLIES.  
 2. MATERIAL: ALLOY STEEL BAR, ASTM A331 OR A322, GRADE E4340  
 3. HEAT TREATMENT: AFTER ROUGH MACHINING, STRESS RELIEVE AT 566 °C MINIMUM FOR ONE HOUR.  
 4. SURFACE FINISH  $\frac{3.2}{\sqrt{R}}$  EXCEPT AS NOTED.  
 5. CENTER LINE LOCATING ANGLES IS PARALLEL TO -B-.  
 6. BREAK EDGES 0.076 +0.304 UNLESS OTHERWISE SPECIFIED.



7. SAMPLE SHOULD BE SUPPLIED & GET APPROVED BEFORE BULK SUPPLY.

SECTION A-A

*[Signature]*  
 PROJECT OFFICER

*[Signature]*  
 HOS/PS6

UN CONTROLLED COPY  
 CERTIFIED CORRECT COPY OF APPROVED  
 DRAWINGS AT THIS DATE. 01.09.2022  
 DESIGN & DRAWING OFFICE,  
 ORDNANCE FACTORY, TIRUCHIRAPPALLI-620 016.

Material:	DWG Details		SUB: BOLT, ALTERNATE FEED BLANK	
Alt. Material:	3rd Angle	SIGN	DATE	FOR: BOLT, ALTERNATE FEED
Checked:	DRAWN	<i>[Signature]</i>	<i>[Signature]</i>	Do not scale Drawing
Hardness:	CHECKED			PROJ.: M2HB GUN
Finish:	HOS/D&DO	<i>[Signature]</i>		Design Ref 6528256
Un tolerated dimensions IS:2102 Medium	Div. Officer, Prodn			DWG. No.: TEND-2670
	Div. Officer QC			A3 QPG -
	Div. Officer DDO			ORDNANCE FACTORY TIRUCHIRAPPALLI-16.
				Wt. (Appx) gm
				SHEET: 1 OF 1