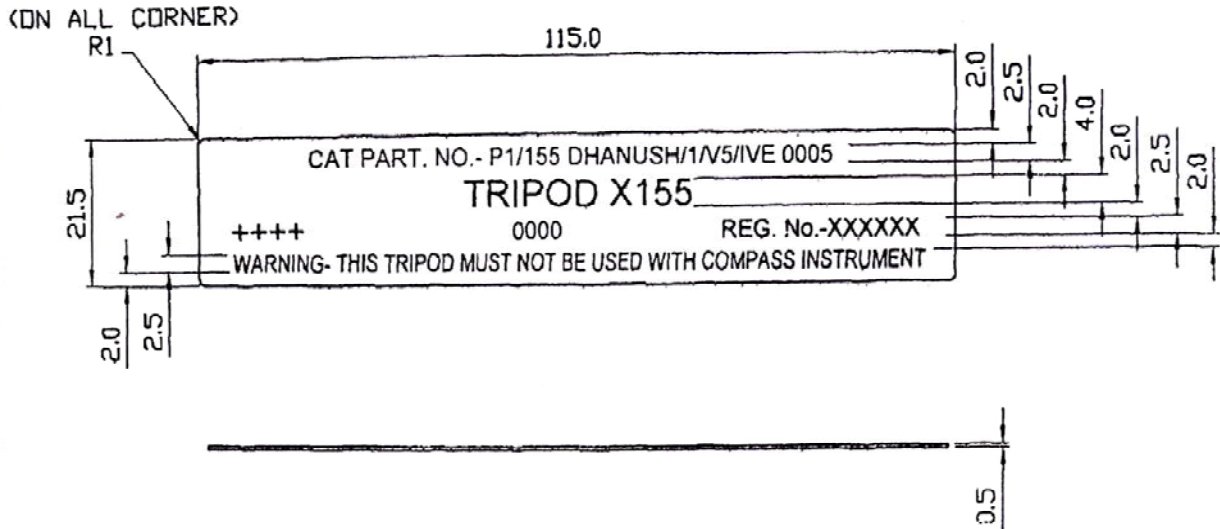


# TRIPOD X-155

## PLATE IDENTIFICATION

(1) FOR EXPLANATION OF DIMENSIONS ETC., SEE COAC(1) GUIDE NO.- 001-2016  
 (3) THIRD ANGLE PROJECTION

(2) ALL DIMENSIONS ARE IN MILLIMETERS.



++++ MANUFACTURER INITIAL  
 0000 YEAR OF THE SUPPLY  
 XXXXXX REGISTRATION No.

**NOTE :-** (1) ALL LETTERS AND FIGURES TO BE PHOTOPRINTED ON ANODISED PLATE IN WHITE COLOUR AND BACKGROUND TO BE BLACK.  
 (2) THE PLATE TO BE GIVEN RADIUS R28 AFTER PHOTOPRINTING AS SHOWN BELOW.

CAT PART. NO.- P1/155 DHANUSH/1/V5/IVE 0005  
**TRIPOD X155**  
 ++++ 0000 REG. No.-XXXXXX  
 WARNING- THIS TRIPOD MUST NOT BE USED WITH COMPASS INSTRUMENT



FOR TRADE ONLY  
 Date of Issue 14/01/19

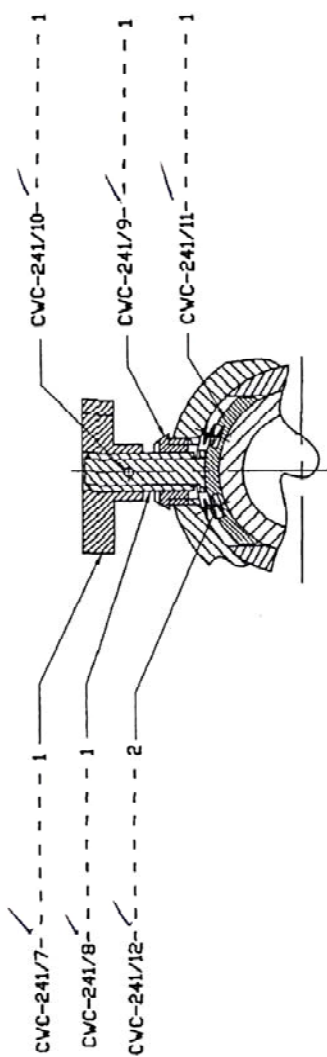
**MATL :-** AL. ALLOY SHEET, Gde- 64430, T6 TO IS:737-2008  
**FINISH :-** CLEANED

			DT.-27.02.19	SCALE: 1:1
			DR.- R.K.SHARMA	MATL. FINISH
			TR.-	AS ABOVE AS ABOVE
			CH.-	SHEETS-1 SHTNO.-1
DC: 2908-I (P) DRG PROV SEALED	25-3-19		APPROVED	
AMENDMENTS.	DATE	SIG	[KULDEEP SAINI] JWH/DO.	[S.BHASKAR] WM/Opt.
OF D/DO/002			DRAWING No.- CWC-241/33	

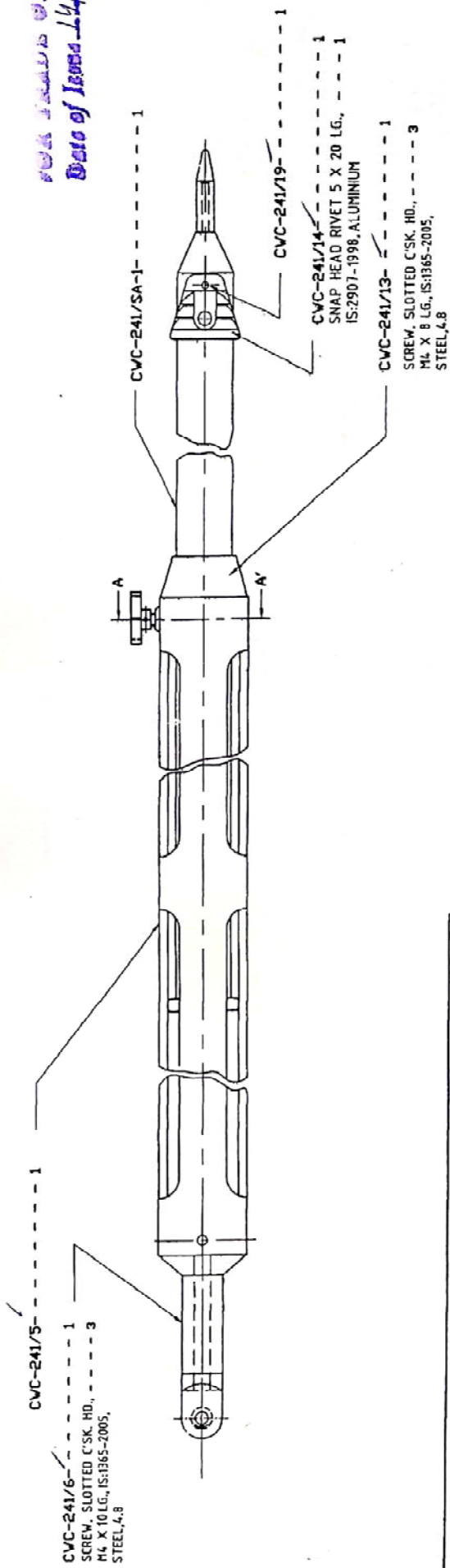
ORDNANCE FACTORY, DEHRADUN.

DC: 2908-I (P)

DC: 2908-1 (P)



PART SECTION VIEW FROM A-A  
SCALE- 1:1



FOR ISSUED ON 24  
Date of Issue 14/01/20

CVC-241/6  
SCREW, SLOTTED C'SK. HD.,  
M4 X 10 LG., IS:1365-2005,  
STEEL, 4.8

CVC-241/14  
SNAP HEAD RIVET 5 X 20 LG.,  
IS:2907-1998, ALUMINIUM

CVC-241/13  
SCREW, SLOTTED C'SK. HD.,  
M4 X 8 LG., IS:1365-2005,  
STEEL, 4.8

(1) FOR EXPLANATION OF DIMENSIONS ETC., SEE COA (I) GUIDE NO.- 001-2016 (2) ALL DIMENSIONS ARE IN MILLIMETERS.  
(3) THIRD ANGLE PROJECTION

DR. P.C.SINGH  
TR.  
CH. *[Signature]* APPROVED  
*[Signature]* 25/3/17  
JUN/100

ORDNANCE  
FACTORY  
DEHRADUN

TRIPOD X-155  
LEG, ASSEMBLED

DT.-25.07.18	SCALE-	FINISH
	MAIL.	AS ABOVE
	AS ABOVE	SHEETS. 1
		SHEET NO. 1

DC: 2908-1 (P)	25-3-17	
DIR. PROV. SECTD		
AMENDMENTS	DATE	SIG
	06/01/2002	

DRAWING NO.  
CWC-241/A-1

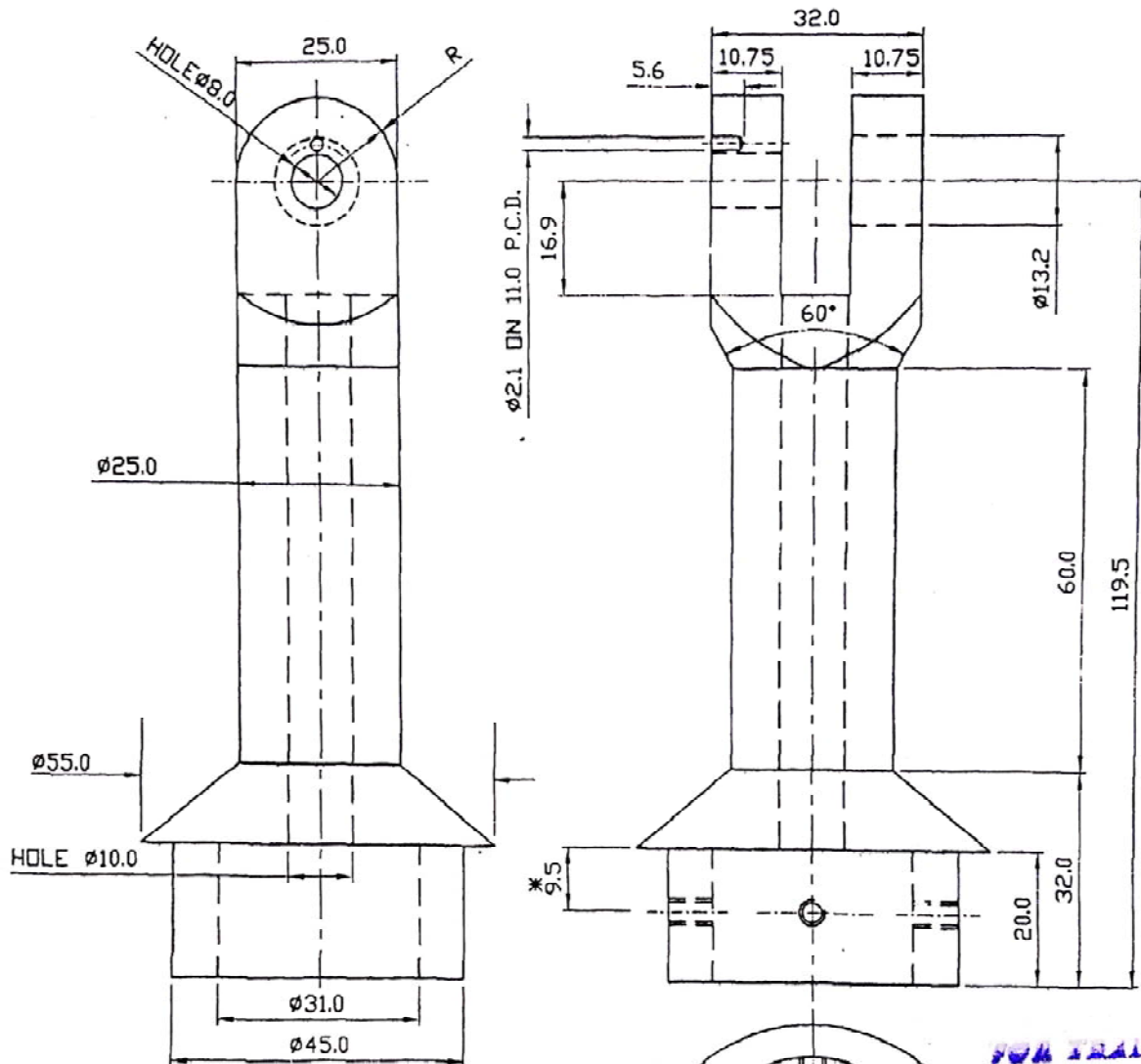


# TRIPOD X-155 ADAPTOR - TOP

(1) FOR EXPLANATION OF DIMENSIONS ETC., SEE CQA(II) GUIDE NO.- 001-2016  
(3) THIRD ANGLE PROJECTION

(2) ALL DIMENSIONS ARE IN MILIMETERS.

ORDNANCE FACTORY, DEHRADUN.



(TO BE EASY SUIT WITH LEG UPPER)

3-TAPPED HOLES M4 EQUISPACED  
\* TO BE TRANSFERED THROUGH  
LEG UPPER.

**MATL-** AL. ALLOY ROD, IS:733-1983, 24345, WP  
**FINISH-** POWDER COATING, SERVICE COLOUR  
(ISC-220 OR 225 IS:5-2007)  
EXCEPT BEARING SURFACES

FOR TRADE USE  
Date of Issue 14/9/18

DC: 2908-I (P)

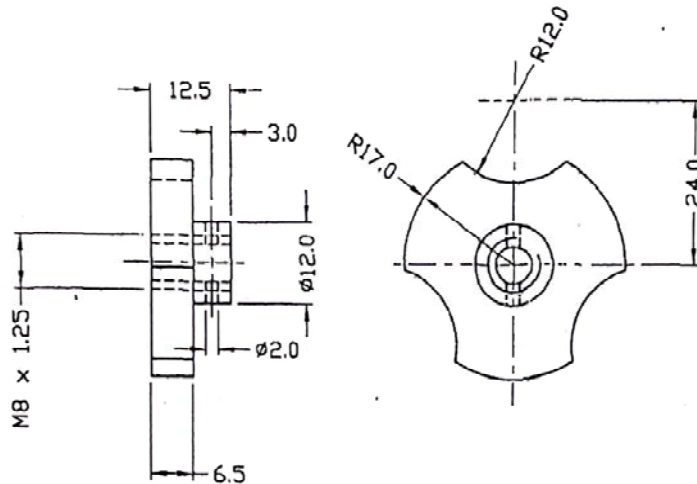
		DR.- P.C.SINGH		DT.-25.07.18		SCALE:1:1	
		TR.-		MATL.		FINISH	
		CH. <i>[Signature]</i>		AS ABOVE		AS ABOVE	
				SHEETS-1		SHTNO.-1	
DC: 2908-I (P)		25-3-19		APPROVED <i>[Signature]</i> [S.K.Thapliyal] JWM/DD.		DRAWING NO. CWC-241/6	
DRG PROV.-SEALED		DATE					
AMENDMENTS.		SIG		[S.Bhaskar] AWM/Dpt.			
OFD/DD/002							

# TRIPOD X-155 KNOB

(1) FOR EXPLANATION OF DIMENSIONS ETC., SEE CQA(I) GUIDE NO.- 001-2016  
(3) THIRD ANGLE PROJECTION

(2) ALL DIMENSIONS ARE IN MILIMETERS.

ORDNANCE FACTORY, DEHRADUN.



FOR TRADE COPY  
Date of Issue 14/01/2020  
*[Signature]*

MATL.- AL. ALLOY ROD, IS:733-1983, 24345, WP  
FINISH- POWDER COATING, SERVICE COLOUR  
(ISC-220 OR 225 IS:5-2007)

DC: 2908-I (P)

			DR.- P.C.SINGH	DT.-12.05.15	SCALE:1:1
			TR.-	MATL.	FINISH
			CH. <i>X</i>	AS ABOVE	AS ABOVE
				SHEETS-1	SHTNO.-1
DC: 2908-I (P) DRG PROV SEALED	25-3-19	<i>[Signature]</i>	APPROVED	DRAWING NO.	
AMENDMENTS.	DATE	SIG	<i>[Signature]</i>	CWC-241/7	
QFD/DO/002			[A. Singh] JWM/DD.	[T. Khattar] DGM/P	