

**PART No.**  
M 800870

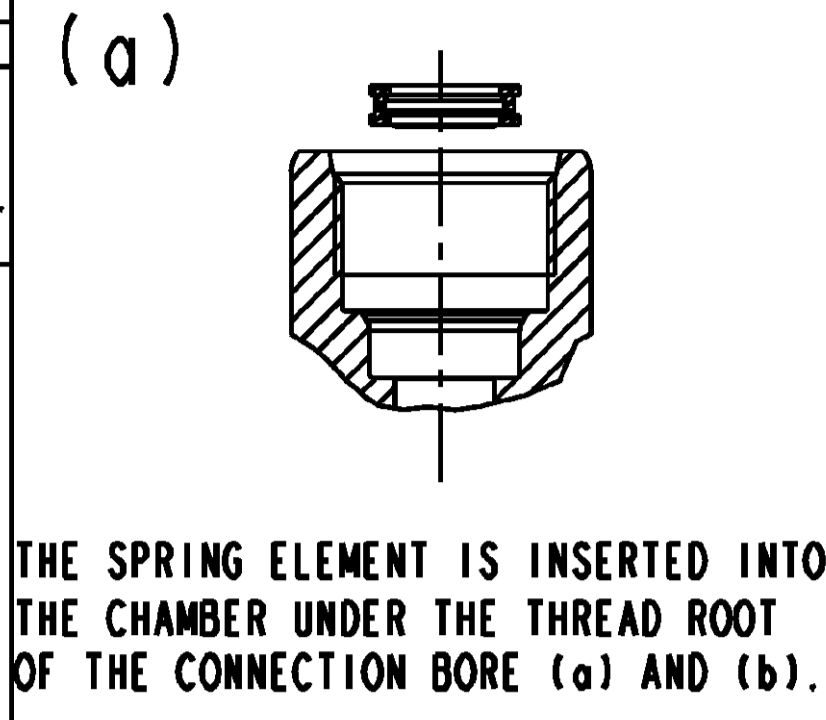
**ENGINEERING CHANGES**

ECN No.	DATE	REV	SIGN
10438	19.10.06	New	RBS
10569	25.01.07	1	MS

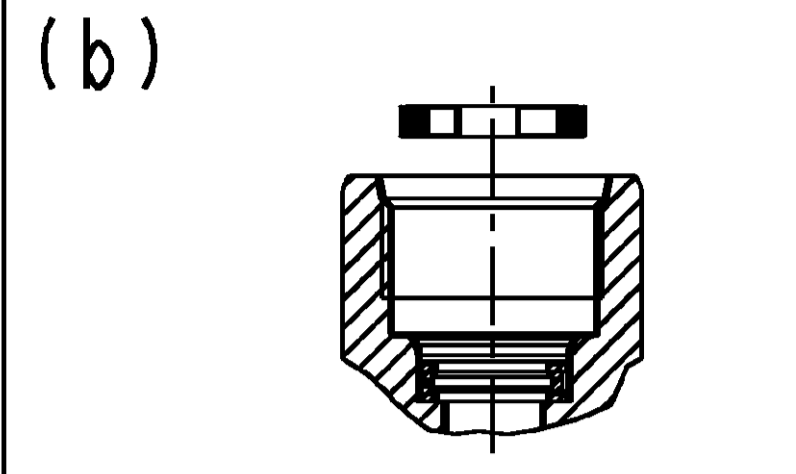
Repair kit details and Circuit diagram added. Notes revised as per TML requirement. PSSC Issue number updated. Drawing redrawn.

**ASSEMBLY PROCEDURE:**

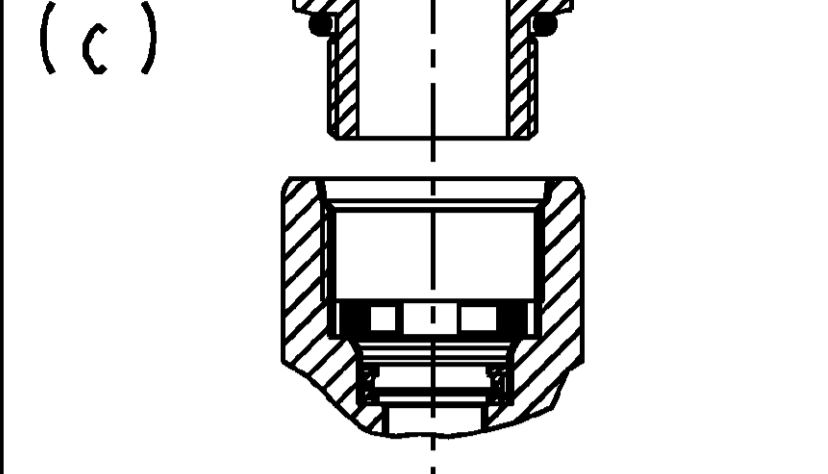
DO NOT SCALE IF IN DOUBT ASK



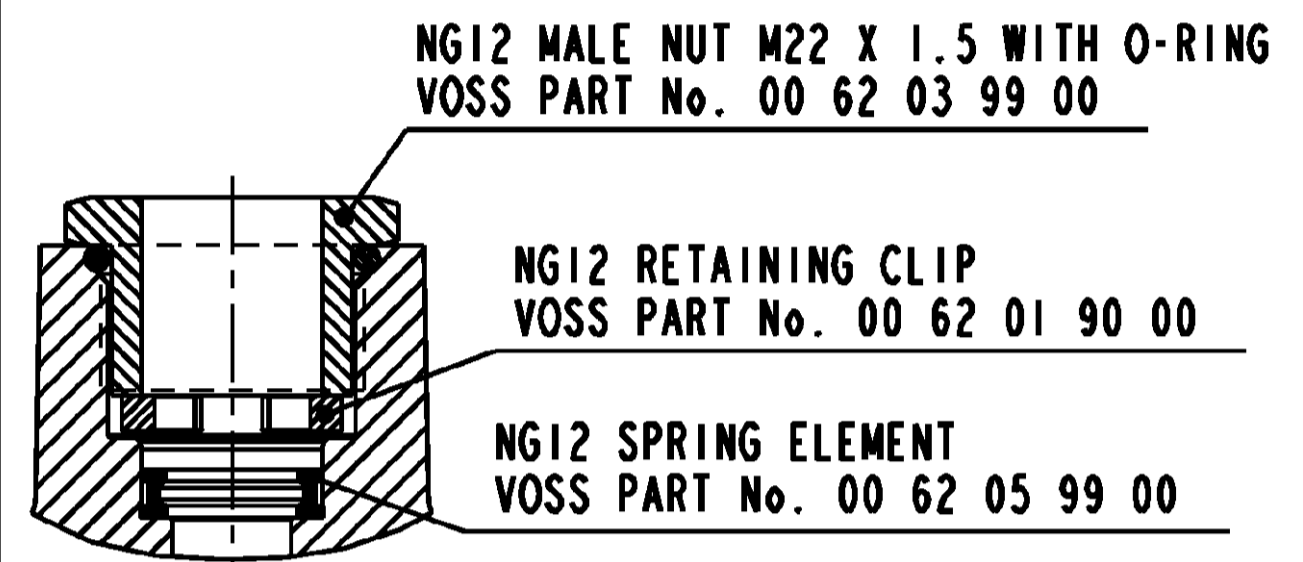
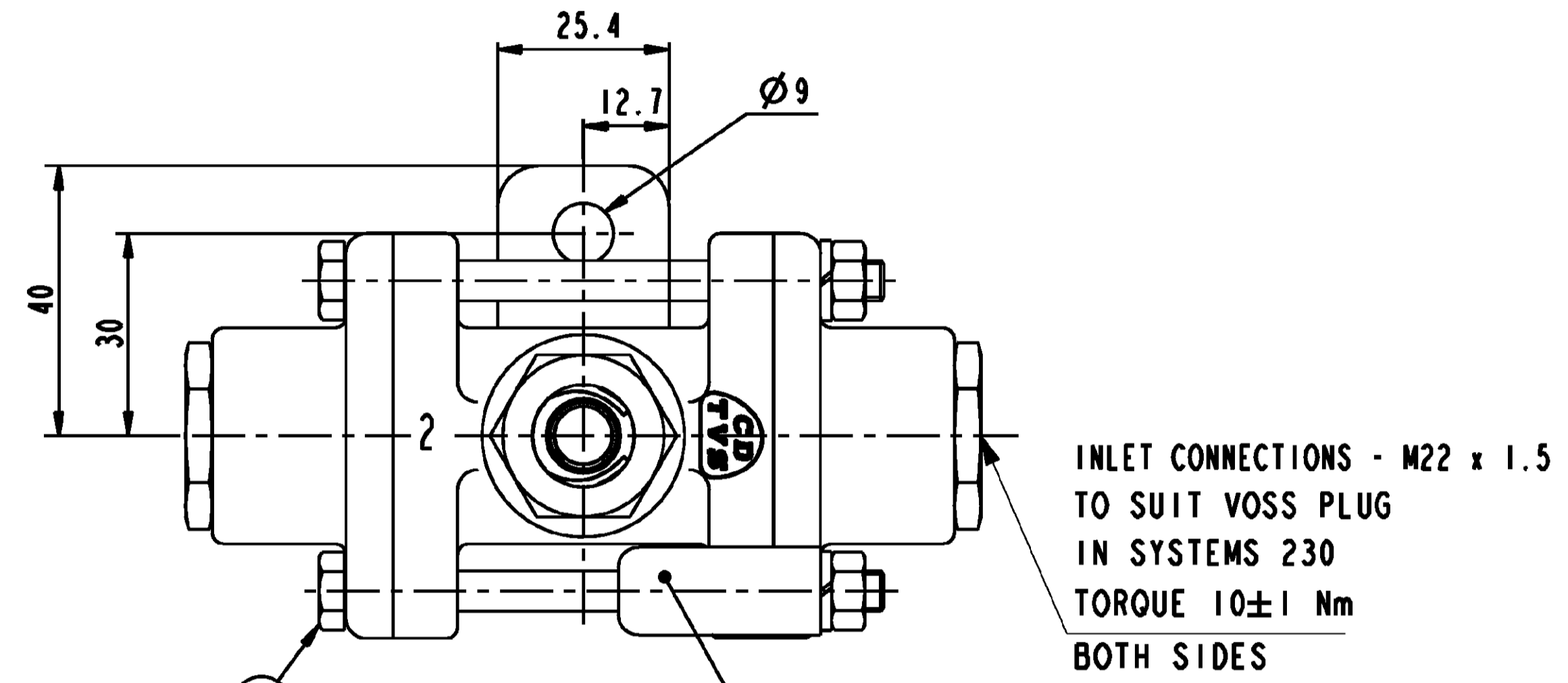
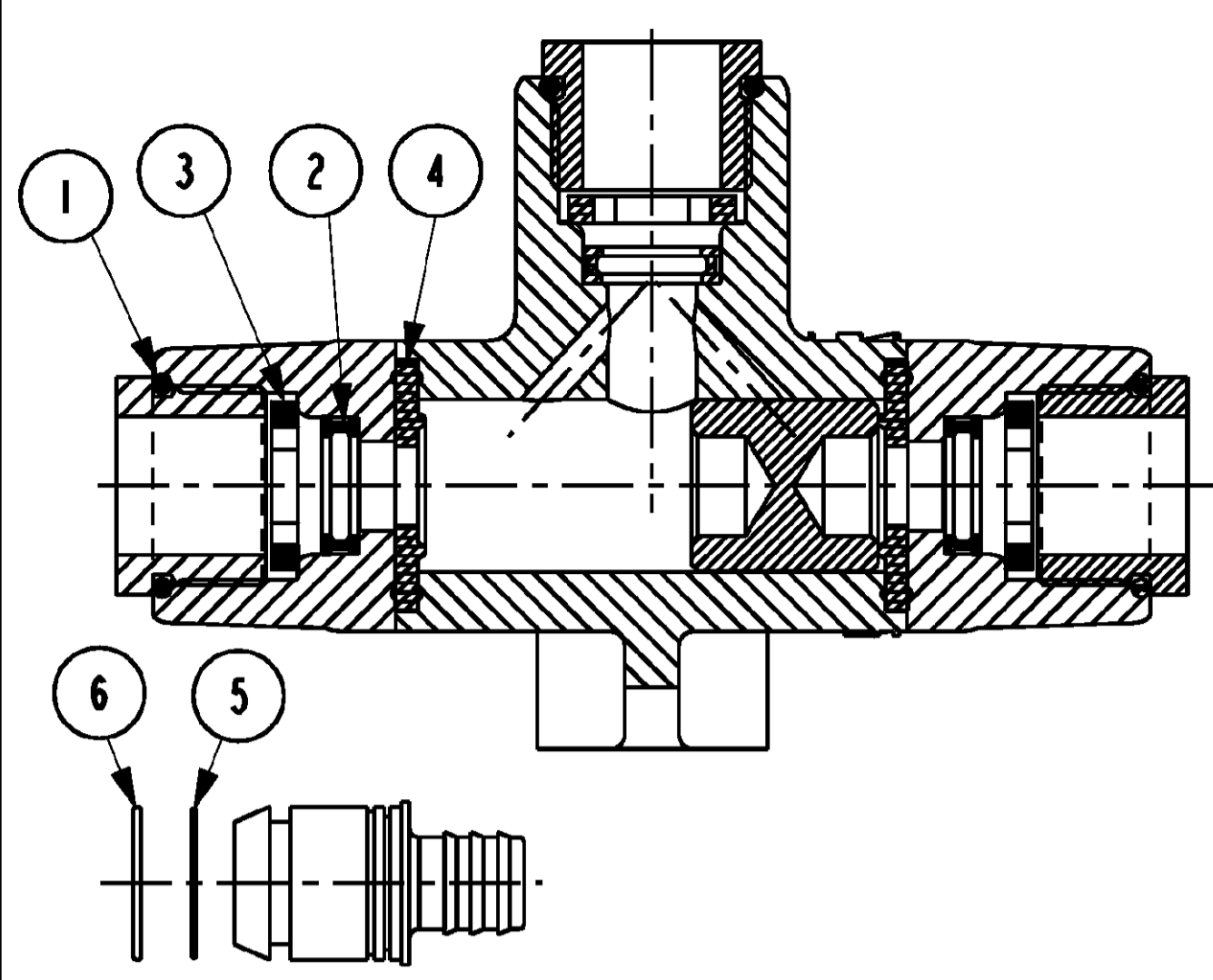
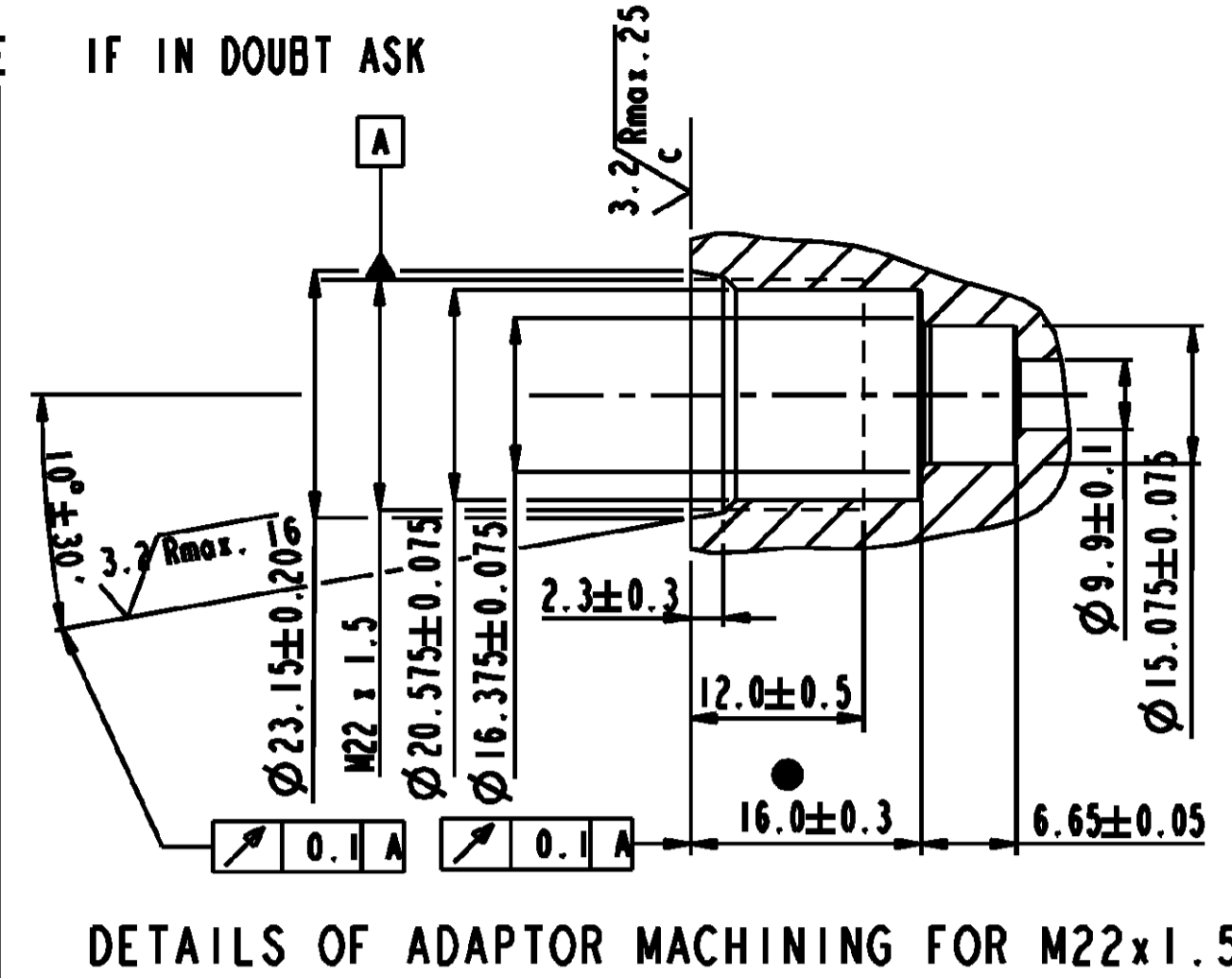
THE SPRING ELEMENT IS INSERTED INTO THE CHAMBER UNDER THE THREAD ROOT OF THE CONNECTION BORE (a) AND (b).



THE RETAINING CLIP IS INTRODUCED SO THAT IT RESTS FLAT ON THE THREAD ROOT (b) AND (c). THE SPRING ELEMENT AND RETAINING CLIP ARE SYMMETRICAL.



THE MALE FITTING PRE-ASSEMBLED WITH THE PRE-GREASED O-RING TO SEAL THE THREAD IS SCREWED BY HAND INTO THE TAPPED BORE (c) AND TIGHTENED.

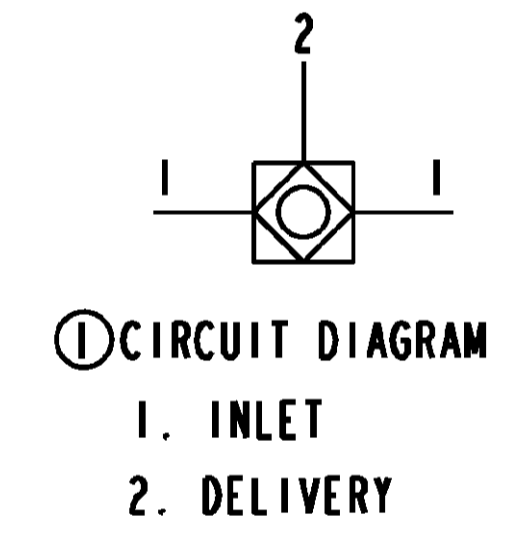
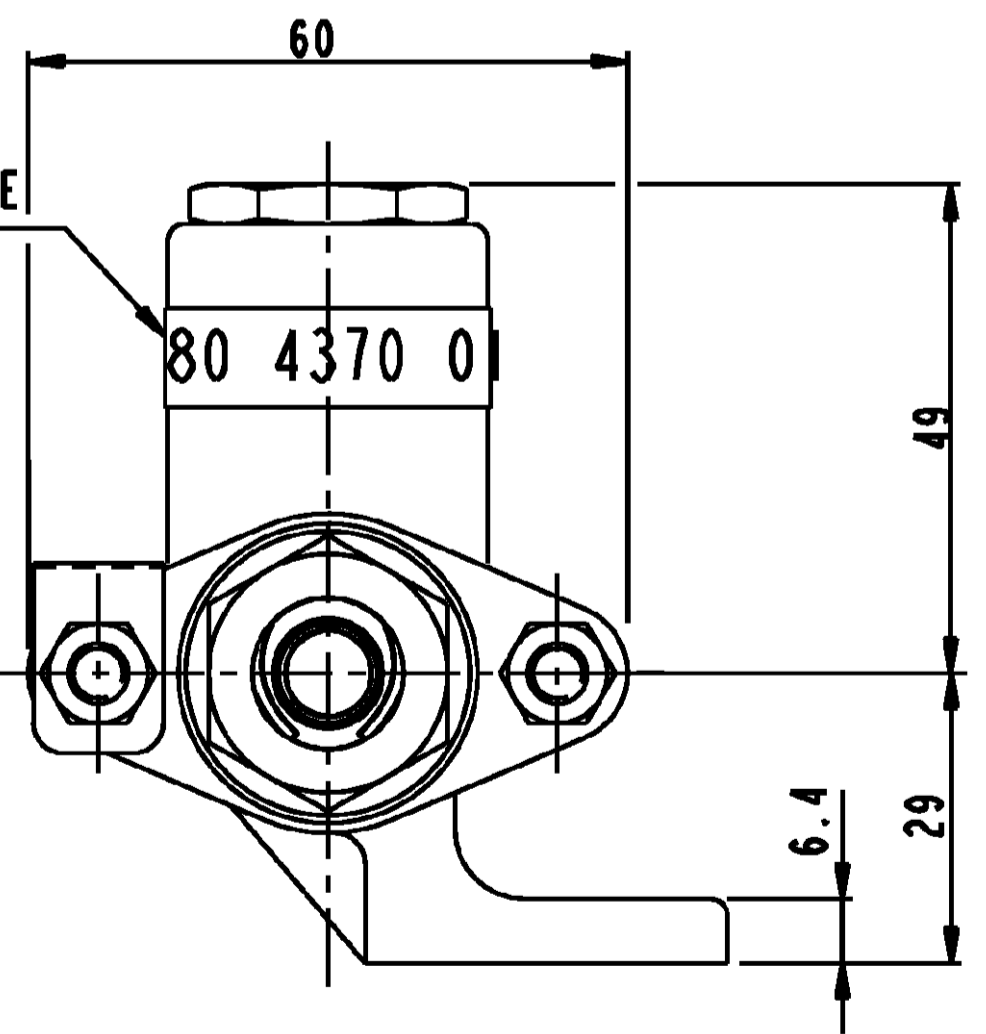


① MSP 3/103 REPAIR KIT CONSISTS OF ITEMS SHOWN

ITEM No.	TML PART No.	SCL PART No.	DESCRIPTION	QTY
1		M932700	SEALING RING NG-12	3
2		M932720	SPRING ELEMENT NG-12	3
3		M932730	RETAINER CLIP NG-12	3
4		M803450	SEAL	2
5		M935980	SEALING RING NG-12	3
6		M935990	SEALING RING NG-12	3

PART No. AND BATCH No. ARE SHOWN HERE

DELIVERY CONNECTION - M22 x 1.5 TO SUIT VOSS PLUG IN SYSTEMS 230 TORQUE 10±1 Nm



SL. No.	NOTES	
1.	PRODUCT FUNCTION AND RELIABILITY	
① 1.1	PRODUCT SPECIFICATION No. (ISSUE. No.: 2, DATE: 25.01.07)	PSSC 233C
① 1.2	WORKING MEDIUM	AIR
① 1.3	NORMAL WORKING PRESSURE	10 bar
① 1.4	MAXIMUM WORKING PRESSURE (TEMPORARILY)	13 bar
① 1.5	SWITCHING PRESSURE	< 0.3 bar
① 1.6	NOMINAL FLOW DIAMETER (WITH VOSS CONNECTION)	8.5 mm
① 1.7	THERMAL RANGE OF OPERATION	-40°C TO +80°C
① 1.8	CORROSION RESISTANCE	240 HOURS OF NSS
① 2.	WEIGHT	420 g
3.	QUALITY COMPLIANCE TESTS WILL BE CARRIED OUT REGULARLY AS PER CLAUSE NO. 11 OF PSSC 233C	
① 4.	SERVICE LIFE TO FIRST OVERHAUL IF FITTED AS PER RECOMMENDED LAYOUT 5 YEARS / 500 000 KM WHICHEVER IS EARLIER FOR TRUCK AND INTERCITY BUS APPLICATION 3 YEARS / 300 000 KM WHICHEVER IS EARLIER FOR CITY BUS APPLICATION	
5.	OPEN PORT IS FITTED WITH CLOSURE PLUG FOR STORAGE AND TRANSIT PURPOSES.	

TML PART NO.: 2880 4370 01 26

- CRITICAL
- ⊙ MAJOR
- ▲ KEY INSTRUCTION
- NO SYMBOL - MINOR

XVI	STEEL	NO TREATMENT
XVI	CAST IRON	PLATED
XV	STEEL	ZINC-IRON PLATED
XIV	CAST IRON	NO TREATMENT
XIII	ZINC ALLOY	ANODISED
XII	PLASTIC	NO TREATMENT
XI	RUBBER	NO TREATMENT
X	STAINLESS STEEL	NO TREATMENT
IX	BRASS	NO TREATMENT
VII	ZINC ALLOY	CHROMATED
VII	ALUMINIUM ALLOY	ANODISED
VI	ALUMINIUM ALLOY	CHROMATED
V	CAST IRON	PAINTED
IV	STEEL	POWDER COATED
III	STEEL	PAINTED
II	STEEL	PHOSPHATED
I	STEEL	ZINC PLATED
PART CODE	MATERIAL	SURFACE PROTECTION

SAMPLE TO BE APPROVED

21/04/07	06PP081	NR	-	NEW RELEASE	LNB/KMN	MVS
Date	Mod. No.	Sl. No.	Zone	Modification	Chkd	Appd



SUNDARAM CLAYTON LIMITED

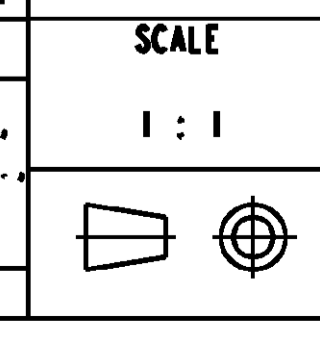
SIGN	DATE	MATERIAL
DRN MAB	08.09.06	ALTERNATE MATERIAL
CHD CPS	08.09.06	SURFACE PROTECTION REFER TABLE
APD SS	08.07.06	RAW PART No.

CONFIDENTIAL DRAWING  
THIS DRAWING IS THE SOLE PROPERTY OF SUNDARAM CLAYTON LIMITED. IT SHOULD NOT BE COPIED OR COMMUNICATED TO ANY PERSON WITHOUT THE WRITTEN APPROVAL OF SUNDARAM CLAYTON LIMITED.

UNLESS OTHERWISE SPECIFIED ALL DIMENSIONS IN mm REMOVE BURRS AND SHARP EDGES FROM FINISHED PARTS ALL DIMENSIONS ARE AFTER SURFACE PROTECTION / TREATMENT

© 2006

GENERAL TOLERANCES			
RANGE OF NOMINAL DIMENSIONS (± mm)			
≤ 50	> 50	> 180	> 400
1	2	3	4
FORCE, POWER, PRESSURE etc. (± %)			
10			



SCALE 1 : 1

DOUBLE CHECK VALVE

PART No. M 800870