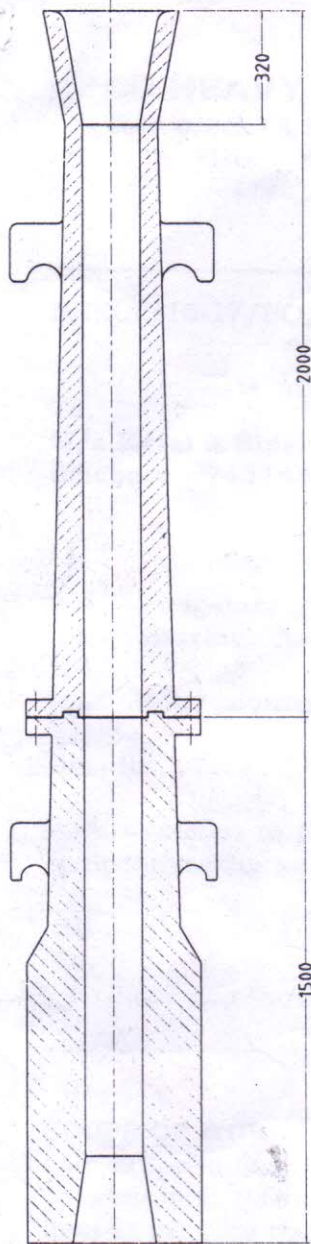
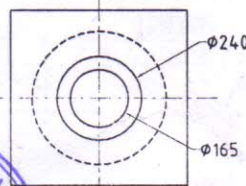
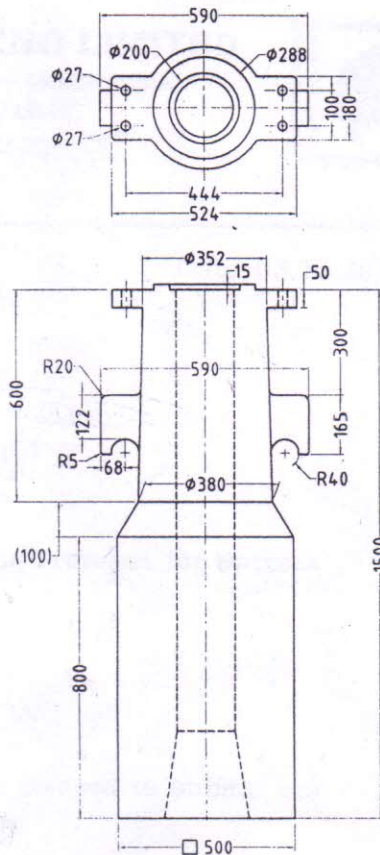
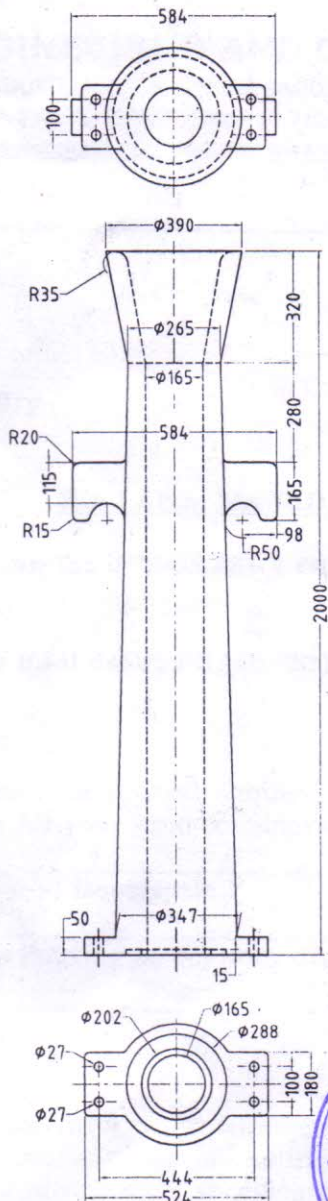


ALL DIMENSIONS ARE IN mm



ASSEMBLY



MATERIAL :- GREY CAST IRON
IS 210:2009 Gr. FG-260

S.K. Pramanik
27/9/16
HOS/SMR

DO/GO-SMR
27.09.16
DO/GO-SMR

Drg. Prepared vide ref. memc no. 84.06/SMR/MAT, Date : 10/09/2016

ITEM NO.	DESCRIPTION	NO. OFF	MATERIAL	HARDNESS	REMARKS	
AMENDMENTS						
	INDEX				DATE NAME	
 CLEANING ROUGHING SMOOTHING FINISHING	TRUMPET FOR BOTTOM POURING MOULD OF 20/22 TON EAF AT SMR SECTION (BASED ON SKETCH) METAL & STEEL FACTORY, ISHAPORE	SCALE	DRAWN	12/09/2016	S.K. Pramanik	
			TRACED			
			CHECKED			
		1:20	APPROVED	<i>S.K. Pramanik</i>	HOS/DO	DGM/QA
		DRG. NO. SMR-401				