

138900-500100

FINISHING CONTINUING COMPARED TO 385-0004
DIMENSIONS ARE IN INCHES UNLESS OTHERWISE SPECIFIED

SYMBOL ATTACHED TO CERTAIN DIMENSIONS MEANS THAT SAID DIMENSIONS COMPULSORILY HAVE THE INDICATED DATUM AND THAT THE PV, PH OR PT MAY NOT BE DATUM.
SYMBOL REFERS TO AN INDICATION FOR SOME DIMENSIONS OR SOME PARTS OF THE COMPONENTS ELSEWHERE ON THE DRAWING.

SYMBOL INDICATES THE DIMENSIONS OF LOCATING SURFACE WHICH ARE SITUATED ON THE SAME LEVEL BUT WHICH ARE MACHINED WITH MORE THAN ONE OPERATION.
THE PLANE PH PASSES THROUGH THE CENTRE OF J2 AND AT THE DISTANCE L7 SUPPORTED RASIC WITHIN ZONES C7 & D7 BEYOND THE ZONES C7 & D7 THE TOLERANCE OF THE DIMENSION L7 MAY REACH ±0.03

PH = PLANE HORIZONTAL
PV = PLANE VERTICAL
PT = PLANE TRANSVERSE
MATERIAL 15-734-1975 GRADE 24345
HT/HARDNESS QUENCHED AND TEMPERED MRLTD HB (60/500) T30 HV.
MARKING ON SAMPLE
* MANUFACTURER'S CODE
@ D.S. CAT. NO.
1 Yr. of Warr.

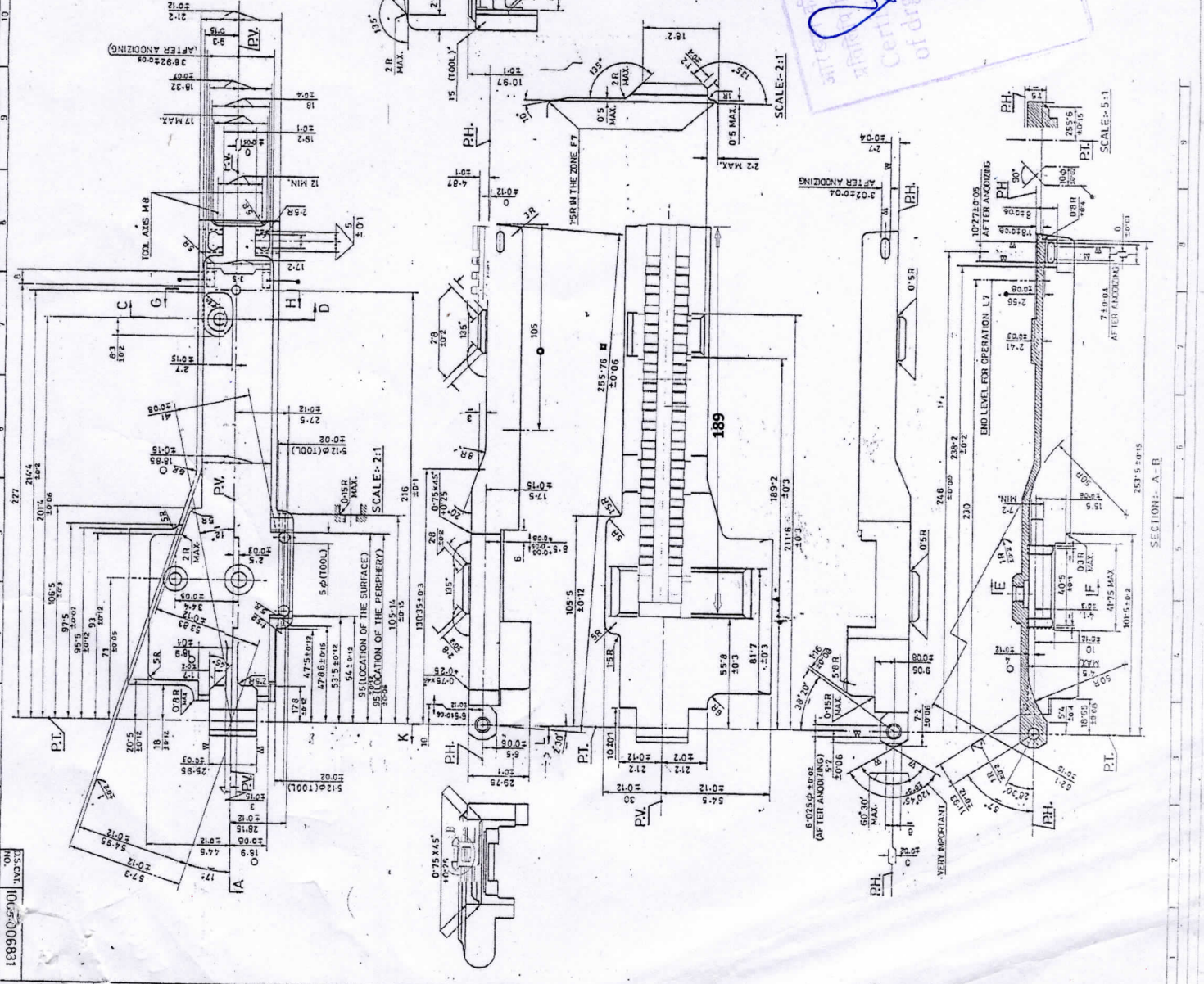
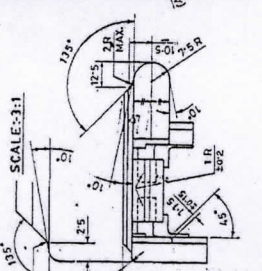
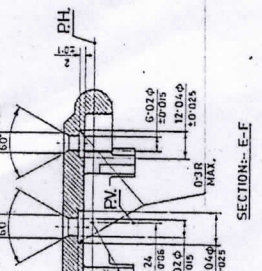
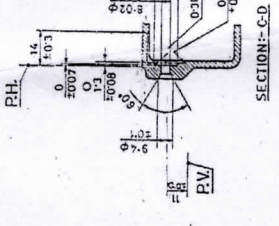
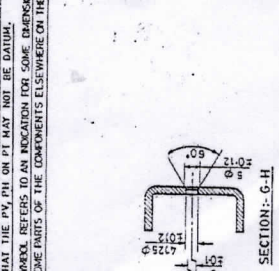
SURFACE FINISH- AS PER IS: 2011 FOR HOLES, IN WHERE NOT SPECIFIED SHOULD BE V.

IRIS, No. ARDE/SK/108/005		
NO.	DATE	DESCRIPTION
1	08.18.76	REVISED
2		REVISED
3		REVISED
4		REVISED
5		REVISED
6		REVISED
7		REVISED
8		REVISED
9		REVISED
10		REVISED
11		REVISED
12		REVISED
13		REVISED
14		REVISED
15		REVISED
16		REVISED
17		REVISED
18		REVISED
19		REVISED
20		REVISED
21		REVISED
22		REVISED
23		REVISED
24		REVISED
25		REVISED
26		REVISED
27		REVISED
28		REVISED
29		REVISED
30		REVISED
31		REVISED
32		REVISED
33		REVISED
34		REVISED
35		REVISED
36		REVISED
37		REVISED
38		REVISED
39		REVISED
40		REVISED
41		REVISED
42		REVISED
43		REVISED
44		REVISED
45		REVISED
46		REVISED
47		REVISED
48		REVISED
49		REVISED
50		REVISED
51		REVISED
52		REVISED
53		REVISED
54		REVISED
55		REVISED
56		REVISED
57		REVISED
58		REVISED
59		REVISED
60		REVISED
61		REVISED
62		REVISED
63		REVISED
64		REVISED
65		REVISED
66		REVISED
67		REVISED
68		REVISED
69		REVISED
70		REVISED
71		REVISED
72		REVISED
73		REVISED
74		REVISED
75		REVISED
76		REVISED
77		REVISED
78		REVISED
79		REVISED
80		REVISED
81		REVISED
82		REVISED
83		REVISED
84		REVISED
85		REVISED
86		REVISED
87		REVISED
88		REVISED
89		REVISED
90		REVISED
91		REVISED
92		REVISED
93		REVISED
94		REVISED
95		REVISED
96		REVISED
97		REVISED
98		REVISED
99		REVISED
100		REVISED
101		REVISED
102		REVISED
103		REVISED
104		REVISED
105		REVISED
106		REVISED
107		REVISED
108		REVISED
109		REVISED
110		REVISED
111		REVISED
112		REVISED
113		REVISED
114		REVISED
115		REVISED
116		REVISED
117		REVISED
118		REVISED
119		REVISED
120		REVISED
121		REVISED
122		REVISED
123		REVISED
124		REVISED
125		REVISED
126		REVISED
127		REVISED
128		REVISED
129		REVISED
130		REVISED
131		REVISED
132		REVISED
133		REVISED
134		REVISED
135		REVISED
136		REVISED
137		REVISED
138		REVISED
139		REVISED
140		REVISED
141		REVISED
142		REVISED
143		REVISED
144		REVISED
145		REVISED
146		REVISED
147		REVISED
148		REVISED
149		REVISED
150		REVISED
151		REVISED
152		REVISED
153		REVISED
154		REVISED
155		REVISED
156		REVISED
157		REVISED
158		REVISED
159		REVISED
160		REVISED
161		REVISED
162		REVISED
163		REVISED
164		REVISED
165		REVISED
166		REVISED
167		REVISED
168		REVISED
169		REVISED
170		REVISED
171		REVISED
172		REVISED
173		REVISED
174		REVISED
175		REVISED
176		REVISED
177		REVISED
178		REVISED
179		REVISED
180		REVISED
181		REVISED
182		REVISED
183		REVISED
184		REVISED
185		REVISED
186		REVISED
187		REVISED
188		REVISED
189		REVISED
190		REVISED
191		REVISED
192		REVISED
193		REVISED
194		REVISED
195		REVISED
196		REVISED
197		REVISED
198		REVISED
199		REVISED
200		REVISED

(SK-6034)

BODY COVER

as correct copy
of drawing as manufactured
by J. I. Works Manufacture
STANDARD CELL



19-2710/00