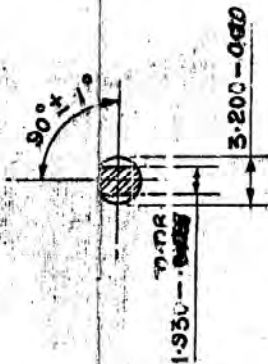
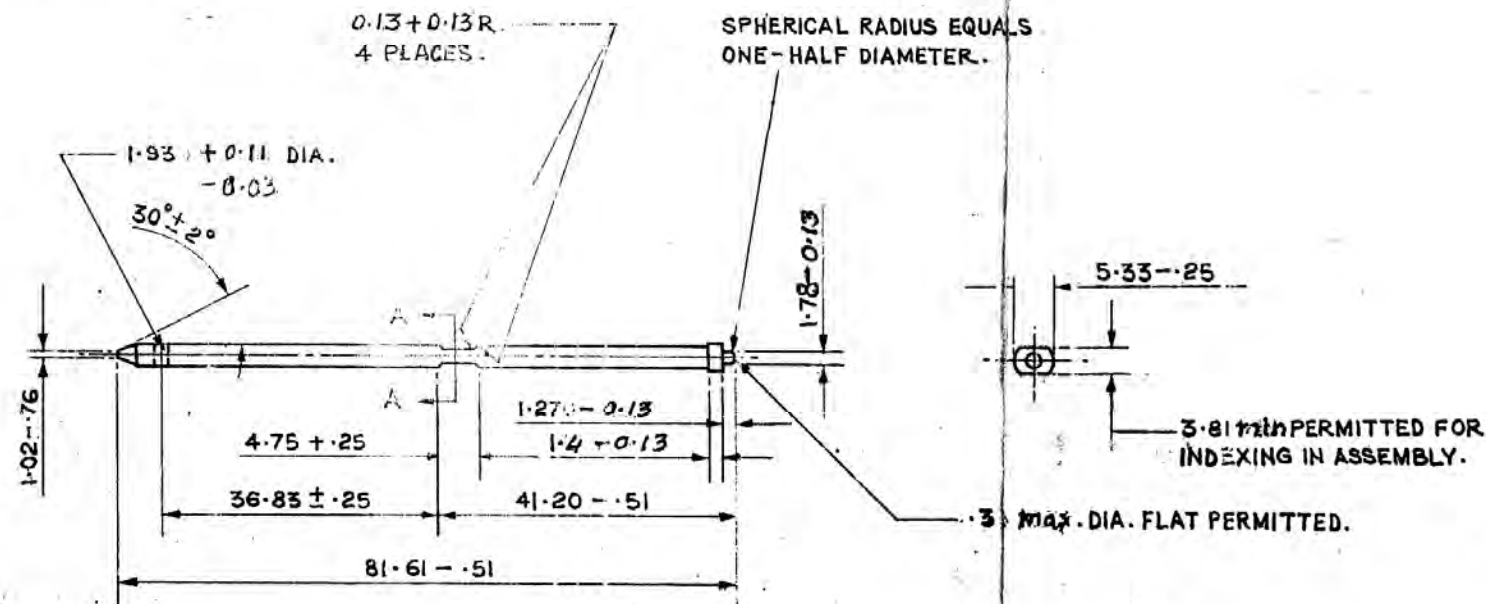


PART NO
IQX 324

DRG CONVENTIONS AS PER 'IS SPECIFICATIONS'
DIMENSIONS ARE IN MM.

D.C.I. 26194-A.

GEN TOL MEDIUM CLASS TO IS: 2102:1969.



SECTION AA
SCALE: -4/1

NOTES:-

- 1) THE EDGES OF THE FLAT TO BE ROUNDED BY 0.25 TO 0.38.
- 2) THE STRIKER SHOULD BE CHECKED FOR STRAIGHTNESS TO SATISFY A GAUGE OF 3.215 ± 0.013 DIA. AND LENGTH 82.55.
- 3) TECHNICAL REQUIREMENTS SPEC CQA (A) 1803 (e).

FINISH ALL OVER 1.6 μm.

PROTECTIVE FINISH:- CADMIUM PLATING TO IS 1572:1986
SERVICE GR 2 FOLLOWED BY CHROMATE PASSIVATION TO IS 1340:1977 OR ELECTROPLATED TO IS: 1359:1977
CLASSIFICATION: NO 5M 205.

MATERIAL:-

~~COLD DRAWN STEEL ROUND TO SPECN BS:070 05 115 OR~~
~~COLD DRAWN STEEL ROUND TO SPECN BS:070~~
~~070 M20 OR SPECN BS:070 070 PT. 1 023 01 01 07~~
~~0205~~
COLD DRAWN STEEL ROD TO IS 4431:1978 DESIGNATION
11C 10 525

PROTECTIVE FINISH:- AS ABOVE	MATERIAL:- AS ABOVE.	ASSLY DRG. IQX. 18 A
		INSP. INSTRS.
GAUGE SCH: I 1100	ESTIMATED MASS:- 4.79g.	DRAWN CHECKED TRACED TRN. CHD.
	SCALE:- NTS	N.M.G. 205

CHIEF D'MAN
GROUP OFFICER
D.O.CI(A)
APPROVED
SD/-
FOR CI(A)

DATE:- 8-9-61
DESIGNER'S REF.
I.A.1901.
19 SHEETS
SHEET 18
(BASED ON DRG. C/7548310)

PART NO.
IQX 324

CQA) KIRKEE.

DATE	AUTHORITY	ZONE	NATURE	SIG.	SIG.
			AMENDMENTS	ASHP	D.O.
2-9-73	DC 35573-A		TECH DETAILS IN BOX FILLED. GEN TOL. PROTECTIVE FINISH ADDED. DATE AND AMENDMENT SYMBOLS ADDED.		
11-6-88	DC 3 138 1-		MATERIAL SPECN. AMENDED		
11-7-74	DC 3 193-A		DRG. CONVERTED TO SI UNITS		
15-7-74			RETRACEE WITHOUT CHANGE.		
			PREVIOUS D.C.S (I) NO 26194-A, 27037-A, 29664-A, 29931-A & 30037-A.		

STRIKER

