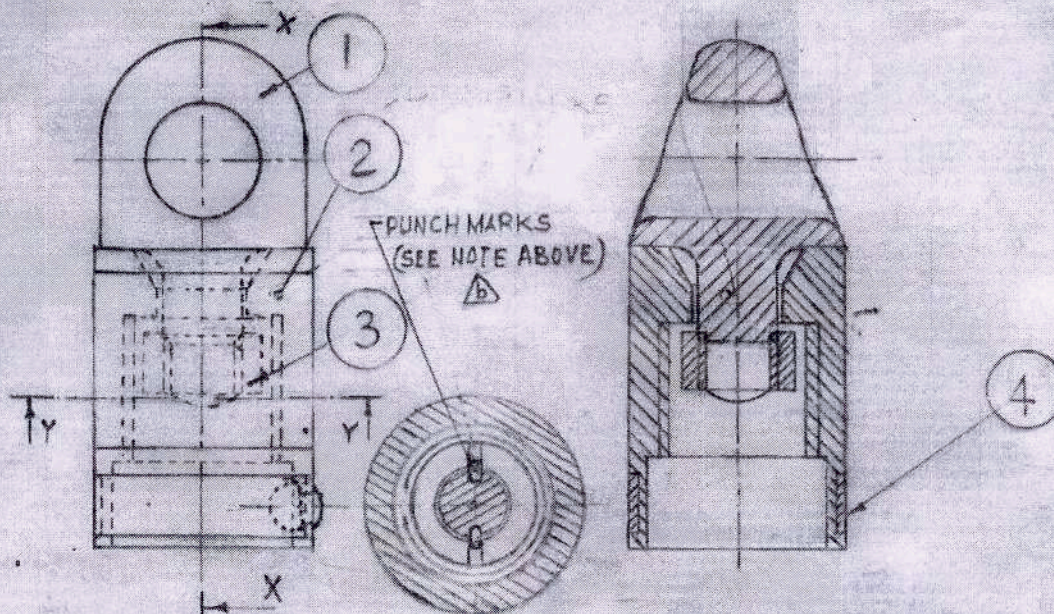


**NOTE:** DETAIL-1 O RING IS TO BE PERMANENTLY LOCKED WITH TWO PUNCH MARKS ON THREADED BUSH PART DETAIL-3, AT THE TIME OF ASSEMBLY.

SHEET 1 OF 8



**NOTE:** PART No.1 AND PART No.2 SHOULD HAVE LOOSE RUNNING FIT

4	5	RING WITH STOPPER	1
3	4	THREADED BUSH	1
2	3	BODY	1
1	2	O-RING	1
—	1	FEMALE PORTION OF DWL (GENERAL ASSY)	1

DETAIL No.	SHEET No.	NOMENCLATURE	No. OFF	SPECN/DRG. No.
------------	-----------	--------------	---------	----------------

### DETAIL INDEX

e	20-09-21	—	QMS/PG/PAS/245/AEP/57B	AMENDED AS PER CHANGE SHEET No. 320
d	18-12-18	—	QMS/PG/PAS/II/AEP/57 B	AMENDED AS PER CHANGE SHEET No. 159
b	22-5-01	D-4	PAS/AEP/MC/ORD	NOTE ADDED

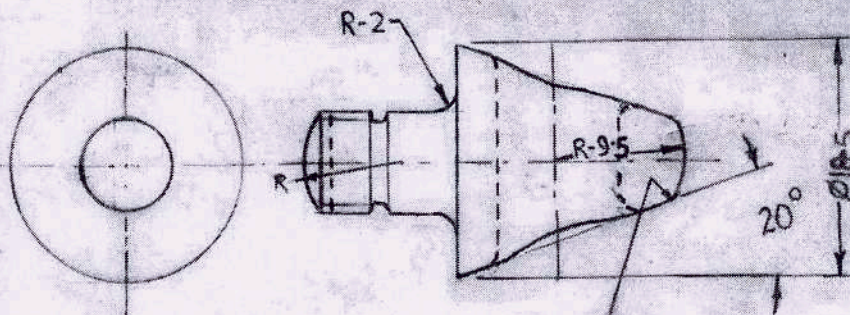
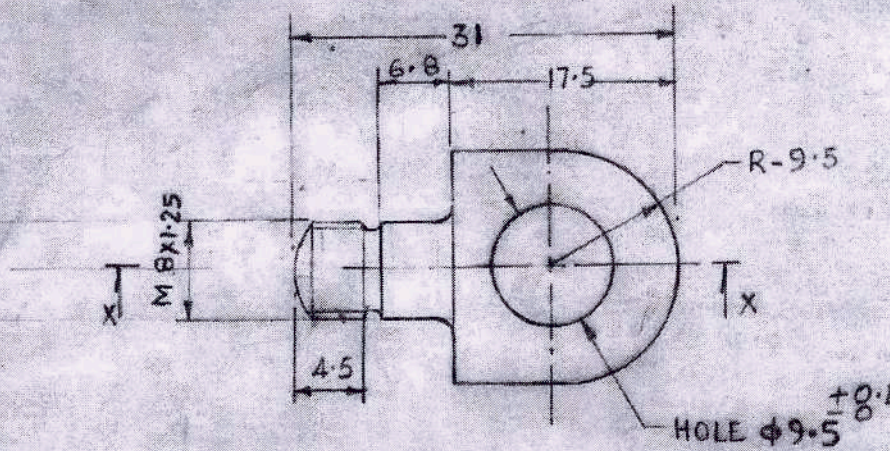
R.No.	DATE	ZONE	AUTHORITY	BRIEF RECORD	Rev	Spec
-------	------	------	-----------	--------------	-----	------

DRN	DRD	MATERIAL:-	ADRDE, AGRA
CHD	PGD	FINISH:- ASSY SHOULD BE FINISHED SMOOTH	
TRD	PGD	HEAT TREATMENT	
COMP	PGD		
SCALE:- NTS	PROJ. OFFR	DIV. HEAD	APPROVED
DIMENSIONS IN mm	GENERAL ASSEMBLY CANOPY		PROG. DIRECTOR (G.A.)
TOLERANCE:-	FEMALE PORTION OF DROGUE		DRG. No. (a)(b)(c)(d)(e)
	WITHDRAWAL LINE (CWL) FOR KIRAN A/C / JAGUAR A/C		ADRDE/1343-G

DRD/53/98

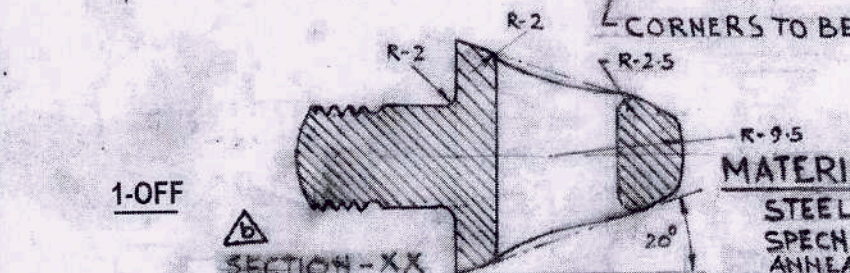


1



**MATERIAL:-**

AUSTENITIC STAINLESS STEEL  
AS PER IS : 6603 - 2001 GRADE  
07Cr18 Ni9




1-OFF



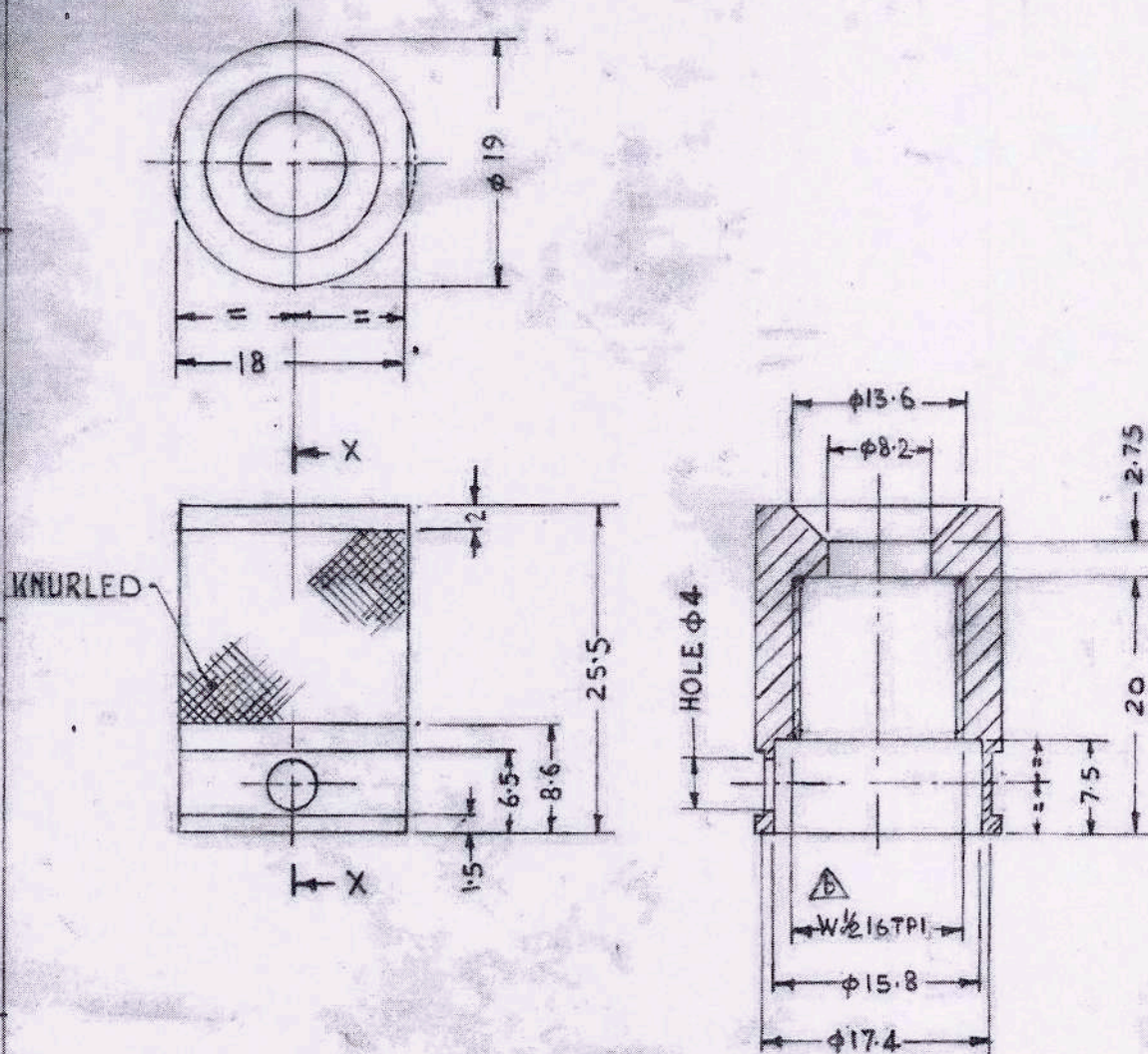
SECTION - XX

**MATERIAL:-** AUSTENITIC STAINLESS  
STEEL CASTING TO GRADE 6 AS PER  
SPEC: IS: 3444-1966 IN CAST &  
ANNEALED CONDITION.

e	20-09-21	—	QMS/PG/PAS/245/AEP/57B	AMENDED AS PER CHANGE SHEET No. 320		
d	18-12-18	—	QMS/PG/PAS/AEP 57B	AMENDED AS PER CHANGE SHEET No. 159		
c	03-10-18	A-1,A-2	QMS/PG/AEP/578	AMENDED AS PER CHANGE SHEET No.157(a)		
b	22-5-01	A-4	PAS/AEP/MC/ORD	SECTION - XX & SIDE VIEW, ADDED		
R.No	DATE	ZONE	AUTHORITY	BRIEF RECORD		
DRN	DRD		MATERIAL:- AS ABOVE		AD RDE, AGRA.	
CHD	FINISH:- TO BE SMOOTHLY		FINISHED AND POLISHED BRIGHT			
TRD	HEAT TREATMENT:-		APPROVED			
COMP	SCALE:- NTS		PROJ. OFF. DIV. HEAD		ORG.No. (a)(b)(c)(d)(e)	
DIMENSIONS		O-RING		PROG.DIRECTOR(O-A)		
IN mm		FEMALE PORTION OF CANOPY WITHDRAWAL LINE		ADRDE/1343-01		
TOLERANCE		(CWL) FOR KIRAN A/C / JAGUAR A/C				
IS: 2102 (Pt-1)						
MEDIUM						



(2)



SECTION-XX

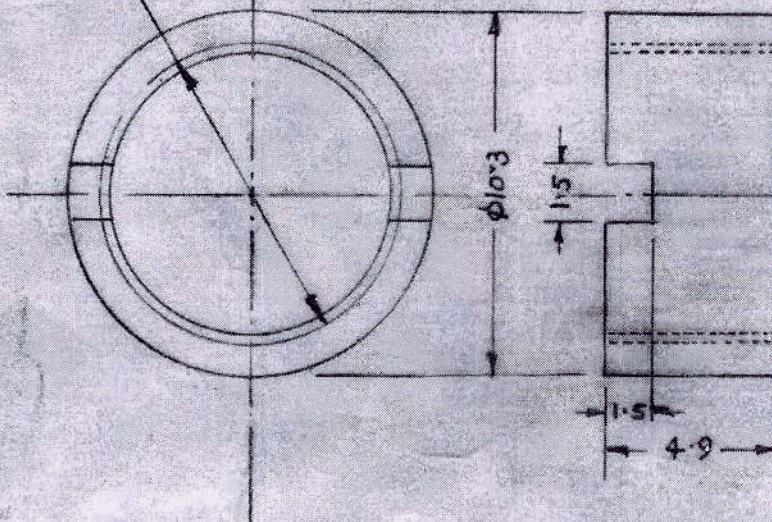
1-OFF

e	20-09-21	—	QMS/PG/PAS/245/AEP/57B	AMENDED AS PER CHANGE SHEET No. 320		
d	18-12-18	—	QMS/PG/PAS/AEP 57 B	AMENDED AS PER CHANGE SHEET No.159		
b	22-5-07	B-2	PAS/AEP/MC/ORD	W 1/2 - 16 TPI (CHANGED DIMENSIONS)	Q/c	Q/c
R.No	DATE	ZONE	AUTHORITY	BRIEF RECORD	O/C	HEAD
DRN	48		DRD	MATERIAL:-AL-ALLOY	ADRDE, AGRA	
CHD	SA			IS:733-1967 HE-14 IN 'W' CONDITION.		
TRD				FINISH:- TO BE SMOOTHLY FINISHED	APPROVED	
COMP				& ANODIZED BLACK TO GRADE 15		
SCALE:-NTS	PROJ OFFR			HARDNESS:-155/175BHN	PROG DIRECTOR (QA)	
	DIV. HEAD					
DIMNS IN mm				BODY	DRG No (a)(b)(c)(d)(e)	
TOLERANCE:-				FEMALE PORTION OF CANOPY WITHDRAWAL LINE (CWL)		
IS:2102(Pt-1)				FOR KIRAN A/C / JAGUAR A/C	ADRDE/1343-02	
MEDIUM						

DRD/53/98



M8X1.25




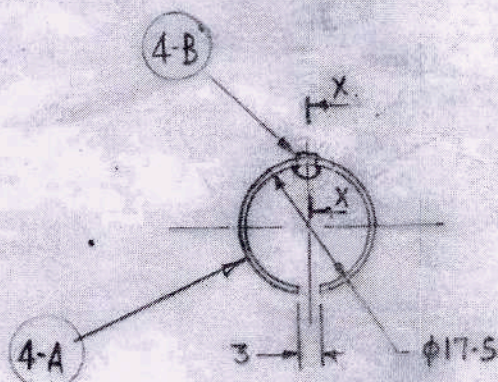
1-OFF

**MATERIAL:- AUSTENITIC STAINLESS**  
**STEEL BAR TO GRADE 07 Cr18Ni9**  
**AS PER IS: 6603 IN 1/2 HARD**  
**CONDITION.**

e	20-09-21	—	QMS/PG/PAS/245/AEP/57B	AMENDED AS PER CHANGE SHEET No. 320		
d	18-12-18	—	QMS/PG/PAS/AEP/57 B	AMENDED AS PER CHANGE SHEET No. 159		
R.No.	DATE	ZONE	AUTHORITY	BRIEF RECORD	o/c PGD	

DRN	S.C.SHARMA	DRD	MATERIAL	As Above	ADDRDE, AGRA
END	SK	Tel	FINISH:- TO BE SMOOTHLY		
FRQ		o/c	FINISHED & POLISHED BRIGHT		
COMP		PGD	HEAT TREATMENT		
SCALE:- 5:1	PROJ. OFFR				APPROVED
	DIV. HEAD				
DIMENSIONS	THREADED BUSH				
IN mm	FEMALE PORTION OF CANOPY WITHDRAWAL LINE (CWL)				
TOLERANCE	FOR KIRAN A/C / JAGUAR A/C				
IS: 2102 (PT-1)					
MEDIUM					
					PROG. DIRECTOR (G.A.)
					DRG. No. (a)(b)(c)(d)(e)
					ADDRDE/1343-03
					DRD/53/93








DIE-PRESS TO FORM HEAD AS SHOWN HERE

SECTION-XX

1- OFF

4-B	7	STOPPER	1
4-A	6	RING	1
4	5	RING WITH STOPPER	+
DET.No	SHT.No	NOMENCLATURE	No. OFF

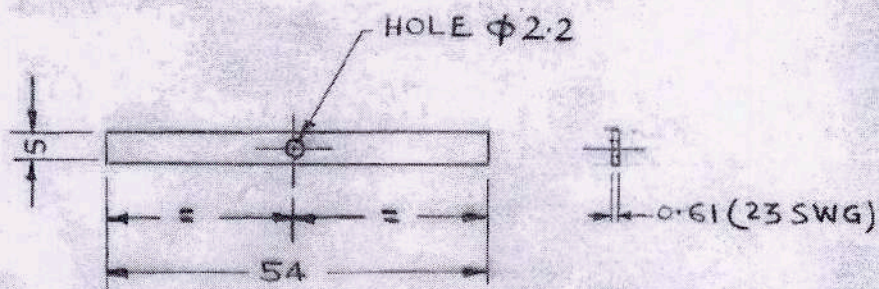
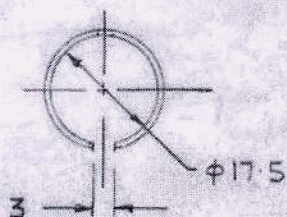
DETAIL INDEX

e	20-09-21	—	QMS/PG/PAS/245/AEP/57B	AMENDED AS PER CHANGE SHEET No. 320		
d	18-12-18	—	QMS/PG/PAS/AEP/57B	AMENDED AS PER CHANGE SHEET No. 159		
b	22-5-01	D-1	PAS/AEP/MC/ORD	WE PRESS TO FORM HEAD AS SHOWN HERE	Ent	DEL
R No	DATE	ZONE	AUTHORITY	BRIEF RECORD	0 1/2 D&S	HEAD QA
DRN	49		DRD	MATERIAL:- SPRING STEEL	ADR DE, AGRA	
CHD	SK		PGD	FINISH:-		
TRD				HARDNESS:-	APPROVED	
COMP						
SCALE:- NTS	PROJ. OFFR		DIV. HEAD			
DIMNS IN MM	RING WITH STOPPER		FEMALE PORTION OF CANOPY WITHDRAWAL LINE (CWL)			
TOLERANCE:	FOR KIRAN A/C / JAGUAR A/C				PROG. DIRECTOR (A) DRGN No. 1343-04 ADR DE	
15:2102(Pt-1)						
MEDIUM						

DAD/53/28





4-4



DEVELOPMENT

1-OFF

e	20-09-21	—	QMS/PG/PAS/245/AEP/57B	AMENDED AS PER CHANGE SHEET No. 320		
d	18-12-18	—	QMS/PG/PAS/AEP/57B	AMENDED AS PER CHANGE SHEET No. 159		
R.No	DATE	ZONE	AUTHORITY	BRIEF RECORD	O/c	PGD
DRN	PSP		DRD	MATERIAL:- CARBON SPRING STEEL EN-42 J AS PER IS 1449-1956	ADRDE, AGRA	
CHD	Silver Ream		Jdm	FINISH:- CD PLATED AS PER SPECN. No. 15/1572-1986, Fe/cd 12CA		
TRD				HARDNESS:- 201/255BHN	APPROVED	
COMP			O/c PGD			
SCALE:-	PROJ. OFFR		DIV. HEAD			
NTS						
DIMNS. IN mm				RING		
TOLERANCE:-	FEMALE PORTION OF CANOPY WITHDRAWAL LINE (CWL)				PROG. DIRECTOR (QA)	
IS: 2102 (Pt-1)	FOR KIRAN A/C / JAGUAR A/C				DRG No (a)(b)(c)(d)(e)	
MEDIUM					ADRDE/1343-044	



4

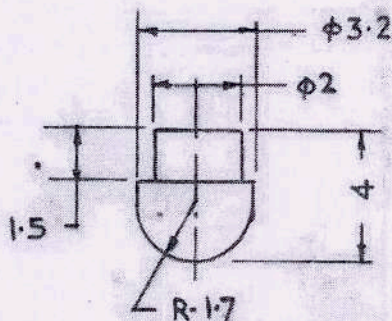
3

2

1

SHEET 7 OF 8

(4B)



1-OFF

e	20-09-21	—	QMS/PG/PAS/245/AEP/57B	AMENDED AS PER CHANGE SHEET No. 320		
d	18-12-18	—	QMS/PG/PAS/AEP 57 B	AMENDED AS PER CHANGE SHEET No. 159		
R.No	DATE	ZONE	AUTHORITY	BRIEF RECORD	O/c	PGD
DRN	Rep.		DRD	MATERIAL:- STEEL AS PER SPECN. IS: 4882-1968	ADRDE, AGRA	
CHD	Sita Ram			FINISH:- Cd PLATED AS PER SPECN No. IS: 1572-1986, Fe/cd 12c		
TRD				HEAT TREATMENT:-		
COMP		O/c	PGD		APPROVED	
SCALE:-	5:1	PROJ OFFR <i>ow</i> DIV. HEAD <i>0</i>				
DIMNS. IN mm	STOPPER					
TOLERANCE:-	FEMALE PORTION OF CANOPY WITHDRAWAL LINE (CWL)			PROG DIRECTOR (SA)		
IS: 2102 (P-1)	FOR KIRAN A/C / JAGUAR A/C			DRG. NO. <i>(a) (b) (c) (d) (e)</i> ADRDE/1343-U4A-02		
MEDIUM				DRD/53/98		



**PACKING CLAUSE:-**

EACH FEMALE PORTION OF CANOPY SHALL BE PACKED IN A POLYTHENE BAG OF SUITABLE SIZE AND TIED. THE MOUTH OF THE BAG TO BE HEAT - SEALED 20 NOS. THUS SEALED BAG SHALL BE PACKED IN A SUITABLE SIZE OF CARTON 10 NOS. OF SUCH CARTONS SHALL BE PACKED IN A C.W.P (DULY LINED WITH PAPER PACKING WATER PROOF) ONE FEMALE PORTION OF CANOPY IN EACH CARTON SHALL BE IDENTIFIED BY A LABEL SHOWING CAT. NO, DESIGNATION OF THE STORE AND ALSO THE RECOGNISED INITIALS OF THE - MANUFACTURER. THE PACKING CASE SHALL BE LEGIBLY AND INDELIBLY MARKED WITH THE ADDRESS OF THE CONSIGNEE, CONSIGNOR, CAT. NO, NOMENCLATURE OF THE STORE, THE YEAR OF MANUFACTURE, TOTAL NO OF PACKING CASES AND THE NO. OF INDIVIDUAL PACKING CASE IN A CONSIGNMENT

e	20-09-21	—	QMS/PG/PAS/245/AEP/57B	AMENDED AS PER CHANGE SHEET No. 320		
d	18-12-18	—	QMS/PG/PAS/AEP 57 B	AMENDED AS PER CHANGE SHEET No. 159		
b	15-12-99	F 4	ADRDE/PAS/AEP/57/B, DT. 15-12-99	PACKING CLAUSE INCLUDED AS SHEET No 8		
R NO	DATE	ZONE	AUTHORITY	BRIEF RECORD	OVC D&S	HEAD (Q.A)
SCALE	ADRDE, AGRA			DRN	PROJ. OFFR	
DIMENSION IN mm	GROUP			CHD	GROUP DIR	
TOL.					OKC D&S	
MATERIAL PROCESS					APPROVED	
FINISH					HEAD (Q.A)	
HEAT TREATMENT					DRG. NO. (e)(d)(e)	
					ADRDE/1343-05 (d)(b)	
					PROV NO	

FEMALE PORTION OF CANOPY  
WITHDRAWAL LINE (CWL)  
FOR KIRAN A/C / JAGUAR A/C