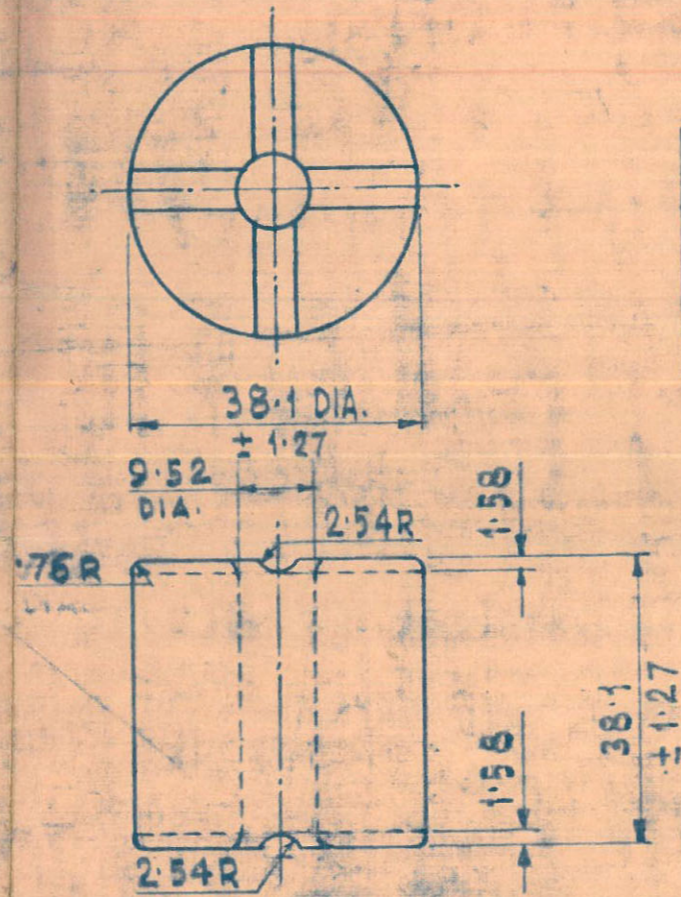
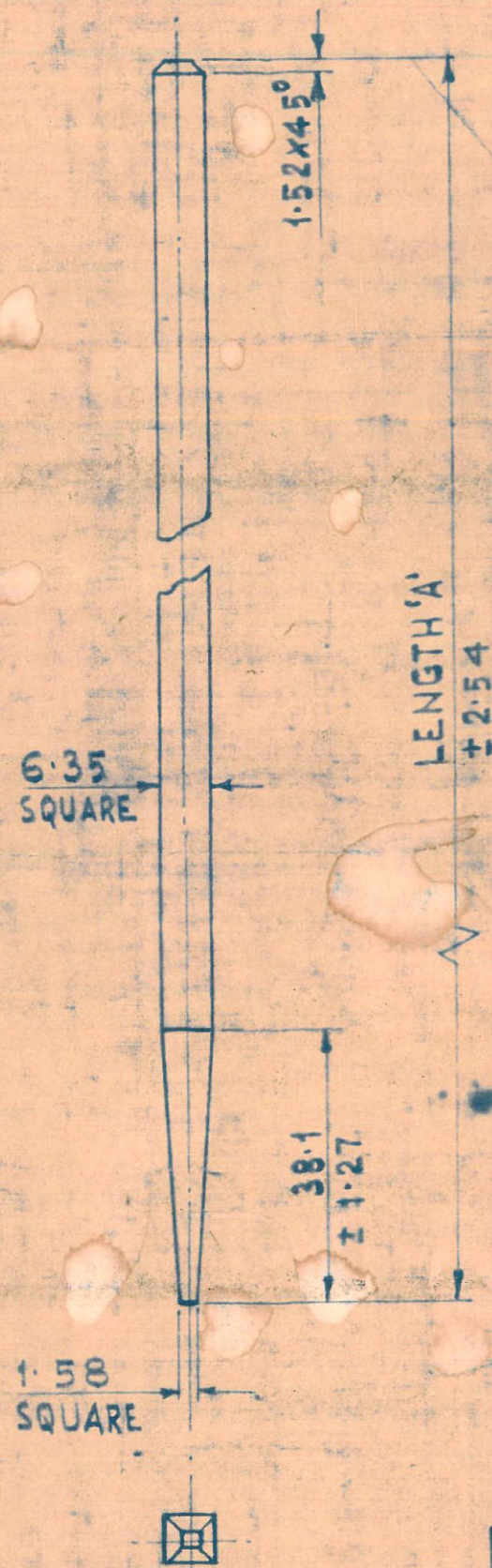


FOR EXPLANATION OF DIMENSIONING ETC., SEE
D.D. NOTE SHEET NO. 3 (LATEST ISSUE)



COLLAR

PARTICULARS OF PEGS

LENGTH 'A'	NO. PER SET	MATERIAL	FINISH.
457.2	2	STEEL BS 970 P1.1:1983 Gr 070M20 ORIS: 1570 SCH. 4 TABLE II C15 Mn 75.	PAINTED WHITE.
228.6	1	" "	PAINTED WHITE

NOTE:-

FOR PAINT WHITE SEE. IND/SL/3256
FOR PAINT BLACK SEE. IND/SL/3247

ALL SHARP EDGES TO BE REMOVED.

MATERIAL:-

ALUMINIUM BS 1476 E16.

FINISH:-

GROOVES AT ENDS PAINTED BLACK &
THE REMAINDER PAINTED WHITE.

MATERIAL:-

ALUMINIUM BS 1474-1987 DESIGNATION
1200 TEMPER 'F'

KEEP THIS COPY OF THE STORE
PAGE DRG/SCHEDULE/
SHEET/SPECIFICATION.
CQA (SA) ICHAPUR

SA/25/12/20

METRIC

REV.	DATE	ZONE	BRIEF RECORD.	SIG.	DATE	NAME	ASSY. DRG. NO.	CQA(SA) ICHAPUR
Am	24576-SA	01.11.99	E/1,2	MATERIAL FOR PEGS AMENDED	DGN.			DIMENSIONS ARE IN MILLIMETRES.
SA	23852-SA	17.6.97		MATERIAL AMENDED	DRN.		MATL :- AS STATED.	
	20980-SA	31.10.90	E/1,2	MATERIAL AMENDED	CHD.			
	20879-SA	19.7.90		CLOTH NEG. RETRACED & DRAWING RESEALED	TRD.	<i>Perumtha</i>	COMP. 18.7.90. B.NATH.	APPROVED. DT:- 9.12.74 (CL. NEG. RE-TRACED.)
				PREVIOUS D.C.(1) NOS. 14140-SA, 15655-SA, & 20869-SA.			1/C.D.O.	
					SCALE:- 1:1			DESIGNER'S REF.
					SEALED: DC(1) 14140-SA			D.D.(E) 1402
					DT:- 12.12.74.			DS. CAT NO.
								1005-000755

PEGS, NIGHT LINE,
M.G.Mk. I