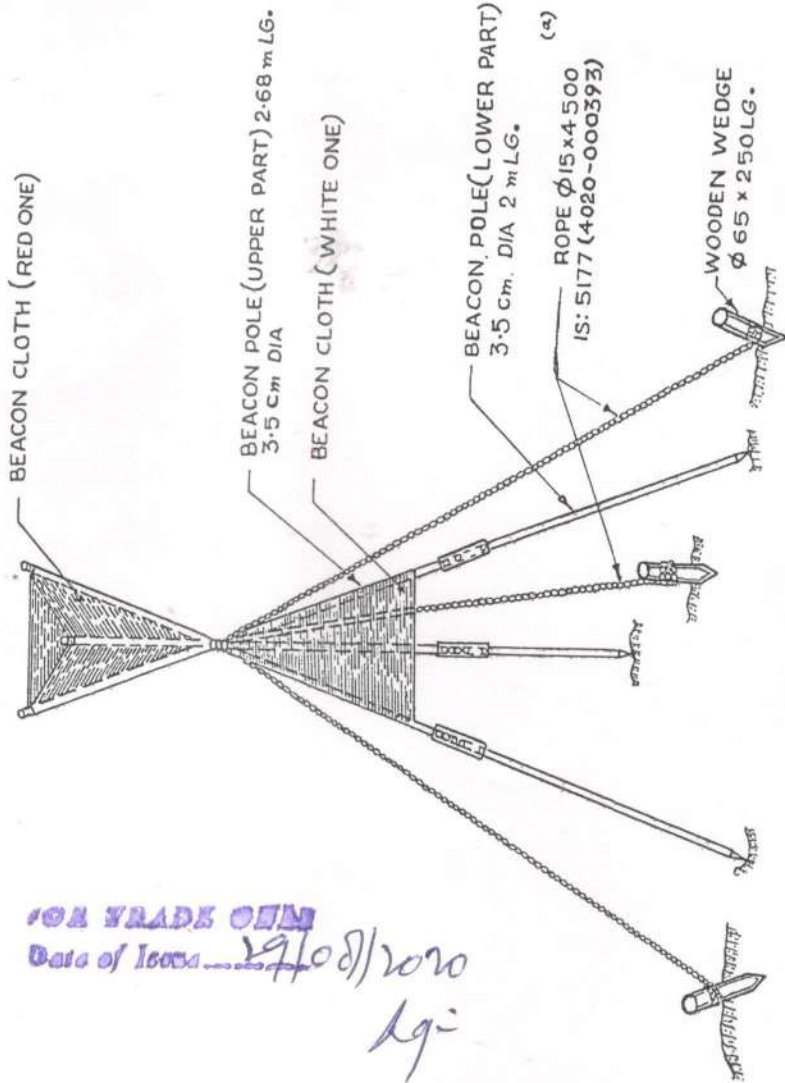


FILING CAB

SYB. ZONE	AMENDMENTS	CHD	SIG	DATE
	D.C. (1)-1022-I (P)-I DRG. PROV. SEALED			8.8.80
	D.C. (1)-A538-I NOM. AMENDED, CAT/PT. No. ADDED & DRG. SEALED.			2.4.83
	(4) D.C. (1)-5119-I, NOM. AMENDED & CAT/PT. No. ADDED FOR ROPE ϕ 15 x 4500			15.5.87

FOR EXPLANATION OF DIMENSIONING ETC, SEE CII, TECH. INSTRUCTIONS No-01	DRN	APPROVED
MATL & SPEC.	TRD	FOR
FINISH & SPEC.	CHD	J. NATH
	USED ON	CONTROLLER
	BASED ON	CII, DEHRADUN
	CAT/PT. No.	DATE: 25-7-80
	DRG No.	6675-000511
	SCALE	CII-555
	NTS	SH2 OF 2



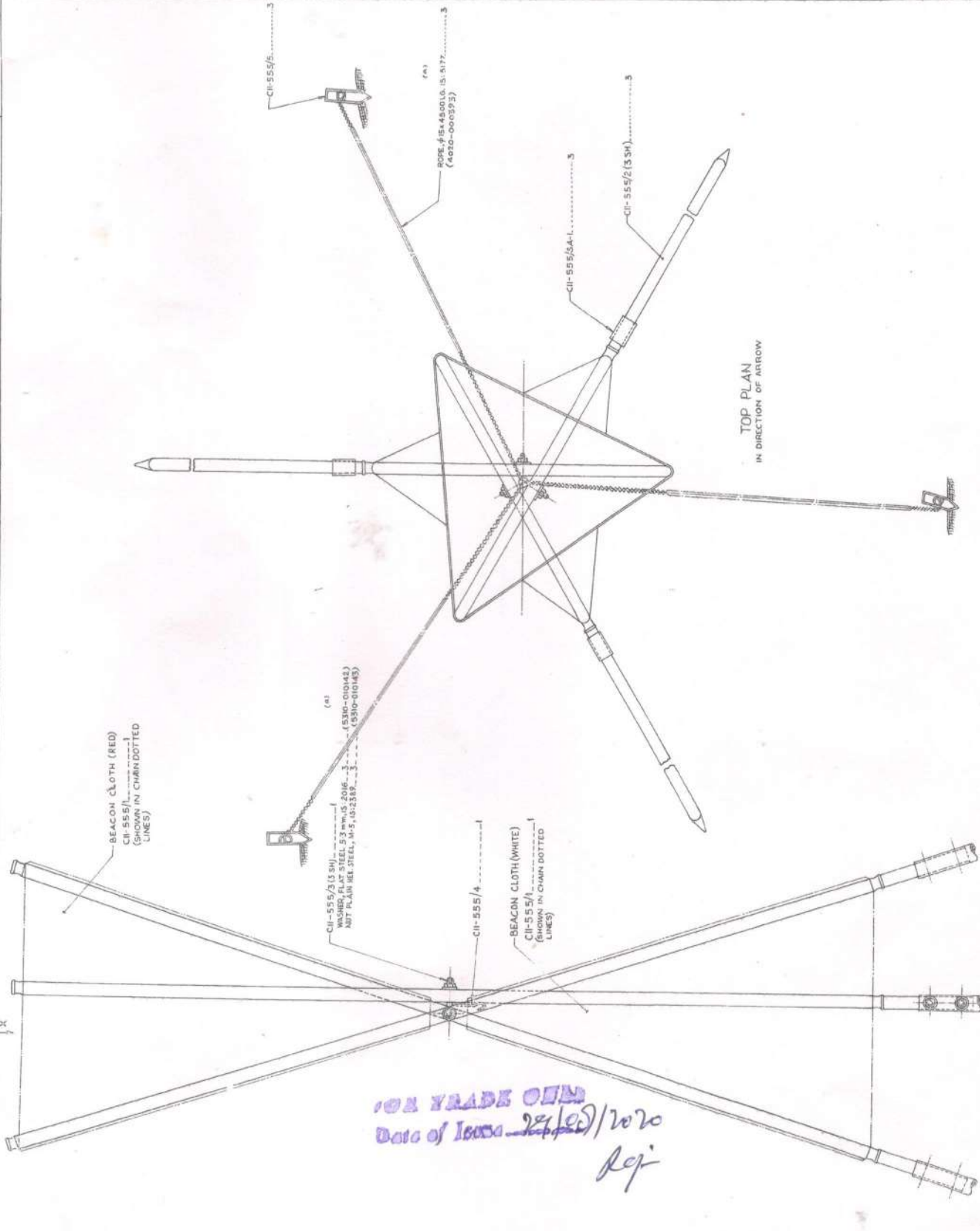
FOR TRADE USE
Date of Issue: 29/08/2020
lg

TITLE:- TARGET, SURVEYING BEACON, 2.2A

FILING CAB

AMENDMENTS	CI	DATE
DWG BROU RECALC		01/20
D.C. 10-1331-1		01/20
REVISIONS TO BE MADE BY CAT/PIN/ADGEG		01/20
DWG BROU RECALC		01/20
INVO-01-3117-1, CAT/PIN/ADGEG FOR WORKER PART & THE REBE ADDRESS		01/20
WORKER PART & THE REBE ADDRESS		01/20

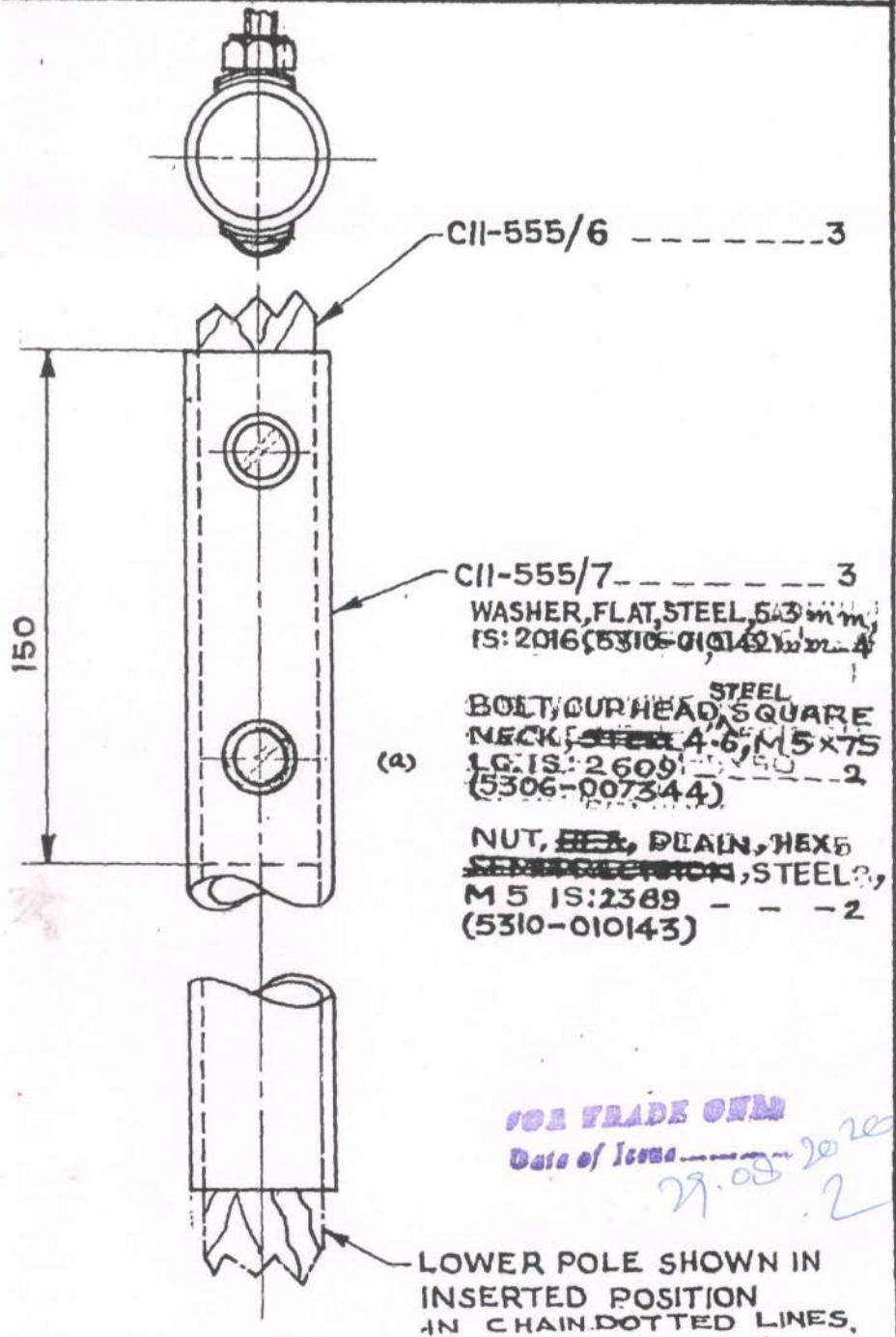
FOR EXPLANATION OF DIMENSIONS ETC. SEE	TEC	APPROVED
CI TECH INSTRUCTIONS		
THIRD ANGLE PROJECTION	CI	CI
DIMENSIONS ARE IN MM	CI	CI
DATE: 17/01/20		
MAIL & SPEC		
BASED ON		
CAV/P	5575-0000	511
DWG	CI-555	
FINISH & SPEC		
SEE DETAILS		
SCALE	1:50	1:50



TARGET, SURVEYING BEACON, 2 A.

5D

FOR EXPLANATION OF DIMENSIONING ETC; SEE TECH. INSTRUCTIONS No. 01
 THIRD ANGLE PROJECTION DIMENSIONS ARE IN mm

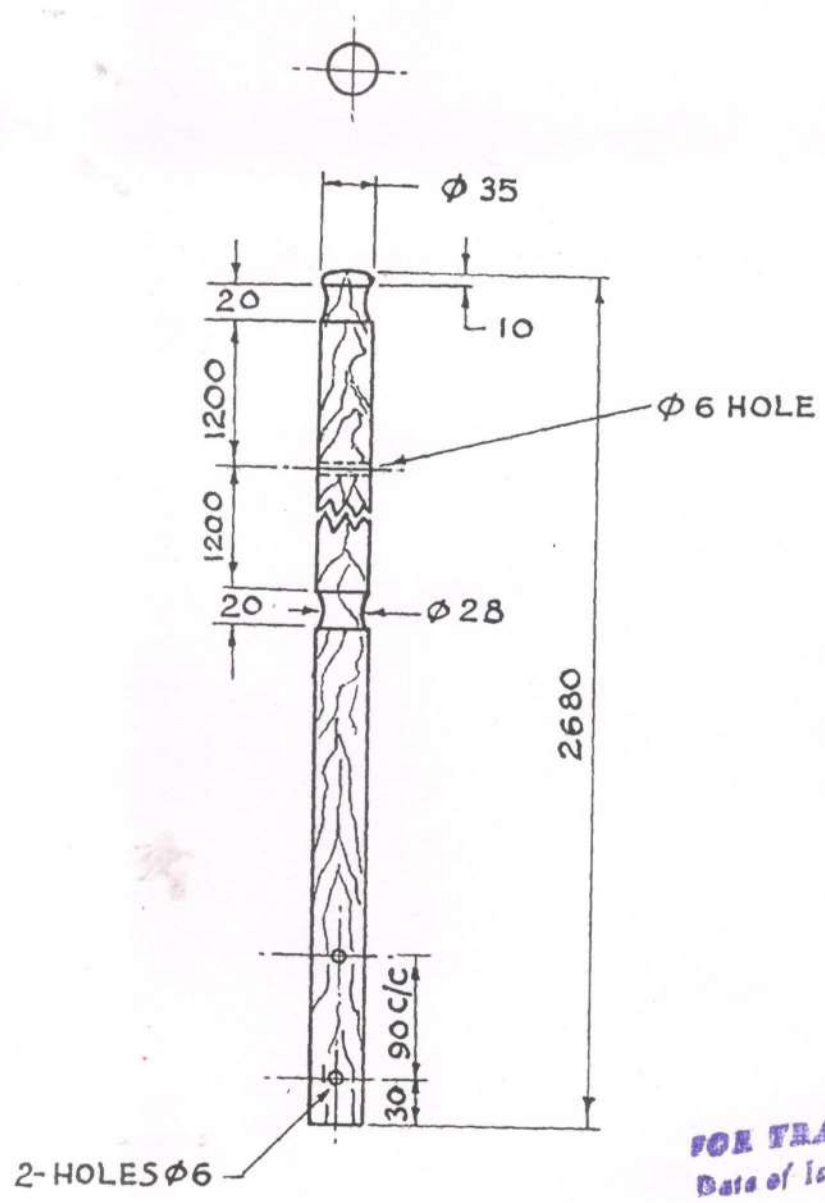


D. C. (I):- 1022-I (P), 4538-I, 5119-I.

					DRN	APPROVED
					TCD	for [Signature]
	(a) D.C. (I) 1-5119-I, CAT/PT. Nos. ADDED & NOMS. FOR WASHER, NUT & BOLT AMENDED.			5.5.87	CHD	CONTROLLER CII, DEHRADUN
	D.C. (I) 1-4538-I. ORG. SEALED.			2.4.83	CHD	DATE: 7.8.80
	D.C. (I) 1-1022-I (P) 1- DRG. PROV. SEALED.			8.8.80	USED	
SYMB	AMENDMENTS	CHD	SIG	DATE	ON	CII-555
MATL & SPEC	SEE DETAILS				BASED ON	
FINISH:- SPEC	SEE DETAILS				CAT/PT No.	6675-000560 (a)
TITLE:-	POLE JOINT ASSY.				DRG No.	CII-555/SA-1
					SCALE	1:2 SH QF.

5D

FOR EXPLANATION OF DIMENSIONING ETC, SEE CII, TECH. INSTRUCTIONS No. 01
THIRD ANGLE PROJECTION
DIMENSIONS ARE IN MM.



FOR TRADE ONLY
Date of Issue: 29.08.80

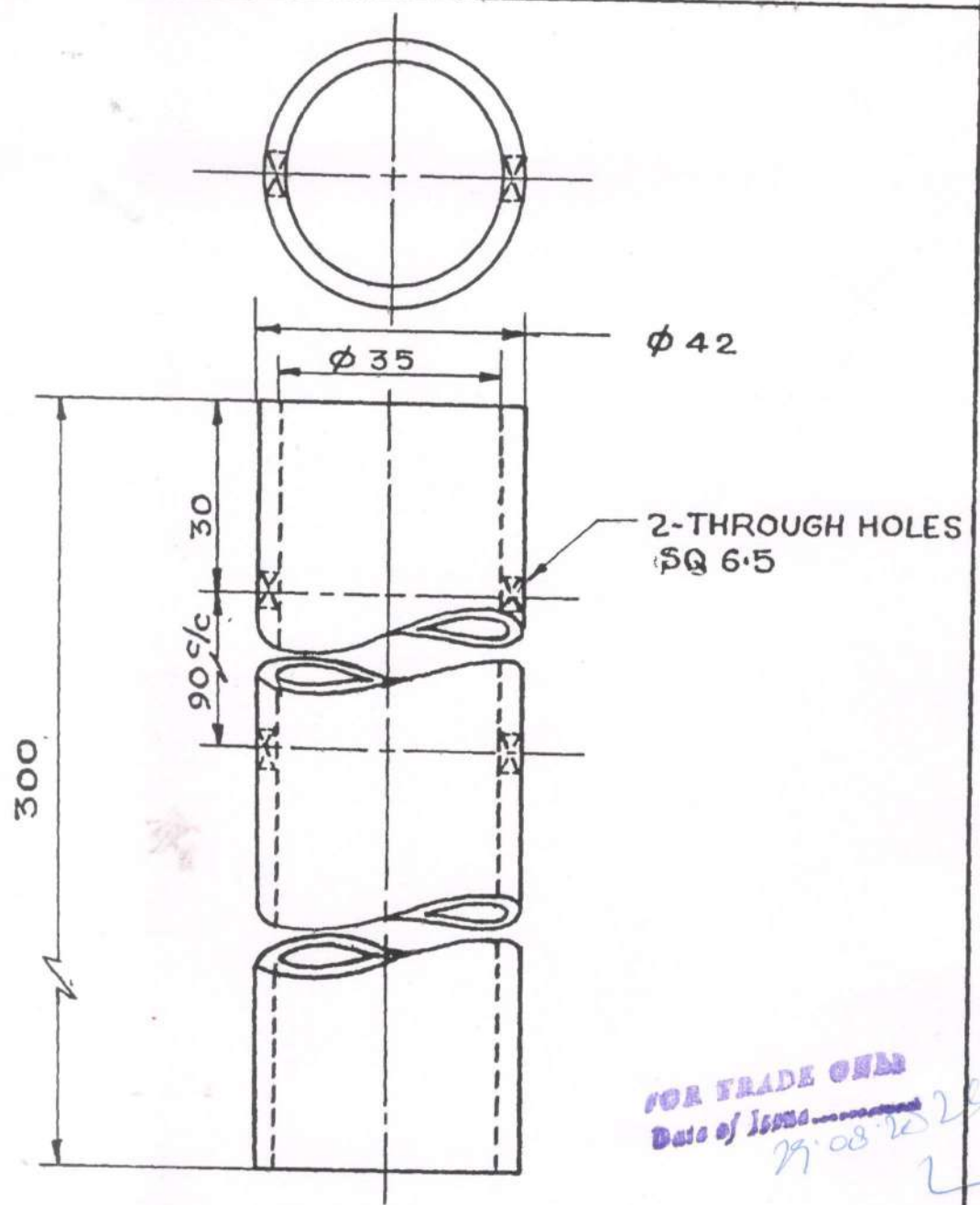
D.C (I):- 1022-I (P), 4538-I, 5119-I

					DRN		APPROVED
					TCD		for <i>[Signature]</i>
	(1) D.C. (I) :- 5119-I. CAT/PT. No. ADDED.	<i>[Signature]</i>	5	15.5.87	CHD		CONTROLLER CII, DEHRADUN
	D.C. (I) :- 4538-I. DRG. SEALED.		<i>[Signature]</i>	2.4.83	CHD	<i>[Signature]</i>	DATE:- 7.8.80
	D.C. (I) :- 1022-I (P) :- DRG. PROV SEALED.	<i>[Signature]</i>	<i>[Signature]</i>	8.8.80	USED ON		CII-555/SA-1
SYM	AMENDMENTS	CHD	SIG	DATE	BASED ON		
MATL. & SPEC.	WELL SEASONED BENTEAK/ POON/BEJASAL/AJNI WOOD IS: 399, MOISTURE CONTENT AS PER IS: 287				CAT/PT NO	6675-000566	(*)
FINISH & SPEC.	VARNISHED, IS: 6127				DRG. No.	CII-555/6	
TITLE :-	POLE, UPPER PART				SCALE	1:5	SH OF

6

5D

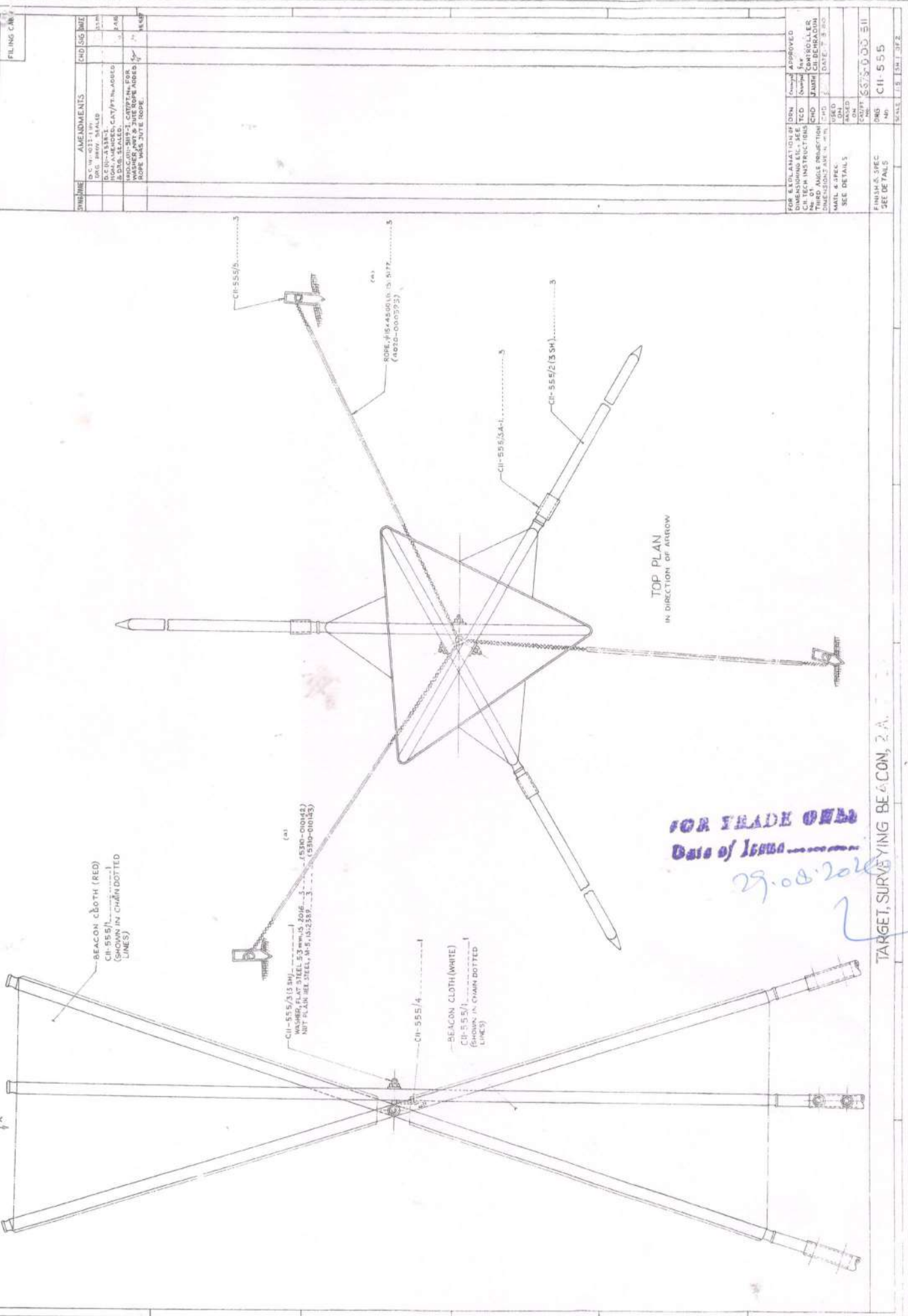
FOR EXPLANATION OF DIMENSIONING ETC, SEE CII, TECH. INSTRUCTIONS No. 1
 THIRD ANGLE PROJECTION DIMENSIONS ARE IN mm



FOR TRADE ONLY
 Date of Issue: 29.08.2022

D.C. (I):- 1022-I (P), 4-538-I, 5119-I.

					DRN		APPROVED
					TCD	<i>Sanjay</i>	for <i>[Signature]</i>
	(a) D.C. (I):- 5119-I. CAT/PT. No. ADDED,	<i>Je</i>	<i>5</i>	15.5.87	CHD	J. MATH	CONTROLLER
	D.C. (I):- 4538-I. DRG. SEALED.	<i>1</i>	<i>24</i>	2.4.83	CHD	<i>[Signature]</i>	DATE:- 07.8.80
	D.C. (I):- 1022-I (P):- DRG. PROV. SEALED.	<i>1</i>	<i>28</i>	8.8.80	USED		
SYM	AMENDMENTS	CHD	SIG	DATE	ON		CII-555/SA-1
MATL & SPEC.	STEEL TUBE SEAMLESS ERW, IS: 3601				BASED ON		
FINISH & SPEC.	GALVANIZED				CAT/PT No	6675-000567	(a)
TITLE:-	POLE, JOINT PIPE				DRG. No	CII-555/7	
					SCALE	2:1	SH OF



TOP PLAN
IN DIRECTION OF ARROW

FOR TRADE ONLY
Date of issue 29.08.2020

TARGET, SURVEYING BEACON, 2. A.

FILING CAR

REVISION	AMENDMENTS	CHD	ISS	DATE
1	D.C. 14021-14-14 D.C. 14021-14-14			13/11/59
2	D.C. 14021-14-14 D.C. 14021-14-14			13/11/59
3	D.C. 14021-14-14 D.C. 14021-14-14			13/11/59
4	D.C. 14021-14-14 D.C. 14021-14-14			13/11/59
5	D.C. 14021-14-14 D.C. 14021-14-14			13/11/59
6	D.C. 14021-14-14 D.C. 14021-14-14			13/11/59
7	D.C. 14021-14-14 D.C. 14021-14-14			13/11/59
8	D.C. 14021-14-14 D.C. 14021-14-14			13/11/59
9	D.C. 14021-14-14 D.C. 14021-14-14			13/11/59
10	D.C. 14021-14-14 D.C. 14021-14-14			13/11/59

NO.	REV.	DATE	BY	CHKD.	APPROVED
1					
2					
3					
4					
5					
6					
7					
8					
9					
10					

FINISH & SPEC
SEE DETAILS

SCALE 1:1.5 (SH) 3/2

NO. CII-555

DATE 29.08.2020

ISSUE NO. 1

DATE 29.08.2020

ISSUE NO. 1

DATE 29.08.2020

ISSUE NO. 1

DATE 29.08.2020

ISSUE NO. 1

DATE 29.08.2020

ISSUE NO. 1

DATE 29.08.2020

ISSUE NO. 1

DATE 29.08.2020

ISSUE NO. 1

DATE 29.08.2020

ISSUE NO. 1

DATE 29.08.2020

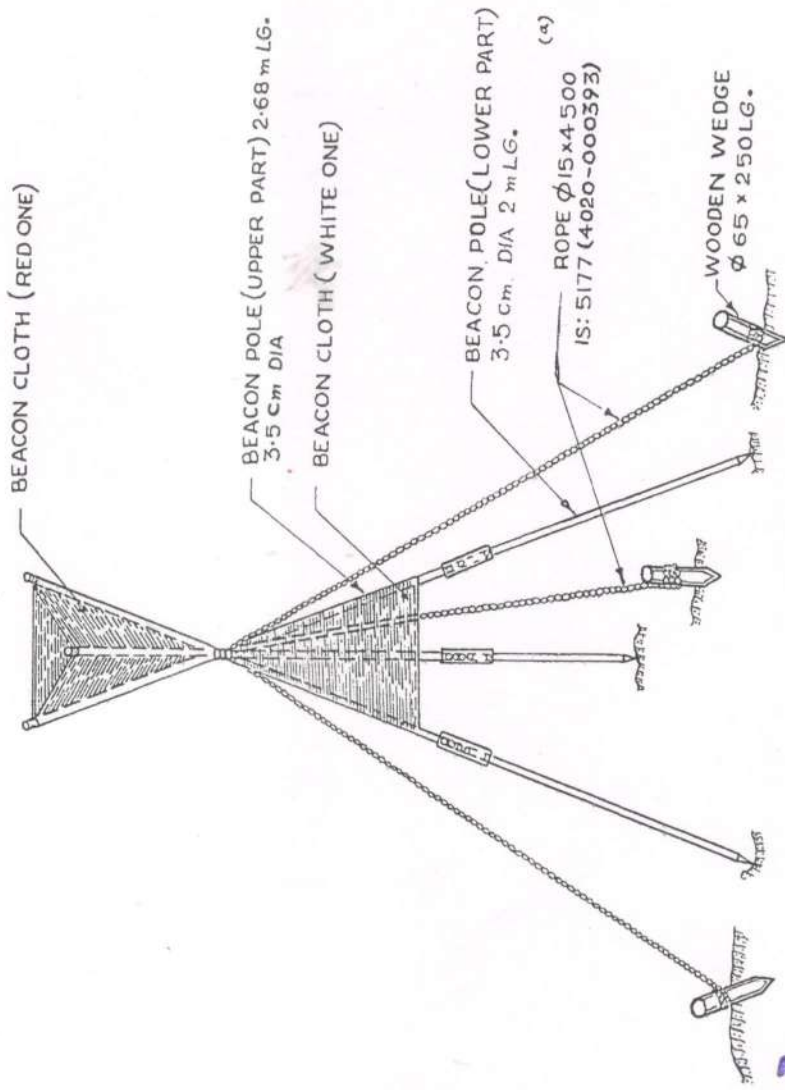
ISSUE NO. 1

DATE 29.08.2020

ISSUE NO. 1

DATE 29.08.2020

FILING CAB



ISOMETRIC VIEW

FOR TRADE ONLY

Date of Issue: 28.08.2020

TITLE :- TARGET, SURVEYING BEACON, 2A

TITLE :-

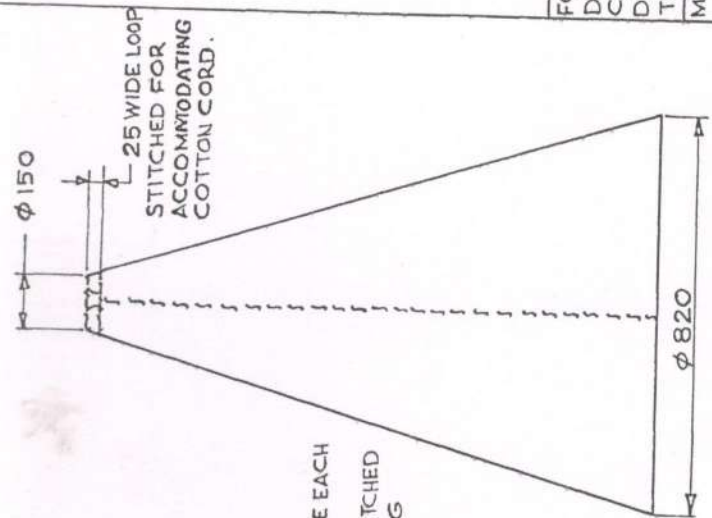
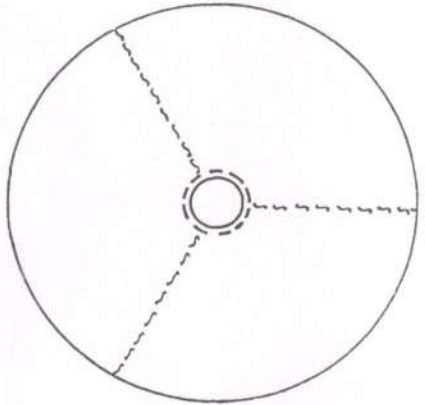
SYB ZONE	AMENDMENTS	CHD	SIG	DATE
	O.C. (1):- 1022-I (P):- DRG PROV SEALED			8.8.80
	D.C. (1):- A-538-I. NOM. AMENDED, CAT/PT.No. ADDED & DRG. SEALED.			24.83
	(4) D.C. (1) :- 5119-I. NOM. AMENDED & CAT/PT.No. ADDED FOR ROPE φ 15 x 4.500			15.5.87

FOR EXPLANATION OF DIMENSIONING ETC, SEE CII, TECH. INSTRUCTIONS No-01	DRN	APPROVED
MATL & SPEC.	TRD	FOR [Signature]
	CHD	J. NATH
	CHD	[Signature]
	USED ON	CONTROLLER
	BASED ON	CII, DEHRADUN
	CAT/PT. No.	DATE: 25-7-80
	DRG No.	
FINISH & SPEC.		
		6675-000511
		CII-555
	SCALE	NTS
		SH 2
		OF 2

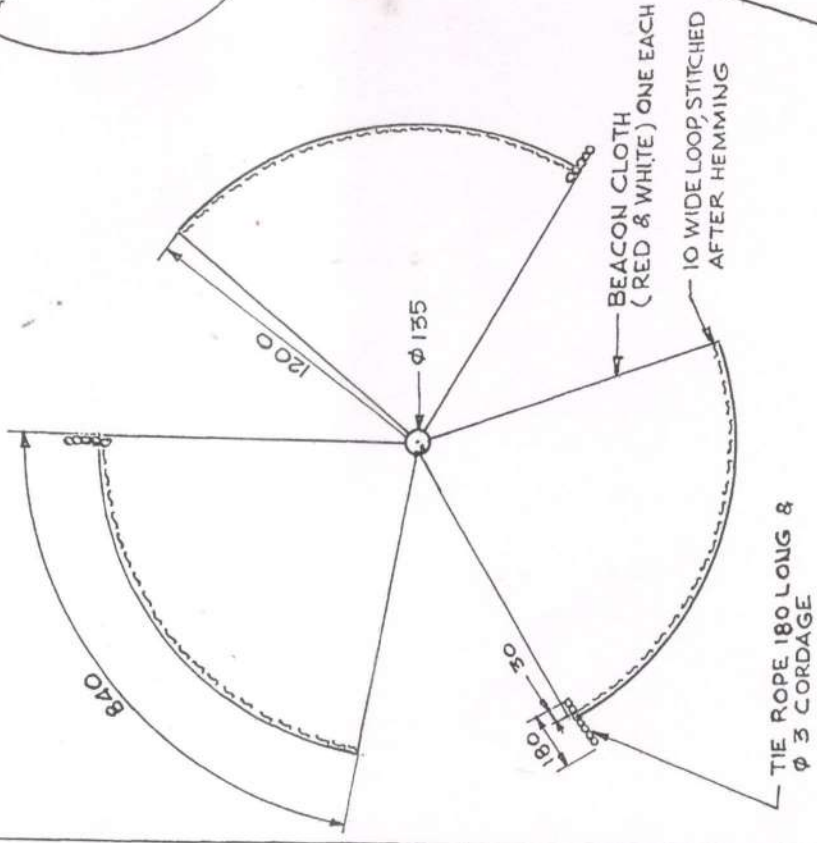
FILING CAB

SYM ZONE	AMENDMENTS	CHD SIG	DATE
	D.C.(1):-1022-I (P)- DRG. PROV. SEALED		8.8.80
	D.C.(1):-4538-I, DRG. SEALED.		2A.63
	(A) D.C.(1):-5119-I, CAT/PT. No. ADDED.	M	15.5.87

FOR EXPLANATION OF DIMENSIONING ETC., SEE C 11, TECH. INSTRUCTIONS No. 01. DIMENSIONS ARE IN M.M. THIRD ANGLE PROJECTION MATL & SPEC.	DRN	APPROVED
	TCD	FOR [Signature]
	CHD	CONTROLLER, C.I.I., DEHRADUN
	CHD	DATE: 7-8-80
	USED	
	ON	
	BASED ON	
	CAT/PT No.	6675-000561
	DRG No.	C11-555/1
	SCALE	1:10 SH OF



SCALE:- 1:10



SCALE = 1:20

NOTE:-
STITCHING SHOWN THUS ~~~~~
STITCHING TO BE DONE WITH COTTON SEWING THREAD, VARIETY No. 16, 15:1720

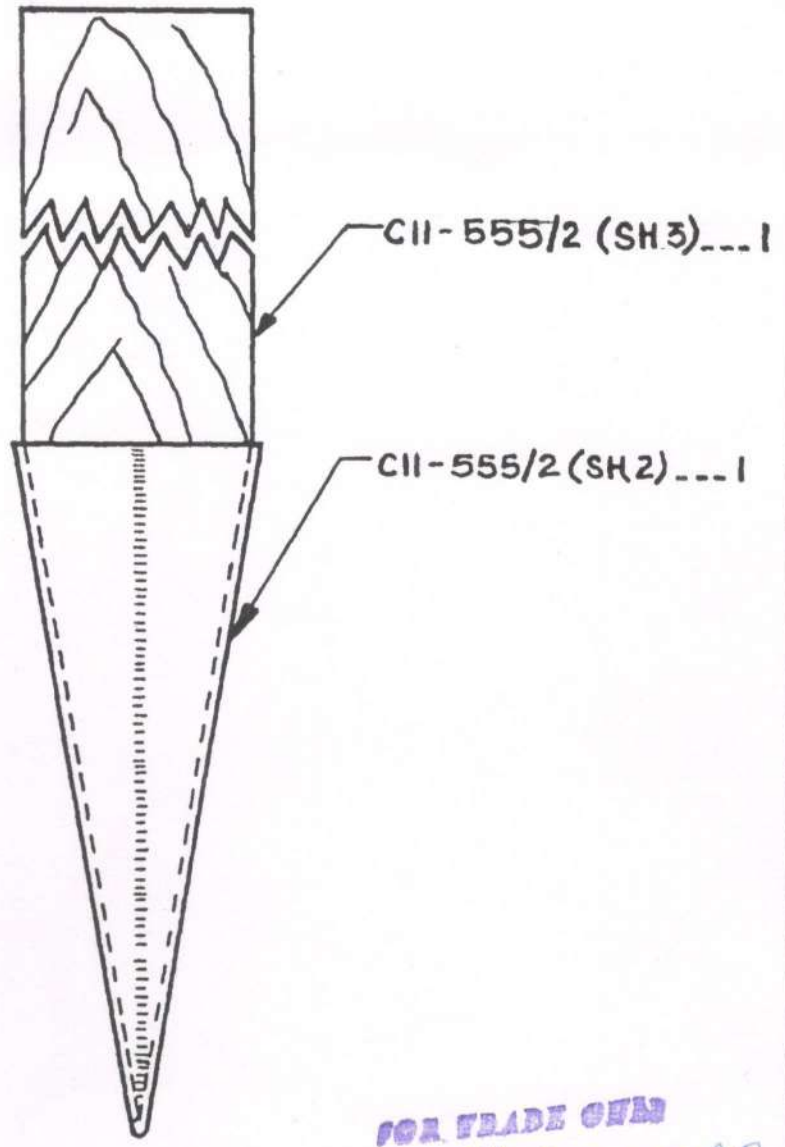
BEACON CLOTH

FOR TRADE COPY
Date of Issue: 15.11.80

Handwritten signature and date: 15.11.80

5D

FOR EXPLANATION OF DIMENSIONING ETC., SEE CII, TECH. INST. No. 01
 THIRD ANGLE PROJECTION DIMENSIONS ARE IN mm.



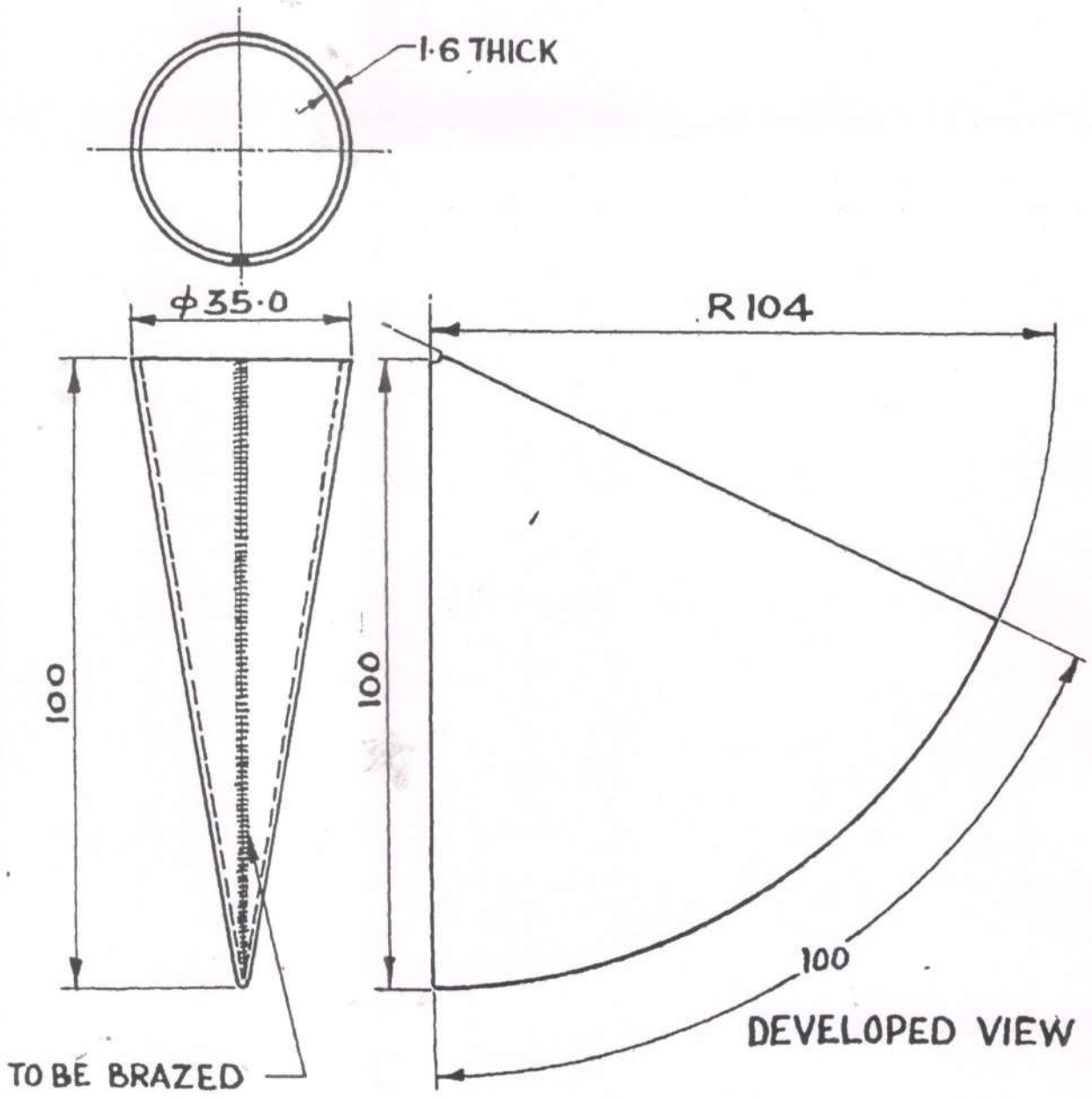
FOR TRADE COPY
 Date of Issue: 29.08.2020
 2

D.C.(01-10 22-I(P), 4538-I, 5119-I.

					DRN	<i>Chandra</i>	APPROVED for: <i>Chandra</i> CONTROLLER CII, DEHRADUN
					TCD	<i>Chandra</i>	
	(4) D.C.(1) 1-5119-I, CAT/PT. No. ADDED.	<i>F</i>	<i>15</i>	15.5.87	CHD	<i>JCR</i>	
	D.C.(1) 1-4538-I, DRG. SEALED.		<i>15</i>	24.8.83	CHD	<i>F</i>	DATE: 7.8.80
	D.C.(1) 1-1022-I (P) :- DRG PROV. SEALED.	<i>L</i>	<i>15</i>	8.8.80	USED ON		CII-555
SYMB	AMENDMENTS	CHD	SIG	DATE			
MATL & SPEC.	SEE SHEET 2 & 3.				BASED ON		
FINISH & SPEC.					CAT/PT No.	6675-000562	
TITLE	POLE, LOWER PART				DRG No.	CII-555/2	
					SCALE	1:1	SH 1 OF 3

57

FOR EXPLANATION OF DIMENSIONING ETC., SEE CII-TECH. INSTRUCTIONS No. 01
THIRD ANGLE PROJECTION DIMENSIONS ARE IN mm.



POLE SHOE

					DRN	(unijal)	APPROVED
					TCD	(unijal)	for <i>Y. K. SINGH</i>
	(a) D.C. (I) :- 5119-3. CAT/PT. No. ADDED.	<i>JK</i>	<i>JK</i>	15.5.87	CHD	J. NATH	CONTROLLER CII, DEHRADUN
	D.C. (I) :- 4538-I. DRG. SEALED.		<i>JK</i>	2.4.83	CHD	<i>JK</i>	DATE :- 7.8.80
	D.C. (I) :- 1022-I (P) :- DRG. PROV. SEALED.		<i>JK</i>	8.8.80	USED ON		CII-555
SYMB	AMENDMENTS	CHD	SIG	DATE	BASED ON		
MATL & :- CARBON STEEL SHEET Gde S.T. 42, SPEC. IS:1079					CAT/PT. No.	6675-000562	(a)
FINISH & :- PAINTED BLACK, IS:168 SPEC.					DRG. No.	CII-555/2	
TITLE :- POLE, LOWER PART					SCALE	1:1	SH-2 OF 3

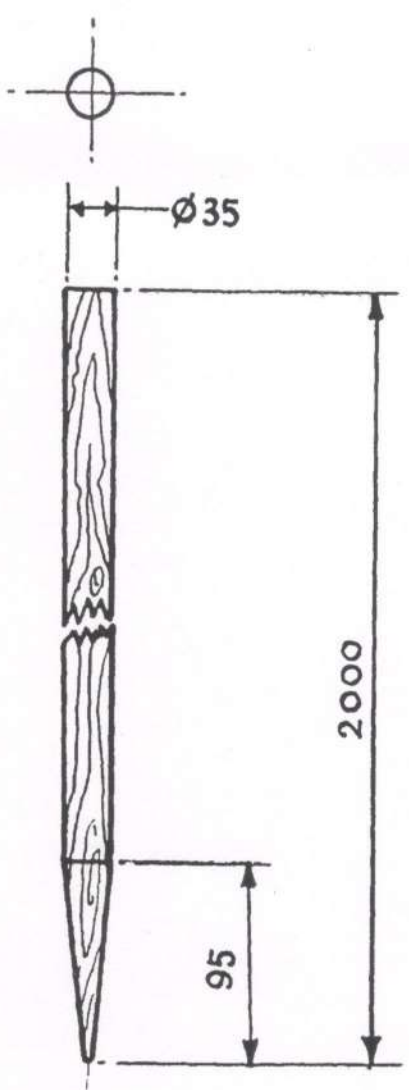
D.C. (I) :- 1022-I (P), 4538-I, 5119-3.

FOR TRADE ONLY
Date of Issue

29.08.2010

5D

FOR EXPLANATION OF DIMENSIONING ETC., SEE CII, TECH INSTRUCTIONS No. 01
 THIRD ANGLE PROJECTION
 DIMENSIONS ARE IN M.M.

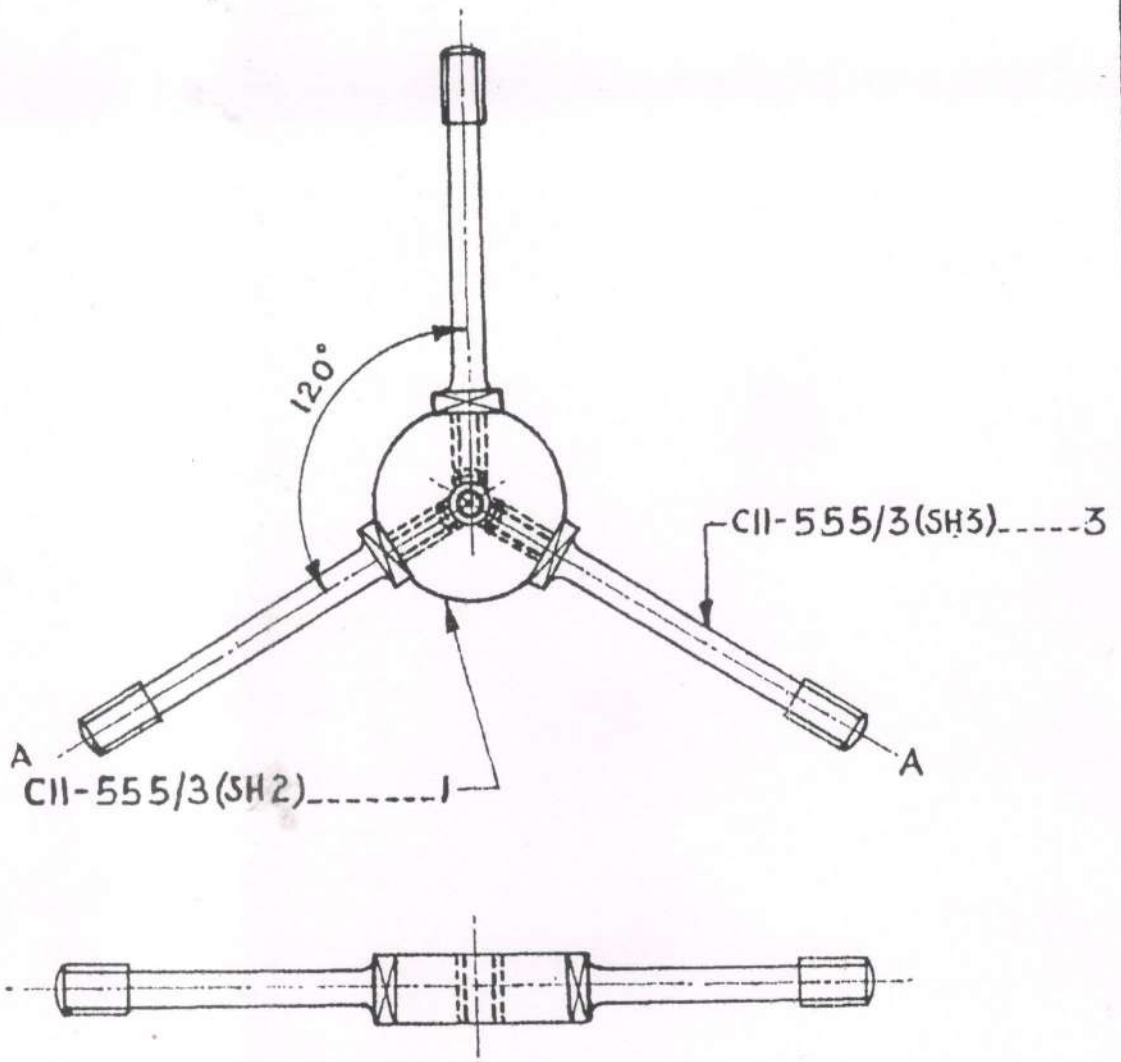


FOR TRADE OFF
 Date of Issue: 29.08.2020
 POLE

D.C. (1):-1022-I (P), 4538-I, 5119-I

					DRN.		APPROVED
					TCD.	<i>[Signature]</i>	for <i>[Signature]</i>
	(a) D.C. (1):-5119-I. CAT/PT. No. ADDED.	<i>[Signature]</i>	<i>[Signature]</i>	15.5.87	CHD.		CONTROLLER
	D.C. (1):-4338-I. DRG. SEALED.		<i>[Signature]</i>	2.4.83	CHD.	<i>[Signature]</i>	DATE:-7.8.80
	D.C. (1):-1022-I (P):- DRG. PROV. SEALED.	<i>[Signature]</i>	<i>[Signature]</i>	8.8.80	USED ON		CII-555
SYM.	AMENDMENTS	CHD	SIG	DATE	BASED ON		
MATL & SPEC.	WELL SEASONED BENTEAK/POON/BEJASAL AINI WOOD, IS: 399 MOISTURE CONTENT AS - PER IS: 287				CAT/PT No.	6675-000562	(a)
FINISH & SPEC.	VARNISHED, IS: 6127				DRG. No.	CII-555/2	
POLE, LOWER PART					SCALE	1:5	SH.3 OF 3

FOR EXPLANATION OF DIMENSIONING ETC., SEE, CII TECH. INSTRUCTIONS NO. 01
 THIRD ANGLE PROJECTION DIMENSIONS ARE IN mm.



SECTION 'A-A'

FOR TRADE ONLY

Date of Issue: 29.08.2010

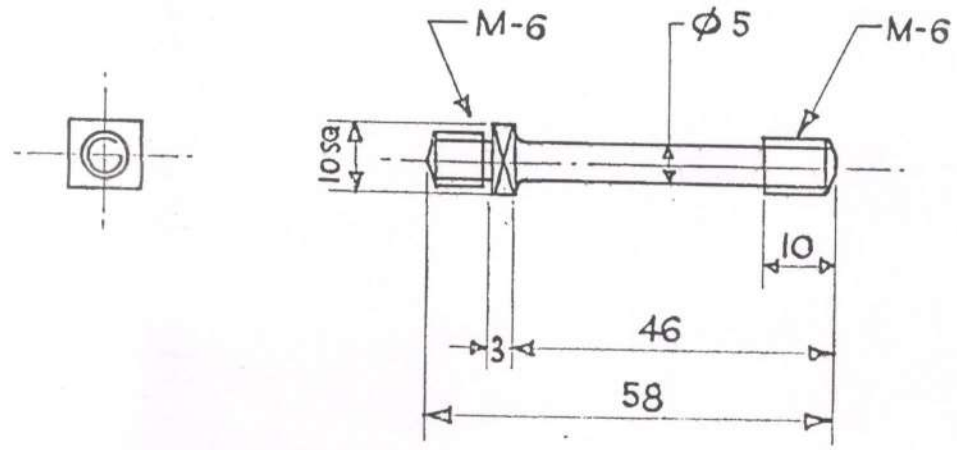
29.08.2010

D.C.(1) :- 1022-I(P), 4538-I, 5119-I.

					DRN	M.S. RAW	APPROVED
					TCD	(Mural)	for
	(a) D.C.(1) :- 5119-I. CAT/PT. No. ADDED.	J	16	15.5.87	CHD	J. NATH	CONTROLLER CII, DEHRADUN
	D.C.(1) :- 4538-I. DRG. SEALED.	W	02	24.8.83	CHD		DATE :- 7.8.80
	D.C.(1) :- 1022-I (P) DRG. PROV. SEALED.	L	2	28.8.80	USED		CII-555
SYMB	AMENDMENTS	CHD	SIG	DATE	ON		
MATL & SPEC.	SEE SHEET 2 & 3				BASED ON		
FINISH & SPEC. :-					CAT/PT No.	6675-000563	
TITLE :-	CONNECTING HINGE				DRG No.	CII-555/3	
					SCALE	1:1	SH.1 OF 3

50

FOR EXPLANATION OF DIMENSIONING ETC., SEE CII, TECH. INSTRUCTIONS NO. 01
THIRD ANGLE PROJECTION
DIMENSIONS ARE IN mm



FOR TRADE USE
Date of Issue: 29.08.2020

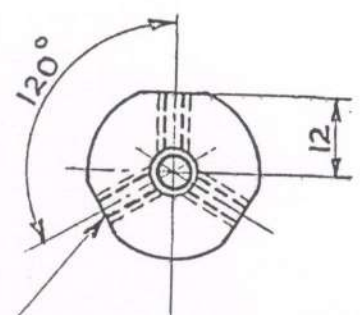
STUD

D.C. (U) :- 1022-I (P), 4538-I, 5119-I, 7204-I.

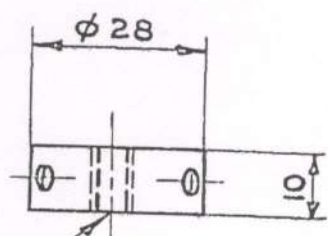
					DRN.	APPROVED	
(b) DC: 7204-I. MATL. AMENDED.					TCD.	for	
(a) D.C. (I) :- 5119-I. CAT/PT. No. ADDED.					CHD.	CONTROLLER	
D.C. (I) :- 4538-I. DRG. SEALED.					CHD.	CII, DEHRA DUN	
D.C. (U) :- 1022-I (P) :- DRG. PROV. SEALED.					USED ON	DATE :- 7.8.80	
SYMB	AMENDMENTS				CHD	SIG	DATE
MATL & SPEC.	(b) IS: 9550-2001. BRIGHT-STEEL BAR COLD-DRAWN Gde, 3, IS: 7270				CII-555		
FINISH & SPEC.	PHOSPHATED, IS: 3618				BASED ON	CAT/PT No. 6675-000563 (a)	
TITLE:- CONNECTING HINGE					DRG. No.	CII-555/3	
					SCALE	1:1	SH.2 OF 3

51

FOR EXPLANATION OF DIMENSIONING ETC; SEE TECH. INSTRUCTIONS No.01
 THIRD ANGLE PROJECTION
 DIMENSIONS ARE IN mm



3 HOLES, TAPPED, M-6



TAPPED M-5

FOR TRADE COPY
 Date of Issue: 29.08.2010

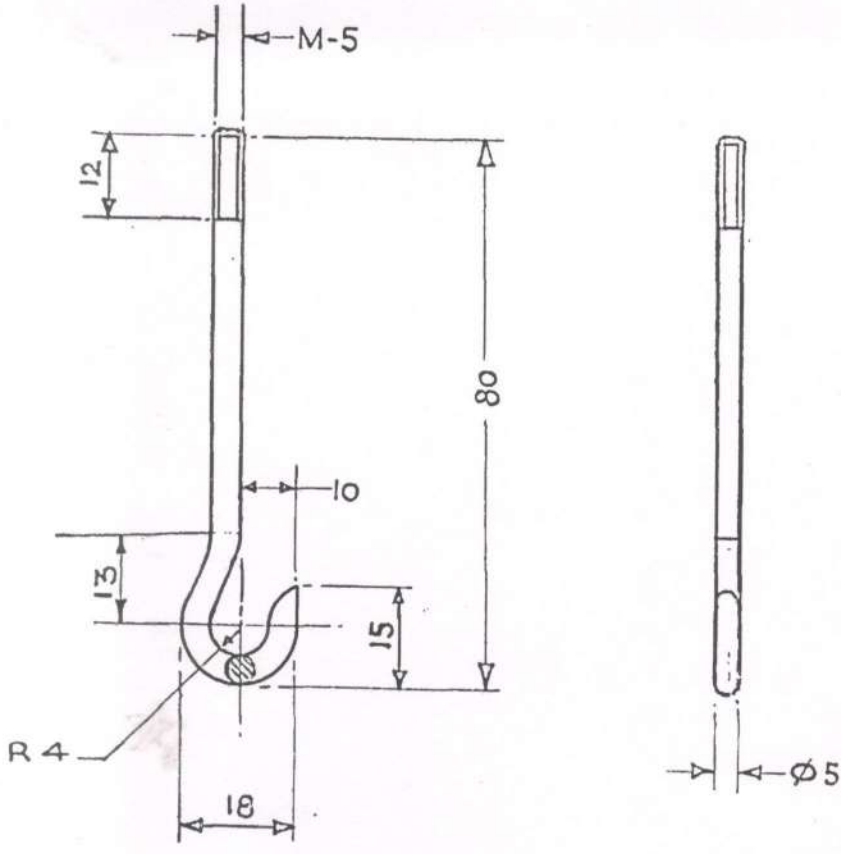
CONNECTING PIECE

	(b) DC: 7204-I. MATL. AMENDED.				DRN		APPROVED
	(a) D.C. (I):- 5119-I. CAT/PT. No. ADDED.			16.7.18	TCD		for
	D.C. (I):- 4538-I. DRG. SEALED.			15.5.87	CHD		CONTROLLER
	D.C. (I):- 1022-I (P). DRG. PROV. SEALED.			2.4.83	CHD		DATE:-7.8.80
				8.8.80	USED		
SYMB	AMENDMENTS	CHD	SIG	DATE	ON		CII-555
MATL & SPEC	(b) IS: 9550-2001 BRIGHT STEEL BAR COLD DRAWN Gd 3, IS: 7270				BASED ON		
FINISH & SPEC	PHOSPHATED, IS: 3618				CAT/PT No.	6675-000563	(a)
TITLE:-	CONNECTING HINGE				DRG No.	CII-555/3	
					SCALE	1:1	SH-3 OF 3

D.C. (I):- 1022-I (P), 4538-I, 5119-I, 7204-I.

50

FOR EXPLANATION OF DIMENSIONING ETC; SEE CII, TECH. INSTRUCTION NO. 01
THIRD ANGLE PROJECTION
DIMENSIONS ARE IN mm



FOR GRADE OFF

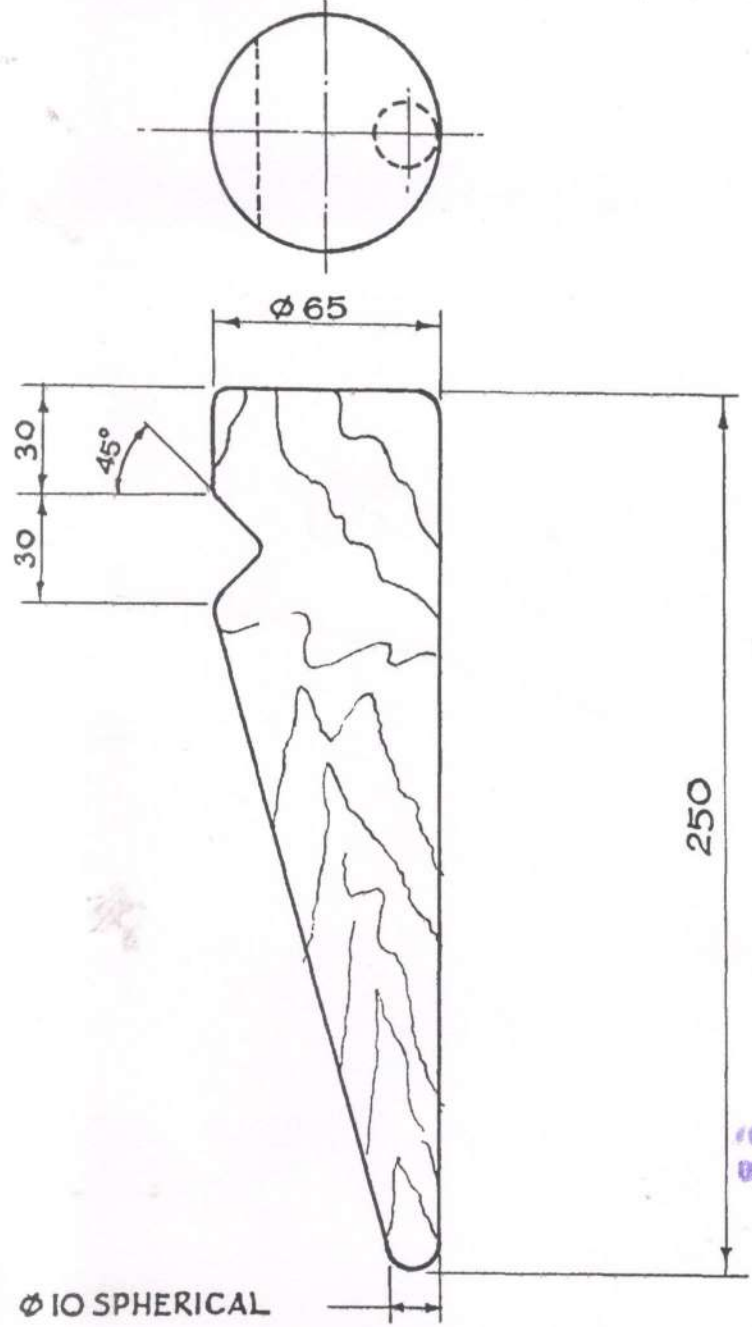
Date of Issue 27.08.2020

D. C. (I):- 1022-I (P), 4538-I, 5119-I, 7204-I.

	(b) DC: 7204-I. MATL. AMENDED.				DRN.	MSRAN	APPROVED
	(a) D.C. (I):- 5119-I. CAT/PT. No. ADDED.			16-7-18	TCD.		for
	D.C. (I):- 4538-I. DRG. SEALED.			15.5.87	CHD.	J.NATH	CONTROLLER CII, DEHRA DUN
	D.C. (I):- 1072-I (P):- DRG. PROV. SEALED.			2.4.83	CHD.		DATE:- 7.8.80
				8.8.80	USED ON	CII-555	
SYMB	AMENDMENTS	CHD	SIG.	DATE	BASED ON		
MATL. & SPEC.	M.S. ROD, IS: 2255 MILD STEEL WIRE ROD, IS: 2255-1997			(b)	CAT/PT NO.	6675-000564 (a)	
FINISH & SPEC.	PHOSPHATED, IS: 3618				DRG. NO.	CII-555/4	
TITLE	HOOK				SCALE	1:1	SH OF

50

FOR EXPLANATION OF DIMENSIONING ETC, SEE CII, TECH. INSTRUCTIONS No.01
THIRD ANGLE PROJECTION DIMENSIONS ARE IN MM.



FOR TRADE COPY
Date of Issue: 29.08.2012

D.C. (1):- 1022-I (P), 4538-I, 5119-I, 6248-I.

	(b) D.C.:- 6248-I, NOM. & CAT/PT. No. AMENDED.	<i>h</i>	<i>o</i>	253.98	TCD	<i>Shibhat</i>	APPROVED
	(a) D.C. (1):- 5119-I, NOM. AMENDED & CAT/PT. No. ADDED.	<i>h</i>	<i>15</i>	15.5.87	CHD		for <i>Shibhat</i>
	D.C. (1):- 4538-I DRG. SEALED.		<i>15</i>	2.4.83	CHD	<i>Shibhat</i>	CONTROLLED
	D.C. (1):- 1022-I (P):- DRG. PROV SEALED.	<i>h</i>	<i>15</i>	8.8.80	USED		CII, DEHRADUN
SYM	AMENDMENTS	CHD	SIG	DATE	ON	CII-555	
MATL & SPEC.	WOOD SAL/TEAK OR DHAMAN, IS: 399				BASED ON		
FINISH					CAT/PT No.	5210-007783 (a)	
TITLE:-	(a) (b)	HINGE, SPECIAL				DRG. No.	CII-555/5 (b)
		SCALE	1:2	SH OF			