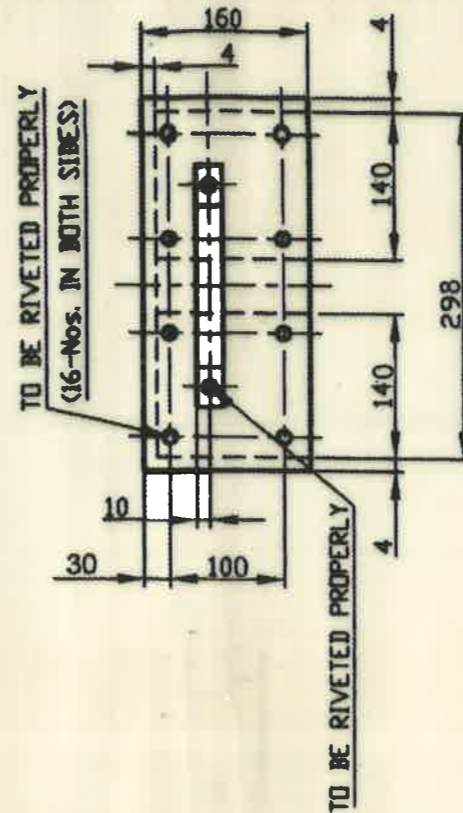
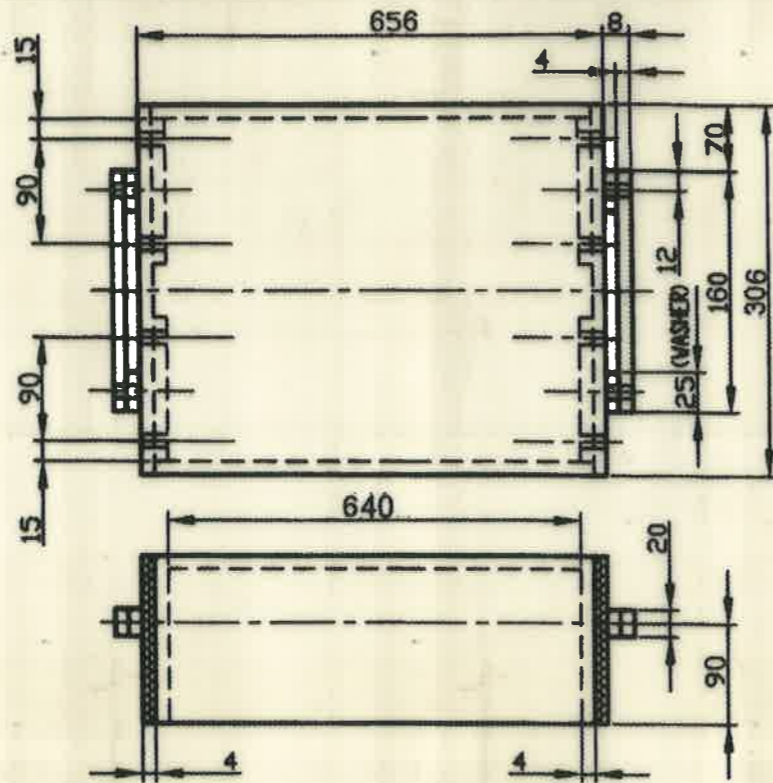
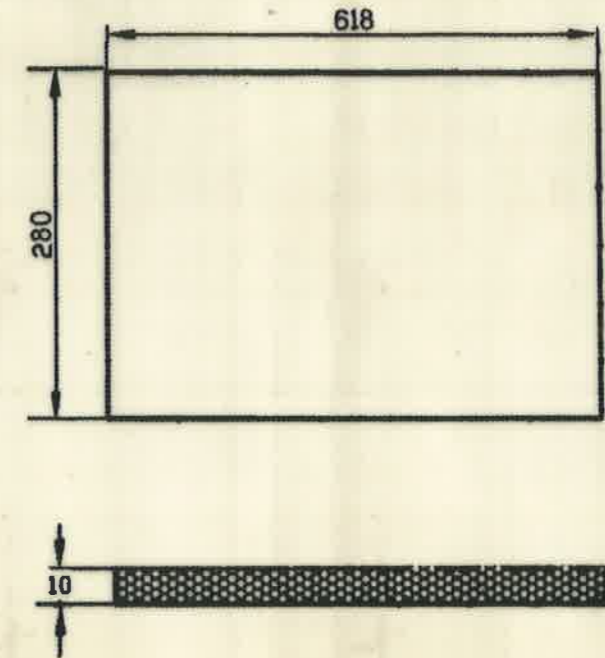


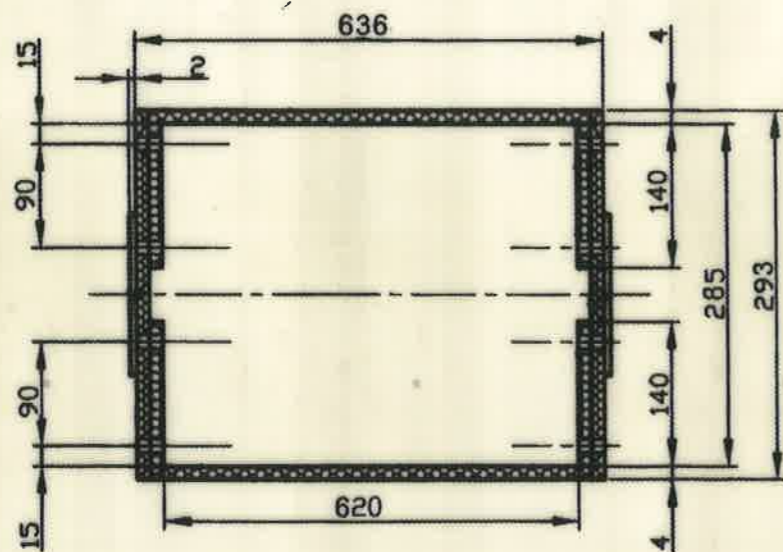
DRG. NO. :- CO-527



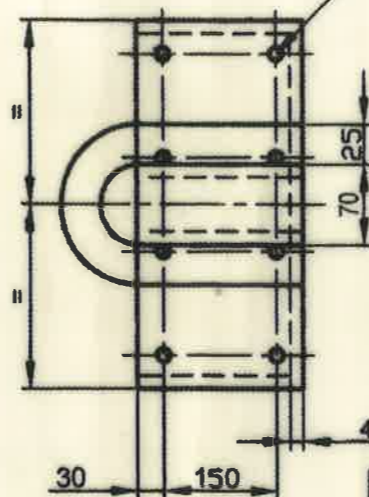
BOX (TOP/LID)



BASE SUPPORT



TO BE RIVETED PROPERLY (16-Nos. IN BOTH SIDES)



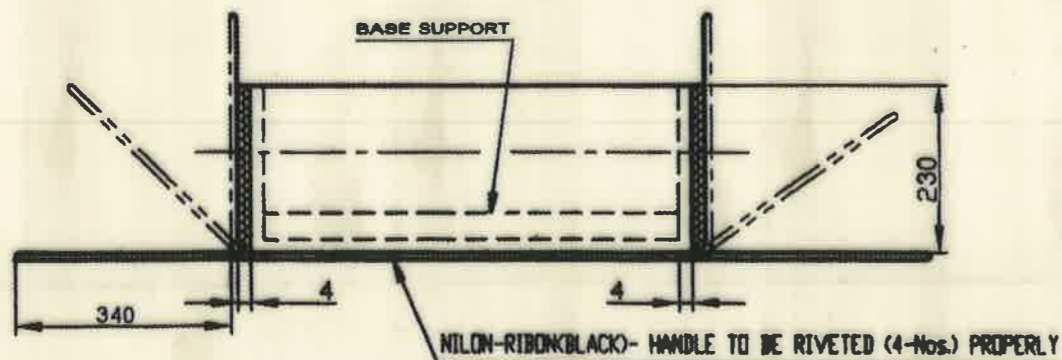
BOX (BOTTOM)

MATL. :-

FOR BOX (TOP/LID & BOTTOM) :- HIGH IMPACT CO-POLYMER OF POLYPROPYLENE CORRUGATED SHEET OF 4mm. THICKNESS & DENSITY OF 900-1100 GSM. IN BLUE COLOUR.

FOR BASE SUPPORT :- EXPANDED P.E. FOAM WITH DENSITY OF 20-35 Kg/m³ HAVING TENSILE STRENGTH OF 1.5-3.5 Kg/cm² (TRANSVERS DIRECTION), 2.5-5.0 Kg/cm² (MACHINE DIRECTION) AS PER IS:7888

GUIDE TO SUPPLY ONLY



WM/PISTOL:- <i>YATO 04/10/18</i>	COMPT.:- PISTOL (0.32)	STUPE DRG. No.-
SCHEDULE NO 1	PACKING BOX (FOR 10 NOS. PISTOL CABINETS)	
SCALE:-N.T.S. PROJECTION THIRD ANGLE		
DRAWN BY: <i>S. Haller 02/10/18</i>	DRG. NO. :- CO-527	
CHECKED BY: <i>[Signature]</i>	No. of SHTS- 1	
APPROVED BY: <i>[Signature]</i>	SHT. No.- 1	
CONCURRED BY: JWM/PISTOL	M / C :	
SIGN: <i>[Signature]</i>	DATE: <i>20/10/18</i>	G. & S. FY. COSSIPURE

DT. & SIG. DESCRIPTION AMENDMENTS