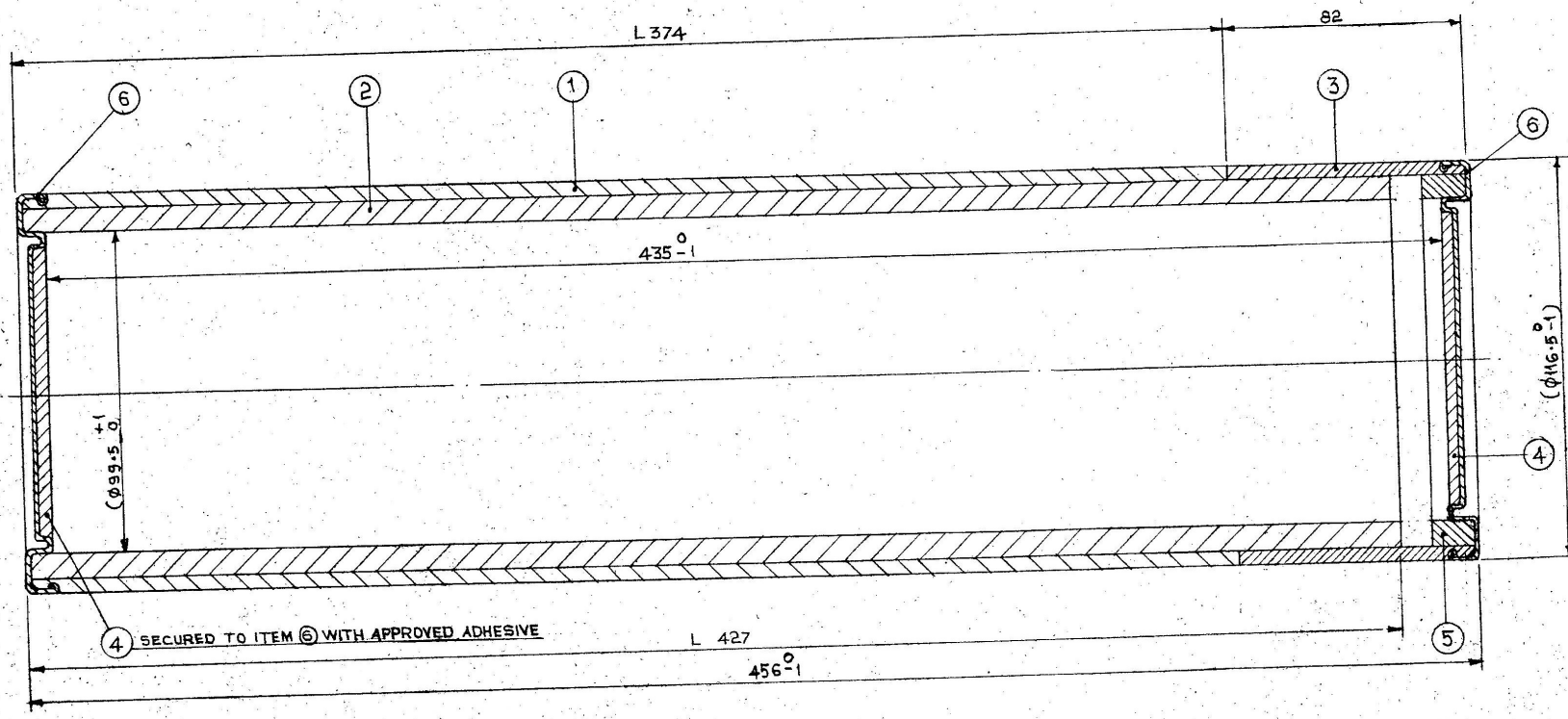


DRG CONVENTIONS CONFORM TO IS: 696
 DIMNS ARE IN mm
 GEN TOL - MEDIUM CLASS TO IS: 2102

LIST OF COMPONENTS					
ITEM No	DESCRIPTION	DRG No	DET No	PART No	No OFF
1	TUBE OUTER	SEE NOTE 3			1
2	TUBE INNER				1
3	TUBE LID				1
4	DISC MILL BOARD $\phi 90 \times 7.5$ THICK TO SPEC JSS 1-51-01	-			2
5	RING FOR LID	CIA/AMMN/1292	5	1SV 1148	1
6	CAP END	CIA/AMMN/1292	6	1SV 1149	2



NOTES —

- FOLLOWING MANDRILS TO BE USED FOR ITEM No:
 - ① CIA/AMMN/1292/1
 - ② CIA/AMMN/1292/2
 - ③ CIA/AMMN/1292/3
- MANUFACTURE SHOULD BE IN ACCORDANCE WITH SPEC IA. 1240
- FOR ALL OTHER DETAILS SEE DRG No 1SV 376 A

DRN RMN	CHKD	TRO	COMP	ASSY DRG ARDE (353, SHT 4)		
CD	PASSED	SCALE - 1:1		DESIGN AUTHORITY		
APPROVED	FOR DIRECTOR	EST MASS		ARDE PUNE-21		
		GAUGE SCHD				
		DATE 4-6-86				
IR No	DATE	AUTHORITY	ZONE	CD	GO	MATL
1	23-9-86	529/65103001/AM ARM-23A V-2	AMENDED VIDE AL No 560			
DRG SEALED	PROVISIONAL	BY	SPECIAL CR (CA)	11	8/8/86	PROTECTIVE FINISH
CONTAINER ROLLED PAPER LAMINATED WATER PROOF				DRG No		
BASED ON CONTAINER 22B (SPIRALLY WOUND)				ARDE 1953		
				DET No	SHTS	SHT No
				PART No		
				D SEAT No		
				ANSP. D. D & P (AIR) NEW DELHI		