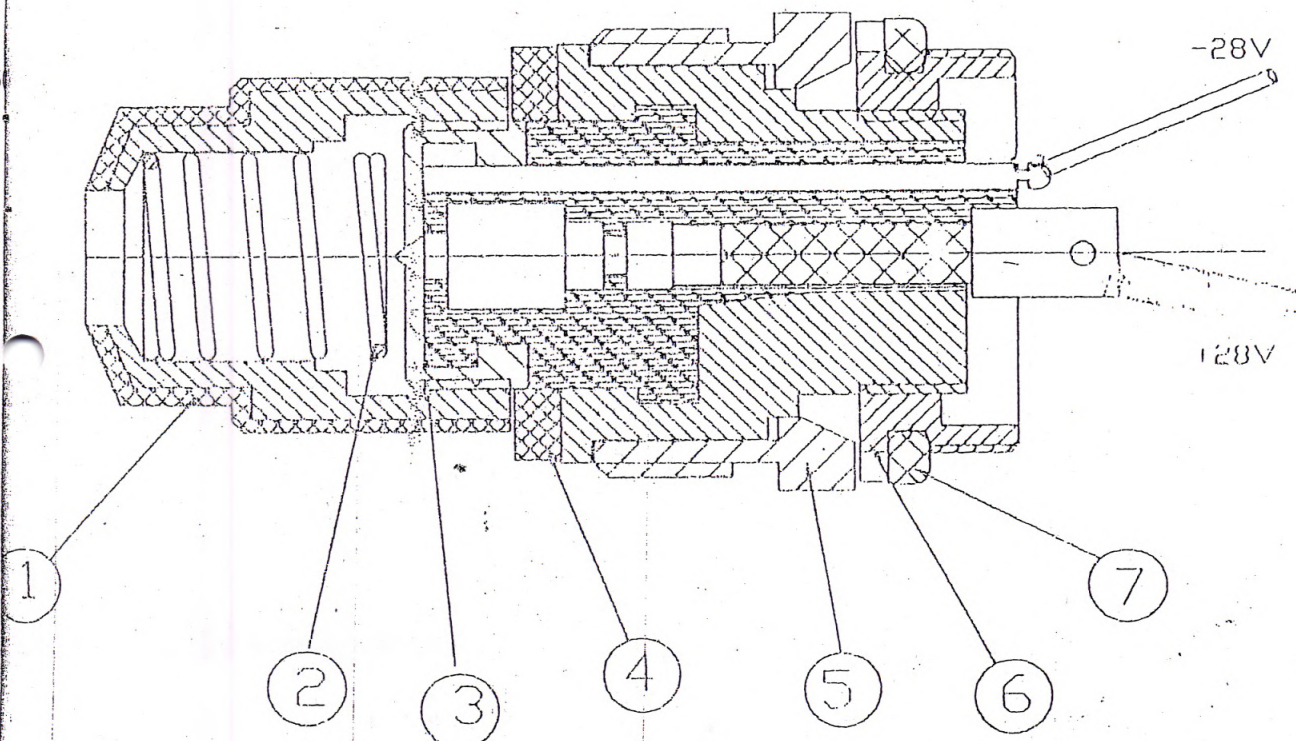


INSULATION RESISTANCE BETWEEN
PIN AND BODY > 100 M Ω.



NOTE:- LENGTH OF WIRE- 500 mm.

7.	GASKET	NAICJ) SK 220/7
6.	COUPLING	NAICJ) SK 220/6
5.	NUT	NAICJ) SK 220/5
4.	WASHER	NAICJ) SK 220/4
3.	ADAPTOR ASSY.	NAICJ) SK 220/3
2.	SPRING	NAICJ) SK 220/2
1.	IGNITER HOLDER	NAICJ) SK 220/1
ITEM NO..	NOMENCLATURE	DRAWING NO.

PYRO CTGE. HOLDER ASSY.
FOR SPC

SCHEDULE OF COMPONENTS

NAVAL ARMAMENT INSPECTORATE
JABALPUR

SCALE 1-21

SKETCH No-220

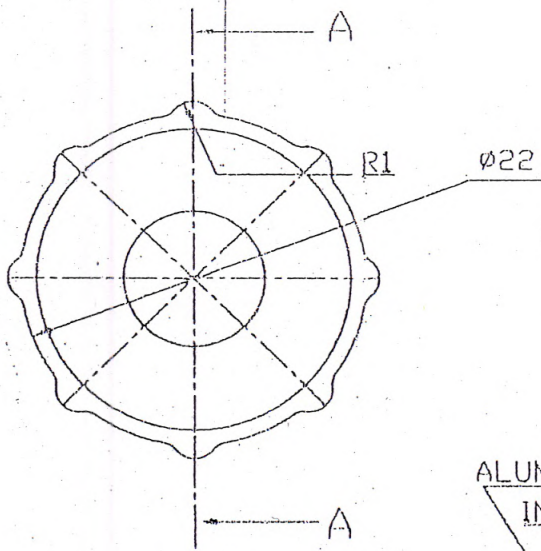
DRN- *[Signature]*

DIMENSIONS ARE IN mm

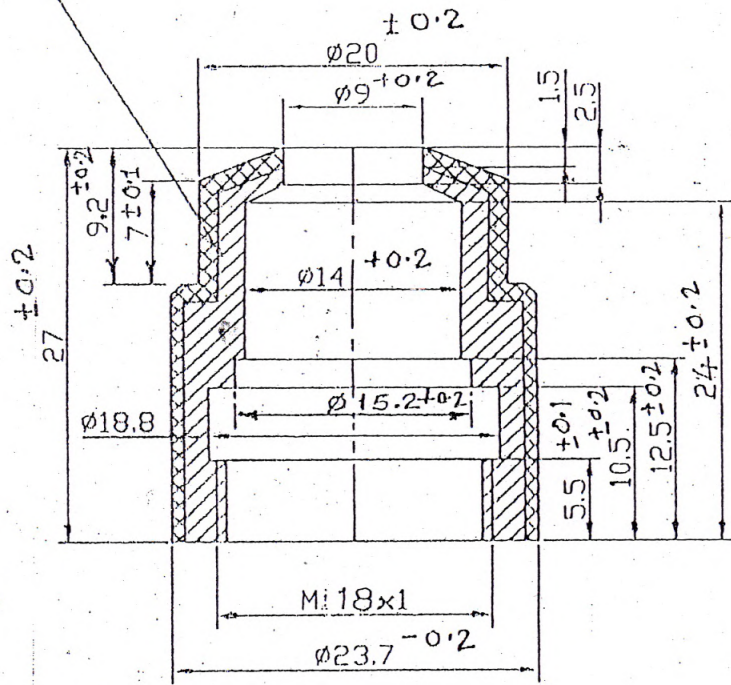
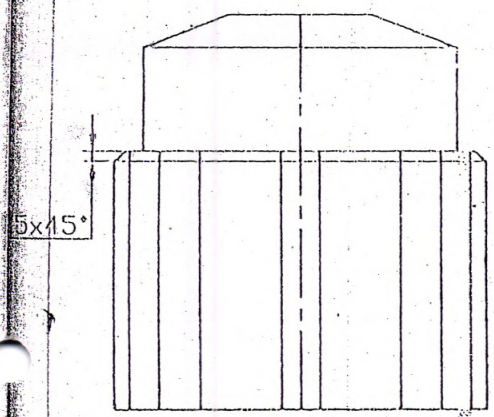
DATE: 15-9-03

MAIL:- SEE DETAILS DRG

APPROVED - *[Signature]*



ALUMINUM CAP TO BE MOLDED
IN SIDE BEKELITE CAP



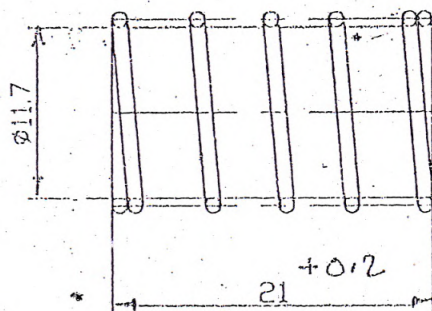
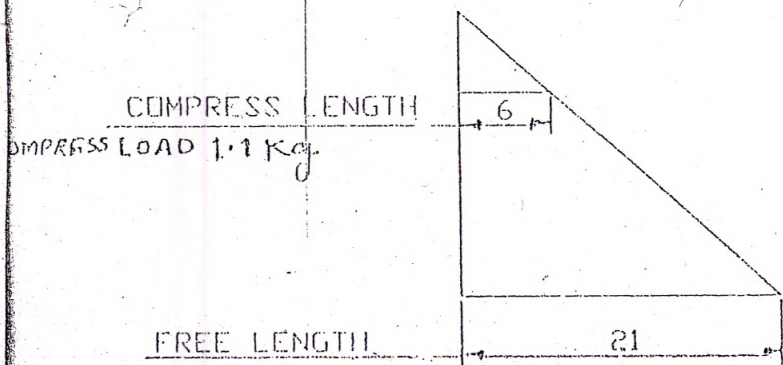
SECTION 'A-A'

IGNITER HOLDER

MATL - BEKELITE TO SPEC
JSS: 1097 Gd A.

APPROVED *[Signature]*

NAVAL ARMAMENT INSPECTORATE JABALPUR	
SCALE 1-21	SKETCH No.- 220/1
DRN - <i>[Signature]</i>	DIMENSIONS ARE IN mm
DATE 12-7-03	MATL - SEE DRG.



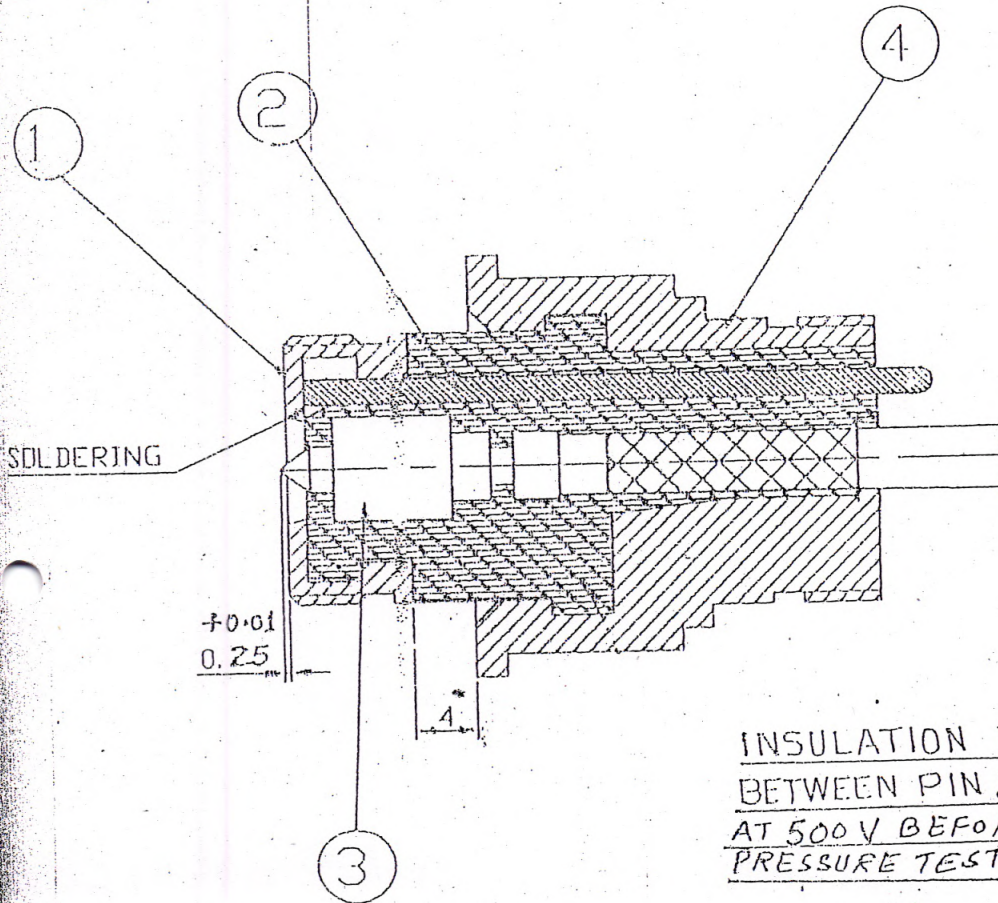
FOUND : - L.H.
 D. : - ø11.7
 WIRE DIA : - ø1.0
 NUMBER OF COIL : . . - 6
 NUMBER OF EFFECTIVE COIL : . . - 5

SPRING

MATL - SPRING STEEL T_a IS-4154-67 Gd 2

NAVAL ARMAMENT INSPECTORATE JABALPUR	
SCALE 1-20	SKETCH No. - 220/2
DRN - <i>D. D. D.</i>	DIMENSIONS ARE IN mm
DATE 12-7-03	MATL - STEEL

APPROVED - *M. K. D.*



INSULATION RESISTANCE
BETWEEN PIN & BODY > 100 M-Ω
AT 500 V BEFORE AND AFTER
PRESSURE TEST.

NOTE: ITEM No. 2 TO BE SOLDERED
 WITH ITEM No. 1 BEFORE ASSEMBLY.

ADAPTOR ASSEMBLY

ITEM No 1, 3 & ITEM 4 TO BE
 FILLED WITH GLASS FILLED
 EPOXY RESIN TO JSS: 1097 Gd-A

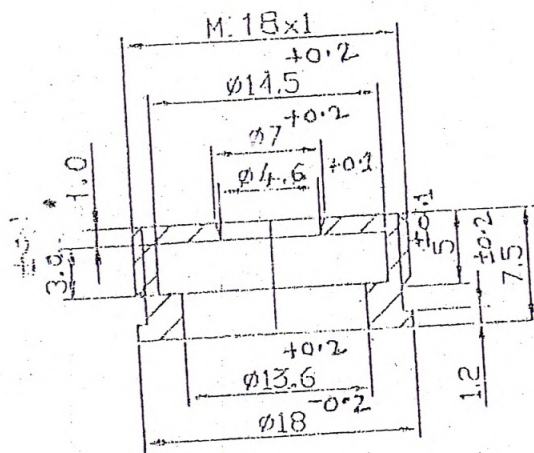
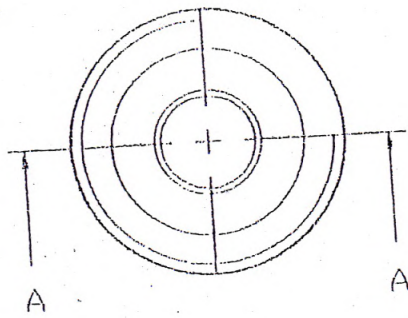
4.	HOLDER	NAI(J) SK 220/3/4
3.	FIRING PIN	NAI(J) SK 220/3/3
2.	BRASS PIN	NAI(J) SK 220/3/2
1.	ADAPTOR	NAI(J) SK 220/3/1
ITEM NO.	NOMENCLATURE	DRAWING NO.

SCHEDULE OF COMPONENTS

NAVAL ARMAMENT INSPECTORATE,
 JABALPUR

SCALE 1-21	SKETCH No.- 220/3
DRN - <i>[Signature]</i>	DIMENSIONS ARE IN mm
DATE 15-9-03	MATL - SEE DETAIL DRG.
APPROVED - <i>[Signature]</i>	

PAK TEST :- THE MOULDED
 ADAPTOR SHOULD NOT SHOW ANY
 CRACKS WHEN TESTED AT A PRESSURE
 281 ± 18 kgf/cm² FOR A PERIOD
 ONE MINUTE.



SECTION 'A-A'

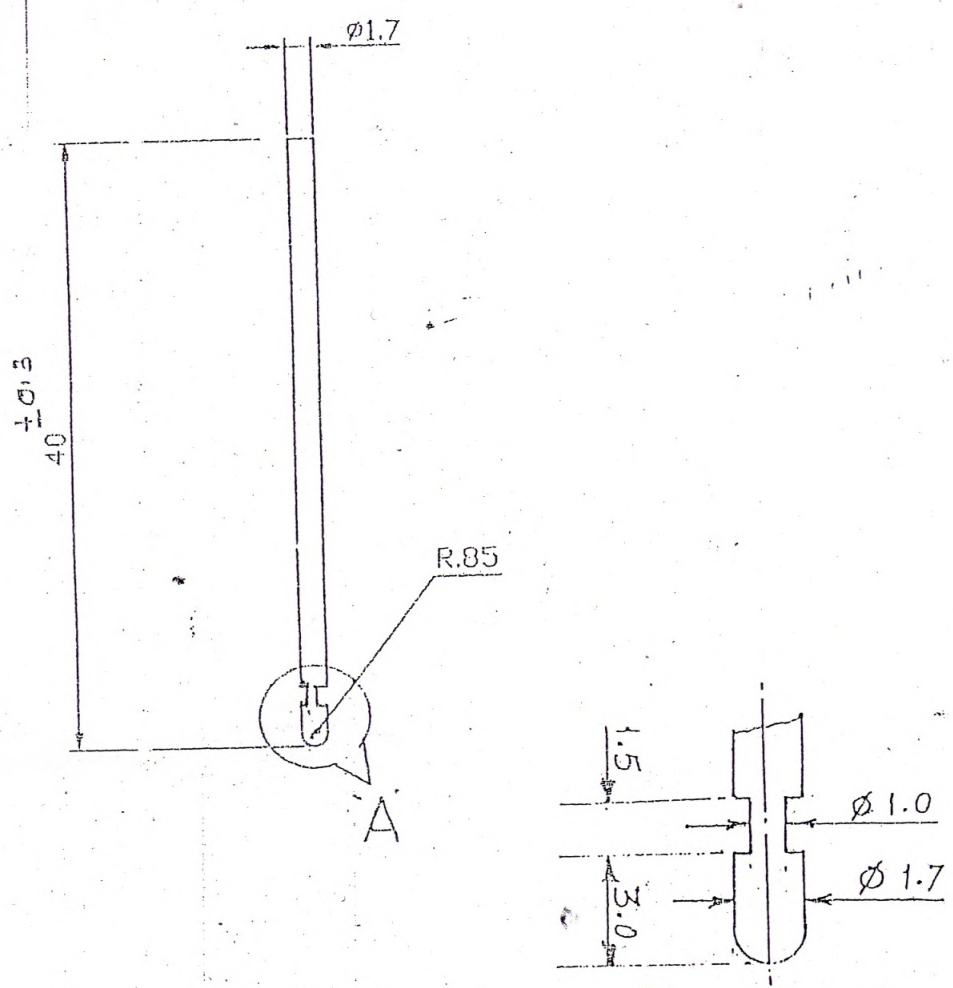
ADAPTOR

MATL. :- STEEL

MATL. SPECN. :- BS : 970, E11-24

APPROVED: *[Signature]*

NAVAL ARMAMENT INSPECTORATE JABALPUR	
SCALE 1-211	SKETCH No. 220/3/1
DRN. <i>[Signature]</i>	DIMENSIONS ARE IN mm
DATE 12-7-03	MATL. SEE DRG.



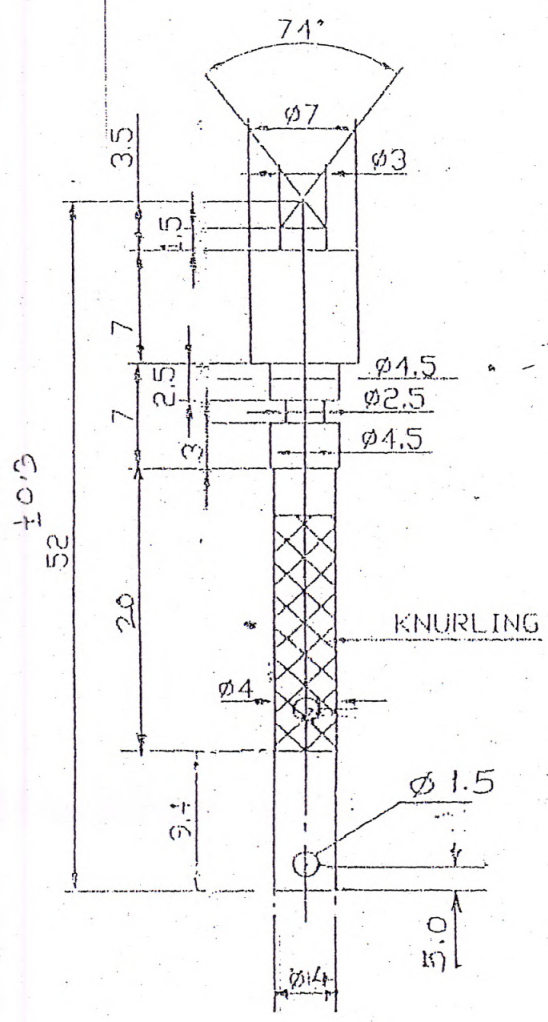
ENLARGED VIEW 'A'
SCALE:- 5:1

BRASS PIN

MATL SPECN:- IS-319-1974 TYPE-I

NAVAL ARMAMENT INSPECTORATE JABALPUR	
SCALE :- 2:1	SKETCH No.- 220/3/2
DRN - <i>[Signature]</i>	DIMENSIONS ARE IN mm
DATE 15-9-03	MATL-BRASS

APPROVED *[Signature]*



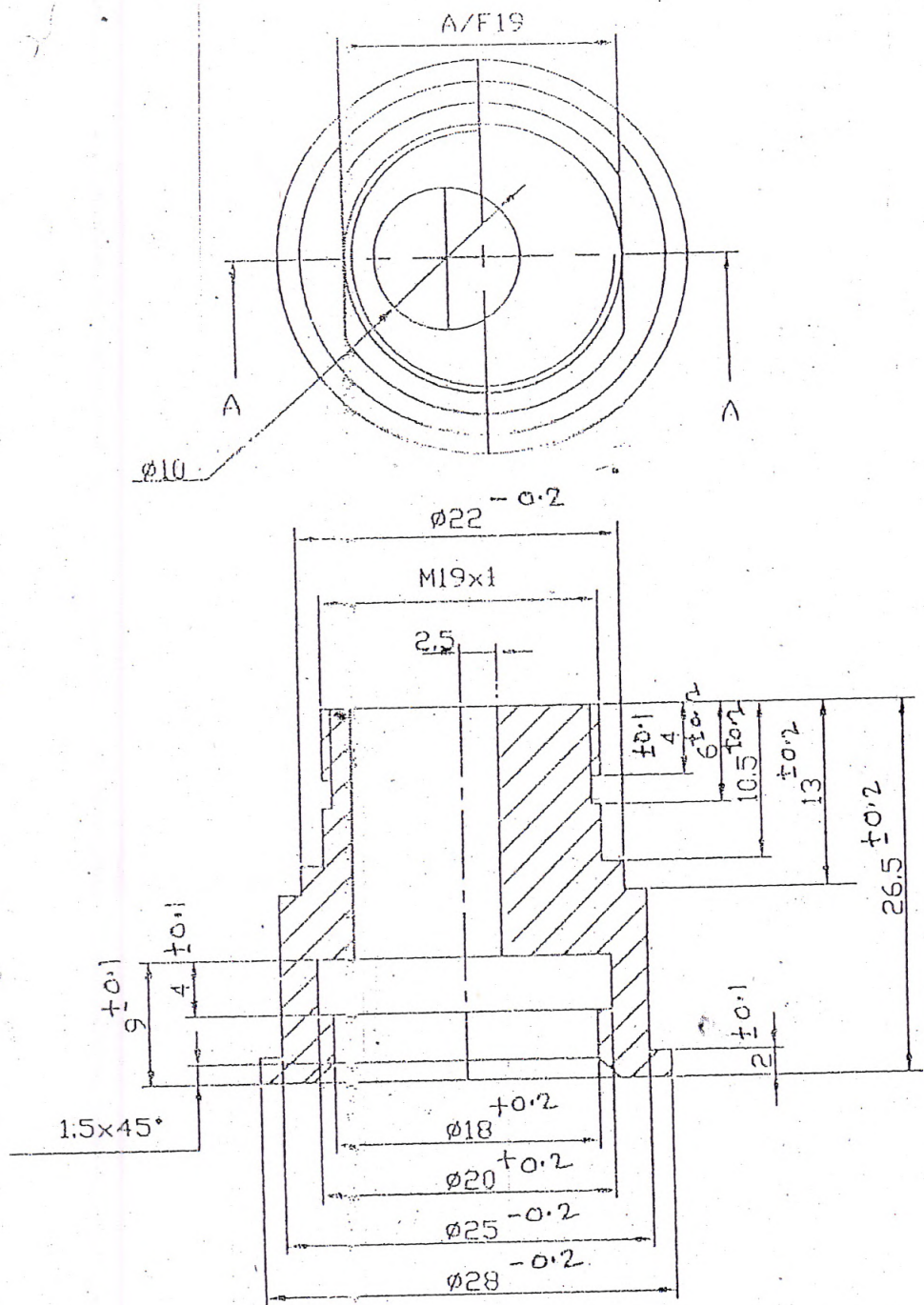
FIRING PIN

MATL:- STEEL

MATL SPECN:- BS: 970 En-24

NAVAL ARMAMENT INSPECTORATE JABALPUR	
SCALE: 1-2:1	SKETCH No.:- 220/3/3
DRN:- <i>[Signature]</i>	DIMENSIONS ARE IN mm
DATE 15-9-03	MATL:- SEE DRG.

APPROVED- *[Signature]*



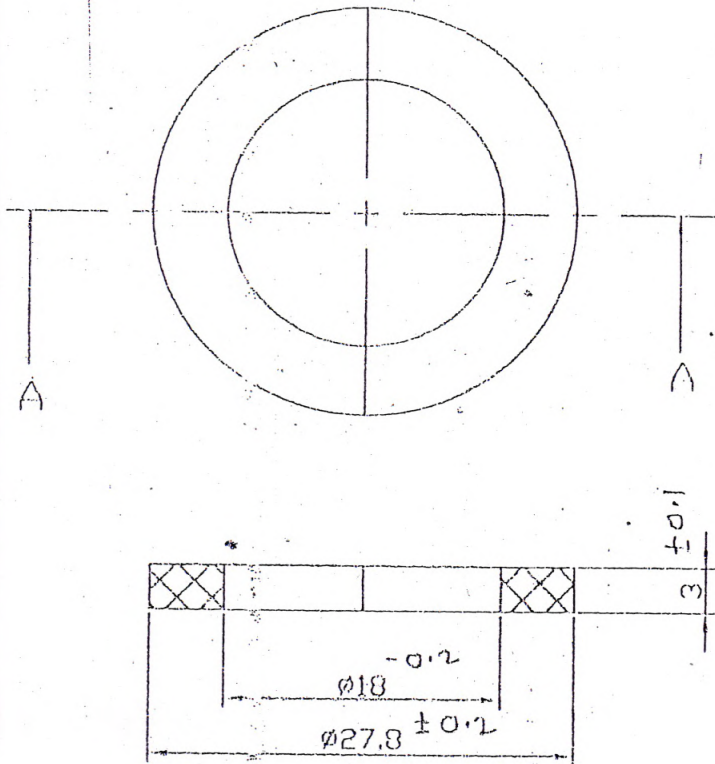
SECTION 'A-A'

HOLDER

MATL:- STEEL
 MATL. SPECN:- BS: 970
 En- 24

NAVAL ARMAMENT INSPECTORATE JABALPUR	
SCALE 1:20	SKETCH No.- 220/3/4
DRN - <i>[Signature]</i>	DIMENSIONS ARE IN mm
DATE 12-7-03	MATL:- SEE DRG.

APPROVED - *[Signature]*



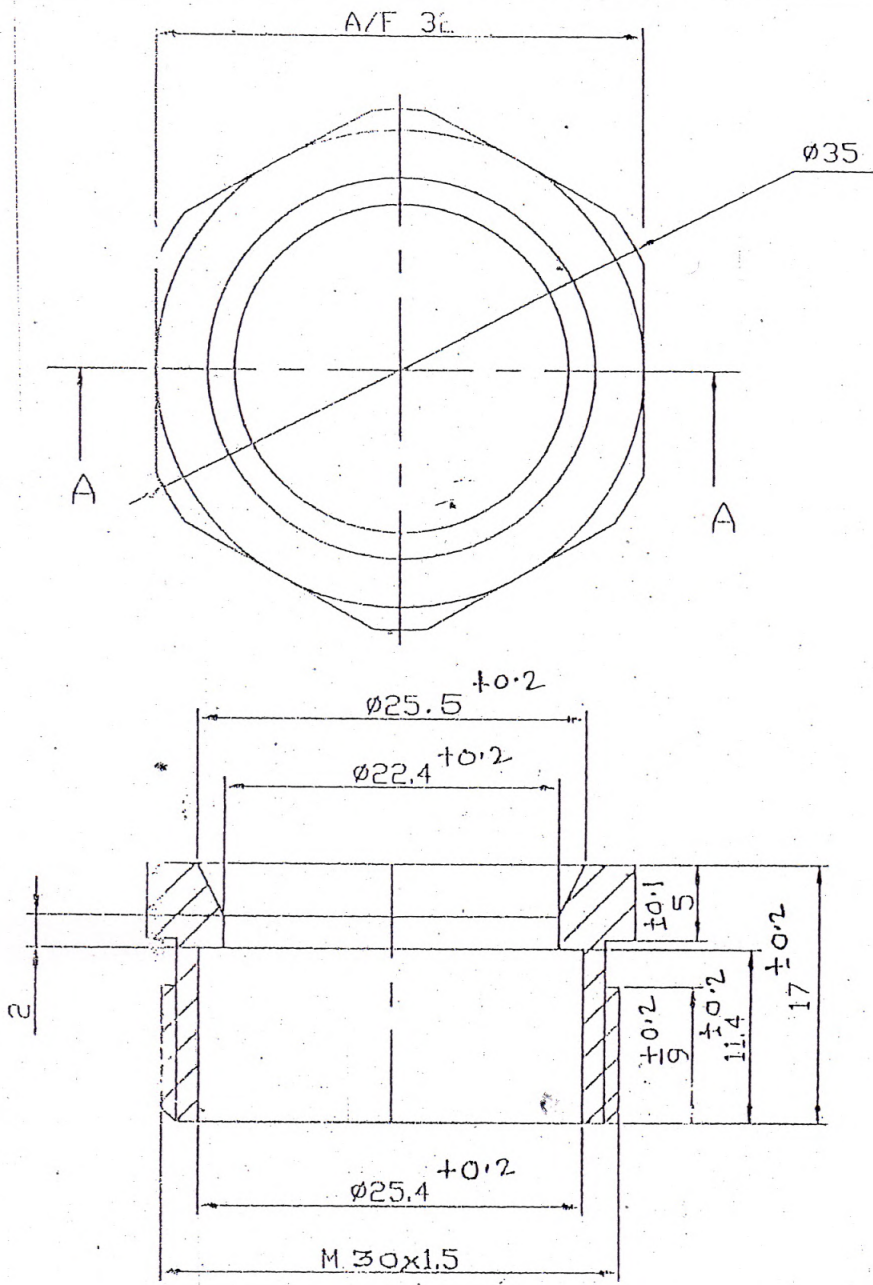
SECTION 'A-A'

WASHER

L SPEC - IND/ME/706(P)

NAVAL ARMAMENT INSPECTORATE JABALPUR	
SCALE 1-2:1	SKETCH No. 1- 220/4
DRN - <i>[Signature]</i>	DIMENSIONS ARE IN mm
DATE 12-7-03	MATL-HARD BOARD

APPROVED - *[Signature]*



SECTION 'A-A'

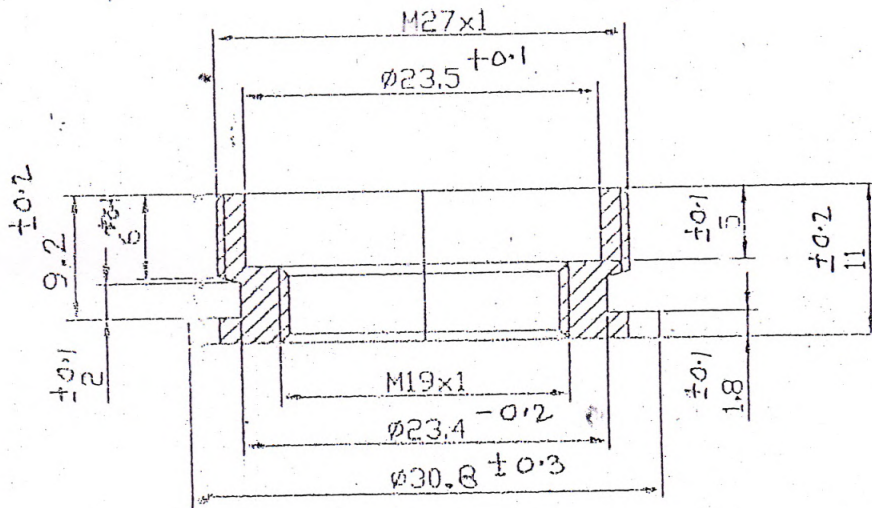
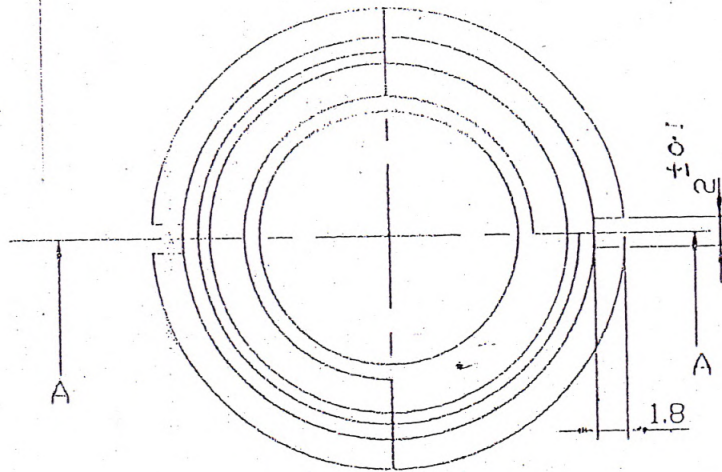
NUT

MATL. :- STEEL

MATL. SPECN. :- BS: 970
En-24

APPROVED - *M. K. J.*

NAVAL ARMAMENT INSPECTORATE JABALPUR	
SCALE 1-21	SKETCH No. - 220/5
DRN - <i>M. K. J.</i>	DIMENSIONS ARE IN mm
DATE 12-7-03	MATL - SEE DRG.



SECTION 'A-A'

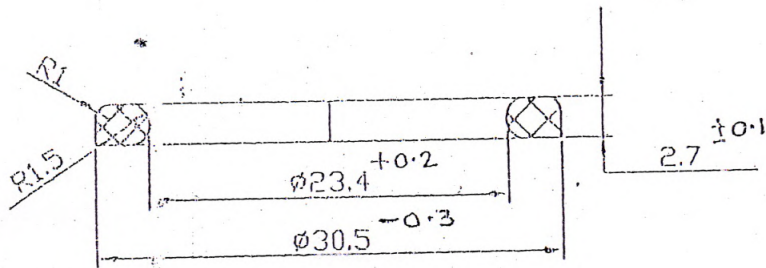
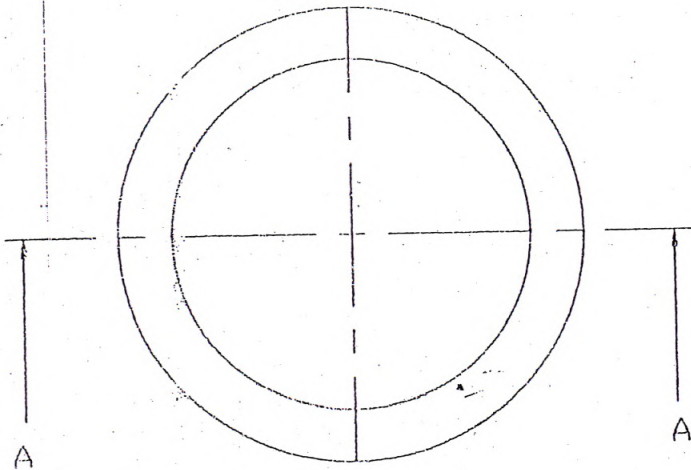
COUPLING

MATL.:- STEEL

MATL. SPECN.:- BS: 970, En-24

NAVAL ARMAMENT INSPECTORATE JABALPUR	
SCALE 1-2:1	SKETCH No.:- 220/6
DRN - <i>[Signature]</i>	DIMENSIONS ARE IN mm
DATE 12-7-03	MATL:- SEE DRG.

APPROVED - *[Signature]*



SECTION 'A-A'

GASKET

MATL SPEC :- BS: 2751-00 BA80.

APPROVED - *[Signature]*

NAVAL ARMAMENT INSPECTORATE JABALPUR	
SCALE 1-2:1	SKETCH No.1- 220/7
DRN - <i>[Signature]</i>	DIMENSIONS ARE IN mm
DATE 12-7-03	MATL.1- NBR