

41976 , 490305001

2

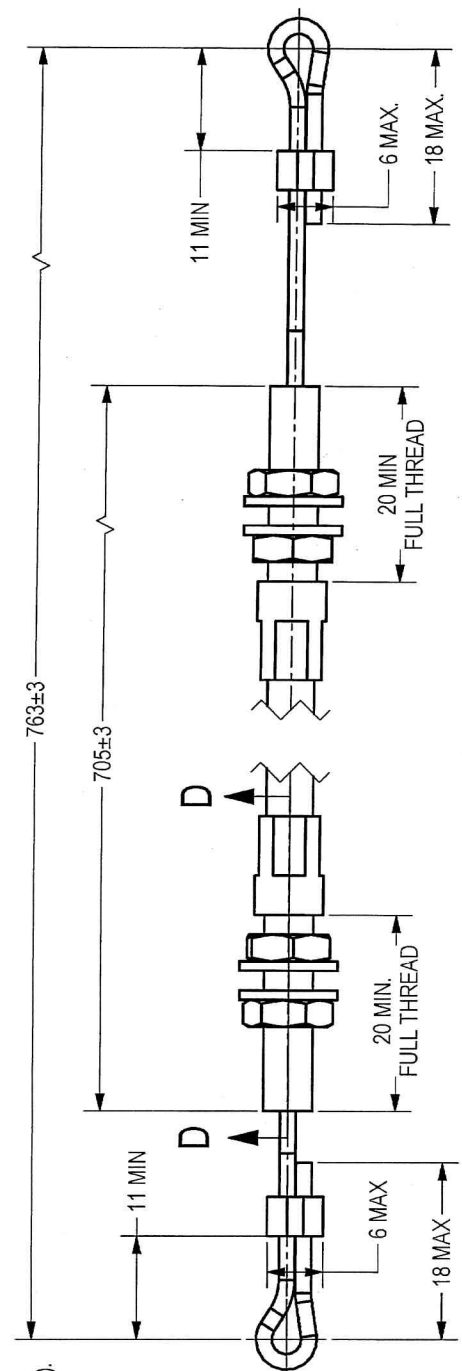
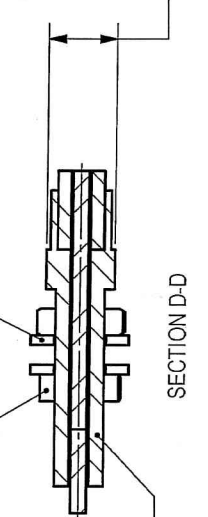
THIS DOCUMENT AND THE INFORMATION CONTAINED IN IT ARE PROPRIETARY AND CONFIDENTIAL TO OFT. NO PERSON OR ENTITY IS ALLOWED TO COPY, REPRINT, REPRODUCE OR PUBLISH ANY PART OF THIS DOCUMENT, NOR DISCLOSE ITS CONTENTS TO OTHERS, NOR MAKE ANY USE OF IT, NOR ALLOW OR ASSIST OTHERS TO MAKE ANY USE OF IT UNLESS BY THE PRIOR WRITTEN EXPRESS AUTHORIZATION OF OFT AND THEN ONLY TO THE EXTENT AUTHORIZED.
COPYRIGHT-OFT.

- NOTES:
- INTERPRET THIS DRAWING IAW ASME Y14.100M.
 - INNER CABLE (PER SUPPLY P/N 300-003.00 - FOR REFERENCE ONLY):
2.1. MATERIAL: STAINLESS STEEL WIRE ROPE AISI 316 ϕ 1.6 MM PER DIN 3055.
2.2. CABLE CONSTRUCTION: 7 * 7.
 - CASING:
3.1 BASE: STEEL GALVANIZED SPIRAL WITH LINER (PER SUPPLIER P/N 305-04700 - FOR REFERENCE ONLY).
3.2 COVERING: PLASTIC ACCORDING TO MIL-DTL-23053 ϕ 5.3MM.
3.3 FUNGUS RESISTANCE PER ASTM G21.
 - MATERIAL OF THE OTHER FASTENERS: COATED STAINLESS STEEL.
5. ASSEMBLY:
5.1. MINIMUM INNER CABLE BREAKING STRENGTH 16 Kg.
5.2. PERMISSIBLE RADIUS WINDING 40 MM.
5.3. TEMPERATURE RANGE: -32°C TO +65°C.
5.4. EFFICIENCY: NOT LESS THAN 0.95 (FOR REFERENCE ONLY).
5.5. DEBURR AND REMOVE SHARP EDGES, APPROX. 0.3X45 Deg.
5.6. PARENTHEICAL FIGURES ARE FOR REFERENCE ONLY.
5.7. PACKAGING AND PACKING:
5.8. THE FINISHED PART SHALL BE PRESERVED AND PACKAGED IN ACCORDANCE WITH MANUFACTURER'S COMMERCIAL PRACTICE.
 - IDENTIFY PER MIL-STD-130 PARA 4.1.B BY LABELING ITS CONTAINER WITH THE PART NUMBER, CHARACTERS 3.2 MM HIGH.
 - APPROVED SOURCE OF SUPPLY:
CARMEL INDUSTRIES AND PARTS LTD.
HAYEZIKA ST. 28, INDUSTRIAL AREA, ASHDOD, ISRAEL.
TEL. 08-8566792.
VENDOR NO. 11266.

DWG NO 064231A-00
SHEET REV RECORD
ALL SHEETS ARE THE SAME REVISION

REV	ECO	DESCRIPTION	DATE	AP/VD
01		Freeze	21-Jan-13	
02		Restricted	01-Apr-14	L. Goldshtein
03	VY265/00	Restricted	05-Nov-15	D. Navre
...	T00004	Identical To Previous	09-Apr-18	L. Goldshtein

4X NUT M5 DIN439
4X FLAT WASHER 5.3 DIN 125
2X THREAD M5 ϕ 7 MAX.



SOURCE CONTROL DRAWING

ORDNANCE FACTORY TIRUCHIRAPPALLI		FOR: PEDESTAL ASSY OF: 12.7MM SRGC	
TITLE CABLE RELEASE, DRIVE 1		DWG NO 064231A-00	
CAGE CODE B 2291A		SCALE 2:1	
SIGNATURE <i>[Signature]</i>		DATE 18/02/18	
DRAWN HOS/DDO		CHECKED OFFICER/PRODN	
UNLESS OTHERWISE SPECIFIED DIMENSIONS ARE IN MM PER ASME Y14.5M-1994		SURFACE TEXTURE IN Micro M \sqrt{Ra}	
TOLERANCES LINEAR ± 0.2 ANGULAR $\pm 0.5^\circ$		3rd ANGLE PROJECTION	
PROJECT OFFICER <i>[Signature]</i>		PLM Control	

2

1

SHEET 1 OF 1