

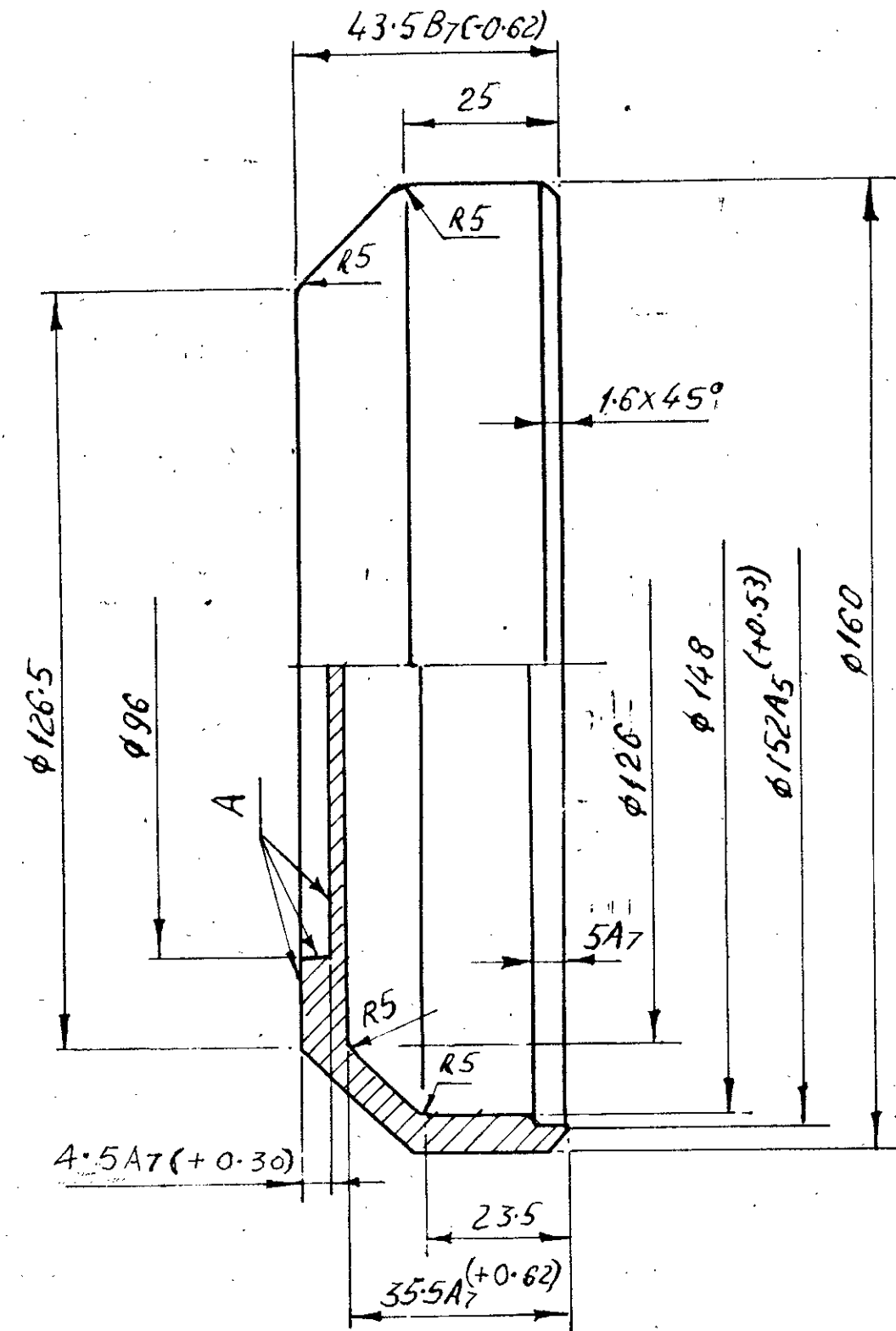
011



907920-4

Sheet No. 16

Rz80/✓(✓)



1. PERMITTED STEEL 10,35, 45 GOST 1050-74
2. IT IS PERMITTED TO MANUFACTURE CASTINGS FROM STEELS 20Л, 30Л, 35Л, 40Л, GOST 977-75.

BLISTERS OF SLAG, WASTE OR GAS ORIGIN WITH THE DIAMETER NOT MORE THAN 4 mm AND DEPTH UPTO 1.0 mm ARE PERMITTED ON THE OUTER SURFACE:

IT IS PERMITTED ON THE INNER SURFACE:

- a) WITH THE DIMETER UPTO 5 mm AND DEPTH UPTO 1 mm.
- b) INFLUXES OF METAL WITHOUT SHARP EDGES OF THE HEIGHT NOT MORE THAN 1 mm, DIAMETER NOT MORE THAN 15 mm AND QUANTITY NOT MORE THAN 3 PIECES WHICH OCCURING DUE TO MECHANICAL DAMAGES OF BAR (ROD).

BLISTERS DIAMETER UPTO 5 mm AND THE DEPTH UPTO 1 mm INFLUXES OF METAL WITHOUT SHARP EDGES OF THE HEIGHT NOT MORE THAN 2 mm AND THE DIAMETER NOT MORE THAN 15 mm AND QUANTITY IS NOT MORE THAN 4 PIECES ARE PERMITTED ON SURFACE 'A'.

3. FOR THE REMAINING TECHNICAL REQUIREMENTS ARE AS PER OST B-84-485-71 AND Ty ΓAy 04989-57.

4. CHEMICAL OXIDIZING COATING IS PERMITTED. OFF 132-08 GOST 18375-73. REQUIREMENTS FOR COATING ARE AS PER GOST 9301-78.

APPD.: <i>[Signature]</i>		4-026706	4ny/05
FOR C.I.(A)		011	
AHSP.: C.I.(A) KIRKEE		COVER	Scale 1:1
		STEEL GOST 1050-74	
		Sheet No. 16	

R. NO.	DATE	AUTHORITY	REVISION.	ZONE	AHSP.	D. 6	SIG.
	28.10.85	33853-A	DRG. SEALED PROV.				