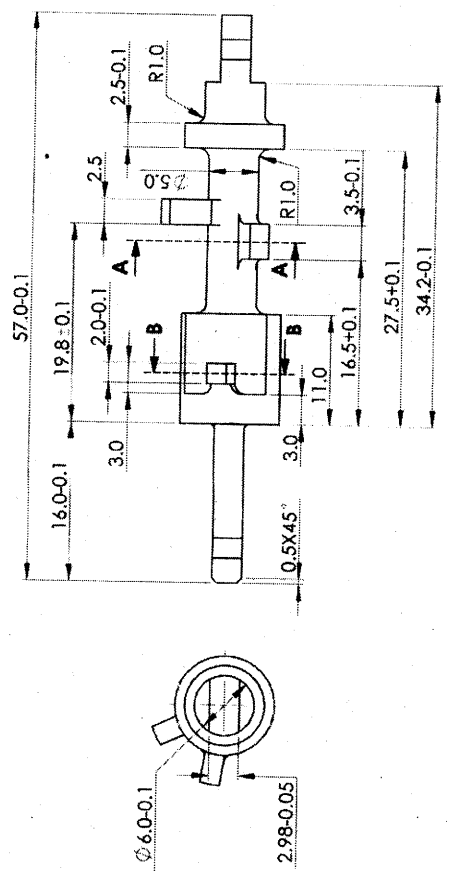
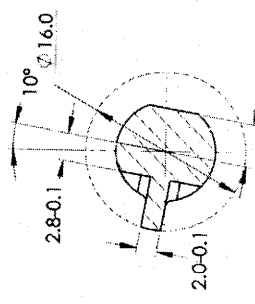
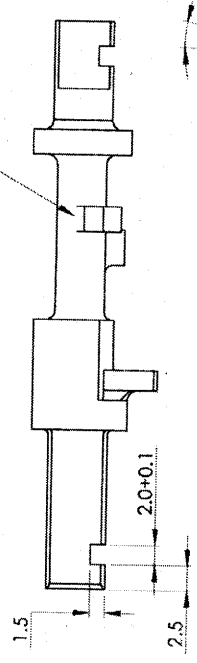


1	2	3	4
SS	VV	SS	CI
100	51	70	4020
100	51	70	4020

DRG. CONVENTIONS CONFIRM TO INDIAN STANDARDS
DIMENSIONS ARE IN mm UNLESS OTHERWISE STATED.



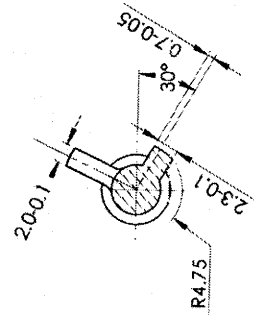
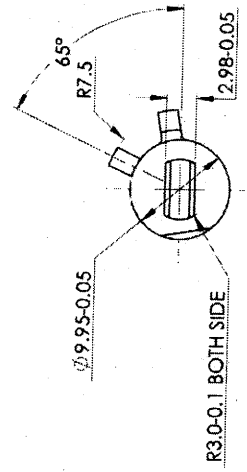
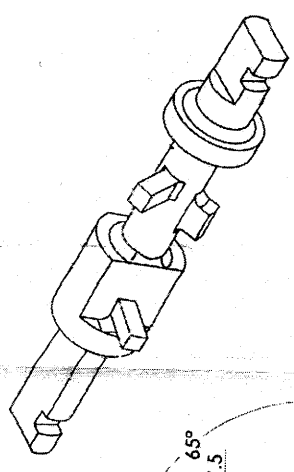
SEE NOTES



SECTION B-B

NOTES:-

- 1) REMOVE ALL SHARP EDGES AND BURRS.
- 2) TOLERANCE FOR ANGLES -30' UNLESS OTHERWISE STATED.
- 3) DIMENSIONS ARE TO BE READ AS APPLIED AFTER PROTECTIVE COATING.
- 4) CASE HARDENED AND TEMPERED TO 500-550 HV WITH CASE DEPTH OF 0.13 ± 0.26.
- 5) IF THE COMPONENT IS TO BE MANUFACTURED THROUGH MIM ROUTE, REFER ARDE SPECN NO: DRD/ARDE/MIM/TSP/051/2019.
- 6) SURFACE FINISH VV UNLESS OTHERWISE SPECIFIED.



SECTION A-A

has/mim
19/01/19

5-1

Sr. No.	DATE	AUTHORITY	BRIEF RECORD	ZONE	CD	GO	SIGN
DRN: ANKIT	DATE: 07/03/2019	MOJ/2019	MATERIAL: STEEL TO IS : 4432-1988 Gd. 13N13C3				
SIGN: <i>[Signature]</i>	CHECKED		PROTECTIVE FINISH: PHOSPHATE D IP TECH. IS:3618-1966, CLASS 'B'				
APPD.	DATE: 07/03/2019	DIRECTOR	TITLE: STUD CHANGE LEVER				
SEALED			EST. MASS: 14 gm				
DATE:			SHEET SIZE: A3				
			SCALE: 2:1				
			DESIGN AUTHORITY: ARDE				
			PUNE #11021				
DRG No.	0204	004	02	15	001	500	A
JVPC	IC	35	AA	A	C	SST	
PART No.			DS CAT No.				

1

2

3

4

5

6

7

8