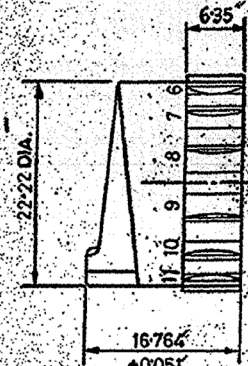
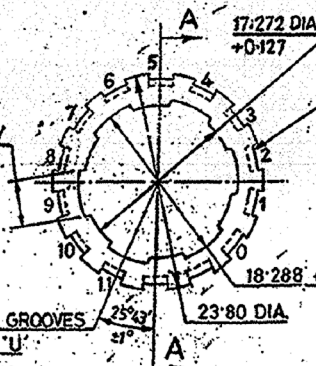


DRG. NO. TEND: 1877

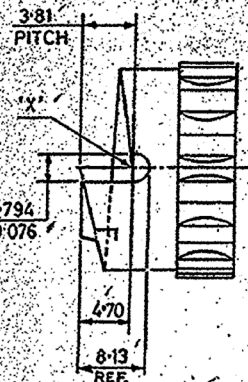


6 GROOVES EQUALLY SPACED 5.08 ±0.25 WIDE

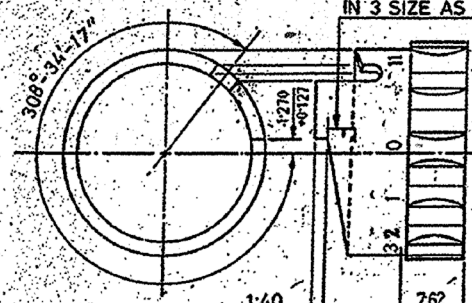
START OF INTERNAL GROOVES WITH RESPECT TO 'U' SLOT R.H. OR L.H.



14 SLOTS IN COMPLETE CIRCLE X 3.18 WIDE SLOTS ARE NUMBERED FROM 0 TO 11 TO BE ENGRAVED 3 HIGH 'U' SLOT AT 'X' LIES ON 12 TH SLOT. SLOTS CORRESPONDING TO 12 & 13 ARE NOT TO BE MARKED.



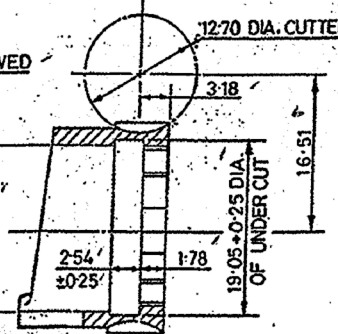
PLAN VIEW CORRESPONDS TO FULLY OPENED POSITION.



PLAN VIEW CORRESPONDS TO FULLY CLOSED POSITION.

LEGEND 'F' TO BE ENGRAVED IN '3' SIZE AS SHOWN.

±0.05
±0.18.2



SECTION 'A-A'

FOR EXPLANATION OF DIMENSIONING ETC SEE D.D NOTE SEET NO.3 (LATEST ISSUE).

FINISH :-

EXTERNAL PORTION :-
PHOSPHATE TO SPECN. JSS-0465-01:1988
CLASS 1, PAINT RFU FINISHING AMMUNITION STOVING BLACK SPRAYING FOR SMALL ARMS TO SPECN. IND/ME/88(PROV).

INTERNAL PORTION :-
CLASS 1, OIL FINISH.

NOTE :-

RELATIVE POSITIONS OF GROOVES AND SLOTS ARE OPTIONAL, AS THERE IS NO FUNCTIONAL RELATION BETWEEN THEM.

FOR SPECN. LATEST ISSUE SHOULD BE FOLLOWED.

MATERIAL: STEEL BS970 Pt.1 1983, GRADE 709 M 40 CONDITION 'T'

MATL:- IS: 5517-1993 DESGN. 42 Cr 4 Mo2 LRS 63mm

ICR.1247

DIMENSIONS ARE IN mm.

Jt. GM/RNM

AMT.No. DA.No. 003/15 Dt. 19.08.15

DA.No. 8981/02/10 Dt. 14.07.10	DA.No. 8981/03A/24-7-69	DA.No. 8981/15A/06/RA/18-10-06
DA.No. 8981/03A/24-7-69	DA.No. 8981/15A/06/RA/18-10-06	DA.No. 8981/15A/06/RA/18-10-06

TRACED	SIGNATURE & DATE
DRAWN	
CHECKED	
OFF/DDS	
OFFICER/PRODN	
OFFICER/DEDO	
APPROVED ON 16/09/2006	

SUB: REGULATOR GAS
FOR: RIFLE 7.62mm 1A1
ASSY DS. CAT. No. 1005-001507
DES. REF. No. ARDE 657/242
DRG. No: TEND 1877*4

ORDNANCE FACTORY TIRUCHIRAPPALLI-16.

SCALE
STORE DRG. No ICR 1247
OPERATION No.
SHEETS: 1
SHEET No. 1

02.07.15 26766-SA MATL. CHANGED

Jt. GM/RNM INSTRUCTIONS. PREPARED. 19.435 was 18-440

Mat. Pt. 1 on 13/11/10