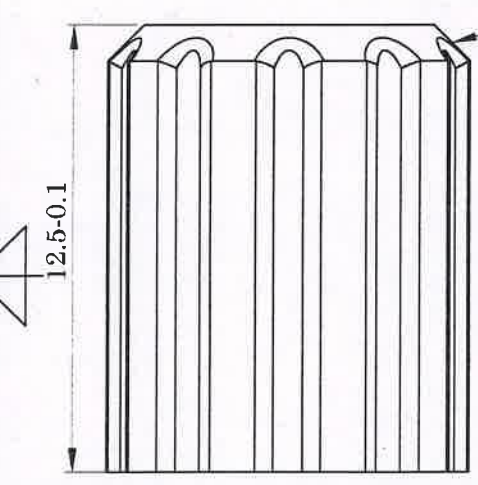
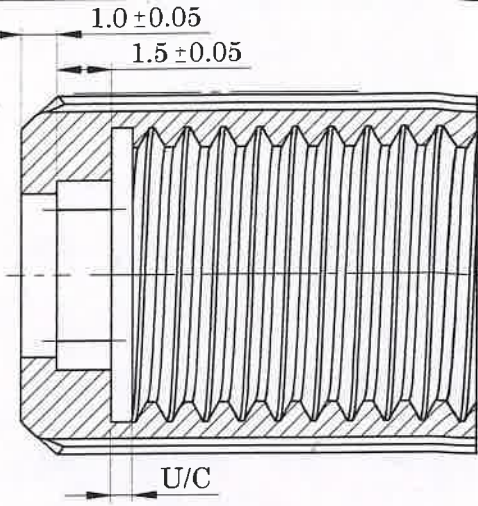
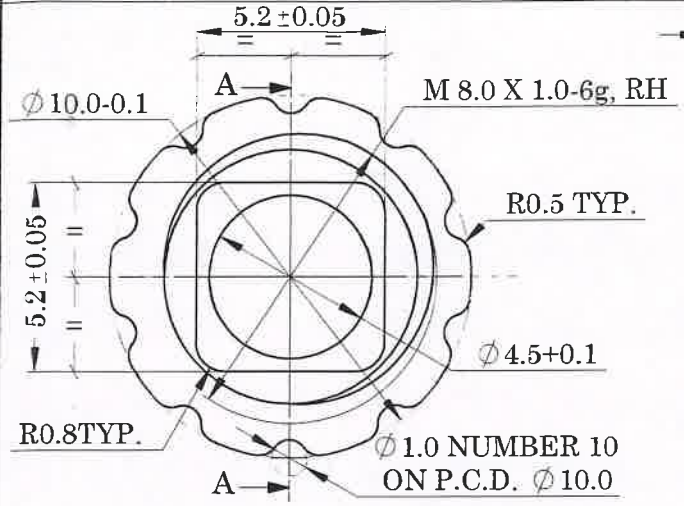
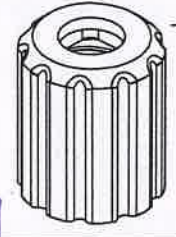


1	2	3	4
LSS	C	V	VV
V	D	0	0
2	2	0	0
9	0	1	0
2	0	1	0
1	0	1	0
1	0	1	2

GENERAL TOL. : FINE / MEDIUM / COARSE DRG. CONVENTIONS CONFIRM TO INDIAN STANDARDS CLASS TO IS: 2102 DIMENSIONS ARE IN mm UNLESS OTHERWISE STATED.



- NOTE:
- 1.REMOVE ALL SHARP EDGES AND BURRS.
  - 2.DIMENSIONS ARE TO BE READ AFTER APPLYING PROTECTIVE FINISH.
  - 3.HARDNESS BEFORE COATING: 300 TO 350 HV.
  - 4.HEAT TREATMENT:- FERRITIC NITRO CARBURIZING AS PER SAE SPECIFICATION No. AMS 2753C  
COATING HARDNESS : 600±100 HV.  
COATING THICKNESS: 15 µm Min.
  - 5.SURFACE FINISH ∇ ALL OVER UNLESS OTHERWISE SPECIFIED.



CONTROLLED COPY 01

Sr. No.	DATE	AUTHORITY	BRIEF RECORD	ZONE	CD	GO
					SIGN	

DRN: SOURABH SIGN: *Sourabh* MATERIAL: STEEL TO IS:5517-1993,Gd.40Ni6Cr4Mo3(EN-24)  
DATE:24/08/2022 CHECKED

APPD. *[Signature]* PROTECTIVE FINISH: SEE NOTE  
DATE: 24/08/2022 FOR DIRECTOR

SEALED DATE: SHEET SIZE: A4 EST. MASS 3.25 gm TITLE: CAP HOUSING FORE SIGHT  
SCALE: 1:1 DESIGN AUTHORITY ARDE PUNE 411021

DRG No.	2	1	0	1	0	1	0	2	0	1	0	5	0	2	2	0	0	D	A
	IC		SS		S		AA		A		C		SST						
9 mm	PART No.				DS CAT No.				AHSP										