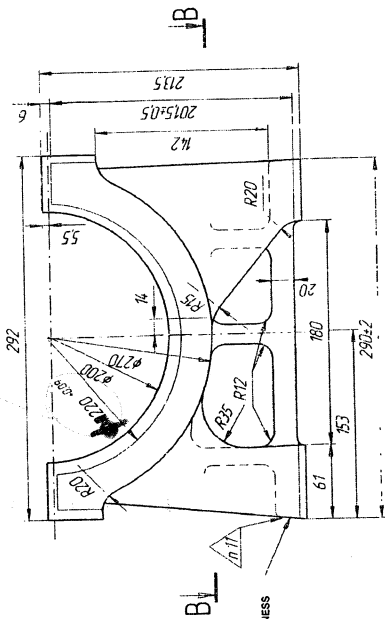
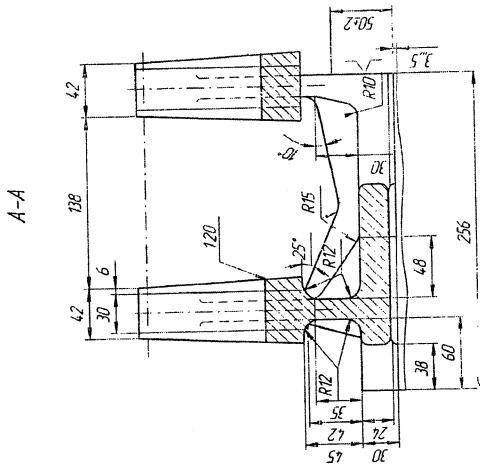
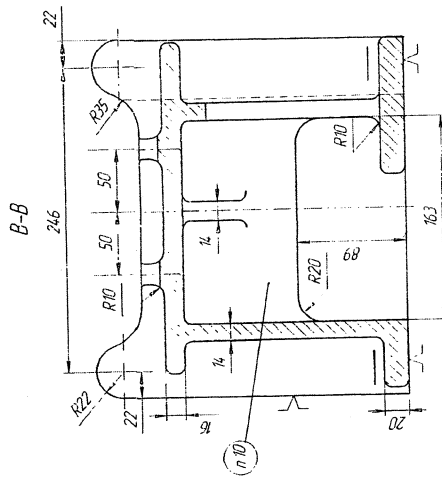


172-01-735

1. B.H.207 TO 285.
2. REQUIREMENTS FOR CASTING ARE AS PER 17ZT 4.
3. CASTING 2ND GROUP AS PER GOST 977-88.
4. CASTING ACCURACY 11M.0-0.9 GOST 26845-85.
5. DRAFT AT BASE 1:5 AT OTHER PLACES NOT MORE THAN 1:20.
6. UNSPECIFIED DIMENSIONS OF CASTING RADII SHOULD NOT EXCEED 6 MM.
7. BASE SURFACES ARE TO BE CLEANED.
8. OTHER REQUIREMENTS ARE AS PER 520T 1.
9. REMAINDERS OF RISER 3 TO 5 MM
10. MARK THE CONVENTIONAL NUMBER OF MELTING THE LAST TWO DIGITS OF YEAR WITH TYPE 10-18 GOST 2930-82 CONVEXLY OR CONCAVELY



AREA FOR TESTING HARDNESS



APPROVED
 Technical Officer (CA) M. V. V. V.
 TECH. CELL

T 90	
MATERIAL	CASTING WT
32008 GOST 977-88	28 BKG
ALT. MATERIAL	EDM
	SCALE
	1:2
DRAWN	CHECKED
	APPROVED
DRAWING NO. 172-01-735/C	
NOMENCLATURE BRACKET	
HEAVY VEHICLES FACTORY	
AVDI. GIBERNAL	