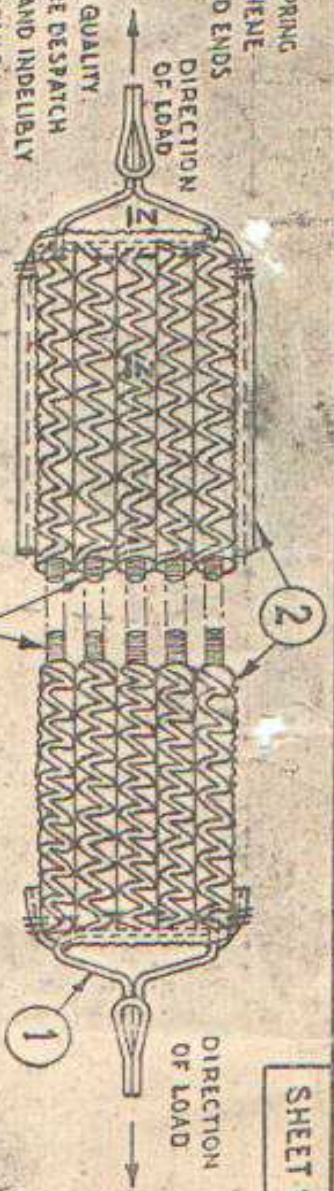


KING:-EACH PACK OPENING SPRING

ELASTIC SHALL BE KEPT IN A POLYTHENE SLEEVE OF APPROVED QUALITY AND ENDS HEAT SEALED, 100 SUCH PACKED ELASTICS OF ONE SIZE SHALL BE KEPT IN CARDBOARD CARTON OF SUITABLE SIZE AND OF APPROVED QUALITY PROPERLY PACKED AND SEALED BEFORE DESPATCH EACH CARTON SHALL BE LEGIBLY AND INDELEBLY MARKED WITH THE FOLLOWING DETAILS:-
 (i) NOMENCLATURE AND CAT. No. OF THE STORE.
 (ii) QUANTITY PACKED IN EACH CARTON.
 (iii) SERIAL No. AND TOTAL No. OF CARTONS IN A CONSIGNMENT.
 (iv) YEAR OF MANUFACTURE OF STORE.
 (v) MASS OF CARTON IN KGS.
 (vi) NAME AND ADDRESS OF THE CONSIGNEE AND CONSIGNOR (vii) INSPECTION NOTE No. AND DATE.

NOTE:- SPECN./DRG. No. MENTIONED IN THE LIST OF MATERIALS UNDER THE COLUMN SPECN./DRG. No. SHALL BE TAKEN AS A REFERENCE TO THE LATEST ISSUE OF THAT SPECN./DRG. No.



HAND STITCHED WITH MATERIAL 'b' TO KEEP SPRINGS IN POSITION.



SECTION-ZZ
SCALE-2:1

ASSEMBLY

STRETCH TEST:- LOAD REQUIRED FOR 80% ELONGATION SHOULD BE 5% (7-68.5N (3.4-7 Kg)) WORKING TOLERANCES ON DIMENSIONS EXCEPT WHERE OTHERWISE SPECIFIED:-
 LESS THAN 50mm = ± 2mm.
 51mm UP TO 250mm = ± 3 to 4mm.
 251mm UP TO 750mm = ± 5 to 6mm.
 751mm UP TO 1520mm = ± 10mm.

LIST OF MATERIALS / COMPONENTS.

SRL.	NOMENCLATURE	No. OF COMPS	DETAIL REF.	SPECN./DRG. No.
a.	SHEATH NYLON, FINE CHANNEL	-	2	AS PER PARTICULARS IN DRG.
b.	THREAD SEWING NYLON, HEAVY, O.G.	-	ASSY. 2	IS: 4229-1967
c.	IDENTIFICATION LABEL	-	2	AS PER APPROVED SAMPLE
d.	INK MARKING TEXTILE BLACK.	-	2	IND/SL. SERIES
e.	SPRINGS AND HOOKS (SUB-ASSEMBLY)	1	1	AS PER DRG. DETAIL

DETAIL No.	SHEET No.	NOMENCLATURE	No. OF
1	1	ASSEMBLY (SUB-ASSEMBLY) (PARACHUTE PIR-R)	-
1-A	2	SPRINGS AND HOOKS (SUB-ASSEMBLY)	1
1-B	3	SPRING	5
2	4	HOOK	2
2	5	SLEEVE	1

DETAIL INDEX

COUNTERSIGNED	DATE	NAME
		DGN
		DRN
		CHD
		TRD
		COMP
		AD/DO
		PRO. DEFR.

SCALE:- 1:1 & 2:1

PACK OPENING SPRING ELASTIC (PARACHUTE PIR-R)
 (SPRING ELASTIC, LONG)
 (SPRING ELASTIC, SHORT)

THIRD-ANGLE PROJECTION

APPROVED.

PROV. (b) (u) (s) (d)

DRG. No. ADPDE/78/ (d)

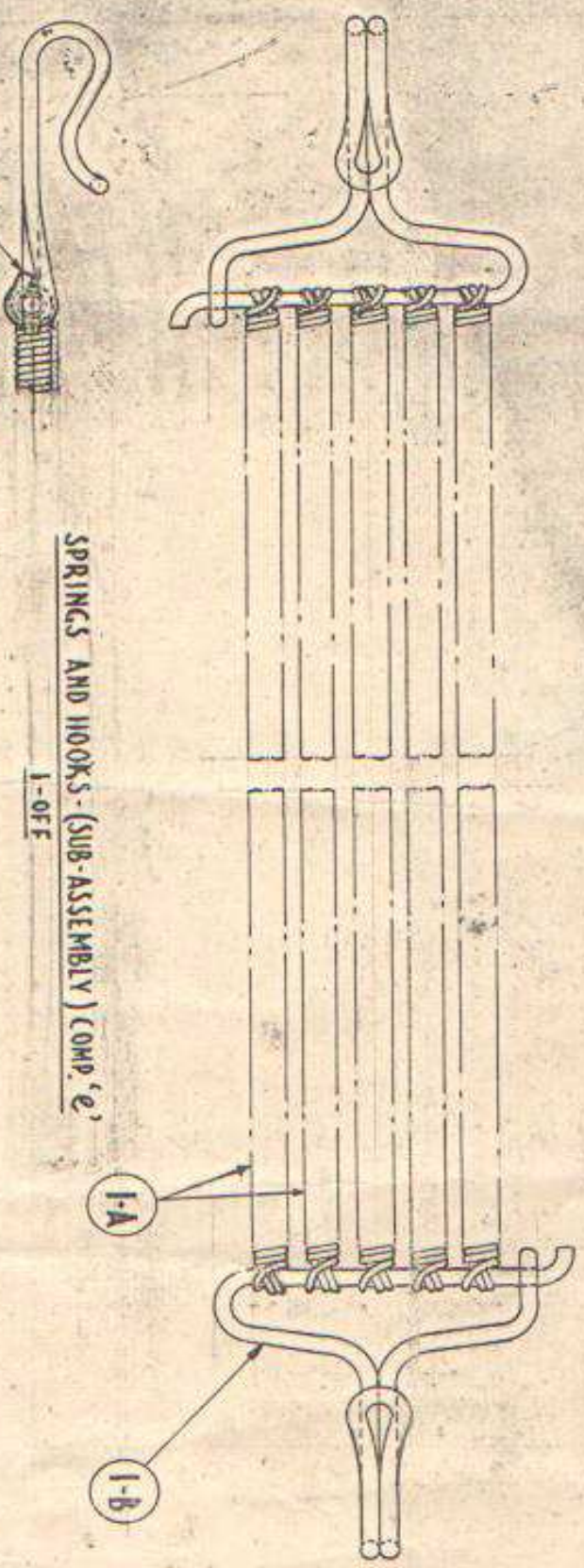
Director,
ADPDE, AGRA

BY DIR.

WORKMANSHIP :- ENDS SHOULD BE SMOOTH & ROUNDED OFF.

SHEET 2 OF 5

1



SPRINGS AND HOOKS - (SUB-ASSEMBLY) COMP. 'e'

ENDS OF HOOK TO BE CLOSED AFTER ASSEMBLING WITH SLEEVE DETAIL-2.

COUNTERSIGNED

DCN	DATE	NAME
DRM		(C. KRISHNA)
CHD	15-1-76	H. S. S.
TRD		(Signature)
COMP	1-1-76	V
AD/DO		(Signature)
PROOF		(Signature)

LT COL.
DIR. DIRECTOR,
ADR DELAGRA.

SCALE: 2:1

PACK OPENING SPRING ELASTIC (PARACHUTE PTR-D)

(SPRING ELASTIC, LONG)
(SPRING ELASTIC, SHORT)

THIRD ANGLE PROJECTION

APPROVED

PROV.
DRG. NO. ADDRDL/781

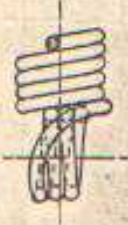
DO/95/77



TABLE OF DIMENSIONS

SIZE	A	No OF
SPRING ELASTIC, LONG	430	5
SPRING ELASTIC, SHORT	290	5

SPRING



NOTE :- MINIMUM ONE ASSEMBLY (ALL 5 SPRINGS SEPARATELY)
OUT OF HUNDRED ASSEMBLIES BE TESTED.

(TEST PIECE LENGTH - 290 mm)

1-A

MATERIAL - HIGH DUTY UNDERGROUND STEEL
SPRING WIRE, SPECN. NO. B.S. 1408-C

FINISH - CADMIUM PLATED AND CHROMATE
PASSIVATED AS PER SPECN. 1572-1968.

EMBRITTEMENT RELEASE - SPRINGS, AFTER
CADMIUM PLATING AND PRIOR TO
CHROMATE PASSIVATION, SHALL BE
MAINTAINED AT A TEMP. OF 150° TO 200°C FOR
HALF AN HOUR. MIN. TO REMOVE HYDROGEN
EMBRITTEMENT.

STRETCH TEST :- WHEN ELONGATED
100% AND KEPT FOR 6 HOURS. THERE
SHOULD BE NO DEFORMATION IN
SPRING TURNS. LOAD SHOULD BE
11.8 TO 14.7 N (1.20 KG TO 1.50 KG).

COUNTERSIGNED

DGN	DATE	NAME
DRN		K. C. SRIVASTAVA
CHD	15-1-76	Ravi S...
TRD		
COMP	1-1-77	
AD/DO		
PRODR		

Director,
ADPRDE, AGRA.

PACK OPENING SPRING ELASTIC (PARACHUTE PTR-R)

(SPRING ELASTIC, LONG)
(SPRING ELASTIC, SHORT)

THIRD-ANGLE PROJECTIO
DIMENSIONS IN MILLIMETRE
APPROVED
DY. DIR.
PROV. (d) 46/70x
DRG. No. ADPRDE/781

SCALE:- 4:1

DO/JS/77

(1-B)

MATERIAL:-

HIGH DUTY UNDERGROUND STEEL SPRING
WIRE SPECN. No. BS: 1408-C

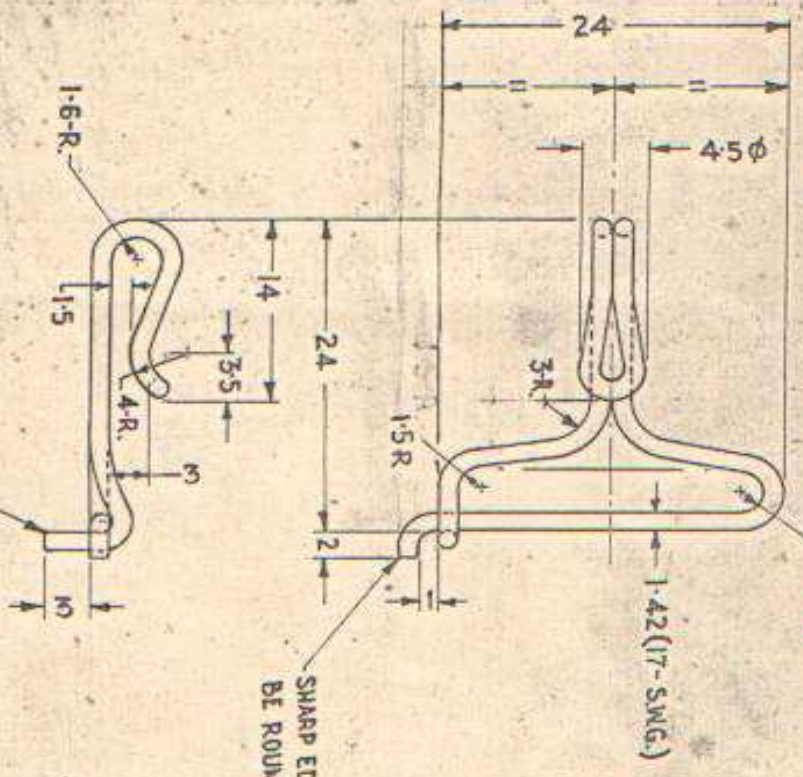
FINISH :- CADMIUM PLATED AND CHROMATE
PASSIVATED AS PER SPECN. 1572-1968.

EMBRTILEMENT RELEASE :- SPRINGS MUST
AFTER CADMIUM PLATING AND PRIOR TO
CHROMATE PASSIVATION, SHALL BE

MAINTAINED AT A TEMP OF 150 TO 200°C FOR
HALF AN HOUR TO REMOVE HYDROGEN EMBRTILEMENT

PROOF LOAD :- 196 N (20 KG).

TOLERANCES :- ± 0.025 mm



SHARP EDGES TO
BE ROUNDED OFF.

HOOK
2-OFF

THIS END TO BE CLOSED AFTER ASSEMBLING. SPRINGS
IN POSITION.

COUNTERSIGNED

R. S. Col.
DIRECTOR,
AD R DE, AGRA

DGN	DATE	NAME
DRN		
CHD (5-1-78)		
TRD		
COMP (1-3-77)		
AD/DO		
PRO/FR		

SCALE :- 2:1

PACK OPENING SPRING ELASTIC (PARACHUTE PTR-R)

(SPRING ELASTIC, LONG)
(SPRING ELASTIC, SHORT)

THIRD-ANGLE PROJECTION

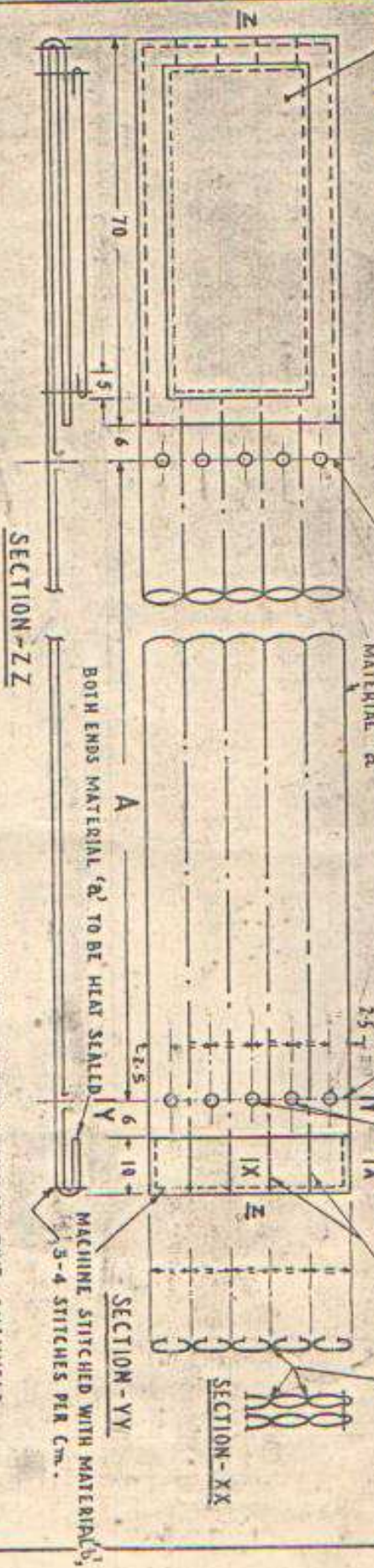
DIMENSIONS IN MILLIMETRES.

APPROVED

R. S. Col.
DY. DIR.

PROV. (A) (1) (1) (2)
DRG. No. ADDRDE/781(d)

IDENTIFICATION LABEL OF MATERIAL 'c' (SIZE: 60 X 25 mm)
 MARKED WITH NOMENCLATURE OF THE STORE, CAT. No., MANUFACTURE
 NAME OR RECOGNISED TRADE MARK, MONTH AND YEAR
 OF THE MANUFACTURE AND INSPECTOR'S STAMP WITH INK
 MATERIAL 'd'



PIERCE 10-HOLES OF 3mm Ø HOLES IN
 UPPER LAYER OF MATERIAL 'a' TO PASS
 SPRINGS (DETAIL-A) AND ENDS OF THE HOLES
 TO BE HEAT SEALED.
 INTER WOVEN

TABLE OF DIMENSIONS

SIZE	A	No. OFF
SPRING ELASTIC, LONG	860	1
SPRING ELASTIC, SHORT	580	1

SLEEVE

PARTICULARS - SHEATH - NYLON - FIVE CHANNELS

TOTAL WIDTH: 39 ± 1 mm.
 THICKNESS: 73 ± 0.2 mm UNDER 1960 MPa (200 bar) COMPRESSURE.
 WIDTH OF EACH CHANNEL: 7 TO 7.5 mm.
 TOTAL NO. OF ENDS: 190
 PICKS PER CM: 18/19
 DENIER OF YARN WARP: 210/2
 DENIER OF YARN WFT: 210/2
 WEIGHT: 1672 Gms / METRES
 WEAVE: TUBULAR PLAIN INTER WOVEN AT FOUR PLACES TO MAKE FIVE CHANNELS
 SHADE: 06
 B. (55 CMS BETWEEN GRIPS) 5450N (350K)

NOTE: FINE YARN SHOULD BE USED

COUNTERSIGNED

DGN: M. H. H. G. / M. H. H. G.
 DDM: M. H. H. G. / M. H. H. G.
 CHD: 15-1-76 / M. H. H. G.
 TRD: M. H. H. G. / M. H. H. G.
 COMP: 1-7-77 / M. H. H. G.
 AD/DO: M. H. H. G. / M. H. H. G.
 PRO/OFIA: M. H. H. G. / M. H. H. G.

off's DIRECTOR LT. COL. DRDE, AGRA

DATE: NAME:

PACK OPENING SPRING ELASTIC (PARACHUTE DTR-R)

(SPRING ELASTIC, LONG)
 (SPRING ELASTIC, SHORT)

THIRD - ANGLE - PROJECTION

DIMENSIONS IN MILLIMETRES

APPROVED: M. H. H. G. / M. H. H. G.
 DY. DIR. LT. COL.

PROV. (d) (19) (1975)
 DRG. No. DRDE/781(b)