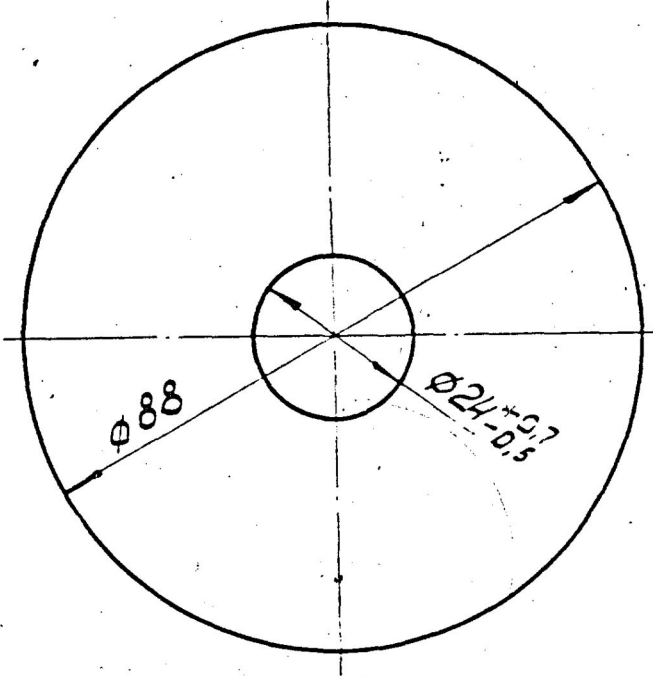
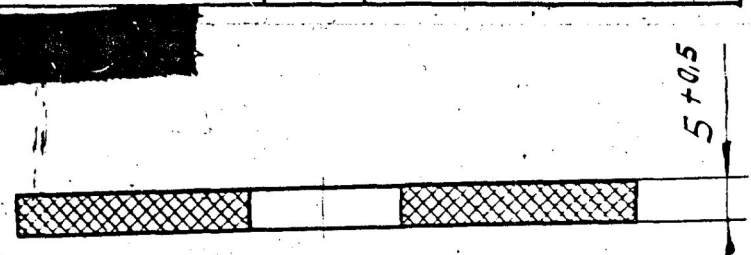


329-25-1

Верно: Нач. бюро, [illegible] [illegible] В.Н.



PILOT SAMPLE SHOULD BE APPROVED BY A.H.S.P BEFORE BULK PRODUCTION

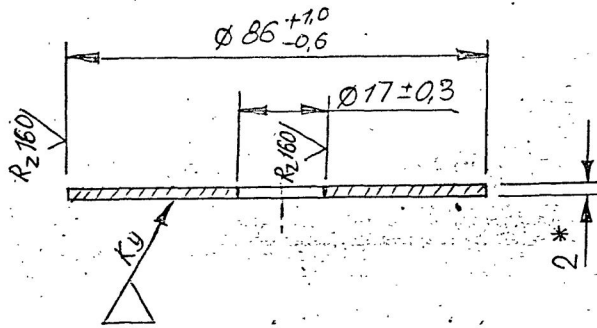
1. VOLUME MASS IS  $0.38 \pm 0.01$  g/cm<sup>3</sup>.  
 RING NPT 88-24-5 GOST 288-72 IS ALLOWED  
 VOLUME MASS IS  $0.38 \pm 0.01$  g/cm<sup>3</sup>.  
 MAKE THE PART acc TO GOST 15159-76 FOR THE TROPICS.

\* КОЛБЦО  
 CT88-24-5 GOST 288-72

			EST. MASS -- TO BE STAMPED OR MARKED WHERE 0.011KG INDICATED THIS * (LETTERS)
			ALL SHARP EDGES AND CORNERS TO BE REMOVED UNLESS OTHERWISE STATED MACHINED CORNERS TO HAVE R OUTSIDE R INSIDE EQUIVALENT CHAMFERS ARE PERMISSIBLE.
ISSUE DATE	NATURE OF AMENDMENTS	MATERIAL :- * SEE ABOVE	USED ON :- C6 329-05
CHD [signature]	SCALE - 1 : 1.	CONTROLLERATE OF INSPECTION (HEAVY VEHICLES) AVADI	
TCD [signature]	DIMENSIONS IN mm.	TITLE :- RING	
APPO [signature]	TOLERANCE ON DIMNS UNLESS OTHERWISE STATED	D S CAT NUMBER	
DATE 23.9.86	ALL THREADS CONFORM TO	DRAWING NUMBER 329-25-1	



DRAWING NUMBER  
329-36-3A



1. ALTERNATE MATERIAL IS SHEET 1.5 GOST 19904-74  
12X13 GOST 5582-75  
AND ALLOYS 163, GOST 931-78, A16ATH, A16AM, GOST  
21631-76 AND A16YM TY-1-4, -23-72.
2. IT IS ALLOWED TO APPLY STAMP ON THE TAG (PART  
540-551) FOR BATCH OF PARTS AND SEAL.
3. \* DIMENSION IS GIVEN FOR REFERENCE.

EXPLANATORY NOTE :-

MATERIAL QUOTED:- SHEET A16AT-2 GOST 21631-76

A16 = GRADE OF ALUMINIUM ALLOY:

A = CLADDED; T = HARDENED AND NATURALLY AGED.

2 = THICKNESS.

CHEMICAL COMPOSITION:- %

A D M I X T U R E S									
AL	IRON	Si	Cu	Mn	Zn	Ti	Mg	OTHER ADMIXTURES EACH SEPARATELY	TOTAL
MAXIMUM									
99.30 (MIN)	0.30	0.30	0.02	0.025	0.10	0.15	0.05	0.02	0.70

MECHANICAL PROPERTIES:-

TENSILE STRENGTH  $\text{Kg/mm}^2 = 15.0-23.0$

% ELONGATION = 10

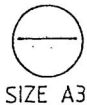
\*\*  
Cb 329-05-1  
A Cb 329-05-1  
Cb 329-05

PILOT SAMPLE SHOULD BE APPROVED BY A H S P BEFORE BULK PRODUCTION

EST. WT. 0.031 kg TO BE STAMPED OR MARKED WHERE INDICATED: THUS # ( LETTERS)

ALL SHARP EDGES AND CORNERS TO BE REMOVED UNLESS OTHERWISE STATED MACHINED CORNERS TO HAVE R OUT SIDE INSIDE EQUIVALENT CHAMFERS ARE PERMISSIBLE.

DRN	<i>An. Gaudin</i>	MATERIAL:- SHEET A16AT	USED ON
CHD	<i>4/1/80</i>	-2 GOST 21631-76	** SEE ABOVE
TCD	<i>Jana.</i>		
APPD	<i>[Signature]</i>	CONTROLLER OF QUALITY ASSURANCE (HEAVY VEHICLES)	
DATE	22-12-89	AVADI	
SCALE:-	1:1		
DIMENSIONS IN mm		TITLE	
TOLERANCE ON DIMNS UNLESS OTHERWISE STATED IS: 2102-69		PRESSURE PLATE	
ALL THREADS TO CONFORM TO		D S CAT NUMBER	DRAWING NUMBER
A	27.10.97 AUTHY LT No. 90215/AHSP/ED/AL dt 17.10.97		329-36-3A
ISSUE	DATE	NATURE OF AMENDMENTS	

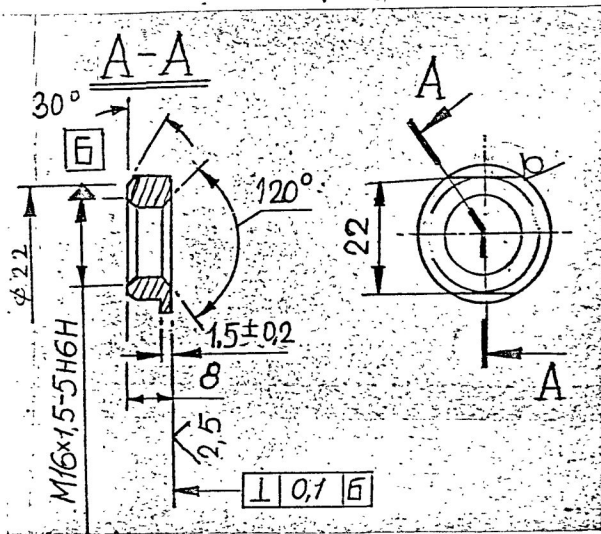


SIZE A3



DRAWING NUMBER

329-38-1



1. UNSPECIFIED LIMIT DEVIATIONS ARE AS FOLLOWS :-

FOR HOLES - AS PER A7.  
FOR SHAFTS - AS PER B7.  
FOR OTHERS - AS PER C7.

2. COATING : ZINC PLATED, 9 MICRONS THICK OILED WITH DEHYDROGENATION.  
NO COATING ON THREAD IS PERMITTED.

3. CHECK DIMENSIONS BEFORE APPLYING COATING.

EXPLANATORY NOTE :-

4. MATERIAL COATED : ROUND BAR 25-4 GOST 7417-75  
45-B GOST 1050-74

25 = EXTERNAL DIAMETER , CLASS OF ACCURACY = 4  
6 = GROUP OF SURFACE QUALITY , 45 = GRADE OF STEEL.

a) CHEMICAL COMPOSITION : (AS PER GOST 1050-74)

C = 0.42 - 0.50 , Si = 0.17 - 0.37 , Mn = 0.50 - 0.80

Cr = 0.25  
P = 0.035  
Cu = 0.25  
S = 0.040  
Ni = 0.25 } maximum

b) MECHANICAL PROPERTIES : (AS PER GOST 1050-74)

TENSILE STRENGTH Kgf/mm<sup>2</sup> (min) = 61  
YIELD POINT Kgf/mm<sup>2</sup> (min) = 36  
% ELONGATION (min) = 16  
% REDUCTION IN AREA (min) = 40  
IMPACT STRENGTH Kgf.m/cm<sup>2</sup> = 5 (min)

KVD No: 63522

PILOT SAMPLE SHOULD BE APPROVED BY A H S P BEFORE BULK PRODUCTION

EST. WT. 0.016 Kg TO BE STAMPED OR MARKED WHERE INDICATED THUS # ( LETTERS)

ALL SHARP EDGES AND CORNERS TO BE REMOVED UNLESS OTHERWISE STATED MACHINED CORNERS TO HAVE R OUT SIDE INSIDE EQUIVALENT CHAMFERS ARE PERMISSIBLE.

DRN	APPRO	MATERIAL:-	USED ON
DATE	DATE	ROUND BAR 25-4 GOST 7417-75 45-B GOST 1050-74	cb 329-05-1 (A) cb 329-05
SCALE:-1:1	CONTROLLER	RATE OF QUALITY ASSURANCE (HEAVY VEHICLES) AVADI	
DIMENSIONS IN mm	TITLE	NUT M 16	
TOLERANCE ON DIMMS UNLESS OTHERWISE STATED IS:2102-69	D S CAT NUMBER	DRAWING NUMBER	
ALL THREADS TO CONFORM TO		329-38-1	
ISSUE DATE	NATURE OF AMENDMENTS		



SIZE A3

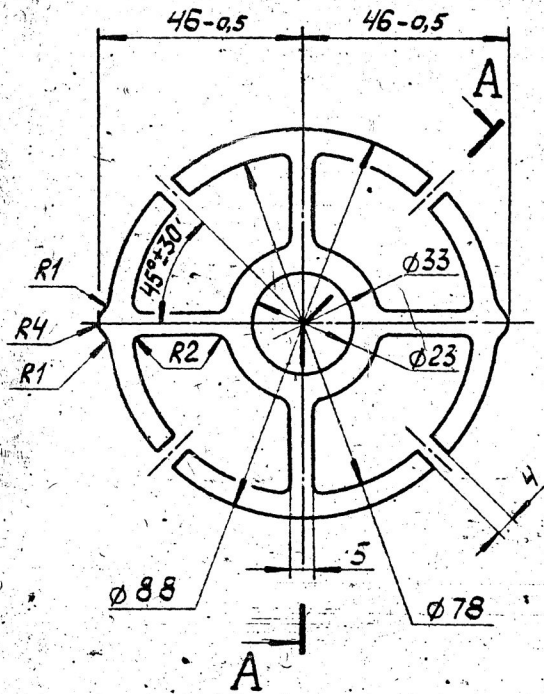




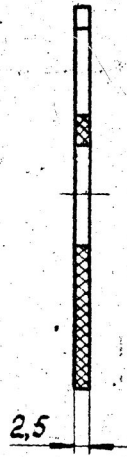


529-37A

U.T.D



A-A



1. ALL DIMENSIONS ARE PROVIDED WITH TOOL.
2. UNSPECIFIED LIMIT DEVIATIONS OF DIMENSIONS ARE AS FOLLOWS :  
FOR HOLES - AS PER A, FOR SHAFTS - AS PER B, OTHERS - AS PER CM.
3. STAMP FINAL ACCEPTANCE AND MARK DATE OF MANUFACTURE OF BATCH OF PARTS ON THE LABEL.
4. OTHER TECHNICAL REQUIREMENTS ARE AS PER OST 4 TO 005.051.
5. IT IS PERMITTED TO USE CAPRONE WASTES (GATES AND REJECTED PARTS) OF UPTO 30 PERCENT.

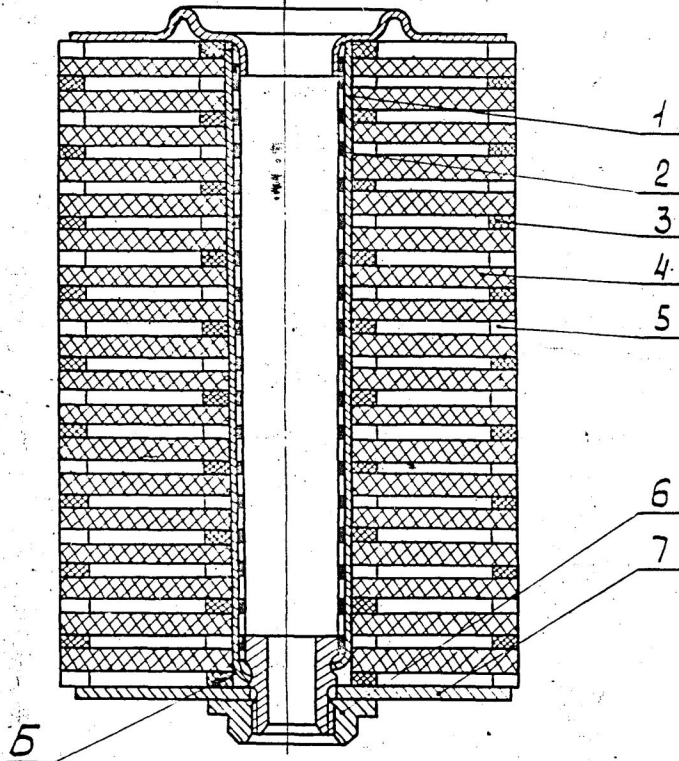
\*\* POLYAMID PA6-21 SECONDARY  
OST 6-06-C4-79

PILOT SAMPLE SHOULD BE APPROVED BY A.H.S.P BEFORE BULK PRODUCTION

EST. MASS	TO BE STAMPED OR MARKED WHERE INDICATED THUS #
0,005 Kg	(LETTERS)
ALL SHARP EDGES AND CORNERS TO BE REMOVED UNLESS OTHERWISE STATED MACHINED CORNERS TO HAVE A OUTSIDE R INSIDE EQUIVALENT CHAMFERS ARE PERMISSIBLE	
AUTHY LT No. 25 90215/AHSP/ED/AL 1/27	MATERIAL: SEE ABOVE
ISSUE DATE: 29/08/79	USED CN: CE 329-05-1A CE 329-05
DRN: [Signature]	CONTROLERATE OF QUALITY ASSURANCE (HEAVY VEHICLES): A V A D I
CHD: [Signature]	TITLE: INLET SPACER
TCD: [Signature]	DRAWING NUMBER: 529.37A
APPD: [Signature]	D S CAT NUMBER
DIMENSIONS IN mm	
TOLERANCE ON DIMNS UNLESS OTHERWISE STATED	
ALL DIMS TO	

1988 1988





1. WASH THOROUGHLY ALL THE PARTS OF FILTERING ELEMENT BEFORE ASSEMBLY. FELT PARTS AND FILTER BAG SHOULD BE WASHED IN FILTERED BENZINE OR KEROSENE.
2. PUT FILTER BAG ON THE GAUZE. TIGHTEN CORD IN GROOVE 5 TILL GROOVE INNER DIAMETER HAVING TIED IT BY SINGLE KNOT.
3. WIND KNOT END 1-2 TIMES ROUND THE GAUZE BY GROOVE, EVERY TIME TIEING THEM BY SINGLE KNOT.
4. ALTERNATION OF INLET AND EXHAUST INSERTIONS AND FELT DISCS SHOULD CORRESPOND TO THE DRAWING AND MOREOVER INLET INSERTION SHOULD BE THE FIRST.
5. PROTRUSIONS ON THE INSERTIONS SHOULD BE IN ONE PLANE.
6. WHEN ASSEMBLING FILTERING ELEMENT, EXTREME INLET INSERTIONS 529-37 A SHOULD ADJOIN TO FELT DISCS BY SIDES HAVING TRACES FROM PRESSMOULD.

PILOT SAMPLE SHOULD BE APPROVED BY  
A H S P BEFORE BULK PRODUCTION.

		EST. MASS 0.470 Kg	TO BE STAMPED OR MARKED WHERE INDICATED THIS Ⓢ LETTERS!
		ALL SHARP EDGES AND CORNERS TO BE REMOVED UNLESS OTHERWISE STATED MACHINED CORNERS TO HAVE R OUTSIDE R INSIDE EQUIVALENT CHAMFERS ARE PERMISSIBLE	
ISSUE DATE	NATURE OF AMENDMENTS	MATERIAL	USED ON:- CS 20-29-00-8
DRN	SCALE - 1:1		
CHK	DIMENSIONS IN mm	CONTROLLERATE OF INSPECTION (HEAVY VEHICLES) AVADI	
TCD	TOLERANCE ON DIMS UNLESS OTHERWISE STATED	TITLE: ASSY FILTERING ELEMENT	
APPO	ALL THREADS CONFORM TO	D S CAT NUMBER SHEET 1 OF 2	DRAWING NUMBER CS 329-05
DATE 23.9.86			





