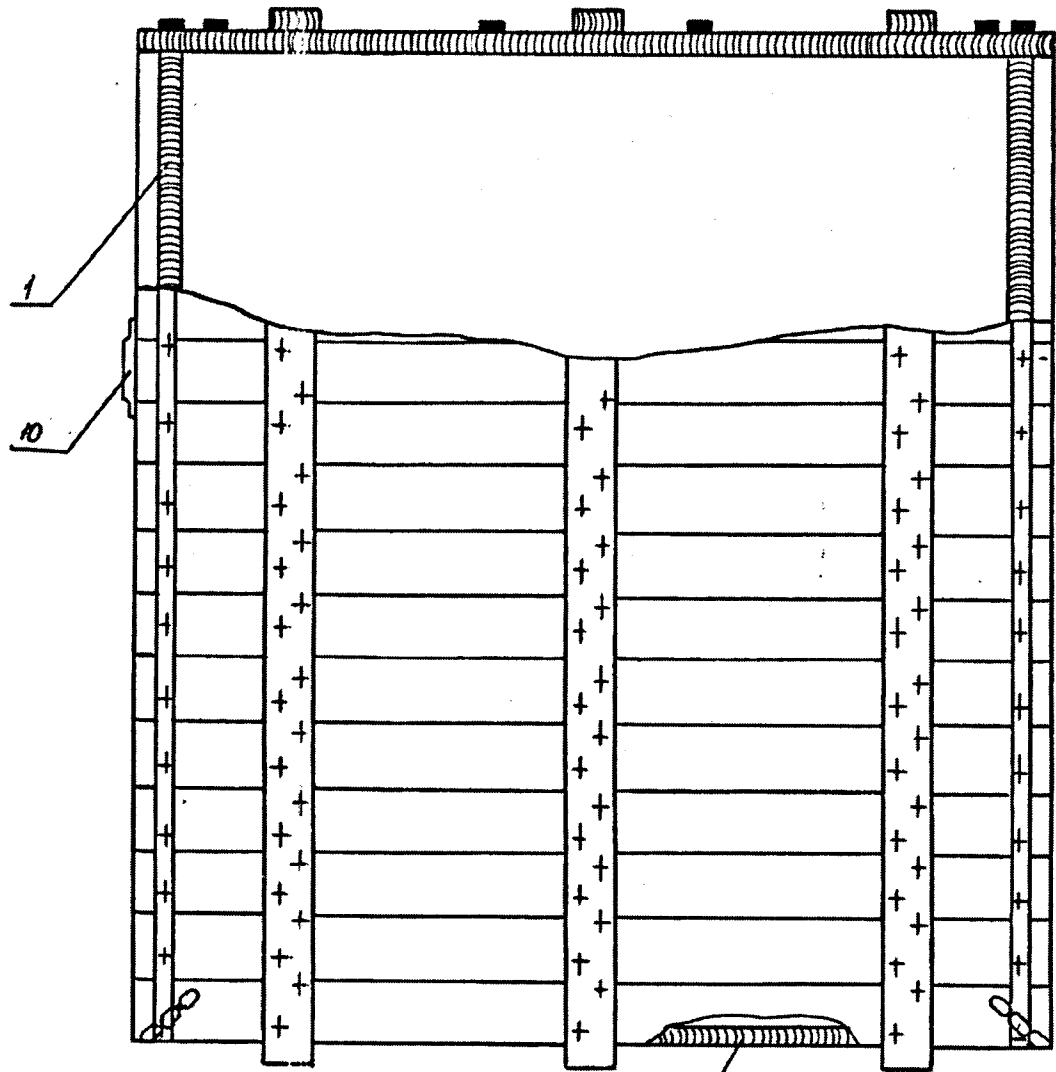


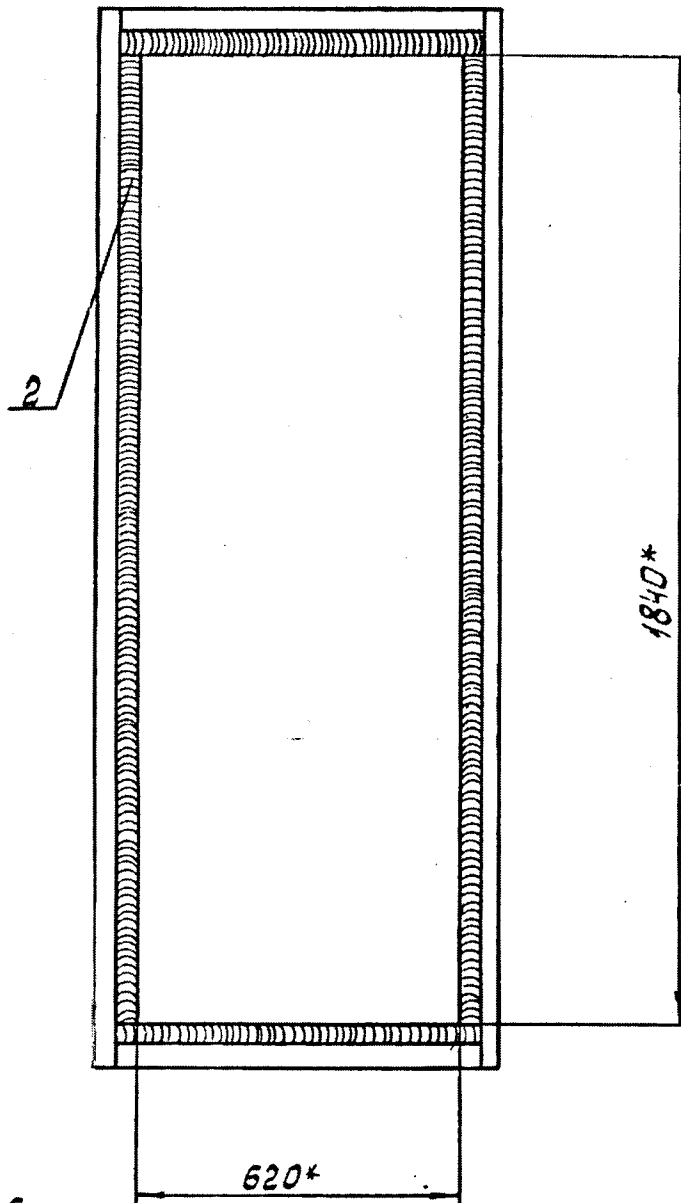
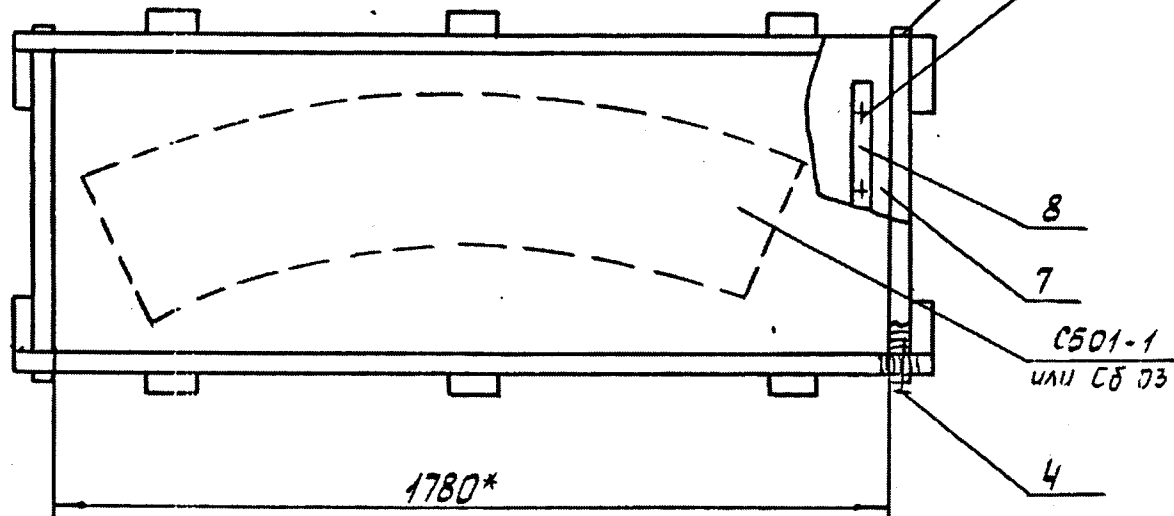
AK-630M-Я СБ 310-1 TRSB

AK-630M-Я СБ 310-1 TRSB



Removable cover

Крышка снята



1. * - Dimensions for reference.

2. Cover the angles of box with steel strip position 6.

3. Cover the internal walls and the bottom of box with roof tracing paper P 350 GOST 2697-83 or by the paper DB GOST 8828-89 by roofing it with thick woolen cloth having dimension of 3.5 to 5.0x25 position 8 and with nails position 5.

1. * Размеры для справок.

2. Углы ящика обить стальной лентой поз. 6.

3. Внутренние стенки и дно ящика обить пергамином кровельным П-350 ГОСТ 2697-83 или бумагой ДБ ГОСТ 8828-89 с креплением ее дранью 3,5÷5,0x25 поз. 8 и гвоздями поз. 5.

6. Манипуляционные знаки № 11 (↑↑) с размерами для ярлыка № 4 по ГОСТ 14192-96.

7. Надписи и знаки выполнять эмалью ПФ-115 черная ГОСТ 6465-76. Шрифт ПО-24 ГОСТ 2930-62 располагать симметрично. Транспортную маркировку нанести краской на передней стенке в соответствии с ГОСТ 14192-96 и договора.

8. Остальные технические условия по ГОСТ В 6454-75.

9. После укупорки ящик опломбировать с использованием проволоки КО 0,5 ГОСТ 792-67 и 4-х пломб 1-6x10-АД1М ГОСТ 18677-73 в местах крепления ленты в замок.

10. Допускается местная непростройка каждой стороны площадью не более 20 %, глубиной до 1 мм и чистотой обработки Rz1200.

11. Маркировать ящик для укупорки сд 01-1 номером 5 МТР для укупорки сд 03 номером 13МТР

6. Manipulated markings No. 11 (↑↑) with dimensions for label No. 4 as per GOST 14192-96.

7. Make the inscriptions and markings with enamel PF-115 black GOST 6465-76. Arrange the font PO-24 GOST 2390-62 symmetrically. Make transportation marking with paint on the front wall in conformity with GOST 14192-96 and in conformity with agreement.

8. Remaining technical requirements as per GOST V 6454-75.

9. After corking, seal the box with wire KO 0.5 GOST 792-67 and 4 seals 1-6x10-AD1M GOST 18677-73 at the places for fastening of strip for lock.

10. Local shaving of each side with area not more than 20 % of the depth up to 1 mm and the finishing of Rz1200 is permitted.

11. Mark the box for corking sb 01-1 with number 5 MTR for corking Sb 03 with number 13 MTR

AK - 630M-Я СБ 310 - 1 TR SB

AK-630M-Я СБ 310-1 TRSB

				Type	Mass	Scale
Изм./Лист	№ докум.	Подп.	Дата	Лист	Масса	Масштаб
Разраб.				А	354	1:10
Проб.				Листов 1		
Т.контр.				Total Sheets 1		
Н.контр.				Sheet		
Утв.				Transportation Box No. 5 TRM		
				Assembly drawing		

Формат А2

Инд. № подл. Подп. и дата. Взам. инв. № Инв. № дубл. Подп. и дата. Справ. №

First use

Reference No.

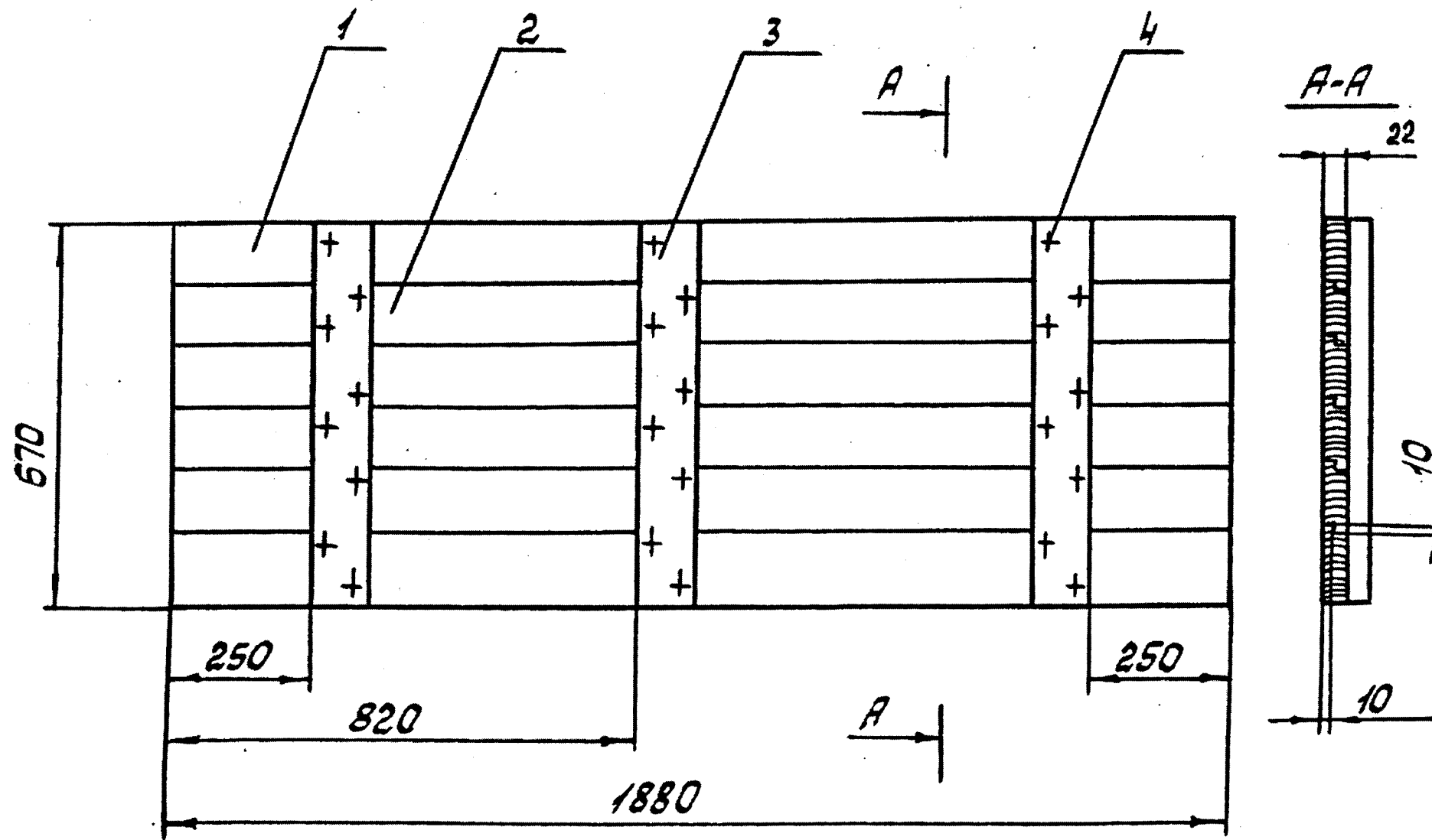
Sign and Date

Duplicate Inv. No

Alternate Inv. No

Sign and Date

Orig. inv. no.



Rz 500/ (✓)

1. Maximum deviation of dimensions as per standard accuracy class GOST 6449-5-82
2. Joining of boards in 1/4 without through gaps.
3. For special supply the boards should be made from edged board, without waness, dressed, holes due to knots not permissible.
4. It is permissible to make size 670 from boards 2 Khv-25 GOST 8486-86 of different width if they are not less than 70 mm.

Amend.	Sheet	Doc.No.	Sign	Date
Developed by				
Checked by				
Head of Q.C.D				
Approved by				

AK-630M-Ya Sb310-1-1 TR SB

**Cover-bottom
Assembly drawing**

Type	Weight	Scale
A	18.6	1:10
Sheet	Sheets	1

First use	Format	Zone	Pos.	Designation	Nomenclature	Qty.	Remarks
Reference No.					Documents		
	A3			AK-630M-Ya Sb 310-1-2TR SB	Assembly drawing		
					Components		
	WD	✓	1	AK-630M-Ya 310-1-4TR	Board-2 Khv-25 x 100 GOST 8486-86 L = 1880 ± 5	17	
	WD	✓	2	AK-630M-Ya 310-1-5TR	Board-2 Khv-25 x 150 GOST 8486-86 L = 1880 ± 5	1	
	WD	✓	3	AK-630M-Ya 310-1-6TR	Board-2 Khv-25 x 100 GOST 8486-86 L = 1940 ± 5	3	
					Standard articles		
			4		Nails K 2.5 x 60 GOST 4028-63	135	
	Sign and Date						
Dupl. Inv. No.							
Alternate Inv. No.							
Sign and Date							
Orig. Inv. No.							

					AK-630M-Ya Sb 310-1-2 TR		
Amend.	Sheet	Doc. No.	Sign	Date			
Developed by					Type	Sheet	Sheets
Checked by					A		1
Head of Q.C.D.					Side wall		
Approved by							

First use

Reference No.

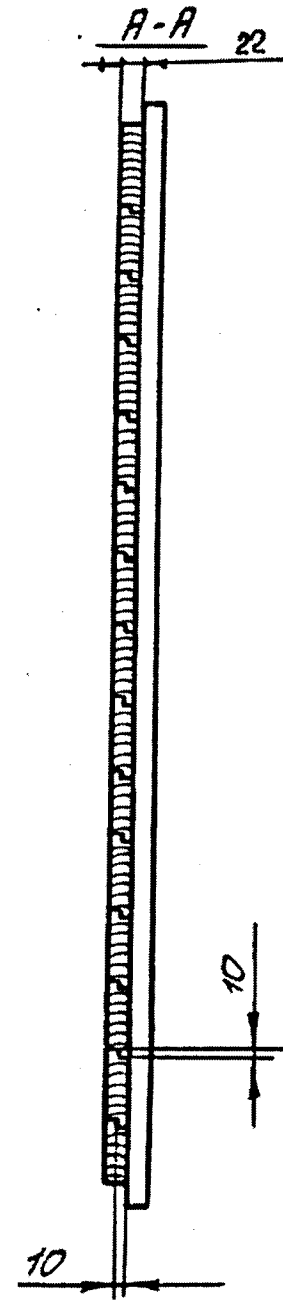
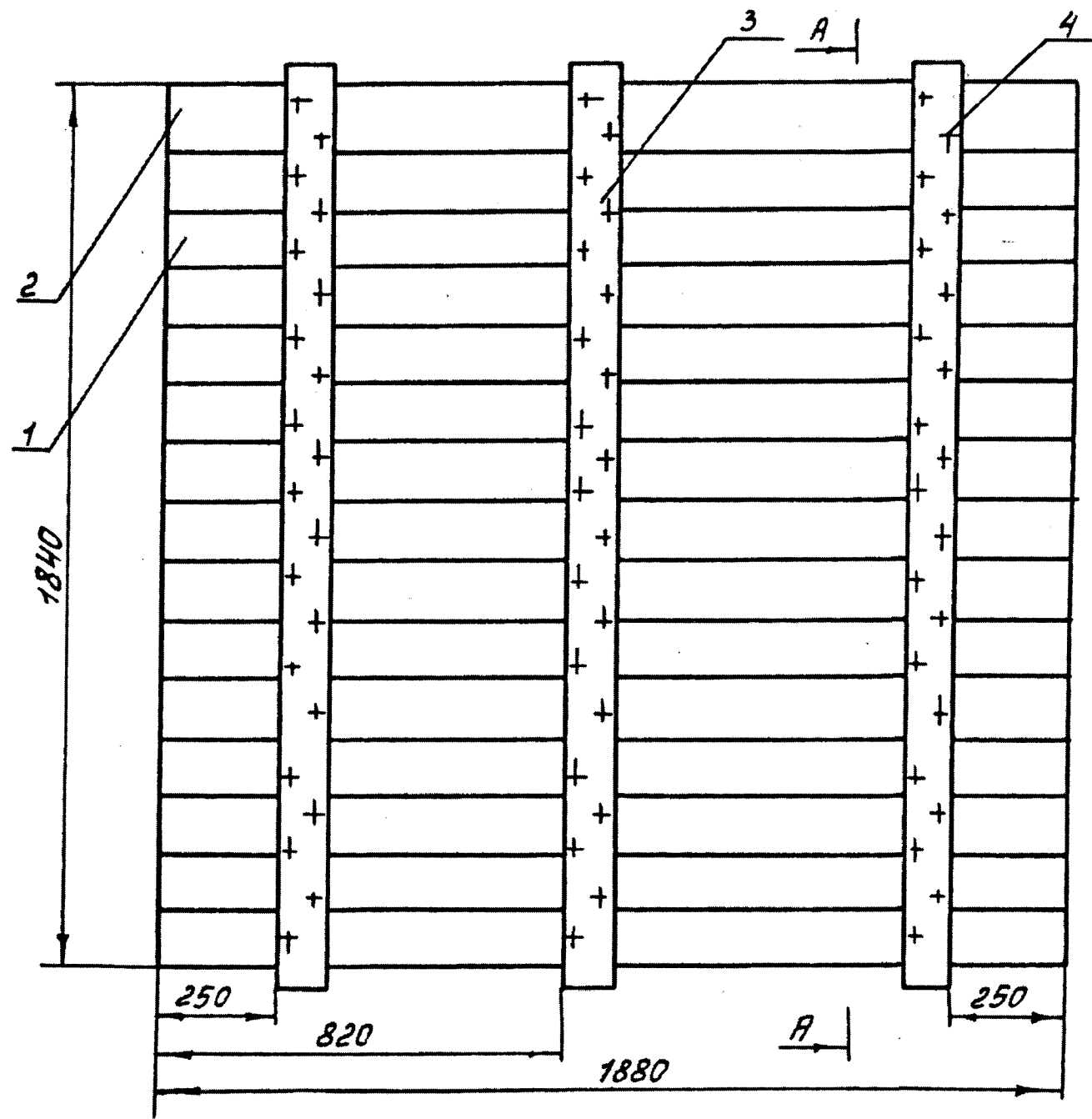
Sign and Date

Duplicate Inv. No

Alternate Inv. No

Sign and Date

Orig. inv. no.



R_z500/√(√)

1. Maximum deviation of dimensions as per standard accuracy class GOST 6449-5-82
2. Joining of boards in 1/4 without through gaps.
3. For special supply the boards should be made from edged board, without waness, dressed, holes due to knots not permissible.
4. It is permissible to make size 1840 from boards 2 Khv-25 GOST 8486-86 of different width if they are not less than 70 mm

Amend.	Sheet	Doc.No.	Sign	Date
Developed by				
Checked by				
Head of Q.C.D				
Approved by				

AK-630M-Ya Sb310-1-2 TR SB

**Side wall
Assembly drawing**

Type	Weight	Scale
A	69.5	1:10
Sheet	Sheets	1

First use

Reference No.

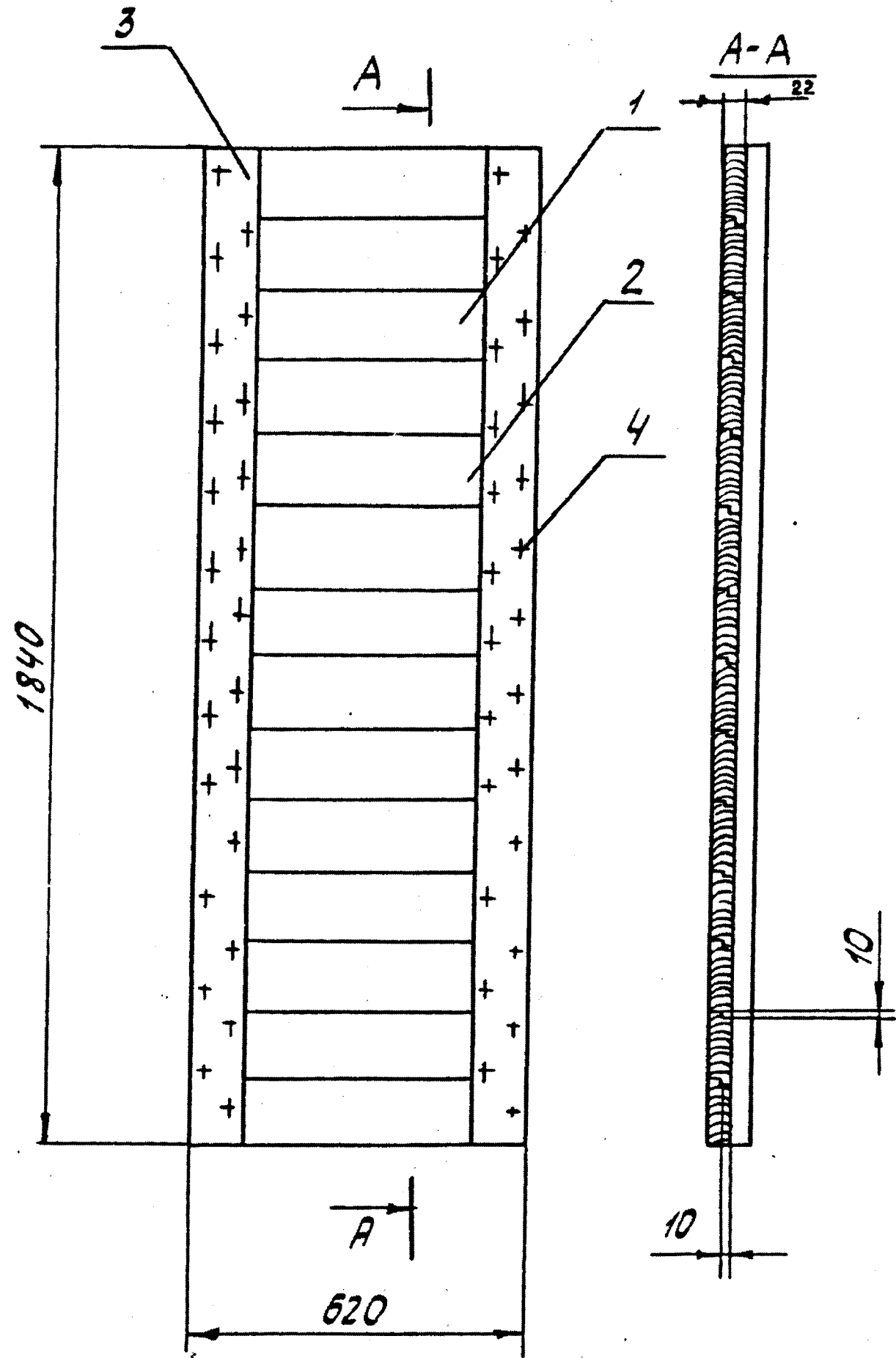
Sign and Date

Duplicate Inv. No

Alternate Inv. No

Sign and Date

Orig. inv. no.



Rz 500/ (✓)

1. Maximum deviation of dimensions as per standard accuracy class GOST 6449-5-82
2. Joining of boards in $\frac{1}{4}$ without through gaps.
3. For special supply the boards should be made from edged board, without waness, dressed, holes due to knots not permissible.
4. It is permissible to make size 1840 from boards 2 Khv-25 GOST 8486-86 of different width if they are not less than 70 mm.

					AK-630M-Ya Sb310-1-3 TR SB			
Amend.	Sheet	Doc.No.	Sign	Date	Face wall Assembly drawing	Type	Weight	Scale
Developed by						A	27.9	1:10
Checked by						Sheet	Sheets	1
Head of Q.C.D								
Approved by								