

1096
0169-
1/54

CAT./PART No.	NOMENCLATURE	No. PER ASSY.	DRAWING No.
	SCHEDULE OF PARTS COMPRISING :-		
1220-000361	SCALE, GRAPHICAL FIRING, SET, CORRECTION OF MOMENT, 105/37 FIELD GUN.		IRDE IIII
1220-000362	SCALE, GRAPHICAL FIRING, GRID CHARGE 2 & 3	1	IRDE IIII/1 (2 SH)
1220-000363	SCALE, GRAPHICAL FIRING, GRID CHARGE 4 & 5	1	IRDE IIII/2 (2 SH)
1220-000364	SCALE, GRAPHICAL FIRING, GRID CHARGE SUPER	1	IRDE IIII/3 (2 SH)
1220-000365	SCALE, GRAPHICAL FIRING, RANGE CH. 2, MET. 01, 02 & 03.	1	IRDE IIII/4
1220-000366	SCALE, GRAPHICAL FIRING, RANGE CH. 2, MET. 04	1	IRDE IIII/5
1220-000367	SCALE, GRAPHICAL FIRING, LINE CH. 2, MET. 01, 02, 03 & 04.	1	IRDE IIII/6
1220-000368	SCALE, GRAPHICAL FIRING, RANGE CH. 3, MET. 01, 02.	1	IRDE IIII/7
1220-000369	SCALE, GRAPHICAL FIRING, RANGE CH. 3, MET. 03	1	IRDE IIII/8
1220-000370	SCALE, GRAPHICAL FIRING, RANGE CH. 3, MET. 04	1	IRDE IIII/9
1220-000371	SCALE, GRAPHICAL FIRING, RANGE CH. 3, MET. 05	1	IRDE IIII/10
1220-000372	SCALE, GRAPHICAL FIRING, LINE CH. 3, MET. 01, 02	1	IRDE IIII/11
1220-000373	SCALE, GRAPHICAL FIRING, LINE CH. 3, MET. 03, 04, 05	1	IRDE IIII/12
1220-000374	SCALE, GRAPHICAL FIRING, RANGE CH. 4, MET. 02	1	IRDE IIII/13
1220-000375	SCALE, GRAPHICAL FIRING, RANGE CH. 4, MET. 03	1	IRDE IIII/14
1220-000376	SCALE, GRAPHICAL FIRING, RANGE CH. 4, MET. 04	1	IRDE IIII/15
1220-000377	SCALE, GRAPHICAL FIRING, RANGE CH. 4, MET. 05	1	IRDE IIII/16
1220-000378	SCALE, GRAPHICAL FIRING, LINE CH. 4, MET. 02	1	IRDE IIII/17
1220-000379	SCALE, GRAPHICAL FIRING, LINE CH. 4, MET. 03, 04, 05	1	IRDE IIII/18
1220-000380	SCALE, GRAPHICAL FIRING, RANGE CH. 5, MET. 03	1	IRDE IIII/19
1220-000381	SCALE, GRAPHICAL FIRING, RANGE CH. 5, MET. 04	1	IRDE IIII/20
1220-000382	SCALE, GRAPHICAL FIRING, RANGE CH. 5, MET. 05	1	IRDE IIII/21
1220-000383	SCALE, GRAPHICAL FIRING, RANGE CH. 5, MET. 06	1	IRDE IIII/22
1220-000384	SCALE, GRAPHICAL FIRING, LINE CH. 5, MET. 03, 04, 05, 06	1	IRDE IIII/23
1220-000385	SCALE, GRAPHICAL FIRING, RANGE CH. SUPER, MET. 03	1	IRDE IIII/24
1220-000386	SCALE, GRAPHICAL FIRING, RANGE CH. SUPER, MET. 04	1	IRDE IIII/25
1220-000387	SCALE, GRAPHICAL FIRING, RANGE CH. SUPER, MET. 05	1	IRDE IIII/26
1220-000388	SCALE, GRAPHICAL FIRING, RANGE CH. SUPER, MET. 06	1	IRDE IIII/27

D.C.(D)-1122-I(P), 1132-I(P), 4936-I.

REPREPARED AT CII DEHRADUN
 PREP. BY:- P. Das
 TRCD. BY:-
 CHKD BY:-
 DATE :- 1.7.84

FOR TRADE USE
 Date of Issue 23/12/84
 12/08/2020
 M

			PREPARED	TRACED	CHECKED	APPROVED
			sd/.	sd/.	sd/.	sd/.
			SCHEDULE FOR DRG. No.			FOR
			IRDE IIII			DIRECTOR
			SCHEDULE FOR CAT./PART No.			IRDE, DEHRADUN
			1220-000361			16.12.82
D.C.(D)-4936-I.						
SCH. SEALED.		15-11-85.				
D.C.(D)-1132-I(P). SCH. REPREPARED & PROV. SEALED IN SUPERSESSION OF EXISTING SCH.		2.7.84				
AMENDMENTS	SIG	DATE	2 SHTS.		SHT. 1	

5B

CAT./PART No.	NOMENCLATURE		No. PER ASSY.	DRAWING No.
	SCHEDULE OF PARTS COMPRISING :-			
1220-000361	SCALE, GRAPHICAL FIRING, SET CORRECTION OF MOMENT, 105/37 FIELD GUN.			IRDE IIII
1220-000389	SCALE, GRAPHICAL FIRING, RANGE No.1 CH. SUPER, MET.07		1	IRDE IIII/28
1220-000390	SCALE, GRAPHICAL FIRING, RANGE No.2 CH. SUPER, MET.07		1	IRDE IIII/29
1220-000391	SCALE, GRAPHICAL FIRING, RANGE No.1 CH. SUPER, MET.08		1	IRDE IIII/30
1220-000392	SCALE, GRAPHICAL FIRING, RANGE No.2 CH. SUPER, MET.08		1	IRDE IIII/31
1220-000393	SCALE, GRAPHICAL FIRING, LINE CH. SUPER MET.03 TO 08		1	IRDE IIII/32
1220-000394	SCALE, GRAPHICAL FIRING, LINE CORRECTION CH. 2, CH.3, CH.4.		1	IRDE IIII/33
1220-000395	SCALE, GRAPHICAL FIRING, LINE CORRECTION CH.5, CH. SUPER.		1	IRDE IIII/34
1220-000396	CASE, SCALE GRAPHICAL FIRING		1	IRDE IIII/35
1220-000035	PROTRACTOR, CIRCULAR		1	IRDE 173/3(55H)
ACCESSORIES :-				
	PENCIL SOFT (LEAD OF GOOD QUALITY)		2	
	ERASER, RUBBER (PENCIL) 19.0 X 9.5 X 76.0 LG		1	
FOR TRADE USE Date of Issue <u>28/12/19</u> 12/02/2020 <i>M</i> Ry				

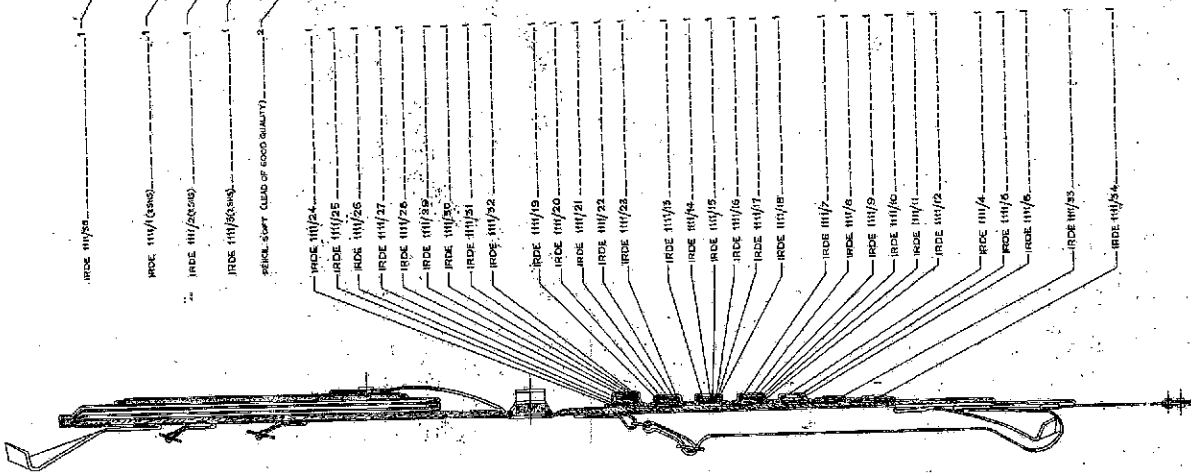
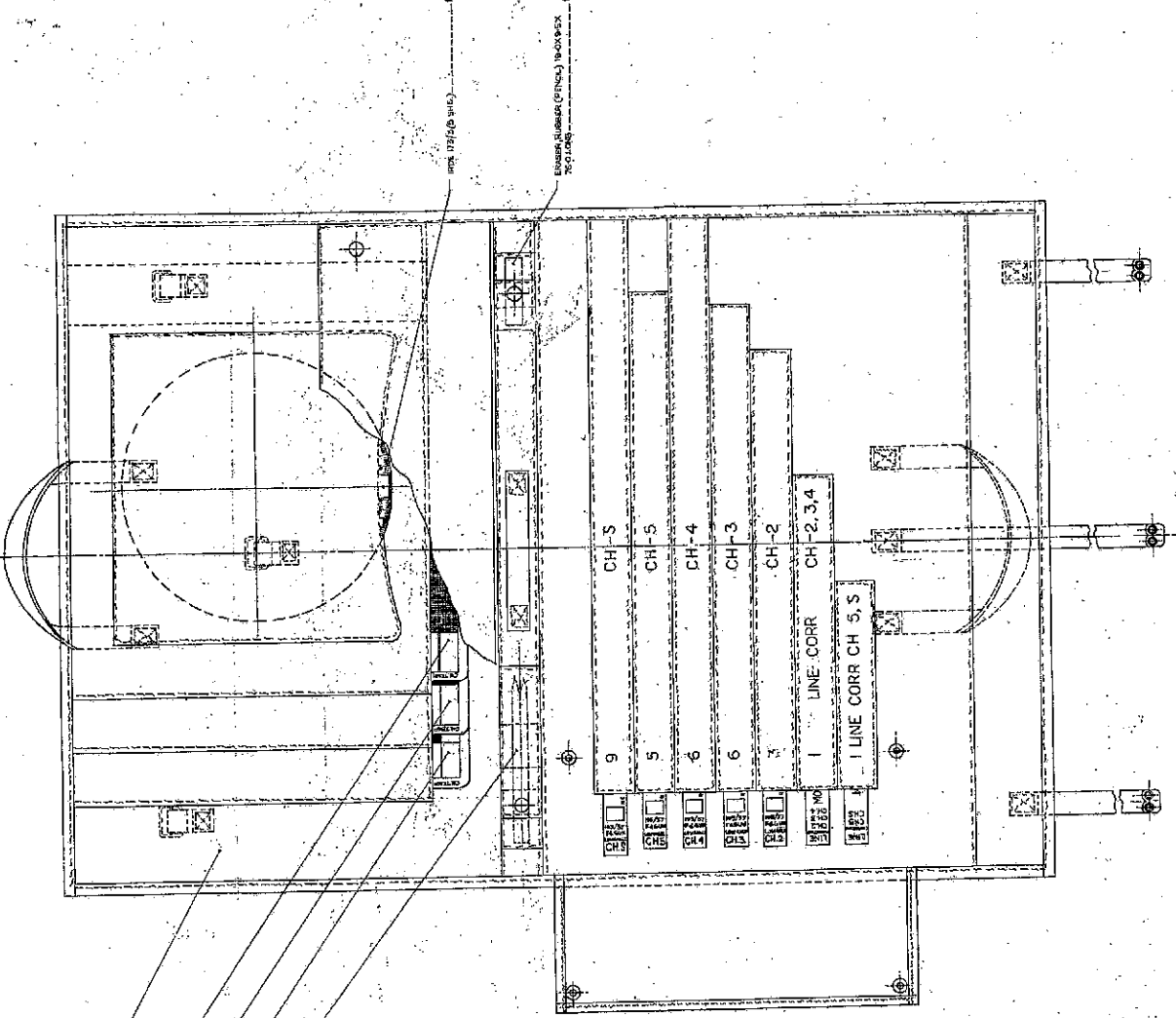
D.C.(I)-1122-I(P), 1132-I(P), 4936-I.

REPREPARED AT CII DEHRADUN
 PREP. BY:- P. Das
 TRCD. BY:-
 CHKD. BY:-
 DATE:- 1.7.84

			PREPARED sd/-	TRACED sd/-	CHECKED sd/-	APPROVED sd/-
SCHEDULE FOR DRG. No.						FOR
IRDE IIII						DIRECTOR
						IRDE DEHRADUN
						16.12.82
SCHEDULE FOR CAT./PART No.						
1220-000361						
D.C.(I)-4936-I. SCH. SEALED.		N	16.11.85.			
D.C.(I)-1132-I(P) SCH REPREPARED & PROV SEALED IN SUPERSESSION OF EXISTING ONE.			2.7.84			
AMENDMENTS	SIG	DATE	2 SHTS.		SHT. 2	

DATE	1/17/20
BY	...
CHECKED	...
APPROVED	...

3/



FOR TRADE ONLY
 Date of Issue 28/12/19
 18/10/20
 M
 Ref.

SCALE GRAPHIC: FIRING SFT CORRECTION OF MOMENT 10/5/27 FIELD GUN

COLOUR CODE PATCH 2145 TO BE PHOTO-PRINTED FROM ONE SIDE OF THIS SHEET

CHARGE-2
12 105/37 F.G. UN
24 11 11 MO-R 59(N)
30 LOW ANGLE 1

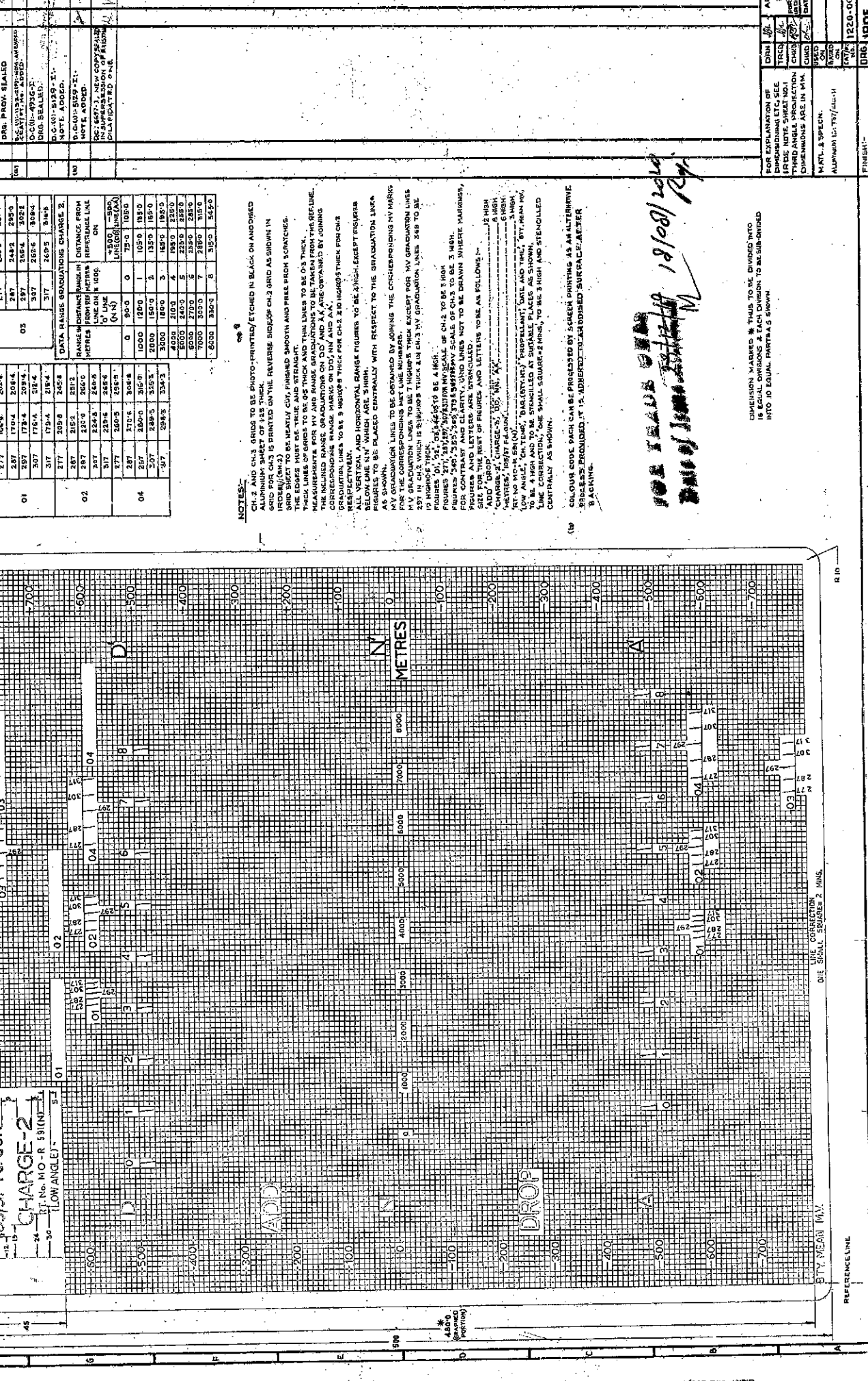
DATE AND TIME

PROPELLANT

BAR (BTY HT)

BTY MEAN (M)

REFERENCE LINE



DATA MV GRADUATIONS CHARGE-2		DISTANCE FROM REFERENCE LINE		DISTANCE FROM MV	
MV LINE NO.	MV (%)	1000 ON	1000 OFF	THIN	THICK
01	277	1704	2018	217	249
	287	1704	2018	287	343
	297	1774	2094	297	384
	307	1774	2164	307	425
	317	1794	2164	317	466
02	277	2098	2458	277	309
	287	2152	2512	287	350
	297	2206	2566	297	391
	307	2260	2620	307	432
	317	2314	2674	317	473
04	277	2605	3265	277	390
	287	2706	3366	287	431
	297	2807	3467	297	472
	307	2908	3568	307	513
	317	2988	3648	317	554

NOTES:

CH-2 AND CH-3 GRIDS TO BE PHOTO-PRINTED/ETCHED IN BLACK ON AN OILED ALUMINUM SHEET OR ON A CLEAR POLYESTER FILM. CH-2 GRIDS TO BE PRINTED ON IRD-100 (9M-3).

GRID SHEET TO BE HEAVILY CUT, FINISHED SMOOTH AND FREE FROM SCRATCHES. THE EDGES MUST BE TRUE AND STRAIGHT.

THICK LINES OF GRIDS, MV AND RANGE GRADUATIONS TO BE TAKEN FROM THE REFLINE. THE INCLUDED RANGE GRADUATIONS ON D² AND A² ARE OBTAINED BY JOINING CORRESPONDING RANGE MARKS ON D², M² AND A².

GRADUATION LINES TO BE 3 HIGHER THAN THOSE FOR CH-2. 2.0 HIGHER THAN FOR CH-3 RESPECTIVELY. VERTICAL AND HORIZONTAL RANGE FIGURES TO BE 2 HIGH, EXCEPT FIGURES BELOW LINE M² WHICH ARE 3 HIGH.

FIGURES TO BE PLACED CENTRALLY WITH RESPECT TO THE GRADUATION LINES AS SHOWN.

MV GRADUATION LINES TO BE OBTAINED BY JOINING THE CORRESPONDING MV MARKS. MV GRADUATION LINES TO BE 7 HIGHER THAN THOSE FOR CH-2 GRIDS EXCEPT FOR MV GRADUATION LINES 289 TO BE 19 HIGHER THAN THOSE FOR CH-2 GRIDS.

FIGURES 01, 02, 03, 04, 05, 06, 07, 08, 09, 10, 11, 12, 13, 14, 15, 16, 17, 18, 19, 20, 21, 22, 23, 24, 25, 26, 27, 28, 29, 30, 31, 32, 33, 34, 35, 36, 37, 38, 39, 40, 41, 42, 43, 44, 45, 46, 47, 48, 49, 50, 51, 52, 53, 54, 55, 56, 57, 58, 59, 60, 61, 62, 63, 64, 65, 66, 67, 68, 69, 70, 71, 72, 73, 74, 75, 76, 77, 78, 79, 80, 81, 82, 83, 84, 85, 86, 87, 88, 89, 90, 91, 92, 93, 94, 95, 96, 97, 98, 99, 100.

FOR CONTRAST AND CLARITY, GRID LINES NOT TO BE DRAWN WHERE MARKINGS, FIGURES AND LETTERS ARE STENCILLED.

SIZE FOR THE REST OF FIGURES AND LETTERS TO BE AS FOLLOWS:—

CHARGE-2, CHARGE-3, 05, 06, 07, 08, 09, 10, 11, 12, 13, 14, 15, 16, 17, 18, 19, 20, 21, 22, 23, 24, 25, 26, 27, 28, 29, 30, 31, 32, 33, 34, 35, 36, 37, 38, 39, 40, 41, 42, 43, 44, 45, 46, 47, 48, 49, 50, 51, 52, 53, 54, 55, 56, 57, 58, 59, 60, 61, 62, 63, 64, 65, 66, 67, 68, 69, 70, 71, 72, 73, 74, 75, 76, 77, 78, 79, 80, 81, 82, 83, 84, 85, 86, 87, 88, 89, 90, 91, 92, 93, 94, 95, 96, 97, 98, 99, 100.

COLOUR CODE PATCH CAN BE PROTECTED BY GREEN PRINTING AS AN ALTERNATIVE. UNLESS PROVIDED, IT IS ADHERED TO AN UNOILED SURFACE/ACETATE BACKING.

FOR EXPLANATION OF DIMENSIONS ETC. SEE IRD-100 (9M-3) SHEET NO. 1 THIRD ANGLE PROJECTION DIMENSIONS ARE IN MM.

MATL. & SPECN.

APPROVED: 15/10/77/ALH

1820-000362

IRDE (M)

SCALE 1:1

SHT. 2 OF 2

NOT READ ON
DATE 18/01/81

DISPOSITION MARKS TO BE DIVIDED INTO 10 EQUAL PARTS AS SHOWN

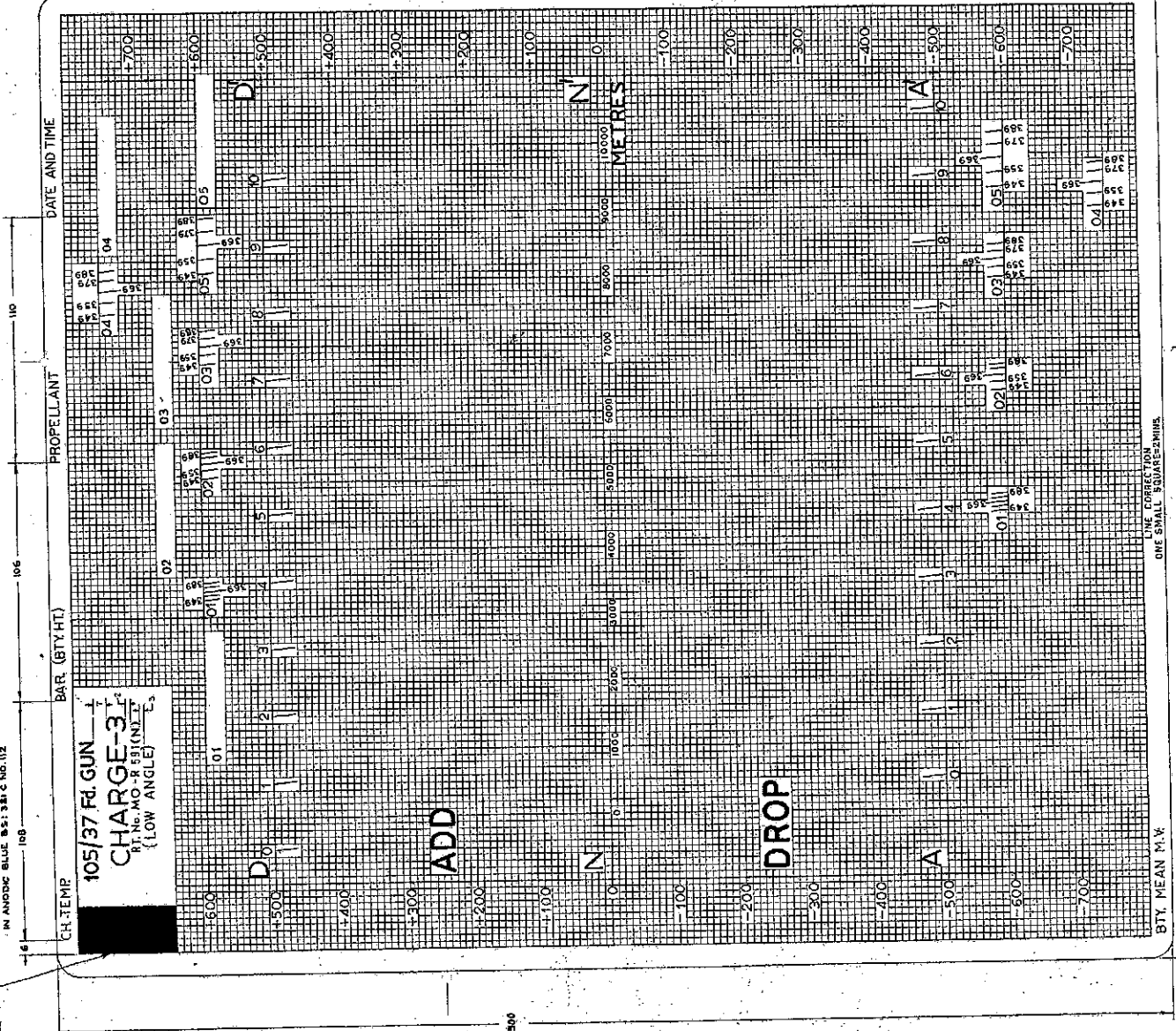
SYMBOL	AMENDMENTS	CHG DATE	BY
01	AS ISSUED DRG. PREP. SEALED BY: [Signature]		
02	AS ISSUED DRG. PREP. SEALED BY: [Signature]		
03	AS ISSUED DRG. PREP. SEALED BY: [Signature]		
04	AS ISSUED DRG. PREP. SEALED BY: [Signature]		
05	AS ISSUED DRG. PREP. SEALED BY: [Signature]		

DATA M.V. GRADUATIONS CHARGE-3

MET. LINE NO.	M.V. THIS ON	DISTANCE FROM REF. LINE ON	M.V. THIS ON	DISTANCE FROM REF. LINE ON
01	349	573	1953	349
02	349	573	1953	349
03	349	573	1953	349
04	349	573	1953	349
05	349	573	1953	349

DATA RANGE GRADUATIONS CH-3

RANGE IN METRES	DISTANCE FROM REF. LINE ON	DISTANCE FROM REF. LINE ON
0	45.0	0
1	75.0	100.0
2	105.0	200.0
3	135.0	300.0
4	165.0	400.0
5	195.0	500.0
6	225.0	600.0
7	255.0	700.0
8	285.0	800.0
9	315.0	900.0
10	345.0	1000.0



FOR TALKING WITH
OFFICE OF INSURANCE

12/10/1971

NOTE:-
NOTES AND DIMENSIONS NOT GIVEN IN THE DRAWING, SEE IRDE III(1)(4)(1)

DRG. NO.	APPROVED	DATE
IRDE III/1220-000362	[Signature]	12/10/1971

SCALE GRAPHICAL FIRING, GRID CHARGE 2 & 3

440

BTY, MEAN M.V.

REFERENCE LINK

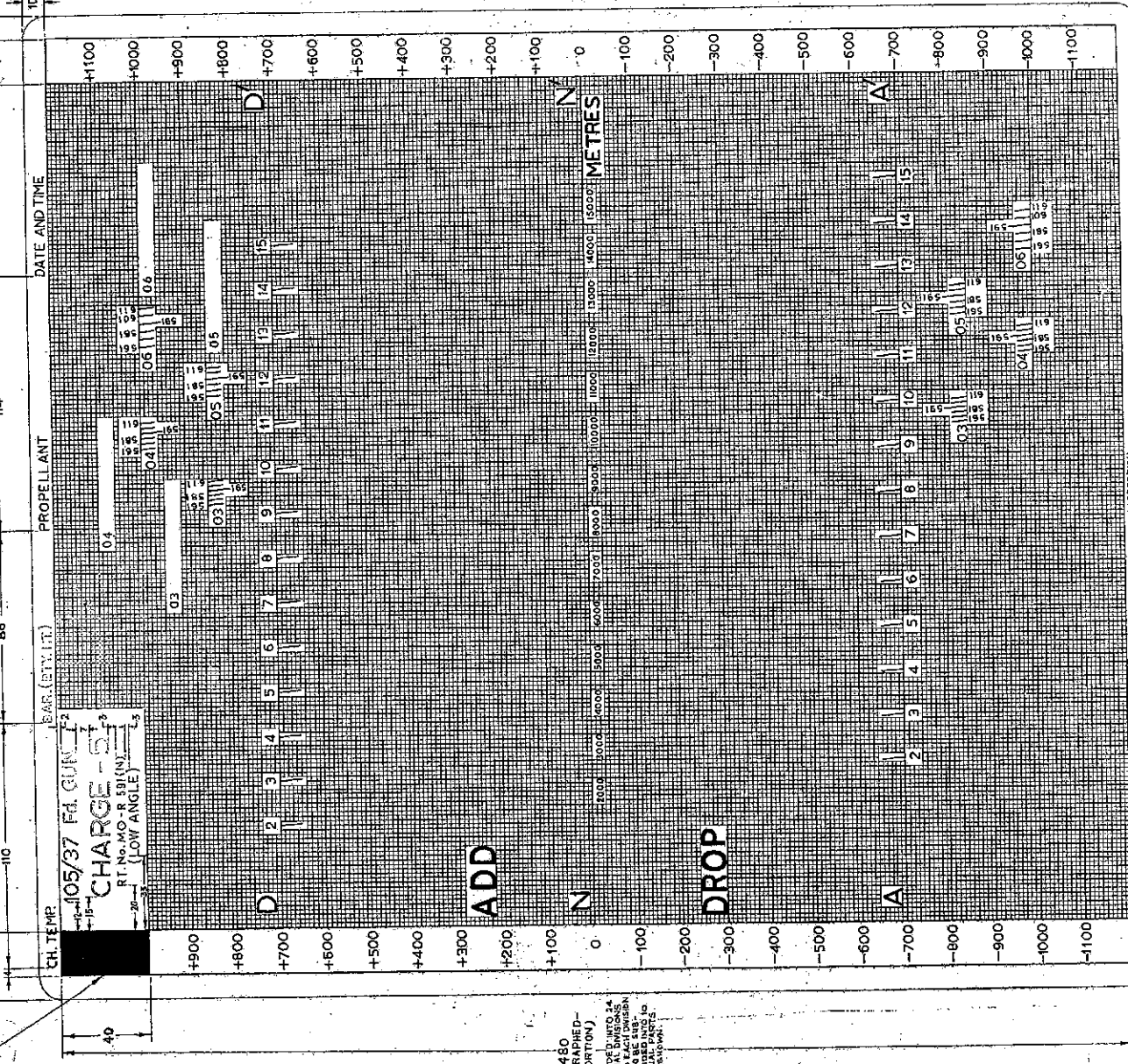
COLOUR CODE PATCH 20X40 TO BE PHOTO-PRINTED IN ANODIC GREEN
 IS: 5-1961, No. 217 OR 218

CH. TEMP. 40
 105/37 Fd. GUN
 CHARGE - 51
 R. No. 838 (N) 43
 (LOW ANGLE) 43

PROPELLANT
 BAR. (STY. LT.)

DATE AND TIME
 06/11/06

380 (GRADED PORTION) SERIAL DIVISIONS AND EACH DIVISIONS
 IS TO BE SUB-DIVIDED INTO TO EQUAL PARTS AS SHOWN.



DATA MV GRADUATIONS CHARGE -5

NET LINE NO.	MV m/s	DISTANCE FROM REF. LINE		RANGE IN METRES	DISTANCE FROM REF. LINE	
		ON LINE	LINE		ON LINE	LINE
04	561	216.3	255.3	561	190.3	224.3
	581	220.1	260.1	581	194.5	228.5
	591	222.4	265.4	591	195.6	230.6
06	611	227.0	267.0	611	200.7	234.7
	561	261.0	301.0	561	236.4	272.4
	581	268.0	309.0	581	243.7	277.7
08	601	271.5	311.5	601	246.3	280.3
	601	275.0	315.0	601	248.9	282.9
	611	278.3	318.3	611	251.4	285.4

DATA RANGE GRADUATIONS CH-5

RANGE IN METRES	DISTANCE FROM REF. LINE		RANGE IN METRES	DISTANCE FROM REF. LINE	
	ON LINE	LINE		ON LINE	LINE
2	46.0	74.0	2000	60.0	60.0
3	66.0	94.0	3000	80.0	80.0
4	86.0	114.0	4000	100.0	100.0
5	106.0	134.0	5000	120.0	120.0
6	126.0	154.0	6000	140.0	140.0
7	146.0	174.0	7000	160.0	160.0
8	166.0	194.0	8000	180.0	180.0
9	186.0	214.0	9000	200.0	200.0
10	206.0	234.0	10000	220.0	220.0
11	226.0	254.0	11000	240.0	240.0
12	246.0	274.0	12000	260.0	260.0
13	266.0	294.0	13000	280.0	280.0
14	286.0	314.0	14000	300.0	300.0
15	306.0	334.0	15000	320.0	320.0

NOTE: NOTES AND DIMENSIONS NOT GIVEN IN THE DRAWING, SEE IRDE III/2 (SHT.1)

FOR BLADE GUN
Date of Issue 21/11/19 12/10/01
M
Rg

APPROVED	DATE	BY
IRDE III/2	1220-000-263	IRDE III/2
SCALE	1:1	SHEET 2 OF 2

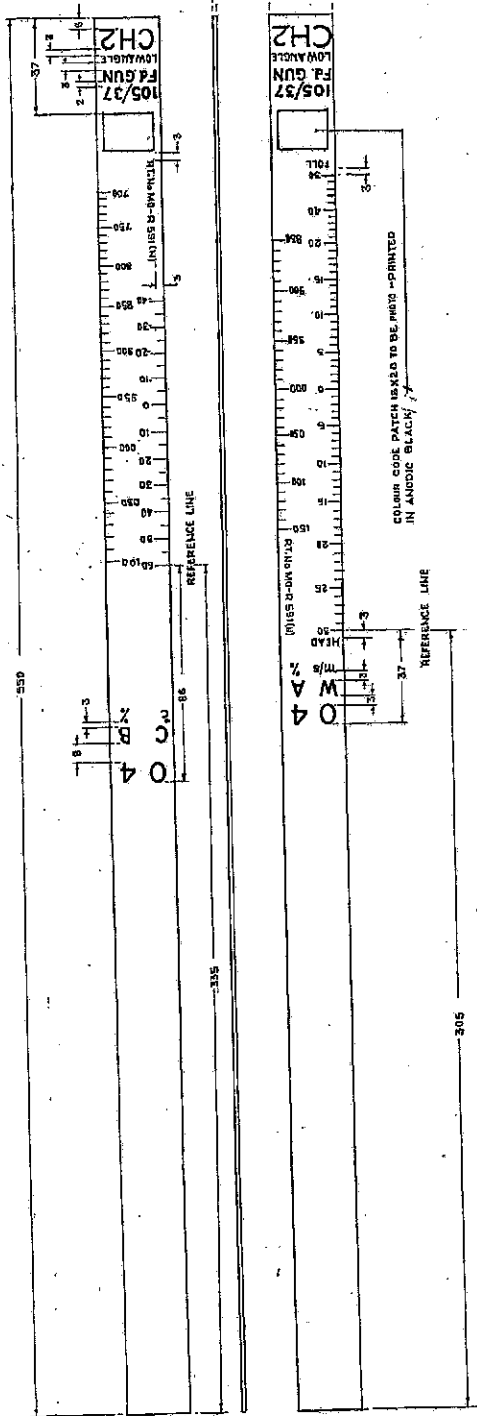
SCALE, GRAPHICAL FIRING, GRID CHARGE 4 & 5

REFERENCE LINE

LINE CORRECTION
 ONE SMALL SQUARE = 4MM

480 (GRADED PORTION)
 SERIAL DIVISIONS AND EACH DIVISION IS TO BE SUB-DIVIDED INTO TO EQUAL PARTS AS SHOWN

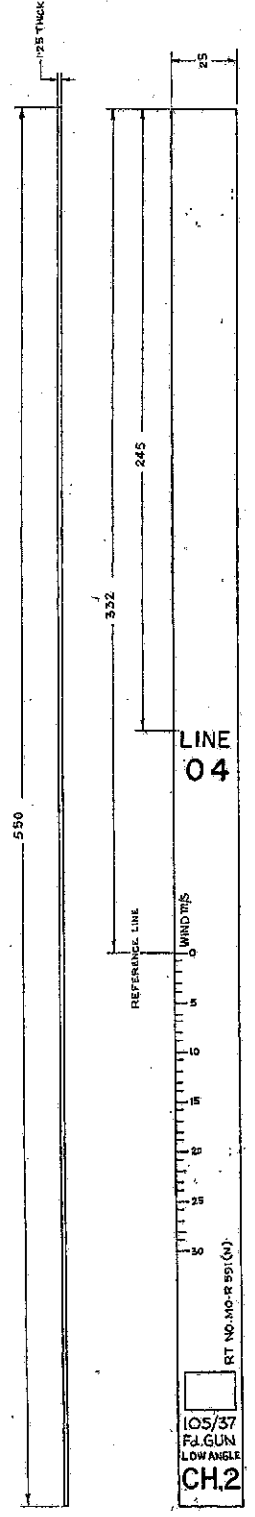
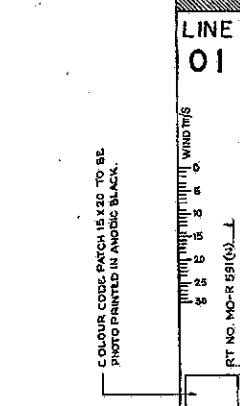
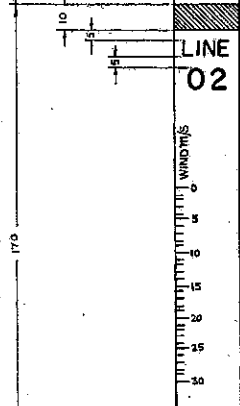
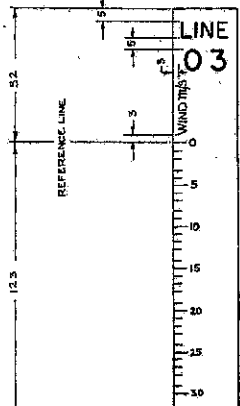
SYMBOL	AMENDMENTS	DATE	BY
1	REVISED TO SHOW DIMENSIONS AND MATERIALS	1/1/55	J.M.B.
2	REVISED TO SHOW DIMENSIONS AND MATERIALS	1/1/55	J.M.B.
3	REVISED TO SHOW DIMENSIONS AND MATERIALS	1/1/55	J.M.B.
4	REVISED TO SHOW DIMENSIONS AND MATERIALS	1/1/55	J.M.B.
5	REVISED TO SHOW DIMENSIONS AND MATERIALS	1/1/55	J.M.B.
6	REVISED TO SHOW DIMENSIONS AND MATERIALS	1/1/55	J.M.B.
7	REVISED TO SHOW DIMENSIONS AND MATERIALS	1/1/55	J.M.B.
8	REVISED TO SHOW DIMENSIONS AND MATERIALS	1/1/55	J.M.B.
9	REVISED TO SHOW DIMENSIONS AND MATERIALS	1/1/55	J.M.B.
10	REVISED TO SHOW DIMENSIONS AND MATERIALS	1/1/55	J.M.B.
11	REVISED TO SHOW DIMENSIONS AND MATERIALS	1/1/55	J.M.B.
12	REVISED TO SHOW DIMENSIONS AND MATERIALS	1/1/55	J.M.B.
13	REVISED TO SHOW DIMENSIONS AND MATERIALS	1/1/55	J.M.B.
14	REVISED TO SHOW DIMENSIONS AND MATERIALS	1/1/55	J.M.B.
15	REVISED TO SHOW DIMENSIONS AND MATERIALS	1/1/55	J.M.B.
16	REVISED TO SHOW DIMENSIONS AND MATERIALS	1/1/55	J.M.B.
17	REVISED TO SHOW DIMENSIONS AND MATERIALS	1/1/55	J.M.B.
18	REVISED TO SHOW DIMENSIONS AND MATERIALS	1/1/55	J.M.B.
19	REVISED TO SHOW DIMENSIONS AND MATERIALS	1/1/55	J.M.B.
20	REVISED TO SHOW DIMENSIONS AND MATERIALS	1/1/55	J.M.B.



SCALE DISTANCE OF SCALE FROM REFERENCE LINE (INCHES)	SCALE DISTANCE OF SCALE FROM REFERENCE LINE (MILLIMETERS)	SCALE DISTANCE OF SCALE FROM REFERENCE LINE (CENTIMETERS)	SCALE DISTANCE OF SCALE FROM REFERENCE LINE (METERS)	SCALE DISTANCE OF SCALE FROM REFERENCE LINE (KILOMETERS)	SCALE DISTANCE OF SCALE FROM REFERENCE LINE (MILES)	SCALE DISTANCE OF SCALE FROM REFERENCE LINE (KILOMETERS)	SCALE DISTANCE OF SCALE FROM REFERENCE LINE (METERS)	SCALE DISTANCE OF SCALE FROM REFERENCE LINE (CENTIMETERS)	SCALE DISTANCE OF SCALE FROM REFERENCE LINE (MILLIMETERS)	SCALE DISTANCE OF SCALE FROM REFERENCE LINE (INCHES)
100	2.5	6.3	16.3	41.3	104.3	263	663	1683	4283	1083
200	5.1	12.6	32.6	82.6	208.6	528.6	1348.6	3448.6	8783	2213
300	7.7	18.9	48.9	123.9	313.9	788.9	2008.9	5148.9	13083	3343
400	10.3	25.2	64.2	164.2	418.2	1068.2	2708.2	6908.2	17583	4473
500	12.9	31.5	80.5	205.5	523.5	1328.5	3368.5	8568.5	21783	5603
600	15.5	37.8	96.8	246.8	628.8	1588.8	4028.8	10228.8	26083	6733
700	18.1	44.1	113.1	288.1	733.1	1848.1	4688.1	11888.1	30283	7863
800	20.7	50.4	129.4	329.4	838.4	2108.4	5348.4	13548.4	34483	8993
900	23.3	56.7	145.7	370.7	943.7	2368.7	6008.7	15208.7	38683	10123
1000	25.9	63.0	162.0	412.0	1049.0	2629.0	6669.0	16869.0	42883	11253
1100	28.5	69.3	178.3	453.3	1154.3	2889.3	7329.3	18529.3	47083	12383
1200	31.1	75.6	194.6	494.6	1259.6	3149.6	7989.6	20189.6	51283	13513
1300	33.7	81.9	210.9	535.9	1364.9	3409.9	8649.9	21849.9	55483	14643
1400	36.3	88.2	227.2	577.2	1470.2	3670.2	9310.2	23510.2	59683	15773
1500	38.9	94.5	243.5	618.5	1575.5	3930.5	9970.5	25170.5	63883	16903
1600	41.5	100.8	259.8	659.8	1680.8	4190.8	10630.8	26830.8	68083	18033
1700	44.1	107.1	276.1	701.1	1786.1	4451.1	11291.1	28491.1	72283	19163
1800	46.7	113.4	292.4	742.4	1891.4	4711.4	11951.4	30151.4	76483	20293
1900	49.3	119.7	308.7	783.7	1996.7	4971.7	12611.7	31811.7	80683	21423
2000	51.9	126.0	325.0	825.0	2102.0	5232.0	13272.0	33472.0	84883	22553
2100	54.5	132.3	341.3	866.3	2207.3	5492.3	13932.3	35132.3	89083	23683
2200	57.1	138.6	357.6	907.6	2312.6	5752.6	14592.6	36792.6	93283	24813
2300	59.7	144.9	373.9	948.9	2417.9	6012.9	15252.9	38452.9	97483	25943
2400	62.3	151.2	390.2	990.2	2523.2	6273.2	15913.2	40113.2	101683	27073
2500	64.9	157.5	406.5	1031.5	2628.5	6533.5	16573.5	41773.5	105883	28203
2600	67.5	163.8	422.8	1072.8	2733.8	6793.8	17233.8	43433.8	110083	29333
2700	70.1	170.1	439.1	1114.1	2839.1	7054.1	17894.1	45094.1	114283	30463
2800	72.7	176.4	455.4	1155.4	2944.4	7314.4	18554.4	46754.4	118483	31593
2900	75.3	182.7	471.7	1196.7	3049.7	7574.7	19214.7	48414.7	122683	32723
3000	77.9	189.0	488.0	1238.0	3155.0	7835.0	19875.0	50075.0	126883	33853
3100	80.5	195.3	504.3	1279.3	3260.3	8095.3	20535.3	51735.3	131083	34983
3200	83.1	201.6	520.6	1320.6	3365.6	8355.6	21195.6	53395.6	135283	36113
3300	85.7	207.9	536.9	1361.9	3470.9	8615.9	21855.9	55055.9	139483	37243
3400	88.3	214.2	553.2	1403.2	3576.2	8876.2	22516.2	56716.2	143683	38373
3500	90.9	220.5	569.5	1444.5	3681.5	9136.5	23176.5	58376.5	147883	39503
3600	93.5	226.8	585.8	1485.8	3786.8	9396.8	23836.8	60036.8	152083	40633
3700	96.1	233.1	602.1	1527.1	3892.1	9657.1	24497.1	61697.1	156283	41763
3800	98.7	239.4	618.4	1568.4	3997.4	9917.4	25157.4	63357.4	160483	42893
3900	101.3	245.7	634.7	1609.7	4102.7	10177.7	25817.7	65017.7	164683	44023
4000	103.9	252.0	651.0	1651.0	4208.0	10438.0	26478.0	66678.0	168883	45153
4100	106.5	258.3	667.3	1692.3	4313.3	10698.3	27138.3	68338.3	173083	46283
4200	109.1	264.6	683.6	1733.6	4418.6	10958.6	27798.6	69998.6	177283	47413
4300	111.7	270.9	699.9	1774.9	4523.9	11218.9	28458.9	71658.9	181483	48543
4400	114.3	277.2	716.2	1816.2	4629.2	11479.2	29119.2	73319.2	185683	49673
4500	116.9	283.5	732.5	1857.5	4734.5	11739.5	29779.5	74979.5	189883	50803
4600	119.5	289.8	748.8	1898.8	4839.8	12000.0	30439.8	76639.8	194083	51933
4700	122.1	296.1	765.1	1940.1	4945.1	12260.3	31099.8	78299.8	198283	53063
4800	124.7	302.4	781.4	1981.4	5050.4	12520.6	31760.1	79960.1	202483	54193
4900	127.3	308.7	797.7	2022.7	5155.7	12780.9	32420.4	81620.4	206683	55323
5000	129.9	315.0	814.0	2064.0	5261.0	13041.2	33080.7	83280.7	210883	56453
5100	132.5	321.3	830.3	2105.3	5366.3	13301.5	33741.0	84941.0	215083	57583
5200	135.1	327.6	846.6	2146.6	5471.6	13561.8	34401.3	86601.3	219283	58713
5300	137.7	333.9	862.9	2187.9	5576.9	13822.1	35061.6	88261.6	223483	59843
5400	140.3	340.2	879.2	2229.2	5682.2	14082.4	35721.9	89921.9	227683	60973
5500	142.9	346.5	895.5	2270.5	5787.5	14342.7	36382.2	91582.2	231883	62103
5600	145.5	352.8	911.8	2311.8	5892.8	14603.0	37042.5	93242.5	236083	63233
5700	148.1	359.1	928.1	2353.1	5998.1	14863.3	37702.8	94902.8	240283	64363
5800	150.7	365.4	944.4	2394.4	6103.4	15123.6	38363.1	96563.1	244483	65493
5900	153.3	371.7	960.7	2435.7	6208.7	15383.9	39023.4	98223.4	248683	66623
6000	155.9	378.0	977.0	2477.0	6314.0	15644.2	39683.7	99883.7	252883	67753
6100	158.5	384.3	993.3	2518.3	6419.3	15904.5	40344.0	101544.0	257083	68883
6200	161.1	390.6	1009.6	2559.6	6524.6	16164.8	41004.3	103204.3	261283	70013
6300	163.7	396.9	1025.9	2600.9	6629.9	16425.1	41664.6	104864.6	265483	71143
6400	166.3	403.2	1042.2	2642.2	6735.2	16685.4	42324.9	106524.9	269683	72273
6500	168.9	409.5	1058.5	2683.5	6840.5	16945.7	42985.2	108185.2	273883	73403
6600	171.5	415.8	1074.8	2724.8	6945.8	17206.0	43645.5	109845.5	278083	74533
6700	174.1	422.1	1091.1	2766.1	7051.1	17466.3	44305.8	111505.8	282283	75663
6800	176.7	428.4	1107.4	2807.4	7156.4	17726.6	44966.1	113166.1	286483	76793
6900	179.3	434.7	1123.7	2848.7	7261.7	17986.9	45626.4	114826.4	290683	77923
7000	181.9	441.0	1140.0	2890.0	7367.0	18247.2	46286.7	116486.7	294883	79053
7100	184.5	447.3	1156.3	2931.3	7472.3	18507.5	46947.0	118147.0	299083	80183
7200	187.1	453.6	1172.6	2972.6	7577.6	18767.8	47607.3	119807.3	303283	81313
7300	189.7	459.9	1188.9	3013.9	7682.9	19028.1	48267.6	121467.6	307483	82443
7400	192.3	466.2	1205.2	3055.2	7788.2	19288.4	48927.9	123127.9	311683	83573
7500	194.9	472.5	1221.5	3096.5	7893.5	19548.7	49588.2	124788.2	315883	84703
7600	197.5	478.8	1237.8	3137.8	7998.8	19809.0	50248.5	126448.5	320083	85833
7700	200.1	485.1	1254.1	3179.1	8104.1	20069.3	50908.8	128108.8	324283	86963
7800	202.7	491.4	1270.4	3220.4	8209.4	20329.6	51569.1	129769.1	328483	88093
7900	205.3	497.7	1286.7	3261.7	8314.7	20589.9	52229.4	131429.4	332683	89223
8000	207.9	504.0	1303.0	3303.0	8420.0	20850.2	52889.7	133089.7	336883	90353
8100	210.5	510.3	1319.3	3344.3	8525.3	21110.5	53550.0	134750.0	341083	91483
8200	213.1	516.6	1335.6	3385.6	8630.6	21370.8	54210.3	136410.3	345283	92613
8300	215.7	522.9	1351.9	3426.9	8735.9	21631.1	54870.6	138070.6	349483	93743
8400	218.3	529.2	1368.2	3468.2	8841.2	21891.4	55530.9	139730.9	353683	94873
8500	220.9	535.5	1384.5	3509.5	8946.5	22151.7	56191.2	141391.2	357883	96003
8600	223.5	541.8	1400.8	3550.8	9051.8	22412.0	56851.5	143051.5	362083	97133
8700	226.1	548.1	1417.1	3592.1	9157.1	22672.3	57511.8	144711.8	366283	98263
8800	228.7	554.4	1433.4	3633.4	9262.4	22932.6	58172.1	146372.1	370483	99393
8900	231.3	560.7	1449.7	3674.7	9367.7	23192.9	58832.4	148032.4	374683	100523
9000	233.9	567.0	1466.0	3716.0	9473.0	23453.2	59492.7	149692.7	378883	101

SYMBOL	AMENDMENTS	DATE
D.C. 01-121-1 (2)		
D.C. 01-121-1 (3)		
D.C. 01-121-1 (4)		
D.C. 01-121-1 (5)		
D.C. 01-121-1 (6)		
D.C. 01-121-1 (7)		
D.C. 01-121-1 (8)		
D.C. 01-121-1 (9)		
D.C. 01-121-1 (10)		

FOR EXPLANATION OF DIMENSIONS ETC. SEE DRAWING NOTES.	APPROVED
THIS DRAWING IS THE PROPERTY OF THE DRAWING OFFICE AND IS NOT TO BE REPRODUCED OR COPIED IN ANY MANNER WITHOUT THE WRITTEN PERMISSION OF THE DRAWING OFFICE.	DATE: 11/18/81
MATERIAL SPECIFICATION: ALUMINUM 12.75/316-H	SCALE: 1:1
FINISH: ANODISED (S1, S2, S3, S4, S5, S6, S7, S8, S9, S10, S11, S12, S13, S14, S15, S16, S17, S18, S19, S20, S21, S22, S23, S24, S25, S26, S27, S28, S29, S30, S31, S32, S33, S34, S35, S36, S37, S38, S39, S40, S41, S42, S43, S44, S45, S46, S47, S48, S49, S50, S51, S52, S53, S54, S55, S56, S57, S58, S59, S60, S61, S62, S63, S64, S65, S66, S67, S68, S69, S70, S71, S72, S73, S74, S75, S76, S77, S78, S79, S80, S81, S82, S83, S84, S85, S86, S87, S88, S89, S90, S91, S92, S93, S94, S95, S96, S97, S98, S99, S100)	DRG. NO. IRDE III/6



NOTES

- LARGE GRADUATION LINES TO BE 5 HIGH X 0.2 THICK.
- SMALL GRADUATION LINES TO BE 3 HIGH X 0.2 THICK.
- FIGURES AS SHOWN IN THE DRAWING.
- GAP BETWEEN LARGE GRADUATIONS AND FIGURES TO BE 1 CENTRALLY AND HEIGHT OF THESE FIGURES AND LETTERS TO BE AS FOLLOWS:
 - 0 10 20 30 40 50 60 70 80 90 100 110 120 130 140 150 160 170 180 190 200 210 220 230 240 250 260 270 280 290 300 310 320 330 340 350 360 370 380 390 400 410 420 430 440 450 460 470 480 490 500 510 520 530 540 550 560 570 580 590 600 610 620 630 640 650 660 670 680 690 700 710 720 730 740 750 760 770 780 790 800 810 820 830 840 850 860 870 880 890 900 910 920 930 940 950 960 970 980 990 1000
- LOW ANGLE, WIND STRIP, RT NO. 10-R 50(1)
- DIMENSIONS NOT INDICATED IN THE REVERSE PLAN ARE TO BE SIMILAR TO THOSE AS INDICATED IN THE PLAN VIEW.
- SCALES TO BE PHOTO PRINTED ETCHED IN BLACK ON ANODISED ALUMINUM SHEET.
- SCALE TO BE NEATLY CUT, FINISHED SMOOTH, FREE FROM SCRATCHES AND MUST BE STRAIGHT.
- SCREENCODE PATCH CAN BE PROCESSED BY SCREEN PRINTING AS AN ALTERNATIVE PROCESS PROVIDED IT IS ADHERED TO ANODISED SURFACE AFTER PROPER BACKING.

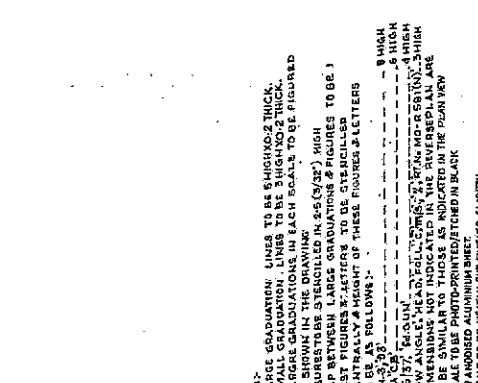
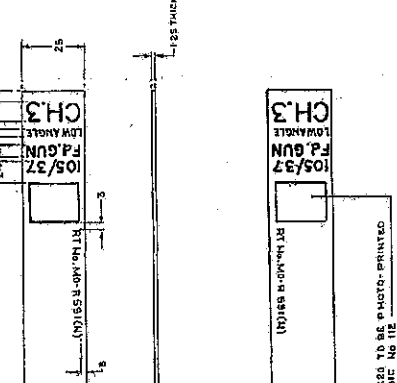
WIND STRIP	LINE 03	LINE 02	LINE 01	LINE 04
0	0	0	0	0
5	19.6	30.1	37.6	34.7
10	39.2	60.2	75.2	69.4
15	58.8	90.3	112.8	104.1
20	78.4	120.4	150.4	138.8
25	98.0	150.5	188.0	173.5
30	117.6	180.6	225.6	208.2
35	137.2	210.7	263.2	242.9
40	156.8	240.8	300.8	277.6
45	176.4	270.9	338.4	312.3
50	196.0	301.0	376.0	347.0
55	215.6	331.1	413.6	381.7
60	235.2	361.2	451.2	416.4
65	254.8	391.3	488.8	451.1
70	274.4	421.4	526.4	485.8
75	294.0	451.5	564.0	520.5
80	313.6	481.6	601.6	555.2
85	333.2	511.7	639.2	589.9
90	352.8	541.8	676.8	624.6
95	372.4	571.9	714.4	659.3
100	392.0	602.0	752.0	694.0

WIND STRIP	LINE 03	LINE 02	LINE 01	LINE 04
0	0	0	0	0
5	19.6	30.1	37.6	34.7
10	39.2	60.2	75.2	69.4
15	58.8	90.3	112.8	104.1
20	78.4	120.4	150.4	138.8
25	98.0	150.5	188.0	173.5
30	117.6	180.6	225.6	208.2
35	137.2	210.7	263.2	242.9
40	156.8	240.8	300.8	277.6
45	176.4	270.9	338.4	312.3
50	196.0	301.0	376.0	347.0
55	215.6	331.1	413.6	381.7
60	235.2	361.2	451.2	416.4
65	254.8	391.3	488.8	451.1
70	274.4	421.4	526.4	485.8
75	294.0	451.5	564.0	520.5
80	313.6	481.6	601.6	555.2
85	333.2	511.7	639.2	589.9
90	352.8	541.8	676.8	624.6
95	372.4	571.9	714.4	659.3
100	392.0	602.0	752.0	694.0

FOR TRADE ONLY
DATE OF ISSUE 28/12/81
10/10/81

ITEM NO.	DESCRIPTION	QUANTITY	UNIT
101	ALUMINUM SHEET 1/8" THICK	100	SQ. FT.
102	ALUMINUM SHEET 1/4" THICK	100	SQ. FT.
103	ALUMINUM SHEET 1/2" THICK	100	SQ. FT.
104	ALUMINUM SHEET 3/4" THICK	100	SQ. FT.
105	ALUMINUM SHEET 1" THICK	100	SQ. FT.

REVISION	DATE	DESCRIPTION
1	10/10/20	INITIAL DESIGN
2	10/15/20	REVISED FOR MANUFACTURE
3	10/20/20	FINAL APPROVAL



COLOR CODE PATCHES TO BE PHOTO-PRINTED IN ANODIC BLUE, ES:281C NO 112

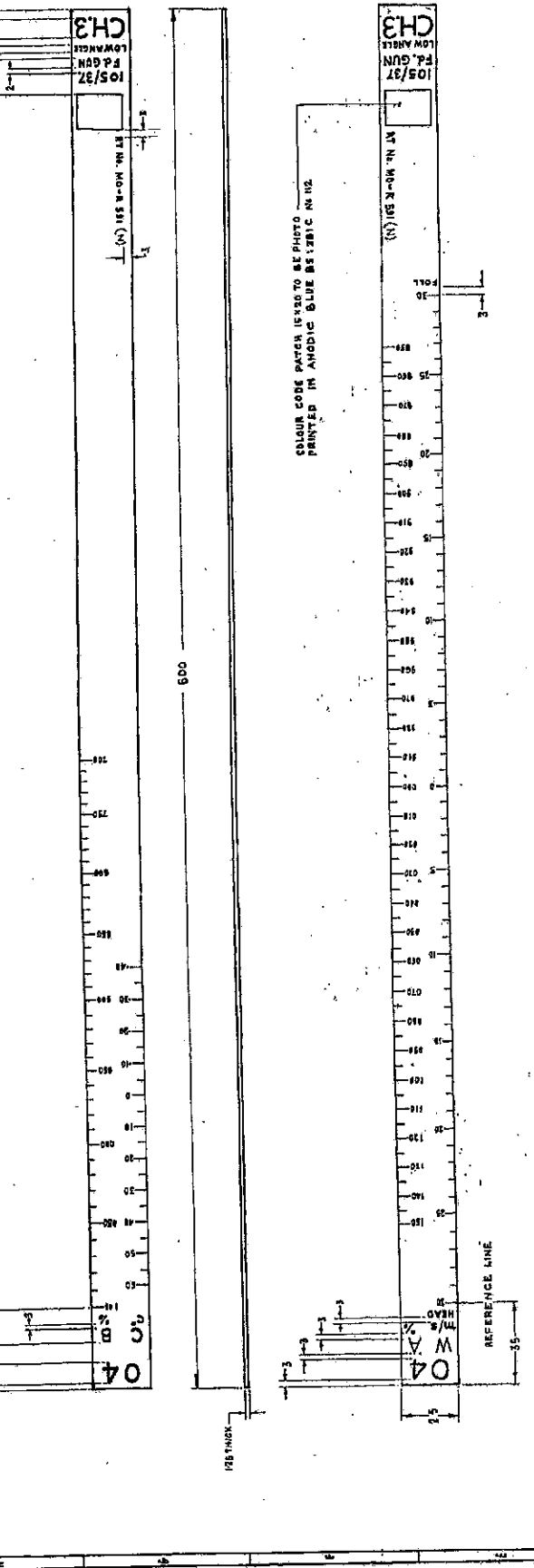
SCALE 'A'	DISTANCE 'A'	SCALE 'B'	DISTANCE 'B'	SCALE 'C'	DISTANCE 'C'	SCALE 'D'	DISTANCE 'D'
100	11.3	50	3.0	10	0.3	5	0.15
125	14.1	62.5	3.75	12.5	0.375	6.25	0.1875
150	16.9	75	4.5	15	0.45	7.5	0.225
175	19.7	87.5	5.25	17.5	0.525	8.75	0.2625
200	22.5	100	6.0	20	0.6	10	0.3
225	25.3	112.5	6.75	22.5	0.675	11.25	0.3375
250	28.1	125	7.5	25	0.75	12.5	0.375
275	30.9	137.5	8.25	27.5	0.825	13.75	0.4125
300	33.7	150	9.0	30	0.9	15	0.45
325	36.5	162.5	9.75	32.5	0.975	16.25	0.4875
350	39.3	175	10.5	35	1.05	17.5	0.525
375	42.1	187.5	11.25	37.5	1.125	18.75	0.5625
400	44.9	200	12.0	40	1.2	20	0.6
425	47.7	212.5	12.75	42.5	1.275	21.25	0.6375
450	50.5	225	13.5	45	1.35	22.5	0.675
475	53.3	237.5	14.25	47.5	1.425	23.75	0.7125
500	56.1	250	15.0	50	1.5	25	0.75
525	58.9	262.5	15.75	52.5	1.575	26.25	0.7875
550	61.7	275	16.5	55	1.65	27.5	0.825
575	64.5	287.5	17.25	57.5	1.725	28.75	0.8625
600	67.3	300	18.0	60	1.8	30	0.9
625	70.1	312.5	18.75	62.5	1.875	31.25	0.9375
650	72.9	325	19.5	65	1.95	32.5	0.975
675	75.7	337.5	20.25	67.5	2.025	33.75	1.0125
700	78.5	350	21.0	70	2.1	35	1.05
725	81.3	362.5	21.75	72.5	2.175	36.25	1.0875
750	84.1	375	22.5	75	2.25	37.5	1.125
775	86.9	387.5	23.25	77.5	2.325	38.75	1.1625
800	89.7	400	24.0	80	2.4	40	1.2
825	92.5	412.5	24.75	82.5	2.475	41.25	1.2375
850	95.3	425	25.5	85	2.55	42.5	1.275
875	98.1	437.5	26.25	87.5	2.625	43.75	1.3125
900	100.9	450	27.0	90	2.7	45	1.35
925	103.7	462.5	27.75	92.5	2.775	46.25	1.3875
950	106.5	475	28.5	95	2.85	47.5	1.425
975	109.3	487.5	29.25	97.5	2.925	48.75	1.4625
1000	112.1	500	30.0	100	3.0	50	1.5
1025	114.9	512.5	30.75	102.5	3.075	51.25	1.5375
1050	117.7	525	31.5	105	3.15	52.5	1.575
1075	120.5	537.5	32.25	107.5	3.225	53.75	1.6125
1100	123.3	550	33.0	110	3.3	55	1.65
1125	126.1	562.5	33.75	112.5	3.375	56.25	1.6875
1150	128.9	575	34.5	115	3.45	57.5	1.725
1175	131.7	587.5	35.25	117.5	3.525	58.75	1.7625
1200	134.5	600	36.0	120	3.6	60	1.8
1225	137.3	612.5	36.75	122.5	3.675	61.25	1.8375
1250	140.1	625	37.5	125	3.75	62.5	1.875
1275	142.9	637.5	38.25	127.5	3.825	63.75	1.9125
1300	145.7	650	39.0	130	3.9	65	1.95
1325	148.5	662.5	39.75	132.5	3.975	66.25	1.9875
1350	151.3	675	40.5	135	4.05	67.5	2.025
1375	154.1	687.5	41.25	137.5	4.125	68.75	2.0625
1400	156.9	700	42.0	140	4.2	70	2.1
1425	159.7	712.5	42.75	142.5	4.275	71.25	2.1375
1450	162.5	725	43.5	145	4.35	72.5	2.175
1475	165.3	737.5	44.25	147.5	4.425	73.75	2.2125
1500	168.1	750	45.0	150	4.5	75	2.25
1525	170.9	762.5	45.75	152.5	4.575	76.25	2.2875
1550	173.7	775	46.5	155	4.65	77.5	2.325
1575	176.5	787.5	47.25	157.5	4.725	78.75	2.3625
1600	179.3	800	48.0	160	4.8	80	2.4
1625	182.1	812.5	48.75	162.5	4.875	81.25	2.4375
1650	184.9	825	49.5	165	4.95	82.5	2.475
1675	187.7	837.5	50.25	167.5	5.025	83.75	2.5125
1700	190.5	850	51.0	170	5.1	85	2.55
1725	193.3	862.5	51.75	172.5	5.175	86.25	2.5875
1750	196.1	875	52.5	175	5.25	87.5	2.625
1775	198.9	887.5	53.25	177.5	5.325	88.75	2.6625
1800	201.7	900	54.0	180	5.4	90	2.7
1825	204.5	912.5	54.75	182.5	5.475	91.25	2.7375
1850	207.3	925	55.5	185	5.55	92.5	2.775
1875	210.1	937.5	56.25	187.5	5.625	93.75	2.8125
1900	212.9	950	57.0	190	5.7	95	2.85
1925	215.7	962.5	57.75	192.5	5.775	96.25	2.8875
1950	218.5	975	58.5	195	5.85	97.5	2.925
1975	221.3	987.5	59.25	197.5	5.925	98.75	2.9625
2000	224.1	1000	60.0	200	6.0	100	3.0

NOTES:
 LARGE GRADUATION LINES TO BE HIGHX0.2 THICK.
 SMALL GRADUATION LINES TO BE HIGHX0.2 THICK.
 LARGER GRADUATIONS IN EACH SCALE TO BE FIGURED.
 AS SHOWN IN THE DRAWING. (E.G. 100, 200, 300, 400, 500, 600, 700, 800, 900, 1000)
 GAP BETWEEN LARGE GRADUATIONS & FIGURES TO BE 1/2 THE HEIGHT OF THE FIGURE LETTERS.
 CENTRALLY A HEIGHT OF THESE FIGURE LETTERS TO BE AS FOLLOWS:
 1000 - 1.5 HIGH
 900 - 1.4 HIGH
 800 - 1.3 HIGH
 700 - 1.2 HIGH
 600 - 1.1 HIGH
 500 - 1.0 HIGH
 400 - 0.9 HIGH
 300 - 0.8 HIGH
 200 - 0.7 HIGH
 100 - 0.6 HIGH
 LOW ANGLE HEAD SHALL BE 1/8" HIGH FROM THE PLAN VIEW TO BE SIMILAR TO THOSE AS INDICATED IN THE PLAN VIEW.
 SCALE TO BE PHOTO-PRINTED/ETCHED IN BLACK ON ANODIZED ALUMINUM SHEET.
 SURFACE TO BE KEATY CUT/GRIND SMOOTH.
 FINISH FROM ANODIZING MUST BE STRAIGHT.
 COLOR CODE PATCH CAN BE PROCESSED BY GREEN PRINTING AS MAINTENANCE PERSONNEL PROVIDED IT'S ADHERED TO ANODIZED SURFACE AFTER PROPER BAKING.

1000 WADE OTH
 DATE OF 18000 22/12/19
 18/10/20
 10/10/20

SCALE, GRAPHICAL FIRING, RANGE CH-3 MET 03

DATE	10/18/82	BY	W.A.
SCALE	1:1	DATE	10/18/82
PROJECT	IRDE III/9	SCALE	1:1
REV.	01	DATE	10/18/82
REV.	02	DATE	10/18/82
REV.	03	DATE	10/18/82
REV.	04	DATE	10/18/82
REV.	05	DATE	10/18/82
REV.	06	DATE	10/18/82
REV.	07	DATE	10/18/82
REV.	08	DATE	10/18/82
REV.	09	DATE	10/18/82
REV.	10	DATE	10/18/82
REV.	11	DATE	10/18/82
REV.	12	DATE	10/18/82
REV.	13	DATE	10/18/82
REV.	14	DATE	10/18/82
REV.	15	DATE	10/18/82
REV.	16	DATE	10/18/82
REV.	17	DATE	10/18/82
REV.	18	DATE	10/18/82
REV.	19	DATE	10/18/82
REV.	20	DATE	10/18/82
REV.	21	DATE	10/18/82
REV.	22	DATE	10/18/82
REV.	23	DATE	10/18/82
REV.	24	DATE	10/18/82
REV.	25	DATE	10/18/82
REV.	26	DATE	10/18/82
REV.	27	DATE	10/18/82
REV.	28	DATE	10/18/82
REV.	29	DATE	10/18/82
REV.	30	DATE	10/18/82



COLOUR CODE PATCH LEADS TO BE PRINTED IN ANODIC BLUE BS 1781 C IN 102

105/37 FLD GUN
CH3
LOW ANGLE

105/37 FLD GUN
CH3
LOW ANGLE

125 THICK

REFERENCE LINE

REFERENCE LINE

NOTES:-

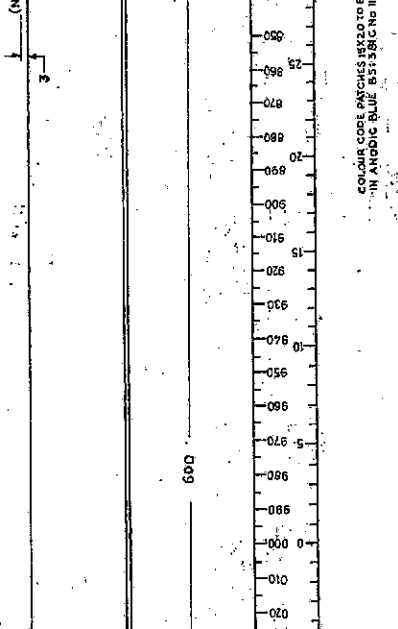
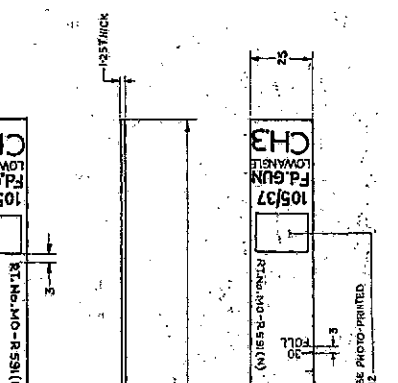
- LARGE GRADUATION LINES TO BE 5 HIGHER THAN THICK SMALL GRADUATION LINES TO BE 3 HIGHER THAN THICK LARGE GRADUATIONS IN EACH SCALE TO BE FIGURED AS SHOWN IN THE DRAWING.
- GAP BETWEEN LARGE GRADUATIONS AND FIGURES TO BE 1 CENTRALLY AND HEIGHT OF THESE FIGURES AND LETTERS TO BE AS FOLLOWS:
 - 0.4" HIGH
 - 0.2" HIGH
 - 0.1" HIGH
 - 0.05" HIGH
- LOW ANGLE HEAD FOLLOWS THE HEAD OF THE HIGH DIMENSIONS BUT INDICATED IN THE REVERSE PLAN ARE TO BE SIMILAR TO THOSE AS INDICATED IN THE MAIN VIEW.
- SCALE TO BE NEATLY CUT, FINISHED, SMOOTH, FREE FROM SCRATCHES AND MUST BE STRAIGHT.
- COLOUR CODE PATCH CAN BE PROCESSED BY SCREEN PRINTING AS AN ALTERNATIVE PROCESS PROVIDED IT IS ANODISED TO ANODISED SURFACE AFTER PROPER BAKING.

SCALE	SCALE IN INCHES	SCALE IN MILLIMETERS
0.4	100	25.4
0.4	200	50.8
0.4	300	76.2
0.4	400	101.6
0.4	500	127.0
0.4	600	152.4
0.4	700	177.8
0.4	800	203.2
0.4	900	228.6
0.4	1000	254.0

FOR TRADE ONLY
Date of Issue: 23/12/79
10/18/82

SUMMARY	AMENDMENTS	ISSUE NO.	DATE
10	1. DIMENSIONS TO BE PRINTED IN BLACK. 2. ALL DIMENSIONS TO BE PRINTED IN BLACK. 3. ALL DIMENSIONS TO BE PRINTED IN BLACK. 4. ALL DIMENSIONS TO BE PRINTED IN BLACK. 5. ALL DIMENSIONS TO BE PRINTED IN BLACK.	1	10/10/18
11	1. DIMENSIONS TO BE PRINTED IN BLACK. 2. ALL DIMENSIONS TO BE PRINTED IN BLACK. 3. ALL DIMENSIONS TO BE PRINTED IN BLACK. 4. ALL DIMENSIONS TO BE PRINTED IN BLACK. 5. ALL DIMENSIONS TO BE PRINTED IN BLACK.	2	10/10/18
12	1. DIMENSIONS TO BE PRINTED IN BLACK. 2. ALL DIMENSIONS TO BE PRINTED IN BLACK. 3. ALL DIMENSIONS TO BE PRINTED IN BLACK. 4. ALL DIMENSIONS TO BE PRINTED IN BLACK. 5. ALL DIMENSIONS TO BE PRINTED IN BLACK.	3	10/10/18
13	1. DIMENSIONS TO BE PRINTED IN BLACK. 2. ALL DIMENSIONS TO BE PRINTED IN BLACK. 3. ALL DIMENSIONS TO BE PRINTED IN BLACK. 4. ALL DIMENSIONS TO BE PRINTED IN BLACK. 5. ALL DIMENSIONS TO BE PRINTED IN BLACK.	4	10/10/18

FOR EXPLANATION OF DIMENSIONING ETC.	DRN.	APPROVED
THIS DRAWING IS TO BE USED FOR THE CONSTRUCTION OF THE RANGE CH.3 MET. 05	1000	10/10/18
DIMENSIONS ARE IN MILLIMETRES	1000	10/10/18
DATE: 10/10/18		



COLOR CODE PATCHES 15X20 TO BE PHOTO-PRINTED IN ANODIC BLUE B51381C N2

SCALE 'A'	SCALE 'B'	SCALE 'C'	SCALE 'D'	SCALE 'E'	SCALE 'F'	SCALE 'G'	SCALE 'H'	SCALE 'I'	SCALE 'J'	SCALE 'K'	SCALE 'L'	SCALE 'M'	SCALE 'N'	SCALE 'O'	SCALE 'P'	SCALE 'Q'	SCALE 'R'	SCALE 'S'	SCALE 'T'	SCALE 'U'	SCALE 'V'	SCALE 'W'	SCALE 'X'	SCALE 'Y'	SCALE 'Z'
150	150	150	150	150	150	150	150	150	150	150	150	150	150	150	150	150	150	150	150	150	150	150	150	150	150

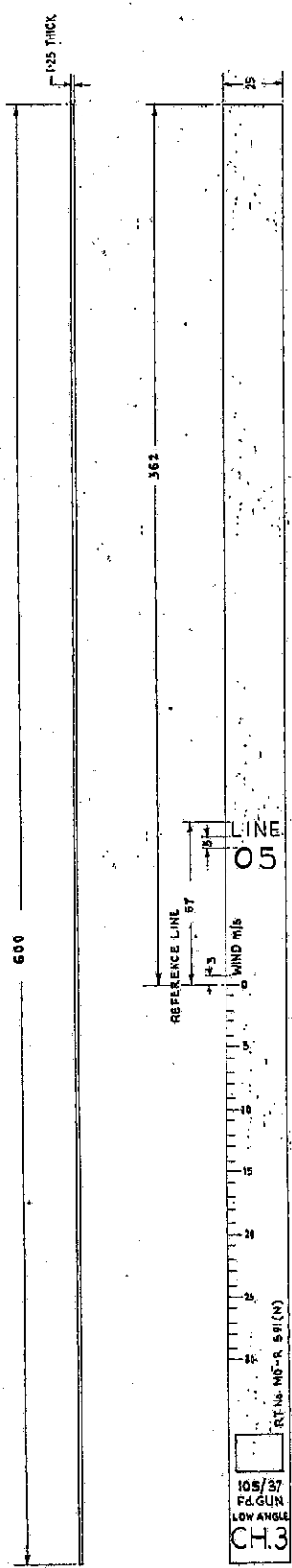
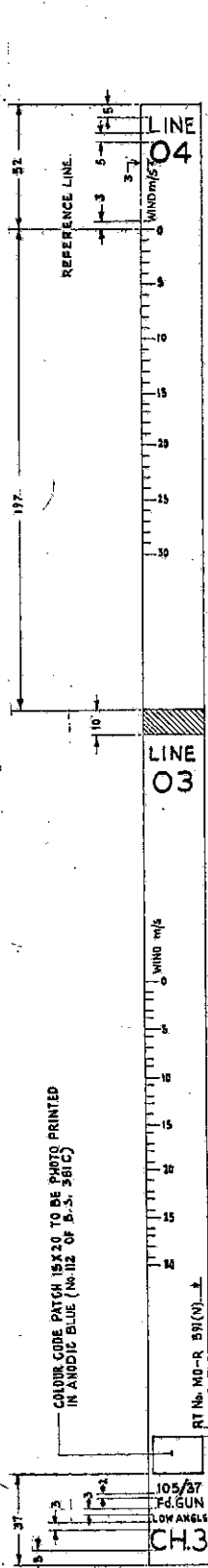
NOTES:
 1. LARGE GRADUATION LINES TO BE 5 HIGH 40.2 THICK.
 2. SMALL GRADUATION LINES TO BE 3 HIGH 40.2 THICK.
 3. LARGE GRADUATION IN EACH SCALE TO BE FIGURED.
 4. FIGURES TO BE STENCILED IN 2.51 (3/2) HIGH.
 5. GAP BETWEEN LARGE GRADUATIONS AND FIGURES TO BE 1.
 6. REST FIGURES AND LETTERS TO BE STENCILED CENTRALLY AND HEIGHT OF THESE FIGURES AND LETTERS TO BE AS FOLLOWS:-
 7. 'A' TO 'Z' 8 HIGH.
 8. '0' TO '9' 8 HIGH.
 9. '105/37' & 'FD GUN' 12 HIGH.
 10. 'LOW ANGLE' 12 HIGH.
 11. 'R.L. No. 10-A-R-551(N)' 12 HIGH.
 12. '1:357' 12 HIGH.
 13. 'FOLL' 12 HIGH.
 14. 'CH3' 12 HIGH.
 15. ALL DIMENSIONS TO BE PRINTED IN BLACK.
 16. ALL DIMENSIONS TO BE PRINTED IN BLACK.
 17. ALL DIMENSIONS TO BE PRINTED IN BLACK.
 18. ALL DIMENSIONS TO BE PRINTED IN BLACK.
 19. ALL DIMENSIONS TO BE PRINTED IN BLACK.
 20. ALL DIMENSIONS TO BE PRINTED IN BLACK.
 21. ALL DIMENSIONS TO BE PRINTED IN BLACK.
 22. ALL DIMENSIONS TO BE PRINTED IN BLACK.
 23. ALL DIMENSIONS TO BE PRINTED IN BLACK.
 24. ALL DIMENSIONS TO BE PRINTED IN BLACK.
 25. ALL DIMENSIONS TO BE PRINTED IN BLACK.
 26. ALL DIMENSIONS TO BE PRINTED IN BLACK.
 27. ALL DIMENSIONS TO BE PRINTED IN BLACK.
 28. ALL DIMENSIONS TO BE PRINTED IN BLACK.
 29. ALL DIMENSIONS TO BE PRINTED IN BLACK.
 30. ALL DIMENSIONS TO BE PRINTED IN BLACK.
 31. ALL DIMENSIONS TO BE PRINTED IN BLACK.
 32. ALL DIMENSIONS TO BE PRINTED IN BLACK.
 33. ALL DIMENSIONS TO BE PRINTED IN BLACK.
 34. ALL DIMENSIONS TO BE PRINTED IN BLACK.
 35. ALL DIMENSIONS TO BE PRINTED IN BLACK.
 36. ALL DIMENSIONS TO BE PRINTED IN BLACK.
 37. ALL DIMENSIONS TO BE PRINTED IN BLACK.
 38. ALL DIMENSIONS TO BE PRINTED IN BLACK.
 39. ALL DIMENSIONS TO BE PRINTED IN BLACK.
 40. ALL DIMENSIONS TO BE PRINTED IN BLACK.
 41. ALL DIMENSIONS TO BE PRINTED IN BLACK.
 42. ALL DIMENSIONS TO BE PRINTED IN BLACK.
 43. ALL DIMENSIONS TO BE PRINTED IN BLACK.
 44. ALL DIMENSIONS TO BE PRINTED IN BLACK.
 45. ALL DIMENSIONS TO BE PRINTED IN BLACK.
 46. ALL DIMENSIONS TO BE PRINTED IN BLACK.
 47. ALL DIMENSIONS TO BE PRINTED IN BLACK.
 48. ALL DIMENSIONS TO BE PRINTED IN BLACK.
 49. ALL DIMENSIONS TO BE PRINTED IN BLACK.
 50. ALL DIMENSIONS TO BE PRINTED IN BLACK.
 51. ALL DIMENSIONS TO BE PRINTED IN BLACK.
 52. ALL DIMENSIONS TO BE PRINTED IN BLACK.
 53. ALL DIMENSIONS TO BE PRINTED IN BLACK.
 54. ALL DIMENSIONS TO BE PRINTED IN BLACK.
 55. ALL DIMENSIONS TO BE PRINTED IN BLACK.
 56. ALL DIMENSIONS TO BE PRINTED IN BLACK.
 57. ALL DIMENSIONS TO BE PRINTED IN BLACK.
 58. ALL DIMENSIONS TO BE PRINTED IN BLACK.
 59. ALL DIMENSIONS TO BE PRINTED IN BLACK.
 60. ALL DIMENSIONS TO BE PRINTED IN BLACK.
 61. ALL DIMENSIONS TO BE PRINTED IN BLACK.
 62. ALL DIMENSIONS TO BE PRINTED IN BLACK.
 63. ALL DIMENSIONS TO BE PRINTED IN BLACK.
 64. ALL DIMENSIONS TO BE PRINTED IN BLACK.
 65. ALL DIMENSIONS TO BE PRINTED IN BLACK.
 66. ALL DIMENSIONS TO BE PRINTED IN BLACK.
 67. ALL DIMENSIONS TO BE PRINTED IN BLACK.
 68. ALL DIMENSIONS TO BE PRINTED IN BLACK.
 69. ALL DIMENSIONS TO BE PRINTED IN BLACK.
 70. ALL DIMENSIONS TO BE PRINTED IN BLACK.
 71. ALL DIMENSIONS TO BE PRINTED IN BLACK.
 72. ALL DIMENSIONS TO BE PRINTED IN BLACK.
 73. ALL DIMENSIONS TO BE PRINTED IN BLACK.
 74. ALL DIMENSIONS TO BE PRINTED IN BLACK.
 75. ALL DIMENSIONS TO BE PRINTED IN BLACK.
 76. ALL DIMENSIONS TO BE PRINTED IN BLACK.
 77. ALL DIMENSIONS TO BE PRINTED IN BLACK.
 78. ALL DIMENSIONS TO BE PRINTED IN BLACK.
 79. ALL DIMENSIONS TO BE PRINTED IN BLACK.
 80. ALL DIMENSIONS TO BE PRINTED IN BLACK.
 81. ALL DIMENSIONS TO BE PRINTED IN BLACK.
 82. ALL DIMENSIONS TO BE PRINTED IN BLACK.
 83. ALL DIMENSIONS TO BE PRINTED IN BLACK.
 84. ALL DIMENSIONS TO BE PRINTED IN BLACK.
 85. ALL DIMENSIONS TO BE PRINTED IN BLACK.
 86. ALL DIMENSIONS TO BE PRINTED IN BLACK.
 87. ALL DIMENSIONS TO BE PRINTED IN BLACK.
 88. ALL DIMENSIONS TO BE PRINTED IN BLACK.
 89. ALL DIMENSIONS TO BE PRINTED IN BLACK.
 90. ALL DIMENSIONS TO BE PRINTED IN BLACK.
 91. ALL DIMENSIONS TO BE PRINTED IN BLACK.
 92. ALL DIMENSIONS TO BE PRINTED IN BLACK.
 93. ALL DIMENSIONS TO BE PRINTED IN BLACK.
 94. ALL DIMENSIONS TO BE PRINTED IN BLACK.
 95. ALL DIMENSIONS TO BE PRINTED IN BLACK.
 96. ALL DIMENSIONS TO BE PRINTED IN BLACK.
 97. ALL DIMENSIONS TO BE PRINTED IN BLACK.
 98. ALL DIMENSIONS TO BE PRINTED IN BLACK.
 99. ALL DIMENSIONS TO BE PRINTED IN BLACK.
 100. ALL DIMENSIONS TO BE PRINTED IN BLACK.

FOR EXPLANATION OF DIMENSIONING ETC. THIS DRAWING IS TO BE USED FOR THE CONSTRUCTION OF THE RANGE CH.3 MET. 05 DIMENSIONS ARE IN MILLIMETRES DATE: 10/10/18

SCALE, GRAPHICAL FIRING, RANGE CH.3, MET. 05

10/10/18

SYD CODE	AMENDMENTS	DATE	BY
01	REVISION 12/19/80		
02	REVISION 12/19/80		
03	REVISION 12/19/80		
04	REVISION 12/19/80		
05	REVISION 12/19/80		



COLOUR CODE PATCH 15X20 TO BE PHOTO PRINTED IN ANODIC BLUE (IN 112 OF S.S. 581C)

RT No. MD-R. 591(N) 1.3

105/37 FG GUN LOW ANGLE CH.3

105/37 FG GUN LOW ANGLE CH.3

RT No. MD-R. 591(N)

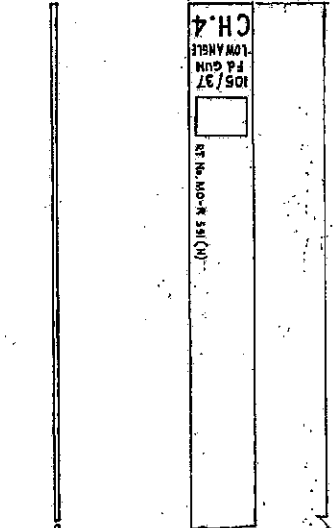
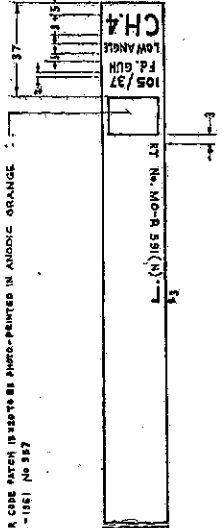
WIND mph	LINE 05
0	0.0
5	4.5
10	10.6
15	19.1
20	25.6
25	30.1
30	38.2
35	40.7
40	46.7
45	51.5
50	55.8
55	61.8
60	66.3
65	72.4
70	76.9
75	81.4
80	87.4
85	92.0
90	98.0
95	102.5
100	107.0
105	113.1
110	117.6
115	123.6
120	128.1
125	132.7
130	138.7
135	143.2
140	149.2
145	153.8
150	159.8

WIND mph	LINE 04
0	0.0
5	4.5
10	10.6
15	19.1
20	25.6
25	30.1
30	38.2
35	40.7
40	46.7
45	51.5
50	55.8
55	61.8
60	66.3
65	72.4
70	76.9
75	81.4
80	87.4
85	92.0
90	98.0
95	102.5
100	107.0
105	113.1
110	117.6
115	123.6
120	128.1
125	132.7
130	138.7
135	143.2
140	149.2
145	153.8
150	159.8

NOTES:-
 LARGE GRADUATION LINES TO BE 5 HIGH X0.2 THICK.
 SMALL GRADUATION LINES TO BE 3 HIGH X0.2 THICK.
 LARGE GRADUATIONS IN EACH SCALE TO BE FIGURED AS SHOWN IN THE DRAWING
 FIGURES TO BE STENCILED IN 2.5(3/16) HIGH.
 GAP BETWEEN LARGE GRADUATIONS AND FIGURES TO BE 1
 BEST FIGURES AND CHARACTERS TO BE STENCILED CENTRALLY AND
 HEIGHT OF THESE FIGURES AND LETTERS TO BE AS FOLLOWS:-
 CH.3, '93', '04', '05' --- 8 HIGH
 '105/37' --- 8 HIGH
 'FG GUN' --- 8 HIGH
 'LOW ANGLE' --- 5 HIGH
 'RT No. MD-R. 591(N)' --- 5 HIGH
 DIMENSIONS NOT INDICATED IN THE REVERSE PLAN ARE TO BE SIMILAR
 TO THOSE AS INDICATED IN THE PLAN VIEW.
 SCALES TO BE PHOTO PRINTED/ETCHED IN BLACK ON ANODISED ALUMINIUM SHEET.
 SCALE TO BE NEATLY CUT, FINISHED SMOOTH, FREE FROM SCRATCHES
 AND MUST BE STRAIGHT.
 COLOUR CODE PATCH CAN BE PROCESSED BY SCREEN PRINTING AS AN ALTERNATIVE PROCESS
 PROVIDED IT IS ADHERED TO ANODISED SURFACE AFTER PROPER BACKING.

FOR LEADS ONLY
 Date of Issue 23/12/80
 12/06/2025

COLOR CODE PATCH IS TO BE PAPER-PRINTED IN ANODIC ORANGE
13.15-13.16) (N) 387



NOTES:-
 LARGE GRADUATION LINES TO BE 5 HIGH 40.2 THICK;
 SMALL GRADUATION LINES TO BE 3 HIGH 20.2 THICK.
 LARGE GRADUATIONS IN EACH SCALE TO BE FIGURED AS SHOWN IN THE DRAWING
 FIGURED TO BE STENCILED IN 25 (3/32") HIGH GAP BETWEEN LARGE GRADUATIONS AND FIGURES TO BE REST FIGURES & LETTERS TO BE STENCILED CENTRALLY AND HEIGHT OF THESE FIGURES AND LETTERS TO BE AS FOLLOWS:-
 'CH 4', '02' --- 3 HIGH
 'WA', '58' --- 3 HIGH
 '105/37', 'F.A. GUN' --- 4 HIGH
 'LOW ANGLE', 'HEAD', 'FOLL', 'C', 'WA', 'RT NO. MO-R 591(N)' --- 3 HIGH.
 DIMENSIONS NOT INDICATED IN THE REVERSE PLAN ARE TO BE SIMILAR TO THOSE AS INDICATED IN THIS PLAN.
 SCALING MUST BE PRINTED/ETCHED IN BLACK ON ANODISED ALUMINIUM SURFACE.
 SCALE TO BE NEATLY CUT, FINISHED SMOOTH, FREE FROM SCRATCHES AND MUST BE STRAIGHT.
 COLOUR CODE PATCH CAN BE PROCESSED BY SCREEN PRINTING AS AN ALTERNATIVE PROCESS PROVIDED IT IS ADHERED TO ANODISED SURFACE AFTER PROPER BAKING.

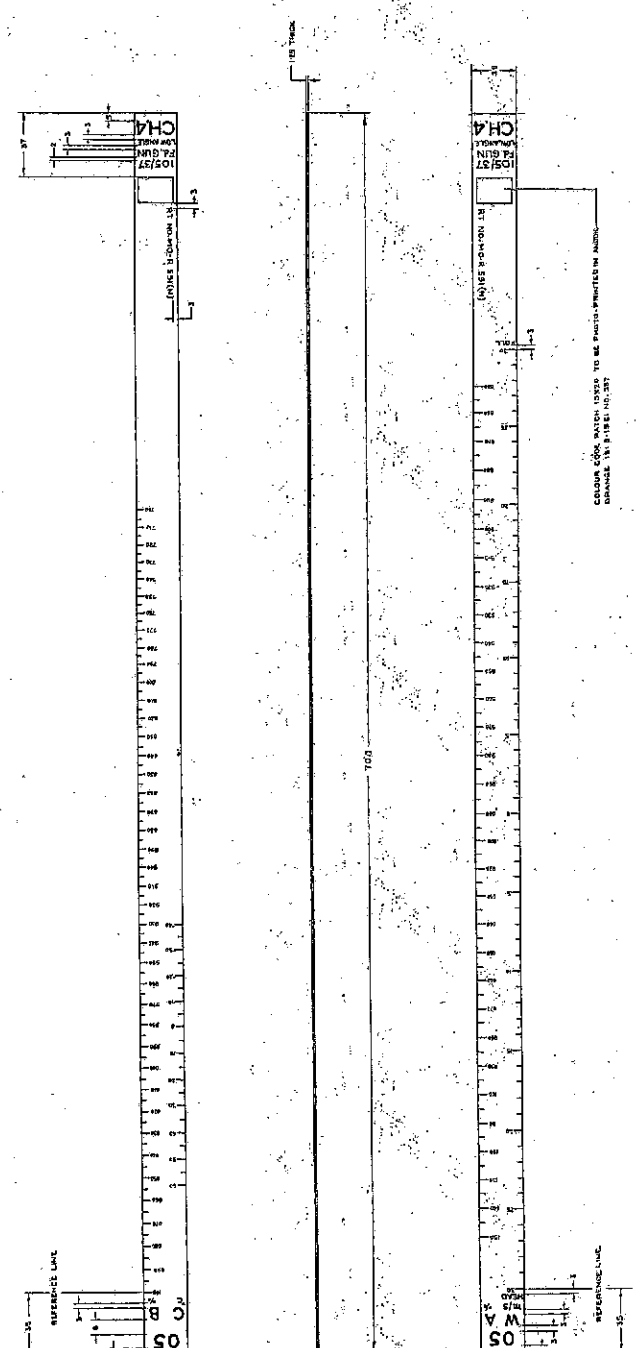
O2		O2		O2		O2	
SCALE 'O' DISTANCE OF TUBES TO BE LINES FROM MARKED REF. LINE	(FIGURES TO BE MARKED)	SCALE 'A' DISTANCE OF TUBES TO BE LINES FROM MARKED REF. LINE	(FIGURES TO BE MARKED)	SCALE 'W' DISTANCE OF TUBES TO BE LINES FROM MARKED REF. LINE	(FIGURES TO BE MARKED)	SCALE 'V' DISTANCE OF TUBES TO BE LINES FROM MARKED REF. LINE	(FIGURES TO BE MARKED)
60	12.1	150	0	30	13.3	0	11.4-5
70	17.5	48	124.5	17.2	129.1	17.2	129.1
80	22.9	120	91.5	20.6	132.1	20.6	132.1
90	28.3	180	58.5	24.4	135.7	24.4	135.7
100	33.7	240	25.5	27.7	143.8	27.7	143.8
110	39.1	300	0	31.1	147.1	31.1	147.1
120	44.5	360	0	34.7	151.0	34.7	151.0
130	49.9	420	0	41.9	155.0	41.9	155.0
140	55.3	480	0	45.5	159.0	45.5	159.0
150	60.7	540	0	49.1	163.1	49.1	163.1
160	66.1	600	0	52.8	167.3	52.8	167.3
170	71.5	660	0	56.4	171.6	56.4	171.6
180	76.9	720	0	60.0	176.0	60.0	176.0
190	82.3	780	0	63.9	180.5	63.9	180.5
200	87.7	840	0	67.5	185.1	67.5	185.1
210	93.1	900	0	71.2	189.8	71.2	189.8
220	98.5	960	0	75.1	194.6	75.1	194.6
230	103.9	1020	0	78.7	199.5	78.7	199.5
240	109.3	1080	0	82.3	204.5	82.3	204.5
250	114.7	1140	0	86.2	209.5	86.2	209.5
260	120.1	1200	0	90.1	214.6	90.1	214.6
270	125.5	1260	0	94.1	219.8	94.1	219.8
280	130.9	1320	0	98.0	225.1	98.0	225.1
290	136.3	1380	0	102.0	230.5	102.0	230.5
300	141.7	1440	0	106.0	236.0	106.0	236.0
310	147.1	1500	0	110.0	241.5	110.0	241.5
320	152.5	1560	0	114.0	247.0	114.0	247.0
330	157.9	1620	0	118.0	252.5	118.0	252.5
340	163.3	1680	0	122.0	258.0	122.0	258.0
350	168.7	1740	0	126.0	263.5	126.0	263.5
360	174.1	1800	0	130.0	269.0	130.0	269.0
370	179.5	1860	0	134.0	274.5	134.0	274.5
380	184.9	1920	0	138.0	280.0	138.0	280.0
390	190.3	1980	0	142.0	285.5	142.0	285.5
400	195.7	2040	0	146.0	291.0	146.0	291.0
410	201.1	2100	0	150.0	296.5	150.0	296.5
420	206.5	2160	0	154.0	302.0	154.0	302.0
430	211.9	2220	0	158.0	307.5	158.0	307.5
440	217.3	2280	0	162.0	313.0	162.0	313.0
450	222.7	2340	0	166.0	318.5	166.0	318.5
460	228.1	2400	0	170.0	324.0	170.0	324.0
470	233.5	2460	0	174.0	329.5	174.0	329.5
480	238.9	2520	0	178.0	335.0	178.0	335.0
490	244.3	2580	0	182.0	340.5	182.0	340.5
500	249.7	2640	0	186.0	346.0	186.0	346.0
510	255.1	2700	0	190.0	351.5	190.0	351.5
520	260.5	2760	0	194.0	357.0	194.0	357.0
530	265.9	2820	0	198.0	362.5	198.0	362.5
540	271.3	2880	0	202.0	368.0	202.0	368.0
550	276.7	2940	0	206.0	373.5	206.0	373.5
560	282.1	3000	0	210.0	379.0	210.0	379.0
570	287.5	3060	0	214.0	384.5	214.0	384.5
580	292.9	3120	0	218.0	390.0	218.0	390.0
590	298.3	3180	0	222.0	395.5	222.0	395.5
600	303.7	3240	0	226.0	401.0	226.0	401.0
610	309.1	3300	0	230.0	406.5	230.0	406.5
620	314.5	3360	0	234.0	412.0	234.0	412.0
630	319.9	3420	0	238.0	417.5	238.0	417.5
640	325.3	3480	0	242.0	423.0	242.0	423.0
650	330.7	3540	0	246.0	428.5	246.0	428.5
660	336.1	3600	0	250.0	434.0	250.0	434.0
670	341.5	3660	0	254.0	439.5	254.0	439.5
680	346.9	3720	0	258.0	445.0	258.0	445.0
690	352.3	3780	0	262.0	450.5	262.0	450.5
700	357.7	3840	0	266.0	456.0	266.0	456.0
710	363.1	3900	0	270.0	461.5	270.0	461.5
720	368.5	3960	0	274.0	467.0	274.0	467.0
730	373.9	4020	0	278.0	472.5	278.0	472.5
740	379.3	4080	0	282.0	478.0	282.0	478.0
750	384.7	4140	0	286.0	483.5	286.0	483.5
760	390.1	4200	0	290.0	489.0	290.0	489.0
770	395.5	4260	0	294.0	494.5	294.0	494.5
780	400.9	4320	0	298.0	500.0	298.0	500.0
790	406.3	4380	0	302.0	505.5	302.0	505.5
800	411.7	4440	0	306.0	511.0	306.0	511.0
810	417.1	4500	0	310.0	516.5	310.0	516.5
820	422.5	4560	0	314.0	522.0	314.0	522.0
830	427.9	4620	0	318.0	527.5	318.0	527.5
840	433.3	4680	0	322.0	533.0	322.0	533.0
850	438.7	4740	0	326.0	538.5	326.0	538.5
860	444.1	4800	0	330.0	544.0	330.0	544.0
870	449.5	4860	0	334.0	549.5	334.0	549.5
880	454.9	4920	0	338.0	555.0	338.0	555.0
890	460.3	4980	0	342.0	560.5	342.0	560.5
900	465.7	5040	0	346.0	566.0	346.0	566.0
910	471.1	5100	0	350.0	571.5	350.0	571.5
920	476.5	5160	0	354.0	577.0	354.0	577.0
930	481.9	5220	0	358.0	582.5	358.0	582.5
940	487.3	5280	0	362.0	588.0	362.0	588.0
950	492.7	5340	0	366.0	593.5	366.0	593.5
960	498.1	5400	0	370.0	599.0	370.0	599.0
970	503.5	5460	0	374.0	604.5	374.0	604.5
980	508.9	5520	0	378.0	610.0	378.0	610.0
990	514.3	5580	0	382.0	615.5	382.0	615.5
1000	519.7	5640	0	386.0	621.0	386.0	621.0

FOR TRADE ONLY
 Date of Issue 23/02/19
 18/02/2020
 10/02/2020

SCALE, GRAPHICAL, FIRING RANGE, CH-4, MET. O2

(A)

(B)



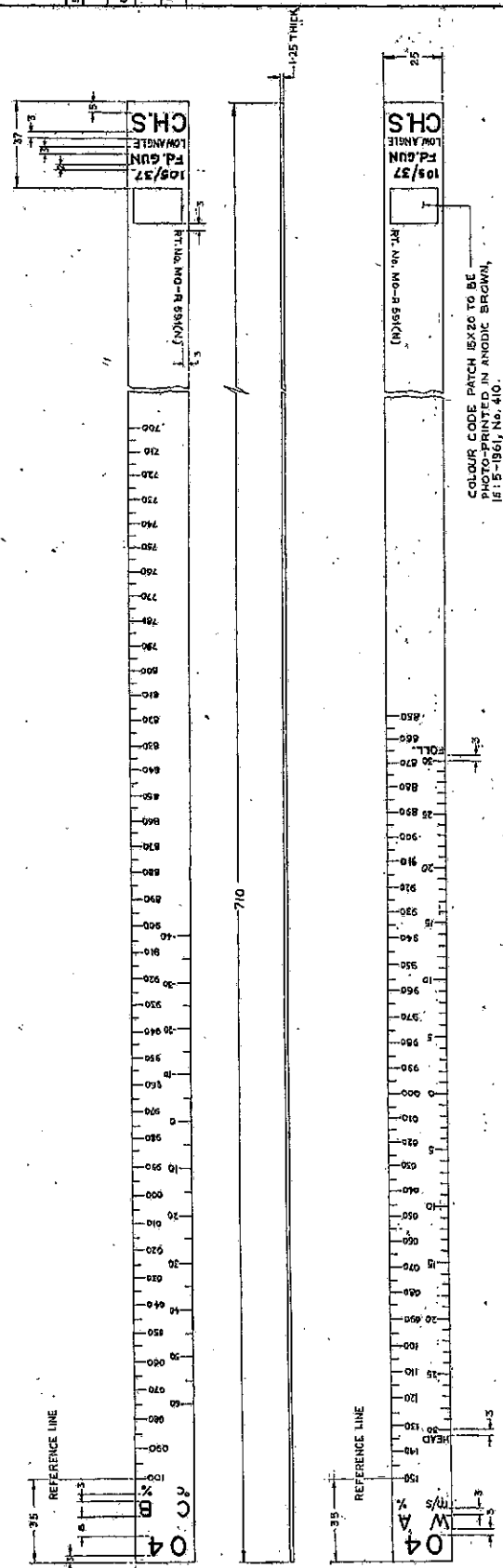
SCALE	MARKING	INCHES	MILLIMETERS
1:1	0	0	0
1:1	1	1	25.4
1:1	2	2	50.8
1:1	3	3	76.2
1:1	4	4	101.6
1:1	5	5	127.0
1:1	6	6	152.4
1:1	7	7	177.8
1:1	8	8	203.2
1:1	9	9	228.6
1:1	10	10	254.0
1:1	11	11	279.4
1:1	12	12	304.8
1:1	13	13	330.2
1:1	14	14	355.6
1:1	15	15	381.0
1:1	16	16	406.4
1:1	17	17	431.8
1:1	18	18	457.2
1:1	19	19	482.6
1:1	20	20	508.0
1:1	21	21	533.4
1:1	22	22	558.8
1:1	23	23	584.2
1:1	24	24	609.6
1:1	25	25	635.0
1:1	26	26	660.4
1:1	27	27	685.8
1:1	28	28	711.2
1:1	29	29	736.6
1:1	30	30	762.0
1:1	31	31	787.4
1:1	32	32	812.8
1:1	33	33	838.2
1:1	34	34	863.6
1:1	35	35	889.0
1:1	36	36	914.4
1:1	37	37	939.8
1:1	38	38	965.2
1:1	39	39	990.6
1:1	40	40	1016.0
1:1	41	41	1041.4
1:1	42	42	1066.8
1:1	43	43	1092.2
1:1	44	44	1117.6
1:1	45	45	1143.0
1:1	46	46	1168.4
1:1	47	47	1193.8
1:1	48	48	1219.2
1:1	49	49	1244.6
1:1	50	50	1270.0
1:1	51	51	1295.4
1:1	52	52	1320.8
1:1	53	53	1346.2
1:1	54	54	1371.6
1:1	55	55	1397.0
1:1	56	56	1422.4
1:1	57	57	1447.8
1:1	58	58	1473.2
1:1	59	59	1498.6
1:1	60	60	1524.0
1:1	61	61	1549.4
1:1	62	62	1574.8
1:1	63	63	1600.2
1:1	64	64	1625.6
1:1	65	65	1651.0
1:1	66	66	1676.4
1:1	67	67	1701.8
1:1	68	68	1727.2
1:1	69	69	1752.6
1:1	70	70	1778.0
1:1	71	71	1803.4
1:1	72	72	1828.8
1:1	73	73	1854.2
1:1	74	74	1879.6
1:1	75	75	1905.0
1:1	76	76	1930.4
1:1	77	77	1955.8
1:1	78	78	1981.2
1:1	79	79	2006.6
1:1	80	80	2032.0
1:1	81	81	2057.4
1:1	82	82	2082.8
1:1	83	83	2108.2
1:1	84	84	2133.6
1:1	85	85	2159.0
1:1	86	86	2184.4
1:1	87	87	2209.8
1:1	88	88	2235.2
1:1	89	89	2260.6
1:1	90	90	2286.0
1:1	91	91	2311.4
1:1	92	92	2336.8
1:1	93	93	2362.2
1:1	94	94	2387.6
1:1	95	95	2413.0
1:1	96	96	2438.4
1:1	97	97	2463.8
1:1	98	98	2489.2
1:1	99	99	2514.6
1:1	100	100	2540.0

NOTES:
 1. SCALE GRADUATION LINE TO BE A MINIMUM THICK.
 2. SMALL GRADUATION LINE TO BE A MINIMUM THICK.
 3. ALL GRADUATION LINES TO BE A MINIMUM THICK.
 4. ALL GRADUATION LINES TO BE A MINIMUM THICK.
 5. ALL GRADUATION LINES TO BE A MINIMUM THICK.
 6. ALL GRADUATION LINES TO BE A MINIMUM THICK.
 7. ALL GRADUATION LINES TO BE A MINIMUM THICK.
 8. ALL GRADUATION LINES TO BE A MINIMUM THICK.
 9. ALL GRADUATION LINES TO BE A MINIMUM THICK.
 10. ALL GRADUATION LINES TO BE A MINIMUM THICK.
 11. ALL GRADUATION LINES TO BE A MINIMUM THICK.
 12. ALL GRADUATION LINES TO BE A MINIMUM THICK.
 13. ALL GRADUATION LINES TO BE A MINIMUM THICK.
 14. ALL GRADUATION LINES TO BE A MINIMUM THICK.
 15. ALL GRADUATION LINES TO BE A MINIMUM THICK.
 16. ALL GRADUATION LINES TO BE A MINIMUM THICK.
 17. ALL GRADUATION LINES TO BE A MINIMUM THICK.
 18. ALL GRADUATION LINES TO BE A MINIMUM THICK.
 19. ALL GRADUATION LINES TO BE A MINIMUM THICK.
 20. ALL GRADUATION LINES TO BE A MINIMUM THICK.
 21. ALL GRADUATION LINES TO BE A MINIMUM THICK.
 22. ALL GRADUATION LINES TO BE A MINIMUM THICK.
 23. ALL GRADUATION LINES TO BE A MINIMUM THICK.
 24. ALL GRADUATION LINES TO BE A MINIMUM THICK.
 25. ALL GRADUATION LINES TO BE A MINIMUM THICK.
 26. ALL GRADUATION LINES TO BE A MINIMUM THICK.
 27. ALL GRADUATION LINES TO BE A MINIMUM THICK.
 28. ALL GRADUATION LINES TO BE A MINIMUM THICK.
 29. ALL GRADUATION LINES TO BE A MINIMUM THICK.
 30. ALL GRADUATION LINES TO BE A MINIMUM THICK.
 31. ALL GRADUATION LINES TO BE A MINIMUM THICK.
 32. ALL GRADUATION LINES TO BE A MINIMUM THICK.
 33. ALL GRADUATION LINES TO BE A MINIMUM THICK.
 34. ALL GRADUATION LINES TO BE A MINIMUM THICK.
 35. ALL GRADUATION LINES TO BE A MINIMUM THICK.
 36. ALL GRADUATION LINES TO BE A MINIMUM THICK.
 37. ALL GRADUATION LINES TO BE A MINIMUM THICK.
 38. ALL GRADUATION LINES TO BE A MINIMUM THICK.
 39. ALL GRADUATION LINES TO BE A MINIMUM THICK.
 40. ALL GRADUATION LINES TO BE A MINIMUM THICK.
 41. ALL GRADUATION LINES TO BE A MINIMUM THICK.
 42. ALL GRADUATION LINES TO BE A MINIMUM THICK.
 43. ALL GRADUATION LINES TO BE A MINIMUM THICK.
 44. ALL GRADUATION LINES TO BE A MINIMUM THICK.
 45. ALL GRADUATION LINES TO BE A MINIMUM THICK.
 46. ALL GRADUATION LINES TO BE A MINIMUM THICK.
 47. ALL GRADUATION LINES TO BE A MINIMUM THICK.
 48. ALL GRADUATION LINES TO BE A MINIMUM THICK.
 49. ALL GRADUATION LINES TO BE A MINIMUM THICK.
 50. ALL GRADUATION LINES TO BE A MINIMUM THICK.
 51. ALL GRADUATION LINES TO BE A MINIMUM THICK.
 52. ALL GRADUATION LINES TO BE A MINIMUM THICK.
 53. ALL GRADUATION LINES TO BE A MINIMUM THICK.
 54. ALL GRADUATION LINES TO BE A MINIMUM THICK.
 55. ALL GRADUATION LINES TO BE A MINIMUM THICK.
 56. ALL GRADUATION LINES TO BE A MINIMUM THICK.
 57. ALL GRADUATION LINES TO BE A MINIMUM THICK.
 58. ALL GRADUATION LINES TO BE A MINIMUM THICK.
 59. ALL GRADUATION LINES TO BE A MINIMUM THICK.
 60. ALL GRADUATION LINES TO BE A MINIMUM THICK.
 61. ALL GRADUATION LINES TO BE A MINIMUM THICK.
 62. ALL GRADUATION LINES TO BE A MINIMUM THICK.
 63. ALL GRADUATION LINES TO BE A MINIMUM THICK.
 64. ALL GRADUATION LINES TO BE A MINIMUM THICK.
 65. ALL GRADUATION LINES TO BE A MINIMUM THICK.
 66. ALL GRADUATION LINES TO BE A MINIMUM THICK.
 67. ALL GRADUATION LINES TO BE A MINIMUM THICK.
 68. ALL GRADUATION LINES TO BE A MINIMUM THICK.
 69. ALL GRADUATION LINES TO BE A MINIMUM THICK.
 70. ALL GRADUATION LINES TO BE A MINIMUM THICK.
 71. ALL GRADUATION LINES TO BE A MINIMUM THICK.
 72. ALL GRADUATION LINES TO BE A MINIMUM THICK.
 73. ALL GRADUATION LINES TO BE A MINIMUM THICK.
 74. ALL GRADUATION LINES TO BE A MINIMUM THICK.
 75. ALL GRADUATION LINES TO BE A MINIMUM THICK.
 76. ALL GRADUATION LINES TO BE A MINIMUM THICK.
 77. ALL GRADUATION LINES TO BE A MINIMUM THICK.
 78. ALL GRADUATION LINES TO BE A MINIMUM THICK.
 79. ALL GRADUATION LINES TO BE A MINIMUM THICK.
 80. ALL GRADUATION LINES TO BE A MINIMUM THICK.
 81. ALL GRADUATION LINES TO BE A MINIMUM THICK.
 82. ALL GRADUATION LINES TO BE A MINIMUM THICK.
 83. ALL GRADUATION LINES TO BE A MINIMUM THICK.
 84. ALL GRADUATION LINES TO BE A MINIMUM THICK.
 85. ALL GRADUATION LINES TO BE A MINIMUM THICK.
 86. ALL GRADUATION LINES TO BE A MINIMUM THICK.
 87. ALL GRADUATION LINES TO BE A MINIMUM THICK.
 88. ALL GRADUATION LINES TO BE A MINIMUM THICK.
 89. ALL GRADUATION LINES TO BE A MINIMUM THICK.
 90. ALL GRADUATION LINES TO BE A MINIMUM THICK.
 91. ALL GRADUATION LINES TO BE A MINIMUM THICK.
 92. ALL GRADUATION LINES TO BE A MINIMUM THICK.
 93. ALL GRADUATION LINES TO BE A MINIMUM THICK.
 94. ALL GRADUATION LINES TO BE A MINIMUM THICK.
 95. ALL GRADUATION LINES TO BE A MINIMUM THICK.
 96. ALL GRADUATION LINES TO BE A MINIMUM THICK.
 97. ALL GRADUATION LINES TO BE A MINIMUM THICK.
 98. ALL GRADUATION LINES TO BE A MINIMUM THICK.
 99. ALL GRADUATION LINES TO BE A MINIMUM THICK.
 100. ALL GRADUATION LINES TO BE A MINIMUM THICK.

FOR GRADE [Blank] 10/10/80
 DATE OF ISSUE 2/2/81
 [Signature]

DATE	AMENDMENTS	DATE	BY

DESCRIPTION OF WORK	
DATE OF SHEET	
THIRD ANGLE PROJECTION	
DIMENSIONS ARE IN MILLIMETERS	
MATL. & SPECN	
FINISH	
APPROVED BY	
DATE	



COLOR CODE PATCH IS TO BE PHOTO-PRINTED IN ANODIC BROWN, IF 15-1961, No. 410.

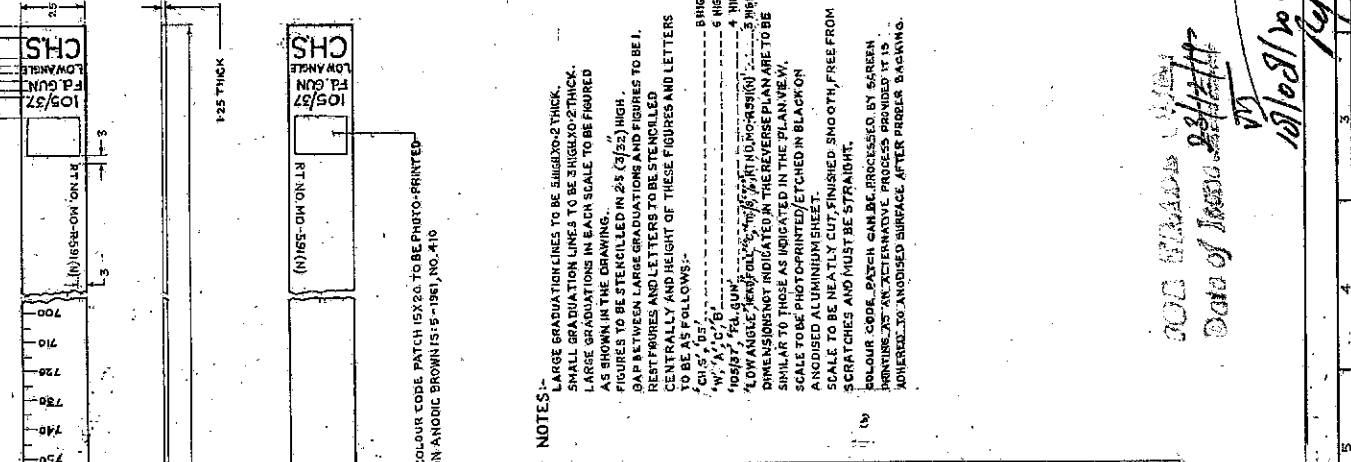
NOTES -
 LARGE GRADUATION LINES TO BE 5 HIGH x 0.2 THICK
 SMALL GRADUATION LINES TO BE 3 HIGH x 0.2 THICK
 LARGE GRADUATIONS IN EACH SCALE TO BE FIGURED AS SHOWN IN THE DRAWING IN 25(3/32) HIGH FIGURES TO BE STENCILED IN REVERSE PLAN ARE TO BE 1 GAP BETWEEN LARGE GRADUATIONS AND FIGURES TO BE REST FIGURES & LETTERS TO BE STRUCKLED CENTRALLY AND HEIGHT OF THESE FIGURES & LETTERS TO BE AS FOLLOWS:-
 'CH', '04', '8 HIGH
 'W', 'C', 'B', '4 HIGH
 'OB', '7', 'FD', 'GUN', '3 HIGH
 'ET', 'NO', 'MS', 'R', '59', 'KN', '3 HIGH
 BE SIMILAR TO THOSE AS INDICATED IN THE PLAN VIEW SCALE TO BE PHOTO-PRINTED/ ETCHED IN BLACK ON ANODIZED ALUMINUM SHEET.
 SCALE TO BE NEATLY CUT, FINISHED SMOOTH, FREE FROM SCRATCHES & MUST BE STRAIGHT.
 COLOR CODE PATCH CAN BE PROCESSED BY SCREEN PRINTING AS AN ALTERNATIVE PROCESS PROVIDED IT IS ADHERED TO ANODIZED SURFACE AFTER PROPER BAKING.

SCALE 'A'	SCALE 'B'	SCALE 'C'	SCALE 'D'	SCALE 'E'	SCALE 'F'	SCALE 'G'	SCALE 'H'	SCALE 'I'	SCALE 'J'	SCALE 'K'	SCALE 'L'	SCALE 'M'	SCALE 'N'	SCALE 'O'	SCALE 'P'	SCALE 'Q'	SCALE 'R'	SCALE 'S'	SCALE 'T'	SCALE 'U'	SCALE 'V'	SCALE 'W'	SCALE 'X'	SCALE 'Y'	SCALE 'Z'
100	65	80	100	150	200	250	300	350	400	450	500	550	600	650	700	750	800	850	900	950	1000	1050	1100	1150	1200
0.4	0.4	0.4	0.4	0.4	0.4	0.4	0.4	0.4	0.4	0.4	0.4	0.4	0.4	0.4	0.4	0.4	0.4	0.4	0.4	0.4	0.4	0.4	0.4	0.4	0.4
100	65	80	100	150	200	250	300	350	400	450	500	550	600	650	700	750	800	850	900	950	1000	1050	1100	1150	1200
0.4	0.4	0.4	0.4	0.4	0.4	0.4	0.4	0.4	0.4	0.4	0.4	0.4	0.4	0.4	0.4	0.4	0.4	0.4	0.4	0.4	0.4	0.4	0.4	0.4	0.4

DATE OF ISSUE 12/12/11
 12/10/11
 12/10/11

SCALE, GRAPHICAL FIRING, RANGE CH. SUPER, MET. 04.

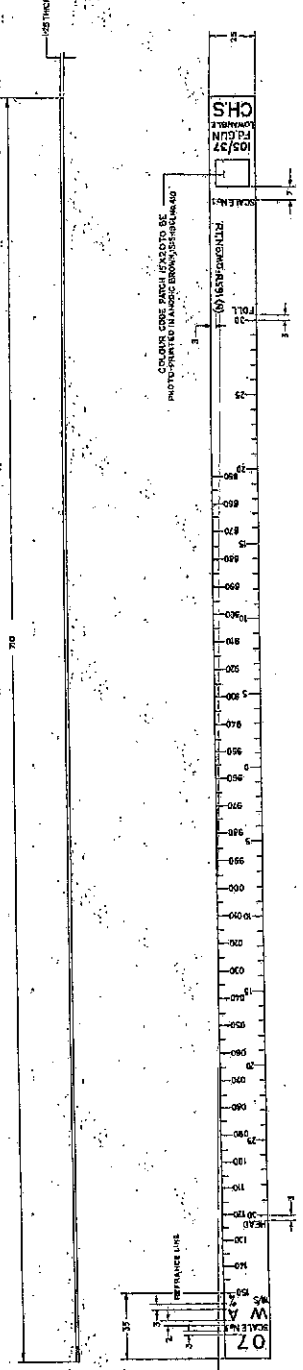
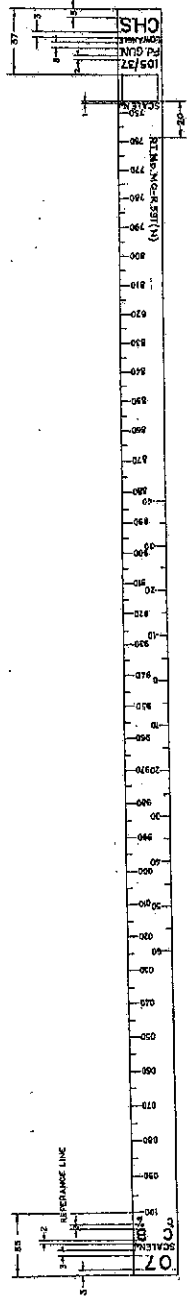
SYMBOLS	AMENDMENTS	CHECKED BY	DATE
10	REVISIONS	10/27/57	10/27/57
11	REVISIONS	10/27/57	10/27/57
12	REVISIONS	10/27/57	10/27/57
13	REVISIONS	10/27/57	10/27/57
14	REVISIONS	10/27/57	10/27/57



SCALE 'A'	DISTANCE OF FIGURES TO GRADUATION LINES FROM REF. LINE	SCALE 'B'	DISTANCE OF FIGURES TO GRADUATION LINES FROM REF. LINE	SCALE 'C'	DISTANCE OF FIGURES TO GRADUATION LINES FROM REF. LINE	SCALE 'D'	DISTANCE OF FIGURES TO GRADUATION LINES FROM REF. LINE
100	0	50	0	30	0	20	0
110	10	55	5	35	5	25	5
120	20	60	10	40	10	30	10
130	30	65	15	45	15	35	15
140	40	70	20	50	20	40	20
150	50	75	25	55	25	45	25
160	60	80	30	60	30	50	30
170	70	85	35	65	35	55	35
180	80	90	40	70	40	60	40
190	90	95	45	75	45	65	45
200	100	100	50	80	50	70	50
210	110	105	55	85	55	75	55
220	120	110	60	90	60	80	60
230	130	115	65	95	65	85	65
240	140	120	70	100	70	90	70
250	150	125	75	105	75	95	75
260	160	130	80	110	80	100	80
270	170	135	85	115	85	105	85
280	180	140	90	120	90	110	90
290	190	145	95	125	95	115	95
300	200	150	100	130	100	120	100
310	210	155	105	135	105	125	105
320	220	160	110	140	110	130	110
330	230	165	115	145	115	135	115
340	240	170	120	150	120	140	120
350	250	175	125	155	125	145	125
360	260	180	130	160	130	150	130
370	270	185	135	165	135	155	135
380	280	190	140	170	140	160	140
390	290	195	145	175	145	165	145
400	300	200	150	180	150	170	150
410	310	205	155	185	155	175	155
420	320	210	160	190	160	180	160
430	330	215	165	195	165	185	165
440	340	220	170	200	170	190	170
450	350	225	175	205	175	195	175
460	360	230	180	210	180	200	180
470	370	235	185	215	185	205	185
480	380	240	190	220	190	210	190
490	390	245	195	225	195	215	195
500	400	250	200	230	200	220	200
510	410	255	205	235	205	225	205
520	420	260	210	240	210	230	210
530	430	265	215	245	215	235	215
540	440	270	220	250	220	240	220
550	450	275	225	255	225	245	225
560	460	280	230	260	230	250	230
570	470	285	235	265	235	255	235
580	480	290	240	270	240	260	240
590	490	295	245	275	245	265	245
600	500	300	250	280	250	270	250
610	510	305	255	285	255	275	255
620	520	310	260	290	260	280	260
630	530	315	265	295	265	285	265
640	540	320	270	300	270	290	270
650	550	325	275	305	275	295	275
660	560	330	280	310	280	300	280
670	570	335	285	315	285	305	285
680	580	340	290	320	290	310	290
690	590	345	295	325	295	315	295
700	600	350	300	330	300	320	300
710	610	355	305	335	305	325	305
720	620	360	310	340	310	330	310
730	630	365	315	345	315	335	315
740	640	370	320	350	320	340	320
750	650	375	325	355	325	345	325
760	660	380	330	360	330	350	330
770	670	385	335	365	335	355	335
780	680	390	340	370	340	360	340
790	690	395	345	375	345	365	345
800	700	400	350	380	350	370	350
810	710	405	355	385	355	375	355
820	720	410	360	390	360	380	360
830	730	415	365	395	365	385	365
840	740	420	370	400	370	390	370
850	750	425	375	405	375	395	375
860	760	430	380	410	380	400	380
870	770	435	385	415	385	405	385
880	780	440	390	420	390	410	390
890	790	445	395	425	395	415	395
900	800	450	400	430	400	420	400
910	810	455	405	435	405	425	405
920	820	460	410	440	410	430	410
930	830	465	415	445	415	435	415
940	840	470	420	450	420	440	420
950	850	475	425	455	425	445	425
960	860	480	430	460	430	450	430
970	870	485	435	465	435	455	435
980	880	490	440	470	440	460	440
990	890	495	445	475	445	465	445
1000	900	500	450	480	450	470	450

SCALE 'E'	DISTANCE OF FIGURES TO GRADUATION LINES FROM REF. LINE	SCALE 'F'	DISTANCE OF FIGURES TO GRADUATION LINES FROM REF. LINE	SCALE 'G'	DISTANCE OF FIGURES TO GRADUATION LINES FROM REF. LINE	SCALE 'H'	DISTANCE OF FIGURES TO GRADUATION LINES FROM REF. LINE
100	0	50	0	30	0	20	0
110	10	55	5	35	5	25	5
120	20	60	10	40	10	30	10
130	30	65	15	45	15	35	15
140	40	70	20	50	20	40	20
150	50	75	25	55	25	45	25
160	60	80	30	60	30	50	30
170	70	85	35	65	35	55	35
180	80	90	40	70	40	60	40
190	90	95	45	75	45	65	45
200	100	100	50	80	50	70	50
210	110	105	55	85	55	75	55
220	120	110	60	90	60	80	60
230	130	115	65	95	65	85	65
240	140	120	70	100	70	90	70
250	150	125	75	105	75	95	75
260	160	130	80	110	80	100	80
270	170	135	85	115	85	105	85
280	180	140	90	120	90	110	90
290	190	145	95	125	95	115	95
300	200	150	100	130	100	120	100
310	210	155	105	135	105	125	105
320	220	160	110	140	110	130	110
330	230	165	115	145	115	135	115
340	240	170	120	150	120	140	120
350	250	175	125	155	125	145	125
360	260	180	130	160	130	150	130
370	270	185	135	165	135	155	135
380	280	190	140	170	140	160	140
390	290	195	145	175	145	165	145
400	300	200	150	180	150	170	150
410	310	205	155	185	155	175	155
420	320	210	160	190	160	180	160
430	330	215	165	195	165	185	165
440	340	220	170	200	170	190	170
450	350	225	175	205	175	195	175
460	360	230	180	210	180	200	180
470	370	235	185	215	185	205	185
480	380	240	190	220	190	210	190
490	390	245	195	225	195	215	195
500	400	250	200	230	200	220	200
510	410	255	205	235	205	225	205
520	420	260	210	240	210	230	210
530	430	265	215	245	215	235	215
540	440	270	220	250	220	240	220
550	450	275	225	255	225	245	225
560	460	280	230	260	230	250	230
570	470	285	235	265	235	255	235
580	480	290	240	270	240	260	240
590	490	295	245	275	245	265	245
600	500	300	250	280	250	270	250
610	510	305	255	285	255	275	255
620	520	310	260	290	260	280	260
630	530	315	265	295	265	285	265
640	540	320	270	300	270	290	270
650	550	325	275	305	275	295	275
660	560	330	280	310	280	300	280
670	570	335	285	315	285	305	285
680	580	340	290	320	290	310	290
690	590	345	295	325	295	315	295
700	600	350	300	330	300	320	300
710	610	355	305	335	305	325	305
720	620	360	310	340	310	330	310
730	630	365	315	345	315	335	315
740	640	370	320	350	320	340	320
750	650	375	325	355	325	345	325
760	660	380	330	360	330	350	330
770	670	385	335	365	335	355	335
780	680	390	340	370	340	360	340
790	690	395	345	375	345	365	345
800	700	400	350	380	350	370	350
810	710	405	355	385	355	375	355
820	720	410	360	390	360	380	360
830	730	415	365	395	365	385	365
840	740	420	370	400	370	390	370
850	750	425	375	405	375	395	375
860	760	430	380	410	380	400	380
870	770	435	385	415	385	405	385
880	780	440	390	420	390	410	390
890	790	445	395	425	395	415	395

NO.	DESCRIPTION	DATE
1	AS BUILT	11/1/57
2	REVISIONS	
3	REVISIONS	
4	REVISIONS	
5	REVISIONS	
6	REVISIONS	
7	REVISIONS	
8	REVISIONS	
9	REVISIONS	
10	REVISIONS	
11	REVISIONS	
12	REVISIONS	
13	REVISIONS	
14	REVISIONS	
15	REVISIONS	
16	REVISIONS	
17	REVISIONS	
18	REVISIONS	
19	REVISIONS	
20	REVISIONS	



STATION	GRADE 'A'		GRADE 'B'		GRADE 'C'		GRADE 'D'	
	EL.	AREA	EL.	AREA	EL.	AREA	EL.	AREA
0+00	81.0	0.0	81.0	0.0	81.0	0.0	81.0	0.0
0+10	81.0	10.0	81.0	10.0	81.0	10.0	81.0	10.0
0+20	81.0	20.0	81.0	20.0	81.0	20.0	81.0	20.0
0+30	81.0	30.0	81.0	30.0	81.0	30.0	81.0	30.0
0+40	81.0	40.0	81.0	40.0	81.0	40.0	81.0	40.0
0+50	81.0	50.0	81.0	50.0	81.0	50.0	81.0	50.0
0+60	81.0	60.0	81.0	60.0	81.0	60.0	81.0	60.0
0+70	81.0	70.0	81.0	70.0	81.0	70.0	81.0	70.0
0+80	81.0	80.0	81.0	80.0	81.0	80.0	81.0	80.0
0+90	81.0	90.0	81.0	90.0	81.0	90.0	81.0	90.0
0+100	81.0	100.0	81.0	100.0	81.0	100.0	81.0	100.0

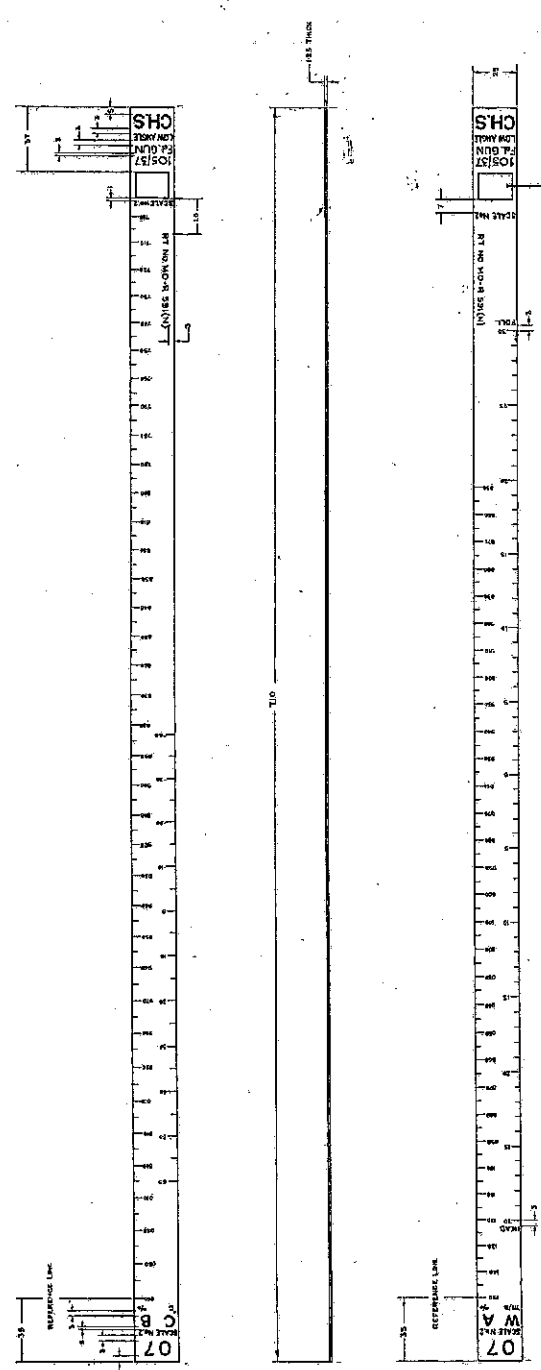
NOTES--
 1. GRADE LINES TO BE 3/16" OR 1/8" THICK.
 2. SMALL GRADATIONS IN EACH SCALE TO BE FIGURED AS SHOWN IN THE DRAWING.
 3. LARGE GRADATIONS IN EACH SCALE TO BE FIGURED AS SHOWN IN THE DRAWING.
 4. REST FIGURES AND LETTERS TO BE SPACED CENTRALLY AND HEIGHT OF
 "X" TO BE 1/8" OR 1/16" AS SHOWN.
 5. "X" TO BE 1/8" OR 1/16" AS SHOWN.
 6. "X" TO BE 1/8" OR 1/16" AS SHOWN.
 7. "X" TO BE 1/8" OR 1/16" AS SHOWN.
 8. "X" TO BE 1/8" OR 1/16" AS SHOWN.
 9. "X" TO BE 1/8" OR 1/16" AS SHOWN.
 10. "X" TO BE 1/8" OR 1/16" AS SHOWN.
 11. "X" TO BE 1/8" OR 1/16" AS SHOWN.
 12. "X" TO BE 1/8" OR 1/16" AS SHOWN.
 13. "X" TO BE 1/8" OR 1/16" AS SHOWN.
 14. "X" TO BE 1/8" OR 1/16" AS SHOWN.
 15. "X" TO BE 1/8" OR 1/16" AS SHOWN.
 16. "X" TO BE 1/8" OR 1/16" AS SHOWN.
 17. "X" TO BE 1/8" OR 1/16" AS SHOWN.
 18. "X" TO BE 1/8" OR 1/16" AS SHOWN.
 19. "X" TO BE 1/8" OR 1/16" AS SHOWN.
 20. "X" TO BE 1/8" OR 1/16" AS SHOWN.

WORK TRADES
 DATE OF 1958
 11/1/57
 11/1/57

1351

DATE OF ISSUE 28/11/19
 V. J. JAYARAJAN
 R. J. JAYARAJAN

NO.	122030839
DATE	11/11/19
TIME	11:11
BY	...
FOR EXPLANATION OF	...
CONTRACT NO.	...
PROJECT	...
SCALE	...



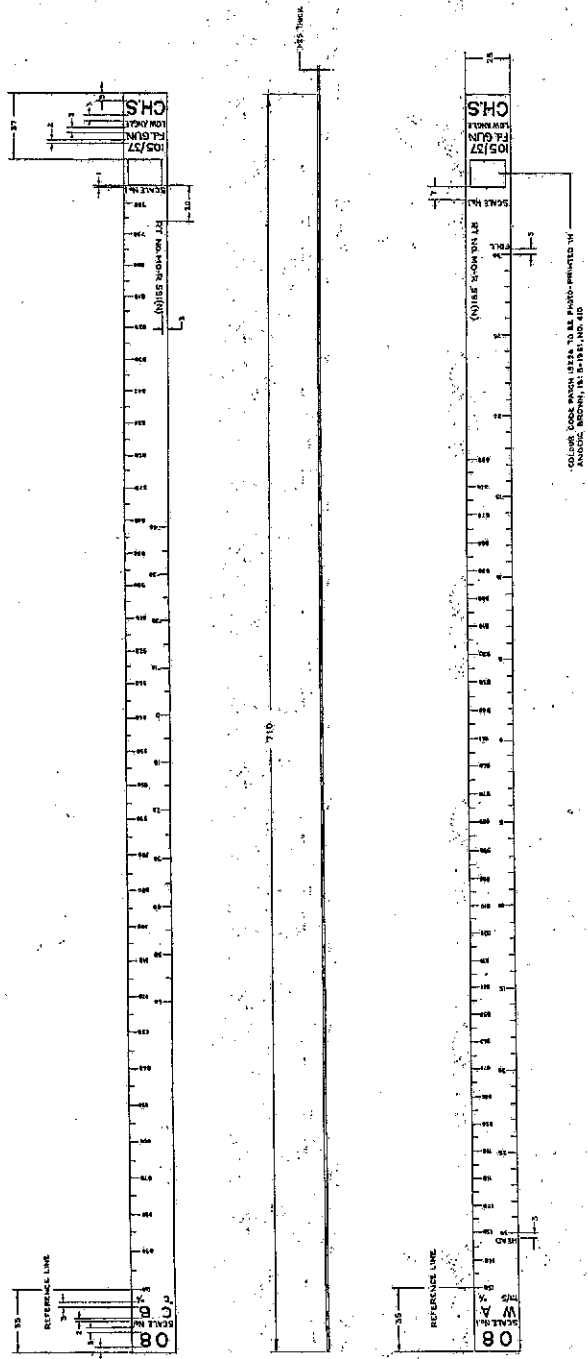
COLOUR CODE MARKINGS TO BE PHOTOGRAPHED IN
 FRONT OF TARGET AT DISTANCE OF 10 METERS

NOTE:
 1. THE DIMENSIONS SHOWN IN THIS DRAWING ARE IN METERS UNLESS OTHERWISE SPECIFIED.
 2. ALL DIMENSIONS SHALL BE TO THE CENTRE UNLESS OTHERWISE SPECIFIED.
 3. THE DIMENSIONS OF THE TARGET SHALL BE AS SHOWN IN THE DRAWING.
 4. THE DIMENSIONS OF THE TARGET SHALL BE AS SHOWN IN THE DRAWING.
 5. THE DIMENSIONS OF THE TARGET SHALL BE AS SHOWN IN THE DRAWING.
 6. THE DIMENSIONS OF THE TARGET SHALL BE AS SHOWN IN THE DRAWING.
 7. THE DIMENSIONS OF THE TARGET SHALL BE AS SHOWN IN THE DRAWING.
 8. THE DIMENSIONS OF THE TARGET SHALL BE AS SHOWN IN THE DRAWING.
 9. THE DIMENSIONS OF THE TARGET SHALL BE AS SHOWN IN THE DRAWING.
 10. THE DIMENSIONS OF THE TARGET SHALL BE AS SHOWN IN THE DRAWING.

SCALE	INCHES	MILLIMETERS	SCALE	INCHES	MILLIMETERS
1:1	1	25.4	1:1	1	25.4
1:2	0.5	12.7	1:2	0.5	12.7
1:3	0.333	8.5	1:3	0.333	8.5
1:4	0.25	6.35	1:4	0.25	6.35
1:5	0.2	5.08	1:5	0.2	5.08
1:6	0.167	4.25	1:6	0.167	4.25
1:8	0.125	3.18	1:8	0.125	3.18
1:10	0.1	2.54	1:10	0.1	2.54
1:12	0.083	2.11	1:12	0.083	2.11
1:15	0.067	1.68	1:15	0.067	1.68
1:20	0.05	1.27	1:20	0.05	1.27
1:25	0.04	1.02	1:25	0.04	1.02
1:30	0.033	0.84	1:30	0.033	0.84
1:40	0.025	0.64	1:40	0.025	0.64
1:50	0.02	0.51	1:50	0.02	0.51
1:60	0.017	0.43	1:60	0.017	0.43
1:75	0.013	0.33	1:75	0.013	0.33
1:100	0.01	0.25	1:100	0.01	0.25
1:125	0.008	0.20	1:125	0.008	0.20
1:150	0.007	0.18	1:150	0.007	0.18
1:200	0.005	0.13	1:200	0.005	0.13
1:250	0.004	0.10	1:250	0.004	0.10
1:300	0.003	0.08	1:300	0.003	0.08
1:400	0.0025	0.06	1:400	0.0025	0.06
1:500	0.002	0.05	1:500	0.002	0.05
1:600	0.0017	0.04	1:600	0.0017	0.04
1:750	0.0013	0.03	1:750	0.0013	0.03
1:1000	0.001	0.02	1:1000	0.001	0.02

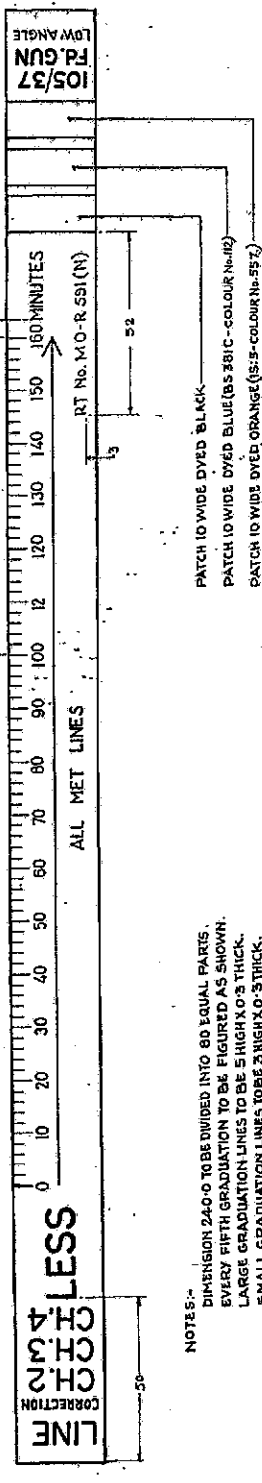
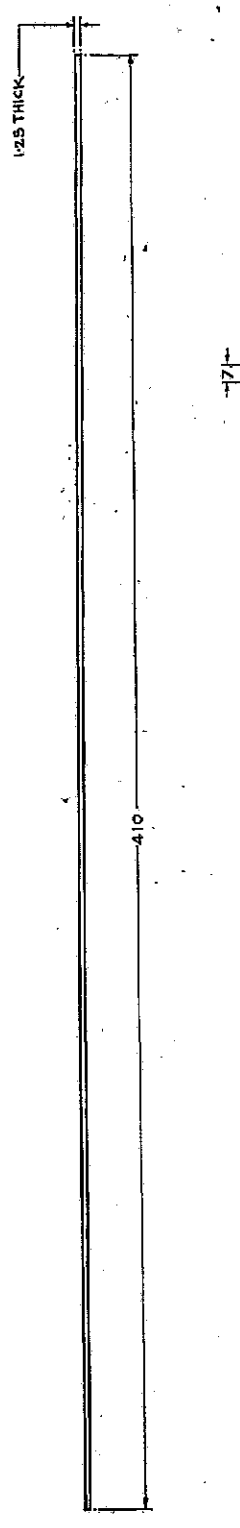
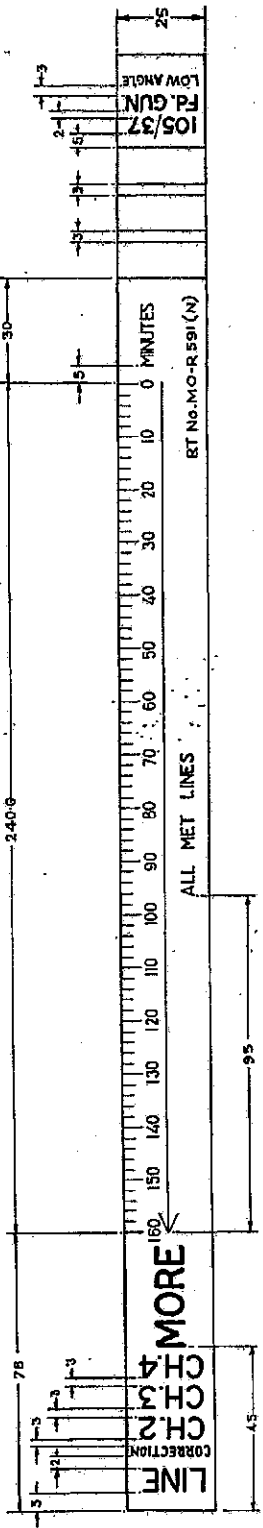
ALL GRADES ON
 DATE OF 10/11/50
 10/11/50

DATE	10/11/50
BY	...
CHECKED	...
APPROVED	...
SCALE	1" = 40'
PROJECT	...

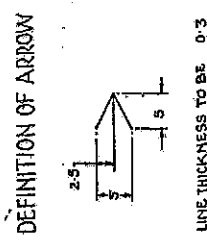


STATION	PROPOSED GRADE (FT)	GROUND GRADE (FT)	CUT (FT)	FILL (FT)
10+00	80.0	80.0	0.0	0.0
10+05	80.5	80.5	0.0	0.0
10+10	81.0	81.0	0.0	0.0
10+15	81.5	81.5	0.0	0.0
10+20	82.0	82.0	0.0	0.0
10+25	82.5	82.5	0.0	0.0
10+30	83.0	83.0	0.0	0.0
10+35	83.5	83.5	0.0	0.0
10+40	84.0	84.0	0.0	0.0
10+45	84.5	84.5	0.0	0.0
10+50	85.0	85.0	0.0	0.0

NOTES:
 1) LARGE GRADIENTS ARE TO BE 5% MINIMUM.
 2) SMALL GRADIENTS ARE TO BE 1% MINIMUM.
 3) ALL GRADES ARE TO BE 1% MINIMUM.
 4) ALL GRADES ARE TO BE 1% MINIMUM.
 5) ALL GRADES ARE TO BE 1% MINIMUM.
 6) ALL GRADES ARE TO BE 1% MINIMUM.
 7) ALL GRADES ARE TO BE 1% MINIMUM.
 8) ALL GRADES ARE TO BE 1% MINIMUM.
 9) ALL GRADES ARE TO BE 1% MINIMUM.
 10) ALL GRADES ARE TO BE 1% MINIMUM.



NOTES:-
 DIMENSION 240.0 TO BE DIVIDED INTO 80 EQUAL PARTS.
 EVERY FIFTH GRADUATION TO BE FIGURED AS SHOWN.
 LARGE GRADUATION LINES TO BE 5 HIGH X 0.3 THICK.
 SMALL GRADUATION LINES TO BE 2 HIGH X 0.3 THICK.
 GAP BETWEEN LARGE GRADUATION LINES & FIGURES TO BE 1.
 FIGURES AND THE WORD 'MINUTES' TO BE STENCILLED IN 3 HIGH AT SAME HEIGHT.
 OTHER LETTERS & FIGURES TO BE STENCILLED AS FOLLOWS:-
 'LINE', CH. 2, CH. 3, CH. 4, ----- 6 HIGH
 'MORE' AND 'LESS' ----- 8 HIGH AND
 TO BE STENCILLED CENTRALLY ON THE SCALE AS SHOWN.
 '105/37' FA.GUN ----- 4 HIGH
 'CORRECTION' & 'LOW ANGLE' RT No. MO-R 591(N) ----- 3 HIGH AND
 'ALL MET LINES' ----- 3 HIGH AND
 TO BE STENCILLED CENTRALLY BETWEEN LOWER EDGE OF THE SCALE AND THE ARROW AS SHOWN.
 DIMENSIONS NOT INDICATED IN THE REVERSE PLAN ARE SIMILAR TO THOSE AS INDICATED IN THE PLAN VIEW.
 SCALES TO BE PHOTO PRINTED/ ETCHED IN BLACK ON ANODISED ALUMINIUM SHEET.
 SCALE TO BE NEATLY CUT, FINISHED, SMOOTH, FREE FROM SCRATCHES AND MUST BE STRAIGHT.
 LENGTH OF ARROW TO BE 240.0 AND TO BE DRAWN CENTRALLY BETWEEN DIMENSION 160 AND 0 AS SHOWN.
 COLOUR CODE PATCH CAN BE PROCESSED BY SCREEN PRINTING AS AN ALTERNATIVE PROCESS PROVIDED IT IS ADHERED TO ANODISED SURFACE AFTER PROPER BACKING.



SCALE = 2:1

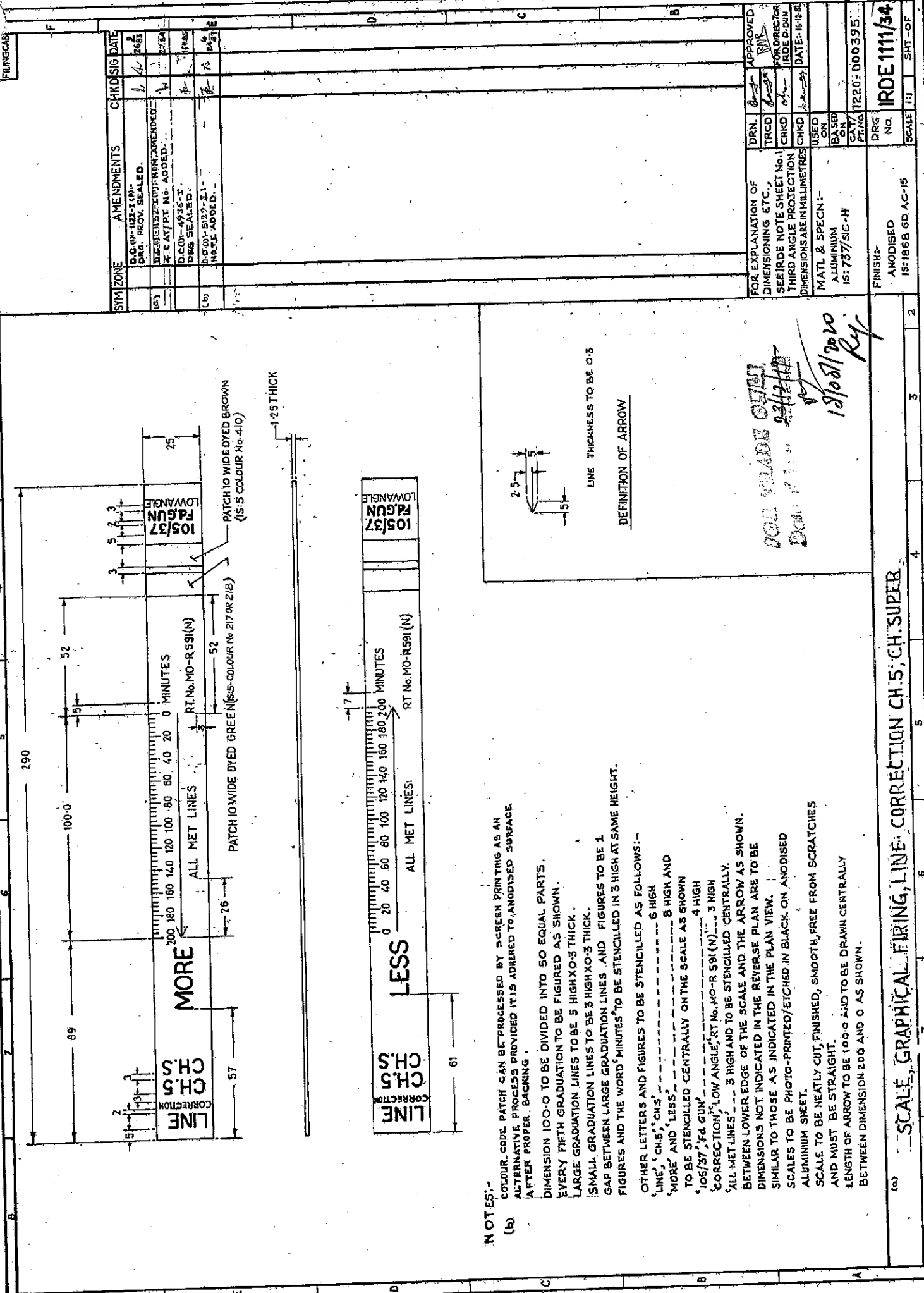
100% FILLING OILY
DATE 18/08/2010
Ref

SYMBOL	AMENDMENTS	CHKD	SIG	DATE
(a)	D.CO. 102-2421-1000-AMENDED & CAPT. PR. NO. ADDED.	L	A	1/1/89
(b)	D.CO. 102-2421-1000-AMENDED & CAPT. PR. NO. ADDED.	L	A	2/1/89
(c)	D.CO. 102-2421-1000-AMENDED & CAPT. PR. NO. ADDED.	L	A	2/1/89

DRN	APPROVED
TRCD	FOR DIRECTOR
CHKD	IRDE (DRAWN)
CHKD	DATE: 16/2/82
USED ON	
BASED ON	
CAT/PR NO	1220-000394
DIR. No.	IRDE III/33
SCALE 1:1	SH
GP	

FOR EXPLANATION OF DIMENSIONING ETC. SEE IRDE NOTE SHEET No. 1 THIRD ANGLE PROJECTION DIMENSIONS ARE IN MILLIMETRES. MATL. & SPECIM. ALUMINIUM 15:73/SIC-H

FINISH:- ANODISED 15:18EED: AG-15



NOTES:-

(a) COLOUR CODE PATCH CAN BE PROCESSED BY GREEN PRINTING AS AN ALTERNATIVE PROCESS PROVIDED IT IS ADHERED TO ANODISED SURFACE AFTER PROPER BACKING.

(b) DIMENSION 100.0 TO BE DIVIDED INTO 50 EQUAL PARTS. EVERY FIFTH GRADUATION TO BE FIGURED AS SHOWN. LARGE GRADUATION LINES TO BE 5 HIGH X 0.3 THICK. SMALL GRADUATION LINES TO BE 3 HIGH X 0.3 THICK. GAP BETWEEN LARGE GRADUATION LINES AND FIGURES TO BE 1. FIGURES AND THE WORD 'MINUTES' TO BE STENCILLED IN 3 HIGH AT SAME HEIGHT.

OTHER LETTERS AND FIGURES TO BE STENCILLED AS FOLLOWS:-
 'LINE', 'CHS', 'CORRECTION', 'LOW ANGLE', 'RT No. MO-R591(N)' --- 3 HIGH
 'MORE' AND 'LESS' --- 8 HIGH AND TO BE STENCILLED CENTRALLY ON THE SCALE AS SHOWN
 '105/37', 'F4 GUN' --- 4 HIGH
 'ALL MET LINES' --- 3 HIGH AND TO BE STENCILLED CENTRALLY.
 BETWEEN LOWER EDGE OF THE SCALE AND THE ARROW AS SHOWN. DIMENSIONS NOT INDICATED IN THE REVERSE PLAN ARE TO BE SIMILAR TO THOSE AS INDICATED IN THE PLAN VIEW. SCALES TO BE PHOTO-PRINTED/ETCHED IN BLACK ON ANODISED ALUMINIUM SHEET.
 SCALE TO BE NEATLY CUT, FINISHED, SMOOTH, FREE FROM SCRATCHES AND MUST BE STRAIGHT.
 LENGTH OF ARROW TO BE 100.0 AND TO BE DRAWN CENTRALLY BETWEEN DIMENSION 200 AND 0 AS SHOWN.

100% TRADE OFF
Don't
18/08/2020
18/08/2020

SYM ZONE	AMENDMENTS	CHKD	SIG	DATE
	D.C. (1)-1122-1(P) DRAWT. PROV. SEALED.			26/53
	AMENDMENTS 22-10-1997 FROM AMENDED DRAWT. PT. NO. ADDED.			28/54
	D.C. (1)-4936-1 DWS SEALED.			19/55
	D.C. (1)-5139-1 I. NO. 11E ADDED.			16/56

FOR EXPLANATION OF DIMENSIONING ETC., SEE IRDE NOTE SHEET No. 1	DRN. <i>[Signature]</i>	APPROVED <i>[Signature]</i>
THIRD ANGLE PROJECTION DIMENSIONS ARE IN MILLIMETRES	TRCD <i>[Signature]</i>	FOR DIRECTOR IRDE D.D. (IN)
MATL & SPECN:- ALUMINIUM 15:737/SIC-H	CHKD <i>[Signature]</i>	DATE: 16-12-81
	USED ON BASE PLNG	
	DRG No. 11220-000395	
FINISH:- ANODISED 15:1868 GD. AC-15	SCALE 1:1	SHT. OF IRDE 1111/34

FOR EXPLANATION OF DIMENSIONING ETC, SEE CIITECH. INSTRUCTIONS No. 01.
THIRD ANGLE PROJECTION DIMENSIONS ARE IN mm.

GRADUATIONS, RANGE

RANGE IN YARDS	DISTANCE FROM REFLINE ON 0 LINE NN'	DISTANCE FROM REFLINE ON +500 LINE DD'	DISTANCE FROM REFLINE ON +450 LINE	DISTANCE FROM REFLINE ON -450 LINE	DISTANCE FROM REFLINE ON -500 LINE AA'
1000	76.20	63.50	64.77	87.63	88.90
2000	101.60	88.90	90.17	113.03	114.30
3000	127.00	114.30	115.57	138.43	139.70
4000	152.40	139.70	140.97	163.83	165.10
5000	177.80	165.10	166.37	189.23	190.50
6000	203.20	190.50	191.77	214.63	215.90
7000	228.60	215.90	217.17	240.03	241.30
8000	254.00	241.30	242.57	265.43	266.70
9000	279.40	266.70	267.97	290.83	292.10

TIME OF FLIGHT = 10 SECONDS

MVft/s	DISTANCE FROM REF. LINE ON +600 LINE	DISTANCE FROM REF. LINE ON +570 LINE	DISTANCE FROM REF. LINE ON -570 LINE	DISTANCE FROM REF. LINE ON -600 LINE
850	102.87	103.63	132.59	133.35
900	106.68	107.44	136.40	137.16
950	110.49	111.25	140.21	140.97
1000	113.79	114.55	143.51	144.27

TIME OF FLIGHT = 20 SECONDS

MVft/s	DISTANCE FROM REF. LINE ON +600 LINE	DISTANCE FROM REF. LINE ON +570 LINE	DISTANCE FROM REF. LINE ON -570 LINE	DISTANCE FROM REF. LINE ON -600 LINE
850	158.75	159.51	188.47	189.23
900	165.10	165.86	194.82	195.58
950	171.45	172.21	201.17	201.93
1000	177.80	178.56	207.52	208.28

TIME OF FLIGHT = 30 SECONDS

MVft/s	DISTANCE FROM REF. LINE ON +600 LINE	DISTANCE FROM REF. LINE ON +570 LINE	DISTANCE FROM REF. LINE ON -570 LINE	DISTANCE FROM REF. LINE ON -600 LINE
850	191.77	192.53	221.49	222.25
900	202.69	203.45	232.41	233.17
950	212.85	213.61	242.57	243.33
1000	223.52	224.28	253.24	254.00

DATA, CHARGE 2

DRAWN		TRACED	APPROVED
sd/-		sd/-	sd/-
CHECKED		FOR DIRECTOR	
sd/-		IRDE D.DUN	
SCALE:		DATE:- 10-10-64	
D.C.(I):- 3604-I, DRG. METRICISED & SEALED IN SUPERSESSION OF EXISTING ONE		sd/-	1.8.77
AMENDMENTS		SIG	DATE
MATL:-		DRG.No.	
FINISH:-		IRDE 173/1 (METRIC)	
GRAPH, CHARGES 2 & SUPER		CAT/PT.No.	
		1220-000036	
		3 SHEETS	SHEET-2

D.C.(I):- 0380-I(P), 1808-I, 3604-I,

DRG. METRICISED AT CI, D.DUN.
CHD. BY: sd/-
CHD. BY: sd/-
DATE: 12-7-76

RE-TRACED AT CGA(I), D.DUN.
TRACED BY: N.KUMAR
CHD. BY: sd/-
DATE: 28.6.99

FOR TRADE OFF
12/10/77
sd/-

FOR EXPLANATION OF DIMENSIONING, ETC, SEE CII, TECH. INSTRUCTIONS No. 01
THIRD ANGLE PROJECTION DIMENSIONS ARE IN mm.

DATA, CHARGE SUPER

46/54

TIME OF FLIGHT = 20 SECONDS				
MV ft/s	DISTANCE FROM REF. LINE ON +600 LINE	DISTANCE FROM REF. LINE ON +570 LINE	DISTANCE FROM REF. LINE ON -570 LINE	DISTANCE FROM REF. LINE ON -600 LINE
1550	115.06	115.82	144.78	145.54
1600	117.60	118.36	147.32	148.08
1650	120.14	120.90	149.86	150.62
1700	122.94	123.69	152.65	153.42
1750	125.22	125.98	154.94	155.70

TIME OF FLIGHT = 30 SECONDS				
MV ft/s	DISTANCE FROM REF. LINE ON +600 LINE	DISTANCE FROM REF. LINE ON +570 LINE	DISTANCE FROM REF. LINE ON -570 LINE	DISTANCE FROM REF. LINE ON -600 LINE
1550	177.80	178.56	207.52	208.28
1600	181.61	182.31	211.33	212.09
1650	185.42	186.18	215.14	215.90
1700	189.23	189.99	218.95	219.71
1750	193.04	193.80	222.76	223.52

TIME OF FLIGHT = 40 SECONDS				
MV ft/s	DISTANCE FROM REF. LINE ON +600 LINE	DISTANCE FROM REF. LINE ON +570 LINE	DISTANCE FROM REF. LINE ON -570 LINE	DISTANCE FROM REF. LINE ON -600 LINE
1550	226.06	226.82	255.78	256.54
1600	231.14	231.90	260.86	261.62
1650	236.22	236.98	265.94	266.70
1700	241.05	241.81	270.76	271.53
1750	246.38	247.14	276.97	276.86

TIME OF FLIGHT = 50 SECONDS				
MV ft/s	DISTANCE FROM REF. LINE ON +600 LINE	DISTANCE FROM REF. LINE ON +570 LINE	DISTANCE FROM REF. LINE ON -570 LINE	DISTANCE FROM REF. LINE ON -600 LINE
1550	249.68	250.44	279.40	280.16
1600	257.30	258.06	287.02	287.78
1650	264.16	264.92	293.88	294.64
1700	271.02	272.29	300.74	301.50
1750	278.89	279.65	308.61	309.37

GRADUATIONS, RANGE

RANGE IN YARDS	DISTANCE FROM REF. LINE ON 0 LINE. NN	DISTANCE FROM REF. LINE ON +500 LINE. DD	DISTANCE FROM REF. LINE ON +450 LINE.	DISTANCE FROM REF. LINE ON -450 LINE.	DISTANCE FROM REF. LINE ON -500 LINE. AA
3000	25.40	12.70	13.97	—	—
4000	50.80	38.10	39.37	—	—
5000	76.20	63.50	64.77	83.67	88.90
6000	101.60	88.90	90.17	113.03	114.30
7000	127.00	114.30	115.57	138.43	139.70
8000	152.40	139.70	140.97	163.83	165.10
9000	177.80	165.10	166.37	189.23	190.50
10000	203.20	190.50	191.77	214.63	215.90
11000	228.60	215.90	217.17	240.03	241.30
12000	254.00	241.30	242.57	265.43	266.70
13000	279.40	266.70	267.97	290.83	292.10
14000	304.80	292.10	293.37	316.23	317.50

D.C. (I): 0380-I(F), 1808-I, 3604-I,

DRG. METRICISED AT CII, D. DUN.

CHD. BY: sd/-
CHD. BY: sd/-
DATE:

RE. TRACED AT CII, D. DUN.

TRACED BY: N. KUMAR
CHD. BY: 20/06/64
DATE: 29.6.99

<p>FOR TRADE SIGN 23/12/77 18/1/2020 1/0</p>		<p>DRAWN TRACED sd/- sd/-</p>	<p>APPROVED sd/-</p>
		<p>CHECKED sd/- sd/-</p>	<p>FOR DIRECTOR IRDE DEHRA DUN</p>
		<p>SCALE: -</p>	<p>DATE: 10-10-64</p>
<p>D.C. (I): 3604-I, DRG. METRICISED & SEALED IN SUPERSESSION OF EXISTING ONE.</p>		<p>178.77</p>	<p>DRG. No.</p>
<p>AMENDMENTS</p>		<p>SIG. DATE</p>	<p>IRDE 173/1 (METRIC)</p>
<p>MATL: -</p>			
<p>FINISH: -</p>		<p>CAT/PT. No.</p>	
<p>GRAPH, CHARGES 2 & SUPER</p>		<p>1220-000036</p>	
		<p>3-SH. OF SH-3</p>	

FOR EXPLANATION OF DIMENSIONING ETC. SEE CH TECHNICAL INSTRUCTIONS
THIRD ANGLE PROJECTION

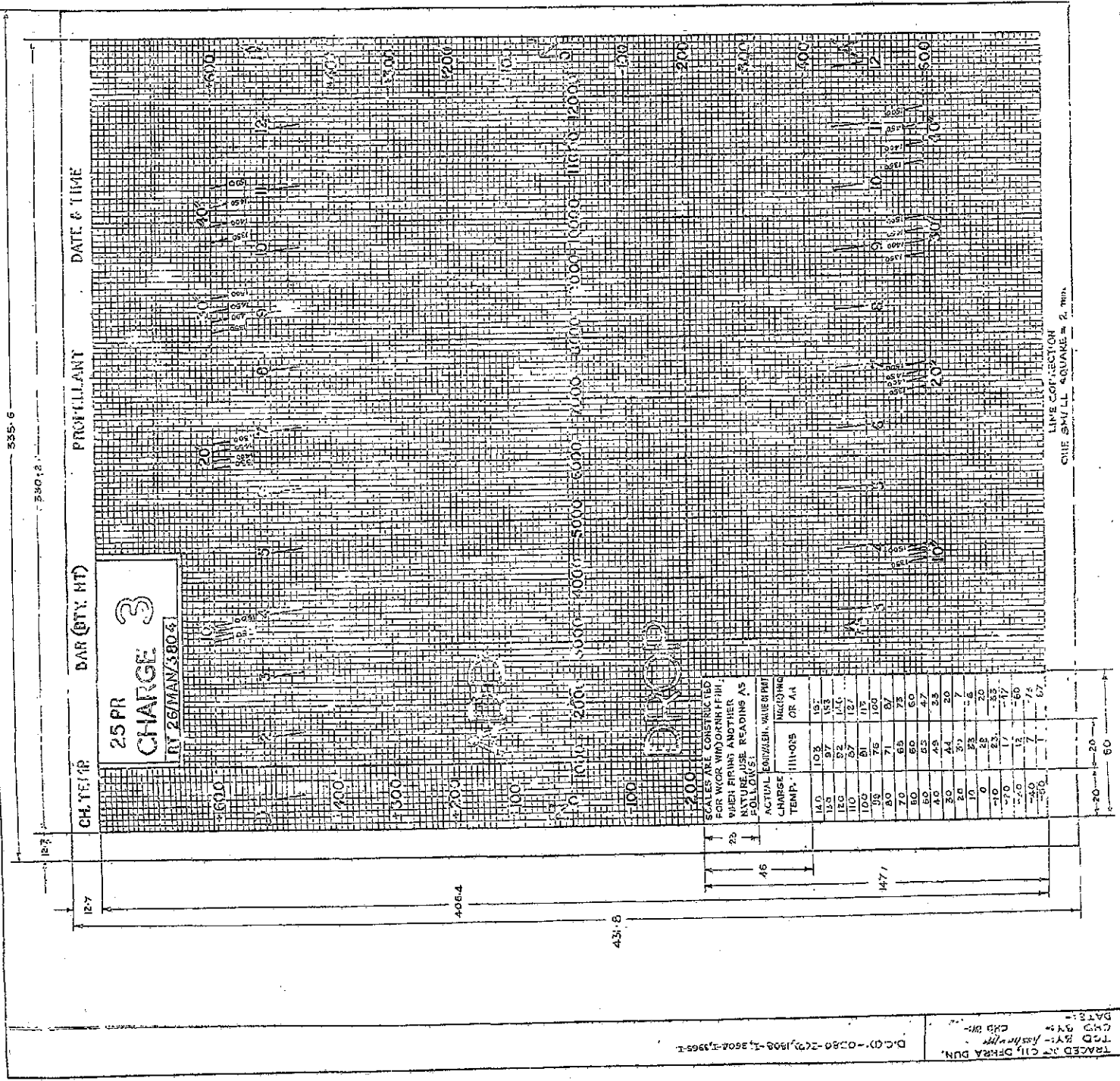
NOTES:-

1. GRAPH 406-4 mm x 25 PR. 25 PR. TO BE DIVIDED INTO 208 EQUAL SQUARES OF 53 mm SIDE EACH 25.4 mm SQUARE-AGAIN SUBDIVIDED INTO 100 EQUAL SQUARES OF 25.4 mm SIDE EACH-75 SHOWN.
2. FROM THE ZEROING LINE, MIN GRIDS TO BE FIGURED 1 100, +200, 300, +400 & 600 UPWARD AND SIMILARLY -100, -200, -300, -400 & 600 DOWNWARD AS SHOWN.
3. THE GRAPH TO BE PRINTED IN LIGHT BLUE ON WHITE ANODISED ALUMINIUM BACK GROUND.
4. LEFT HAND CURVILINEAR LINE IS REF LINE & ALL THE DIMENSIONS TO BE TAKEN FROM THE REF. LINE.
5. THICKNESS OF LINES TO BE AS FOLLOWS:-
REF LINE, ALL INCLINED LINES & HORIZONTAL LINES +0.07
+600, -600, 0, 100, 200, 300, 400, 500, 600 0.25
LINES FORMING SQUARES 4 mm SIDE 0.25
LINES FORMING SQUARES 2.5 mm SIDE 0.13
G. THE SIZE OF FIGURES & CHARACTERS TO BE AS FOLLOWS:-
(i) DD, DROP 3
(ii) CHANGE, DD, NH & AA 1 HIGH
(iii) 25 PR. 3 HIGH
(iv) CH. TEMP. BAR (DTY. HT) PROPELLANT, DATE & TIME, (RT) (RANGE) 3004 & ALL VERTICAL & HORIZONTAL RANGE FIGURES. 3 HIGH
(v) LINE CORRECTION, ONE SMALL SQUARE = 2 mm
(vi) 350 TO 600 FIGURES IN 10° TO 40° FLIGHT, FIGURES & CHARACTERS IN THE LEFT HAND CHART. 2 mm
(vii) 350 TO 600 FIGURES TO BE PLACED AS SHOWN ON THE DRS.
7. FOR DATA SEE SH. 2.
8. 1 TO 12 ON DD' LINE & 3 TO 12 ON AA' LINE IN THE DRS. REPRESENT RANGE IN 1000 YARDS.
9. ASTERISK ON NH' AT 2000 TO BE 3 mm HIGH
10. CH. TEMP. BAR (DTY. HT) PROPELLANT, DATE & TIME, 25 PR CHARGE 3, RI 25/MAN/3804 TO BE PRINTED ON SUITABLE PLACES AS SHOWN IN THE DRAWING.
11. ALL MATTERS TO BE PRINTED IN PHOTO-ETCHED ON ALUMINIUM SHEET.

FOR BRADY COPY
Date of Issue 28/12/18
18/08/20

DESIGNED BY C. S. RAO	CHECKED BY S. S. RAO	DRAWN BY S. S. RAO	APPROVED BY S. S. RAO
DATE 18/08/20	SCALE 1:1	DATE 18/08/20	DATE 18/08/20
FOR DIRECTOR GENERAL DEFENSE		FOR DIRECTOR GENERAL DEFENSE	
DRAWING NUMBER RDE 173/2		DRAWING NUMBER RDE 173/2	
MATERIAL ALUMINIUM 15-737, 98-N OR SIC-H		CAT/PART NO. 1220-000037	
FINISH SEE NOTE		SHEETS 2-SHEETS	

GRAPH, CHARGE 3



FOR EXPLANATION OF DIMENSIONING ETC, SEE CII, TECH. INSTRUCTIONS No. 01
THIRD ANGLE PROJECTION DIMENSIONS ARE IN mm.

48/04

DATA, CHARGE 3

TIME OF FLIGHT = 10 SECONDS

Mvft/s	DISTANCE FROM REF. LINE ON +600 LINE	DISTANCE FROM REF. LINE ON +570 LINE	DISTANCE FROM REF. LINE ON -570 LINE	DISTANCE FROM REF. LINE ON -600 LINE
1350	77.72	78.49	107.44	108.20
1400	79.76	80.52	109.47	110.24
1450	81.53	82.30	111.15	112.01
1500	83.57	84.33	113.03	114.05

TIME OF FLIGHT = 20 SECONDS

Mvft/s	DISTANCE FROM REF. LINE ON +600 LINE	DISTANCE FROM REF. LINE ON +570 LINE	DISTANCE FROM REF. LINE ON -570 LINE	DISTANCE FROM REF. LINE ON -600 LINE
1350	150.11	150.88	179.83	180.59
1400	153.42	154.18	183.13	183.90
1450	156.97	157.73	186.69	187.45
1500	160.53	162.29	190.25	191.01

TIME OF FLIGHT = 30 SECONDS

Mvft/s	DISTANCE FROM REF. LINE ON +600 LINE	DISTANCE FROM REF. LINE ON +570 LINE	DISTANCE FROM REF. LINE ON -570 LINE	DISTANCE FROM REF. LINE ON -600 LINE
1350	207.26	208.03	236.98	237.74
1400	212.09	212.85	241.81	242.57
1450	217.17	217.93	246.89	247.65
1500	222.50	223.27	252.22	252.98

TIME OF FLIGHT = 40 SECONDS

Mvft/s	DISTANCE FROM REF. LINE ON +600 LINE	DISTANCE FROM REF. LINE ON +570 LINE	DISTANCE FROM REF. LINE ON -570 LINE	DISTANCE FROM REF. LINE ON -600 LINE
1350	245.87	246.63	275.59	276.35
1400	252.73	253.49	282.45	283.21
1450	260.36	261.11	290.07	290.83
1500	267.97	268.73	297.69	298.45

GRADUATIONS, RANGE

RANGE IN YARDS	DISTANCE FROM REF. LINE ON O' LINE NN'	DISTANCE FROM REF. LINE ON +500 LINE DD'	DISTANCE FROM REF. LINE ON +450 LINE	DISTANCE FROM REF. LINE ON -450 LINE	DISTANCE FROM REF. LINE ON -500 LINE AA'
1000	25.40	12.70	13.97		
2000	50.80	38.10	39.37		
3000	76.20	63.50	64.77	87.63	88.90
4000	101.60	88.90	90.17	113.03	114.30
5000	127.00	114.30	115.57	138.43	139.70
6000	152.40	139.70	140.97	163.83	165.10
7000	177.80	165.10	166.37	189.23	190.50
8000	203.20	190.50	191.77	214.63	215.90
9000	228.60	215.90	217.17	240.03	241.30
10000	254.00	241.30	242.57	265.43	266.70
11000	279.40	266.70	267.97	290.83	292.10
12000	304.80	292.10	293.37	316.23	317.50

D.C.(D):- 0380-I(P), 1808-I, 3604-I,

DRG. METRICISED AT CII, D.DUN

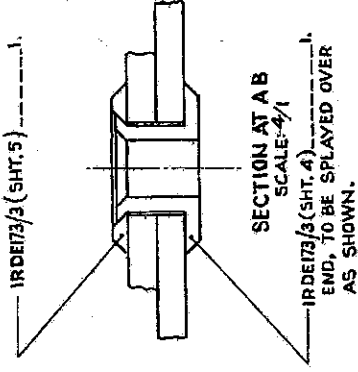
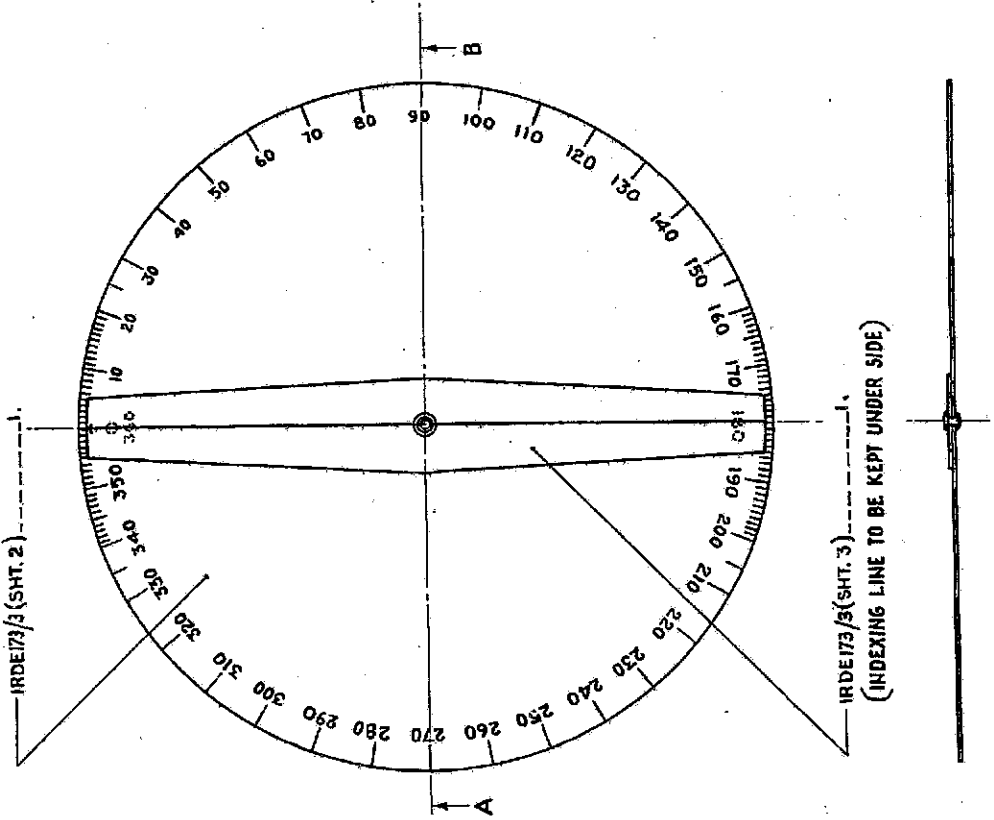
CHD. BY:- Sd/-
CHD. BY:- Sd/-
DATE:- 9-7-76

RE-TRACED AT CII, D.DUN

TRACED BY:- N. KUMAR
CHD. BY:- Sd/-
DATE:- 27.6.99

DRAWN TRACED		APPROVED
Sd/-	Sd/-	Sd/-
CHECKED		FOR DIRECTOR
Sd/-	Sd/-	IRDE
		DEHRADUN.
SCALE:-	DATE:- 10-10-64	
D.C.(D): 3604-I, DRG. METRICISED & SEALED IN SUPERSESSION OF EXISTING ONE.		
AMENDMENTS		SIG. DATE
MATL:-		
FINISH:-		
GRAPH, CHARGE-3		
DRG.No.		12-77
IRDE 173/2 (METRIC)		
CAT/PT.No.		
1220-000037		
2-SHEETS	SHEET-2	

FOR EXPLANATION OF DIMENSIONING ETC, SEE CH. TECH. INSTRUCTIONS No. 1
DIMENSIONS ARE IN mm.



DRG. METRICISED AT CL, DEHRA DUN
CHECKED BY: *[Signature]*
CHECKED BY: *[Signature]*
DATE: 24.7.16

D. C. (I) - 0380-I (P), 1008-I, 3604-I.

FOR VALIDE ONLY
Date of Issue 23/12/19
18/08/20

DRAWN	TRACED	APPROVED
CHECKED	FOR DIRECTOR	
SCALE- 1/2	DATE- 10.10.64	
DRG. No. IRDE 173/3 (METRIC)		
CAT/PART No. 1220 - 000035		
5- SHEETS SHEET-1		
SIG.	DATE	
	1.8.77	
	4.11.68	
	11.5.68	
	5.1.66	
AMENDMENTS		
MATERIAL - SEE OTHER SHEETS		
FINISH - SEE OTHER SHEETS		
PROTRACTOR, CIRCULAR		

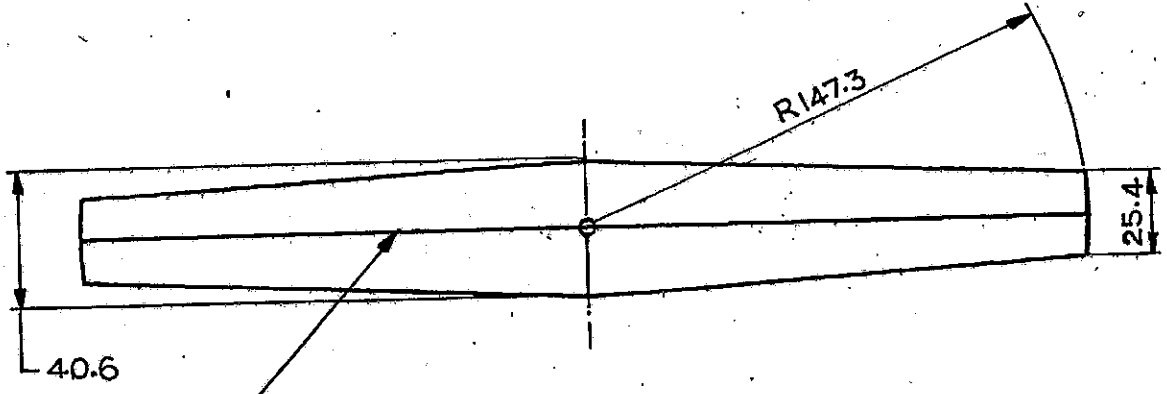
(158)

49

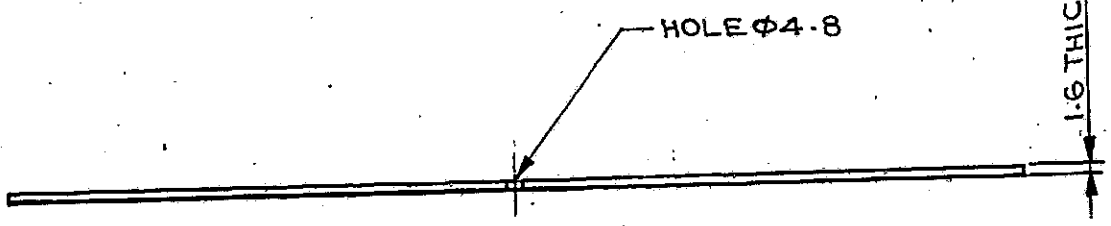
FOR EXPLANATION OF DIMENSIONING ETC, SEE CII TECH. INSTRUCTIONS No. 01
 THIRD ANGLE PROJECTION
 DIMENSIONS ARE IN m.m.

37/13

D.C.(1): 0380-I(P), 1808-I, 3604-I,



0.25 THICK LINE TO BE ENGRAVED UNDER SIDE OF THE CURSOR AND FILLED IN WITH BLACK.



FOR ...
 Date of Issue: 23/12/19...

12/10/10
 Ref

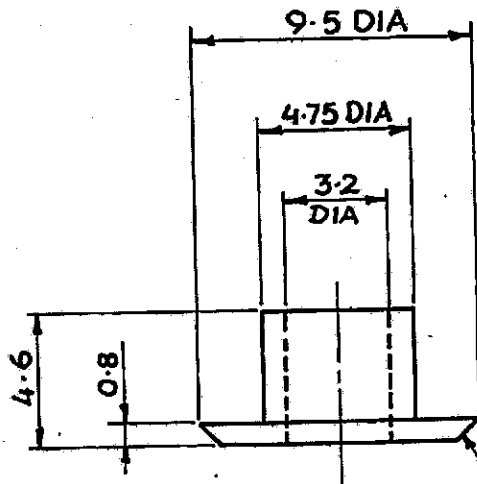
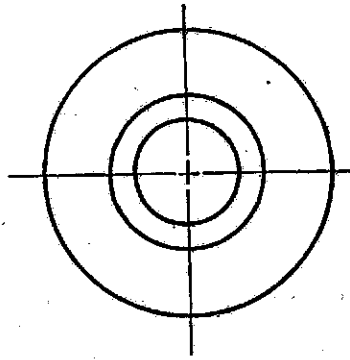
CURSOR

DRG. METRICISED AT CII, D. DUN.
 CHD. BY: Sd/-
 DATE: 24.7.76

RE-TRACED AT CQA(1), D. DUN.
 TRACED BY: N. KUMAR
 CHD. BY: Sd/-
 DATE: 16.6.99

			DRAWN	TRACED	APPROVED
			Sd/-	Sd/-	Sd/-
D.C.(1): - 3604-I, DRG. METRICISED AND SEALED IN SUPERSESSION OF EXISTING ONE.	Sd/-	1.8.77	- CHECKED		FOR DIRECTOR
D.C.(1): - 1808-I, DRG. SEALED	Sd/-	4.11.68	Sd/-	Sd/-	IRDE D. DUN.
D.C.(1): - 0380-I (P), DRG. PROV. SEALED.	Sd/-	11.5.68	SCALE: 1/2		DATE: 10.10.64
93006/TD-17 DT. 7.10.65 CAT/PT. No. 1220-000035ADDED	Sd/-	5.1.66	DRG. No.		
AMENDMENTS			IRDE 173/3 (METRIC)		
MATERIAL: PERSPEX (TRANSPARENT)			CAT/PT. No.		
FINISH: CLEAN			1220-000035		
PROTRACTOR, CIRCULAR			5 SHEETS SHEET-3		

FOR EXPLANATION OF DIMENSIONING ETC., SEE CII TECH. INSTRUCTIONS No. 01.
THIRD ANGLE PROJECTION DIMENSIONS ARE IN mm.



CHAMFERED AT 45°

FOR TRADE USE

Date of issue: 28/12/77

12/109/020 Rji

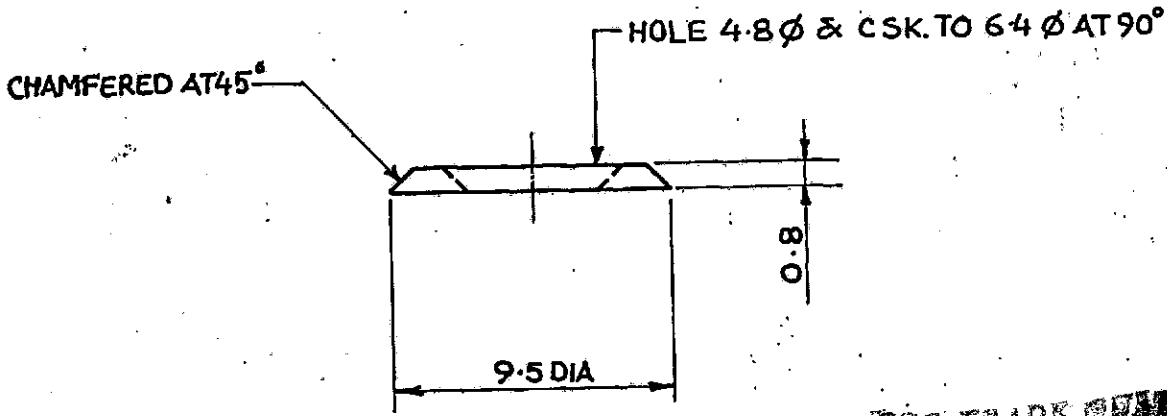
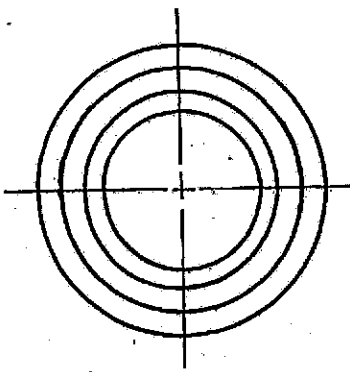
EYE, LET

D.C.(I):- 0380-I(P), 1808-I, 2516-I, 3604-I /
 DRG. METRICISED AT CII DEHRADUN.
 CHECKED BY:- Sd/-
 CHECKED BY:- Sd/-
 DATE:- 24.7.76

RETRACED AT COA(1) DEHRADUN.
 TRACED BY:- CKR/Sd/-
 CHECKED BY:- Sd/-
 DATE:- 7.6.77

D.C.(I):- 3604-I. DRG. METRICISED & SEALED IN SUPERSESSION OF EXISTING ONE		Sd/-	1-8-77	DRAWN	TRACED	APPROVED
(b) D.C.(I):- 2516-I. MATL. SPECN. AMENDED		Sd/-	7-11-72	Sd/-	Sd/-	Sd/-
D.C.(I):- 1808-I. DRG. SEALED.		Sd/-	4-11-68	CHECKED		FOR
D.C.(I):- 0380-I(P). DRG. PROV. SEALED		Sd/-	11-5-68	Sd/-	Sd/-	DIRECTOR.
(a) 93006/TD-17 DT 7-10-65 CAT/PT No. 1220-000035 ADDED		Sd/-	5-1-66	SCALE:- 4:1		IRDE DEHRADUN
AMENDMENT		SIG	DATE	DATE:- 10-10-64		
MATL:- BRASS, 15:319/Cu Zn 38 Pb3		(b)		DRG. No.		
FINISH:- DULL BLACK BRONZED				IRDE 173/3 (METRIC)		
PROTRACTOR, CIRCULAR				CAT/PART No. (a)		
				1220-000035		
				5 SHEETS		
				SHEET 4		

FOR EXPLANATION OF DIMENSIONING ETC, SEE CII TECH. INSTRUCTIONS No. 01.
THIRD ANGLE PROJECTION DIMENSIONS ARE IN mm.



FOR TRADE COPY
Date of Issue 22/11/1964

RING

D.C. (1):- 0380-I(P), 1808-I, 3604-I.

DRG. METRICISED AT CII DEHRADUN.
CHECKED BY:- Sd/-
CHECKED BY:- Sd/-
DATE :- 24-7-76

RETRACED AT CQA(C) DEHRADUN.
TRACED BY:- Sd/-
CHECKED BY:- Sd/-
DATE :- 9.6.99

			DRAWN Sd/-	TRACED Sd/-	APPROVED Sd/-
			CHECKED Sd/-	CHECKED Sd/-	FOR DIRECTOR IRDE DEHRADUN
D.C. (1):- 3604-I. DRG. METRICISED & SEALED IN SUPERSESSION OF EXISTING ONE	Sd/-	1-8-77	SCALE:- 4:1		DATE 10-10-64
D.C. (1):- 1808-I. DRG. SEALED	Sd/-	4-11-68	DRG. No.		
D.C. (1):- 0380-I(P) DRG. PROV. SEALED	Sd/-	11-5-68	IRDE 173/3 (METRIC)		
(A) 93066/ID-17 DT 7-10-69 CAT/PART No. 020331 1220-000035 ADDED	Sd/-	5-1-66	CAT/PT. No. (a)		
AMENDMENTS	SIG	DATE	1220-000035		
MATL:- BRASS, IS: 319/Cu Zn 38 Pb 3			5 SHEETS		
FINISH:- DULL BLACK BRONZED.			SHEET 5		
PROTRACTOR, CIRCULAR					

