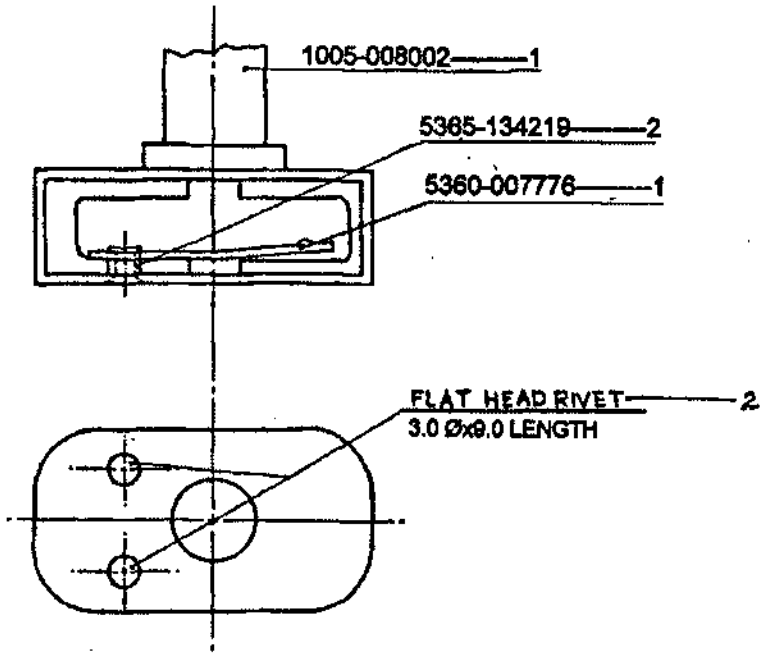


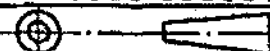
ON
D.S. CAT. 1005-558853

DRAWING CONVENTIONS CONFORM TO JSG - 0104
DIMNS. ARE IN mm. GEN. TOL. "MEDIUM" TO IS: 2102



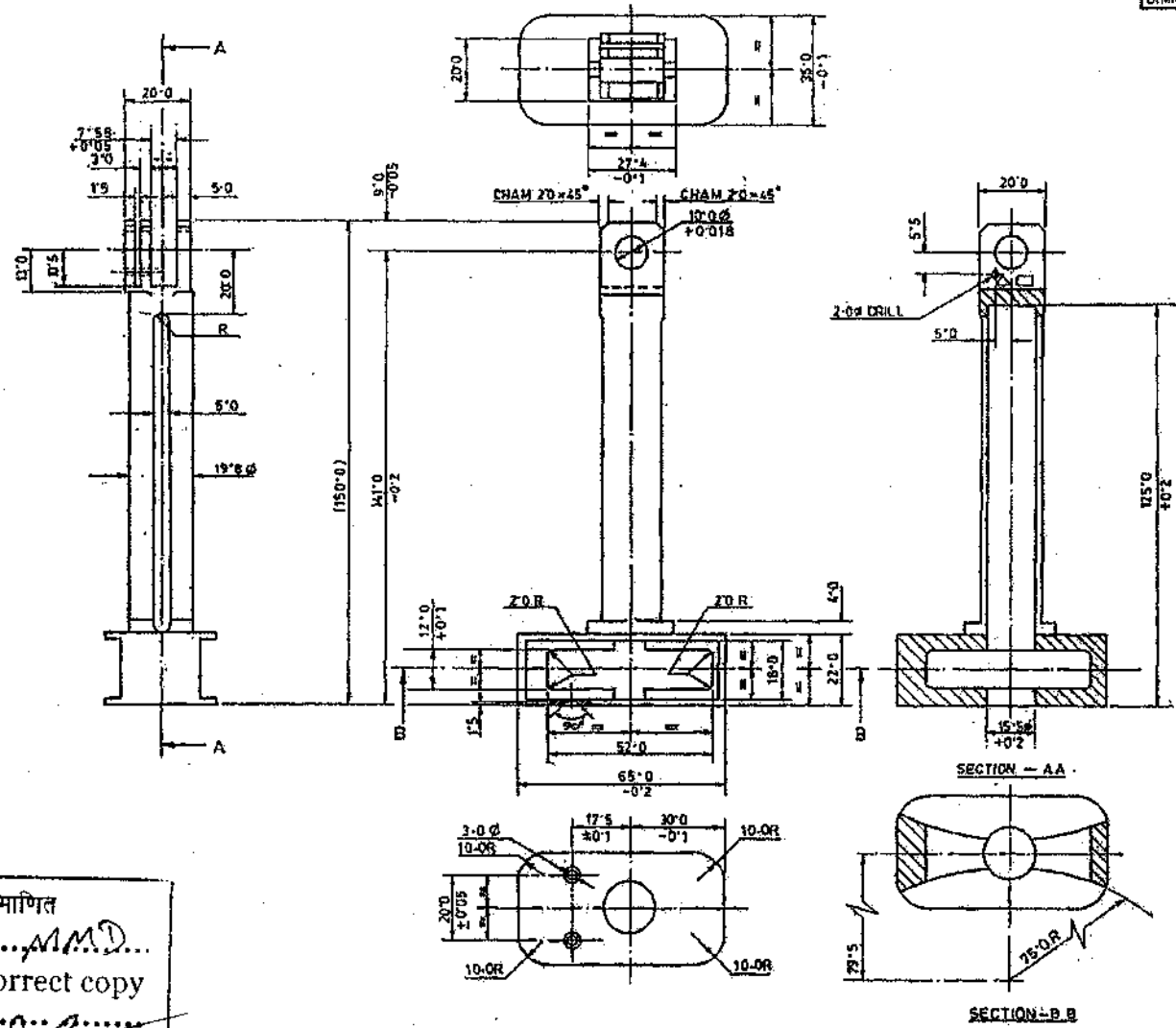
प्रमाण की सही प्रमाणित
कॉपी प्रमाणित.....*M.M.D.*.....
Certified as correct copy
of drg. on.....*SP*.....
क. कार्यशाला प्रबन्धक
Jr. Works Manager
मानक प्रमाणित
STANDARD COPY

CERTIFIED COPY OF THE
STORE DRG./PART DRG./Sch/
SPEC/NOTE SH. T.
DATE 10-12-09 *SP*

				DRN. <i>Handwritten</i>	CHD. <i>Handwritten</i>	TRD.	COMP.	AHSP. CQA(SA), ICHAPUR
				SCALE :- 1:1	EST. MASS :-			ASSY. 1005-008001
				DT. 20-10-08	<i>Handwritten</i> I/C D.O.	DT. 20-10-08.	<i>Handwritten</i> FOR QA(SA)	
				MATERIAL :-				DGNRS REF. ARDE SK-3302/7
20-10-08	26437-5A	DRG. SEALED PROV.		ZONE	I/C D.O.	G.O.		PART NO.
DATE	AUTHY.	BRIEF RECORD		SIGN.		HT/HARDNESS :-		DRG. NO.
SEALED :- PROV. SEALED D.C. NO. 26437-5A, DT. 20-10-08						PROTECTIVE FINISH :-		D.S. CAT. NO. 1005-558853
NOMENCLATURE :- HOUSING & SPRING, LEAF RIVETING								

DR. CAT. 1005-008002

DRAWING CONVENTIONS CONFORM TO ISG:0104
DIMNS. ARE IN mm. GEN. TOL. COARSE 15:2:101



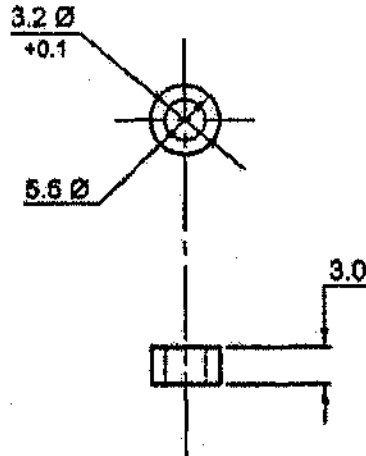
NOTE:-
REMOVE ALL SHARP EDGES AND BURRS
MARKING NOTE:-
TO BE MARKED ON COMPONENT BY
STAMPING IN 2mm LETTER SIZE
△ MANUFACTURER'S CODE
□ Yr. of Mfg.

आपके द्वारा की गयी प्रमाणित
प्रतिलिपि दिनांक.....*M.M.D.*.....
Certified as correct copy
of drg. on.....
क. कार्यशाला प्रबन्धक
Jr. Works Manager
मानव प्रकीर्ण
STANDARD CELL

DRN. 20-10-08	ICPD. 20-10-08	TRD. 20-10-08	COMP. 20-10-08	AHSR QA(SA)CHAPUR
SCALE: 1:1		EST. MASS: APPROVED.		ASSY. 1005-55853
09-10-16 269557 MATERIAL AMENDED				DRG. NO. 25008-SA & 26308-SA
20-10-08 16437-5A DRG. SEALED PROV.				PREVIOUS DC. NOS. 25008-SA & 26308-SA
DATE: AUTHY. BREF REDRO.	ZONE	COPY	COPY	MATERIAL: IS:5517-1993 DESIGNATION 55CB
SCALE: PROV. SEALED DC. NO. 26437-5A, DT. 20-10-08		10.0R	6.0	HV/HARDNESS: TO BE HARDENED & TEMPERED TO 300-350HV
NOMENCLATURE: HOUSING, MONOPOD				FINISH: PROTECTIVE PHOSPHATE TO SPECN. JSS:0465-01:1994 CLASS-0 (ACCELERATED), OIL FINISH

5365-134219

D.S.CAT. NO. DRAWING CONVENTIONS CONFORM TO JSG:0104
DIMNS ARE IN mm. GEN. TOL. 'COARSE' IS:2102



आरेखण की सही प्रमाणित
प्रतिलिपि निर्गत... *MMD*...
Certified correct copy
of drg. on... *[Signature]*...

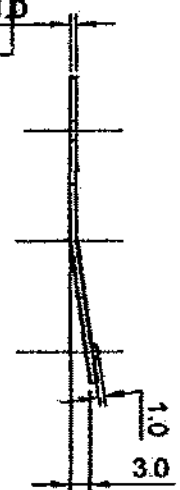
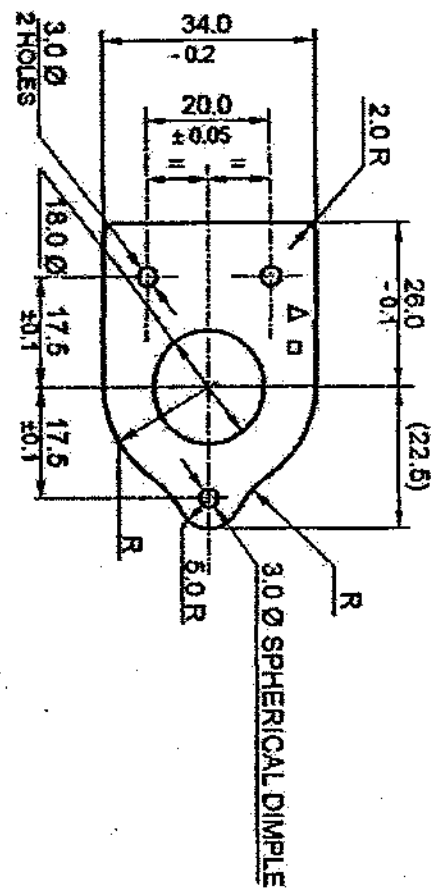
क. कार्यशाळा प्रबन्धक
Jr. Works Manager
मालक प्रकॉष्ठ
STANDARD CELL

**NOTE:-
REMOVE ALL SHARP EDGES AND BURRS.**

28.09.16	26951-SA	MATERIAL AMENDED.		<i>[Signature]</i>	<i>[Signature]</i>
20-10-08	26437-SA	DRG. SEALED FROM		<i>[Signature]</i>	<i>[Signature]</i>
DATE		AUTHY.		PREVIOUS DC No. 26308-SA	COPY COPY
BRIEF RECORD				ZONE	I/C/DO G.O.
SEALED :- PROV. SEALED D.C. NO. 26437-SA, DT. 20-10-08					
DRN. <i>[Signature]</i>	CHD. <i>[Signature]</i>	TRD.	COMP.	AHSP. CQA(SA) ICHAPUR	
SCALE :- 2:1		EST. MASS		ASSY. 1005-558853	
DT. 20-10-08.		APPROVED I/C DO. DT. 20-10-08.		FOR CQA(SA)	
MATERIAL :- IS: 5517-1993, DESIGNATION 55 C8.					
H.T./HARDNESS :- TO BE HARDENED & TEMPERED TO 300-350 VPN.				DGNR'S. ARDE SK 3302 REF. DET No. 8	
PROTECTIVE PHOSPHATE TO SPECN. JSS : 0465 - 01 : FINISH :- 1994 CLASS II (ACCELERATED), OIL FINISH.				PART No.	
NOMENCLATURE :- SPACER				DRG. No.	
				D.S.CAT. 5365-134219 No.	

922700-0935

ON DRG. CONVENTIONS CONFORM TO JSG - 0104
 ALL DIMENSIONS ARE IN MM. GEN. TOL. MEDIUM TO IS: 2102



आरेखण की संती प्रमाणित
 प्रतिलिपि विशिष्ट...
 Certified as correct copy
 of drg. on.....

Jr. Works Manager
 प्रमुख प्रकल्प
 STANDARD CELL

NOTES :- REMOVE ALL SHARP EDGES AND BURRS.
 MARKING NOTE :-
 TO BE MARKED ON COMPONENT BY STAMPING IN 2 mm LETTER SIZE
 Δ MANUFACTURERS CODE
 □ Yr. of Mfg.

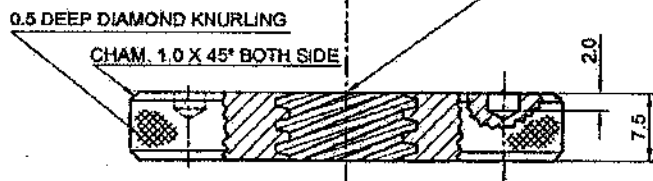
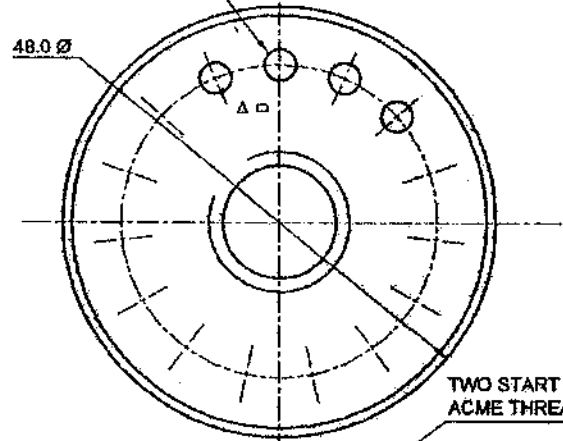
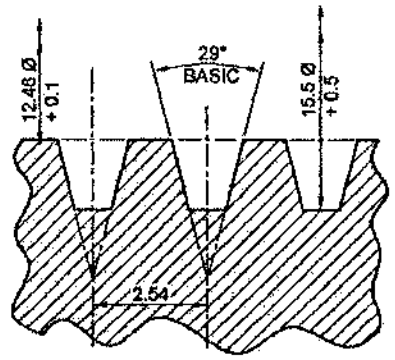
21.11.16/2697384		MATERIAL AMENDED.			
20-10-08	244375A	DRG. SEALED PROV.			
		PREVIOUS D/C Nos 25902-SA & 26308-SA			
DATE	AUTHY	BRIEF RECORD			
SEALED :-	D.C. No. 24437-SA. Dt. 20-10-08.				
DRN. JOGAWAN	CHD. SKP	TRD.	COMP.		
SCALE:-	1:1	EST. MASS			
DT. 20-10-08.		APPROVED			
		ICD.O. DT. 20-10-08.			
D MATERIAL :- IS: 7226-1974 DESIGNATION C 80.		AHSP COA(SA), ICHAPUR		ASSY	1005-558853
H. T/HARDNESS :- HARDENED & TEMPERED 300 TO 350 VPN		DGN'R'S ARDE SIK 3302		REF.	DET NOS
PROTECTIVE FINISH:- PHOSPHATE TO SPECN. JSS:0465-01:1894 CLASS - II (ACCELERATED), OIL FINISH.		PART NO.		DRG. NO.	
NOMENCLATURE:- SPRING LEAF MONOPOD		D.S. CAT. NO.		5360-007776	

6

No. 6310-024602
D.S.CAT.

DRAWING CONVENTIONS CONFORM TO JSG : 0104.
DIMNS. ARE IN mm. GEN. TOL. "MEDIUM" IS : 2102.

15 HOLES, 3.5 Ø SHOWN
EQUI SPACED ON 35.0 P.C.D.



NOTE
REMOVED ALL SHARP EDGES AND BURRS.

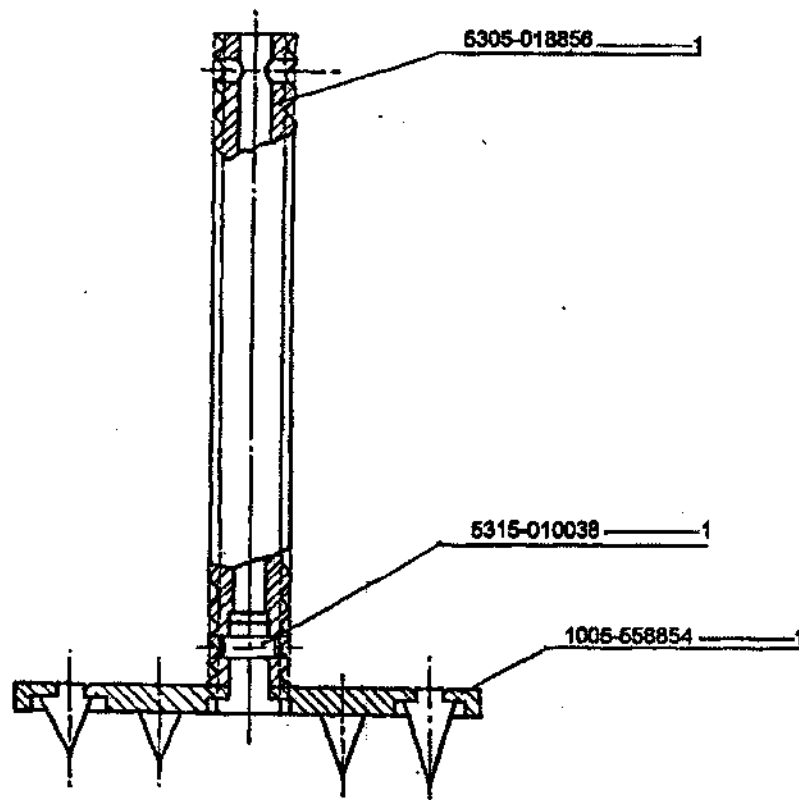
MARKING NOTE:-
TO BE MARKED ON COMPONENT BY STAMPING 2 mm. LETTER SIZE
Δ MANUFACTURE'S CODE
□ Yr. of mfg.

भारत की सही प्रमाणित
निर्माण प्रमाणित
Correct copy
on this is correct copy
MMD
J.S. Works
STANDARD

DRN. R.K.B. CHD. D.S. TRD. COMP.		AHSP CQA(SA),ICHAPUR	
SCALE :- 2:1 & 10:1		EST.MASS APPROVED	
DT. 20-10-08		MATERIAL - IS: 5517-1993, DESIGNATION 42 Cr 4 Mo 2.	
PREVIOUS D.C. NOS. 25906-SA & 26308-SA		DGNR'S REF. ARDE SK 3302	
DATE AUTHY BRIEF RECORD		PART No.	
SEALD:- PROV SEALED DC No. 26437-SA DT. 20-10-08.		DRG. No.	
NOMENCLATURE:-		D.S.CAT. No. 5310-024602	
NUT ELEVATING		H.T./HARDNESS:- TO BE HARDENED & TMPERED TO 400-450 VPN	
SIGN		PROTECTIVE FINISH :- PHOSPHATE TO SPECN. JSS:0465-01: 1994 CLASS II (ACCELERATED, OIL FINISH.	

998899-9001
D.S.CAT. 1005-558855

DRG. CONVENTIONS CONFORM TO JSG-0104.
DIMNS. ARE IN mm. GEN. TOL. 'MEDIUM' IS: Z102.



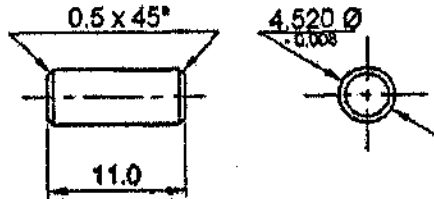
आरेखण की सही प्रमाणित
प्रतिलिपि दिनांक.....*MMD*.....
Certified as correct copy
of d.g. no.
क. कार्यशाला प्रबन्धक
Jr. Works Manager
मानक प्रकोष्ठ
STANDARD CELL

CERTIFIED COPY OF THE
STORE DRG/GAUGE DRG/SCH/
SPECN/NOTE SHI.
DATE: 12.12.09
CD

				DRN. <i>5305-018856</i>	CHD. <i>MMD</i>	TRD.	COMR	AHSP
				SCALE:- 1:1		EST. MASS:-		CQA(SA)-ICHAPUR
				DT. 20-10-08	<i>Act</i> I/C:DO	APPROVED.	<i>R</i> FOR CQA(SA)	ASSY. 1005-008001
				MATERIAL:-				DGNR'S ARDE SK-3302/13
20-10-08	26437-5A	DRG. SEALED PROV.			<i>Act</i>			REP.
DATE	AUTHY.	BRIEF RECORD		ZONE	I/C:DO	G.O.		PART NO.
SEALED:- PROV. SEALED D.C. NO. 26437-5A, DT. 20-10-08				SIGN.		H.T./HARDNESS:-		DRG. NO.
NOMENCLATURE:- SCREW ELEVATING ASSY.						PROTECTIVE FINISH:-		D.S. CAT. NO. 1005-558855

5315-010038

DRAWING CONVENTIONS CONFORM TO JSG:0104
 DIMNS ARE IN mm. GEN. TOL. 'COARSE' IS:2102



आरेखण की सही प्रमाणित
 प्रतिलिपि निम्नलिखित...
 Certified correct copy
 of drg. no.

क. कर्मचारी प्रबन्धक
 Jr. Works Manager
 मानक प्रकोष्ठ
 STANDARD CELL

NOTE :- REMOVE ALL SHARP EDGES AND BURRS

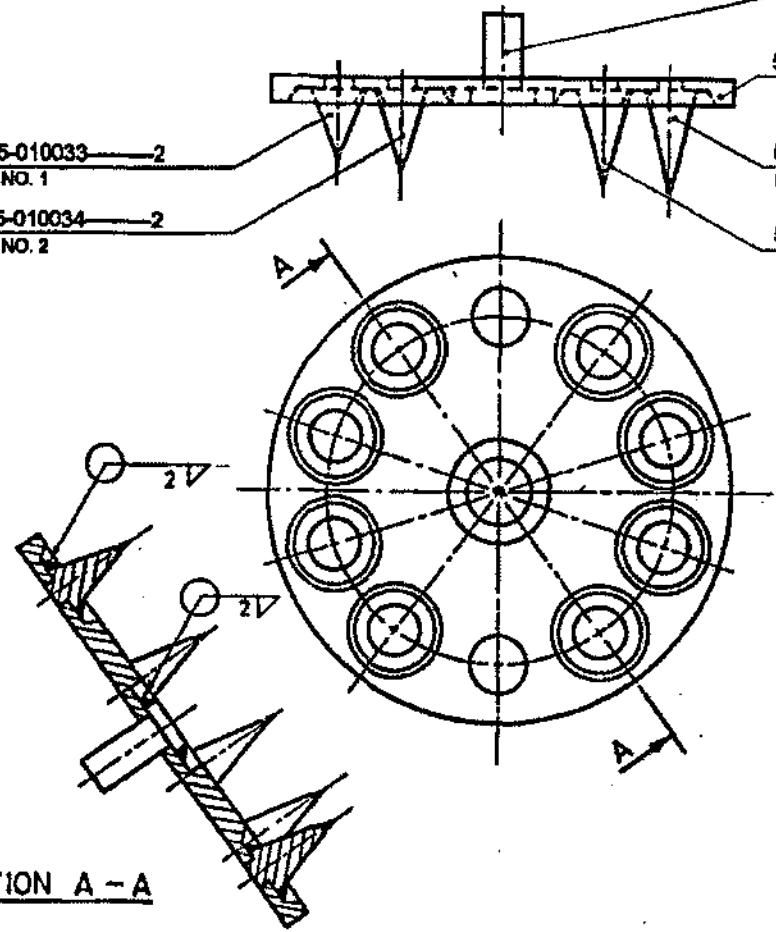
26.09.16	269473A	MATERIAL AMENDED				
20-10-08	26437-5A	DRG SEALED PROV. PREVIOUS D.O. No. 26300-5A				
DATE	AUTHY.	BRIEF RECORD	ZONE	I/C/DO	G.O.	
SEALED :- D.O. No. 26437-5A Dr. 20-10-08			SIGN			
DRN. No.	CHD.	SKP	TRD.	COMP.	AHSP.	COA(SA) (CHAPUR)
SCALE :- 2:1	APPROVED		FOR COA(SA)		ASSY.	1005-558855
Dr. 20-10-08		Dr. 20-10-08				
MATERIAL :- IS:5517-1993, DESIGNATION 40 C8.					DGNR'S. ARDE SK-3302	
H.T./HARDNESS :- HARDENED & TEMPERED TO 300-320 V.P.N.					REF. DET. No. 12	
PROTECTIVE :- PHOSPHATE TO SPECN. JSS: 0465-01:1994					PART No.	
FINISH CLASS II (ACCELERATED), OIL FINISH.					DRG. No.	
NOMENCLATURE :- PIN					D.S.CAT. 5315-010038	
					No.	

D.S. CAT 1005-558854 ON

DRAWING CONVENTIONS CONFORM TO JSG-0104
DIMNS. ARE IN mm. GEN. TOL. 'MEDIUM' IS:2102

5315-010033 — 2
PEG NO. 1
5315-010034 — 2
PEG NO. 2

5315-010039 — 1
5340-016819 — 1
5315-010036 — 2
PEG NO. 4
5315-010035 — 2
PEG NO. 3



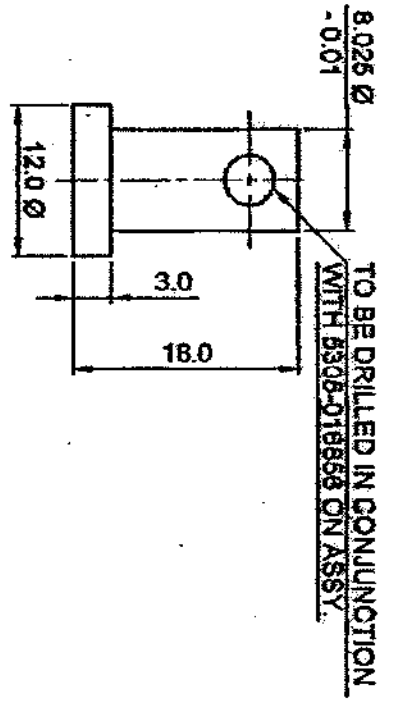
SECTION A - A

आरेक्षण की सही प्रमाणित
प्रतिलिपि दिनांक.....*M.M.P.*.....
Certified as correct copy
of *J.P.*
क. बरधन प्रसाद
Jr. Works Manager
मानक प्रकी 45
STANDARD CELL

CERTIFIED COPY OF THE
STORE DRG/GAUGE DTS/Sch/
SPECN, NOTE SHIT.
DATE: 10/2/09
[Signature]

20-10-08	26437-SA	DRG. SEALED PROV.				DRN. <i>[Signature]</i>	CHD. <i>[Signature]</i>	TRD.	COMP.	AHSP. CQA(SA) ICHAPUR
DATE AUTHY.						SCALE :- 1:1		EST. MASS.		ASSY. 1005-558855
BRIEF RECORD						DT. 20-10-08		APPROVED		
SEALED:- PROV. SEALED D.C. NO. 26437-SA, DT. 20-10-08						ZONE I/C/D.O. G.O.		DT. 20-10-08 FOR CQA(SA)		DGNR'S ARDESK 3302/10 REF.
SIGN.						MATERIAL :-		HT./HARDNESS :-		PART NO.
NOMENCLATURE :- SHOE ASSY. (WELDING)						PROTECTIVE FINISH :-		PHOPHATE TO SPECN. JSS:0465-01:1994 CLASS B (ACCELERATED) OIL FINISH		ORG. NO.
										D.S. CAT. NO. 1005-558854

630010-9163 D.S.CAT. 5315-010039
 DRAWING CONVENTIONS CONFORM TO JISG-0104
 DIMENSIONS ARE IN mm. GEN. TOL. COARSE IS 2102



22

आरेखण की सही प्रमाणित
 प्रमाणित आरेखण..... **NOTE:..REMOVE ALL SHARP EDGES AND BURRS.**
 Correct copy as contract copy
 of drawing.....

Jr. World
 5315-010039

26-09-16	26947-51	MATERIAL AMENDED						
20-10-08	24237-51	DRG. SEALED FROM PREVIOUS D.O. No. 26944						
DATE	AUTHY	BRIEF RECORD	ZONE	W/C	D.O.	G.O.	SIGN	
SEALED :-	D.O. No. 26437-51	Dt. 20-10-08.						
DRN. SK.	CHD. SK.	TRD. SK.	COMP.	AHSP.	COA(SA)	ICHAPUR		
SCALE :-	2:1	EST. MASS						
Dt. 20-10-08.	APPROVED			ASSY.	1805-55854			

MATERIAL :- 19: 5617-1999, DESIGNATION 42 Cr. 4 M2.
H.T./HARDNESS :- HARDENED & TEMPERED TO 300-350 VFN
PROTECTIVE PHOSPHATED TO SPECN JSS:0465-01:1994
FINISH :- CLASS II (ACCELERATED), OIL FINISH.

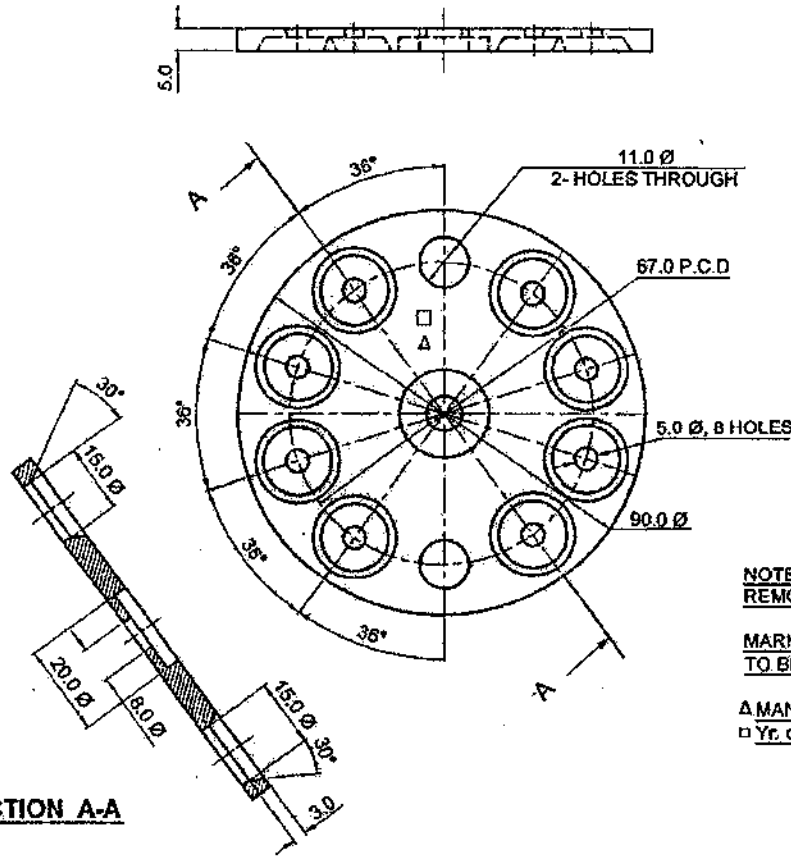
NOMENCLATURE :- **SHOE PIN**
 DRG. No. D.S.CAT. 5315-010039



618910-0769

D.S.CAT. NO.

DRAWING CONVENTIONS CONFORM TO JSG : 0104
DIMNS. ARE IN mm. GEN. TOL. "MEDIUM" IS : 2102.



SECTION A-A

आरेखण के प्रति प्रमाणित
प्रतिलिपि के लिए M.M.D.....
Certified correct copy
of drawing.....
Jr. Works Manager
मानक प्रबंधक
STANDARD CELL

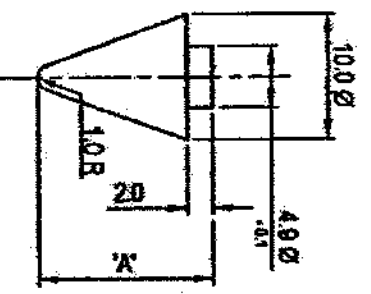
NOTES:-
REMOVE ALL SHARP EDGES AND BURRS.

MARKING NOTE:-
TO BE MARKED ON COMPONENT BY STAMPING IN 2mm LETTER SIZE.

A MANUFACTURER'S CODE
□ Yr. of mfg.

		DRN. SAMANTA	CHD. SKP	TRD.	COMP.	AHSP CQA(SA) ICHAPUR
		SCALE:- 1:1		EST. MASS		ASSY. 1005-558854
05-10-16	26958-SA	MATERIAL AMENDED		DI 20-10-08	IC, D.O.	DI 20-10-08 FOR CQA(SA)
20-10-08	26437-SA	DRG SEALED PROV.		MATERIAL:- IS:5517 - 1993 DESIGNATION 55 C8		DGNER'S REF. ARDE SK 3302 DRY NO:15
DATE AUTHY		BRIEF RECORD		H.T. HARDNESS:- 300 TO 350 HV		PART No.
SEALED:-		PROV. SEALED. D.C. NO. 26437-SA, DT. 20-10-08		PROTECTIVE FINISH:-		DRG No.
NOMENCLATURE:-		PLATE, SHOE		PHOSPHATED TO SPECN JSS : 0465-01:1994 CLASS II (ACCELERATED) OIL FINISH		D.S.CAT. No. 5340-016819

930010-9139 930010-9139 'ON DRAWING CONVENTIONS CONFORM TO JISG:0104
 430010-9139 430010-9139 'V.C.S.D. DIMENS ARE IN MM. GEN TOL. MEDIUM IS:2102



D.S. CAT. No.	Sr. No.	'A'
5315-010033	PEG. No.1	14.0
5315-010034	PEG. No.2	16.0
5315-010035	PEG. No.3	18.0
5315-010036	PEG. No.4	20.0

संलग्न की शीत प्रतिमा
 मर्यादा प्रतिमा... M.V.P.D.....
 Current copy of this
 M.V.P.D. is retained copy
 of this
 Jt. Works Manager
 संलग्न प्रतिमा

STANNOTE: REMOVE ALL SHARP EDGES AND BURRS.

26.09.16 26947SA MATERIAL AMENDED

20.10.08 26947A DRG. BEHELD FROM

PREVIOUS D.C.No. 2690-3A

DATE AUTHY. BRIEF RECORD

SEALED :- DC No. 26437-SA DT. 20.10.08

DRN. SKP CHD. SKP TRD. COMP.

SCALE :- 2:1 EST. MASS

DT. 20.10.08 16.00 DT. 20.10.08 16.00

MATERIAL :- IS:BS17-1999, DESIGNATION 40 CB.

H.T./HARDNESS :- HARDENED & TEMPERED TO 300 - 350 VPM

PROTECTIVE :- PHOSPHATE TO SPECN. JSS : 0465 - 01 : 1994
 CLASS II (ACCELERATED), OIL FINISH.

FINISH

NOMENCLATURE :- **PEGS . SHOE**

DRG. No. 1005-558864

DGNRS. REF. ARDE SK-3302
 Dt: No. 14

PART No.

D.S.CAT. No. 5315-010033, 5315-010034
 5315-010035, 5315-010036