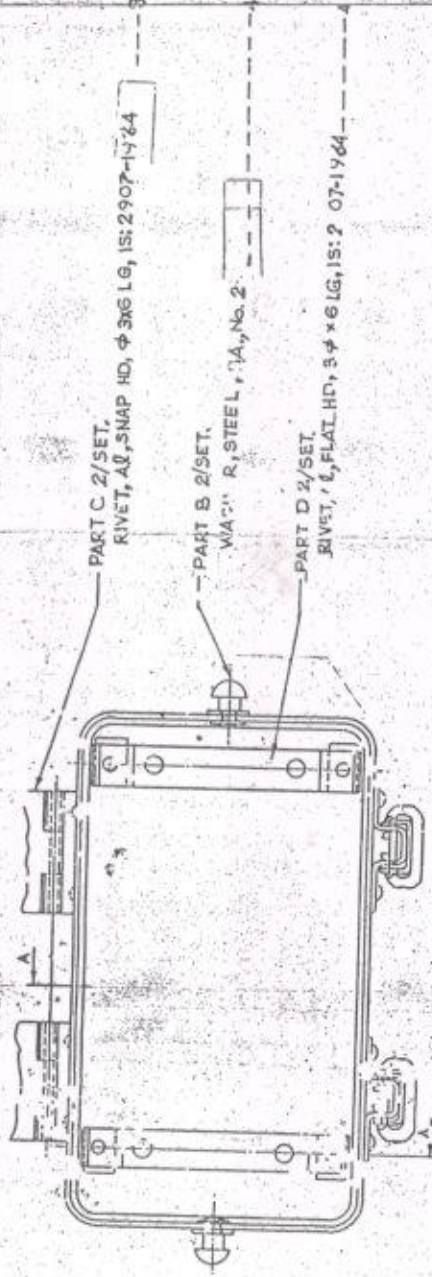
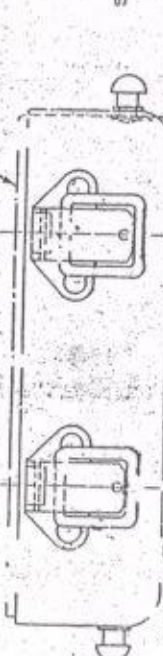


FOR EXPLANATION OF DIMENSIONING, ETC., SEE CQA(II) GUIDE NO 001-1992
THIRD ANGLE PROJECTION
DIMENSIONS ARE IN INCH



HINGE PINS OF BOTH HINGES TO BE IN ALIGNMENT AND PARALLEL WITH SIDE B, TOP OF PART E DETAIL

PART L
 VERTICAL SEAM-A, C, D, E
 BUTT JOINT, NO G.F.S.
 SEAM WITH D



SEALED: -17-7-46 C/11289

DATE & INITIALS: _____

NATURE: _____

D.C.(I): - 5589-1 - UPDATED DRG. - SEALED IN SUPERSESSION OF EXISTING ONE

FOR TRADE ONLY
Date of Issue: 03/03/2020
Ref: _____

C/T/17. NO. 4973-600283

C.I.A. (F.C) 2434

DOWN SD/- TRACED SD/- CHECKED SD/- SCALE: -1

M.R 586 A
IS-SI-2

DATE: 13 DEC-45

CASE, MORTAR SIGHT TESTING APPARATUS, MK I

DRG. UP DATED AT CQA(I) D.DEN.
 CHECKED - *Ref* CHECKED: *Ref*
 DATE: - 22-7-92 For QM II

SEALED 17-7-46

C/11289

AMENDMENTS

DATE: INITIALS: NATURE:

D.C. (D)-5589-1 - UPDATED DRG. SIALED IN SUPERSESSION OF EXISTING ONE

FOR TRADE ONLY
Date of issue 07.03.2010
Ry

CAT/STN:
4935-000793

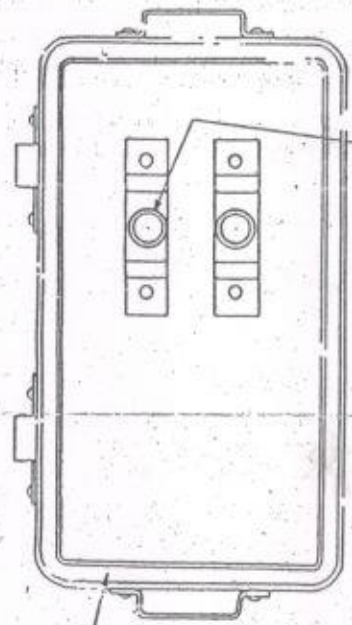
C.I.A. (F.C.) 2434

DRAWN BY: TRACED BY: CHECKED BY: FOR C.I.A.

IS-SHEETS: 1 HR. 586 A SHTS

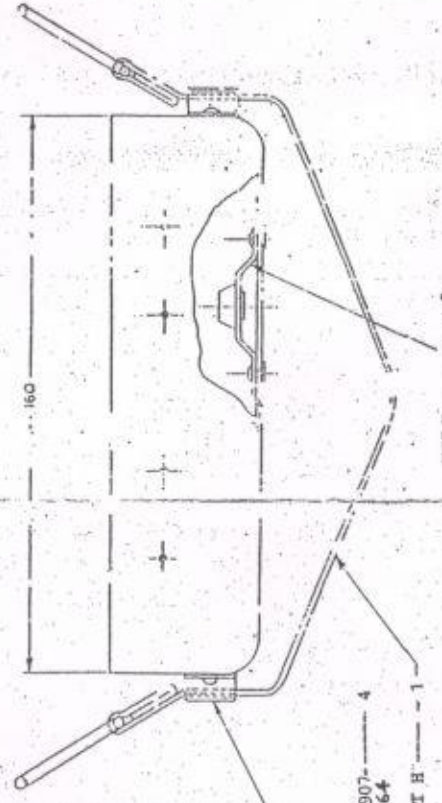
DATE: 10MAY 46

FOR EXPLANATION OF DIMENSIONING, ETC., SEE COM (I) GEN. NO 001-1952 THIRD ANGLE PROJECTION

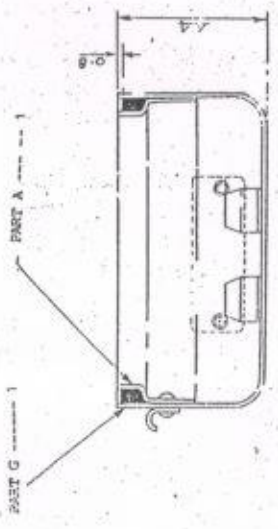


PART M (SEAL) TO BE GLUED IN CHANNEL

O.S. 53239



PART K RIVET, AL., FLAT HD., 2.5 DIAM LG. IT. 2007-1964



PART J RIVETS, AL., SNAP HD., 3 DIAM LG. IS: 2907-1964

NOTES: -
RUBBER SEALING WASHER MAY BE MOLDED IN GROOVE OR CEMENTED IN GROOVE
WHEN CASE IS CLOSED SEALING WASHER MUST BE COMPRESSED 0.8 BY SEATING PROJECTION ON LOWER HALF OF CASE
FOR FINISH SEE SA. 1
END FASTENING ON LEFT WITH 6" DIA. THROUGH PART J

UPPER HALF

CASE, MORTAR SIGHT TESTING APPARATUS, MK I

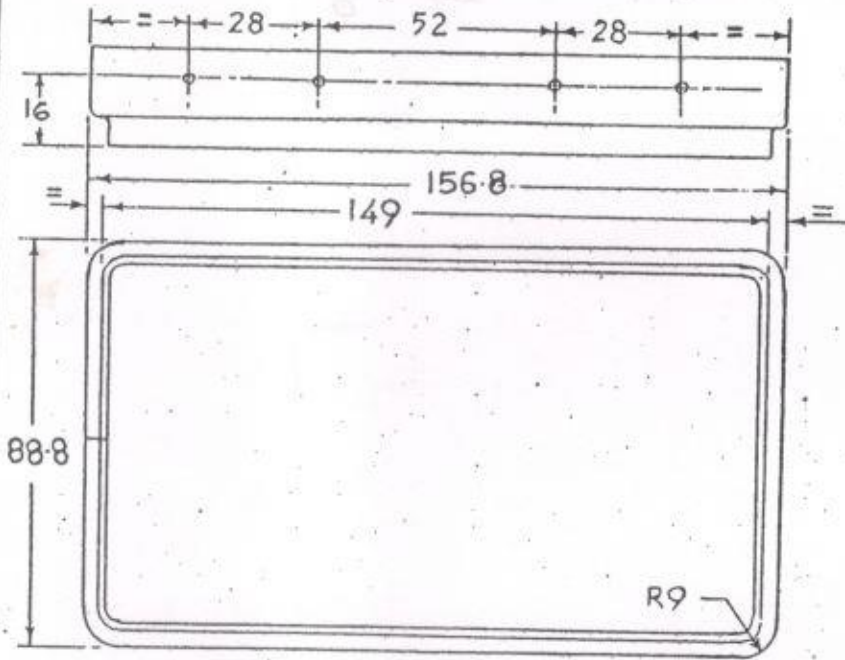
D.C. (I) 4980-SA, GII-1-8064-I, 4091-I, 5589-1.

ORG. UPDATED AT CQA(I) D. DUN. CHECKED BY: N. L. CHECKED BY: For DIM II DATE: 22.7.92

FOR EXPLANATION OF DIMENSIONING, ETC., SEE CQA(II) GUIDE NO 001-1992
 THIRD ANGLE PROJECTION
 DIMENSIONS ARE IN mm.

(A)

D.C.(I) 4989-SA, 611-I. 4091-1, 5589-I.



IN SAME PLANE

PART G SHOWN IN CHAIN LINE

FOR TRADE ONLY
 Date of Issue 03/03/2020

8 HOLES 3.3 DIA TO BE IN ALIGNMENT WITH THOSE IN PART G. & IRDE 1077/SA-4

CASE

FINISH :- ANODISED AC-5. TO IS: 1868-1982

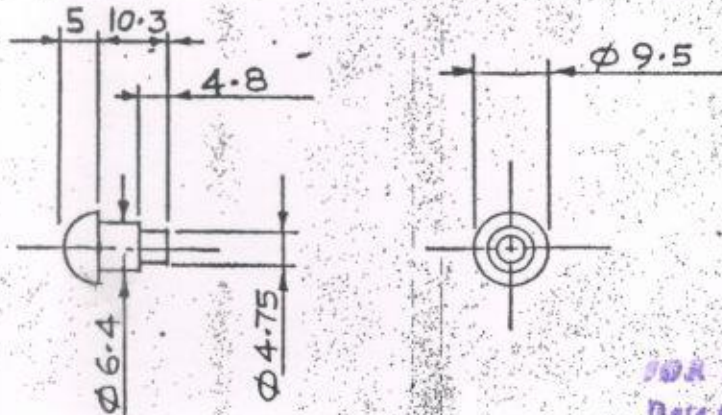
CAT/PT. No.
 4933-000283

DRG UPDATED AT CQACI DEHRADUN
 CHECKED *[Signature]* CHECKED *[Signature]*
 DATE :- 22.7.92 For QM II

		C.I.A. (F.C) 2434	
		DETAIL No 1	
		DRAWN	TRACED
		CHECKED	
		M.R. 586 A	
		15 SHEET	SHEET 4
		SCALE	SEALED
		NOT TO SCALE	17-4-46 ^{C/11289}
D.C.(I) :- 5589-I. - UPDATED DRG. SEALED IN SUPERSESSION OF EXISTING ONE <i>[Signature]</i>		16.9.92	MATL :- ALUMINIUM ALLOY SHEET 64430 WP OF IS: 737-1986
AMENDMENTS	SIG	DATE	
CASE, MORTAR SIGHT TESTING APPARATUS, MK I		13 DEC. 45	sd/ =
		DATE	FOR C.I.A

FOR EXPLANATION OF DIMENSIONING, ETC., SEE CQA(II) GUIDE NO 001-1992
THIRD ANGLE PROJECTION DIMENSIONS ARE IN mm.

(B)



FOR TRADE MARK
Date of issue 27/03/2020
Rg

RIVET

FINISH:-
PHOSPHATED CLASS A2 TO
IS: 3618-1966

CAT/PT.No.
4933-000283

		C.I.A. (F.C) 2434		DETAIL No. 1
		DRAWN J.E.B.	TRACED M.O.B.	CHECKED
		M.R. 586 A		
		15 SHEETS	SHEET 5	
		SCALE:- NOT TO SCALE	SEALED C/11289 17.7.46 sdy.	
D.C.(I):- 5589-I. - UPDATED DRG. SEALED- IN SUPERSESSION OF EXISTING ONE. <i>[Signature]</i>		DATE 16.9.92	MATL:- MILD STEEL WIRE 1/2H OF IS: 280-1978	
AMENDMENT 5		DATE	13.DEC.45 sdy.	
CASE, MORTAR SIGHT TESTING APPARATUS, MK I		DATE	FOR CIA	

D.C.(I):- 4989 SA, 6 I, 2539-I, 4091-I, 5589-I.

DRG UPDATED AT CQA(II) DEHRADUN
CHECKED:- *[Signature]* CHECKED:- *[Signature]*
DATE:- 22.7.92 For QM II