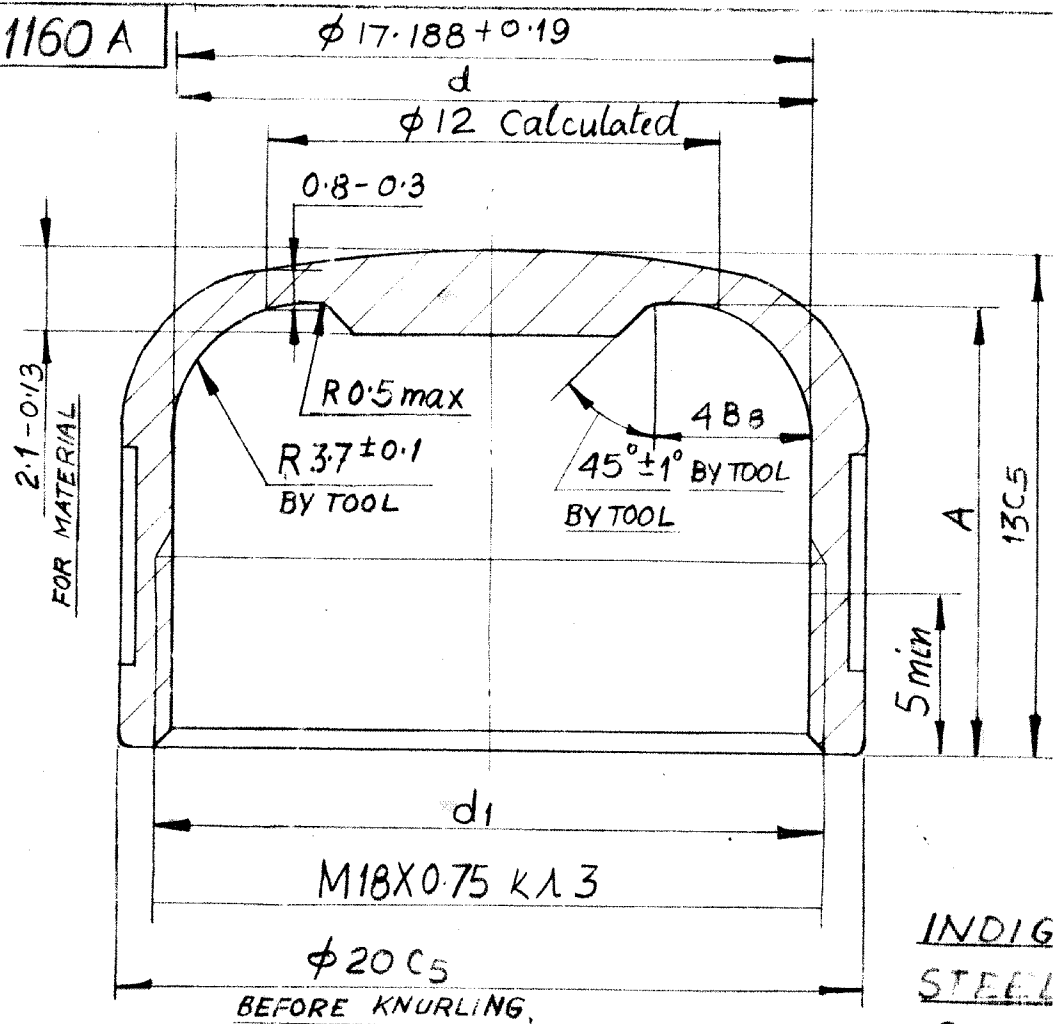
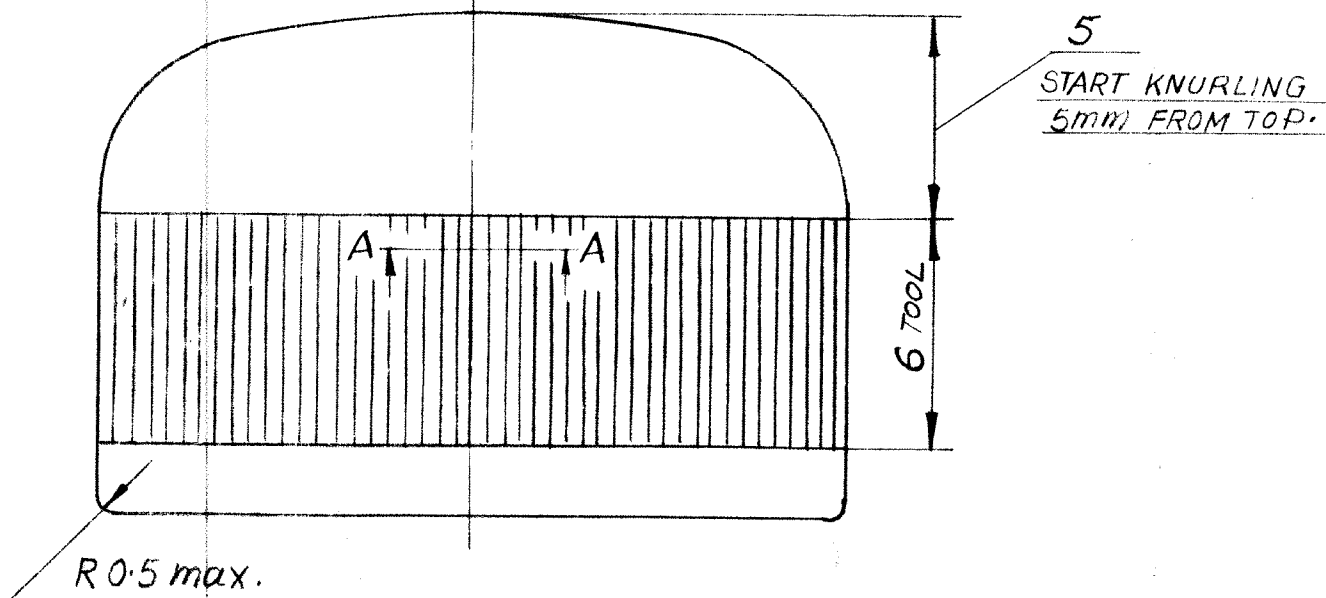


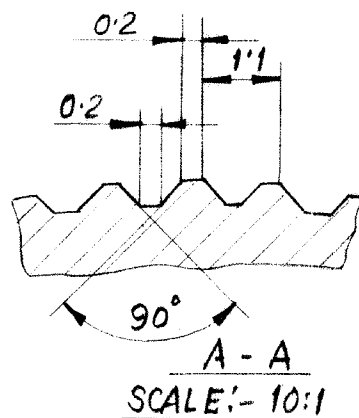
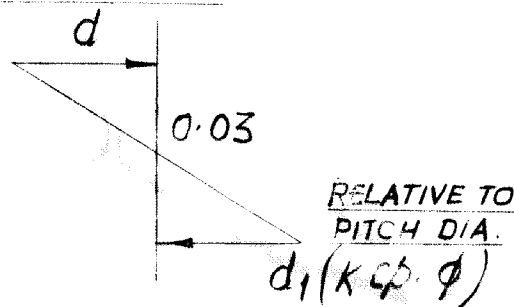
DRG NO. FS-1160 A



RADIUS OF SPHERE IS OBTAINED BY "FALL THROUGH" STAMPING WITH A FLAT FACE PUNCH.



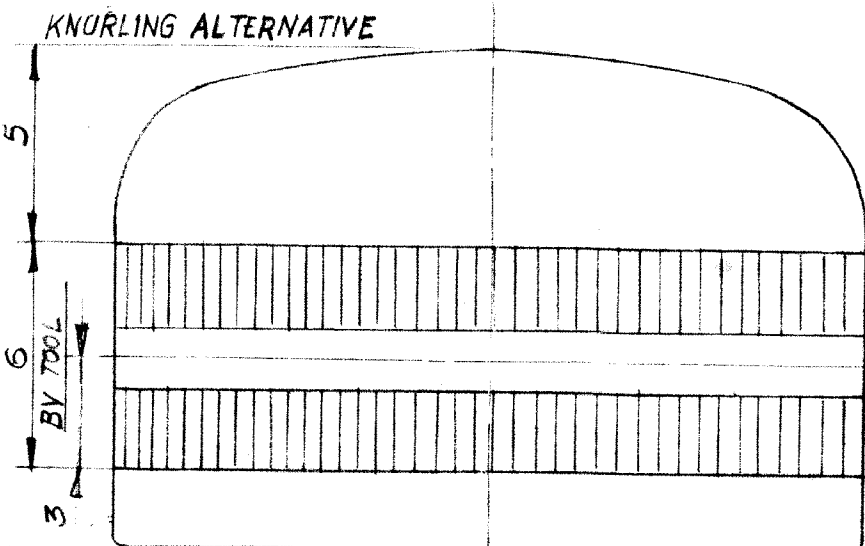
ECCENTRICITY



INDIGENOUS MATERIAL
 STEEL TO SPECN. NO.
 BS 970 Pt - I:1983:
 080M40 (IN NORMALISED
 CONDITION)
 OR BS 1449 Pt. I B -
 1962 CR-2/FF OR
 CR-3/FF
 (REF. DRG. NO. 3-016919/26
 OF Fz. B429 AUTHORITY
 P.O. 4/NO. 7830/PAT/AVD.
 DT. 11.6.1987)

- IT IS PERMITTED TO IMPREGNATE WITH GREASE 11BK, GOST 19537-74.
- NET SHAPED KNURL AS PER GOST 21474-75 IS PERMITTED. KNURL ALL OVER CYLINDRICAL SURFACE IS ALLOWED.
- THREADED (NO-GO) GAUGE NOT TO SCREW INTO COMPONENT MORE THAN 3 1/2 TURNS.
- PERMITTED MATERIAL:-
 TAPE 2.1 AS PER GOST 2284-79
 35 GOST 1050-74
 SHEET 2 GOST 19904-74
 GOST 16523-70
 SHEET 2 GOST 19903-74
 GOST 16523-70
 ANY GRADE OF TAPE O.M-2.1 GOST 503-71
- DIMENSION A = 11.7 + 0.15 OVER $\phi 12$ (CALCULATED) INSTEAD OF DIMENSION 13C5 PERMITTED. STEEL TAPE 10K/OM-2.1 AS PER GOST 503-71.
- COATING - CHEMICAL PHOSPHATING, CHROMIUM/VARNISH MA-592.

APPROVED BY:- B. PETRASHKOV:-
 (LEADER OF USSR TEAM) 2.05.86



APPVD	WM/BA	REV	DATE	DESCRIPTION	SIGN
		A	26/5/87	IND. MATL. Added. Matl Specification changed as per Det I (No). 34086-A dt. 13.3.87	
				AMENDMENTS	

DIMENSIONS ARE IN m.m		
THIRD ANGLE PROJECTION		
SCALE: 1:1		
1986	NAME	DATE
DRAWN	Auten	2-5-86
TRACED		
CHECKED		
F/D.O		
DGM(TS)		

MATL.	AS ABOVE
NOMENCLATURE	
CAP	
MIC	
SCHEDULE NO.	
STORE	F.B.F-29E

ORDNANCE FACTORY	
AMBAJHARI	
DRG. NO.	FS-1160 A
SHEET NO. 1	
NO. OF SHEETS. 1	
OPERATION NO.	
COMPT.	CAP, Detail No. 4 4-024069-3 B21