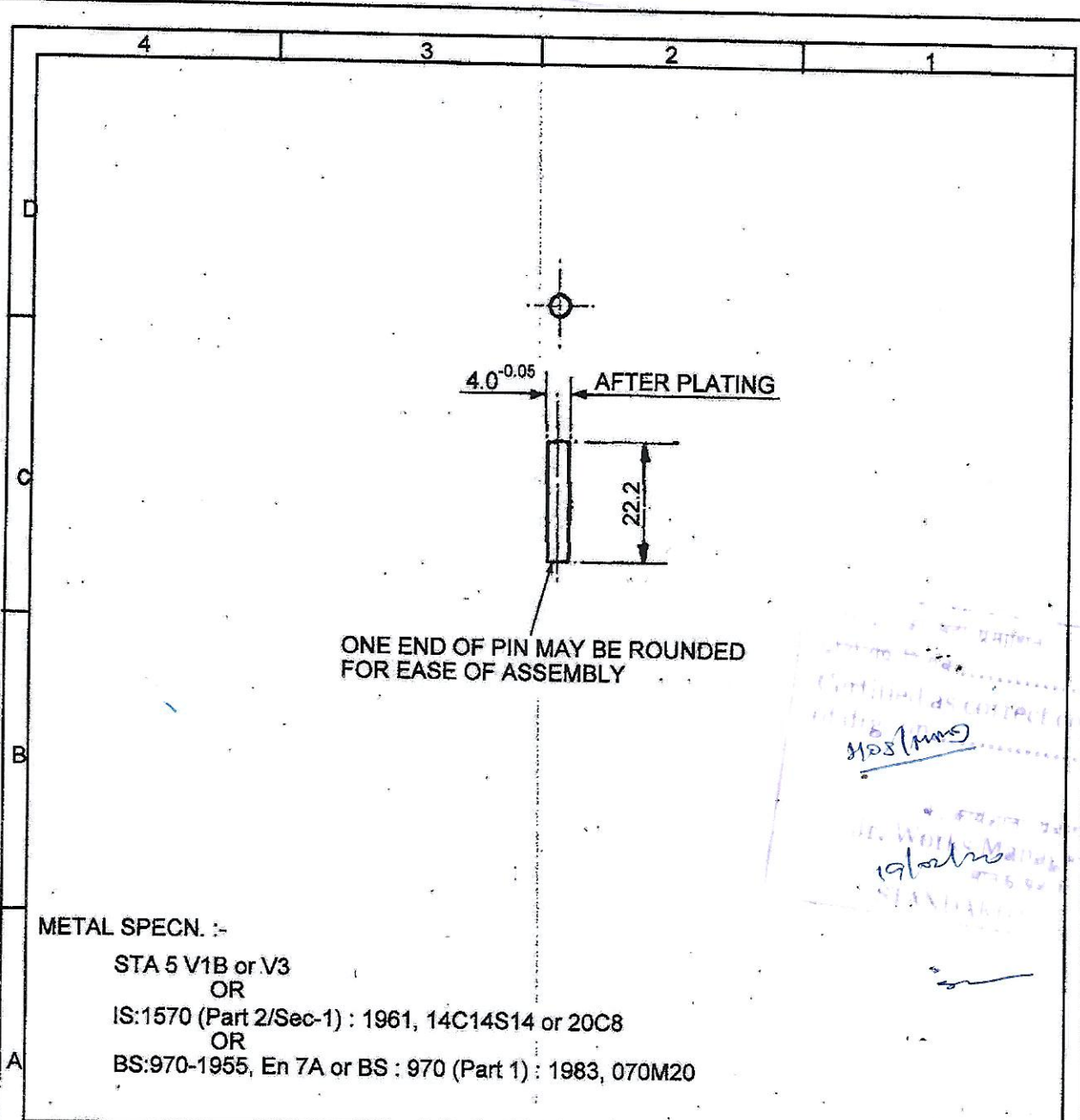


RESTRICTED



ONE END OF PIN MAY BE ROUNDED FOR EASE OF ASSEMBLY

METAL SPECN. :-

STA 5 V1B or V3
 OR
 IS:1570 (Part 2/Sec-1) : 1961, 14C14S14 or 20C8
 OR
 BS:970-1955, En 7A or BS : 970 (Part 1) : 1983, 070M20

Handwritten notes:
 1208 (mm)
 19/02/1983

TRIM ON THIS LINE WHEN SUPPLIED TO TRADE

03-09-13		APPROVED		DGNAI	
R.No	DATE	ZONE	BRIEF RECORD	AUTHORITY	INITIALS
SCALE:- NTS		TOL.	DIMENSIONS ARE IN mm		ASSY DRG No:- NAD 7606
DGN	DRN	TCD	COMP	CHD	ASSY DRG LIST.
PASSED	APPD.	GEN SPEC :- NA SPEC A-31B		DTE GEN OF NAVAL	
MATL:-STEEL		STORE SPEC :-		ARMAMENT INSPECTION	
MATL SPEC:- SEE Drg.		STORE REF No.		IHQ,MOD (NAVY) N. DELHI	
PROTECTIVE FINISH:- PASSIVATED		GAUGE SCH No.			
ZINC PLATED TO IS : 1573		D.S. CAT No.			
<h1 style="text-align: center;">PIN, HINGE</h1>				DRG No.	
				<h2 style="text-align: center;">NAD 7606/3</h2>	

A-4

USED ON: STRIKER MECHANISM, NS MK1

BASED ON:- NOD 8026/3 Dt. 23.11.55