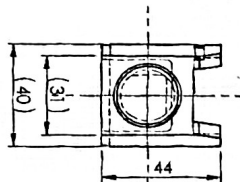
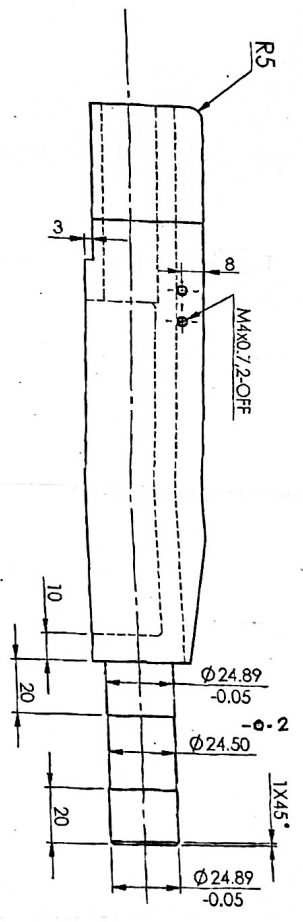
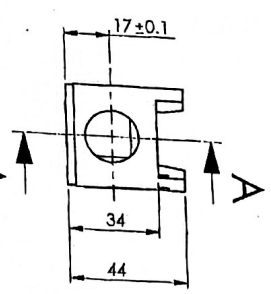
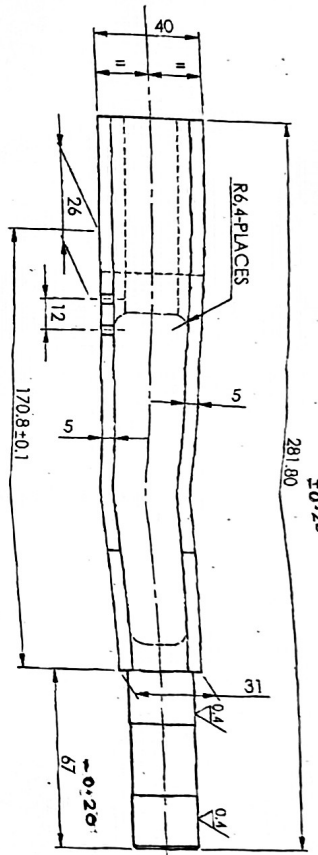


UNCONTROLLED COPY
 CERTIFIED CORRECT COPY OF APPROVED
 DRAWING AT THE DATE OF APPROVAL
 A - 15/05/21 / 06/21
 DESIGN & DRAWING OFFICE
 ORDNANCE FACTORY, TIRUCHIRAPPALLI-620 016.

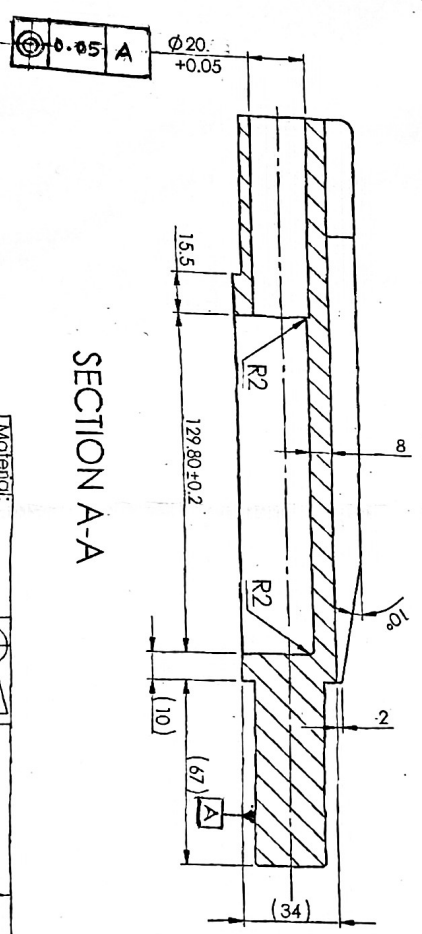


MANUFACTURER GET THE APPROVAL OF
 SAMPLE SUPPLIED BEFORE BULK
 PRODUCTION

MATERIAL : AL 7075 WITH T6 COND.

DIMENSIONS GIVEN ARE SUITABLE FOR FURTHER
 MACHINING AND HARD ANODIC COATING

SECTION A-A



Signature
 HOS/PS2
Signature
 Tpm (S)

Material: AS SUPPLIED	3rd Angle	DWG Details	SUB: LAUNCHER 95% FINISHED BEFORE HA COATING	Do not scale Drawing
Alt. Material:	DRAWN	SIGN: <i>Signature</i>	FOR: LAUNCHER	All Dimensions are in mm
Hardness:	CHECKED	DATE: 5/2/21	PROJ: 38mm MSL	Wt. 203.91 gm
Finish:	HOS/D&DO	<i>Signature</i>	Design Ref 33P 1103	SHEET: 1 OF 1
Untolerated dimensions IS:2102 Medium	DO/Prod		DWG. No.: TEND - 2658-	
	DO/QC		ORDNANCE FACTORY	
	DO/DDO		TIRUCHIRAPPALLI-16.	
	APPROVED ON: 05/02/2021			

8 7 6 5 4 3 2 1