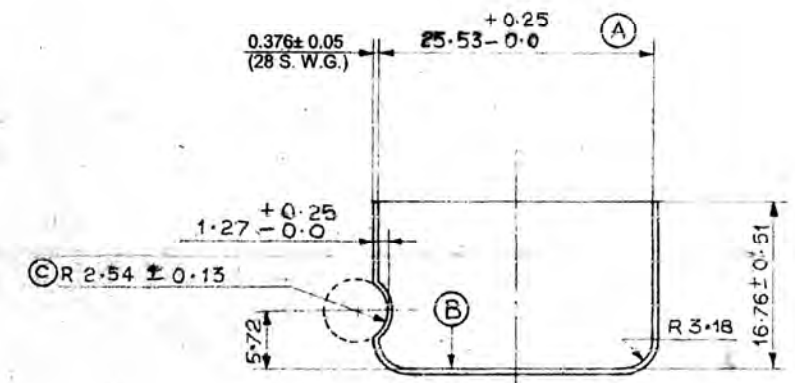


QX 438
AN 1074

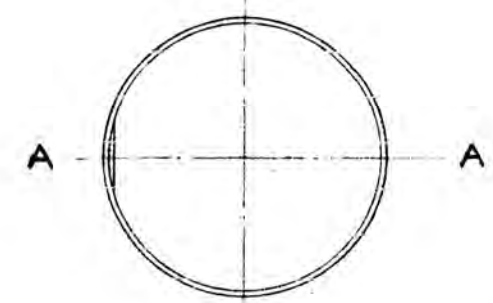
DIMENSIONS ARE IN mm

TOL. ON UNTOL. DIMENSIONS.
FOR ONE DECIMAL PLACE ± 1.3
FOR TWO OR MORE DECIMAL PLACES ± 0.13

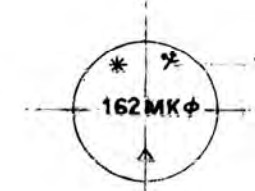
D.C.I. 22472-A



SECTION A-A



INVERTED PLAN



ACTUAL SIZE

IN RELATION TO THE SMALLEST FEATURE (A) THE SURFACE FEATURE (B) MUST BE SQUARE.
IN RELATION TO THE SMALLEST FEATURE (A) AND SURFACE FEATURE (B) THE SMALLEST FEATURE (C) SHOULD BE WITHIN 0.13 OF ITS CORRECT GEOMETRIC POSITION.

NOTE :-

TO BE PASSIVATED IN ACCORDANCE WITH SPEC. L 10205 AMENDED TO DATE.

THE FOLLOWING MARKINGS TO BE EMBOSSED IN 3.2 mm TYPE ON CROWN OF CAP IN THE POSITION INDICATED:-
NO AND MARK FUZE.

- * CONTRACTOR'S INITIALS OR RECOGNISED TRADE MARK.
- Δ LOT NO (EXCEPT NUMERALS WHICH SHOULD BE STENCILLED IN 6 mm TYPE IN RED WITH READY MIXED PAINT, MARKING, FOR PACKAGES & PETROL CONTAINERS TO SPEC. IS:138 OR WITH PAINT READY MIXED, MARKING WITH RUBBER STAMPS, SEMIGLOSSY TO SPEC IS: 139 SHADE NO 537 OF IS-3 OF LATEST ISSUE
- ∅ MK AS APPLICABLE.
- † DATE OF MANUFACTURE (YEAR ONLY) IN 3 mm TYPE IN RED WITH READY MIXED PAINT, MARKING, FOR PACKAGES & PETROL CONTAINERS TO SPEC. IS: 138 OR WITH PAINT READY MIXED, MARKING WITH RUBBER STAMPS SEMIGLOSSY TO SPEC. IS:139 SHADE NO 537 OF IS-3 OF LATEST ISSUE.

MATERIAL:-

BRASS TO SPEC. JSS 9535-2

R.Nº	DATE	AUTHORITY	REVISION	ZONE	AHSP	D.O.	SIG.	DRN.	CHD.	TRD RCD	COMP:-	ASSY. DFG	IQX 35 GE	IQX 41 GE
3-12-2012	DC 37526-A	ALT. MATERIAL DELETED.								SCALE:- 2:1				
22-12-05		SCANNED WITHOUT CHANGE.								EST. MASS:-				
		PREVIOUS DCs Nos.:- 22472-A, 22989-A, 24002-A, 25487-A, 25492-A, 26858-A, 27175-A, 27393-A, 29774-A, 29959-A, 30649-A, 30973-A, 31371-A, 31482-A, 31827-A, 33285-A, 34225-A & 35434-A								GAUGE SCHED:-				
										DATE:-				
										MATERIAL:- AS ABOVE.				
										PROTECTIVE FINISH:-				
DRG. SEALED:- 24-4-52														
CAP														
													DESIGNER'S REF	
													D3(L) 3055/E/374	
													PART NO	
													Q. X. 438	
													D.S.CAT NO	
													AHSP:- COA(A) KIRKEE	

8/3