



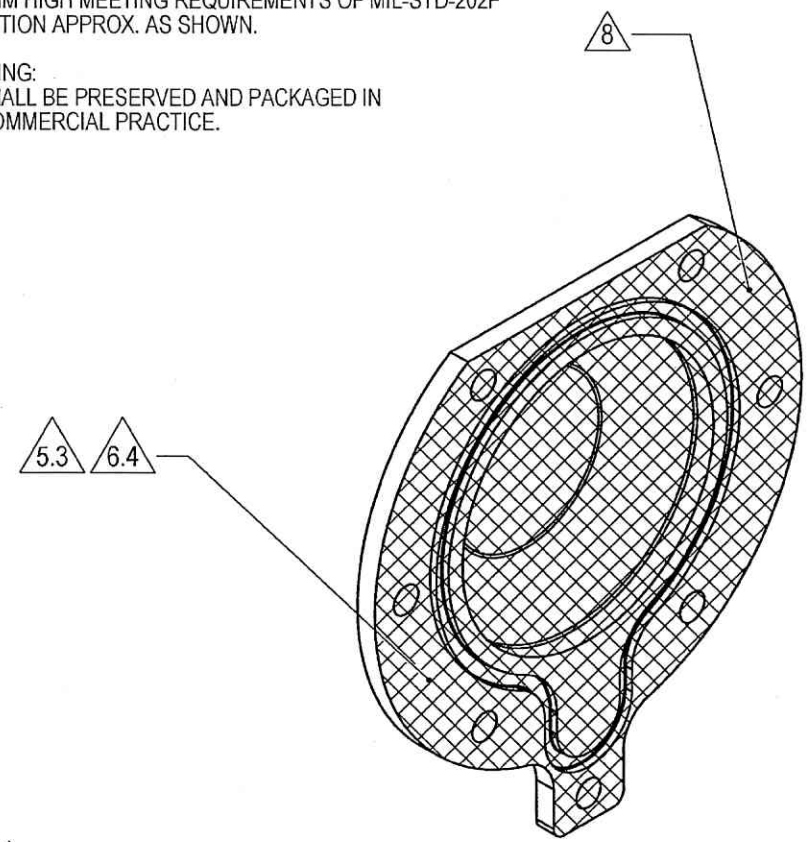
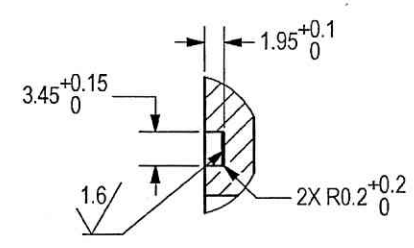
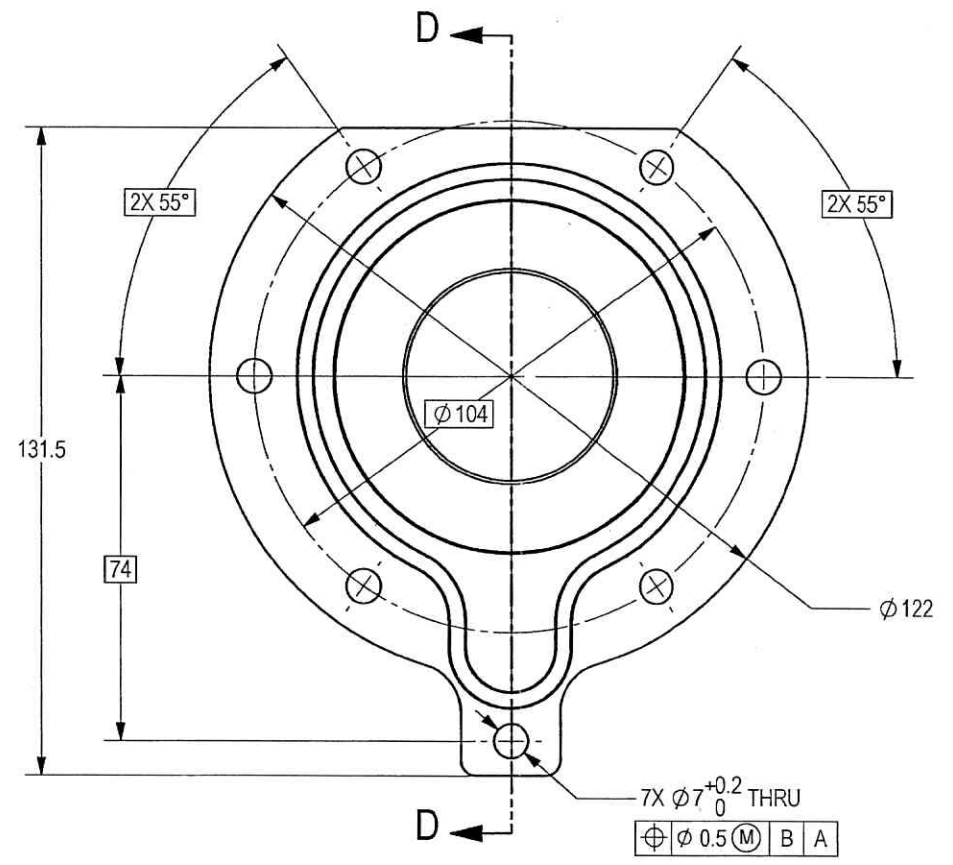
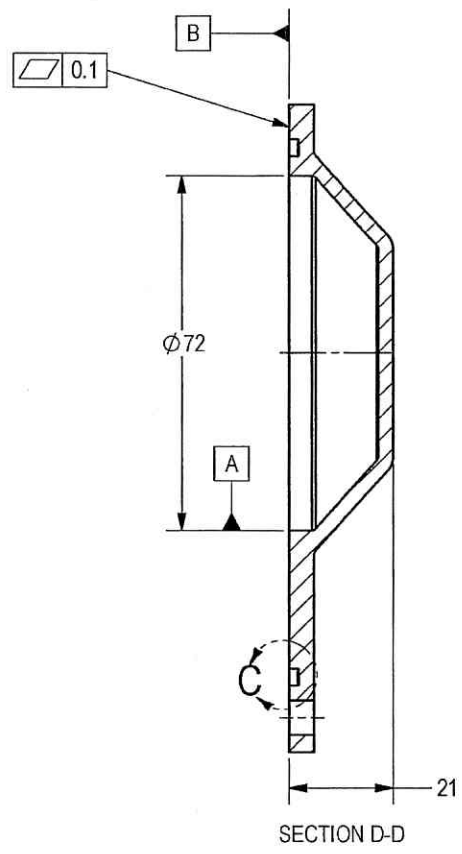
THIS DOCUMENT AND THE INFORMATION CONTAINED IN IT ARE PROPRIETARY AND CONFIDENTIAL TO OFT. NO PERSON OR ENTITY IS ALLOWED TO COPY, REPRINT, REPRODUCE OR PUBLISH ANY PART OF THIS DOCUMENT, NOR DISCLOSE ITS CONTENTS TO OTHERS, NOR MAKE ANY USE OF IT, NOR ALLOW OR ASSIST OTHERS TO MAKE ANY USE OF IT UNLESS BY THE PRIOR WRITTEN EXPRESS AUTHORIZATION OF OFT AND THEN ONLY TO THE EXTENT AUTHORIZED. COPYRIGHT-OFT.

SHEET REV STATUS
ALL SHEETS ARE THE SAME REVISION

REVISION RECORD				
REV	ECO	DESCRIPTION	DATE	APVD
-		Released	10-Oct-18	L. Goldstein

NOTES :

- INTERPRET THIS DRAWING IAW ASME Y14.100M.
- MATERIAL: ALUMINUM ALLOY PLATE 6061-T651 PER QQ-A-250/11. (EQUIVALENT ALUMINUM IS PERMITTED AFTER ELBIT APPROVAL).
- GENERAL TOLERANCES ACCORDING TO ISO 2768-m.
- DEBURR AND REMOVE SHARP EDGES APPROX. 0.3X45°.
- FINISH:
 - CHROMATIC CONVERSION COATING PER MIL-DTL-5541F, TYPE I, CLASS 3.
 - ANODIC COATING PER MIL-A-8625 TYPE II 15 TO 25 MICRON THICK CLASS 1.
- THE MARKED AREA , AND SPECIFIED THREADS AND HOLES SHALL BE PROTECTED AGAINST ANODIC COATING.
- PAINT:
 - PRIMER: LEAD AND CHROMATE FREE EPOXY PRIMER PER MIL-DTL-53022 THICKNESS: 25-40 MICRONS. OR EQUIVALENT APPROVED BY ELBIT.
 - INTERMEDIATE: APPLY TWO LAYERS OF HIGH SOLID EPOXY POLYAMIDE PER MIL-PRF-22750 TYPE II CLASS H. EACH LAYER 30-50 MICRONS.
 - TOP COAT: APPLY TWO LAYERS OF ALIPHATIC POLYURETHANE PER MIL-PRF-85285 OR MIL-C-83286 RAL 9016 MATT. EACH LAYER 30-50 MICRONS.
- AREAS MARKED BY , AND SPECIFIED THREADS AND HOLES MUST BE PROTECTED FROM PAINT.
- QUALITY ASSURANCE PROVISIONS:
 - QUALITY ASSURANCE PROVISIONS FOR THIS ITEM PER RDMQD00012P.
- IDENTIFY PER MIL-STD-130 BY STAMPING OR BY LABELLING. CHARACTERS 1.25 MM HIGH MEETING REQUIREMENTS OF MIL-STD-202F METHOD 215J. LOCATION APPROX. AS SHOWN.
- PACKAGING AND PACKING: THE FINISHED PART SHALL BE PRESERVED AND PACKAGED IN ACCORDANCE WITH COMMERCIAL PRACTICE.



UN CONTROLLED COPY
CERTIFIED CORRECT COPY
OF APPROVED DRAWING
BY THIS DATE 30-11-2020

Design & Drawing Office
Ordnance Factory,
Tiruchirappalli-620012

PROJECT OFFICER

UNLESS OTHERWISE SPECIFIED		SIGNATURE	DATE
DIMENSIONS ARE IN MM PER ASME Y14.5M - 1994		DRAWN	11/19/20
TOLERANCES		CHECKED	
LINEAR	ANGULAR	HOS/DDO	3/4/20
SEE NOTE 3.	SEE NOTE 3.	OFFICER/PRODN	
1st ANGLE PROJECTION		OFFICER/QC	
SURFACE TEXTURE IN Micro M		OFFICER/DDO	

ORDNANCE FACTORY TIRUCHIRAPPALLI			
TITLE		FOR: ELEVATION ASSY	
COVER BLIND BEARING		OF: 12.7MM SRCG	
SIZE	CAGE CODE	DWG NO	
C	2291A	Y25638A-00	
SCALE	AUTOMATED DRAWING (SW)		SHEET 1 OF 1
1:1			

(WEIGHT APPROX.: 0.137 Kg.)

DWG NO
Y25638A-00
SH
1