

2

DWG NO Y28657A-00 SH 1

1

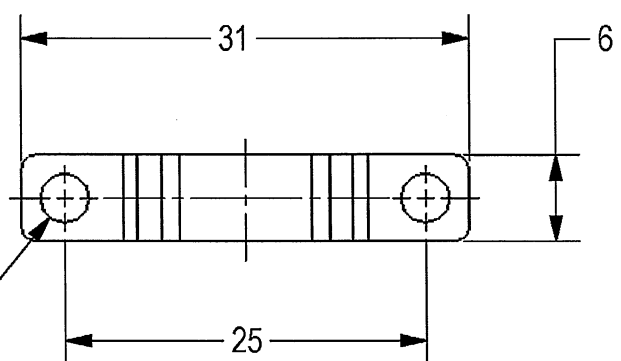
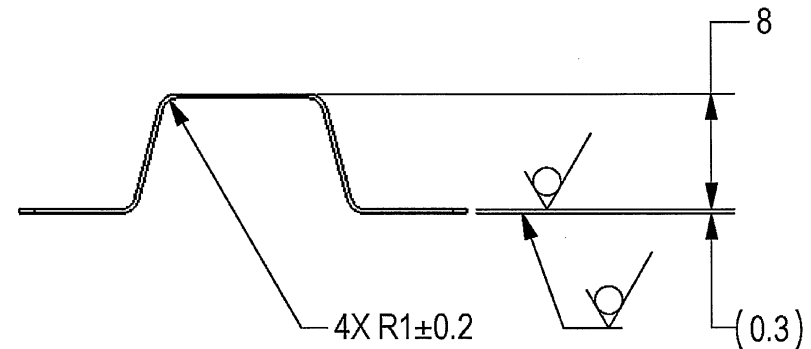
THIS DOCUMENT AND THE INFORMATION CONTAINED IN IT ARE PROPRIETARY AND CONFIDENTIAL TO OFT. NO PERSON OR ENTITY IS ALLOWED TO COPY, REPRINT, REPRODUCE OR PUBLISH ANY PART OF THIS DOCUMENT, NOR DISCLOSE ITS CONTENTS TO OTHERS, NOR MAKE ANY USE OF IT, NOR ALLOW OR ASSIST OTHERS TO MAKE ANY USE OF IT UNLESS BY THE PRIOR WRITTEN EXPRESS AUTHORIZATION OF OFT AND THEN ONLY TO THE EXTENT AUTHORIZED. COPYRIGHT-OFT.

SHEET REV RECORD
ALL SHEETS ARE THE SAME REVISION

REVISION RECORD				
REV	ECO	DESCRIPTION	DATE	APVD
--		Released	12-Feb-19	L. Goldshtein

NOTES:

1. INTERPRET THIS DRAWING IAW ASME Y14.100M. UNLESS OTHERWISE SPECIFIED DIMENSIONS ARE IN MM PER ASME Y14.5
2. MATERIAL: CRES PLATE THICK 0.3 MM AISI 302/304 1/4 OR 1/2 HARD PER ASTM-A-666.
3. UNLESS OTHERWISE SPECIFIED, UNDEFINED MACHINED FILLET RADII SHALL BE 0.2...0.3 MM.
4. DEBURR AND REMOVE SHARP EDGES, APPROX. 0.2X45 Deg.
5. PARENTHEICAL FIGURES ARE FOR REFERENCE ONLY.
6. FINISH: A DRY FILM LUBRICATION IN A FLUOROPOLYMER ORGANIC RESIN CLASS 2 COLOR MATTE BLACK TYPE I; 15-25 MICRON THICK PER VS-1-3-1-165 (OR EQUIVALENT).
7. QUALITY ASSURANCE PROVISIONS ANSI/ASQC Z1.4 ALL DIMENSIONS AND FINISH PER SQUEGLIA C=0 AQL 2.5% KEY DIMENSIONS 100% INSPECTION (MARKED BY FLAG KEY) VISUAL INSPECTION 100%.
8. PACKAGING AND PACKING: THE FINISHED PART SHALL BE PRESERVED AND PACKAGED IN ACCORDANCE WITH MANUFACTURER'S BEST COMMERCIA PRACTICE.
9. IDENTIFY PER MIL-STD-130 PARA 4.1.B, BY LABELING ITS CONTAINER WITH THE PART NUMBER. CHARACTERS MINIMUM TEXT HEIGHT 1.25 MM.



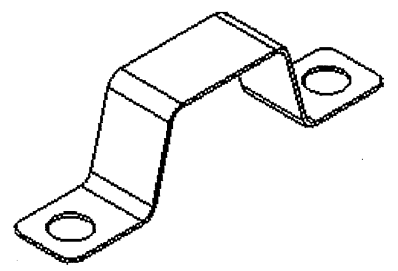
SEE ATTACHED MEDIA

B

B

A

A



3.2/√(19)

UNLESS OTHERWISE SPECIFIED		SIGNATURE	DATE	ORDNANCE FACTORY TIRUCHIRAPPALLI	
PROFILE: N/A	DRAWN	<i>[Signature]</i>	11/9/20		
TOLERANCES LINEAR ANGULAR		CHECKED		SPRING FLAT	
ISO-2768-c	ISO-2768-c	HOS/DDO	<i>[Signature]</i>	SIZE	OF: 12.7MM SRCG
1st. ANGLE PROJECTION		OFFICER/PRODN		CAGE CODE	DWG NO
		OFFICER/QC		B	2291A
PROJECT OFFICER	<i>[Signature]</i>	OFFICER/DDO	<i>[Signature]</i>	Y28657A-00	--
Approximate Weight:	0.6 [g]	SURFACE TEXTURE IN Micro Meter		SCALE 2:1	AUTOMATED DRAWING (SW)

PLM Control

1

2