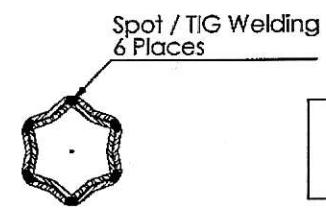
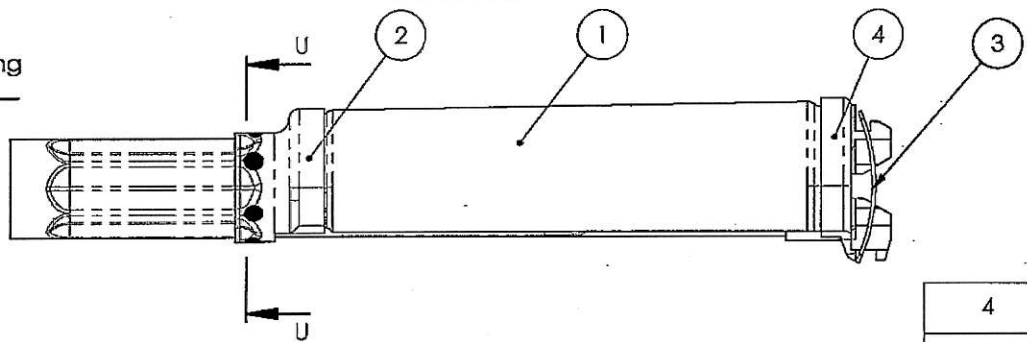


SECTION X-X



SECTION U-U

Spot / TIG Welding  
6 Places



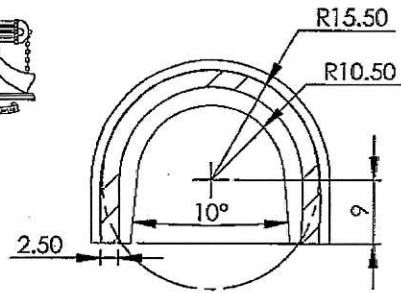
ITEM NO.	PART NUMBER	QTY.
4	k-2056 Gas Tube Assy ✓	1
3	K-2055 Leaf Spring Cylinder ✓	1
2	K-2054 Front Cup ✓	1
1	K-2052 Upper Hand Guard ✓	1

CERTIFIED CORRECT COPY  
OF APPROVED DRAWINGS  
AT THIS DATE 19.11.18

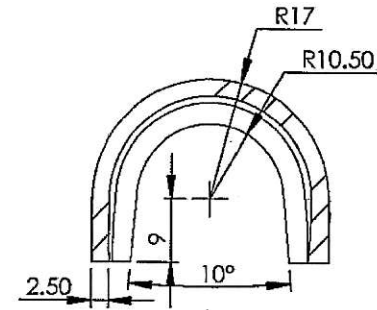
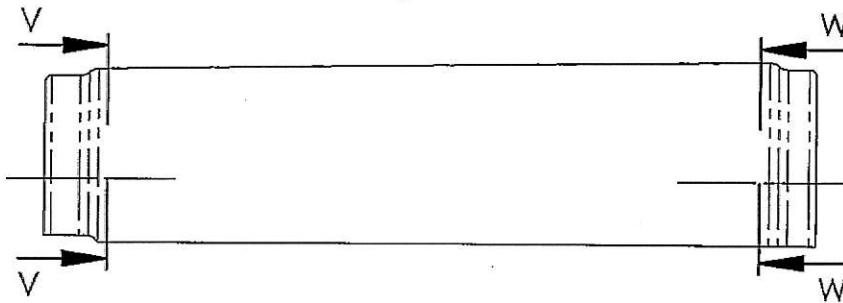
UN CONTROLLED COPY

TRACED DRAWN CHECKED OIC/D&DO OFFICER/ PRODN. DIV. OFFICER/ D&DO	SIGNATURE & DATE	SUB: <b>Upper Hand Guard Assy</b> FOR: General Assy OF: TRICHY ASSAULT RIFLE	SCALE NTS
			QPC 1
		DES. REF. NO. K-2050 ✓	Weight(g)
		DRG. No.: TAR-K-2050 ✓	SHEETS: 1
AMENDMENTS	SIG. & DATE	ORDNANCE FACTORY TIRUCHIRAPPALLI-16.	SHEET No.: 1
APPROVED ON 10/08/2018			

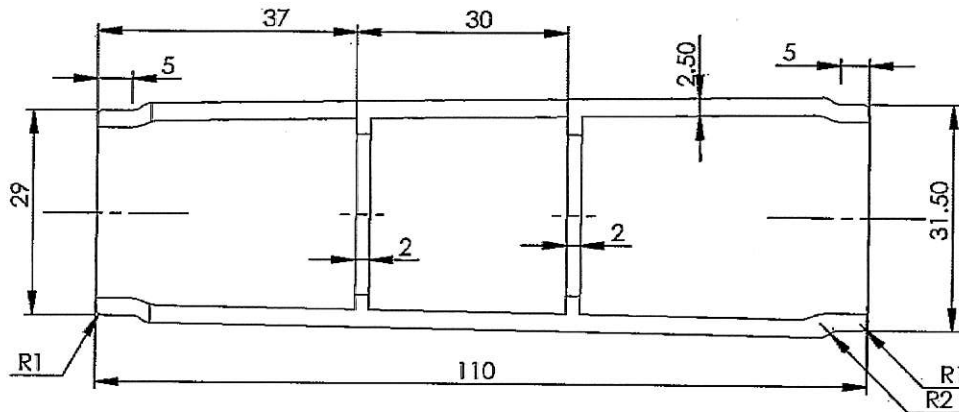




SECTION V-V



SECTION W-W



UN CONTROLLED COPY

CERTIFIED CORRECT COPY  
OF APPROVED DRAWINGS  
AT THIS DATE

*29/9/18*

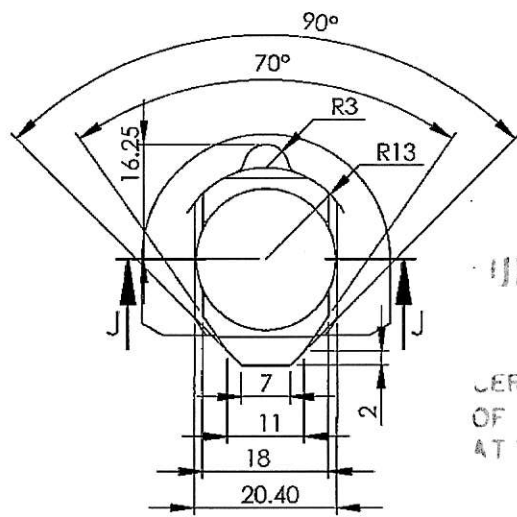
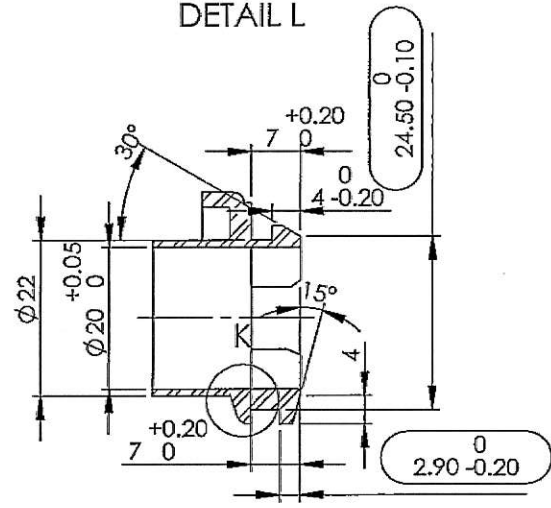
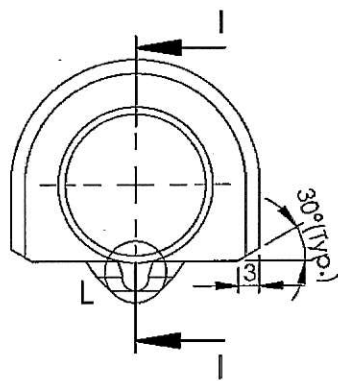
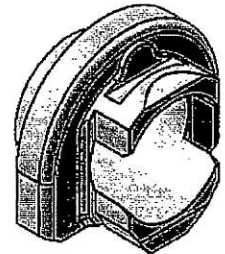
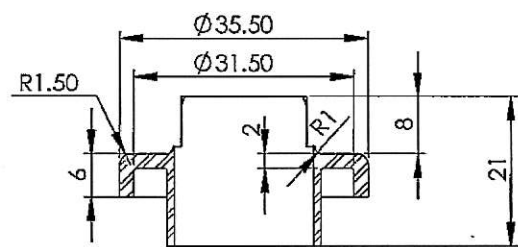
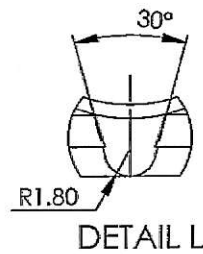
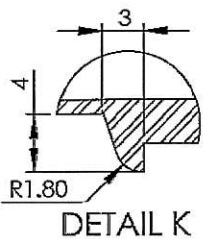
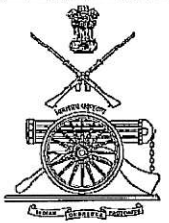
Design & Drawing Office  
Ordnance Factory  
Tiruchirappalli

**Material:**  
Glass Fibre Reinforced Polyamide  
Nylon-6 (or) 66  
Melting Point Not less than 200 Deg.C

**Finish:**  
Black Matt Finish

Untolerated Dimens. as per IS:2102 (MED)

			SIGNATURE & DATE.	SUB: <b>Upper Hand Guard</b> FOR: Upper Hand Guard Assy OF: TRICHY ASSAULT RIFLE DES.REF.NO. K-2052 DRG. No.: <b>TAR-K-2052</b>	SCALE NTS
		TRACED			QPG 1
		DRAWN			Weight (g)
		CHECKED			
		OIC/D&DO	<i>P. Taylor</i>		
	SIG. & DATE			ORDNANCE FACTORY TIRUCHIRAPPALLI-16.	SHEETS: 1
AMENDMENTS		DIV.OFFICER/ D&DO	<i>Seh</i>		SHEET No.: 1
			APPROVED ON. 10/08/2018		



UN CONTROLLED COPY

CERTIFIED CORRECT COPY  
OF APPROVED DRAWINGS  
AT THIS OFFICE  
19718

Design of [Signature] Office  
Ordnance Factory  
Tiruchirappalli 620016

**Material :- Steel**  
BS:970 pt.1 1983 Gr.070 M55 (En-9)  
BS:970 pt.1 1983 Gr.080 M40 (En-8)

Hardened & Tempered to : 290-350HV

**for Casting**  
BS:3146 PART-1, 1974 Class:5, Grade:A  
Non Stressed Component

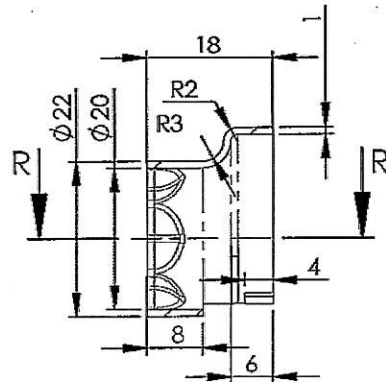
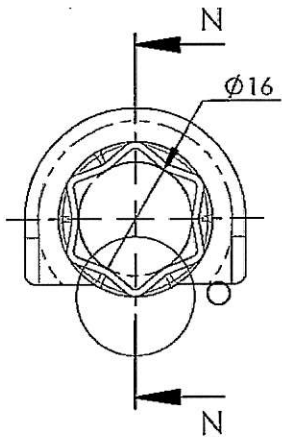
Radiographic Test as per ASTM-E-192  
**Acceptance Standard:-**  
Gas hole & Foreign Material: Level-3  
Shrinkage (All Types) : Level 3

**Protective Finish :**  
Phosphating to Specn.  
0465-01-1994 Class II Oil Finish

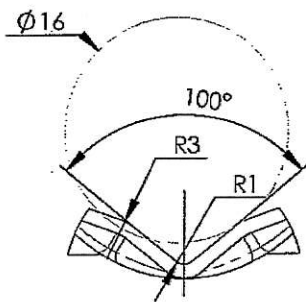
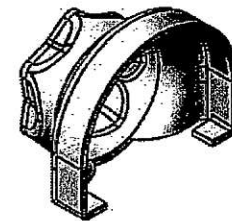
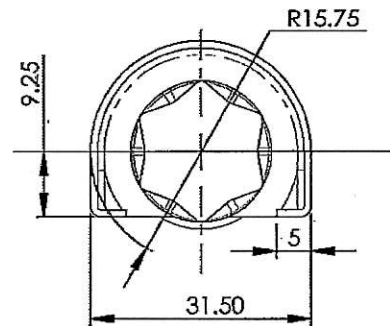
Blunt Sharp Edges to 0.4 R  
Untolerated Dimensions as per IS:2102 MED

SECTION H-H

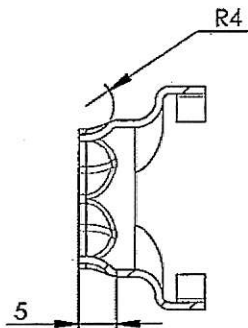
TRACED DRAWN CHECKED OIC/D&DO OFFICER/ PRODN. DIV.OFFICER/ D&DO APPROVED ON. 10/08/2018	SIGNATURE & DATE.	SUB: <b>REAR CUP</b>	SCALE NTS
		FOR: Upper Hand Guard Assy	QPG 1
		OF: TRICHY ASSAULT RIFLE	Weight (g)
		DES.REF.NO. K-2053	SHEETS: 1
		DRG. No.: TAR-K-2053	SHEET No.: 1
AMENDMENTS	SIG. & DATE	ORDNANCE FACTORY TIRUCHIRAPPALLI-16.	



SECTION N-N



DETAIL O



SECTION R-R

Material : Steel Sheet 1.0 mm

- BS:1449 Pt.1 1983 Gr. CS40 Sec-4
- (or) BS:1449 Pt.1 1983 Gr. CS50 Sec-4
- (or) BS:1449 Pt.1 1983 Gr. CS60 Sec-4
- (or) BS:1449 Pt.1 1983 Gr. CS70 Sec-4
- (or) BS:1449 Pt.1 1983 Gr. CS80 Sec-4

Hardened and Tempered to : 290-350 HV

Protective Finish :  
Accelerated Phospating to Specn.  
0465-01-1994 Class II Oil Finish

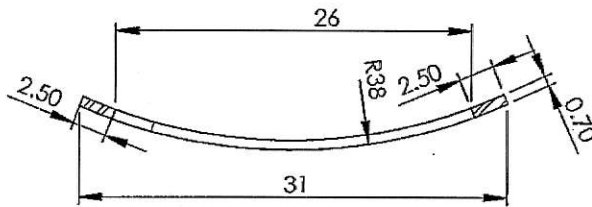
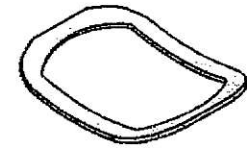
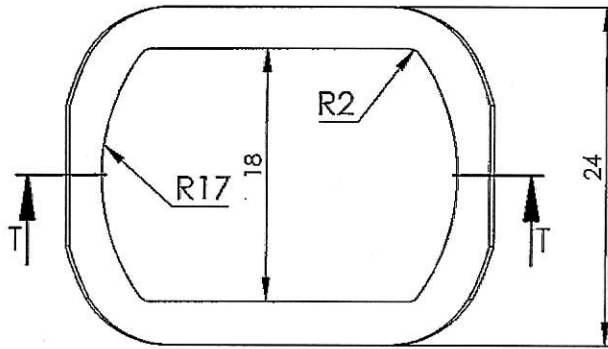
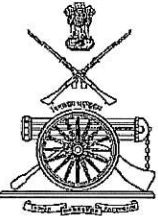
Blunt Sharp Edges to 0.4 R

UN CONTROLLED COPY

CERTIFIED CORRECT COPY  
OF APPROVED DRAWINGS  
AT THIS DATE 19.5.18

Design & Drawing Office  
Ordnance Factory,  
Tiruchirappalli 620016

			SIGNATURE & DATE.	SUB: <b>Front Cup</b> FOR: Upper Hand Guard Assy OF: TRICHY ASSAULT RIFLE DES. REF. NO. K-2054 DRG. No.: TAR-K-2054	SCALE NTS
		TRACED			QPG 1
		DRAWN			Weight (g)
		CHECKED			SHEETS: 1
		OIC/D&DO	<i>P. Jahn</i>		SHEET No.: 1
OFFICER/ PRODN.					
DIV. OFFICER/ D&DO	<i>C. Kumar</i>				
AMENDMENTS	SIG. & DATE	APPROVED ON. 10/08/2018.		ORDNANCE FACTORY TIRUCHIRAPPALLI-16.	



SECTION T-T

Material : Steel Sheet 0.7mm

BS:970 Pt.1 1983 Sec.3 Gr.070 A78  
 Alt. Matl.  
 BS:970 Pt.1 1983 Sec.3 Gr.070 A72  
 EN42(or) EN42J

Hardened and Tempered to : 475-550 HV

Protective Finish :  
 Accelerated Phospating to Specn.  
 0465-01-1994 Class II Oil Finish

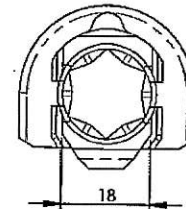
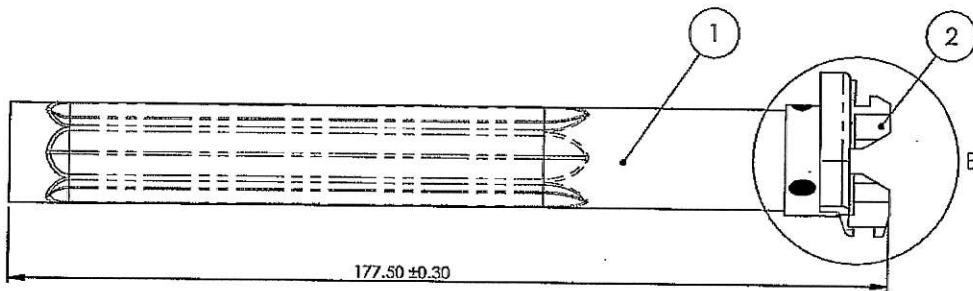
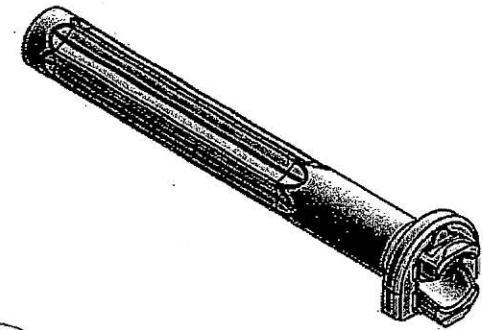
Blunt Sharp Edges to 0.4 R

UN CONTROLLED COPY

CERTIFIED CORRECT COPY  
 OF APPROVED DRAWINGS  
 AT THIS DATE 19/11/18

Design & Drawing Office  
 Ordnance Factory  
 Tiruchirappalli 620016

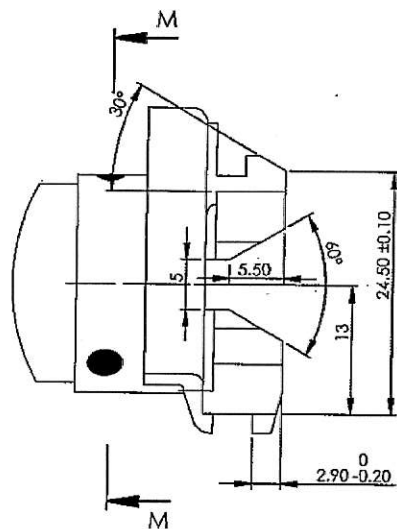
			SIGNATURE & DATE.	SUB: <b>Leaf Spring Cylinder</b>	SCALE NTS
		TRACED			
		DRAWN		OF: TRICHY ASSAULT RIFLE	QPG 1
		CHECKED		DES. REF. NO. K-2055	Weight (g)
		OIC/D&DO	<i>P. Forth</i>	DRG. No.: K-2055	
AMENDMENTS	SIG. & DATE	DIV. OFFICER/D&DO	<i>Geeta</i>	ORDNANCE FACTORY TIRUCHIRAPPALLI-16.	SHEETS: 1
		APPROVED ON. 17/09/2018			SHEET No.: 1



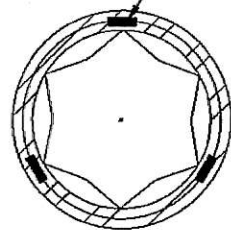
UN CONTROLLED COPY

CERTIFIED CORRECT COPY  
OF APPROVED DRAWINGS  
AT THIS DATE 19/9/18

Design or Drawing Office  
Ordnance Factory  
Tiruchirappalli 620016



Spot Welding  
3 Places



SECTION M-M

DETAIL B

ITEM NO.	PART NUMBER	QTY.
2	K-2053 Rear Cup ✓	1
1	K-2051 Gas Cylinder ✓	1

TRACED DRAWN CHECKED OIC/D&DO OFFICER/ PRODN. DIV.OFFICER/ D&DO	SIGNATURE & DATE	SUB: <b>Gas Tube Assy</b> FOR: <b>Upper Hand Guard Assy</b> OF: <b>TRICHY ASSAULT RIFLE</b> DES. REF. NO. <b>K-2050</b> ✓ DRG. No.: <b>TAR-K-2056</b> ✓	SCALE NTS
	P. Taylor		OPG 1
	Weight(g)		
	SHEETS: 1.		
	SHEET No.: 1		
AMENDMENTS & DATE	SIG. & DATE	APPROVED ON 27/08/2018	ORDNANCE FACTORY TIRUCHIRAPPALLI-16.