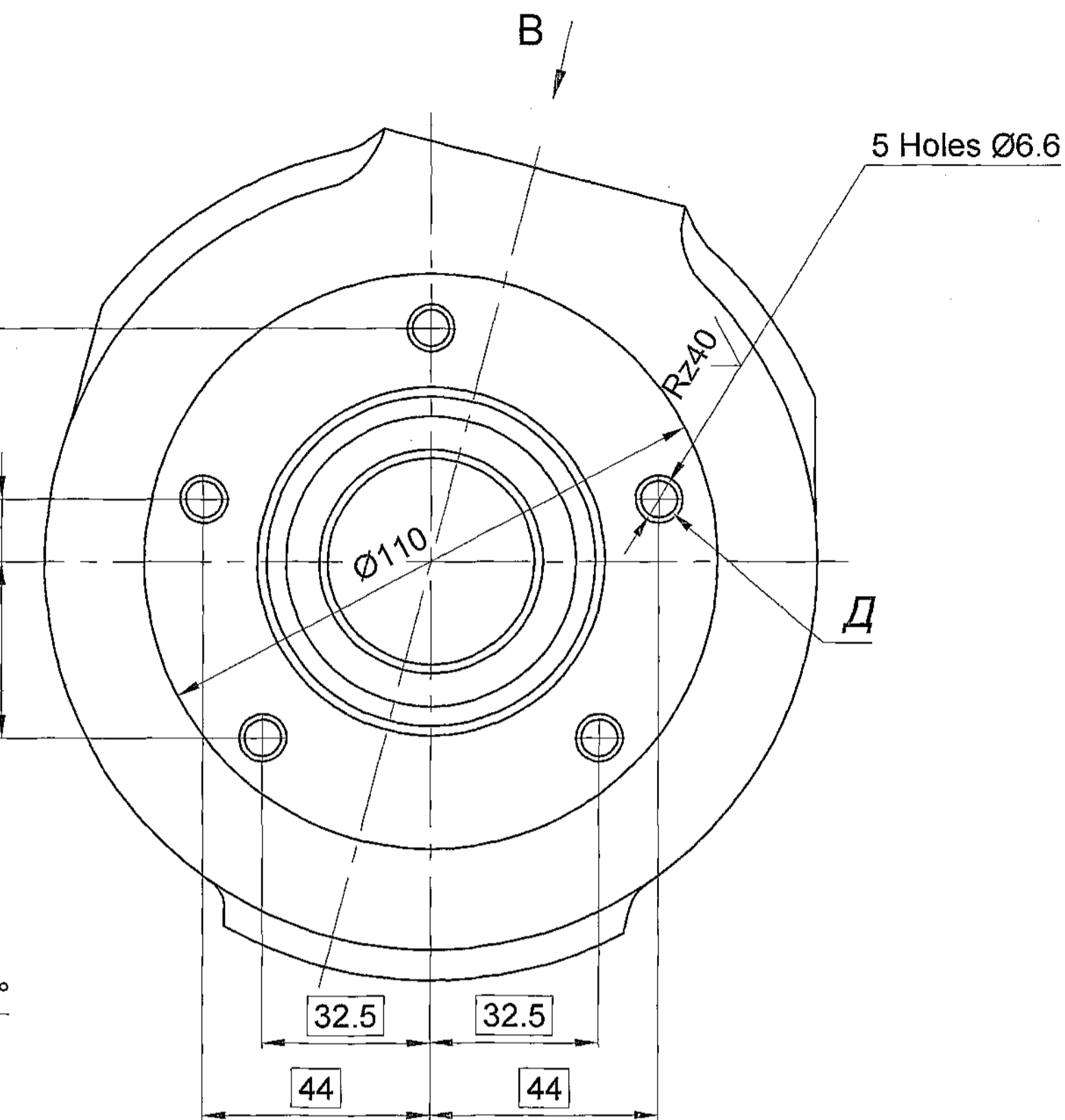
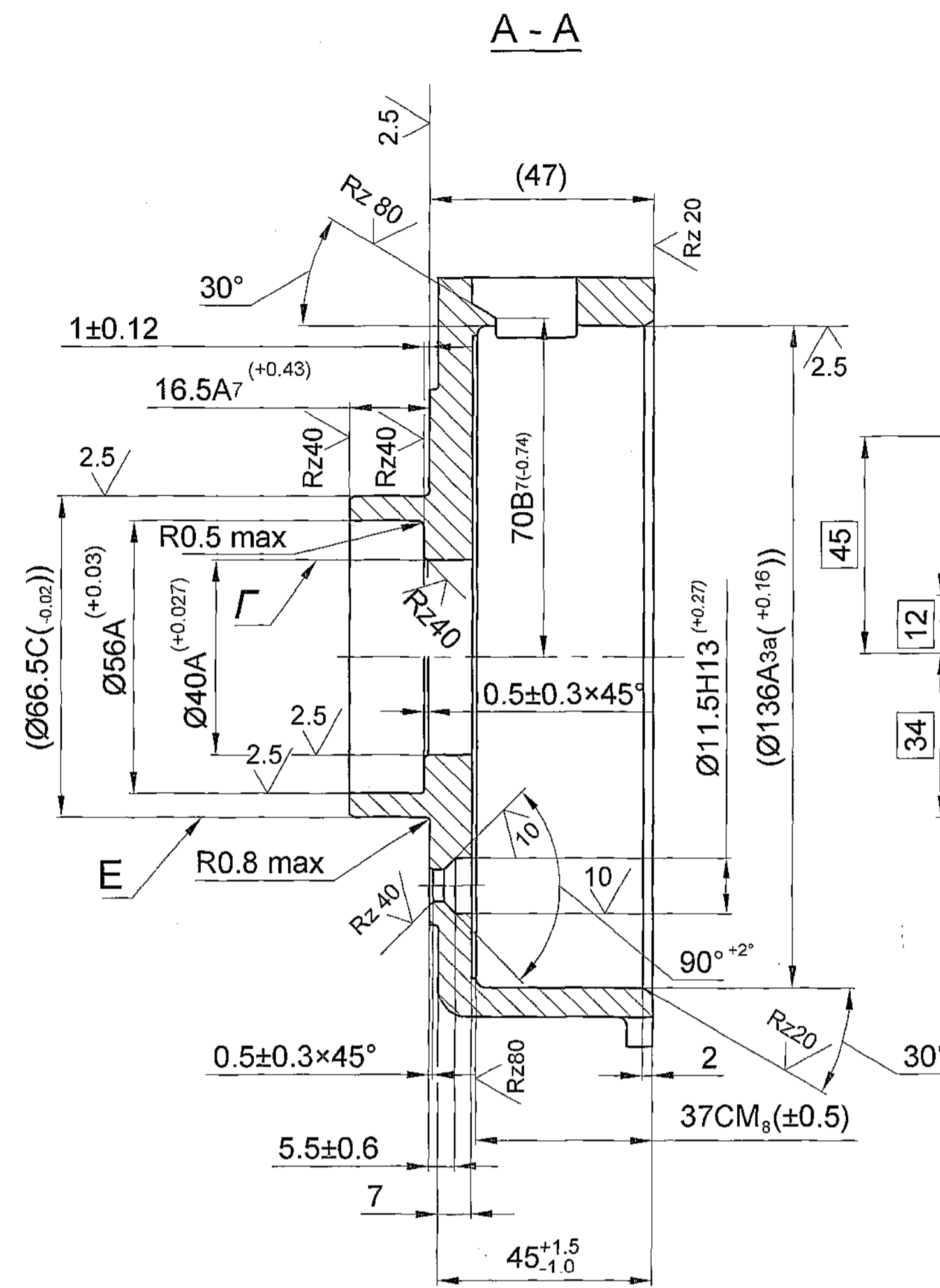
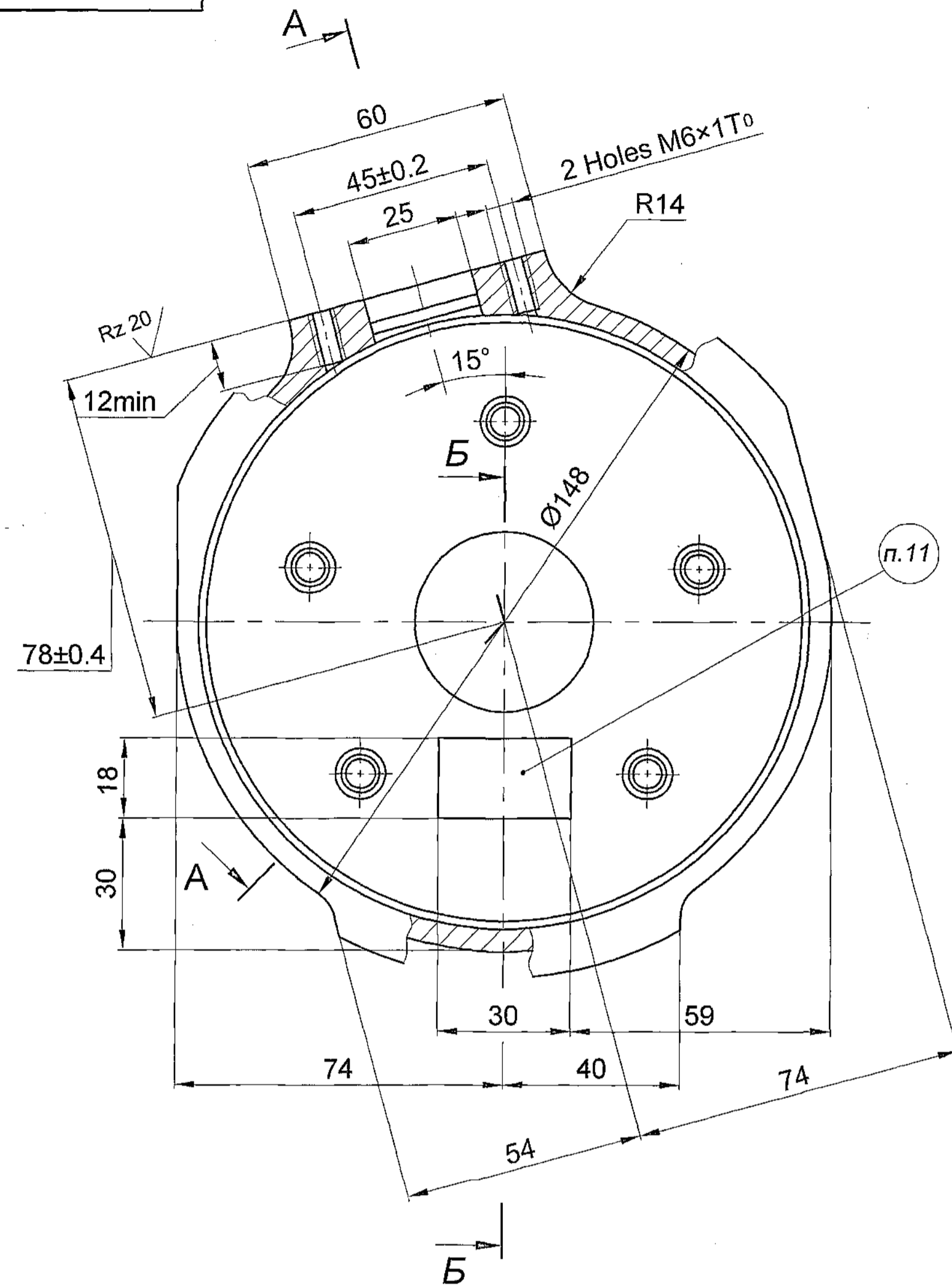
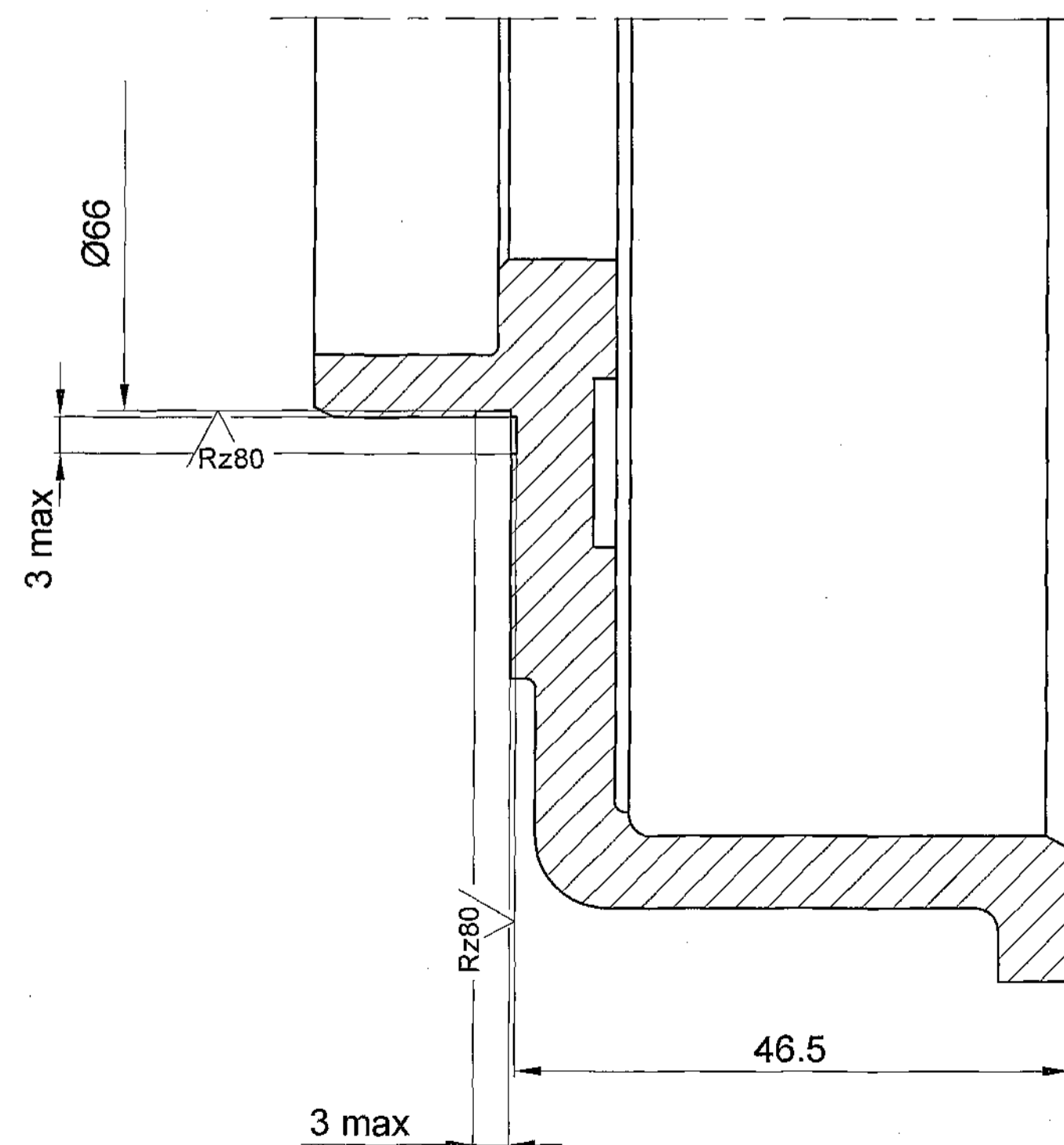


DRAWING NUMBER
3327-35-7-01

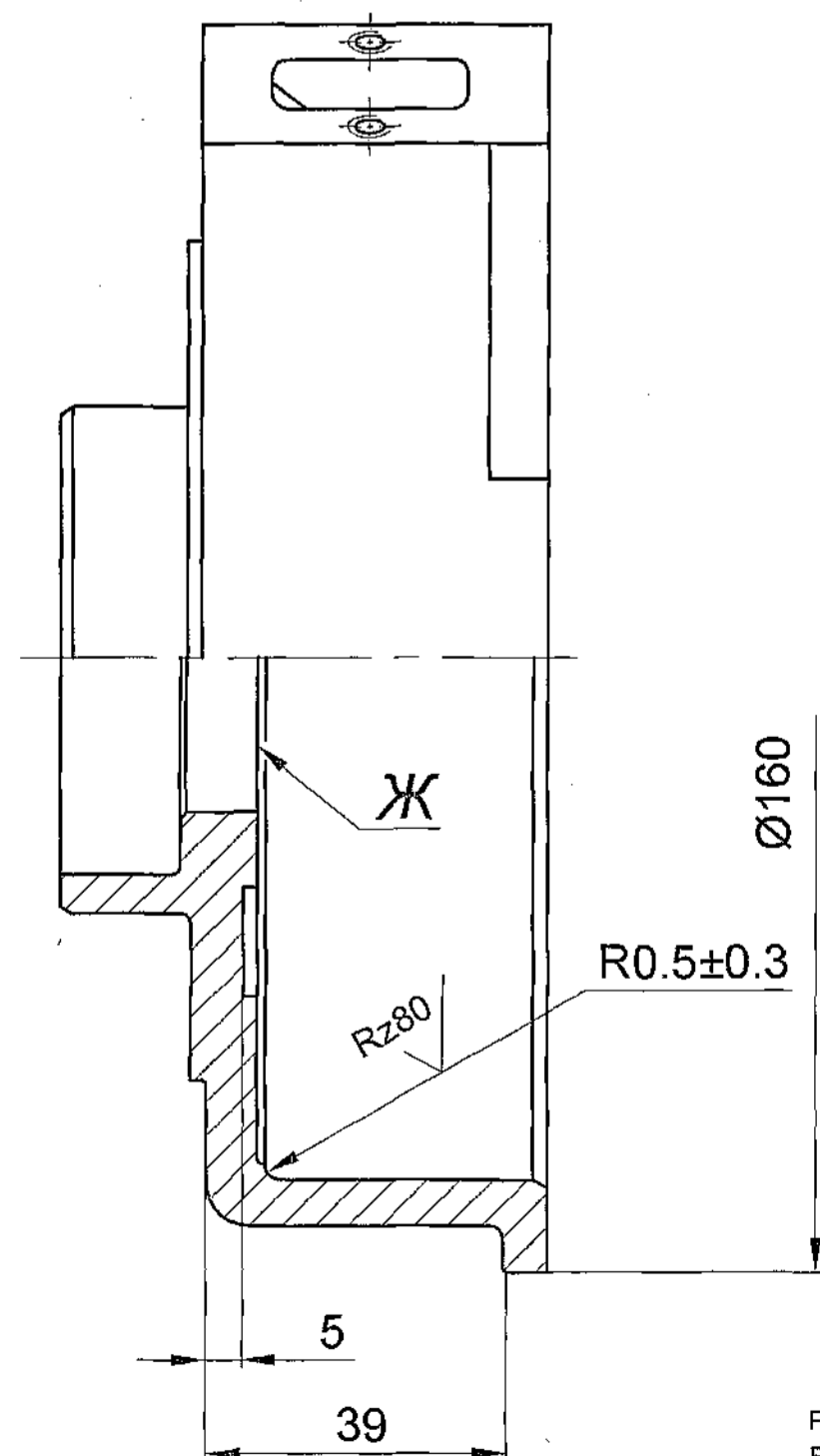


1. Casting requirements are as per instruction TTM 65-78.
2. Unspecified casting radii should be max R 5mm.
3. Casting dimensions are executed with accuracy of +1.5 mm, -1.0 mm.
4. Casting draft should be maximum 2° above the tolerance limits.
5. Machining dimensions without deviations are made as per 7th class of accuracy ost 1010.
6. Technical requirements for thread are as per standard 82021-00.
7. Dimensions given in brackets are after assembly.
8. Radial runout of surface Γ to be referred in assembly.
9. Shift of holes Δ from nominal location with respect to surface E should be maximum 0.1mm (tolerance dependable).
10. Technological mesh in the form of crosscutting lines with a height of upto 0.5mm is allowed on surface \mathcal{X} .
11. To be Marked of material as per Gost 2171-79 with casting, with font П10-10 Gost 2930-62. It is Allowed to mark by punching method.

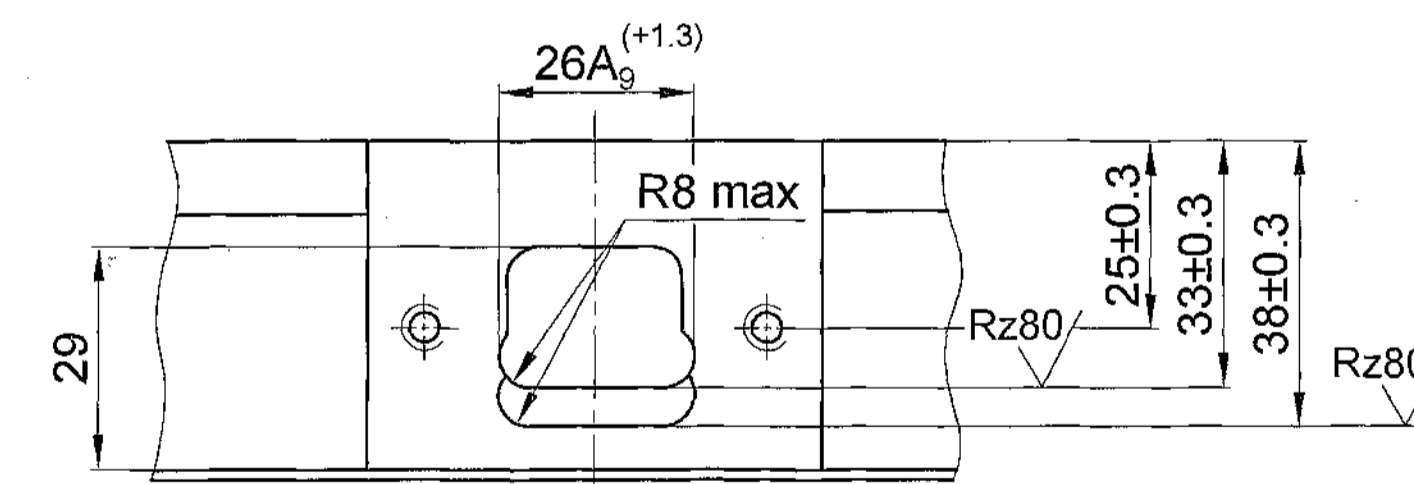
Б - Б Alternative
M 2:1



Б - Б



VIEW B (Rotated)



PILOT SAMPLE SHOULD BE APPROVED BY A H S P BEFORE BULK PRODUCTION.

EST. WT. 0.79 TO BE STAMPED OR MARKED WHERE INDICATED THIS # (LETTERS)

ALL SHARP EDGES AND CORNERS TO BE REMOVED UNLESS OTHERWISE STATED MACHINED CORNERS TO HAVE R OUTSIDE R INSIDE EQUIVALENT CHAMFERS ARE PERMISSIBLE.

DRN	CHD	TCB	APPD	DATE	SCALE	DIMENSIONS IN mm	TOLERANCE ON DIMS UNLESS OTHERWISE STATED IS: 2102-69	ALL THREADS TO CONFORM TO	DRN	MATERIAL: AK7ч(АЛ9) GOST 1583-89.	USED ON: Cb 3327-02-8-01
				13.7.07	1:1					CONTROLLERATE OF QUALITY ASSURANCE (HEAVY VEHICLES) AVADI	
										TITLE: AXLE - BOX	
										D S CAT NUMBER	DRAWING NUMBER 3327-35-7-01
ISSUE	DATE	NATURE OF AMENDMENTS									

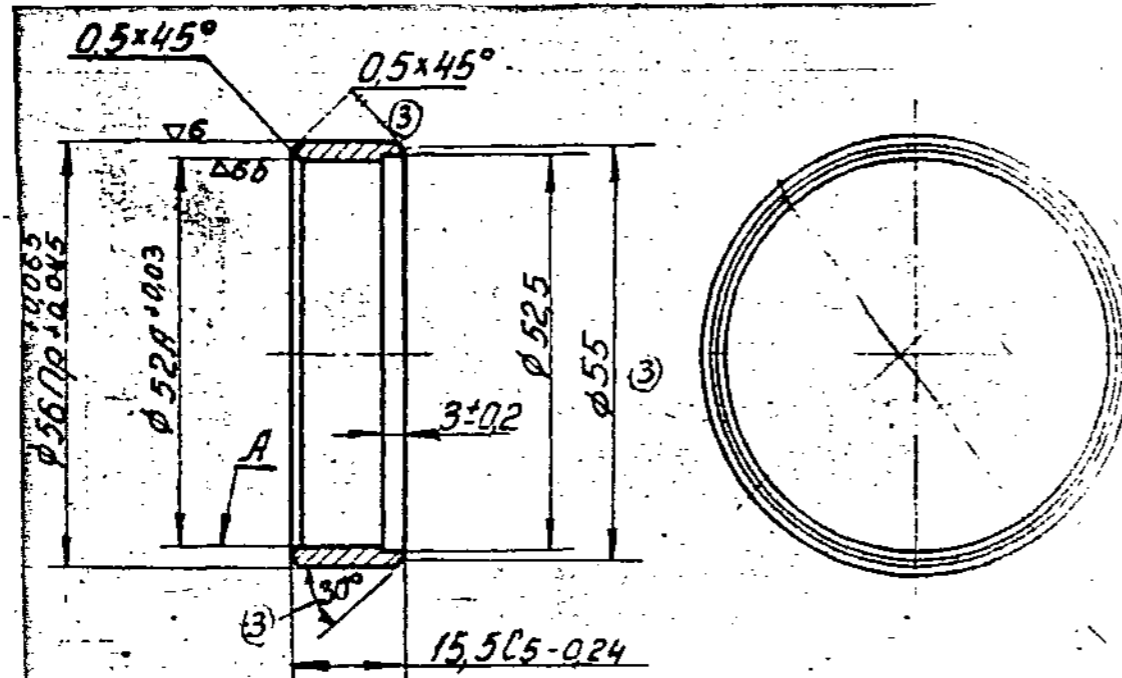
DRAWING INDIANISED BASED ON RUSSIAN ORIGINAL ISSUE - 10

F-5
48
283
SIZE A1

DRAWING NUMBER

327-99-2

▽ 4 UNLESS OTHERWISE SPECIFIED



1. DELETED.
2. DIMENSIONS WITH UNSPECIFIED TOLERANCES MAINTAINED AS PER ACCURACY CLASS 7 OST 1010.
3. SURFACE 'A' SHOULD BE FINALLY MACHINED ON ASSEMBLED COMPONENT.
4. SHARP EDGES SHOULD BE BLUNTED.
5. THE COMPONENT MAY BE MANUFACTURED FROM STEEL 35 GOST 1050-74.
6. GROVE WITH DIMENSIONS ϕ 52.5 AND 3 ± 0.2 MAY NOT BE DONE.
7. ALTERNATE MATERIAL: STEEL, GRADES 15,20,35, AND 45, GOST 1050-74.

EXPLANATORY NOTE :

8. MATERIAL QUOTED : STEEL 10 GOST 1050-74.

CHEMICAL COMPOSITION : %

GRADE OF STEEL	CONTENT OF			ELEMENTS %					
	C	Si	Mn	Cr	P	S	Cu	Ni	
	M A X I M U M								
10	0.07-0.14	0.17-0.37	0.35-0.65	0.15	0.035	0.040	0.25	0.25	

MECHANICAL PROPERTIES :

GRADE OF STEEL	TENSILE STRENGTH Kgf/mm ² (min)	YIELD POINT Kgf/mm ² (min)	ELONGATION % (min)	REDUCTION IN AREA % (min)	IMPACT STRENGTH Kgf/cm ² (min)
10	34	21	31	55	-

Ⓒ EQUIVALENT MATERIAL
040A04 (EN 2A) BS:970

PILOT SAMPLE SHOULD BE APPROVED BY A H S P BEFORE BULK PRODUCTION

EST. WT. (A) TO BE STAMPED OR MARKED WHERE INDICATED THIS # (LETTERS)
~~0.035 kg~~
 0.05 kg

ALL SHARP EDGES AND CORNERS TO BE REMOVED UNLESS OTHERWISE STATED MACHINED CORNERS TO HAVE R - OUT SIDE INSIDE EQUIVALENT CHAMFERS ARE PERMISSIBLE

			DRN	<i>[Signature]</i>	MATERIAL:-	USED ON
			CHKD	<i>[Signature]</i>	STEEL 10 GOST 1050-74	CB 3327-02-8
			TCD	<i>[Signature]</i>		CB 315-601-9
			APPD	<i>[Signature]</i>	CONTROLLERATE OF QUALITY ASSURANCE(HEAVY VEHICLES)	
			DATE	8-5-86	AVADI	
			SCALE:-	1:1		TITLE
			DIMENSIONS IN mm			BUSH (B)
			TOLERANCE ON DIMNS		D S CAT NUMBER	DRAWING NUMBER
			UNLESS OTHERWISE STATED IS:2102-69			
			ALL THREADS TO CONFORM TO			327-99-2
			ISSUE DATE	NATURE OF AMENDMENTS		

KVD No: 78472

A
8
SIZE A3