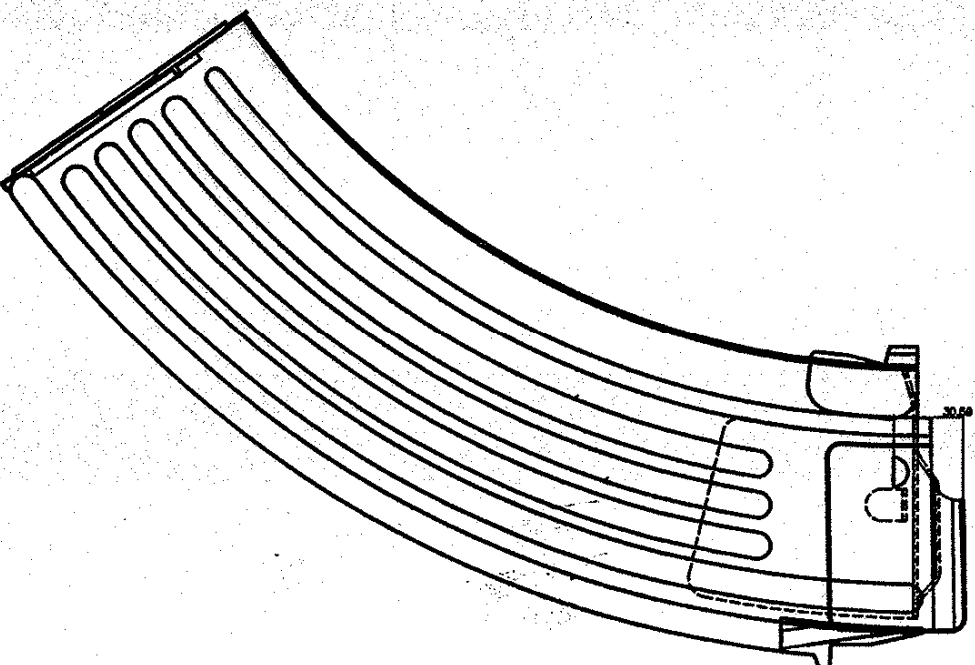


0007-K. ON. DRG

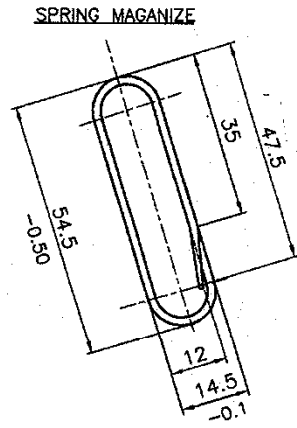
DIMENSIONS ARE IN mm.
 UNTOLERATED DIMNS. AS PER IS : 2102 (MED)
 MARK DRAWING No.



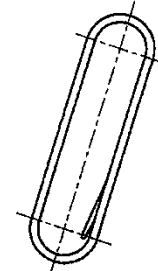
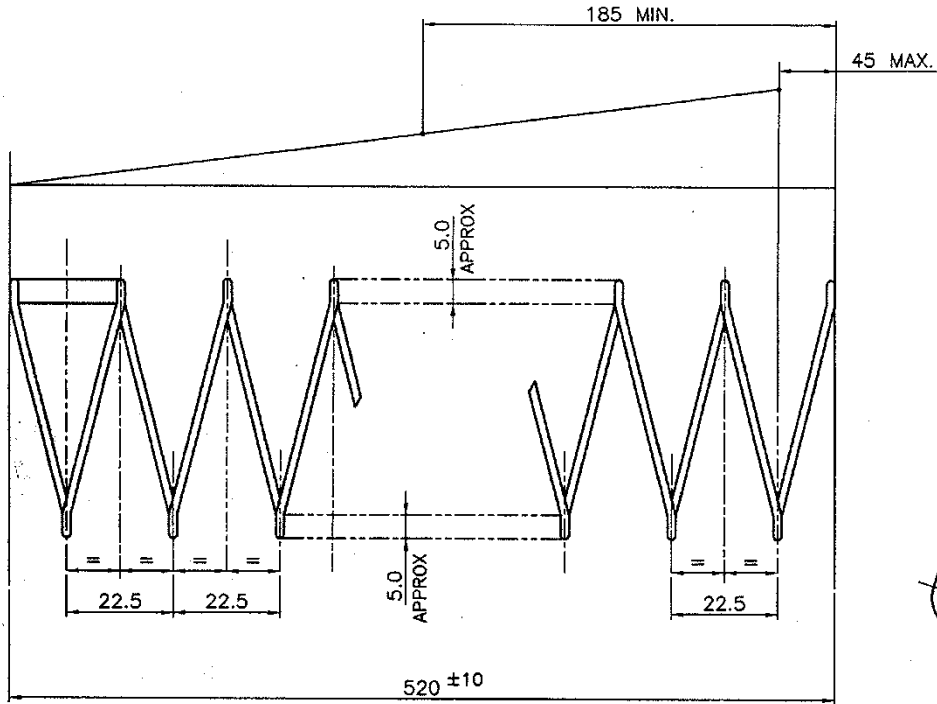
E <i>E. Krishna</i> DGM (NODAL OFFICER FOR TAR)		1 MAGAZINE ASSY.		AS ABOVE		SCALE ---	
PART NO.		DESCRIPTIONS		NO OFF		REMARKS	
		SIGNATURE & DATE		MATERIAL		TREATMENT	
DRAWN				TRICHY ASSAULT RIFLE		STORE DRG. NO. K-7000	
CHECKED		HOS/D&DO		DES. REF. NO.		OPERATION NO. ---	
OFFICER/ PRODN.		OFFICER/ D&DO		DRG. No.: TAR-RB-K-7000		SHEETS: 1	
APPROVED ON.				ORDNANCE FACTORY TRUCHIRAPPALLI-16.		SHEET No.: 1	
AMENDMENTS		SIG. & DATE		1		4	

DRG. NO. K-7002

A
B
C
D
E
F



VIEW OF END COIL



MATL:- IS: 4454 Pt. 1 GR.4. (HRD&TEMP)
 TOTAL NO. OF COIL-23
 LEFT HAND OF RIGHT HAND WOUND
 WIDE DIA 1.5
 PHOSPHATE TO SPECN WPN/GEN 3 CLASS I
 OIL FINISH

DIMENSIONS ARE IN mm.
 UNTOLERATED DIMNS. AS PER IS : 2102 (MED)
 MARK DRAWING No.

S. K. a
 DGM
 (NODAL OFFICER
 FOR TAR)

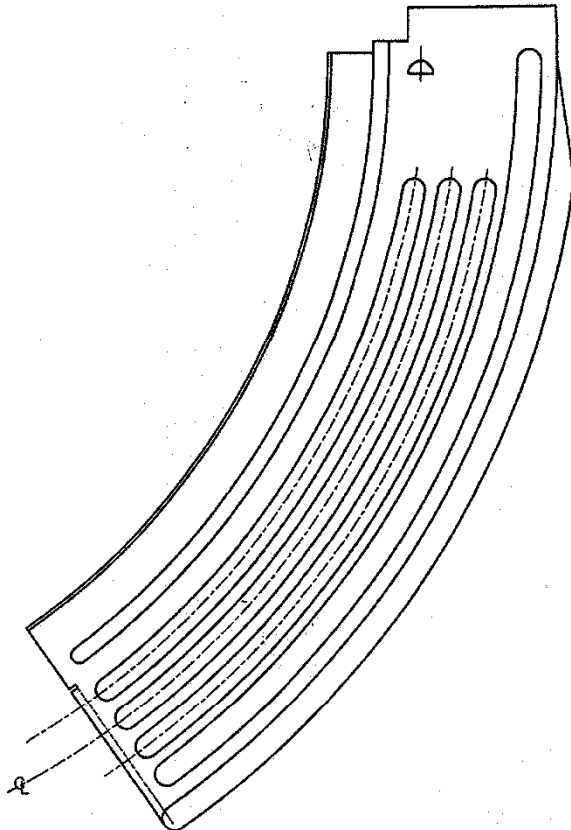
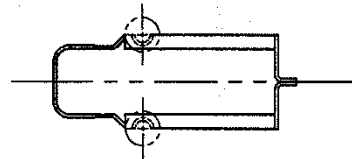
AMENDMENTS	SIG. & DATE
------------	-------------

PART NO.		DESCRIPTIONS	NO OFF	MATERIAL	TREATMENT	REMARKS
TRACED		SIGNATURE & DATE	SUB: SPRING PLATFORM		SCALE	
DRAWN		FOR: MAGAZINE (STEEL)	OF: TRICHY ASSAULT RIFLE		STORE DRG. NO.	
CHECKED			DES. REF. NO.		K-7002	
HOS/D&DO		DRG. No.: TAR-RB-K-7002		OPERATION NO.		
OFFICER/PRODN.		ORDNANCE FACTORY TIRUCHIRAPPALLI-16.		-		
OFFICER/D&DO		APPROVED ON.		SHEETS: 01		
APPROVED ON.		FT		SHEET No.: 01		

A
B
C
D
E
F

DRG. NO. K-7010

DIMENSIONS ARE IN mm.
 UNTOLERATED DIMNS. AS PER IS : 2102 (MED)
 MARK DRAWING No.

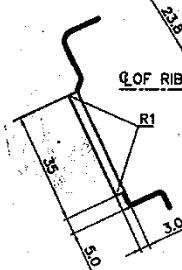
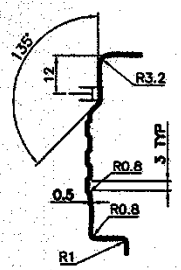
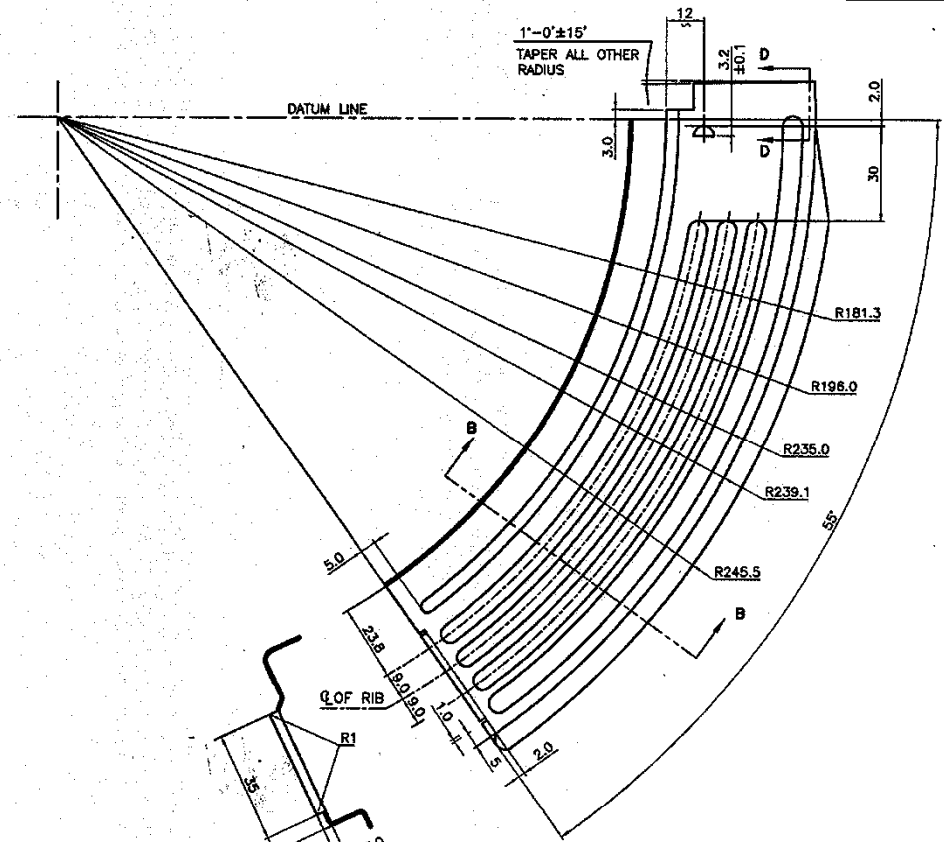
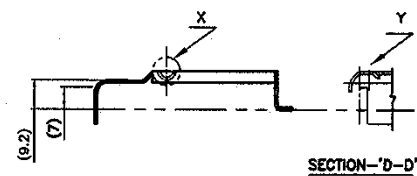


RH PLATE AND LH PLATE TO BE SPOT WELD.

S. K. Ma
 DGM
 (NODAL OFFICER
 FOR TAR)

CASE ASSEMBLY		NO OFF	MATERIAL	TREATMENT	REMARKS
PART NO.	DESCRIPTIONS				
	SIGNATURE & DATE	SUB: CASE ASSEMBLY			SCALE
TRACED	<i>S. K. Ma</i>	FOR:			STORE DRG. NO.
DRAWN		OF: TRICHY ASSAULT RIFLE			K-7010
CHECKED		DES. REF. NO.			OPERATION NO.
HOS/D&DO		DRG. No.: TAR-RB-K-7010			-
OFFICER/PRDNL.		ORDNANCE FACTORY TIRUCHIRAPPALLI-16.			SHEETS: 01
OFFICER/D&DO	<i>A. B.</i>				SHEET No.: 01
AMENDMENTS	SIG. & DATE	APPROVED ON.			

DIMENSIONS ARE IN mm.
 UNTOLERATED DIMNS. AS PER IS : 2102 (MED)
 MARK DRAWING No.



FINISH:-ON ASSY

BRITISH STANDARDS
 MATL:-B.S.1449:Pt1:1983 CS-40
 ALT MATL1:-B.S.1449:Pt1:1983 CS-50
 ALT MATL2:-B.S.1449:Pt1:1983 CS-60

IN INDIAN STANDARDS
 MATL:-IS 7226-1974, C40
 ALT MATL1:-IS 7226-1974, C-55

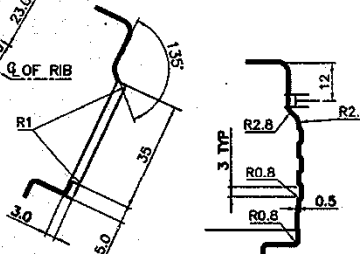
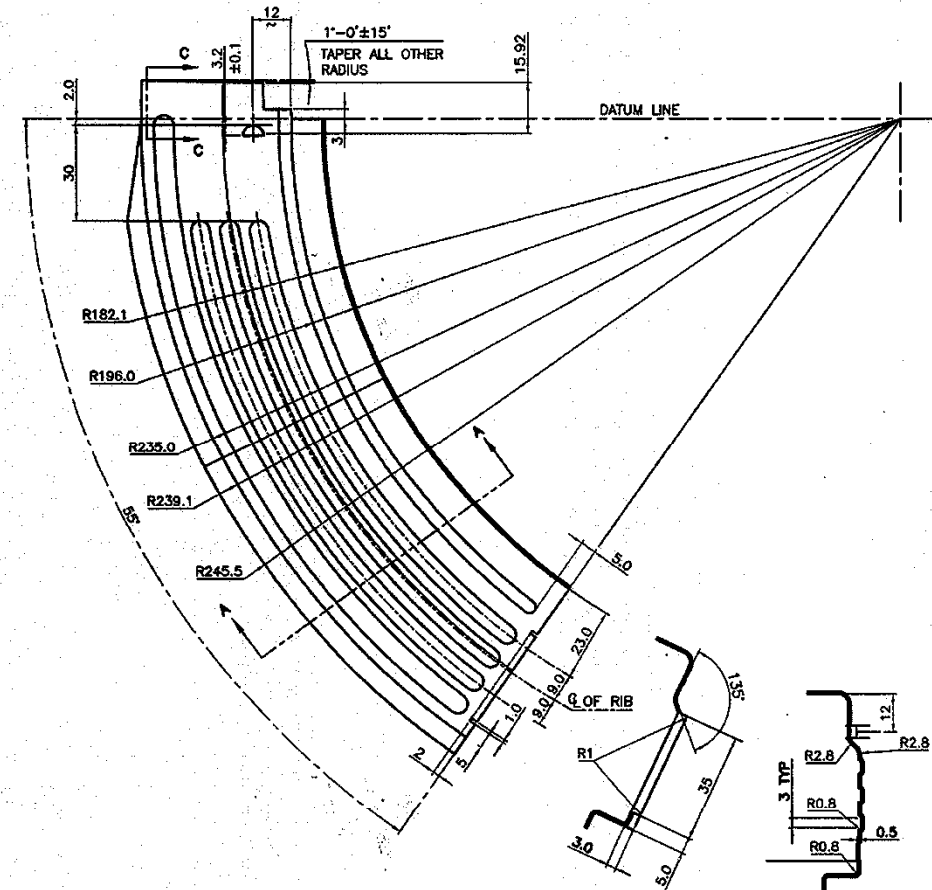
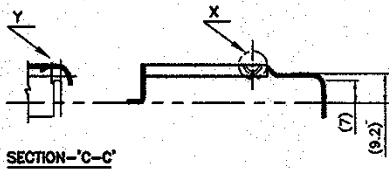
TREAT:- HRD & TEMP. 280 TO 330 VPN

LH PLATE

Se Kua
 DGM
 (NODAL OFFICER
 FOR TAR)

PART NO.	DESCRIPTIONS	NO OF	MATERIAL	TREATMENT	REMARKS
	SUB: LH PLATE FOR: MAGAZINE ASSY (STEEL) OF: TRICHY ASSAULT RIFLE				SCALE ----
TRACED	<i>SR</i>				STORE DRG. NO. K-7011
DRAWN					OPERATION NO. ----
CHECKED					
HQS/D&DO					
OFFICER/ PRODN.					
OFFICER/ D&DO					
AMENDMENTS	SIG. & DATE	APPROVED ON			
					DRG. No.: TAR-RB-K-7011 ORDNANCE FACTORY TIRUCHIRAPPALLI-16. SHEETS: 01 SHEET No.: 01

DIMENSIONS ARE IN mm.
 UNTOLERATED DIMNS. AS PER IS : 2102 (MED)
 MARK DRAWING No.



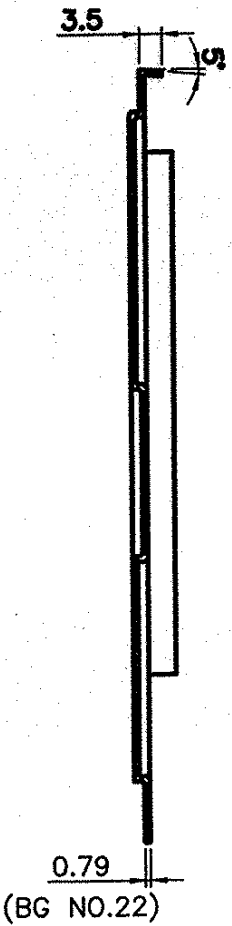
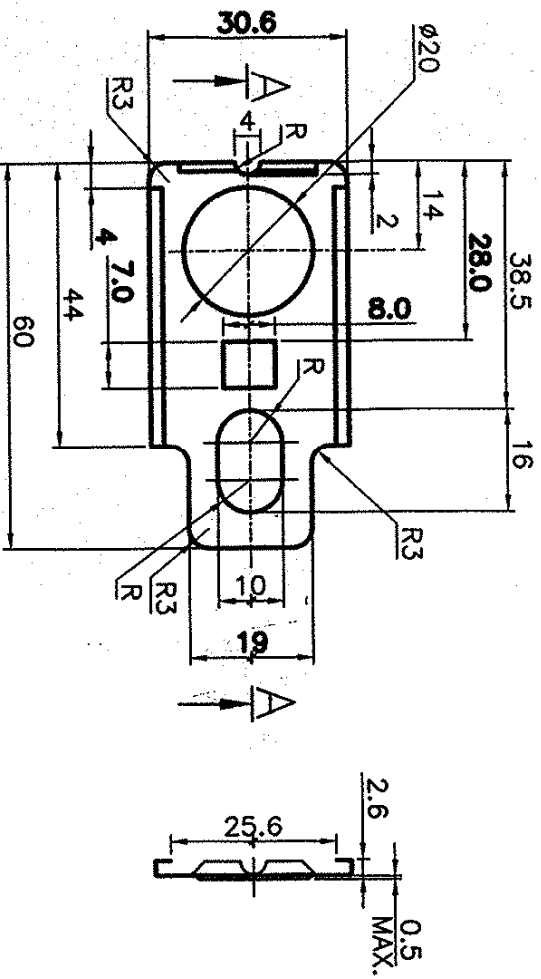
RH PLATE

FINISH:--ON ASSY
 BRITISH STANDARDS
 MATL:--B.S.1449:Pt1:1983 CS-40
 ALT MATL1:--B.S.1449:Pt1:1983 CS-50
 ALT MATL2:--B.S.1449:Pt1:1983 CS-60
 IN INDIAN STANDARDS
 MATL:--IS 7226-1974, C40
 ALT MATL1:--IS 7226-1974, C-55
 TREAT:-- HRD & TEMP. 280 TO 330 VPN

K-7012

PART NO.		DESCRIPTIONS		NO OFF	MATERIAL	TREATMENT	REMARKS
DGM (NODAL OFFICER FOR TAR)		SIGNATURE & DATE					SCALE ---
TRACED		FOR: RH PLATE					STORE DRG. NO. K-7012
DRAWN		OF: MAGAZINE ASSY (STEEL)					
CHECKED		DES. REF. NO.					OPERATION NO. ---
HOS/D&DO		DRG. No.:					SHEETS: 01
OFFICER/PRODN.		TAR-RB-K-7012					
OFFICER/DWG		ORDNANCE FACTORY TIRUCHIRAPPALLI-16.					SHEET No.: 01
AMENDMENTS & DATE		SIG. APPROVED ON.					

DIMENSIONS ARE IN mm.
 UNTOLERATED DIMNS. AS PER IS : 2102 (MED)
 ALL SHARP EDGES TO BE REMOVED



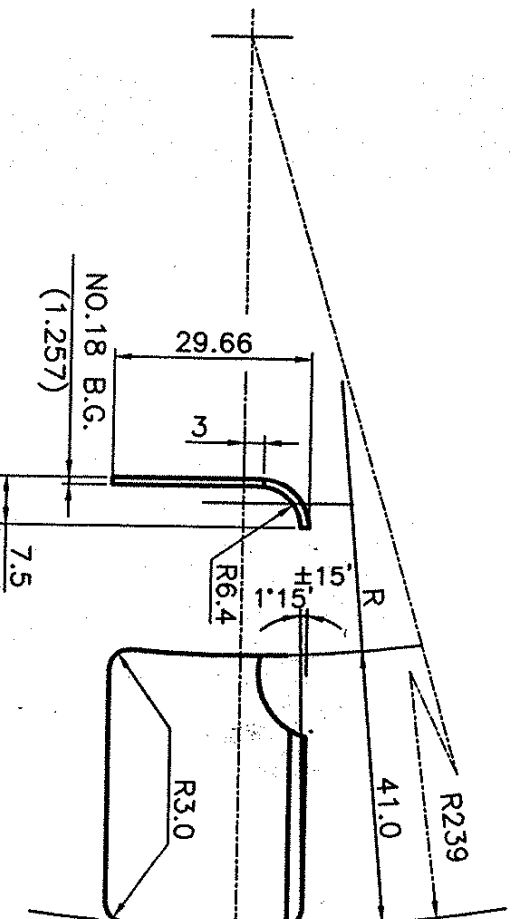
MATL:- B.S.1449 PT.1,1983 Gr. CS 80 SEC.4
FINISH:- PHOSPHATED TO SPECN. WPN/GEN/3 CLASS 2 PAINT RFS
 STOYING BLACK TO SPECN. DEF.1407 MATL FINISH

E. K. K
 DGM
 (NODAL OFFICER
 FOR TAR)

PART NO.	DESCRIPTIONS	SIGNATURE & DATE	NO OFF	MATERIAL	TREATMENT	REMARKS
	PLATE BOTTOM		1	AS ABOVE		
TRACED		<i>[Signature]</i>				
DRAWN						
CHECKED						
HOS/D&DO						
OFFICER/ PRODN.						
OFFICER/ D&DO		<i>[Signature]</i>				
AMENDMENTS & DATE						

SUB: PLATE BOTTOM
 FOR: MAGAZINE (STEEL)
 OF: TRICHY ASSAULT RIFLE
 DES. REF. NO.
 DRG. No.: TAR-RB-K-7001
 ORDNANCE FACTORY
 TIRUCHIRAPPALLI-16.
 SHEETS: 1
 SHEET No.: 1

DIMENSIONS ARE IN mm.
 UNTOLERATED DIMS. AS PER IS : 2102 (MED)
 ALL SHARP EDGES TO BE REMOVED

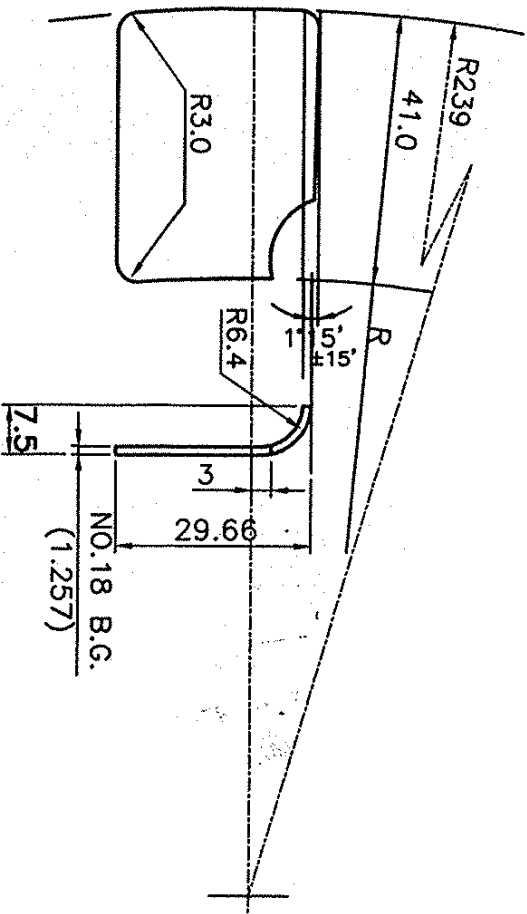


FINISH:--ON ASSY

MATL:--B.S.1449:CS-80 OR IS 7226:C-80

DGM <i>E. Kura</i> (NODAL OFFICER FOR TAR)		PART NO.		LH LUG		AS ABOVE		REMARKS	
TRACED		DESCRIPTIONS & SIGNATURE & DATE		NO OFF		MATERIAL		SCALE NTS	
DRAWN		CHECKED		SUB: LH LUG		TREATMENT		STORE DRG.NO. K-7013	
HOS/D&DO		OFFICER/PRODN.		FOR: MAGAZINE (STEEL)		OPERATION NO.		SHEETS: 1	
OFFICER/D&DO		APPROVED ON.		OF: TRICHY ASSAULT RIFLE		DRG. TAR-RB-K-7013		SHEET No.: 1	
AMENDMENTS & DATE		SIG.		DES. REF. NO.		ORDNANCE FACTORY TIRUCHIRAPPALLI-16.		SHEET No.: 1	

DIMENSIONS ARE IN mm.
 UNTOLERATED DIMNS. AS PER IS : 2102 (MED)
 ALL SHARP EDGES TO BE REMOVED



FINISH:-- ON ASSY

MATL:-- B.S.1449:CS-80 OR IS 7226:C-80

E S.K. Kana DGM (NODAL OFFICER FOR TAR)		RH LUG		AS ABOVE		SCALE	
PART NO.	DESCRIPTIONS	SIGNATURE & DATE	SUB: RH LUG FOR: MAGAZINE (STEEL) OF: TRICHY ASSAULT RIFLE	NO OFF	MATERIAL	TREATMENT	REMARKS
TRACED	DRAWN	CHECKED	DES. REF. NO.	STORE DRG. NO. K-7014			
HOS/D&DO	OFFICER/PRODN.	OFFICER/D&DO	DRG. TAR-RB-K-7014 No.:	OPERATION NO.			
AMENDMENTS & DATE	SIG. APPROVED ON.	FT ORDNANCE FACTORY TIRUCHIRAPPALLI-16.		SHEETS: 1	SHEET No.: 1		