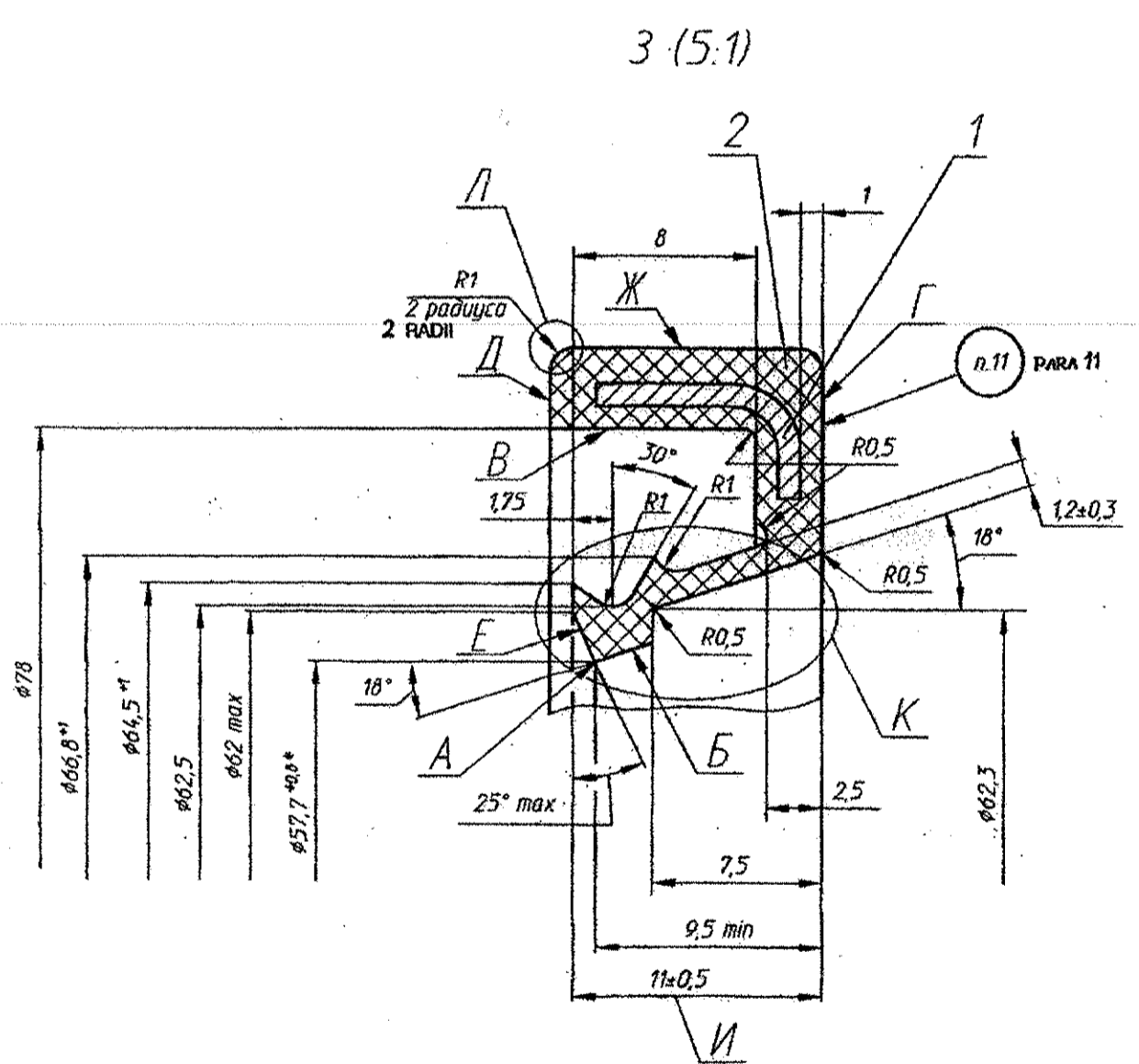
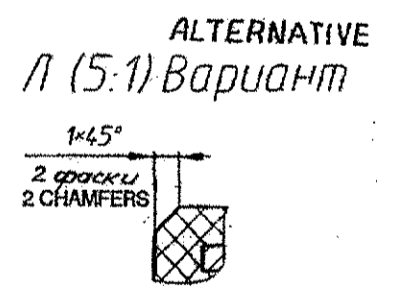
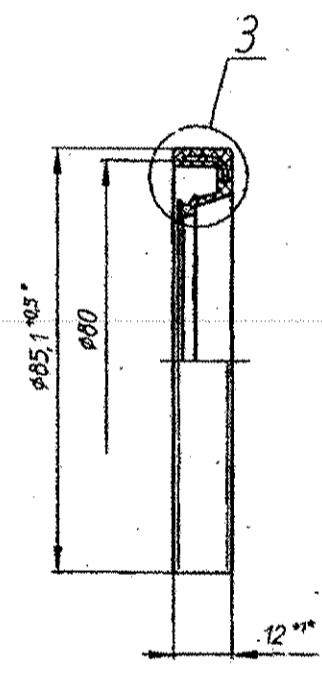
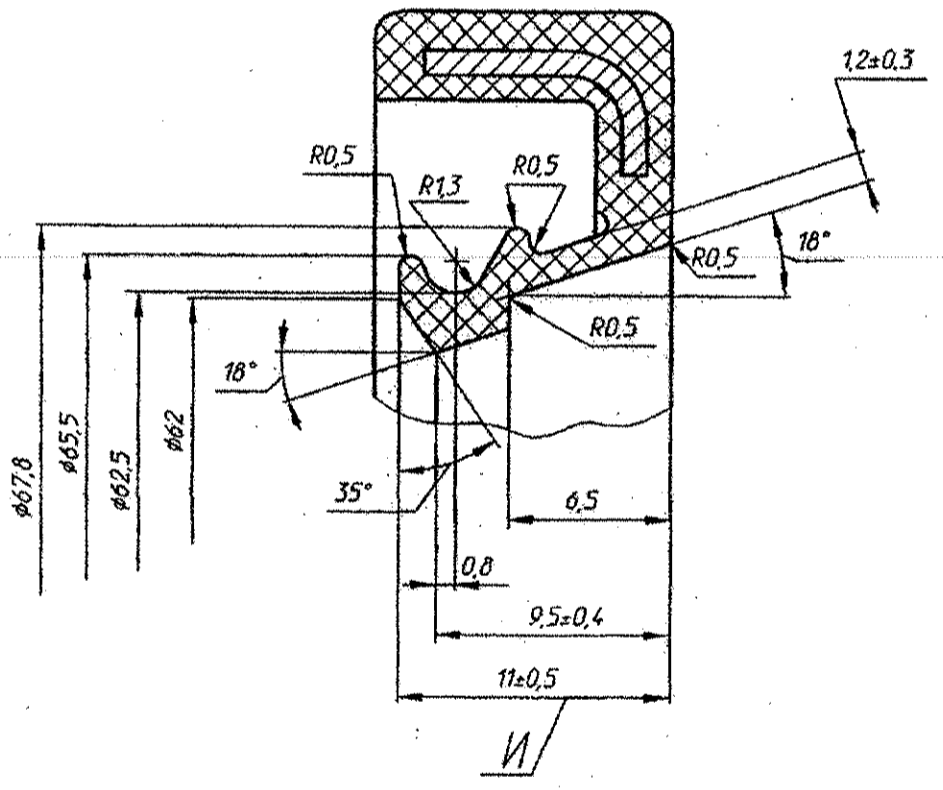


DRAWING NUMBER
54.08.16cbCb

SHEET No 1 OF 1



К (5:1) Вариант
ALTERNATIVE



2. *Control dimensions to 100%.
3. Dimensions, except those marked by *, to be provided by tool.
4. Face A and surface E – are working surfaces. Radius for rounding off working face not to exceed 0.2 mm.
5. Face A should be perpendicular to axis of part. Tolerance for perpendicularity is 0.5 mm (ensure by tool).
6. The following may be permitted on surface B: exposing of frame at the places of fixing in the mould, occasional area of exposed frame upto max. 2 mm and length upto max. two intervals between the centering pins, seeping of glue and minor blow holes.
7. On surfaces F and A bulges to a height in excess of 0.5 mm are not permitted.
8. On surface E projections in height 0.5 mm max. for a distance of min. 0.8 mm from the face A, is permissible. This projection should not go beyond dimension V.
9. It is allowed to make the working face with allowance on surface E, after trimming of allowance, there may be a step of max. 0.5 mm, which does not go beyond dimension V.
10. On surface X to a distance of maximum 2 mm from the faces F or D, there may be trace of grinding of projections.
11. Mark by engraving imprint in the mould with font ПО-3, ПО-5 GOST 2930-62.
12. Other requirements, are as per TY 005216-99, code 253130 and 520.TY1.

DRG. INDIANISED BASED ON RUSSIAN ORIGINAL ISSUE - 13
COMMON TO T-72

356
SUPPLY CODE
U-01-1-2
D90045

F-68
15
SIZE A4 x 4

PILOT SAMPLE SHOULD BE APPROVED BY A H.S.P
BEFORE BULK PRODUCTION.

EST. WT. (Kg) 0.04	TO BE STAMPED OR MARKED WHERE INDICATED THUS # (LETTERS)
ALL SHARP EDGES AND CORNERS TO BE REMOVED UNLESS OTHERWISE STATED MACHINED CORNERS TO HAVE R OUT- SIDE R INSIDE EQUIVALENT CHAMFERS ARE PERMISSIBLE.	

DRN	U.S. Sanjiv	MATERIAL:-	USED ON:- 175.41.008cb-1Cb IN. BULK, 188.45.001cb-3Cb 172.45.068cbCb
CHD	R.S. Reddy	CONTROLLERATE OF QUALITY ASSURANCE (HEAVY VEHICLES)	AVADI
APPD	Chandral	TITLE:-	SEAL ASSY.
DATE	16-6-04	D S CAT NUMBER	DRAWING NUMBER 54.08.16cbCb
SCALE:	1:1		
DIMENSIONS IN mm			
TOLERANCE ON DIMENS UNLESS OTHERWISE STATED IS: 2102-69			
ALL THREADS TO CONFORM TO			
ISSUE	DATE	NATURE OF AMENDMENTS	

54 08 16 cbCb

374589000 IN BULK 175.41.00000-100 189.45.00100-300 COMMON TO J-72 IN CREATED BASED ON RUSSIAN ORIGINAL ISSUE - NIL 356 SUPPLY CODE U-01-12 D90045 F-68 TB	ZONE	ITEM NO	DRAWING NUMBER	D S CAT NUMBER	DESCRIPTION	QTY	REMARKS
			54.08.16cbCb		SEAL ASSY		
		1.	54.09.232		OIL SEAL BODY	1	
		2.	TY-005216-29		RUBBER 783-2	0.015 kg	
	ISSUE	DATE	NATURE OF AMENDMENTS		ISSUE	DATE	NATURE OF AMENDMENTS
	DRN	<i>[Signature]</i>	CONTROLLERATE OF QUALITY ASSURANCE (HEAVY VEHICLES) AVADI				
	CHD	<i>[Signature]</i>	TITLE: SEAL ASSY				
	APPD	<i>[Signature]</i>					
	DATE	16-06-06	SHT. NO. 1 OF 1	D S CAT NUMBER	ITEM LIST FOR 54.08.16cbCb		