

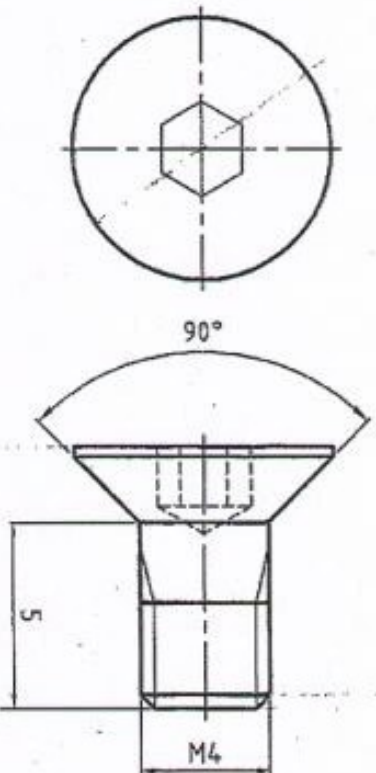
DIMENSIONS ARE IN mm.
UNTOLERATED DIMNS. AS PER IS : 2102. (MED)

THIS DRAWING IS THE PROPERTY OF THE ORDNANCE FACTORY, TIRUCHIRAPPALLI. IT IS TO BE KEPT IN STRICT CONFIDENCE AND NOT TO BE REPRODUCED OR TRANSMITTED IN ANY FORM OR BY ANY MEANS, ELECTRONIC OR MECHANICAL, INCLUDING PHOTOCOPYING, RECORDING, OR BY ANY INFORMATION STORAGE AND RETRIEVAL SYSTEM.

CERTIFIED CORRECT COPY
OF APPROVED DRAWING
AT THIS DATE

Handwritten signature

Design & Drawing Officer
Ordnance Factory,
Tiruchirappalli-630010.



UN CONTROLLED COPY

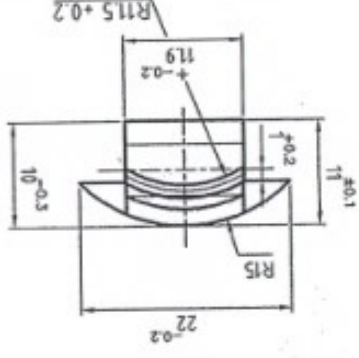
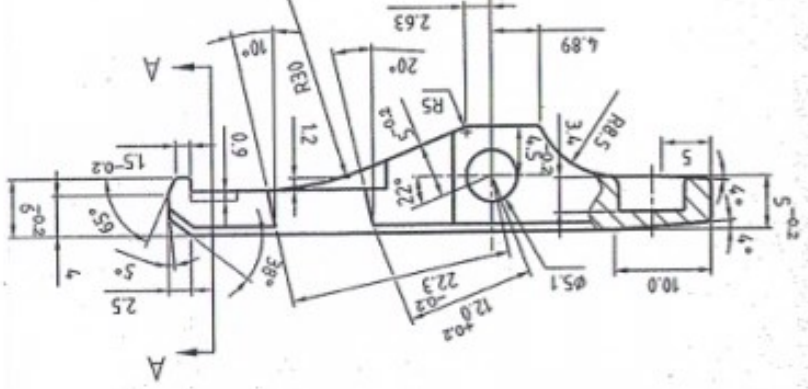
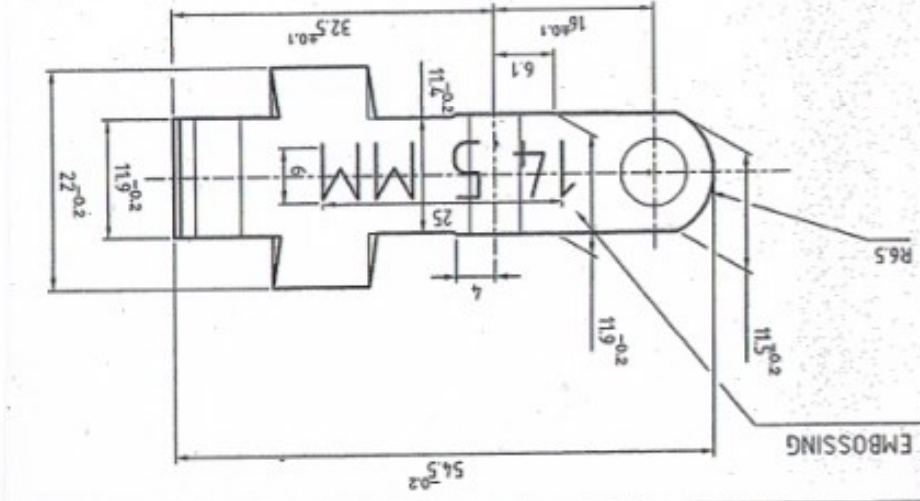
MATERIAL : ⁰HEX.50.CSK. HD. SCREW MAX5 ~~14.5~~ IS:6761-1994. ⁰
HIGH TENSILE

DRG. PROVISIONAL

PART NO.	DESCRIPTIONS	SIGNATURE & DATE	NO OF	MATERIAL	TREATMENT	REMARKS	SCALE
							NTS
TRACED							STORE DRG.NO.
DRAWN	<i>S. Jeyaraj</i>						
CHECKED	<i>S. Jeyaraj</i>						
DESIGNED							
DRDNO							
APPROVED ON	08/2005						
SUB: CSK CAP SCREW MAX5		FOR: 14.5 BOLT ASSY		DRG. No.: 44P 14022*		OPERATION NO.	
OF: 14.5/20mm AMR		DES. REF. NO.		DRG. No.: 44P 14022*		SHEETS: 1	
ORDNANCE FACTORY TIRUCHIRAPPALLI-16.		SHEET No.: 1					

S.I. No 43
DA. No. 002/19 20.3.19
SIC. *[Signature]*
AMENDMENTS & DATE

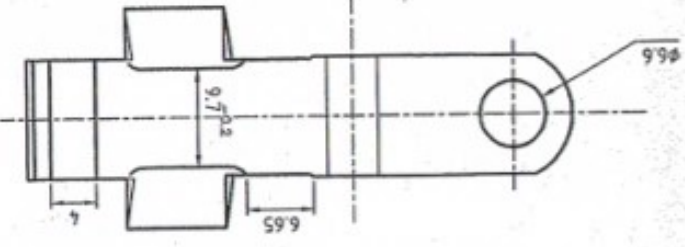
A B C D E F 1 2 3 4



DIMENSIONS ARE IN mm.
 UNTOLERATED DIMS. AS PER IS : 2102 (MED)
 MARK DRAWING No.
 SHARP CORNERS TO BE BLUNT TO R0.2

DRAWING PROVISIONAL

SURFACE FINISH - PHOSPHATED TO SPECIFICATION, JSS : 0465-01-1988
 CLASS-I (ACCELERATED) OIL FINISH.
 MATERIAL: EN 24
 ALT MATL: BS.970 PT.1-1983 GR 817 M4D



PART NO.	DESCRIPTIONS	NO OFF	MATERIAL	TREATMENT	REMARKS

SIGNATURE & DATE	TRACED	DRAWN	CHECKED	DRG. No.:	DRG. No.:

AMENDMENTS & DATE	SIC.

OFFICER/PRODR.	OFFICER/DK/DOO	APPROVED ON:
		04/2007

SCALE	STORE DRG. NO.	OPERATION NO.	SHEETS:	SHEET No.:
14.5MM CAST CARTRIDGE EXTRACTOR			1	1

ORDNANCE FACTORY
 TRUCHIRAPPALLI-16.

FOR: 14.5MM BOLT ASSY.
 OF: 14.5MM/20MM AMR

44P 14023

21/01/07

ON CONTROLLED COPY

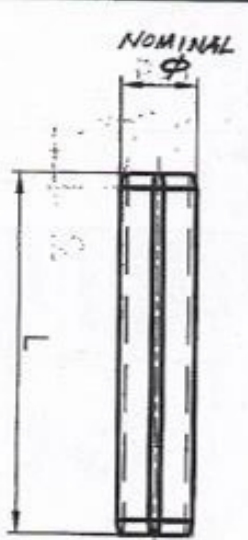
DIMENSIONS ARE IN mm.
UNTOLERATED DIMNS. AS PER IS : 2102 (MED)



CERTIFIED CORRECT COPY
OF APPROVED DRAWINGS
AT THIS DATE

15 JUL 2009

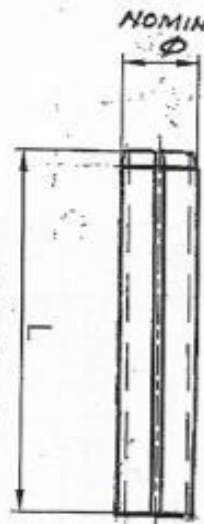
Ordnance Factory,
Design & Drawing Office
Tiruchirappalli-620016



TYPE-A

MATERIAL: SS-316

(STAINLESS STEEL)



TYPE-B

DN CONTROLLED COPY

TYPE	NOMINAL Ø	TOLERANCE	ØD2	±	±	L	DRAWING NO.	REMARKS
A LIGHT	2	±0.1	4.9	0.35	0.2	15.0	44 P 05010*	
	2.5	±0.1	2.3	0.45	0.25	15.0	44 P 05011*	
	3	±0.2	2.7	0.5	0.3	25.0	44 P 03017*	
	4	±0.2	3.4	0.7	0.5	14.0	44 P 04012*	
	5	±0.2	4.4	1.0	0.5	26.0	44 P 04013*	
	6	±0.3	4.9	1.6	0.75	16.0	44 P 03015* & 44 P 14017*	
B HEAVY								

REFER IS : 5988 - 1970

P. Jeyaraj
OIC/PSG

PART NO.	DESCRIPTIONS	SIGNATURE & DATE	NO OFF	MATERIAL	TREATMENT	REMARKS

TRACED
DRAWN: *J. Venkatesh*
CHECKED: *J. Venkatesh*
OIC/D&DO: *J. Venkatesh*
OFFICER/PRODN.:
OFFICER/D&DO:
APPROVED ON: 29/1/2007

SUB: SELLOCK PINS
(DOWEL SPRING PINS)
FOR 14.5/20 mm WDMANSK ANTI-MATERIAL RIFLE
DES. REF. NO. IS : 5988 - 1970
DRG. No.: SEE ABOVE

SCALE NTS
STORE DRG. NO.
OPERATION NO.

ORDNANCE FACTORY
TIRUCHIRAPPALLI-16.

SIG. DATE: 30.3.19
AMENDMENTS & DATE

S/No 84
DA. No. 002/19