

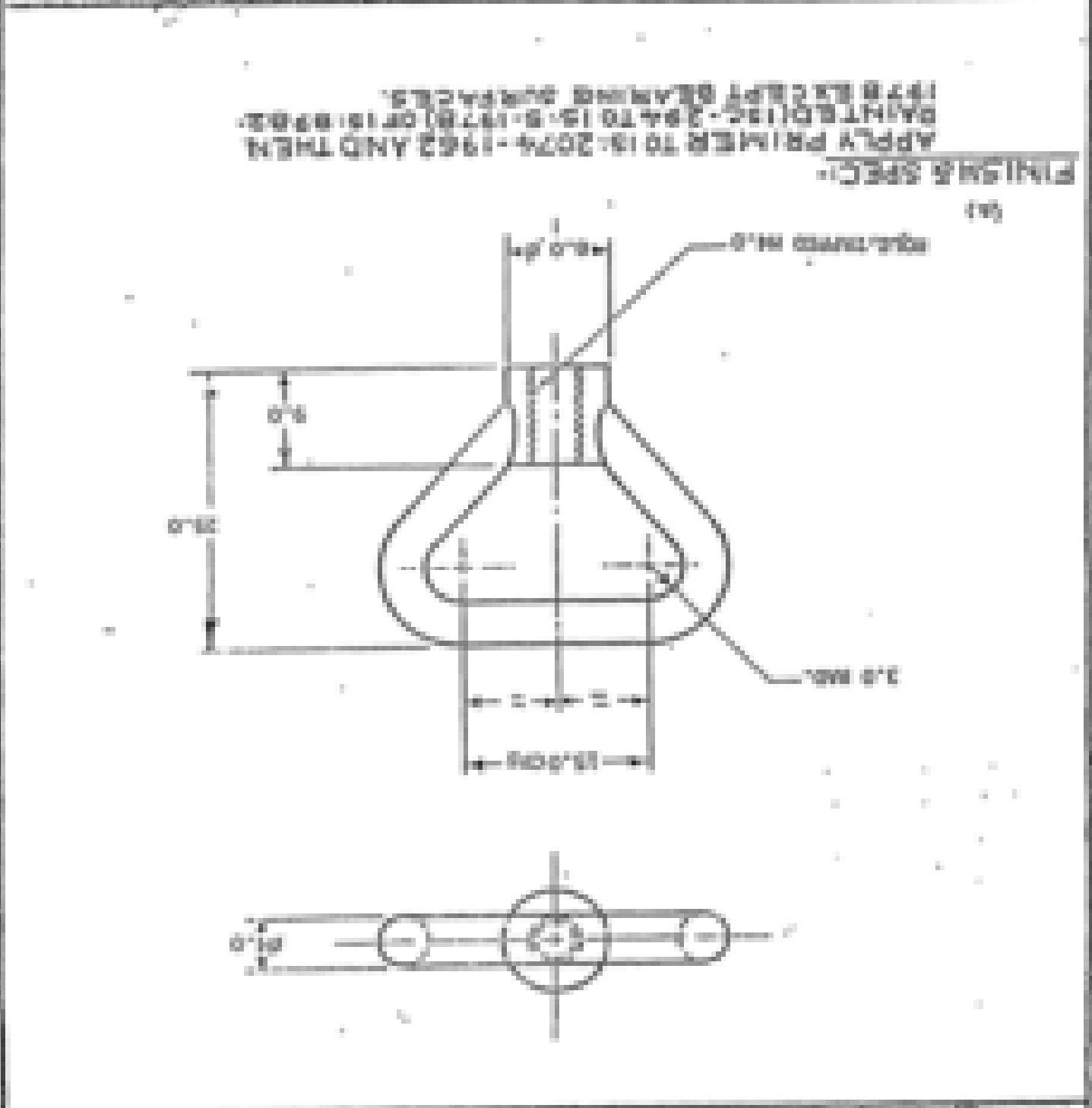


DATE: 10/15/78  
 DRAWN BY: J. J. JONES  
 CHECKED BY: J. J. JONES  
 TITLE: LOOP, STRAP FASTENER

LOOP, STRAP FASTENER

DATE	10/15/78
NO.	1000
DR.	J. J. JONES
CHKD.	J. J. JONES
APPROVED	J. J. JONES
FOR	FOR
CONTROL	CONTROL
DATE	DATE

REV.	1	DATE	10/15/78	DESCRIPTION
REV.	2	DATE		
REV.	3	DATE		
REV.	4	DATE		
REV.	5	DATE		
REV.	6	DATE		
REV.	7	DATE		
REV.	8	DATE		
REV.	9	DATE		
REV.	10	DATE		



DATE: 10/15/78  
 DRAWN BY: J. J. JONES  
 CHECKED BY: J. J. JONES  
 TITLE: LOOP, STRAP FASTENER







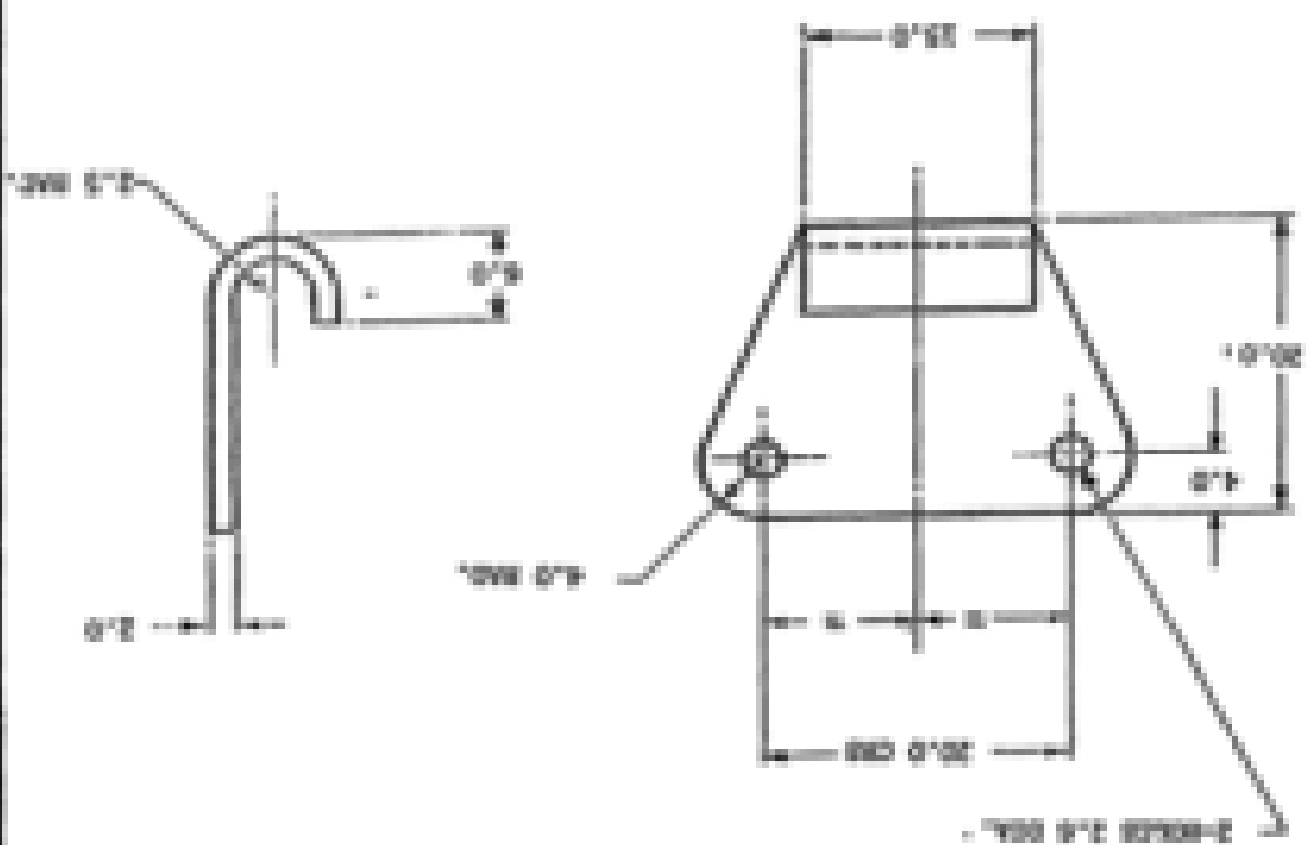
1. ALL DIMENSIONS ARE IN INCHES UNLESS OTHERWISE SPECIFIED.  
 2. DIMENSIONS ARE TO CENTER UNLESS OTHERWISE SPECIFIED.  
 3. DIMENSIONS ARE TO FACE UNLESS OTHERWISE SPECIFIED.  
 4. DIMENSIONS ARE TO CENTER UNLESS OTHERWISE SPECIFIED.  
 5. DIMENSIONS ARE TO FACE UNLESS OTHERWISE SPECIFIED.  
 6. DIMENSIONS ARE TO CENTER UNLESS OTHERWISE SPECIFIED.  
 7. DIMENSIONS ARE TO FACE UNLESS OTHERWISE SPECIFIED.  
 8. DIMENSIONS ARE TO CENTER UNLESS OTHERWISE SPECIFIED.  
 9. DIMENSIONS ARE TO FACE UNLESS OTHERWISE SPECIFIED.  
 10. DIMENSIONS ARE TO CENTER UNLESS OTHERWISE SPECIFIED.

APPROVED FOR CONSTRUCTION BY: [Signature]  
 DATE: 10/15/52

TITLE: HOOK DRAWING NO: IRDE-328/6 DATE: 10/15/52		SPEC: [Blank] PART: [Blank]	
ON: [Blank] USED: [Blank]		CHECK THIS SHEET AGAIN 10/15/52	
ON: [Blank]		APPROPRIATE: [Blank]	
DATE: 10/15/52 FOR: [Blank]		USED: [Blank]	
APPROVED: [Blank]		USED: [Blank]	

APPLY PAINT TO 181-2074-1982 AND THEN  
 PAINTED (181-2074-1982) IS 1982.  
 1978 EXACT DRAWING IS 1982.

FINISH & SPEC:  
 60



FOR EXPLANATION OF DIMENSIONS ETC. SEE DRAWING NO. 001-1882  
 THIRD ANGLE PROJECTION.



5325-0-0211

SCHEDULE FOR DRAWING

INDEX 228

FOR THE DRAWING



NO.	
DATE	
BY	
CHECKED	
APPROVED	

THIS DRAWING IS THE PROPERTY OF THE U.S. GOVERNMENT AND IS LOANED TO YOUR ORGANIZATION. IT AND ITS CONTENTS ARE NOT TO BE DISTRIBUTED OUTSIDE YOUR ORGANIZATION. IF YOU ARE NOT AN AUTHORIZED USER, YOU SHOULD RETURN THIS DRAWING TO THE OFFICE OF THE ASSISTANT SECRETARY FOR MANAGEMENT AND ADMINISTRATION, U.S. DEPARTMENT OF THE INTERIOR, WASHINGTON, D.C. 20548.

SCALE  
AS SHOWN  
UNLESS OTHERWISE NOTED

INDEX 228	1	INTRODUCTION	1-1
INDEX 228	1	GENERAL NOTES	1-2
INDEX 228	1	SECTION 1	1-3
INDEX 228	1	SECTION 2	1-4
INDEX 228	1	SECTION 3	1-5
INDEX 228	1	SECTION 4	1-6
INDEX 228	1	SECTION 5	1-7
INDEX 228	1	SECTION 6	1-8
INDEX 228	1	SECTION 7	1-9
INDEX 228	1	SECTION 8	1-10
INDEX 228	1	SECTION 9	1-11
INDEX 228	1	SECTION 10	1-12
INDEX 228	1	SECTION 11	1-13
INDEX 228	1	SECTION 12	1-14
INDEX 228	1	SECTION 13	1-15
INDEX 228	1	SECTION 14	1-16
INDEX 228	1	SECTION 15	1-17
INDEX 228	1	SECTION 16	1-18
INDEX 228	1	SECTION 17	1-19
INDEX 228	1	SECTION 18	1-20
INDEX 228	1	SECTION 19	1-21
INDEX 228	1	SECTION 20	1-22
INDEX 228	1	SECTION 21	1-23
INDEX 228	1	SECTION 22	1-24
INDEX 228	1	SECTION 23	1-25
INDEX 228	1	SECTION 24	1-26
INDEX 228	1	SECTION 25	1-27
INDEX 228	1	SECTION 26	1-28
INDEX 228	1	SECTION 27	1-29
INDEX 228	1	SECTION 28	1-30
INDEX 228	1	SECTION 29	1-31
INDEX 228	1	SECTION 30	1-32
INDEX 228	1	SECTION 31	1-33
INDEX 228	1	SECTION 32	1-34
INDEX 228	1	SECTION 33	1-35
INDEX 228	1	SECTION 34	1-36
INDEX 228	1	SECTION 35	1-37
INDEX 228	1	SECTION 36	1-38
INDEX 228	1	SECTION 37	1-39
INDEX 228	1	SECTION 38	1-40
INDEX 228	1	SECTION 39	1-41
INDEX 228	1	SECTION 40	1-42
INDEX 228	1	SECTION 41	1-43
INDEX 228	1	SECTION 42	1-44
INDEX 228	1	SECTION 43	1-45
INDEX 228	1	SECTION 44	1-46
INDEX 228	1	SECTION 45	1-47
INDEX 228	1	SECTION 46	1-48
INDEX 228	1	SECTION 47	1-49
INDEX 228	1	SECTION 48	1-50
INDEX 228	1	SECTION 49	1-51
INDEX 228	1	SECTION 50	1-52
INDEX 228	1	SECTION 51	1-53
INDEX 228	1	SECTION 52	1-54
INDEX 228	1	SECTION 53	1-55
INDEX 228	1	SECTION 54	1-56
INDEX 228	1	SECTION 55	1-57
INDEX 228	1	SECTION 56	1-58
INDEX 228	1	SECTION 57	1-59
INDEX 228	1	SECTION 58	1-60
INDEX 228	1	SECTION 59	1-61
INDEX 228	1	SECTION 60	1-62
INDEX 228	1	SECTION 61	1-63
INDEX 228	1	SECTION 62	1-64
INDEX 228	1	SECTION 63	1-65
INDEX 228	1	SECTION 64	1-66
INDEX 228	1	SECTION 65	1-67
INDEX 228	1	SECTION 66	1-68
INDEX 228	1	SECTION 67	1-69
INDEX 228	1	SECTION 68	1-70
INDEX 228	1	SECTION 69	1-71
INDEX 228	1	SECTION 70	1-72
INDEX 228	1	SECTION 71	1-73
INDEX 228	1	SECTION 72	1-74
INDEX 228	1	SECTION 73	1-75
INDEX 228	1	SECTION 74	1-76
INDEX 228	1	SECTION 75	1-77
INDEX 228	1	SECTION 76	1-78
INDEX 228	1	SECTION 77	1-79
INDEX 228	1	SECTION 78	1-80
INDEX 228	1	SECTION 79	1-81
INDEX 228	1	SECTION 80	1-82
INDEX 228	1	SECTION 81	1-83
INDEX 228	1	SECTION 82	1-84
INDEX 228	1	SECTION 83	1-85
INDEX 228	1	SECTION 84	1-86
INDEX 228	1	SECTION 85	1-87
INDEX 228	1	SECTION 86	1-88
INDEX 228	1	SECTION 87	1-89
INDEX 228	1	SECTION 88	1-90
INDEX 228	1	SECTION 89	1-91
INDEX 228	1	SECTION 90	1-92
INDEX 228	1	SECTION 91	1-93
INDEX 228	1	SECTION 92	1-94
INDEX 228	1	SECTION 93	1-95
INDEX 228	1	SECTION 94	1-96
INDEX 228	1	SECTION 95	1-97
INDEX 228	1	SECTION 96	1-98
INDEX 228	1	SECTION 97	1-99
INDEX 228	1	SECTION 98	1-100
INDEX 228	1	SECTION 99	1-101
INDEX 228	1	SECTION 100	1-102

U.S. GOVERNMENT PRINTING OFFICE: 1967 O - 352-001  
 GPO : 1967 O - 352-001



151278-1505  
 KAYSON STEEL SHEET SHELF BRACKETS  
 151278-1505

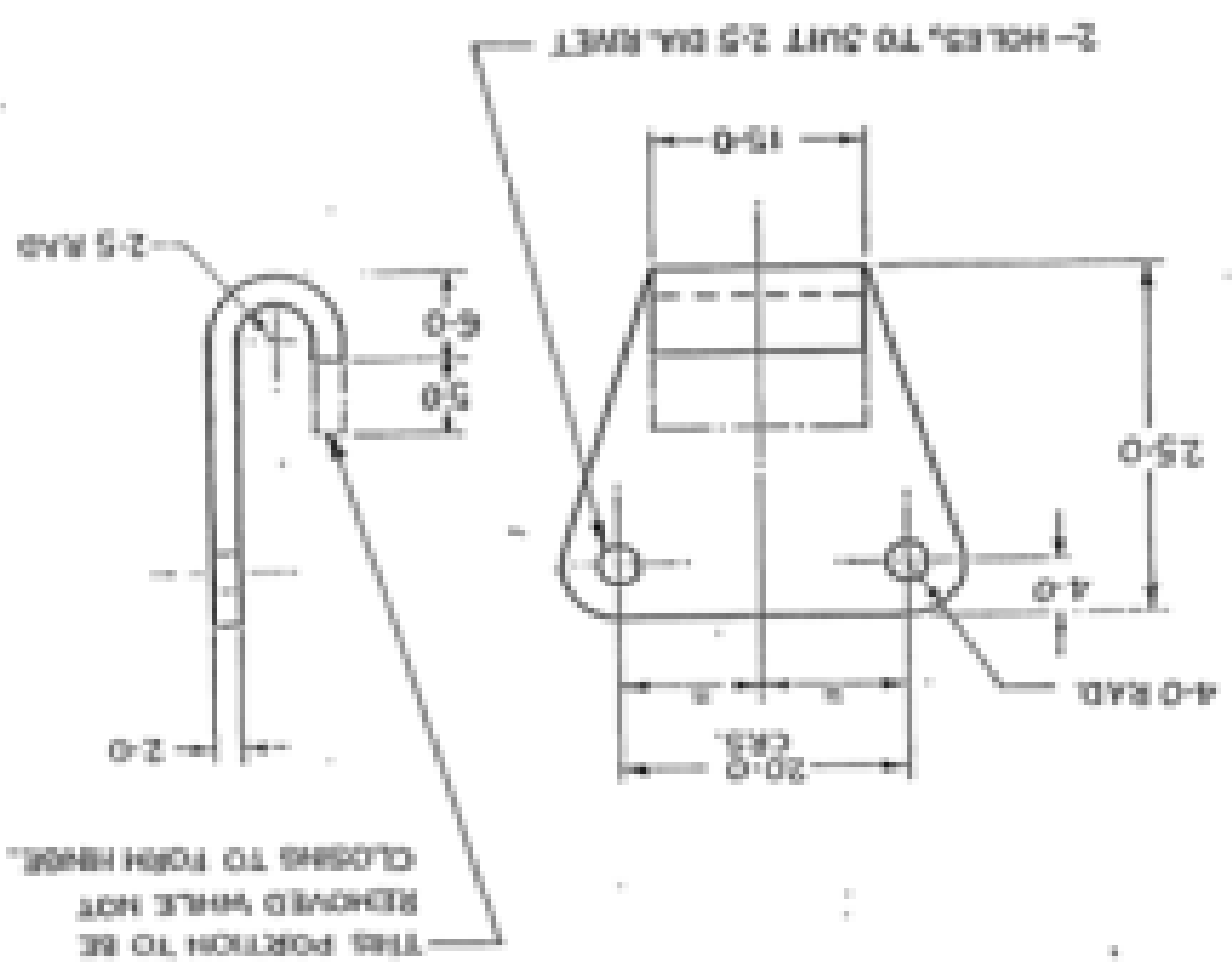
151278-1505  
 KAYSON STEEL SHEET SHELF BRACKETS  
 151278-1505

151278-1505  
 KAYSON STEEL SHEET SHELF BRACKETS  
 151278-1505

IRDE 379/9

APPROVED		CHECKED		SCALE-3:1		DATE	
3/1		3/1		DATE-23.69		14.78	
FOR DIRECTOR		FOR DIRECTOR					
DATE-23.69							

REV.	DESCRIPTION	DATE
1	ISSUED FOR FABRICATION	14.78
2	FOR DIRECTOR	14.78
3	FOR DIRECTOR	14.78
4	FOR DIRECTOR	14.78
5	FOR DIRECTOR	14.78
6	FOR DIRECTOR	14.78
7	FOR DIRECTOR	14.78
8	FOR DIRECTOR	14.78
9	FOR DIRECTOR	14.78
10	FOR DIRECTOR	14.78
11	FOR DIRECTOR	14.78
12	FOR DIRECTOR	14.78
13	FOR DIRECTOR	14.78
14	FOR DIRECTOR	14.78
15	FOR DIRECTOR	14.78
16	FOR DIRECTOR	14.78
17	FOR DIRECTOR	14.78
18	FOR DIRECTOR	14.78
19	FOR DIRECTOR	14.78
20	FOR DIRECTOR	14.78

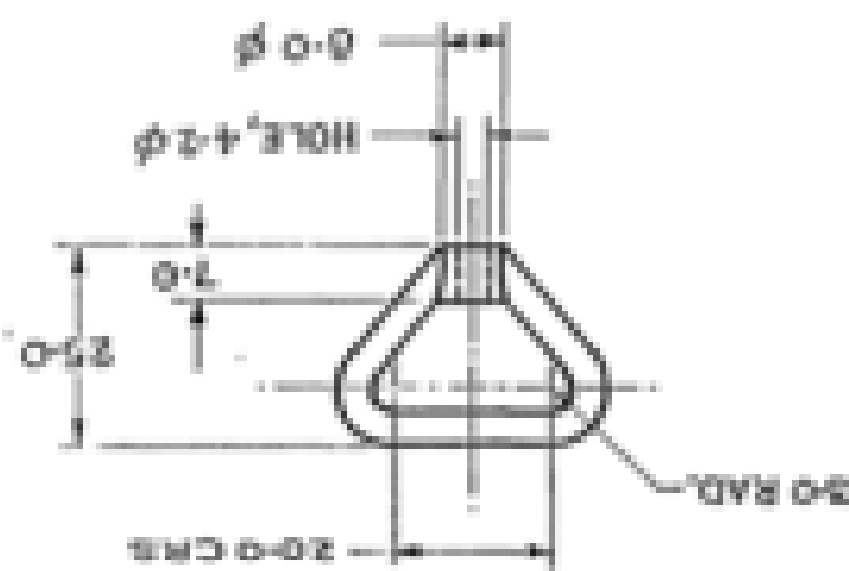


REVISIONS

DATE: 10/10/2019  
 DRAWN BY: [Signature]  
 CHECKED BY: [Signature]  
 APPROVED BY: [Signature]

REVISIONS		DATE	BY	DESCRIPTION
1	AS PER	10/10/2019	[Signature]	ISSUED FOR FABRICATION
2	AS PER	10/10/2019	[Signature]	ISSUED FOR FABRICATION
3	AS PER	10/10/2019	[Signature]	ISSUED FOR FABRICATION
4	AS PER	10/10/2019	[Signature]	ISSUED FOR FABRICATION
5	AS PER	10/10/2019	[Signature]	ISSUED FOR FABRICATION
6	AS PER	10/10/2019	[Signature]	ISSUED FOR FABRICATION
7	AS PER	10/10/2019	[Signature]	ISSUED FOR FABRICATION
8	AS PER	10/10/2019	[Signature]	ISSUED FOR FABRICATION
9	AS PER	10/10/2019	[Signature]	ISSUED FOR FABRICATION
10	AS PER	10/10/2019	[Signature]	ISSUED FOR FABRICATION

DRAWN BY: [Signature]		DATE: 10/10/2019
CHECKED BY: [Signature]		DATE: 10/10/2019
APPROVED BY: [Signature]		DATE: 10/10/2019
SCALE: 1:1		
Dwg. No. IRDE 379/15		





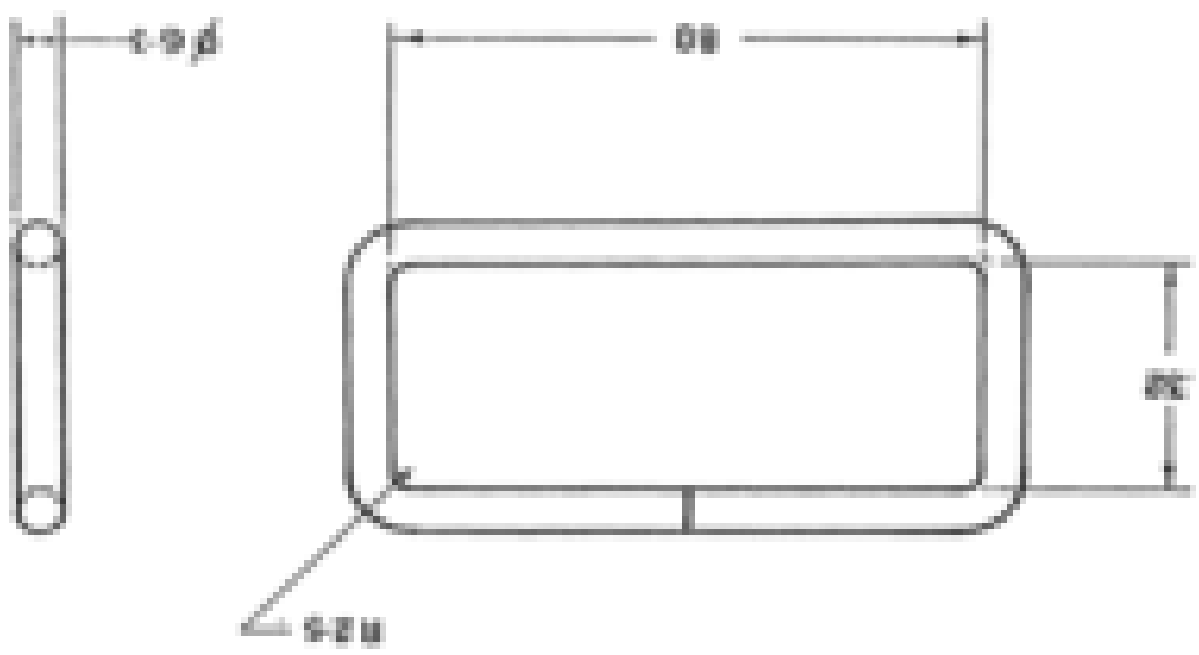
D. C. 010-0186-0170, REV. 1-18-60, PART 1, SHEET 2 OF 2

ALL DIMENSIONS UNLESS OTHERWISE SPECIFIED ARE IN MILLIMETERS  
 DIMENSIONS IN PARENTHESES ARE IN INCHES

# HANDLE, BAIL

REV.	DESCRIPTION	DATE	BY	CHKD.
1	AS SHOWN	1-18-60	[Signature]	[Signature]
2	REVISION			
3	REVISION			
4	REVISION			
5	REVISION			
6	REVISION			
7	REVISION			
8	REVISION			
9	REVISION			
10	REVISION			

QTY	1
UNIT	EA
DESCRIPTION	HANDLE, BAIL
DATE	1-18-60
BY	[Signature]
CHKD.	[Signature]
APPROVED BY	[Signature]
DATE	1-18-60
PROJECT NO.	5340-0186-73
REV.	1613/5



FOR EXPLANATION OF DIMENSIONS BY SEE DETAIL SECTION OF THIS DRAWING  
 DIMENSIONS ARE IN MILLIMETERS











# NOTE SHEET NO. 3

1. TOLERANCE ON FOCAL LENGTH 2%

2. OPTICAL GLASS TO CONFORM TO IS:100 GR. A, IN RESPECT OF STRAIN, REAM AND CORDS AND GR. B, IN RESPECT OF SEED AND BUBBLES.

3. CONCENTRICITY ERROR SHALL NOT EXCEED 1 MINUTE OF AN ARC.

4. CHAMFER ON LENSES SHALL NOT EXCEED 0.25 MM.

5. LENSES SHOULD CONFORM TO IS: 988 FOR GENERAL CONDITION NOT SPECIFIED ABOVE.

6. THE ANTIREFLECTION COATING FOR OBSERVING GLASS SHOULD BE WHITE BAND TYPE. IT TO BE 1.5 HARD ENOUGH TO WITH STAND ABRASION CLEANING WITHOLS TRAYS WIPERS OF THE GRADE OF 800.

7. THE ANTIREFLECTION COATING FOR EXPOSED TO WITH STAND 1.5 HARD ENOUGH TO WITH STAND ABRASION CLEANING WITHOLS

8. SPECIFICITY OF PLAINNESS OF THE POLISHED SURFACE OF A LENS SHALL BE SUCH AS TO GIVE MORE THAN 1 PERCENT REFLECTANCE WHEN TESTED WITH A TEST PLATE.

IRDE 2001

DRG. NO.

SHT-3 OF-3

CAT/PT. NO.

ICEE-000114



















SCHEDULE OF PARTS		DRAWING NO.	
NO.	DESCRIPTION	QTY.	UNIT
1	FLYER	1	EA
2	HANDLE CLIP	2	EA
3	BRACKET, PLATE	2	EA
4	WASHER, PLATE	2	EA
5	SCREW, PLATE, W/PLATE	2	EA
6	SCREW, PLATE, W/PLATE	2	EA
7	SCREW, PLATE, W/PLATE	2	EA
8	SCREW, PLATE, W/PLATE	2	EA
9	SCREW, PLATE, W/PLATE	2	EA
10	SCREW, PLATE, W/PLATE	2	EA
11	SCREW, PLATE, W/PLATE	2	EA
12	SCREW, PLATE, W/PLATE	2	EA
13	SCREW, PLATE, W/PLATE	2	EA
14	SCREW, PLATE, W/PLATE	2	EA
15	SCREW, PLATE, W/PLATE	2	EA
16	SCREW, PLATE, W/PLATE	2	EA
17	SCREW, PLATE, W/PLATE	2	EA
18	SCREW, PLATE, W/PLATE	2	EA
19	SCREW, PLATE, W/PLATE	2	EA
20	SCREW, PLATE, W/PLATE	2	EA
21	SCREW, PLATE, W/PLATE	2	EA
22	SCREW, PLATE, W/PLATE	2	EA
23	SCREW, PLATE, W/PLATE	2	EA
24	SCREW, PLATE, W/PLATE	2	EA
25	SCREW, PLATE, W/PLATE	2	EA
26	SCREW, PLATE, W/PLATE	2	EA
27	SCREW, PLATE, W/PLATE	2	EA
28	SCREW, PLATE, W/PLATE	2	EA
29	SCREW, PLATE, W/PLATE	2	EA
30	SCREW, PLATE, W/PLATE	2	EA
31	SCREW, PLATE, W/PLATE	2	EA
32	SCREW, PLATE, W/PLATE	2	EA
33	SCREW, PLATE, W/PLATE	2	EA
34	SCREW, PLATE, W/PLATE	2	EA
35	SCREW, PLATE, W/PLATE	2	EA
36	SCREW, PLATE, W/PLATE	2	EA
37	SCREW, PLATE, W/PLATE	2	EA
38	SCREW, PLATE, W/PLATE	2	EA
39	SCREW, PLATE, W/PLATE	2	EA
40	SCREW, PLATE, W/PLATE	2	EA
41	SCREW, PLATE, W/PLATE	2	EA
42	SCREW, PLATE, W/PLATE	2	EA
43	SCREW, PLATE, W/PLATE	2	EA
44	SCREW, PLATE, W/PLATE	2	EA
45	SCREW, PLATE, W/PLATE	2	EA
46	SCREW, PLATE, W/PLATE	2	EA
47	SCREW, PLATE, W/PLATE	2	EA
48	SCREW, PLATE, W/PLATE	2	EA
49	SCREW, PLATE, W/PLATE	2	EA
50	SCREW, PLATE, W/PLATE	2	EA
51	SCREW, PLATE, W/PLATE	2	EA
52	SCREW, PLATE, W/PLATE	2	EA
53	SCREW, PLATE, W/PLATE	2	EA
54	SCREW, PLATE, W/PLATE	2	EA
55	SCREW, PLATE, W/PLATE	2	EA
56	SCREW, PLATE, W/PLATE	2	EA
57	SCREW, PLATE, W/PLATE	2	EA
58	SCREW, PLATE, W/PLATE	2	EA
59	SCREW, PLATE, W/PLATE	2	EA
60	SCREW, PLATE, W/PLATE	2	EA
61	SCREW, PLATE, W/PLATE	2	EA
62	SCREW, PLATE, W/PLATE	2	EA
63	SCREW, PLATE, W/PLATE	2	EA
64	SCREW, PLATE, W/PLATE	2	EA
65	SCREW, PLATE, W/PLATE	2	EA
66	SCREW, PLATE, W/PLATE	2	EA
67	SCREW, PLATE, W/PLATE	2	EA
68	SCREW, PLATE, W/PLATE	2	EA
69	SCREW, PLATE, W/PLATE	2	EA
70	SCREW, PLATE, W/PLATE	2	EA
71	SCREW, PLATE, W/PLATE	2	EA
72	SCREW, PLATE, W/PLATE	2	EA
73	SCREW, PLATE, W/PLATE	2	EA
74	SCREW, PLATE, W/PLATE	2	EA
75	SCREW, PLATE, W/PLATE	2	EA
76	SCREW, PLATE, W/PLATE	2	EA
77	SCREW, PLATE, W/PLATE	2	EA
78	SCREW, PLATE, W/PLATE	2	EA
79	SCREW, PLATE, W/PLATE	2	EA
80	SCREW, PLATE, W/PLATE	2	EA
81	SCREW, PLATE, W/PLATE	2	EA
82	SCREW, PLATE, W/PLATE	2	EA
83	SCREW, PLATE, W/PLATE	2	EA
84	SCREW, PLATE, W/PLATE	2	EA
85	SCREW, PLATE, W/PLATE	2	EA
86	SCREW, PLATE, W/PLATE	2	EA
87	SCREW, PLATE, W/PLATE	2	EA
88	SCREW, PLATE, W/PLATE	2	EA
89	SCREW, PLATE, W/PLATE	2	EA
90	SCREW, PLATE, W/PLATE	2	EA
91	SCREW, PLATE, W/PLATE	2	EA
92	SCREW, PLATE, W/PLATE	2	EA
93	SCREW, PLATE, W/PLATE	2	EA
94	SCREW, PLATE, W/PLATE	2	EA
95	SCREW, PLATE, W/PLATE	2	EA
96	SCREW, PLATE, W/PLATE	2	EA
97	SCREW, PLATE, W/PLATE	2	EA
98	SCREW, PLATE, W/PLATE	2	EA
99	SCREW, PLATE, W/PLATE	2	EA
100	SCREW, PLATE, W/PLATE	2	EA

APPROVALS

DATE

TIME

LOCATION

NAME

DESIGNATION

INITIALS

NAME

DESIGNATION

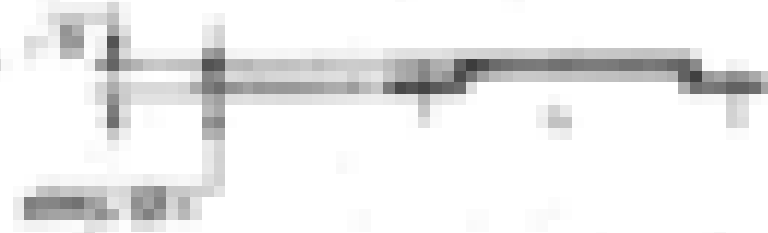
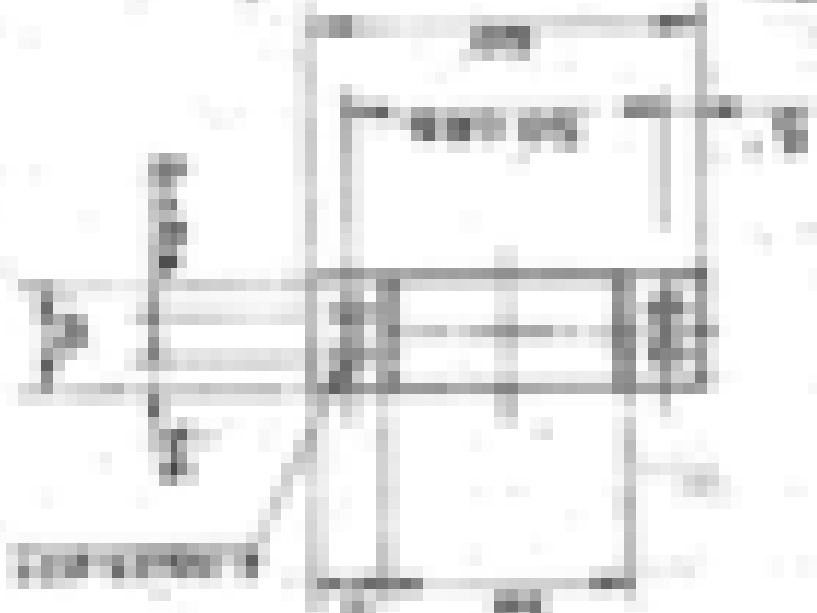
INITIALS

REMARKS

REMARKS

REMARKS

REMARKS



APPROVALS

REMARKS

REMARKS

REMARKS

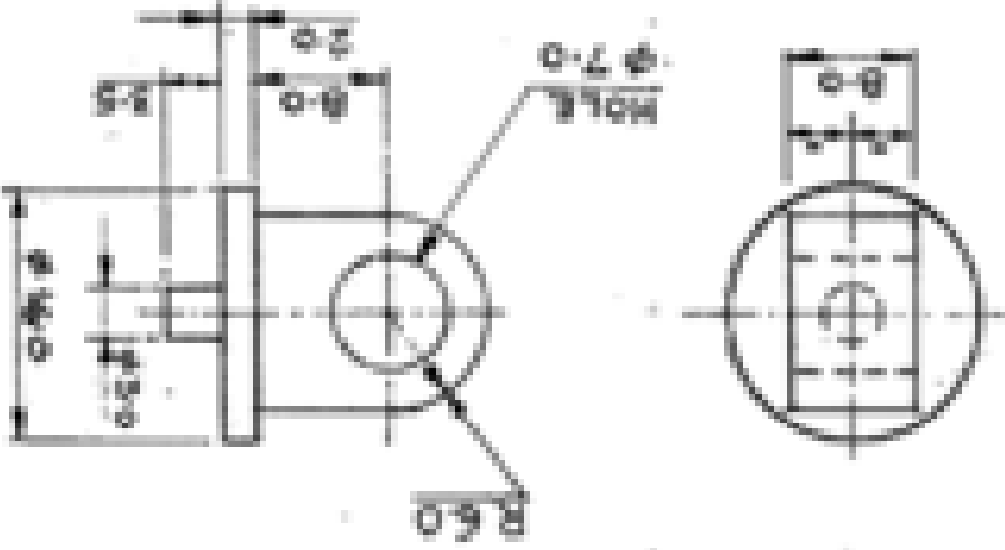
REMARKS

O. F. D. DUNN

**FASTENER SET TURN LOCK**

**EYE LOCKING**

DRG NO. 100-2348



MAT'L SPECN -

STEEL, C-50 TO IS:1570-1961.

FINISH SPECN -

APPLY PRIMER TO IS:2074-1962 AND THEN  
PAINTED (DSC-294 TO IS:5-1778) OR IS:8882-  
1978, EXCEPT BEARING SURFACES.

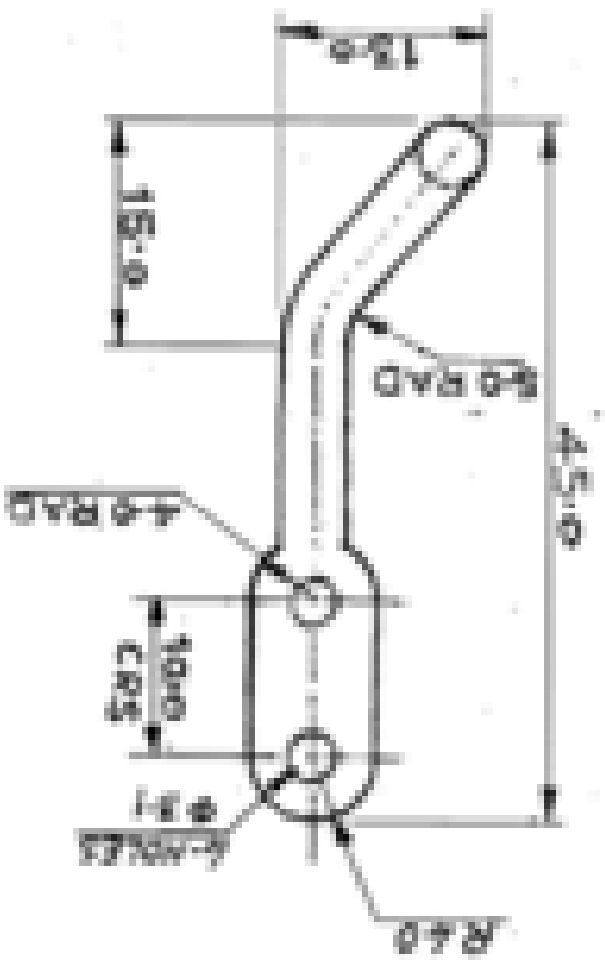
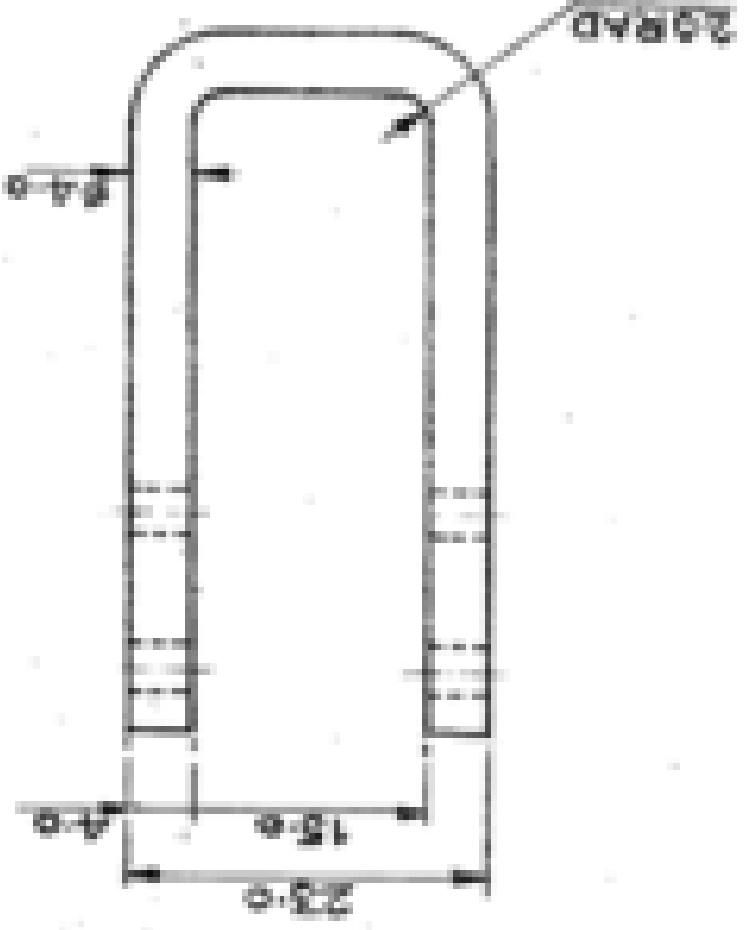
DRAWING NO.		APPROVED		AMENDMENTS	
DATE: 1 1961		DATE: 1 1961			
MATERIAL		DRG. NO.			
TREAT		TRCD.			
SCALE: 2:1		DATE: 1 1961			

# ORD FY D DUN

## FASTENER SET TURN LOCK

### HANDLE CLIP

DRG. NO. TROF-22813



MAT. & SPEC.

STEEL CLASS-4 TO IS: 1827 - 1978

FINISH & SPEC.

APPLY PRIMER TO IS: 2074-1962 AND THEN

PAINTED (ISC-294 TO IS: 1800 OF IS: 89 82

1978 EXCEPT BEARING SURFACES.

DIS-48 SCALING	DIR. GROUP:	
WALT TREAT	TR:	
AS ABOVE ABOVE	CH-104	
SHEDS BELLISH	APPROVED	
DRG. NO.		
MCT/MS		

AMENDMENTS	





1

2

3

4

5

6

7

8

9

10

11

12

13

14

15

16

17

18

19

20

21

22

23

24

25

26

27

28

29

30

31

32

33

34

35

36

37

38

39

40

41

42

43

44

45

46

47

48

49

50

51

52

53

54

55

56

57

58

59

60

61

62

63

64

65

66

67

68

69

70

71

72

73

74

75

76

77

78

79

80

81

82

83

84

85

86

87

88

89

90

91

92

93

94

95

96

97

98

99

100

101

102

103

104

105

106

107

108

109

110

111

112

113

114

115

116

117

118

119

120

121

122

123

124

125

126

127

128

129

130

131

132

133

134

135

136

137

138

139

140

141

142

143

144

145

146

147

148

149

150

151

152

153

154

155

156

157

158

159

160

161

162

163

164

165

166

167

168

169

170

171

172

173

174

175

176

177

178

179

180

181

182

183

184

185

186

187

188

189

190

191

192

193

194

195

196

197

198

199

200

201

202

203

204

205

206

207

208

209

210

211

212

213

214

215

216

217

218

219

220

221

222

223

224

225

226

227

228

229

230

231

232

233

234

235

236

237

238

239

240

241

242

243

244

245

246

247

248

249

250

251

252

253

254

255

256

257

258

259

260

261

262

263

264

265

266

267

268

269

270

271

272

273

274

275

276

277

278

279

280

281

282

283

284

285

286

287

288

289

290

291

292

293

294

295

296

297

298

299

300

301

302

303

304

305

306

307

308

309

310

311

312

313

314

315

316

317

318

319

320

321

322

323

324

325

326

327

328

329

330

331

332

333

334

335

336

337

338



UNITED STATES

DEPARTMENT OF COMMERCE

OFFICE OF THE SECRETARY

WASHINGTON, D. C.

1917

NOV 15

1917

FORM NO. 1

OFFICE OF THE SECRETARY

WASHINGTON, D. C.

NOV 15 1917

UNITED STATES DEPARTMENT OF COMMERCE

OFFICE OF THE SECRETARY

WASHINGTON, D. C.

NOV 15 1917

UNITED STATES DEPARTMENT OF COMMERCE

OFFICE OF THE SECRETARY

WASHINGTON, D. C.

NOV 15 1917

UNITED STATES DEPARTMENT OF COMMERCE

OFFICE OF THE SECRETARY

WASHINGTON, D. C.

NOV 15 1917

UNITED STATES DEPARTMENT OF COMMERCE

OFFICE OF THE SECRETARY

WASHINGTON, D. C.

NOV 15 1917

UNITED STATES DEPARTMENT OF COMMERCE

OFFICE OF THE SECRETARY

WASHINGTON, D. C.

NOV 15 1917

UNITED STATES DEPARTMENT OF COMMERCE

OFFICE OF THE SECRETARY

WASHINGTON, D. C.

NOV 15 1917

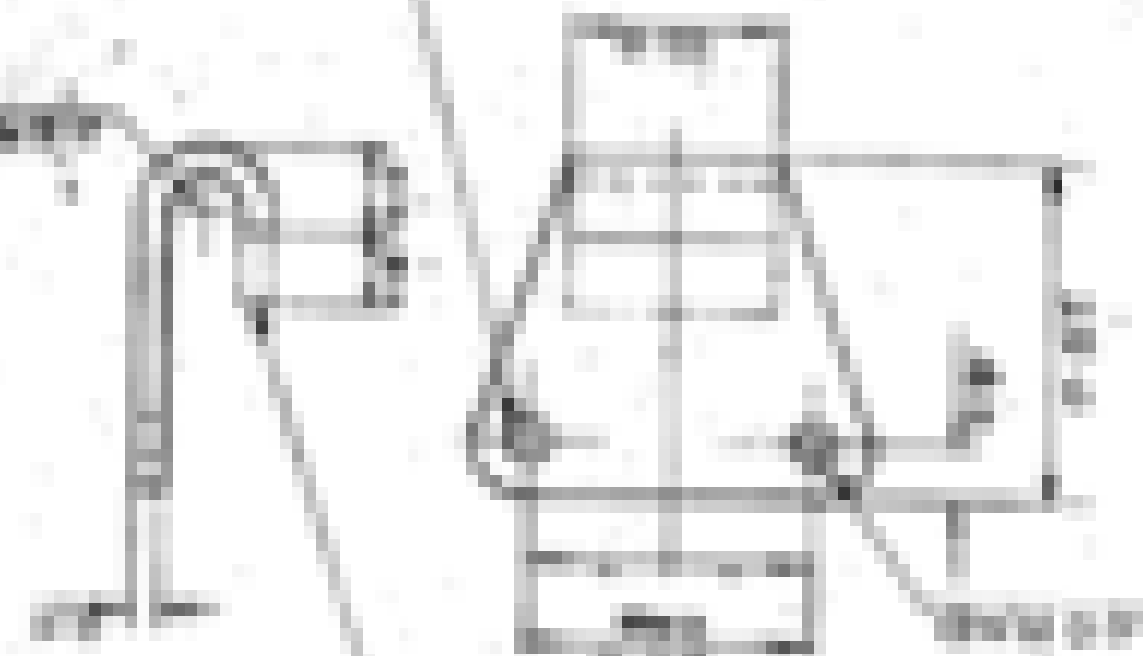
UNITED STATES DEPARTMENT OF COMMERCE

OFFICE OF THE SECRETARY

WASHINGTON, D. C.

NOV 15 1917

UNITED STATES DEPARTMENT OF COMMERCE



UNITED STATES DEPARTMENT OF COMMERCE  
 OFFICE OF THE SECRETARY  
 WASHINGTON, D. C.

NOV 15 1917

UNITED STATES DEPARTMENT OF COMMERCE

NOV 15 1917

UNITED STATES DEPARTMENT OF COMMERCE

OFFICE OF THE SECRETARY

WASHINGTON, D. C.

NOV 15 1917



CABLE CARRYING

GOGGLES N.V.P - 102 A

DATE: 10/15/58

HANDLE

TITLE OF OPERATION

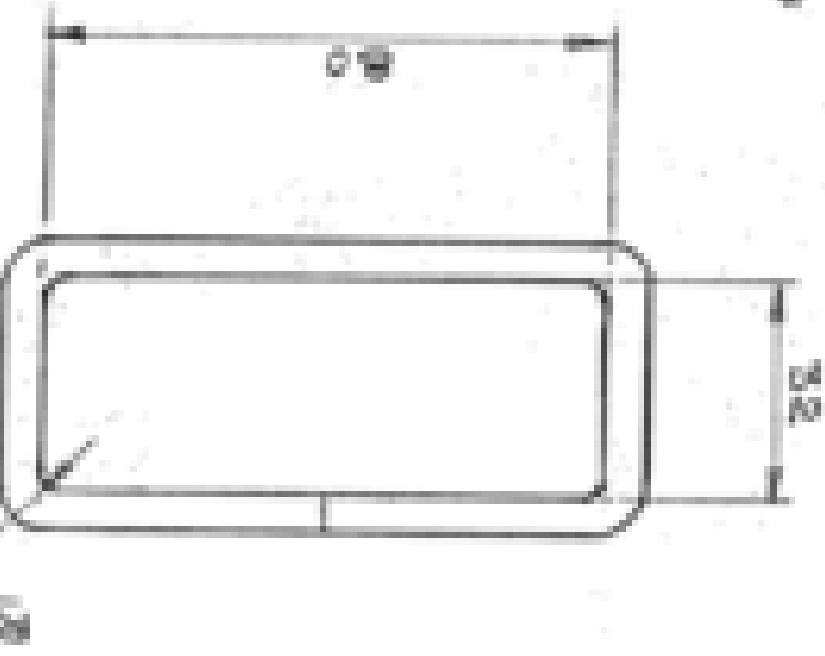
INDICATE POSITION OF HOLE

MCT-1041A

GEORGE FACTORY, DIMENSION

FINISH - APPLY BLENK TO 15:504-1922  
THEN CENTER (SEE 204 TO 15:504)  
OF 15:502-1922 EXCEPT BEARING  
SURFACES

MATT #  
SPECN  
STEEL NO: 4432-C10



DIMENSIONS ARE IN INCH  
EXCEPT DIMENSIONS MARKED THIS  
SYMBOL DIMENSIONS MARKED THIS  
SYMBOL ARE TO BE MARKED ON  
DRAWING IN INCH

MCT/1641A		APPROVED		DIMENSIONS	
SHEET NO.		DATE		O.P.D./D.O.S	
AS ABOVE		TR		A DAY TO/NO D/15-111	
MATT		TR			
SCALE 1/16		TR			

CASE CARTRIDGE

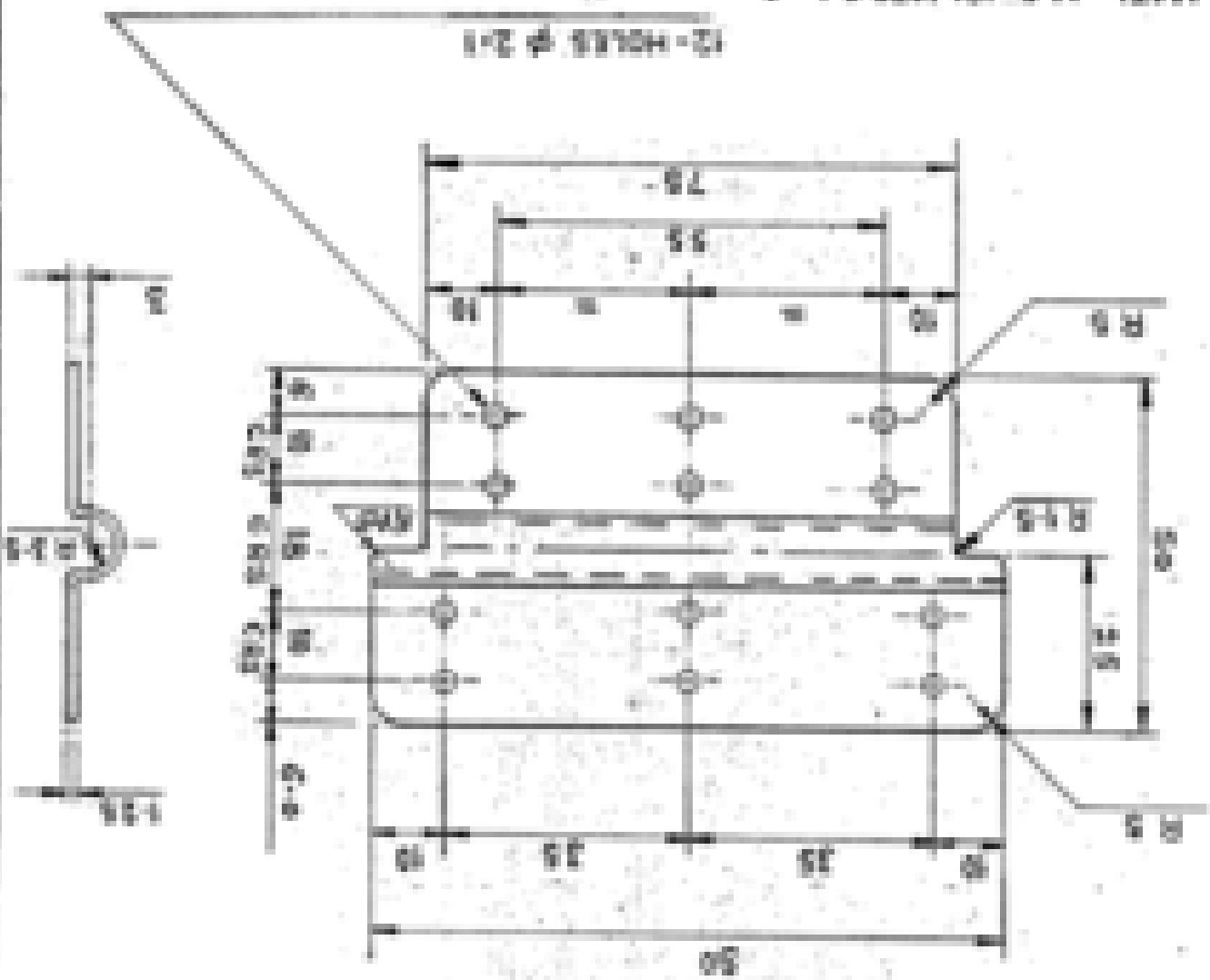
Part No. GOGGLES, PASSIVE NIGHT VISION 102 A

PLATE

TITLE OR OPERATION

THIRD ANGLE PROJECTION

MCT-164A



MATL. M.S. 101879 Q&L S

FINISH - APPLY PRIMER TO 161234  
 WITH THEN PENTON LK 25  
 TO 185-1841 18 2002  
 THIS EXCEPT DRAWING  
 DAMAGE

REQUIRE DIMENSIONS MARKED THIS  $\phi$   
 SPECIFICATION MARKED THIS TO BE MARKED ON

DWG. 9-4-58 SCALE 1:1

MATL. AS ABOVE  
TREAT

SHEET 1 OF 1

DRAWING NO.

MCT/164A

REV. DATE 12/04 07-13-2002  
 DIMENSIONS  
 07/01/02

GEORGE W. BROWN, DEPARTMENT

Vertical text on the right edge of the page.

Original Factory, Dehradun

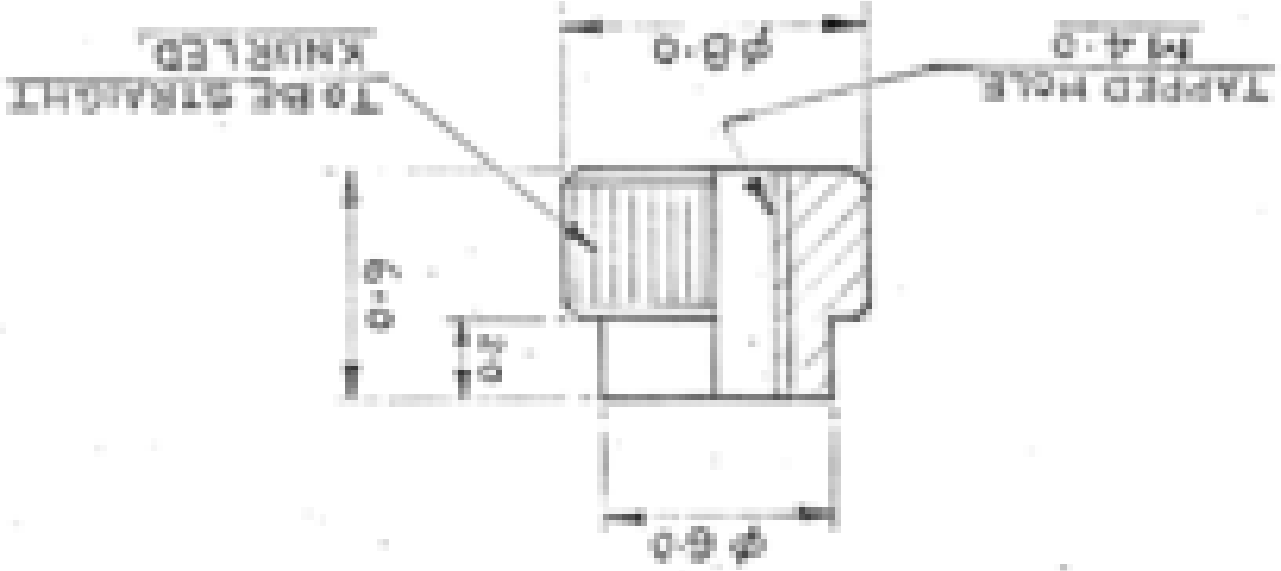
CASE, CARRYING

GOGGLES, NIGHT VISION PASSIVE FOR A  
 DRAWN: JAL-B/3/16 NUT, PLAIN, KNURLED

OPERATOR TITLE OF: OPERATOR OPERATION

THIS WILL SECTION

MCT-1646/1



MATL: STEEL ROD, IS: 7283-1974 (ENRICH. AL. COMPOSITION) 30 CB OF 1915 TO P.L. 1975.

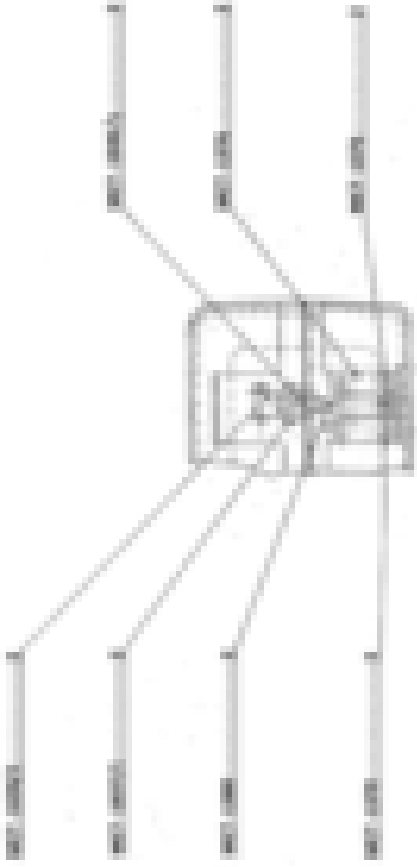
FINISH: -

APPLY FINISH TO IS 7283-1974 AND ENRICH. AL. COMPOSITION (30 CB OF 1915 TO P.L. 1975) OF ALL SURF. - IN EXCEPT PLACING SURFACES.

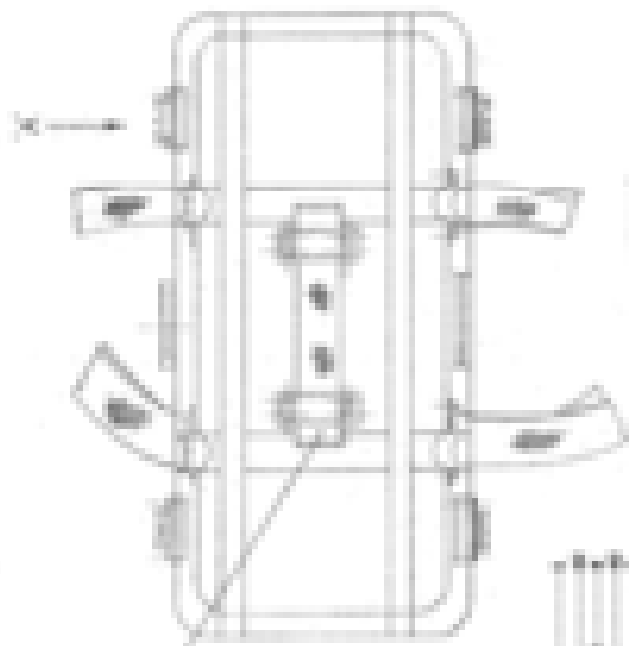
DIMENSIONS ARE IN MM  
 REPORTING DIMENSIONS MARKED THIS ©  
 NEGATIVE DIMENSIONS MARKED THIS ©

DATE: 16-4-75	DRW. NO: 1646/1	SCALE: 1:1	NO. OF SHEETS: 1	SHEET NO: 1
DESIGNER: [Signature]	CHECKED: [Signature]	APPROVED: [Signature]	DATE: 16-4-75	TIME: 10:30 AM
PROJECT: NIGHT VISION PASSIVE FOR A		DRAWING NO: MCT-1646/1		

CONSTRUCTION AND USE OF DRAWING TO BE MADE IN U.S. STANDARD UNITS



PART VIEW IN DIRECTION OF ARROW 'X'



1. THE DRAWING IS TO BE MADE IN U.S. STANDARD UNITS

2. THE DRAWING IS TO BE MADE IN U.S. STANDARD UNITS

3. THE DRAWING IS TO BE MADE IN U.S. STANDARD UNITS

4. THE DRAWING IS TO BE MADE IN U.S. STANDARD UNITS



5. THE DRAWING IS TO BE MADE IN U.S. STANDARD UNITS

CAM CARRYING LIGHT WEIGHT VISION MACHINE 3.00 mm. RIFLE OPTICALLY

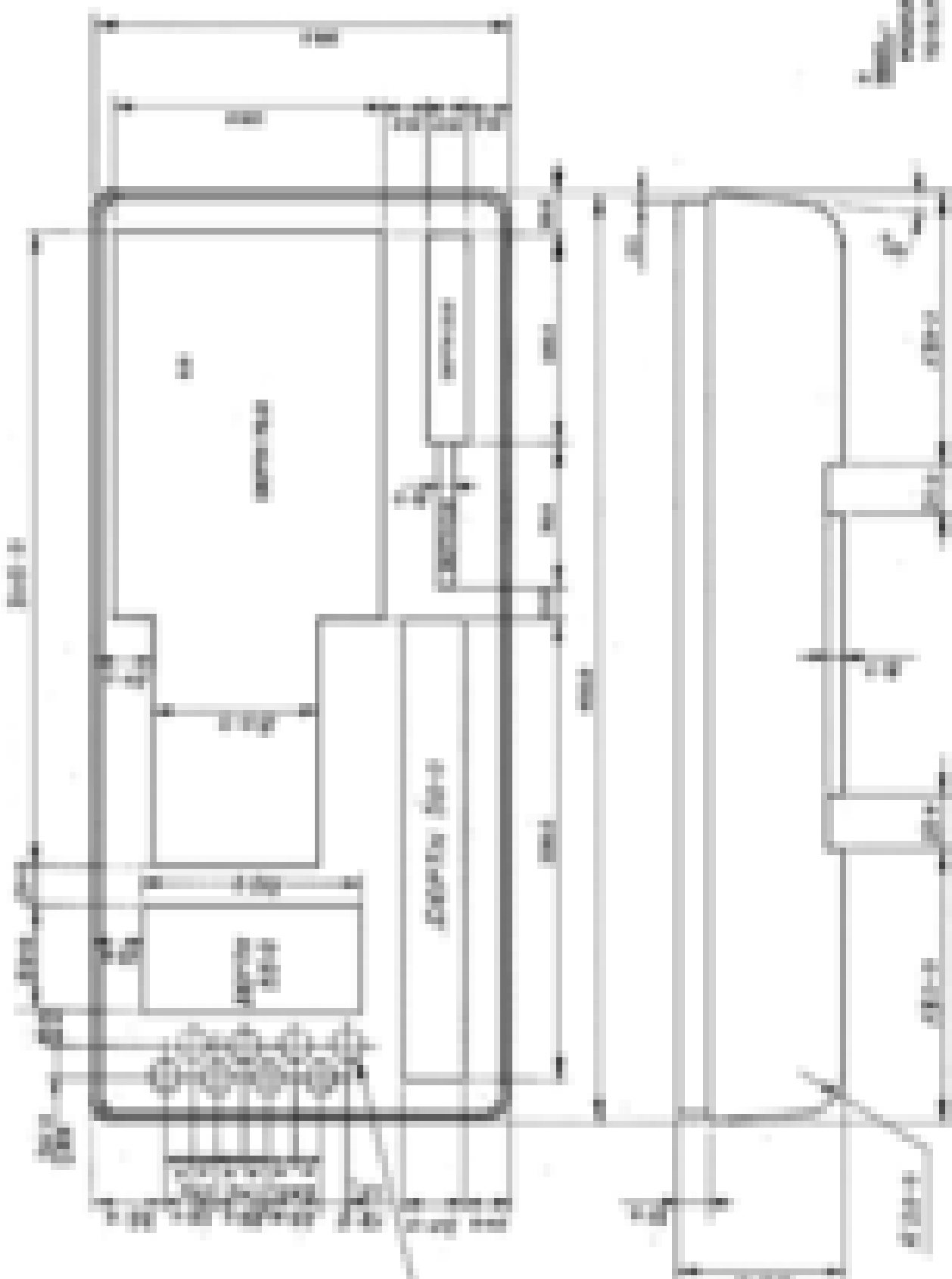
ASSEMBLY DRAWING

DATE	BY	CHECKED

NO.	REV.	DATE	BY

100-100000-001





Scale: 1/4" = 1'-0"

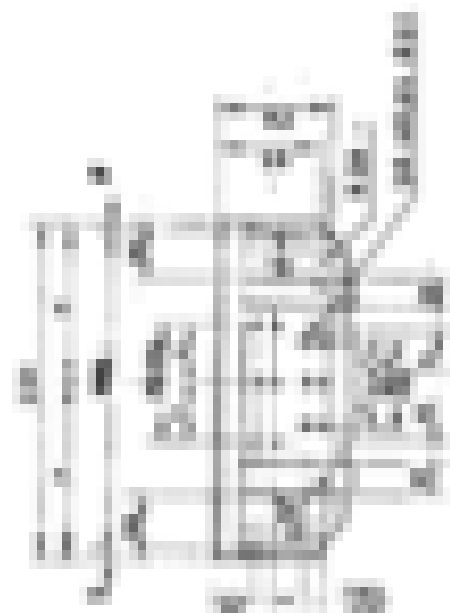
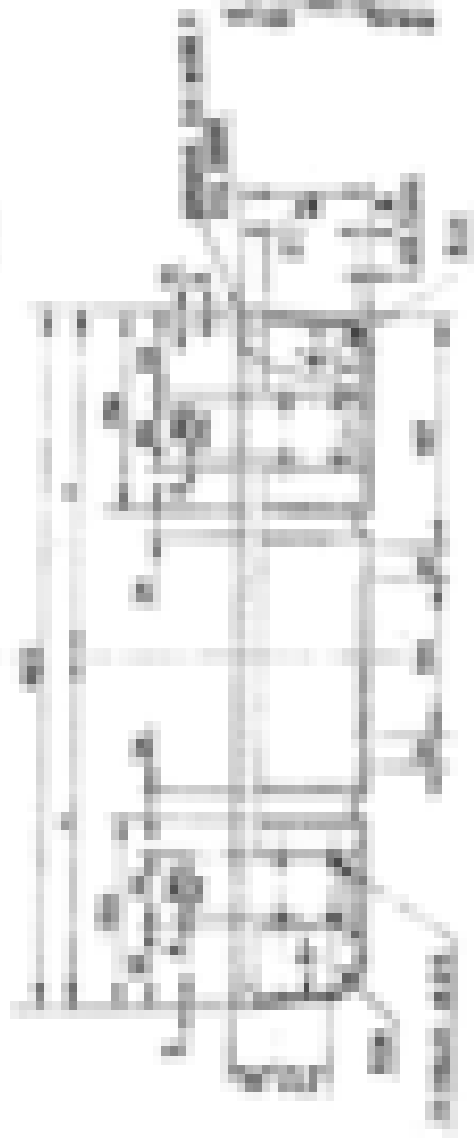
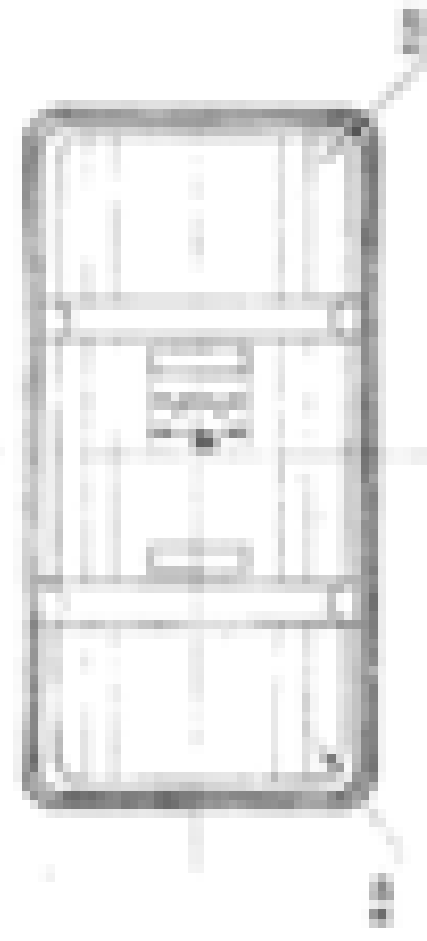
NO.	DATE	REVISION

PROJECT: [REDACTED]  
 CLIENT: [REDACTED]  
 ARCHITECT: [REDACTED]

NO.	DATE	REVISION



**FAST-ROCK**



NOTE: THIS CABINET IS DESIGNED TO BE USED WITH THE FAST-ROCK SYSTEM. IT IS NOT TO BE USED AS A STORAGE CABINET FOR OTHER EQUIPMENT.

FAST-ROCK SYSTEM

FAST-ROCK SYSTEM - MODEL NO. FR-1000 - 1000 LBS. CAPACITY

FR-1000







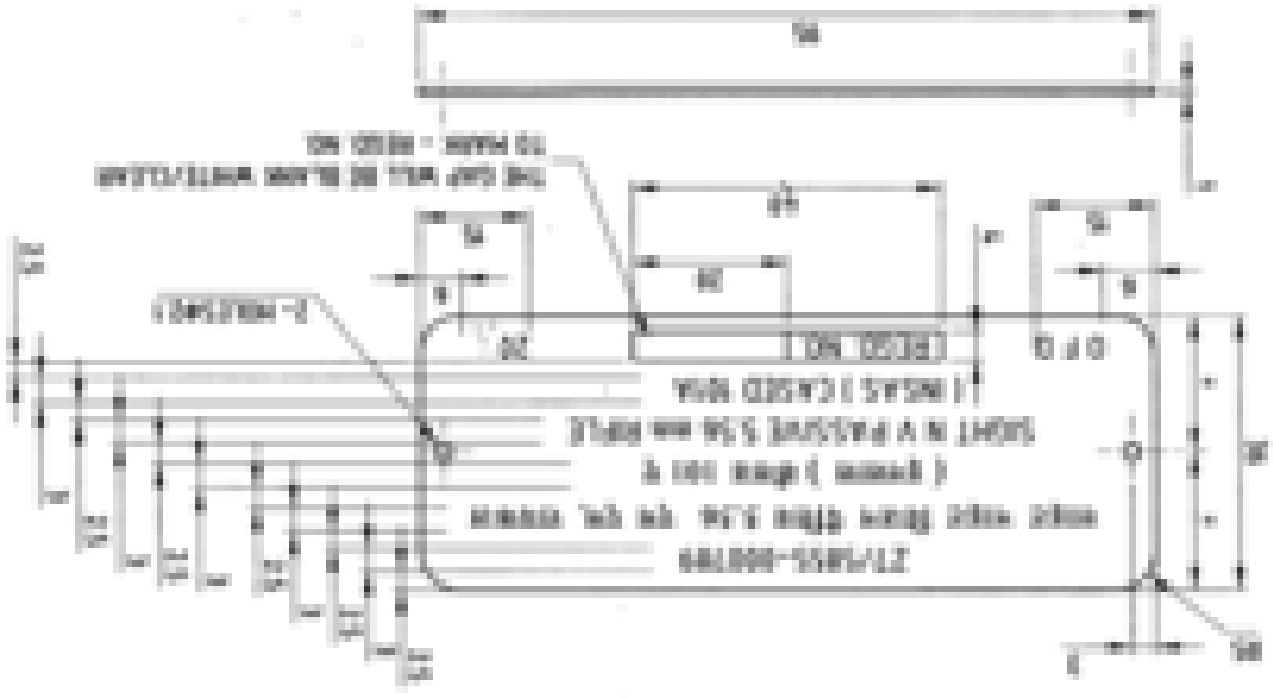
# ORDNANCE FACTORY, DEHRADUN

DRAWING NO. <b>MCT-25484</b>		APPROVED	DRAWN	DATE
SHEETS - 1		DR -		
AS ABOVE		TR -		
TITLE		DR - P.C. SIGN		
SCALE - 1:1		DT - 10-10-1970		

NOTE :-  
LETTERS & FIGURES ARE TO BE PRINTED IN BLACK  
ON APPROVED AT PLATE

FALL :-  
AL. ALLOT. FROM M-15, 101-100

GROUP :-  
APPROVED AT DRAWING



**MCT-25484**

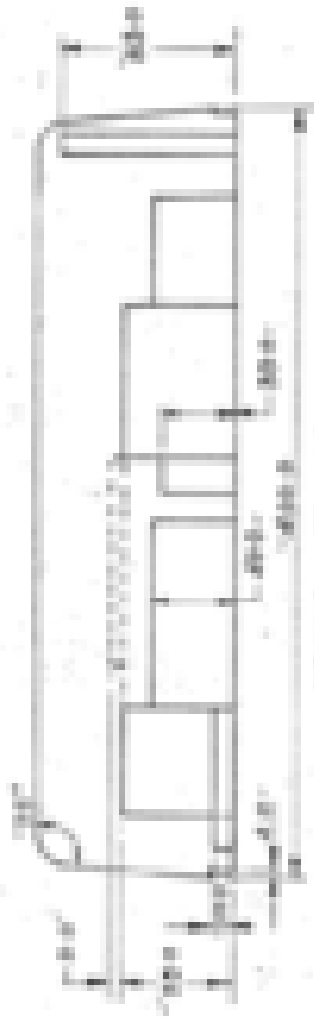


INDICATED FROM CASE

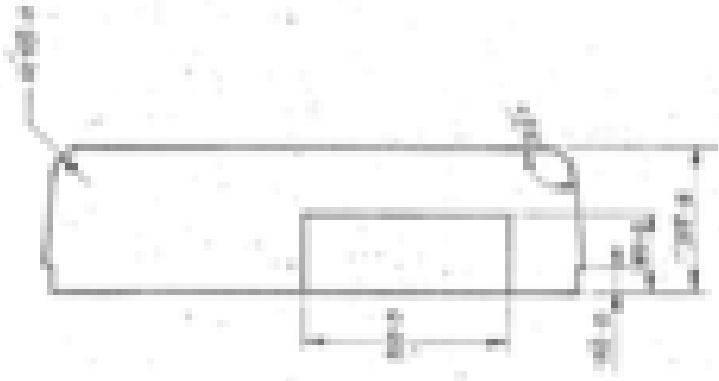
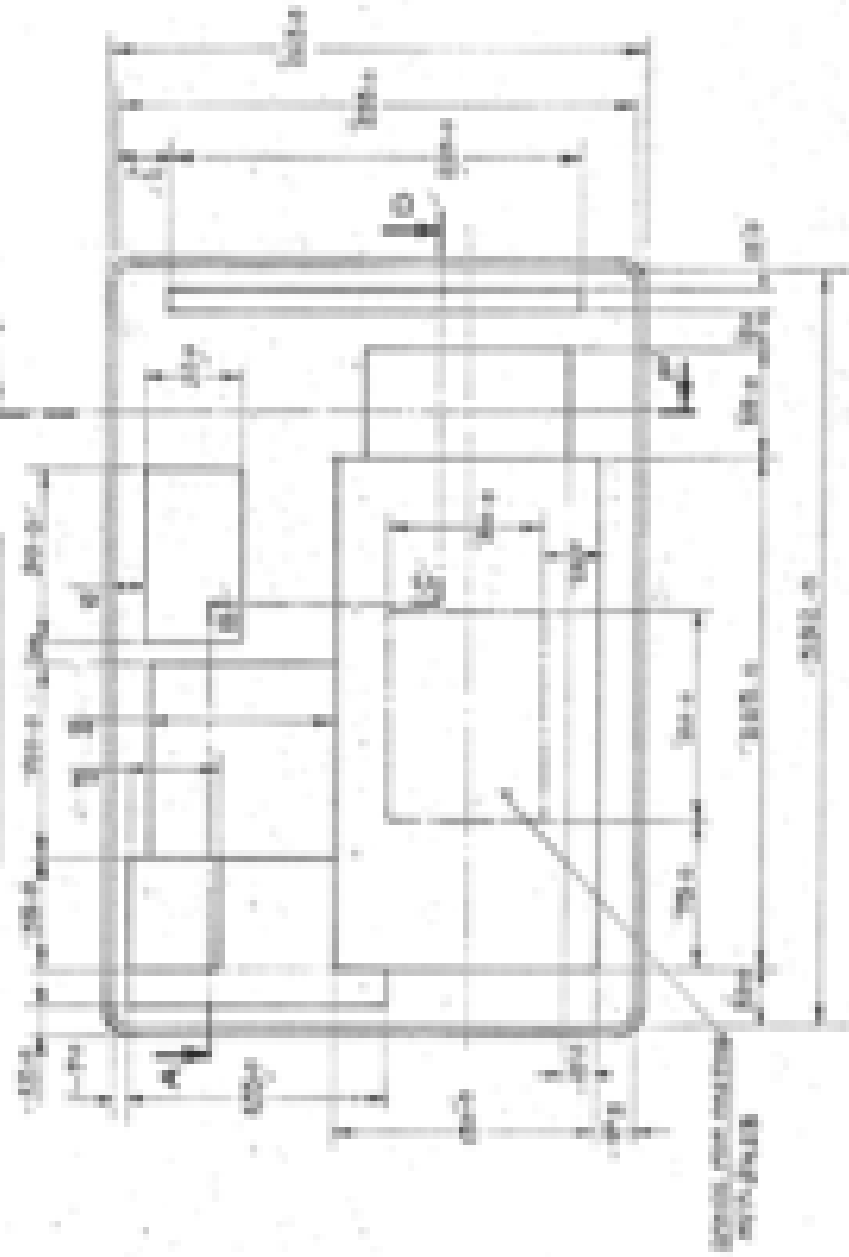
SHEET 1 OF 1

DATE: 10-10-1970

SIGHT NIGHT VISION PASSIVE 5.5mm. RIFLE (MSAS) CASSED 101A



SECTION AT A-A



SECTION AT B-B

FOR REVISIONS REFERENCED FROM DRAWING SEE THE REVISION SHEET

PROJECT

DATE

BY

NO.

REV.

DATE

APP.

DATE

DESIGNED BY

DATE

CHECKED BY

DATE

APPROVED BY

DATE

PROJECT NO.

DATE

CASE CARRYING FRP OF PMS FOR 84 mm

CARL GUSTAF GUN

FOAM PACKING INSERT

PROJECT NO.

DATE

APPROVAL

DATE

BY

APPROVED

NAME

DESIGNATION

DATE

NAME

DESIGNATION

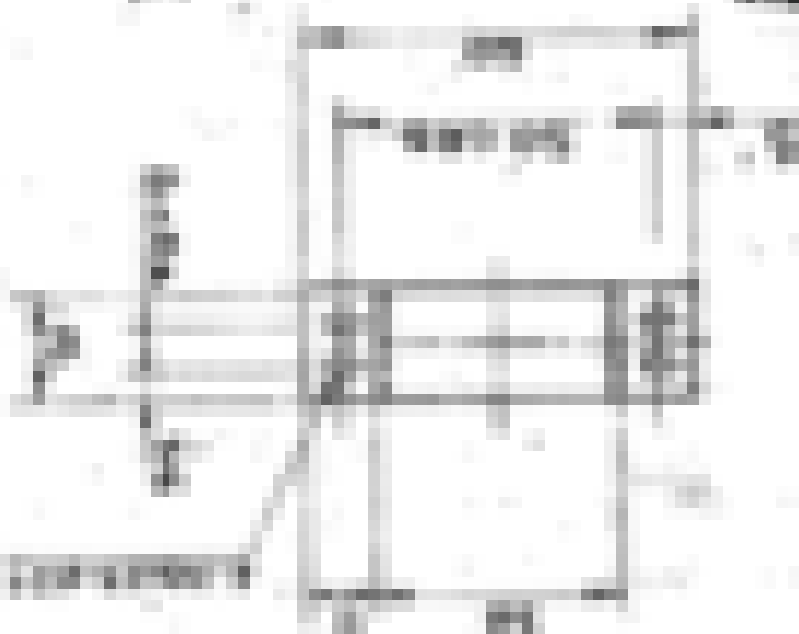
APPROVED FOR THE BOARD OF DIRECTORS

DATE

APPROVED FOR THE BOARD OF DIRECTORS

APPROVED FOR THE BOARD OF DIRECTORS

DATE



APPROVAL

APPROVED FOR THE BOARD OF DIRECTORS

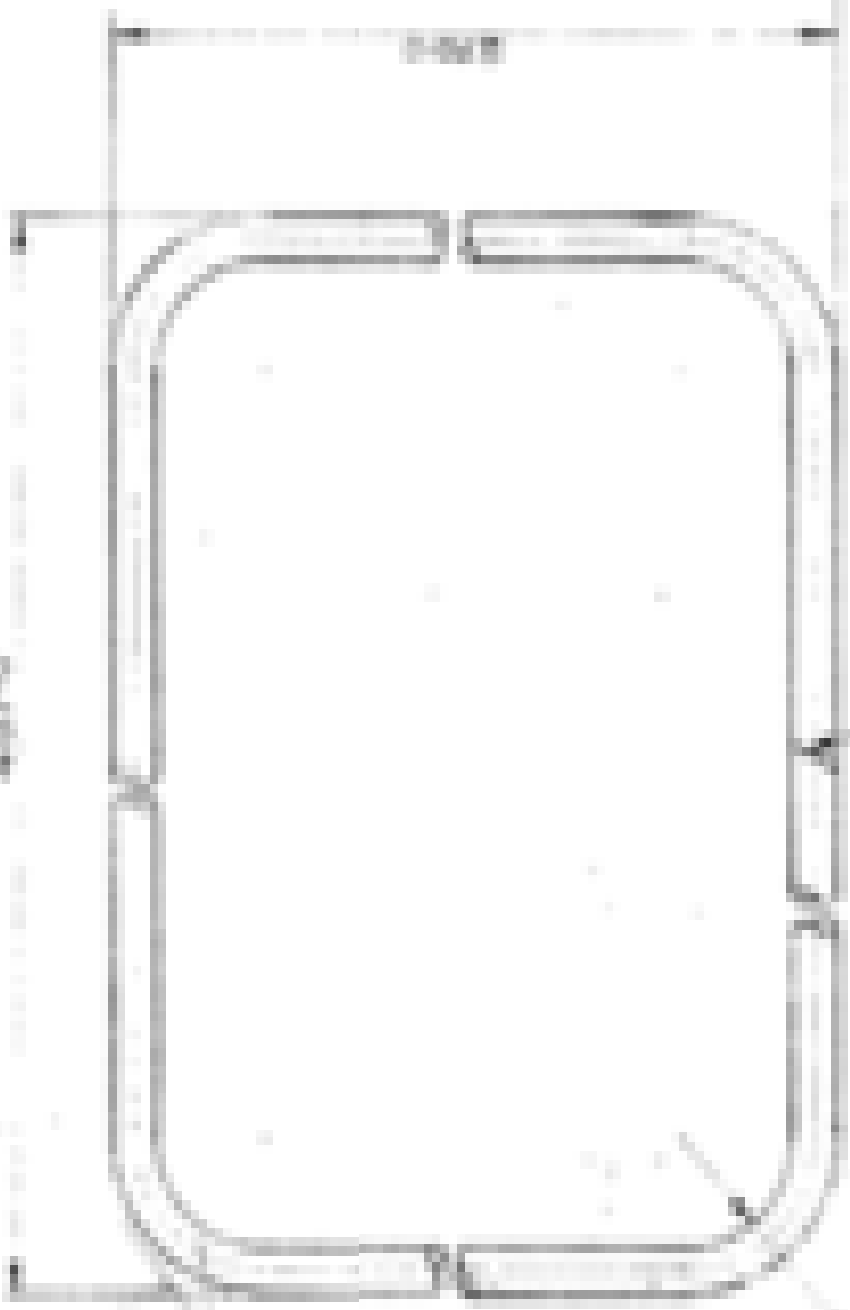
DATE

APPROVED FOR THE BOARD OF DIRECTORS

APPROVED FOR THE BOARD OF DIRECTORS



4-07-0



100mm - 0.001mm J.B. 0.001mm

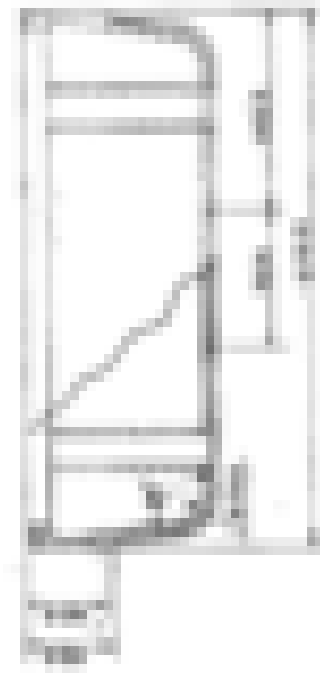
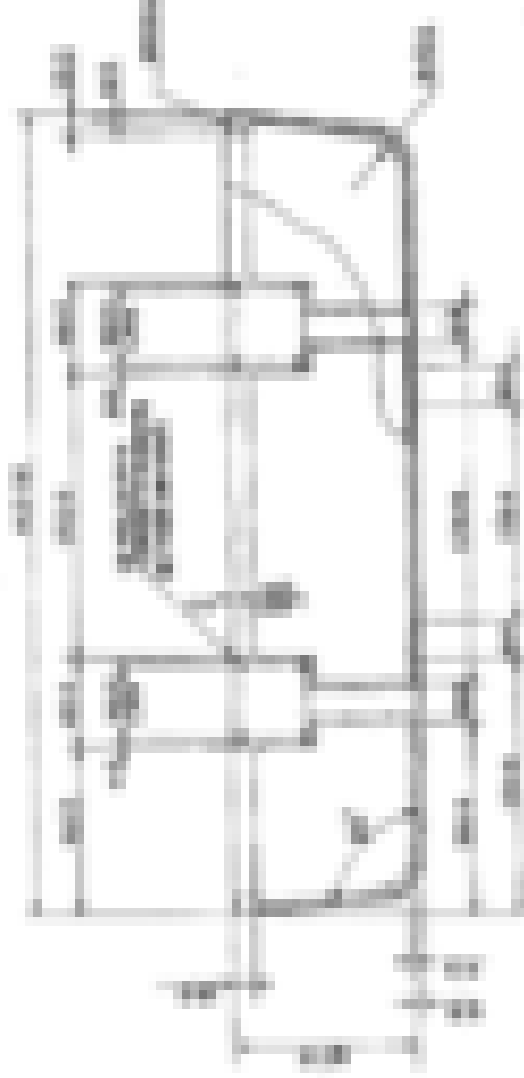
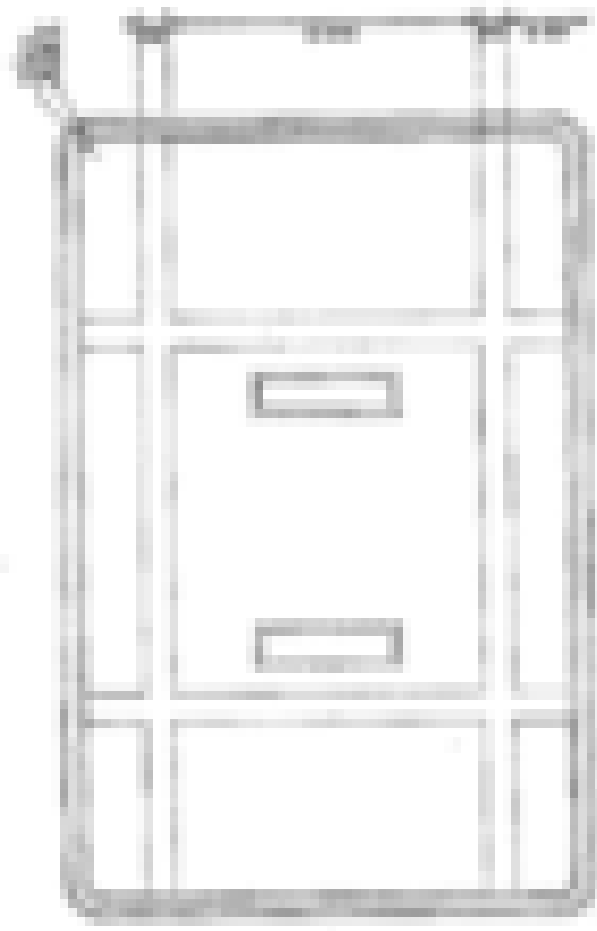
100mm - 0.001mm

Starting at the drawing  
internal block,  
also complete from all

Order - 0.001mm

<p>Part Name</p> <p>Part No.</p> <p>Part Desc.</p>	<p>Order - 0.001mm</p> <p>Order - 0.001mm</p>	<p>Order - 0.001mm</p> <p>Order - 0.001mm</p>	<p>Order - 0.001mm</p> <p>Order - 0.001mm</p>
<p>Part Name</p> <p>Part No.</p> <p>Part Desc.</p>	<p>Order - 0.001mm</p> <p>Order - 0.001mm</p>	<p>Order - 0.001mm</p> <p>Order - 0.001mm</p>	<p>Order - 0.001mm</p> <p>Order - 0.001mm</p>





NOTE: THIS DRAWING IS FOR INFORMATION ONLY.  
 IT IS NOT TO BE USED FOR CONSTRUCTION.

DATE: 10/10/2023  
 DRAWN BY: [Name]  
 CHECKED BY: [Name]

NO.	REV.	DATE	DESCRIPTION
1	0	10/10/2023	ISSUED FOR INFORMATION

PROJECT NO.	1000000000
PROJECT NAME	PROJECT NAME
DATE	10/10/2023

SCALE	1:1
UNIT	MM



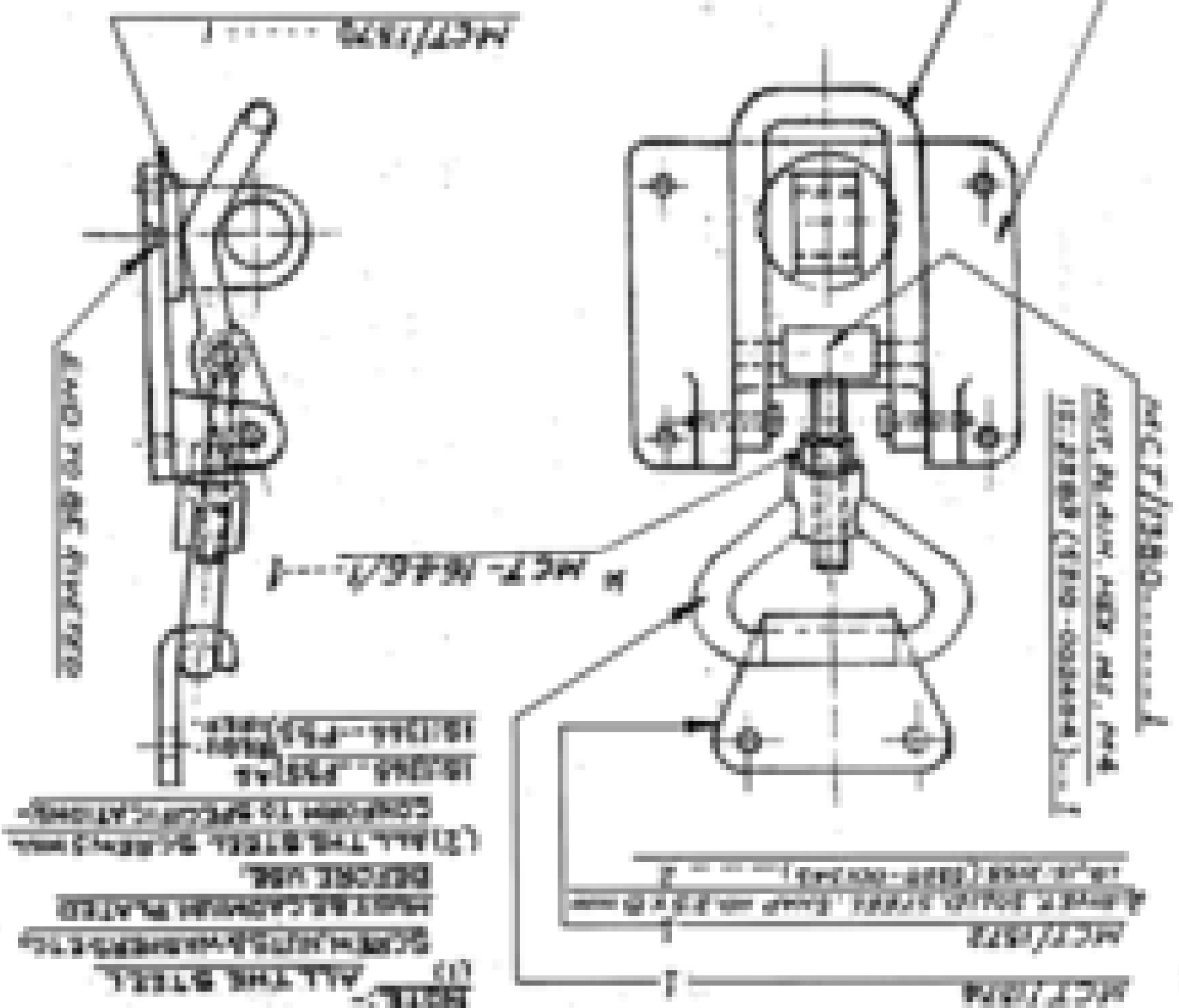
CRP. F.V. D. PLAN

CASE CARRYING FRP OF PNS FOR B4

CARL GUSTAV GUN

EASTNER SET TURN LOCK (ASSY)

FORM NO. 528



NOTE: ALL THE STEEL COMPONENTS SHALL BE OILED BEFORE USE.

SECTION A-A

SECTION B-B

SECTION C-C

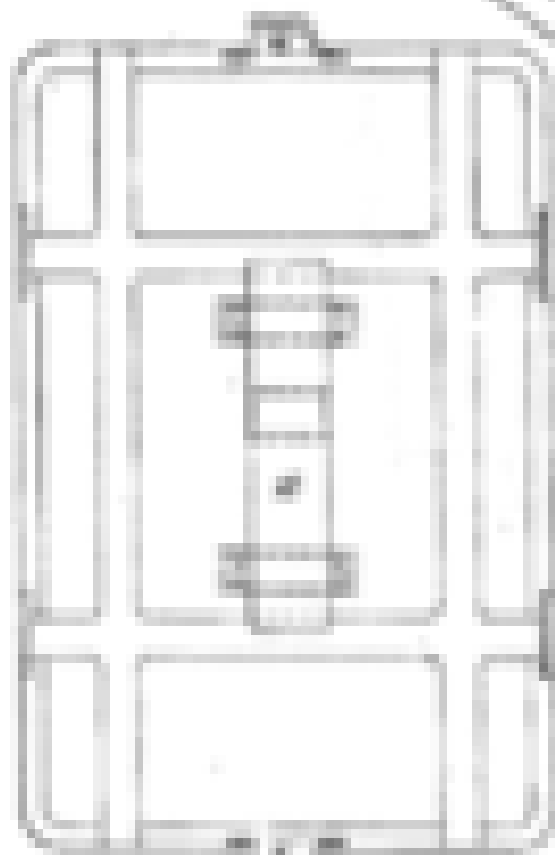
IT SHOULD BE KEPT CLEAN AND OILED REGULARLY.

SECTION A-A

SECTION B-B

SECTION C-C

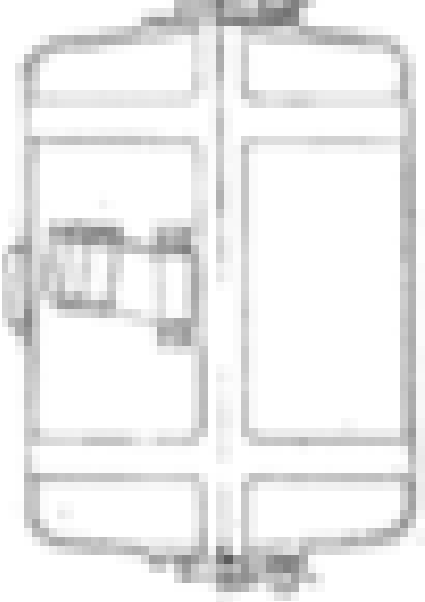
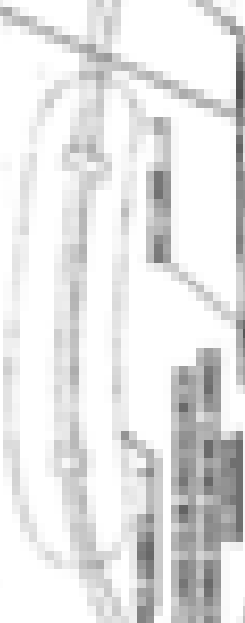
REV. NO.	DATE	BY	APPROVED
01	15-11-2011	...	...
02	...	...	...
03	...	...	...



1. THIS DRAWING IS THE PROPERTY OF THE COMPANY AND IS NOT TO BE REPRODUCED OR TRANSMITTED IN ANY FORM OR BY ANY MEANS, ELECTRONIC OR MECHANICAL, INCLUDING PHOTOCOPYING, RECORDING, OR BY ANY INFORMATION STORAGE AND RETRIEVAL SYSTEM.

2. THIS DRAWING IS THE PROPERTY OF THE COMPANY AND IS NOT TO BE REPRODUCED OR TRANSMITTED IN ANY FORM OR BY ANY MEANS, ELECTRONIC OR MECHANICAL, INCLUDING PHOTOCOPYING, RECORDING, OR BY ANY INFORMATION STORAGE AND RETRIEVAL SYSTEM.

3. THIS DRAWING IS THE PROPERTY OF THE COMPANY AND IS NOT TO BE REPRODUCED OR TRANSMITTED IN ANY FORM OR BY ANY MEANS, ELECTRONIC OR MECHANICAL, INCLUDING PHOTOCOPYING, RECORDING, OR BY ANY INFORMATION STORAGE AND RETRIEVAL SYSTEM.



4. THIS DRAWING IS THE PROPERTY OF THE COMPANY AND IS NOT TO BE REPRODUCED OR TRANSMITTED IN ANY FORM OR BY ANY MEANS, ELECTRONIC OR MECHANICAL, INCLUDING PHOTOCOPYING, RECORDING, OR BY ANY INFORMATION STORAGE AND RETRIEVAL SYSTEM.

5. THIS DRAWING IS THE PROPERTY OF THE COMPANY AND IS NOT TO BE REPRODUCED OR TRANSMITTED IN ANY FORM OR BY ANY MEANS, ELECTRONIC OR MECHANICAL, INCLUDING PHOTOCOPYING, RECORDING, OR BY ANY INFORMATION STORAGE AND RETRIEVAL SYSTEM.

NO.	REV.	DATE	BY	CHKD.	APP.
1					
2					
3					
4					
5					

DATE DRAWING IS A PART OF THE DRAWING FOR THE CUSTOMER'S USE

APPROVED

DATE

BY

CHKD.

APP.

SCALE

UNIT

PROJECT

DRAWING NO.

REV.

DATE

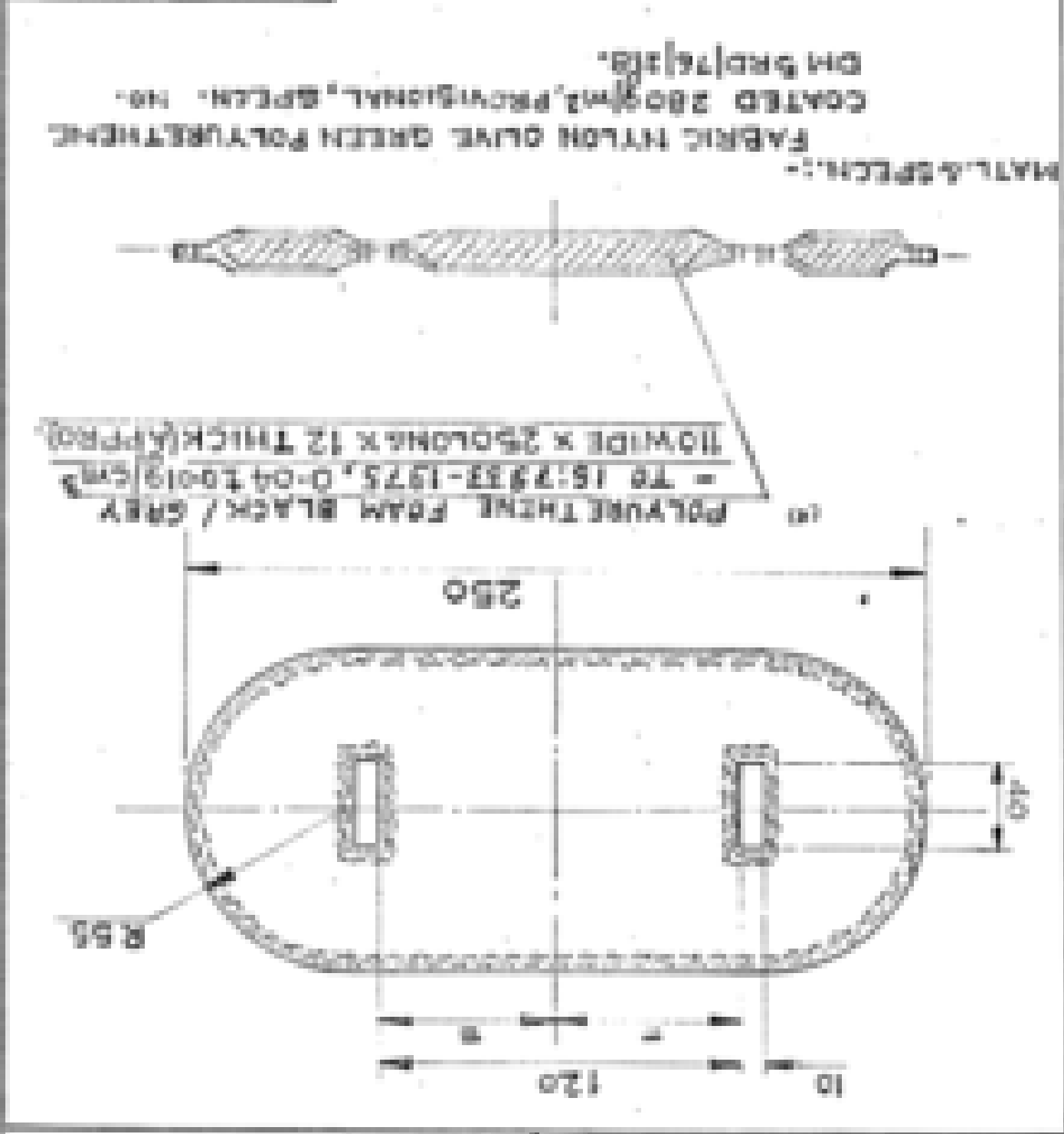
BY

CHKD.

APP.


# आयुध निर्माणी देहादन

प्र. क्र. 1629/7 SHOULDER PAD.	ड्राइंग शीट	मॉडेल नं. 1629/7 प्र. क्र. 1629/7	ऑर्डर नं. 1629/7 प्र. क्र. 1629/7	माला/सप्लाय प्र. क्र. 1629/7
-----------------------------------	----------------	--------------------------------------	--------------------------------------	---------------------------------



प्र. क्र. 1629/7 SHOULDER PAD.	ड्राइंग शीट
-----------------------------------	----------------

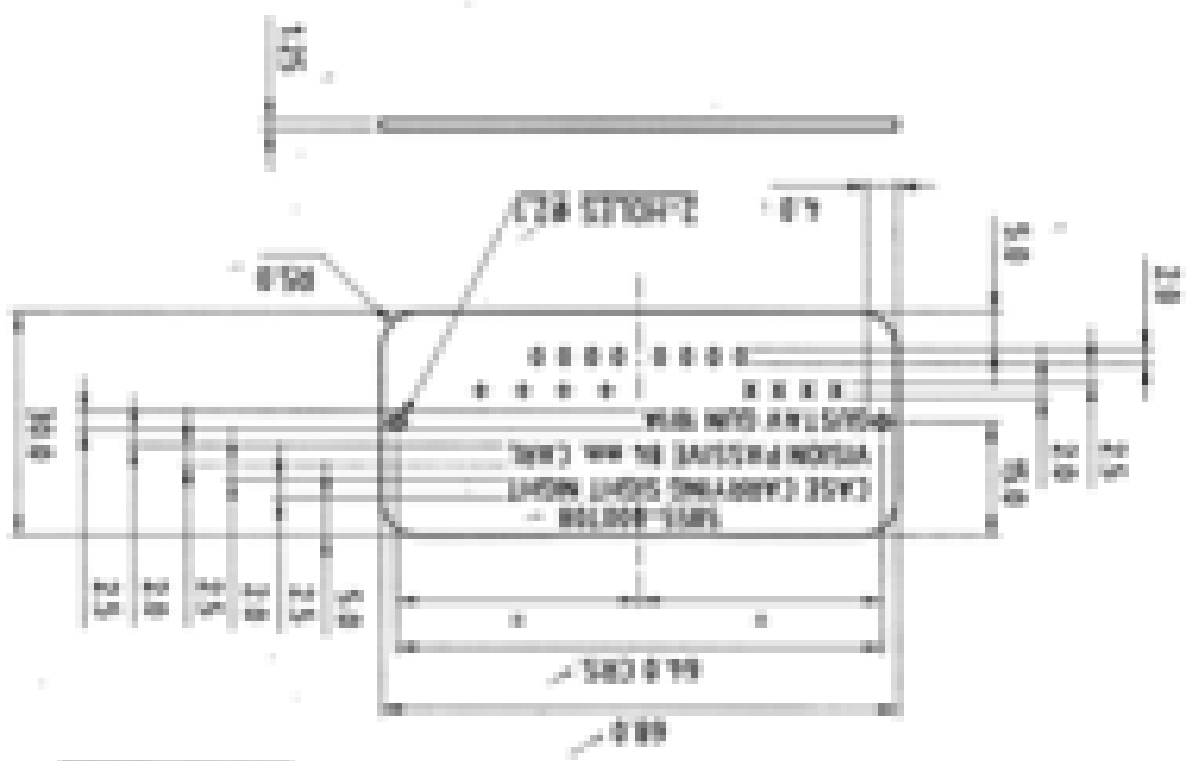


DRAWING No. :- <b>MCT-2421</b>			DATE/NO. OF SHEETS
DRAWING No. :-			REVISIONS
DATE: 11/11/2008	SHEET NO. - 1	CH - 44	
SCALE - 1:1	DATE: 11/11/2008	BY - M. K. SHARMA	

NO CHANGE TO BE MADE IN THIS DRAWING  
 (REVISIONS) (REVISIONS) (REVISIONS)  
 THE NEW DIMENSIONS ARE

**NOTE -**  
 LETTERS & FIGURES TO BE PRINTED BLACK ON APPROVED  
 ALUMINUM SHEET ELECTRICALLY  
 MANUFACTURED METAL  
 X X X X  
 REJECTED IN  
 YEAR OF SUPPLY  
 O O O O

**SCALE - 1:1**  
 IN DIMENSIONS - ALL DIMENSIONS IN MILLIMETERS



† **MCT-2421**

**CASE CARRYING S.N.V.P. 84 mm CARL GUSTAV GUN 101A**  
**PLATE IDENTIFICATION**  
 ORN. No. - **805-20113**

