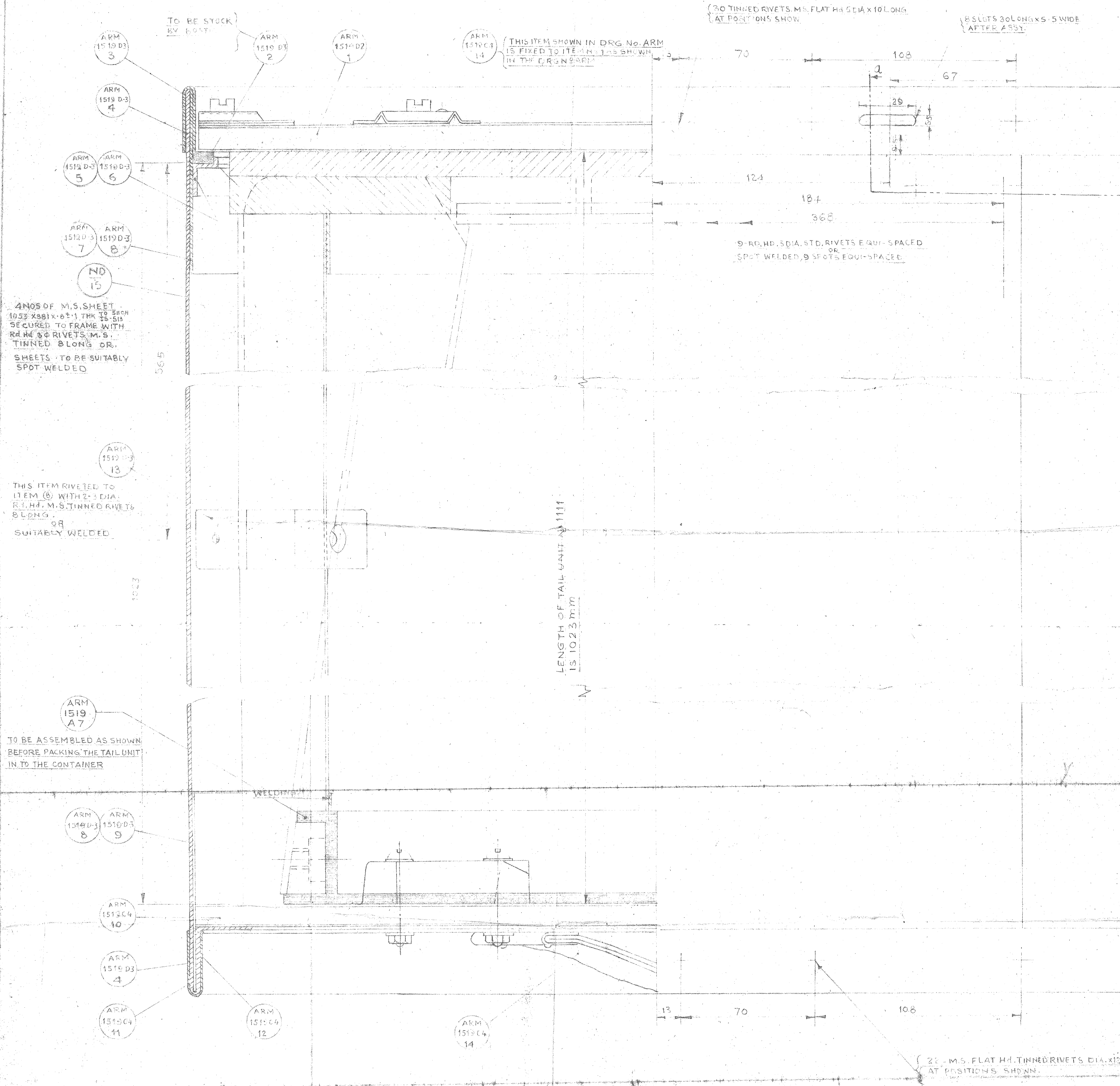
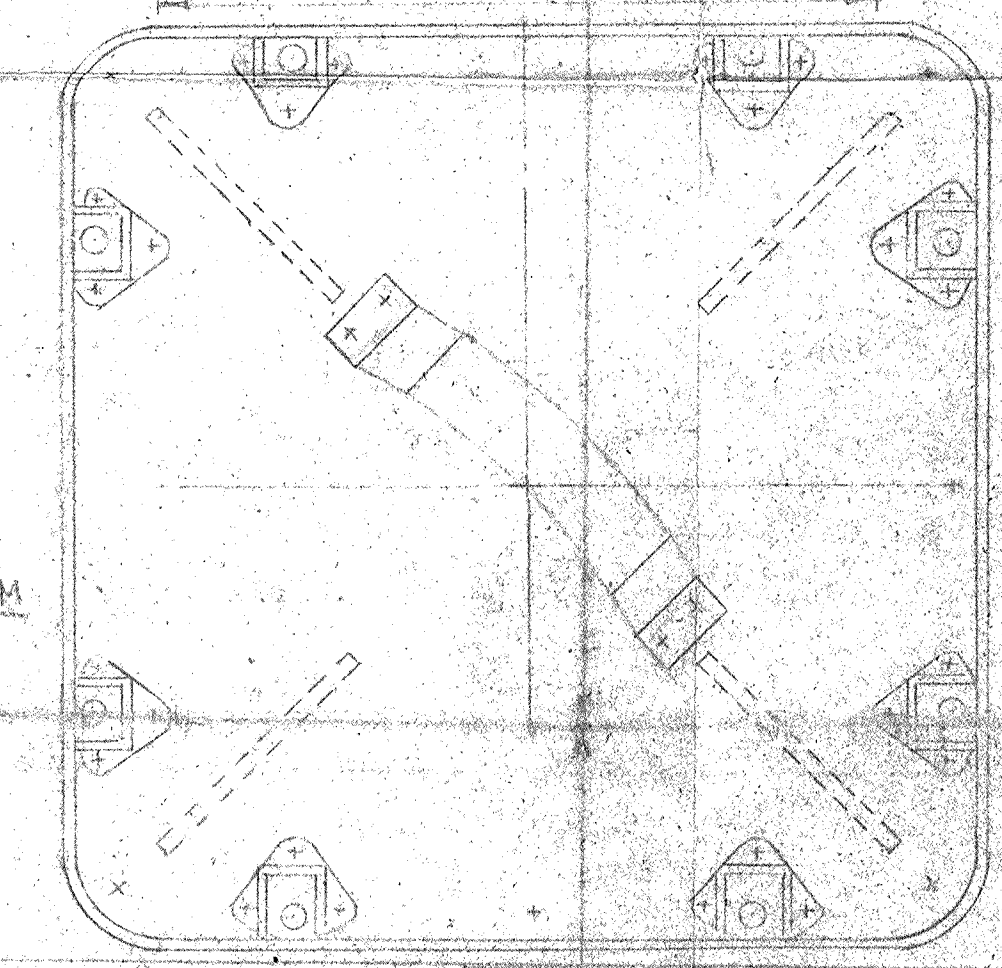
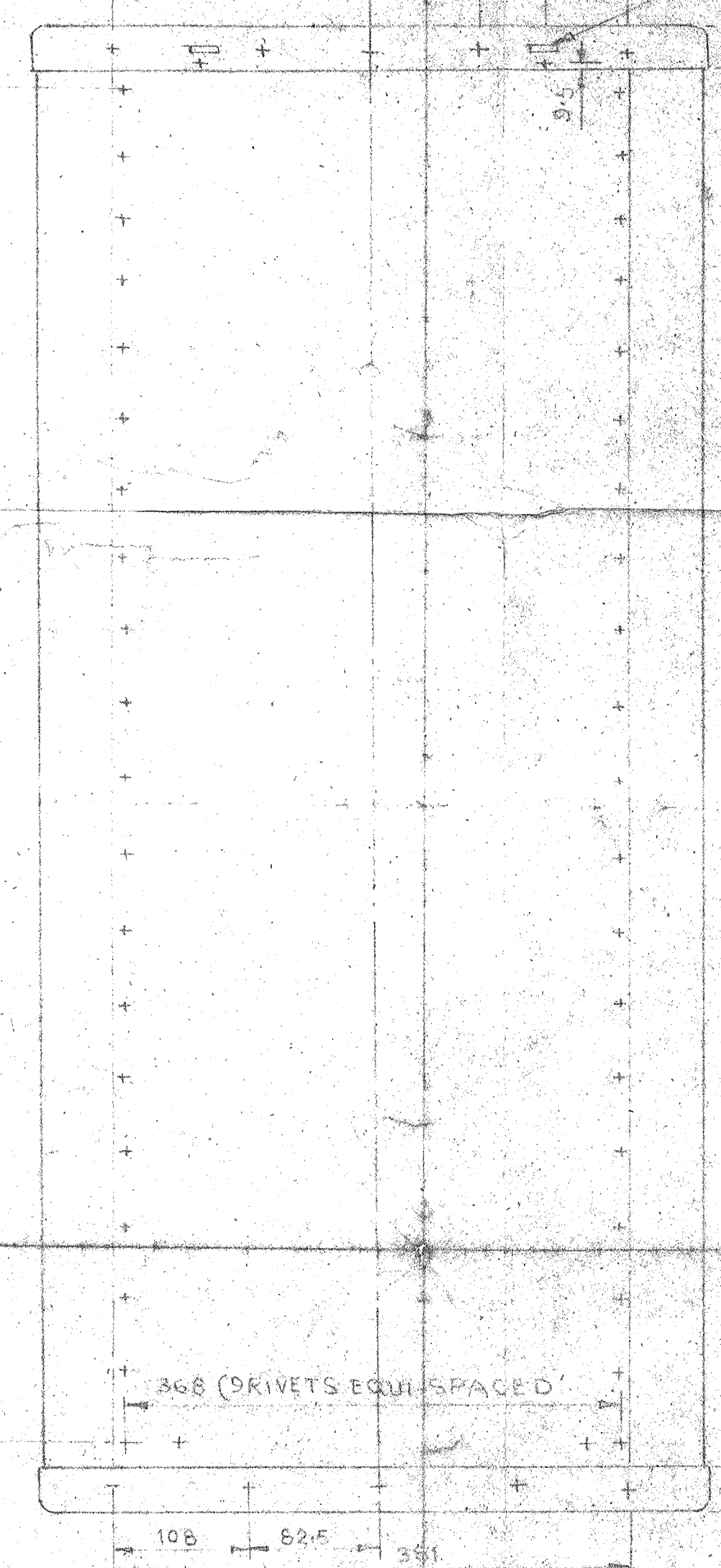
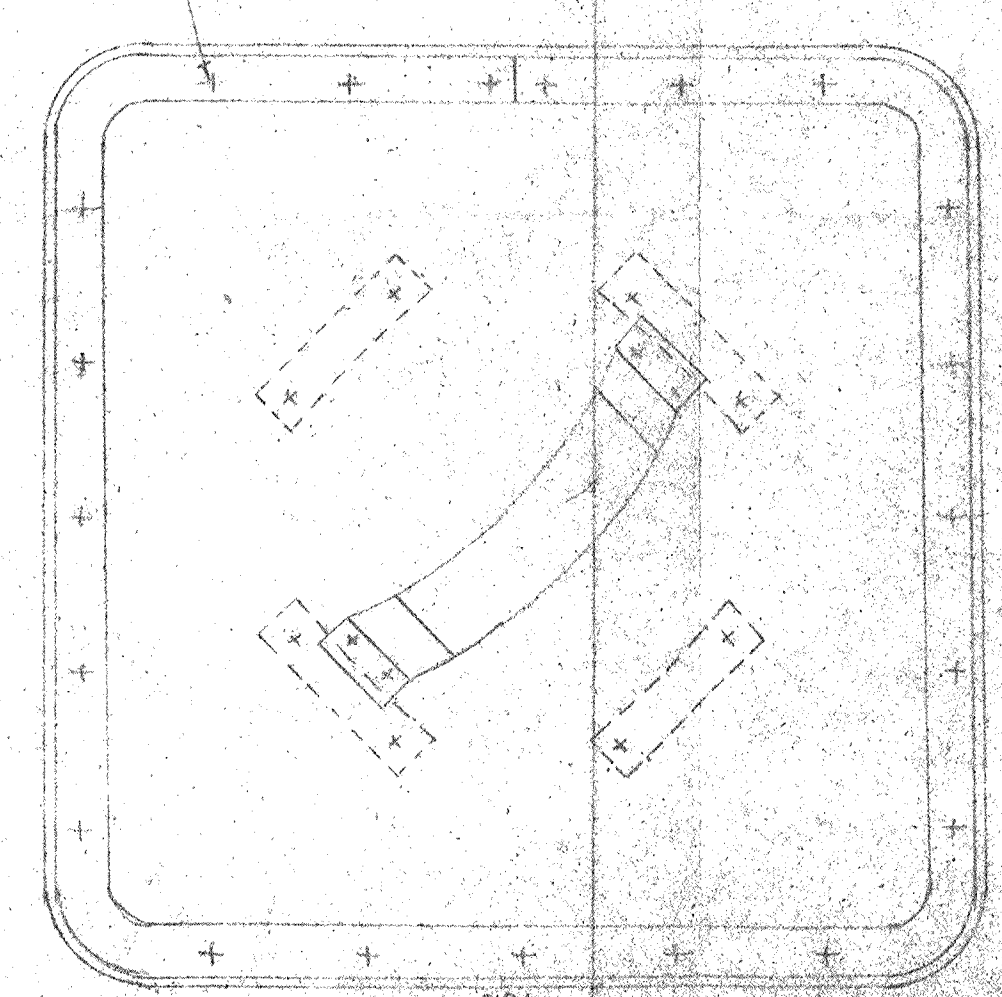
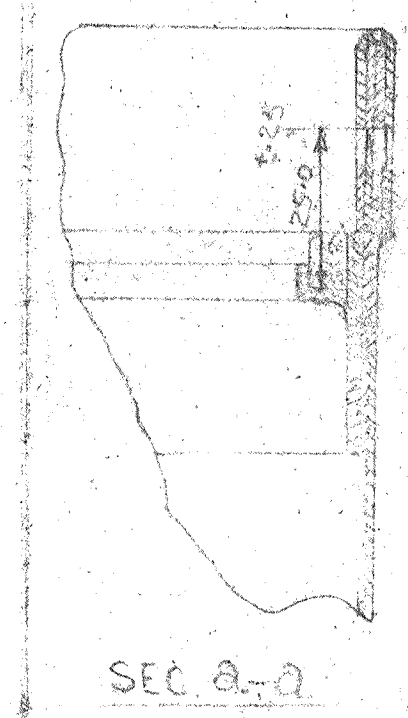


(30 TINNED RIVETS, M.S. FLAT HD 5 DIA X 10 LONG AT POSITIONS SHOWN)
 (8 SLOTS 30 LONG X 5 WIDE AFTER ASSY)

(THIS ITEM SHOWN IN DRG No. ARM 1519 C4 IS FIXED TO ITEM 13 AS SHOWN IN THE FIGURE PART)



FUNCTIONAL TEST:-
 1. DROP TEST
 2. JOLT TEST
 TO BE CARRIED OUT AS PER SPECN. IA-1169

GENERAL NOTE

1. STRAPS ITEM 10 SHOULD BE PARALLEL AND IN ONE DIRECTION DURING ASSEMBLY
2. M.S. SHEET FOR BODY ASSEMBLY CAN BE BETWEEN 8.1 THK
3. ITEM 11 TOP LID & ITEM 10 BOTTOM LID SHOULD BE PARALLEL AND SHOULD BE PERPENDICULAR TO THE SIDE OF THE BODY
4. APPLY JOINTING COMPOSITION SPECN. ID 348 WHERE METAL PARTS ARE JOINED BY RIVETING
5. APPLY SPOT WELDING PRIMER SPECN. CT 314 ON JOINTS PRIOR TO SPOT WELDING
6. RUBBER BLOCK OF NEOPRENE RUBBER TO SPECN. IND/ME/884 CLASS C3 TO BE STICKED ON LD BY APPROVED ADHESIVE (ARALDITE)

MATERIAL: RIVET - STANDARD ITEM

GENERAL ARRANGEMENT

DRAWN BY
 D. B. DRAWING OFFICE

CHECKED
 TRACED

CHECKED
 PASSED

APPROVED

TITLE:-

CONTAINER (FOR TAIL UNIT NO. 1111)

DIMENSIONS IN MM.

DATE ISSUED: _____

ALTERNATION: _____

MATERIAL	AS ON DRG.	FINISH	SELF
PARS/CRE/NR			ASSEMBLY DRG. NR
PART NR			
SCHEDULE NR	ARM 1519 SCHEDULE		
FILE NR			

1	22-11-58	4	DRG AMENDED VIDE AL. NO. 26/2008
2	18-03-59	5	DRG AMENDED VIDE AL. NO. 03/2008
3	18-06-59	7	DRG AMENDED VIDE AL. NO. 9/2008
4	05-05-60	1	ORIGINAL ISSUE

SCALE: MOD. DATE: _____

DRG. NO. **ARM 1519 D1**

SHEET NO. _____ NO. OF SHEETS _____