

Module = 5
 Number of teeth = 16
 P.C.D. = 810
 Pressure angle = 20°

A.T. MATL.-1
 B.S. 970 Pt-1, 1983, GR. B35 M30.
 HEAT TREATED TO ACHIEVE THE FOLLOWING PROPERTIES:
 TENSILE STRENGTH - 1100 N/MM² MIN.
 YIELD STRENGTH - 800 N/MM² MIN.
 ELONGATION IN 5-GAUGE LENGTH - 5-6% (S.D)
 HARDNESS - HB 300-380

SURFACE TREATMENT TO SPEC 1001

57

To be hardened and tempered as per drawing

Sl. No.	Part No.	Part Name	Qty	Material	Remarks
1	407111	Geck	375	HT25	
2	41508	Lock	1	HT25	
3	41509	Lock	1	HT25	
4	41510	Lock	1	HT25	
5	41511	Lock	1	HT25	
6	41512	Lock	1	HT25	
7	41513	Lock	1	HT25	
8	41514	Lock	1	HT25	
9	41515	Lock	1	HT25	
10	41516	Lock	1	HT25	
11	41517	Lock	1	HT25	
12	41518	Lock	1	HT25	
13	41519	Lock	1	HT25	
14	41520	Lock	1	HT25	
15	41521	Lock	1	HT25	
16	41522	Lock	1	HT25	
17	41523	Lock	1	HT25	
18	41524	Lock	1	HT25	
19	41525	Lock	1	HT25	
20	41526	Lock	1	HT25	
21	41527	Lock	1	HT25	
22	41528	Lock	1	HT25	
23	41529	Lock	1	HT25	
24	41530	Lock	1	HT25	
25	41531	Lock	1	HT25	
26	41532	Lock	1	HT25	
27	41533	Lock	1	HT25	
28	41534	Lock	1	HT25	
29	41535	Lock	1	HT25	
30	41536	Lock	1	HT25	
31	41537	Lock	1	HT25	
32	41538	Lock	1	HT25	
33	41539	Lock	1	HT25	
34	41540	Lock	1	HT25	
35	41541	Lock	1	HT25	
36	41542	Lock	1	HT25	
37	41543	Lock	1	HT25	
38	41544	Lock	1	HT25	
39	41545	Lock	1	HT25	
40	41546	Lock	1	HT25	
41	41547	Lock	1	HT25	
42	41548	Lock	1	HT25	
43	41549	Lock	1	HT25	
44	41550	Lock	1	HT25	
45	41551	Lock	1	HT25	
46	41552	Lock	1	HT25	
47	41553	Lock	1	HT25	
48	41554	Lock	1	HT25	
49	41555	Lock	1	HT25	
50	41556	Lock	1	HT25	
51	41557	Lock	1	HT25	
52	41558	Lock	1	HT25	
53	41559	Lock	1	HT25	
54	41560	Lock	1	HT25	
55	41561	Lock	1	HT25	
56	41562	Lock	1	HT25	
57	41563	Lock	1	HT25	
58	41564	Lock	1	HT25	
59	41565	Lock	1	HT25	
60	41566	Lock	1	HT25	
61	41567	Lock	1	HT25	
62	41568	Lock	1	HT25	
63	41569	Lock	1	HT25	
64	41570	Lock	1	HT25	
65	41571	Lock	1	HT25	
66	41572	Lock	1	HT25	
67	41573	Lock	1	HT25	
68	41574	Lock	1	HT25	
69	41575	Lock	1	HT25	
70	41576	Lock	1	HT25	
71	41577	Lock	1	HT25	
72	41578	Lock	1	HT25	
73	41579	Lock	1	HT25	
74	41580	Lock	1	HT25	
75	41581	Lock	1	HT25	
76	41582	Lock	1	HT25	
77	41583	Lock	1	HT25	
78	41584	Lock	1	HT25	
79	41585	Lock	1	HT25	
80	41586	Lock	1	HT25	
81	41587	Lock	1	HT25	
82	41588	Lock	1	HT25	
83	41589	Lock	1	HT25	
84	41590	Lock	1	HT25	
85	41591	Lock	1	HT25	
86	41592	Lock	1	HT25	
87	41593	Lock	1	HT25	
88	41594	Lock	1	HT25	
89	41595	Lock	1	HT25	
90	41596	Lock	1	HT25	
91	41597	Lock	1	HT25	
92	41598	Lock	1	HT25	
93	41599	Lock	1	HT25	
94	41600	Lock	1	HT25	
95	41601	Lock	1	HT25	
96	41602	Lock	1	HT25	
97	41603	Lock	1	HT25	
98	41604	Lock	1	HT25	
99	41605	Lock	1	HT25	
100	41606	Lock	1	HT25	

1983-V
 2-3-04

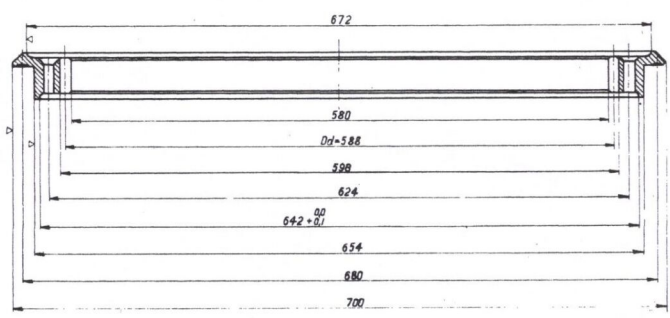
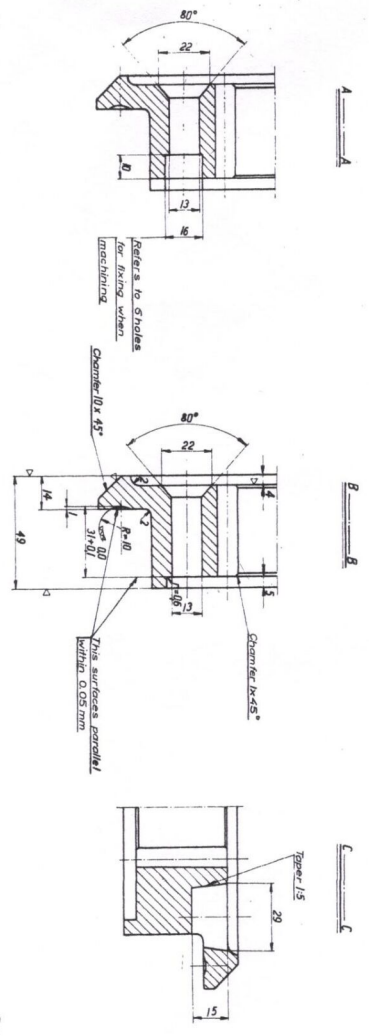
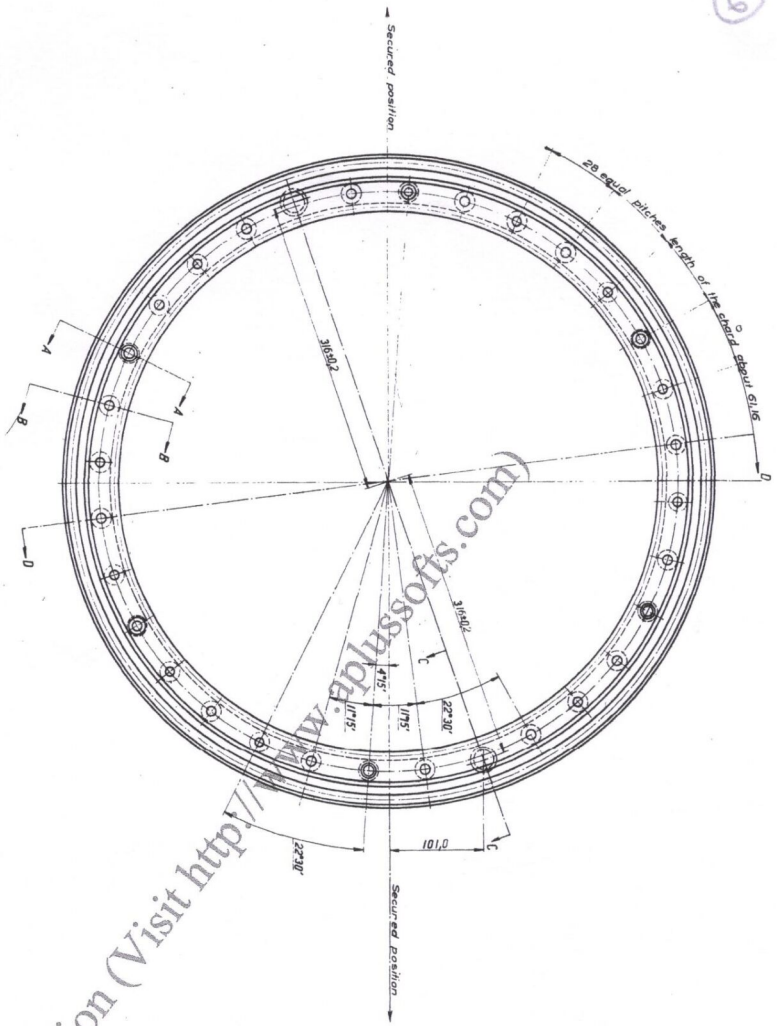
MINDI KOREN ABBEY

10/1

AKTIERI... 3013787

Sl. No.	Part No.	Part Name	Qty	Material	Remarks
1	41596	Lock	1	HT25	
2	41597	Lock	1	HT25	
3	41598	Lock	1	HT25	
4	41599	Lock	1	HT25	
5	41600	Lock	1	HT25	
6	41601	Lock	1	HT25	
7	41602	Lock	1	HT25	
8	41603	Lock	1	HT25	
9	41604	Lock	1	HT25	
10	41605	Lock	1	HT25	
11	41606	Lock	1	HT25	
12	41607	Lock	1	HT25	
13	41608	Lock	1	HT25	
14	41609	Lock	1	HT25	
15	41610	Lock	1	HT25	
16	41611	Lock	1	HT25	
17	41612	Lock	1	HT25	
18	41613	Lock	1	HT25	
19	41614	Lock	1	HT25	
20	41615	Lock	1	HT25	
21	41616	Lock	1	HT25	
22	41617	Lock	1	HT25	
23	41618	Lock	1	HT25	
24	41619	Lock	1	HT25	
25	41620	Lock	1	HT25	
26	41621	Lock	1	HT25	
27	41622	Lock	1	HT25	
28	41623	Lock	1	HT25	
29	41624	Lock	1	HT25	
30	41625	Lock	1	HT25	
31	41626	Lock	1	HT25	
32	41627	Lock	1	HT25	
33	41628	Lock	1	HT25	
34	41629	Lock	1	HT25	
35	41630	Lock	1	HT25	
36	41631	Lock	1	HT25	
37	41632	Lock	1	HT25	
38	41633	Lock	1	HT25	
39	41634	Lock	1	HT25	
40	41635	Lock	1	HT25	
41	41636	Lock	1	HT25	
42	41637	Lock	1	HT25	
43	41638	Lock	1	HT25	
44	41639	Lock	1	HT25	
45	41640	Lock	1	HT25	
46	41641	Lock	1	HT25	
47	41642	Lock	1	HT25	
48	41643	Lock	1	HT25	
49	41644	Lock	1	HT25	
50	41645	Lock	1	HT25	
51	41646	Lock	1	HT25	
52	41647	Lock	1	HT25	
53	41648	Lock	1	HT25	
54	41649	Lock	1	HT25	
55	41650	Lock	1	HT25	
56	41651	Lock	1	HT25	
57	41652	Lock	1	HT25	
58	41653	Lock	1	HT25	
59	41654	Lock	1	HT25	
60	41655	Lock	1	HT25	
61	41656	Lock	1	HT25	
62	41657	Lock	1	HT25	
63	41658	Lock	1	HT25	
64	41659	Lock	1	HT25	
65	41660	Lock	1	HT25	
66	41661	Lock	1	HT25	
67	41662	Lock	1	HT25	
68	41663	Lock	1	HT25	
69	41664	Lock	1	HT25	
70	41665	Lock	1	HT25	
71	41666	Lock	1	HT25	
72	41667	Lock	1	HT25	
73	41668	Lock	1	HT25	
74	41669	Lock	1	HT25	
75	41670	Lock	1	HT25	
76	41671	Lock	1	HT25	
77	41672	Lock	1	HT25	
78	41673	Lock	1	HT25	
79	41674	Lock	1	HT25	
80	41675	Lock	1	HT25	
81	41676	Lock	1	HT25	
82	41677	Lock	1	HT25	
83	41678	Lock	1	HT25	
84	41679	Lock	1	HT25	
85	41680	Lock	1	HT25	
86	41681	Lock	1	HT25	
87	41682	Lock	1	HT25	
88	41683	Lock	1	HT25	
89	41684	Lock	1	HT25	
90	41685	Lock	1	HT25	
91	41686	Lock	1	HT25	
92	41687	Lock	1	HT25	
93	41688	Lock	1	HT25	
94	41689	Lock	1	HT25	
95	41690	Lock	1	HT25	
96	41691	Lock	1	HT25	
97	41692	Lock	1	HT25	
98	41693	Lock	1	HT25	
99	41694	Lock	1	HT25	
100	41695	Lock	1	HT25	

6



TOP EXPLANATION OF DIMENSIONING ETC. SEE C.I. MARK NOTE SHEET N.S.1.
FIRST ANGLE PROJECTION. DIMENSIONS ARE IN MILLIMETRES.

Part	Part No.	Quantity	Material
1	3016 552-2	1	STEEL
2	3016 552-1	1	STEEL
3	3016 552-3	1	STEEL
4	3016 552-4	1	STEEL
5	3016 552-5	1	STEEL
6	3016 552-6	1	STEEL
7	3016 552-7	1	STEEL
8	3016 552-8	1	STEEL
9	3016 552-9	1	STEEL
10	3016 552-10	1	STEEL
11	3016 552-11	1	STEEL
12	3016 552-12	1	STEEL
13	3016 552-13	1	STEEL
14	3016 552-14	1	STEEL
15	3016 552-15	1	STEEL
16	3016 552-16	1	STEEL
17	3016 552-17	1	STEEL
18	3016 552-18	1	STEEL
19	3016 552-19	1	STEEL
20	3016 552-20	1	STEEL
21	3016 552-21	1	STEEL
22	3016 552-22	1	STEEL
23	3016 552-23	1	STEEL
24	3016 552-24	1	STEEL
25	3016 552-25	1	STEEL
26	3016 552-26	1	STEEL
27	3016 552-27	1	STEEL
28	3016 552-28	1	STEEL
29	3016 552-29	1	STEEL
30	3016 552-30	1	STEEL

Trial Version (Visit <http://www.pdf-software.com>)

Surface treatment : V051

ALT. PART - B.S. 970 Pt 1, 2, 3, 4, 5, 6, 7, 8, 9, 10, 11, 12, 13, 14, 15, 16, 17, 18, 19, 20, 21, 22, 23, 24, 25, 26, 27, 28, 29, 30.
HEAT TREATED TO ACHIEVE THE FOLLOWING
TENSILE STRENGTH (MIN)
YIELD STRENGTH (MIN)
Elongation - 12% (WITH GAUGE LENGTH 5.65 (3.0))
HARDNESS - HB 350 - 380

SUPERSEDES 3016 552-2

Part No.	3016 552-2
Rev.	01
Issue Date	01/01/98
Drawn By	...
Checked By	...
Approved By	...
Part Name	...
Material	...
Quantity	1
Unit	...
Scale	...
Sheet No.	3
Total Sheets	3
Project No.	...
Customer No.	...
Order No.	...
Invoice No.	...
Part No.	...
Rev.	...
Issue Date	...
Drawn By	...
Checked By	...
Approved By	...
Part Name	...
Material	...
Quantity	...
Unit	...
Scale	...
Sheet No.	...
Total Sheets	...
Project No.	...
Customer No.	...
Order No.	...
Invoice No.	...