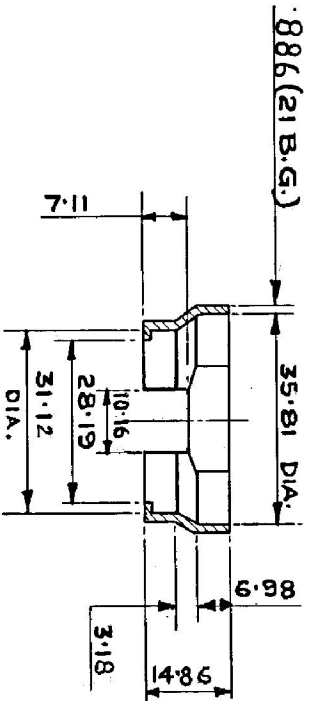
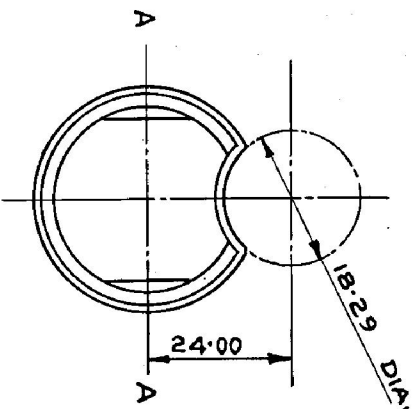


DS.CAT.NO.
1005-001526

FOR EXPLANATION SEE D.D. NOTE SHEET NO.3
THIRD ANGLE PROJECTION. DIMENSIONS ARE IN MILLIMETRES.



SECTION AA.

ALT. MATERIAL.
STEEL IS: 4030 WITH TENSILE STRENGTH
315 Kg/cm² MIN

NOTE :-
WHERE TOLERANCES ARE NOT SHOWN
DIMENSIONS IN WHOLE NUMBER OR WITH
ONE DECIMAL PLACE ± 1.27 mm.
DIMENSIONS WITH TWO DECIMAL PLACES ± 0.13mm

FINISH :- PHOSPHATE TO SPECN ~~BS 680~~ JSS. 0465-01:1988

CLASS I PAINT REF FINISHING AMMUNITION-STOVING
BLACK SPRAYING FOR SMALL ARMS TO SPECN.
~~BS 680~~ JSS. 8010-37.

METRIC

ASSLY. DRG. 1005-001507

INSR INSTRNS.

DRAWN CHECKED TRACED TRN. CHD.

APPROVED

DATE: - 19.6.67

DESIGNER'S REF.

ARDE 657/26.

DS.CAT. NO.
1005-001526

CISA. ICHAPUR

MATERIAL AND PROTECTIVE FINISH AMENDED
FINISH NOTE AMENDED

MATL. AMENDED
DRG. SEALED

AMENDMENTS.

SEALED :- D.C.(I) 14974-SA DT. 7.1.77

MATERIAL :- BS 1449 PT.1, 1983 CS-12

PROTECTIVE FINISH :- AS ON DRG.

ESTIMATED WEIGHT :-

RING RETAINING HAND GUARDS.

1 2 3 4