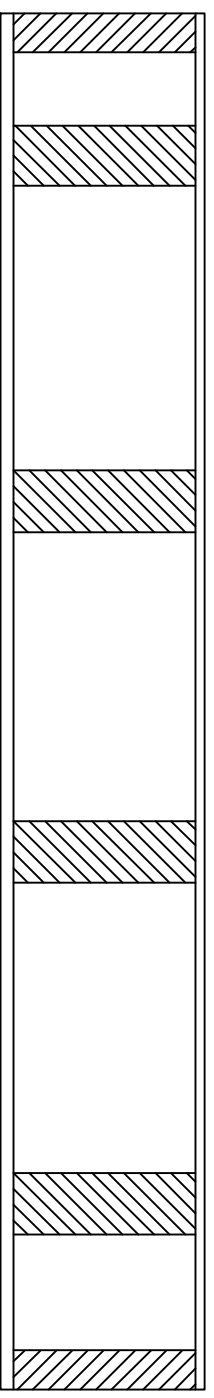


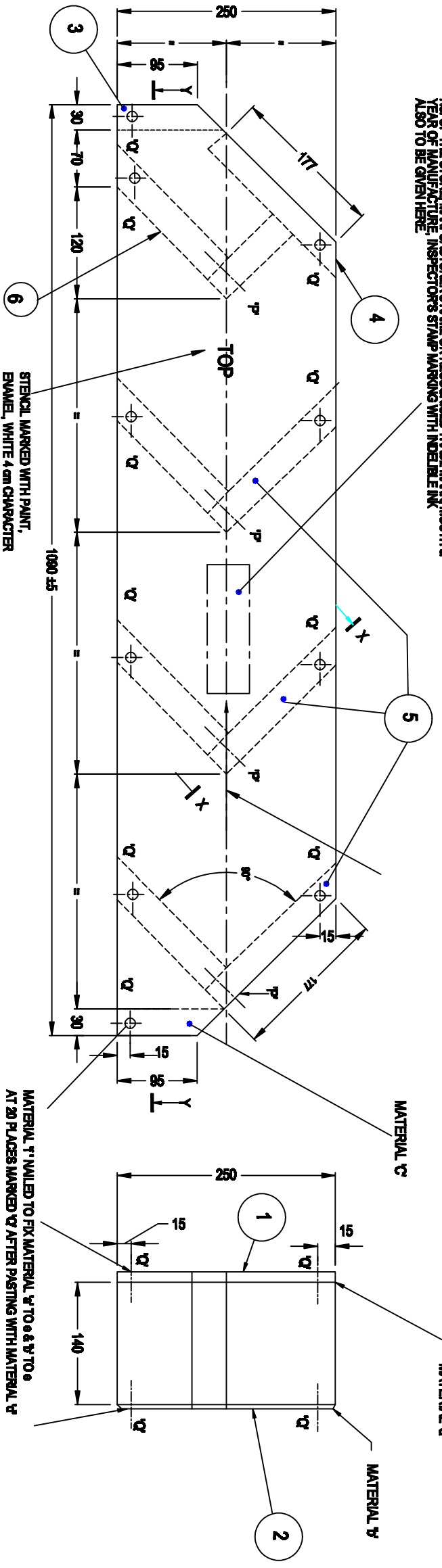
1	2	3	4	5	6	7	8	9	10	11	12
8 OF 1 LEAFS		DIMAS ARE IN mm UNLESS ON THE WERE STATED.									
6111 / EDRDY		GEN TOL : ± 0.2 mm EXCEPT WHERE OTHERWISE SPECIFIED									
DRG. No.											

NOTE:-
 (i) MATERIAL 'v', 'y' & 'z' PASTED WITH MATERIAL 'v' AT ALL CONTACT SURFACES PRIOR TO NAILING
 (ii) ALL SHARP EDGES TO BE ROUNDED
 (iii) ALL EXPOSED SURFACES OF MATERIALS 'v' & 'y' SHALL BE PAINTED WITH WOOD PRIMER AND THEN WITH EMERALD PAINT O.G OR DESIRED SHADE AND FINISHED SMOOTH.



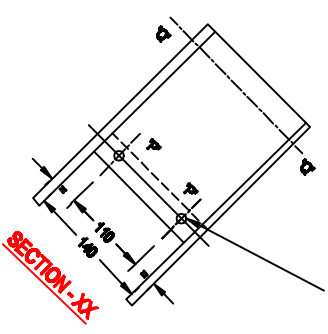
PLACE FOR IDENTIFICATION MARKING - SIZE 100 mm X 250 mm. TO BE STENCIL MARKED WITH EMERALD PAINT, WHITE SHOWING NOMENCLATURE & C.V. NO. OF THE STORE, MANUFACTURER'S NAME OR RECORDED TRADE MARK, MONTH & YEAR OF MANUFACTURE. INSPECTOR'S STAMP MARKING WITH INDELEIBLE INK ALSO TO BE GIVEN HERE.

SECTION - YY



STENCIL MARKED WITH PAINT, EMERALD, WHITE 4mm CHARACTER

MATERIAL 't' NAILED TO FIX MATERIAL 'v' TO & 'y' TO 'z' AT 20 PLACES MARKED 'v' AFTER PASTING WITH MATERIAL 'v'



MATERIAL 'v' TO BE PASTED AT THE CONTACT SURFACE OF PERPENDICULAR JOINT OF SLABS OF MATERIAL 'v' PRIOR TO NAILING AND MATERIAL 'v' NAILED TO FIX MATERIAL 'v' AT 8 PLACES MARKED 'v'

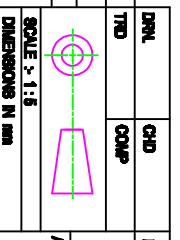
7	PACKING		8
6	MIDDLE SUPPORT - SMALL	1	7
5	MIDDLE SUPPORT - LARGE	3	6
4	END SUPPORT - LARGE	1	5
3	END SUPPORT - SMALL	2	4
2	BOTTOM COVER	1	3
1	TOP COVER	1	2
	ASSEMBLY (ITEM - 1 REMOVED)		
	ASSEMBLY		
ITEM No.	NOMENCLATURE	DRG No./ SPECN. No.	No. OF SHEET

ASSEMBLY

1	PAINT, EMERALD, WHITE	STANDARD TRADE QUALITY
2	PAINT, WOOD PRIMER	STANDARD TRADE QUALITY
3	PAINT, EMERALD, OLIVE GREEN	STANDARD TRADE QUALITY
4	NAIL, WIRE BRTEE, CRK HEAD, 2 mm Ø X 39 mm LONG	IS : 729 - 1972
5	NAIL, WIRE BRTEE, CRK HEAD, 2.5 mm Ø X 50 mm LONG	IS : 729 - 1972
6	SYNTHETIC RESIN ADHESIVE FOR PLY WOOD	IS 246 - 1974
7	EXPANDED POLYETHYLENE INSULATED	QMS/EN IN ITEM 3 - 6
8	PLYWOOD, GENERAL PURPOSE, WHR GRADE, 3 mm (9 PLY)	IS 203 - 1980
9	PLYWOOD, GENERAL PURPOSE, WHR GRADE, 13 mm (20 PLY)	IS 203 - 1975
	GRIL	SPECN. No.

LIST OF MATERIALS

R No.	DATE	AUTHORITY	BRIEF RECORD	ZONE	CD	DRG OMC



DRG OMC	PRO. OFF
DRG OMC	PRO. OFF
APPROVED	PJD
APPROVED	PJD
DESIGN AUTHORITY	DIRECTOR

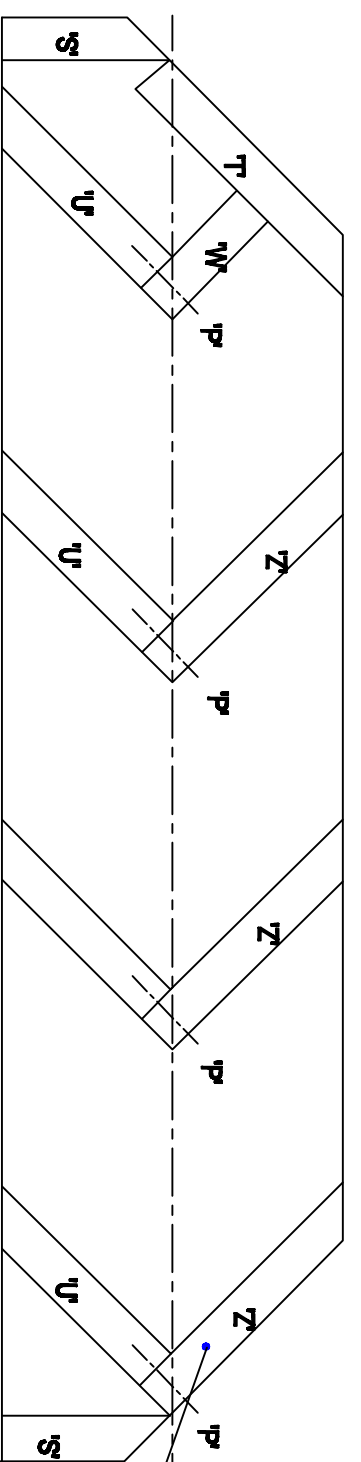
2P - 224 - 0601 - 70
 SHOCK ABSORBER
 (H.D. SYSTEM FOR AN - 32 AC)

DRG. No. ADPDE / 1119
 SHEET 1 OF 8

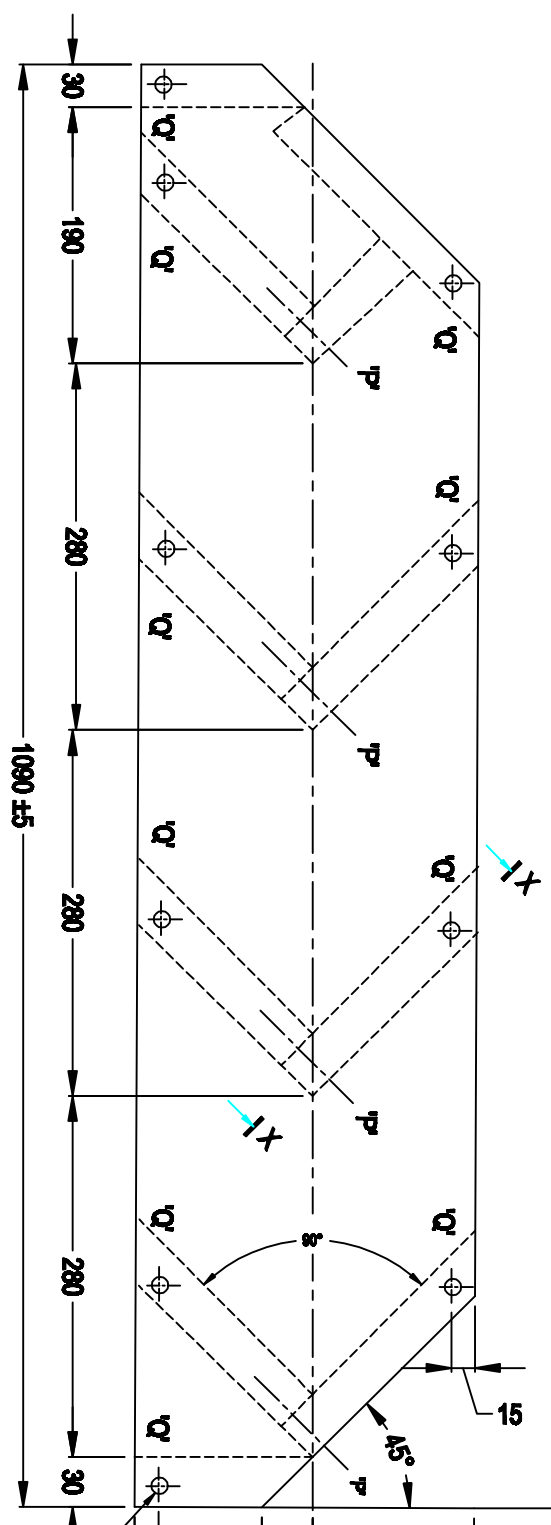
NOTE:- SPECIFICATIONS MENTIONED IN THE LIST OF MATERIALS UNDER THE COLUMN DRG. No. SPECN. No. SHALL BE TAKEN AS THE LATEST ISSUE OF THAT SPECIFICATION.

8	OF	2	SHEETS
DRGNS ARE IN mm UNLESS ON THE VISE STATED.			
GEN TOL. : ±0.2 mm EXCEPT WHERE OTHERWISE SPECIFIED			
DRG. No. 1111 / EDRD/AD			

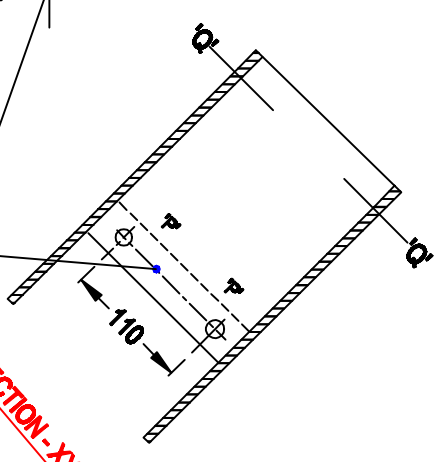
SIZES OF PARTS (ITEMS) MADE FROM MATERIAL 'C'		
SIZE	QTY	
'S' — 125 mm	2	
'T' — 207 mm	1	
'U' — 177 mm	4	
'W' — 105 mm	1	
'Z' — 207 mm	3	



MATERIAL 'B' REMOVED



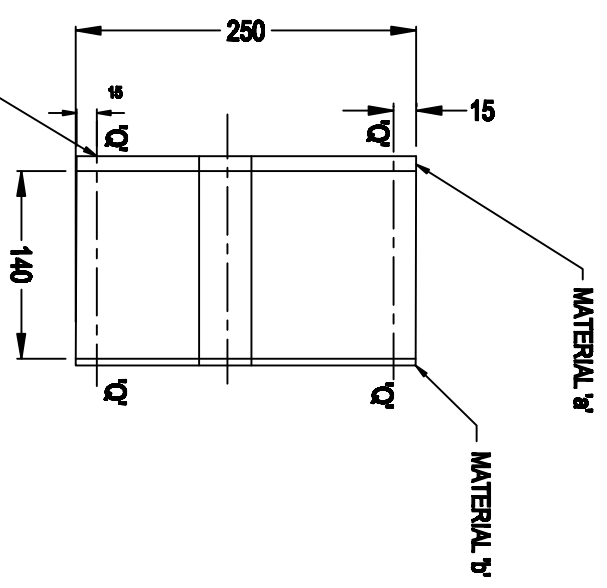
MATERIAL 'C' TO BE PASTED AT THE CONTACT SURFACES OF PERPENDICULAR JOINTS OF SLABS (MATERIAL 'C') PRIOR TO NAILING, AND MATERIAL 'B' NAILED TO FIX MATERIAL 'C' AT EIGHT (8) PLACES, MARKED 'P'



SECTION - XX

NOTE:- MATERIAL 'B', 'P' & 'C' PASTED WITH MATERIAL 'C' AT ALL CONTACT SURFACES PRIOR TO NAILING

MATERIAL 'T' NAILED TO FIX MATERIAL 'B' TO 'C' & 'P' TO 'C' AT 20 - PLACES MARKED 'Q' AFTER PASTING WITH MATERIAL 'C'



ASSEMBLY
(ITEM No 1 REMOVED)

DRG. NO.	DATE	AUTHORITY	BRIEF RECORD	ZONE	CD	DRG. OMC	SCALE > 1:5	DRG. DIMENSIONS IN mm	DRG. OMC	CHD	COMP	DRG. OMC	PRO. OFF.

2P - 224 - 0601 - 70
SHOCK ABSORBER
(H.D. SYSTEM FOR AN - 32 AC)

DESIGN AUTHORITY
ADROE, AGRA

DRG. No.
ADROE/1119

DRG. OMC
SHEET 2 OF 8

DRG. OMC
SHEET 2 OF 8

DRG. OMC
SHEET 2 OF 8

DRG. OMC
SHEET 2 OF 8

DRG. OMC
SHEET 2 OF 8

DRG. OMC
SHEET 2 OF 8

DRG. OMC
SHEET 2 OF 8

DRG. OMC
SHEET 2 OF 8

DRG. OMC
SHEET 2 OF 8

DRG. OMC
SHEET 2 OF 8

DRG. OMC
SHEET 2 OF 8

DRG. OMC
SHEET 2 OF 8

DRG. OMC
SHEET 2 OF 8

DRG. OMC
SHEET 2 OF 8

DRG. OMC
SHEET 2 OF 8

DRG. OMC
SHEET 2 OF 8

DRG. OMC
SHEET 2 OF 8

DRG. OMC
SHEET 2 OF 8

DRG. OMC
SHEET 2 OF 8

DRG. OMC
SHEET 2 OF 8

DRG. OMC
SHEET 2 OF 8

1 2 3 4

SHEET 3 OF 8

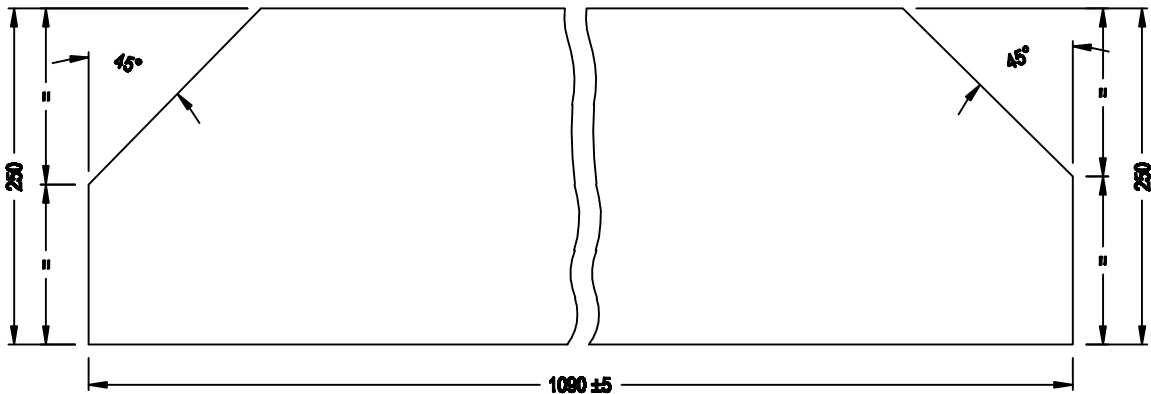
DIMNS ARE IN mm UNLESS OTHERWISE STATED.

DRG. No.
ADRDE / 1119

GEN TOL:- ±2 mm EXCEPT WHERE OTHERWISE SPECIFIED

1

2



TOP AND BOTTOM COVER
1 - OFF

2	BOTTOM COVER	b	1
1	TOP COVER	a	1
ITEM No.	NOMENCLATURE	MATERIAL	No. OFF

INDEX

R. No.	DATE	AUTHORITY	BRIEF RECORD	ZONE	CD	GO
					SIGN	

DRG SEALED						
DRN.	KSM	CHD.	TRD	COMP	DETAIL. DRG.	
O 1/C DRG.OFF	PRO. OFFR	PASSED	SCALE :- 1:5		DESIGN AUTHORITY ADRDE, AGRA	
APPROVED		P & D	EST WEIGHT :-			
		DIRECTOR	GAUGE SCHD :-			
MATL:- AS GIVEN IN MATERIAL TABLE IN ASSEMBLY DRG, SHEET 1				DATE :-		
PROTECTIVE FINISH :- AS GIVEN IN ASSY DRG.						

<p>2P - 224 - 0601 - 70 SHOCK ABSORBER (H.D. SYSTEM FOR AN - 32 A/C)</p>			DRG. No.	
			ADRDE / 1119	DETAIL. No. 182
			PART No.	
			D S CAT No.	
			SHEET 3 OF 8	

1

2

3

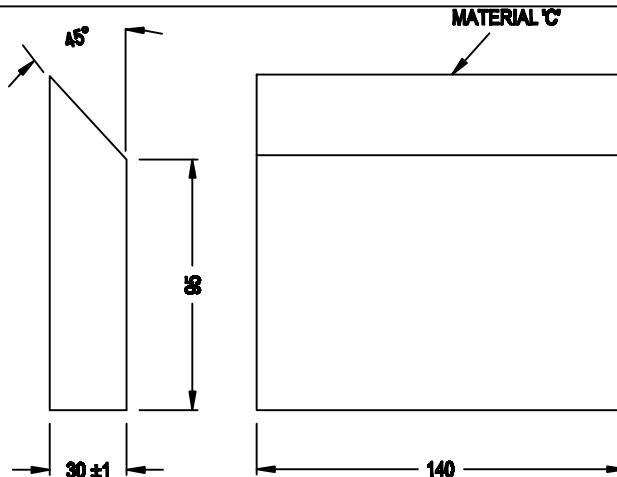
4

SHEET 4 OF 8

DIMNS ARE IN mm UNLESS OTHERWISE STATED.

DRG. No.
ADRDE / 1119

GEN TOL:- ±2 mm EXCEPT WHERE OTHERWISE SPECIFIED



END SUPPORT - SMALL
2 - OFF

3

MATERIAL:- EXPANDED POLYSTYRENE, MOULDED & FINISHED TO SIZE, GENERALLY CONFORMING TO SPECN. IS: 4671 - 1984 IN 4 OF IS: 5688 - 1982

AVERAGE BULK DENSITY:- 60 ± 3 kg/m³, AS REQUIRED VIDE PARA 4.1 OF IS: 4671 - 1984 WHEN TESTED IN ACCORDANCE WITH THE METHOD PRESCRIBED

AVERAGE COMPRESSIVE STRENGTH AT 10 % DEFORMATION:- 4 kgf/cm² (MIN) WHEN TESTED IN ACCORDANCE WITH METHOD GIVEN IN APPENDIX A PARA A - I TO A-7 OF IS:4671 - 1984

R. No.	DATE	AUTHORITY	BRIEF RECORD	ZONE	CD	GO
					SIGN	

DRG SEALED						
DRN.	KSM	CHD.	TRD	COMP	DETAIL. DRG.	
O 1/C DRG.OFF Sd.	PRO. OFFR Sd.	PASSED Sd. P & D	SCALE :- 1:2	DESIGN AUTHORITY		
APPROVED Sd. DIRECTOR			EST WEIGHT :-	ADRDE, AGRA		
			GAUGE SCHD :-			
			DATE :-			
MATL:- AS SPECIFIED IN THE 'LIST OF MATLS' & ABOVE						
PROTECTIVE FINISH :- NIL						

<p align="center">2P - 224 - 0601 - 70 SHOCK ABSORBER (H.D. SYSTEM FOR AN - 32 A/C)</p>			DRG. No.			
			ADRDE / 1119		DETAIL. No. 3	
			PART No.			
			D S CAT No.			
SHEET 4 OF 8						

1

2

3

4 DO/104/88