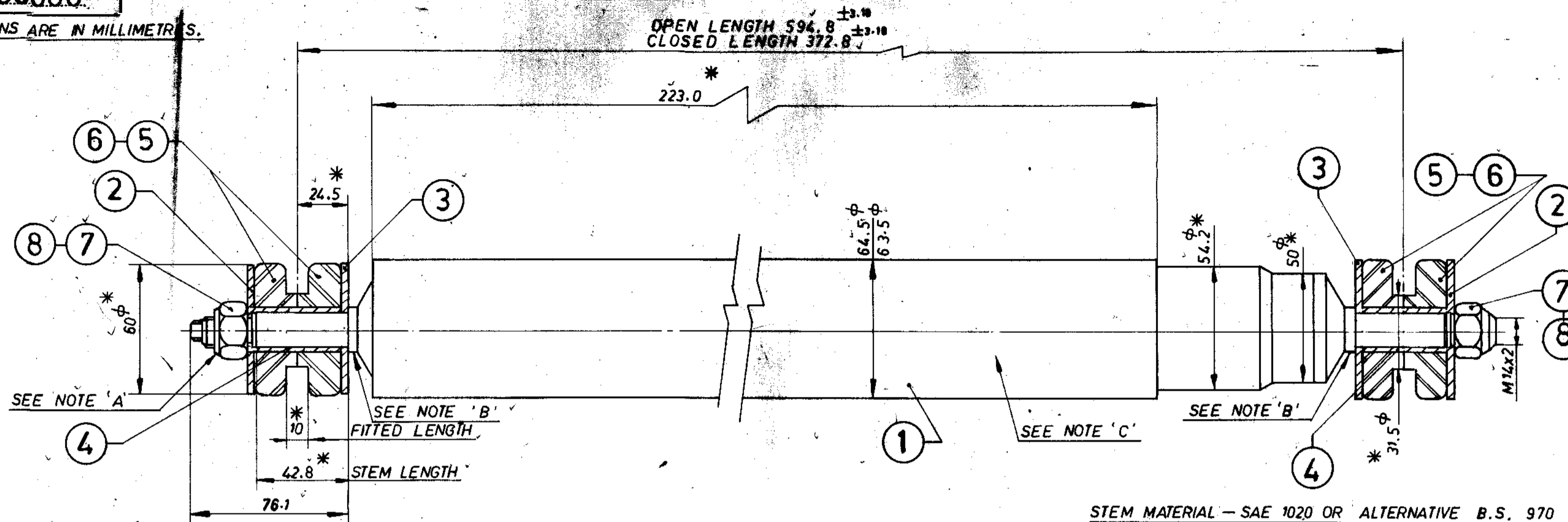


ALL DIMENSIONS ARE IN MILLIMETRS.



PISTON SPEED(M/SEC)	REBOUND (N)	COMPRESSION (N)
0.052	150 ± 30	150 ± 30
0.131	440 ± 75	280 ± 48
0.262	760 ± 114	360 ± 54
0.393	1040 ± 135	400 ± 52
0.524	1340 ± 134	470 ± 47
1.000	2390 ± 239	720 ± 77
1.500	3640 ± 364	1030 ± 103

STEM MATERIAL - SAE 1020 OR ALTERNATIVE B.S. 970 PART-I (1972) 050 A20 (En2C).

DIMENSIONS GIVEN FOR END FITTINGS ARE SAME FOR BOTH ENDS

DIMENSIONS MARKED * ARE FOR REFERENCE ONLY.

LOAD VELOCITY TEST - TO COMPLY WITH ARMSTRONG SPEC. AP 34.

FINISH - TO COMPLY WITH ARMSTRONG SPEC. 213/0224 AP 5/8

OIL - TO COMPLY WITH ARMSTRONG SPEC. 1189 AP3/1.

MAXIMUM AND MINIMUM AMBIENT TEMPS TO +49°C, -40°C.

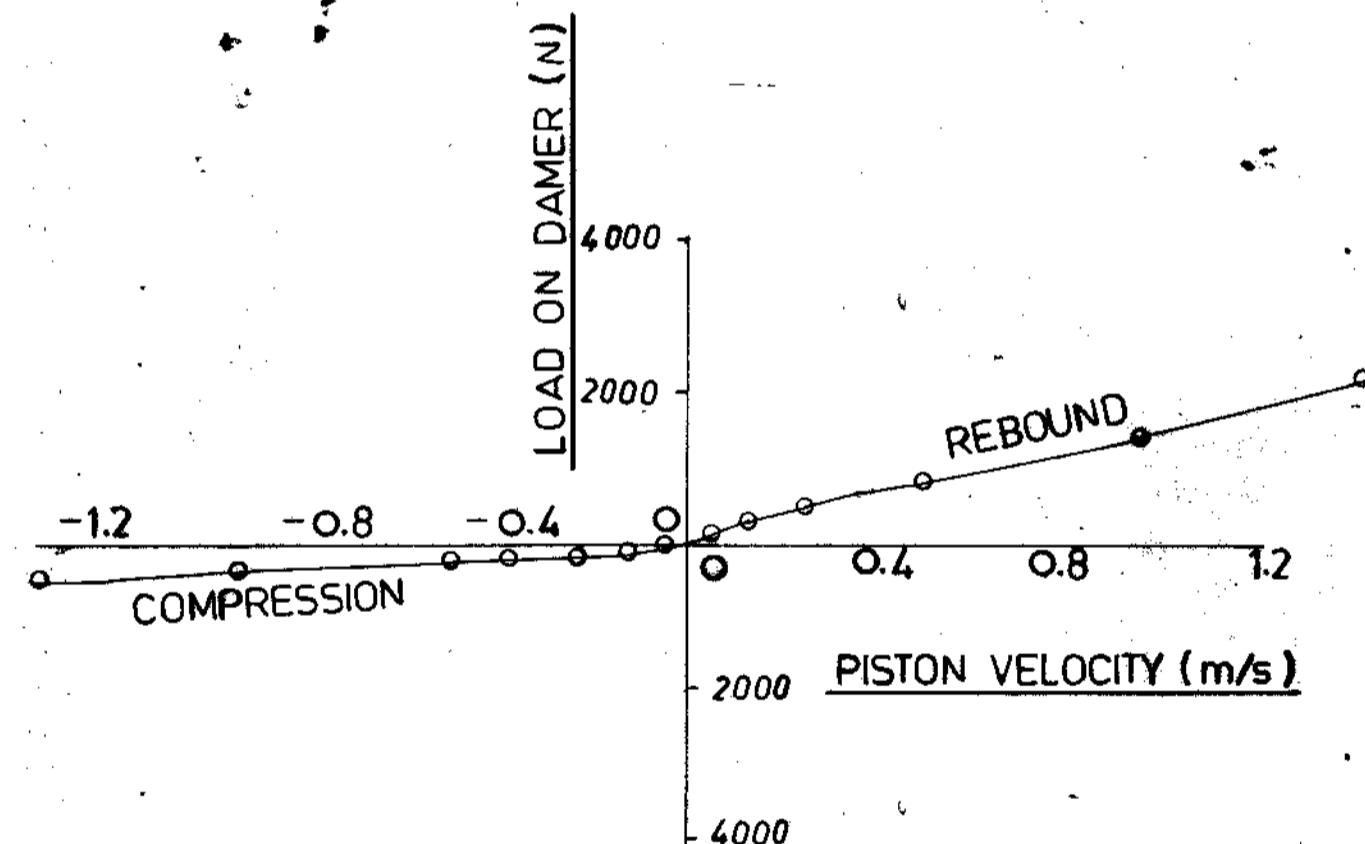
NOTE A - TIGHTEN NUTS TO TORQUE OF 47-57 NM (BOTH ENDS).

NOTE B - PROJECTION WELD STEM TO B.S. 2996 (1958) ONLY.

NOTE C - ARMSTRONG TYPE AND PART NO. AND LEYLAND VEHICLES.

PART NO. TO BE STAMPED ON RESERVE TUBE.

NOTE - SHOCK ABSORBER TO GENERALLY CONFIRM TO IS : 5423 - 1989.



ITEM NO.	PART NO.	DESCRIPTION	NO. OFF
8	NY114041	PREV TORQUE NUT M14 (ALT.)	2
7	NV114041	PREV TORQUE NUT M14	2
6	AAU 7156	MOUNTING RUBBER (ALT.)	4
5	AAU 5043	MOUNTING RUBBER	4
4	CAL 9768	SPACER	2
3	CAL 9766	FLAT WASHER	2
2	CAL 9767	FLAT WASHER	2
1	HNK 2248	DAMPER (SUB-ASSEMBLY)	1

APPROVED ENGINEERING SUPPLIERS		
MANUFACTURE	TPPE	NO
ARMSTRONG.	N 65	

SEALED
CERTIFIED CORRECT
COPY DATE.....
SIGNATURE.....

The copyright of these drawings and all attachments there to belongs to the Indian Ordnance Factories, Ministry of Defence, Govt. of India. They should not be copied, reproduced in any way or the information contained therein made available to unauthorized persons without the written permission of the Director General of Ordnance Factories.

PART No.	DESCRIPTION	MATERIAL	NO. OFF	DRG. NO.	DIFFERENCE
DRAWINGS RETRACED.					
ALTERATION					
Date: 13.1.04					
Shop: JWM D.S.					
Scale: 1:1					
Ref. Drg.:					
Replaced By:					
Replacement for:					
VEHICLE FACTORY JABALPUR.					F 7469600