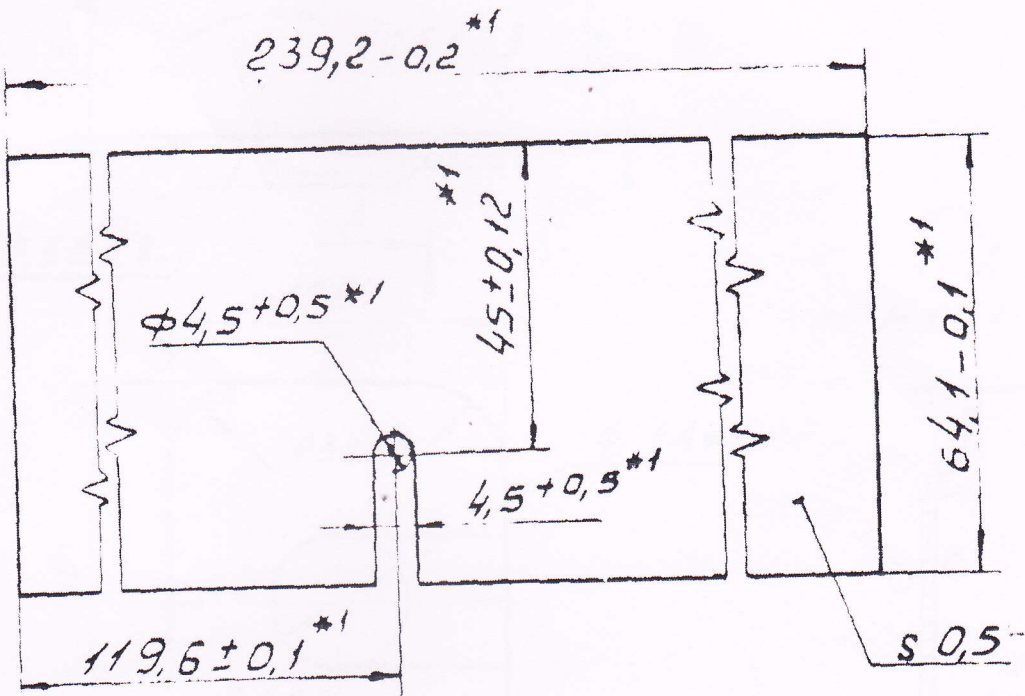


8610-8891-0044
 447 842 050
 050 278 174

A16-1
 48

1-8-685-056 TH10-1688-019B TH10-1688-050
 445.935.058



- 1. * DIMENSION FOR REFERENCE
- 2. * DIMENSIONS SHOULD BE ENSURED BY TOOL.

1. * Размер для справок.

2. * Размеры обеспечиваются инстру-

ментом

VETTED
 IC USER

up dated up to 31/5/89 DO (D.L.F)

A47.842.050

ISSUE	DATE	REFERENCE	SHEET	MASS	SCALE
✓	5.10.90	D.C.(1)-5423-I DRG. SEALED.			
✓	10.7.90	(A)D.C.(1)-1462-I(P) MATL. AMENDED.			
✓	1.12.87	D.C.(1)-1232-I(P) DRG. PROV. SEALED			
APPROVED		21/3/85			
CHECKED		16/3/80			
DRAWN		27/2/85			
ADHESIVE FILM			108!	0.0091	1:1
MATERIAL: TAPE A-17, 0.5x1000 GOST 9438-85			HEAVY VEHICLES FACTORY AVADI (29)		

D.C.(1)-1232-I(P), 1462-I(P), 5423-I
 13927-29A

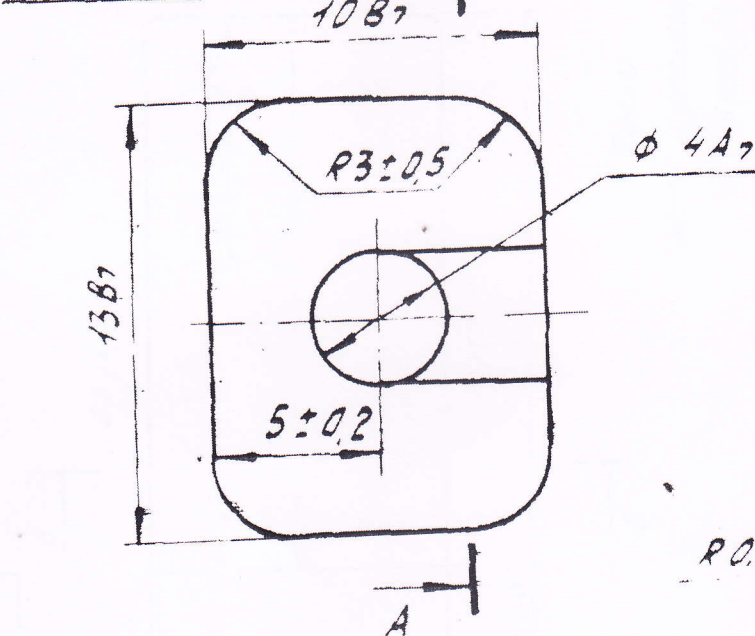
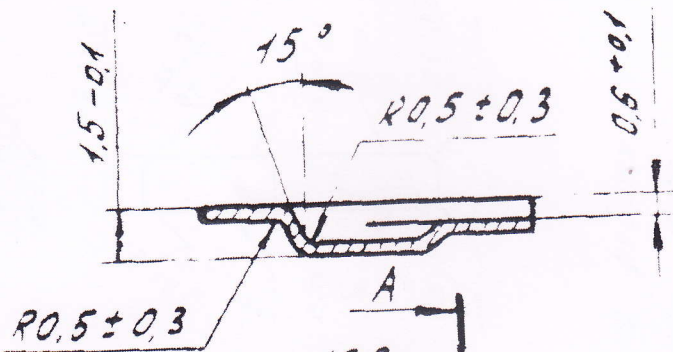
Восстановлен с подлинника. Верно.

АЦ.5.935.058

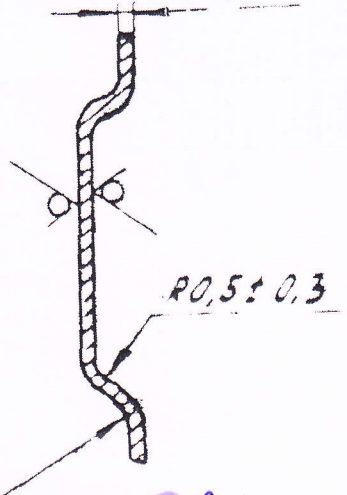
ТНД - 1688 - 042

АЦ8 210 013

R280



A-A
M 10:1 Scale 10:1
0.2*



- 1. Burrs are not allowed.
- 2.*Dimension for reference.

1. Заусенцы не допускаются
2. * Размер для справок.

VETTED

IC USER

IC QA

CAT/PT.No.
5905-020253

G/No 4131

up dated up to 31/5/89 DO (O.L.F)

АЦ8.210.013.

A2
64

APPROVED		25.5.85
CHECKED	K. Damodan	24.5.85
DRAWN	M. Maniappan	13/5/85

COVER, THERMAL RESISTOR.

SHEET	MASS.	SCALE
1 OF 1	0.0002	5:1

MATERIAL:
COPPER MI GOST 1173-77.

HEAVY VEHICLES FACTORY
AVADI

D. C (I):-1231-I(P), 5421-I, 5562-I.

2

20/10 (V)

B=B
M4:1

33 ± 0.3

90° ± 20'

0.5/80

8

65-1

240-1.5

45°

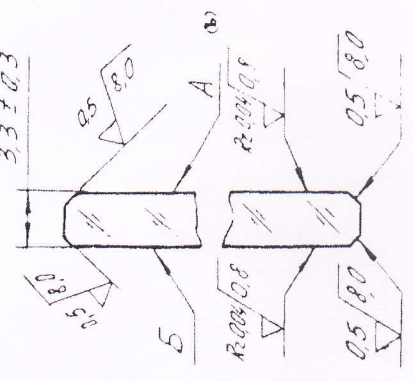
2 ± 1

1/16-1
65

ALL 8 640 107

THND-1688-026
ALL 5 944 010

Δ ПЕ	5
Δ (ПР-ПЕ')	5
НОВИТЕНЕТИ	5
ПОДРОБНО	5
РЕФРАКЦИОН	5
ОСЛАБЯВАЩЕ	8
ПОСЛАБИТЕЛ	*
ПОСЛАБИТЕЛ	PE
РА, Рb	VII



1. ФАСКИ НА РЕБРАХ 0.5 ± 0.5 x 45°, КРОМЕ МЕСТ УКАЗАННЫХ СЛОБО.

2. БЕСПОВЫРНОСТЬ И ОСТАТКОВЫЕ ТЕХНИЧЕСКИЕ ТРЕБОВАНИЯ ПО ТУЗ - 3.834 - 78.

1. UNLESS OTHERWISE SPECIFIED THE CHAMFERS ON EDGES SHOULD BE 0.5 ± 0.5 x 45°

2. NONSTRIATION AND OTHER TECHNICAL REQUIREMENTS ARE AS PER TУЗ-3834-78

VETTED
HEINER
100.A.

up dated up to 8/15/89 00(02.E)

STDC 5777-I DETAIL OF MATH. & TABLE AMENDED	2.10.93	10.7.90	1-12.87	DRG. SEaled	DRG. PROV. SEALED	DRG. SEaled	DRG. PROV. SEALED
APPROVED	DATE	REFERENCE	DATE	REFERENCE	DATE	REFERENCE	DATE
CHECKED							
DRAWN							
MATERIAL: GLASS AK 108				MATERIAL: GLASS AK 108			
CONST. 35.14-76 E				CONST. 35.14-76 E			
ALL 8 640 107				ALL 8 640 107			
SHEET MASS SCALE				SHEET MASS SCALE			
1/81 0-11 1:1				1/81 0-11 1:1			
HEAVY VEHICLES FACTORY				HEAVY VEHICLES FACTORY			
AVADI (45)				AVADI (45)			

D.C.(1)-1232-I(P), 1462-I(P), E423-I, 5777-I

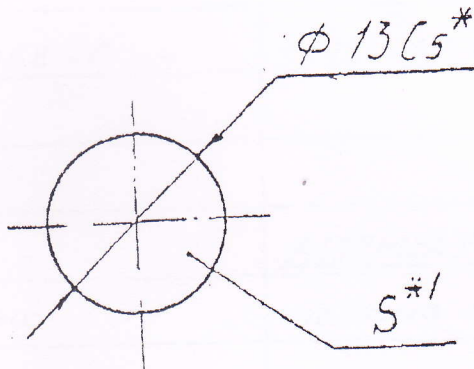
457 589 8774

28

ПРОБ. ДУМАК

АЦ 5 955 079 080

ТНПО - 170 - 021



④ CODE	⑤ S, MM	⑥ WEIGHT, KG Масса, кг
АЦ 8.683.234	0,5	0,000066
(a) (V5/RUS/AU8.683.234) -01	1,0	0,00015
AU8.683.234-02 (RUS/AU8.683.234 -02)	1,5	0,0002
AU8.683.234-03 (RUS/AU8.683.234 -03)	2,0	0,00026
AU8.683.234-04 (RUS/AU8.683.234 -04)	2,5	0,00033
AU8.683.234-05 (RUS/AU8.683.234 -05)	3,0	0,00042

- ⑥
- * Размер обеспеч. инстру.
 - * Размер для справок.
 - Заменитель материала - Пластина 254311
Резина 1847
- ТУ 005216-75
- * DIMENSION TO BE ENSURED BY TOOL.
 - DIMENSION FOR REFERENCE.
 - ALTERNATE MATERIAL PLATE 254311 RUBBER 1847 SPECS. 005216-75.

VETTED

IC USER

АЦ/НОЗ

CAT/PT. NO.
V5/RUS/AU8.683.234

UPDATED ON 8.3.92.

sol/sel

wm/09

CAT/PT. NO.
~~5850-015668~~

GROUP No. 41315 RD		FOLDER/SHEET No. 25/20	
DRG. No: АЦ 8.683.234			
SHEET		WEIGHT	
SCALE		2:1	
GASKET			
MATERIAL <u>PLATE 254311-5</u> <u>RUBBER 331</u> SPECS. 005-16-75		DRONANCE FACTORY PROJECT DCHRADUN	

22

D.C. - 1231-ICP, 1393-ICP, 5412-I, 6139-I, 6551-I