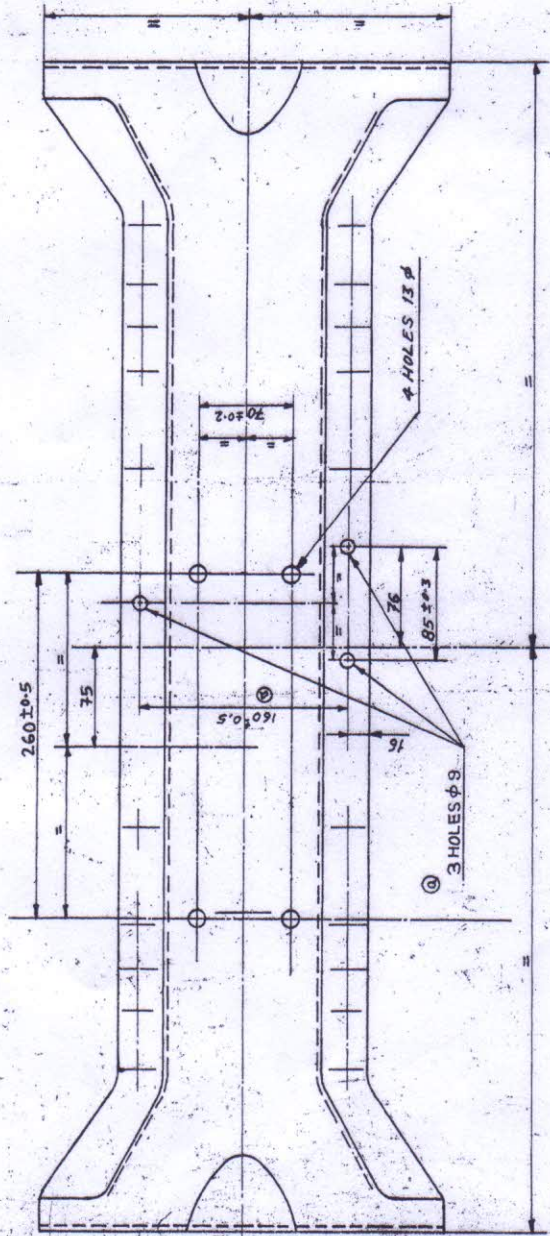


Do not scale the drawing. Unless otherwise stated ① All dimensions in mm. ② Dwg. drawn to first angle projection.



① VI 26/A 3120 82.21
ALL OTHER DETAILS ARE SAME AS DRG NO. 042-312-80-173

② V2 FABRICATED COMPONENTS TO BE PHOSPHATED TO CLASS-C AS PER IS: 3618 AND APPLIED IMMEDIATELY WITH RED OXIDE ZINC CHROMATE PRIMER TO IS: 2074. MACHINED SURFACE TO BE APPLIED WITH RUST PREVENTIVE OIL TO IS: 1154. FINISH PAINT TO BE APPLIED READY MIXED BRUSHING/- SPRAYING STOVING WITH SCAMIC (OLIVE GREEN) TO IS: S: 1994 COLOUR SHADE No. 294 PAINT SHOULD CONFIRM TO IS: 8982-91.

C.H. NOTE NO-0027 (V2)	14.05.13 NOTED	AD SWM TSS APPROVED	DATE	DATE
NEW RELEASE				
MATERIAL DESCRIPTION: Slip, Spec. Std. No.				
TOLERANCES: Measurements to be specially checked.				
MATERIAL: The size is the size property of the material and is not to be changed without the approval of the purchaser.				
DATE	MOD. NO.	SCALE	ZONE	D.O.
14.05.13		1:2.5		
APPROVED: [Signature]				
PRODUCT GROUP NO. 12.10.5D				
FRT ROLE				
SCALE: 1:2.5				
DIG. PART DESIGNATION				
CROSS MEMBER				
DRG. / PART NO. 2636 3120 82.01				
SHEET NO. 1 OF 1				

FOR FORGE DIVISION ONLY		Machining Deviation as per IS: 2002		Surface Roughness Symbols	
Country	Part No.	Max	Min	Symbol	Symbol
India	2636 3120 82.01	0.0125	0.0063	▽	▽
USA		0.0125	0.0063	▽	▽
UK		0.0125	0.0063	▽	▽
FRANCE		0.0125	0.0063	▽	▽
GERMANY		0.0125	0.0063	▽	▽
NET WEIGHT	1.154				

ERC
TATA ENGINEERING & LOCOMOTIVE CO. LTD.
PUNE