

THIS DOCUMENT AND THE INFORMATION CONTAINED IN IT ARE PROPRIETARY AND CONFIDENTIAL TO OFT. NO PERSON OR ENTITY IS ALLOWED TO COPY, REPRINT, REPRODUCE OR PUBLISH ANY PART OF THIS DOCUMENT, NOR DISCLOSE ITS CONTENTS TO OTHERS, NOR MAKE ANY USE OF IT, NOR ALLOW OR ASSIST OTHERS TO MAKE ANY USE OF IT UNLESS BY THE PRIOR WRITTEN EXPRESS AUTHORIZATION OF OFT AND THEN ONLY TO THE EXTENT AUTHORIZED.  
COPYRIGHT-OFT.

SHEET REV STATUS

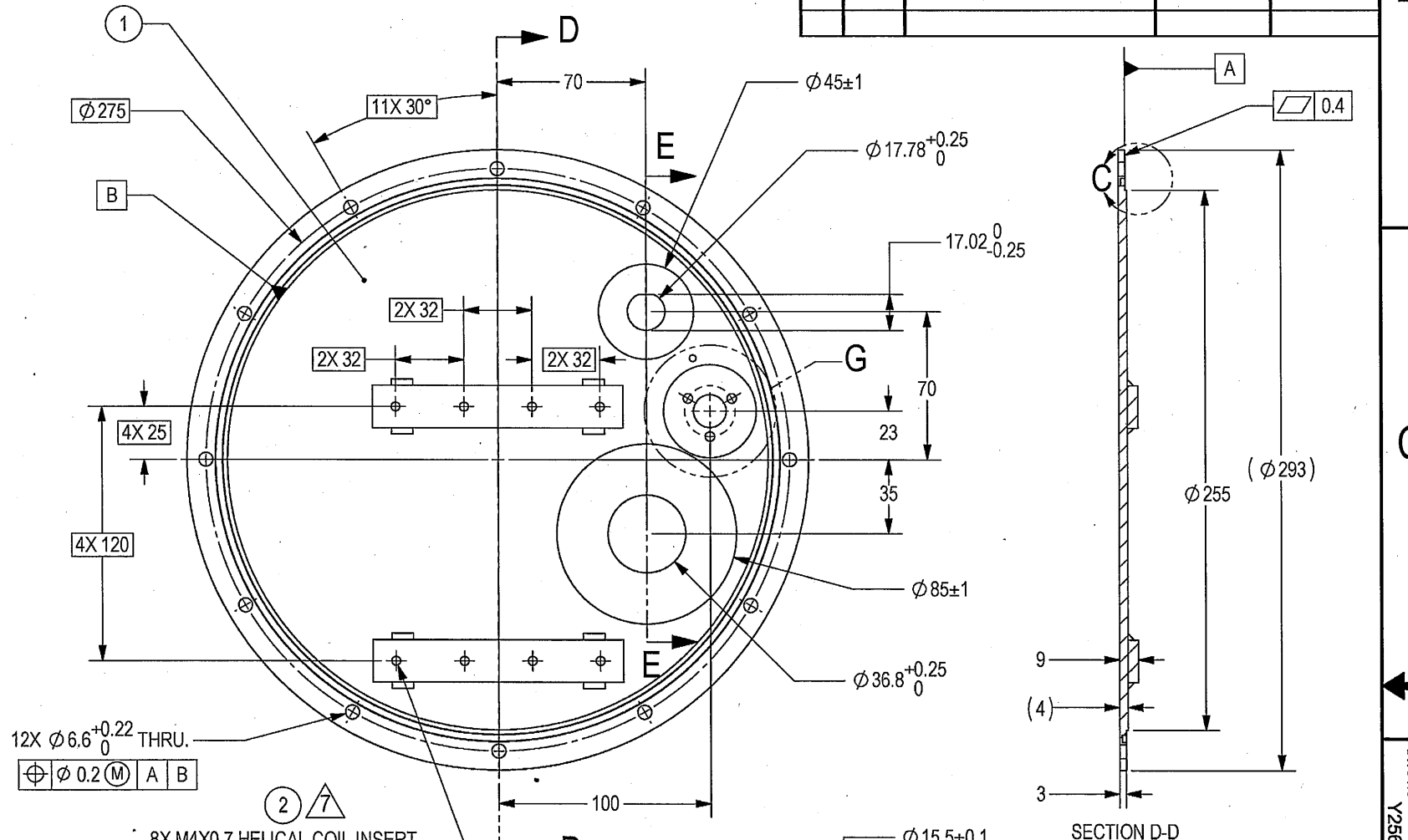
ALL SHEETS ARE THE SAME REVISION

REVISION RECORD

REV	ECO	DESCRIPTION	DATE	APVD
--	ZR1147/00	Released	04-Jun-19	Z. Rabayev

NOTES:

- INTERPRET THIS DRAWING IAW ASME Y14.100M. UNLESS OTHERWISE SPECIFIED DIMENSIONS ARE IN MM PER ASME Y14.5.
- MATERIAL: SEE FN/1.
- PARENTHEetical FIGURES ARE FOR REFERENCE ONLY.
- DEBURR AND REMOVE SHARP EDGES APPROX. 0.3X45°.
- MANUFACTURING FROM ONE PART OPTIONAL. IN THAT CASE USE MATERIAL AS SPECIFIED IN F/N 1 AND DRAWING OF F/N 1 IS FOR REFERENCE ONLY.
- FINISH:
  - CHROMATIC CONVERSION COATING PER MIL-DTL-5541F, TYPE I, CLASS 3.
  - ANODIC COATING PER MIL-A-8625 TYPE II 15 TO 25 MICRON THICK CLASS 1.
  - THE MARKED AREA , SPECIFIED THREADS AND HOLES SHALL BE PROTECTED AGAINST ANODIC COATING.
  - INSTALL INSERTS AFTER FINISH PER SAE MA 1567 USING PRIMER EPOXY PER MIL-P-53022.
- PAINT:
  - PRIMER: LEAD AND CHROMATE FREE EPOXY PRIMER PER MIL-DTL-53022 THICKNESS: 25-40 MICRONS, OR EQUIVALENT APPROVED BY ELBIT.
  - INTERMEDIATE: APPLY TWO LAYERS OF HIGH SOLID EPOXY POLYAMIDE PER MIL-PRF-22750 TYPE II CLASS H, EACH LAYER 30-50 MICRONS.
  - TOP COAT: APPLY TWO LAYERS OF ALIPHATIC POLYURETHANE PER MIL-PRF-85285 OR MIL-C-83286 RAL 9016 MATT. EACH LAYER 30-50 MICRONS.
  - AREAS MARKED BY , SPECIFIED THREADS AND HOLES MUST BE PROTECTED FROM PAINT.
- QUALITY ASSURANCE PROVISIONS ANSI/ASQC Z1.4  
ALL DIMENSIONS AND FINISH PER SQUEGLIA C=0 AQL 2.5%  
KEY DIMENSIONS 100% INSPECTION (MARKED BY FLAG KEY)  
VISUAL INSPECTION 100%.
- PACKAGING AND PACKING:  
THE FINISHED PART SHALL BE PRESERVED AND PACKAGED IN ACCORDANCE WITH COMMERCIAL PRACTICE.
- IDENTIFY PER MIL-STD-130 PARA 4.1.B, BY LABELING ITS CONTAINER WITH THE PART NUMBER. CHARACTERS 1.25 MM MIN. HIGH.



12X Ø6.6<sup>+0.22</sup><sub>0</sub> THRU.

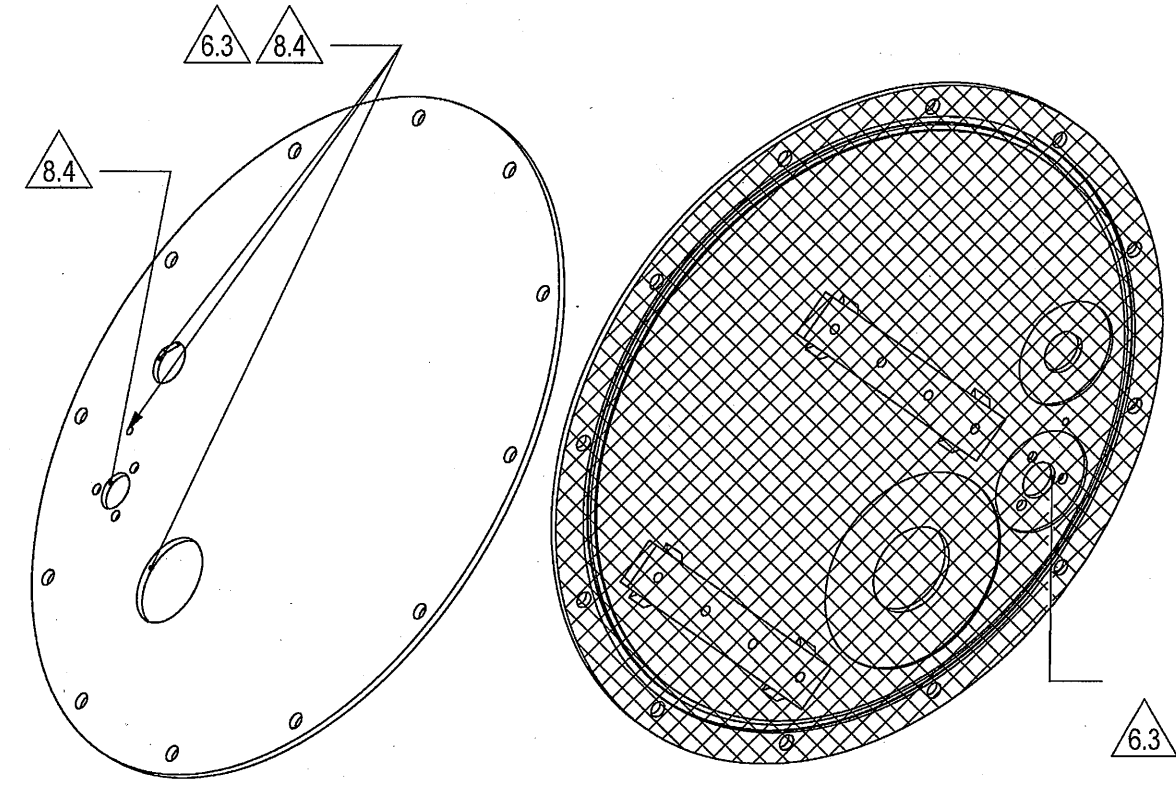
8X M4X0.7 HELICAL COIL INSERT  
 DRILL  $\nabla$  6.5+0.5  
 THD PER MA1567 X 1D  
 REMOVE TANG

M3X0.5  
 FOR HELICAL COIL INSERT  
 THD PER SAE  
 MA1567 X INSERT = 1.0° DIA.  
 REMOVE TANG

3X Ø 4.5<sup>+0.2</sup><sub>0</sub> THRU  
 Ø 44 DRILL  $\nabla$  1.5  
 Ø 24  
 DETAIL G SCALE 1:1

DETAIL C SCALE 2:1  
 1.6  
 3.45<sup>+0.15</sup><sub>0</sub>  
 1.6  
 1.95<sup>+0.10</sup><sub>0</sub>

SEE ATTACHED MEDIA  
 SEE SEPARATE PARTS LIST



6.3 8.4

SECTION E-E

PROJECT OFFICER  
 Approximate Weight: 0.7 [kg]

UNLESS OTHERWISE SPECIFIED		SIGNATURE	DATE	<b>ORDNANCE FACTORY</b> TIRUCHIRAPPALLI	FOR: PEDESTAL ASSY OF: 12.7MM SRCG
TOLERANCES LINEAR ISO-2768-m ANGULAR ISO-2768-m 1st ANGLE PROJECTION		DRAWN	04-12-20		
SURFACE TEXTURE IN Micro Meter		CHECKED		TITLE <b>COVER BLIND, POD, FINISHED</b>	
		HOS/DDO		SIZE <b>C</b>	CAGE CODE <b>2291A</b>
		OFFICER/PRODN		DWG NO <b>Y25649A-01</b>	
		OFFICER/QC		SCALE 1:2	AUTOMATED DRAWING (SW)
		OFFICER/DDO		SHEET 1 OF 1	

OFT

ASSEMBLY PARTS LIST

Assembly Parts List For: Y25649A-01

Rev: -

Status: Released

Description: COVER BLIND, POD, FINISHED

FN	CMD	PART NUM	ECO	DESCRIPTION	MB	QTY	U\M	REF. DES./REMARKS	MFG. PN / CUSTOMER	LA	LI
1	AM	065445A-00		COVER BLIND, POD WELDED	M	1	Each				
2	HM	99662215M		INSERT HCOIL CRES M 4X1D	P	8	Each		60043-TNM4X0.7C-4(SEE NOTES)		
3	HM	99662212M	P03433	INSERT HCOIL CRES M3X1D	P	1	Each		60043-TNM3X0.5C-3(SEE NOTES)		

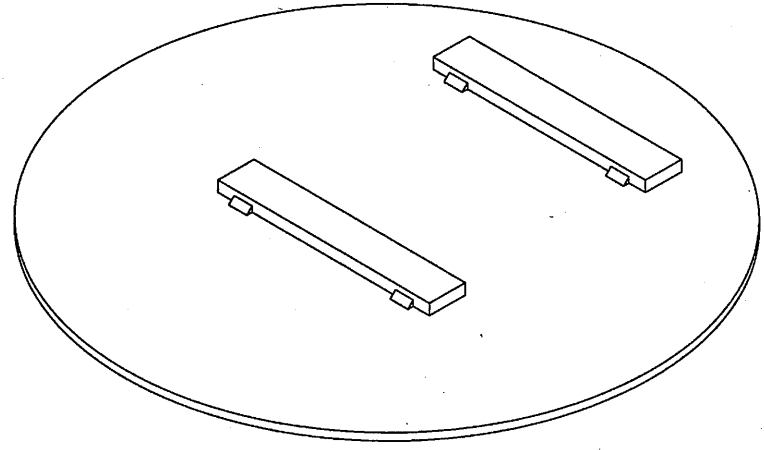
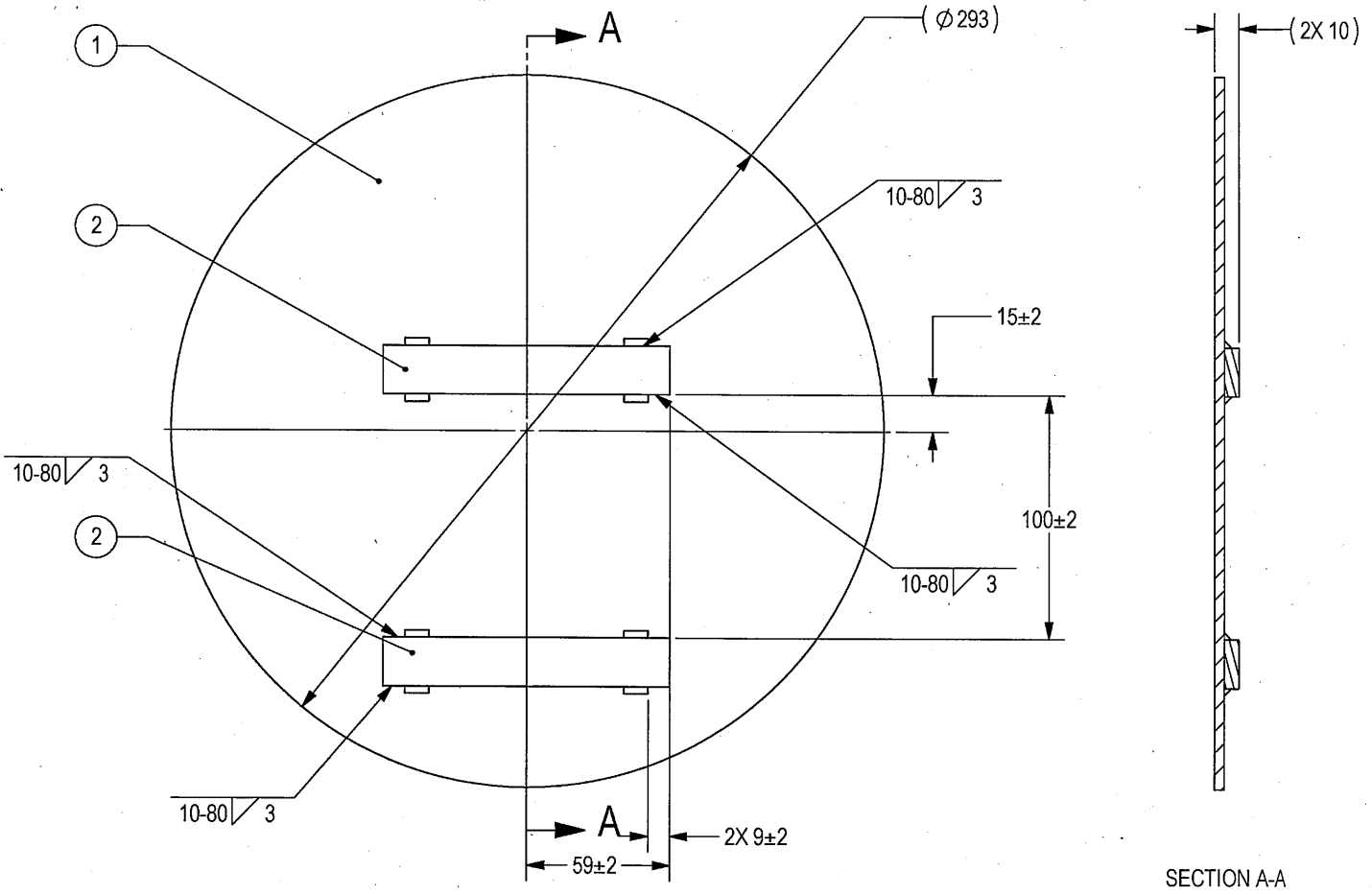
THIS DOCUMENT AND THE INFORMATION CONTAINED IN IT ARE PROPRIETARY AND CONFIDENTIAL TO OFT. NO PERSON OR ENTITY IS ALLOWED TO COPY, REPRINT, REPRODUCE OR PUBLISH ANY PART OF THIS DOCUMENT, NOR DISCLOSE ITS CONTENTS TO OTHERS, NOR MAKE ANY USE OF IT, NOR ALLOW OR ASSIST OTHERS TO MAKE ANY USE OF IT UNLESS BY THE PRIOR WRITTEN EXPRESS AUTHORIZATION OF OFT AND THEN ONLY TO THE EXTENT AUTHORIZED. COPYRIGHT-OFT.

SHEET REV STATUS  
ALL SHEETS ARE THE SAME REVISION

REVISION RECORD				
REV	ECO	DESCRIPTION	DATE	APVD
01		Freeze	11-Jul-12	
02		Freeze	05-Jun-13	
03		Restricted	15-Dec-13	
--	T00120	Identical To Previous Released	20-Sep-18	L. Goldshtein

NOTES:

- INTERPRET THIS DRAWING IAW ASME Y14.100M.
- MATERIAL: ALUMINIUM ALLOY PLATE 6061-T651 PER QQ-A-250/11 (FOR REFERENCE ONLY).
- WELDING PER AWS D1.2 GTAW VISUAL INSPECTION.
- QUALITY ASSURANCE PROVISIONS:  
4.1 QUALITY ASSURANCE PROVISIONS FOR THIS ITEM PER RDMQD00012P.
- PARENTHETICAL FIGURES ARE FOR REFERENCE ONLY.
- PACKAGING AND PACKING:  
THE FINISHED PART SHALL BE PRESERVED AND PACKAGED IN ACCORDANCE WITH COMMERCIAL PRACTICE.
- IDENTIFY PER MIL-STD-130 PARA 4.1.B, BY LABELING ITS CONTAINER WITH THE PART NUMBER. CHARACTERS MINIMUM TEXT HEIGHT 1.25 MM.



(WEIGHT APPROX.: 0.81 Kg.)

SEE SEPARATE PARTS LIST  
SEE ATTACHED MEDIA

UNLESS OTHERWISE SPECIFIED		SIGNATURE	DATE	<b>ORDNANCE FACTORY</b> TIRUCHIRAPPALLI
DIMENSIONS ARE IN MM PER ASME Y14.5M - 1994		DRAWN	21/11/20	
TOLERANCES		CHECKED		TITLE
LINEAR	ANGULAR	HOS/DDO		COVER BLIND, POD WELDED
1st ANGLE PROJECTION		OFFICER/PRODN		FOR: COVER BLIND, POD, FINISHED
SURFACE TEXTURE IN Micro INCH		OFFICER/QC		OF: 12.7MM SRCG
PROJECT OFFICER		OFFICER/DDO		SIZE C
				CAGE CODE 2291A
				DWG NO 065445A-00
				SCALE 1:2
				AUTOMATED DRAWING (SW)
				SHEET 1 OF 1

DWG NO 065445A-00  
SH 1

OFT

**ASSEMBLY PARTS LIST**

Assembly Parts List For: 065445A-00

Rev: -

Status: Released

Description: COVER BLIND, POD WELDED

FN	CMD	PART NUM	ECO	DESCRIPTION	MB	QTY	U\M	REF. DES./REMARKS	MFG. PN / CUSTOMER	LA	LI
1	MP	065446A-00		PLATE 2, BLIND COVER, POD	M	1	Each				
2	MP	065447A-00		BLOCK, BLIND COVER, POD	M	2	Each				

2

DWG NO 065446A-00

SH 1

1

SHEET REV RECORD

ALL SHEETS ARE THE SAME REVISION

REVISION RECORD

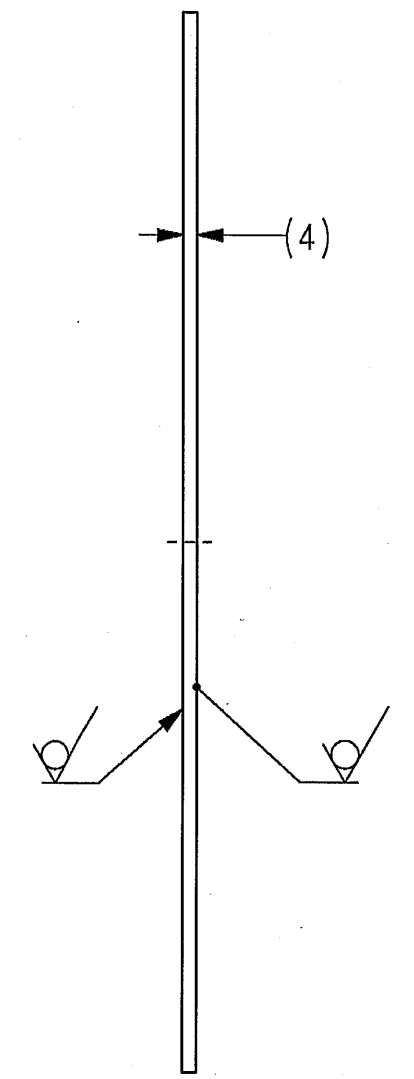
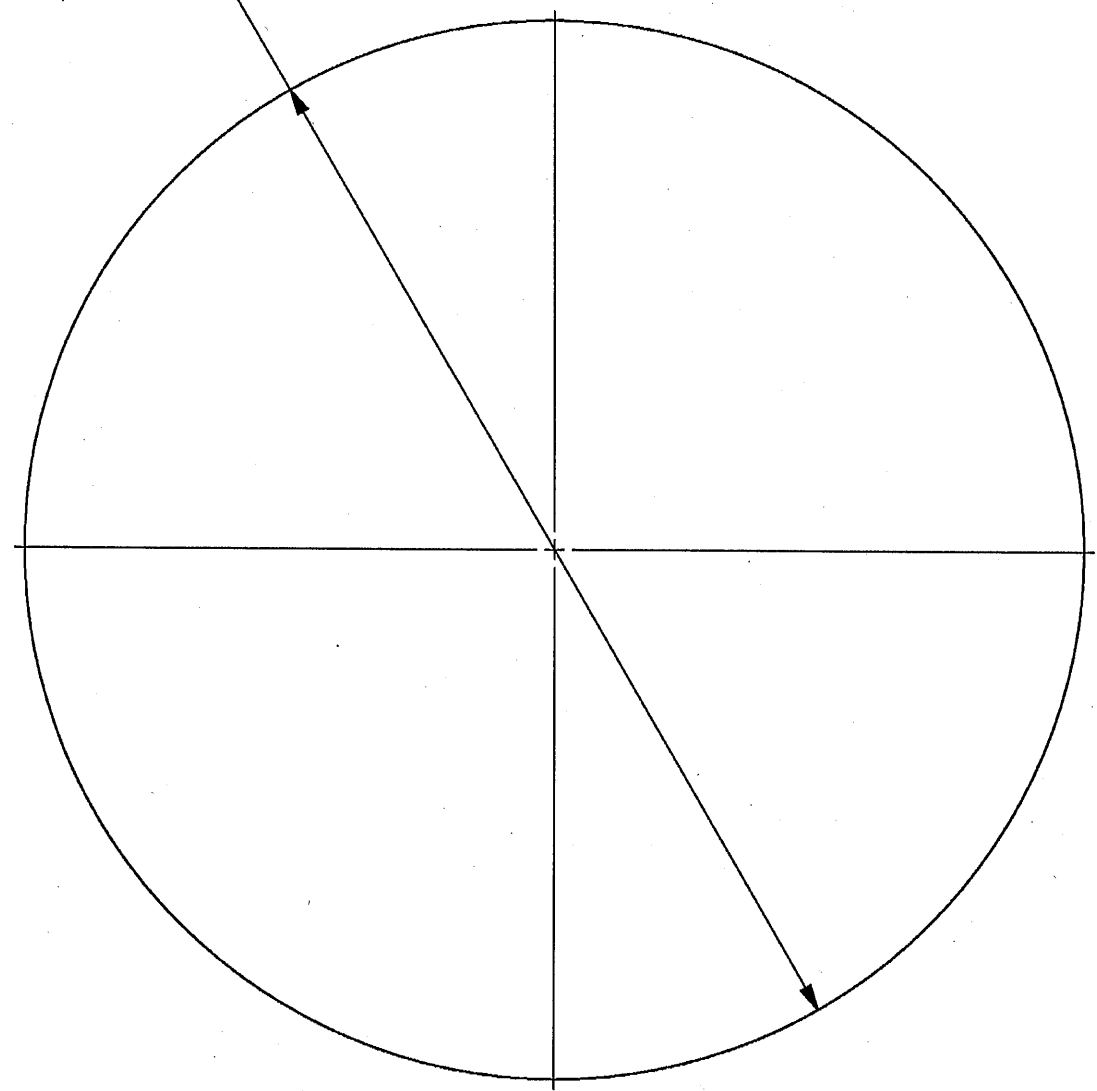
REV	ECO	DESCRIPTION	DATE	APVD
01		Freeze	11-Jul-12	
02		Restricted	25-Dec-13	
--	T00120	Identical To Previous Released	20-Sep-18	L. Goldshtein

THIS DOCUMENT AND THE INFORMATION CONTAINED IN IT ARE PROPRIETARY AND CONFIDENTIAL TO OFT. NO PERSON OR ENTITY IS ALLOWED TO COPY, REPRINT, REPRODUCE OR PUBLISH ANY PART OF THIS DOCUMENT, NOR DISCLOSE ITS CONTENTS TO OTHERS, NOR MAKE ANY USE OF IT, NOR ALLOW OR ASSIST OTHERS TO MAKE ANY USE OF IT UNLESS BY THE PRIOR WRITTEN EXPRESS AUTHORIZATION OF OFT AND THEN ONLY TO THE EXTENT AUTHORIZED.  
COPYRIGHT-OFT.

NOTES :

1. INTERPRET THIS DRAWING IAW ASME Y14.100M.
2. MATERIAL: ALUMINUM ALLOY PLATE 6061-T6 PER QQ-A-250/11. (EQUIVALENT ALUMINUM IS PERMITTED AFTER ELBIT APPROVAL).
3. DEBURR AND REMOVE SHARP EDGES APPROX. 0.3X45°.
4. QUALITY ASSURANCE PROVISIONS:  
4.1 QUALITY ASSURANCE PROVISIONS FOR THIS ITEM PER RDMQD00012P.
5. PACKAGING AND PACKING:  
THE FINISHED PART SHALL BE PRESERVED AND PACKAGED IN ACCORDANCE WITH COMMERCIAL PRACTICE.
6. IDENTIFY PER MIL-STD-130 PARA 4.1.B, BY LABELING ITS CONTAINER WITH THE PART NUMBER. CHARACTERS MINIMUM TEXT HEIGHT 1.25 MM.

Ø 293



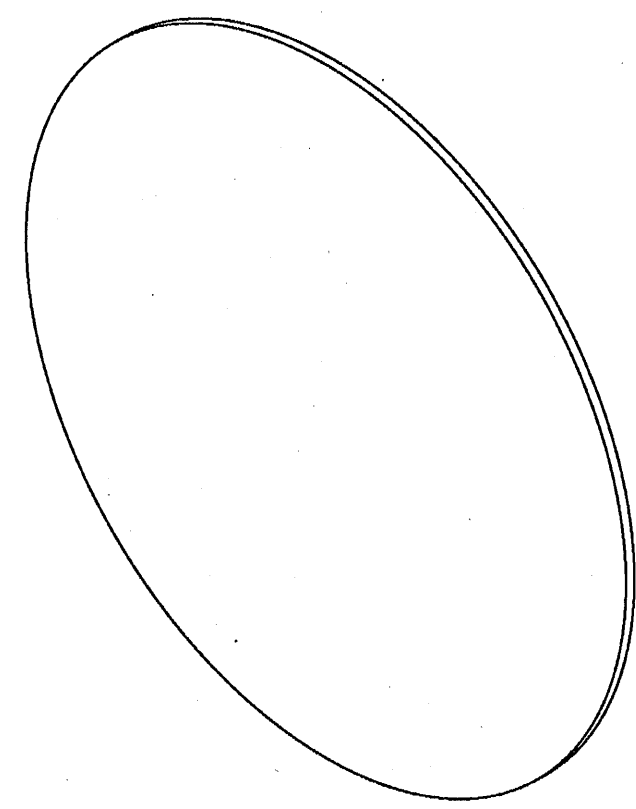
SEE ATTACHED MEDIA

B

B

A

A



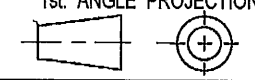
(WEIGHT APPROX.: 0.73 Kg.)

2

6.3/ (✓) (✓)

UNLESS OTHERWISE SPECIFIED	SIGNATURE	DATE
DIMENSIONS ARE IN MM PER ASME Y14.5M -1994	DRAWN	21/12/20
TOLERANCES	CHECKED	
LINEAR ±0.2	HOS/DDO	21/12/20
ANGULAR ±0.5°	OFFICER/PRODN	
1st. ANGLE PROJECTION	OFFICER/QC	
SURFACE TEXTURE IN Micro M	OFFICER/DDO	21/12/20

PROJECT OFFICER



ORDNANCE FACTORY  
TIRUCHIRAPPALLI

TITLE FOR : COVER BLIND, POD, FINISHED  
PLATE 2, BLIND COVER, POD OF: 12.7MM SRCG

SIZE CAGE CODE DWG NO  
B 2291A 065446A-00 --

SCALE 1:2 AUTOMATED DRAWING (SW) SHEET 1 OF 1

PLM Control

1

2

DWG NO 065447A-00

SH 1

1

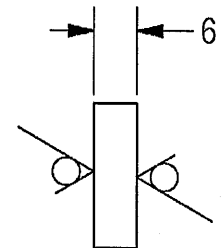
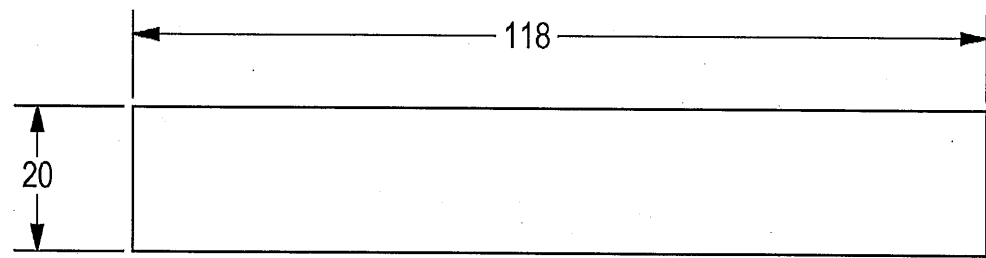
THIS DOCUMENT AND THE INFORMATION CONTAINED IN IT ARE PROPRIETARY AND CONFIDENTIAL TO OFT. NO PERSON OR ENTITY IS ALLOWED TO COPY, REPRINT, REPRODUCE OR PUBLISH ANY PART OF THIS DOCUMENT, NOR DISCLOSE ITS CONTENTS TO OTHERS, NOR MAKE ANY USE OF IT, NOR ALLOW OR ASSIST OTHERS TO MAKE ANY USE OF IT UNLESS BY THE PRIOR WRITTEN EXPRESS AUTHORIZATION OF OFT AND THEN ONLY TO THE EXTENT AUTHORIZED. COPYRIGHT-OFT.

SHEET REV RECORD  
ALL SHEETS ARE THE SAME REVISION

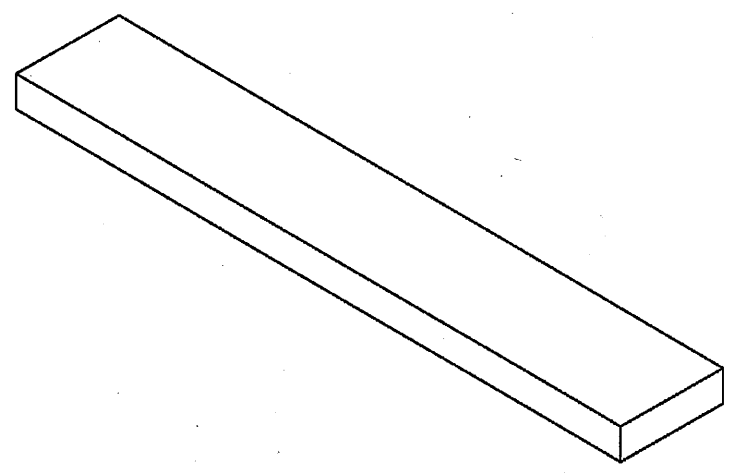
REVISION RECORD				
REV	ECO	DESCRIPTION	DATE	APVD
01		Freeze	11-Jul-12	
02		Restricted	25-Dec-13	
--	T00120	Identical To Previous Released	20-Sep-18	L. Goldshtein

NOTES :

- B**
- INTERPRET THIS DRAWING IAW ASME Y14.100M.
  - MATERIAL: ALUMINUM ALLOY PLATE 6061-T651 PER QQ-A-250/11. (EQUIVALENT ALUMINUM IS PERMITTED AFTER ELBIT APPROVAL).
  - DEBURR AND REMOVE SHARP EDGES APPROX. 0.3X45°.
  - QUALITY ASSURANCE PROVISIONS:  
4.1 QUALITY ASSURANCE PROVISIONS FOR THIS ITEM PER RDMQD00012P.
  - PACKAGING AND PACKING:  
THE FINISHED PART SHALL BE PRESERVED AND PACKAGED IN ACCORDANCE WITH COMMERCIAL PRACTICE.
  - IDENTIFY PER MIL-STD-130 PARA 4.1.B, BY LABELING ITS CONTAINER WITH THE PART NUMBER. CHARACTERS MINIMUM TEXT HEIGHT 1.25 MM.



A



(WEIGHT APPROX.: 0.04 Kg.)

2

6.3 / (V)

SEE ATTACHED MEDIA

UNLESS OTHERWISE SPECIFIED		SIGNATURE	DATE	<b>ORDNANCE FACTORY</b> TIRUCHIRAPPALLI	
DIMENSIONS ARE IN MM PER ASME Y14.5M -1994		DRAWN	21/12/20		
TOLERANCES		CHECKED		TITLE	
LINEAR	ANGULAR	HOS/DDO	21/12/20	FOR: COVER BLIND, POD, FINISHED	
±0.2	±0.5°	OFFICER/PRODN		<b>BLOCK, BLIND COVER, POD</b> OF: 12.7MM SRCG	
1st ANGLE PROJECTION		OFFICER/QC		SIZE	CAGE CODE
		OFFICER/DDO	21/12/20	<b>B</b>	<b>2291A</b>
SURFACE TEXTURE IN Micro M				DWG NO	<b>065447A-00</b>
PROJECT OFFICER	PLM Control			SCALE	1:1
				AUTOMATED DRAWING (SW)	SHEET 1 OF 1

1