

MARKING TO BE EMBOSSED ON CENTRE OF LID IN 20mm LETTERING  
 \* CONTRACTOR'S INITIALS OR RECOGNISED TRADE MARK  
 + YEAR OF MANUFACTURE  
 BOX No.

LIST OF COMPONENTS					
ITEM No.	DESCRIPTION	PART No.	DESIGNER'S REF	DS CAT No.	No PER SET
1	BODY	ISV 553A	ARDE 2174, SHT 3	NOT APPLICABLE	1
2	LID	ISV 553A	ARDE 2174, SHT 3	"	1
3	SPRING CLIP	ISV 708	CIA/AMN/120, DET 2	"	2
4	HINGE	ISV 710	CIA/AMN/120, DET 4	"	2
5	HANDLE	ISV 712	CIA/AMN/ 4-13	"	2
6	HANDLE CLIP	ISV 713	CIA/AMN/ 4-14	"	2
7	STUD	ISV 709	CIA/AMN/120, DET 3	"	2
8	STRENGTHENING PLATE	N D	NOT APPLICABLE	"	2

**MATERIAL :-**  
 STEEL CONFORMING TO ANY ONE OF THE FOLLOWING SPECS.  
 I. IS:1079-1988 REAFFIRMED IN 1992 CD. Fe 330 HOT ROLLED AND ANNEALED  
 II. IS:513-1982 REAFFIRMED IN 1992 COLD ROLLED AND ANNEALED BEST SURFACE TYPE 'D'  
 LID AND BODY 1mm THICK

**PAINTING & PROTECTIVE TREATMENT:**  
 AFTER CLEANING & INSPECTION THE BOX INCLUDING ALL STEEL FITTINGS WILL BE PHOSPHATED OR GALVANISED OR ALUMINIUM SPRAYED OR COATED WITH PAINT RFLU PRIMING RED OXIDE, ZINC CHROME, AMMUNITION, AIR DRYING, MATT FINISH BRUSHING/SPRAYING TO SPEC. JSS. 1.03 FOLLOWED BY A FINISHING COAT OF READY MIXED PAINT AIR DRYING, BRUSHING/SPRAYING/DIPPING MATT FINISH TO SPEC IS:168-1973 REAFFIRMED IN 1991 WITH AMENDMENT No.3. SHADE OF PAINT WILL BE AS INDICATED IN THE SCHEDULE OF ORDER. THE PAINT MUST BE APPLIED EVENLY AND EACH COAT MUST BE THOROUGHLY DRY BEFORE THE APPLICATION OF THE NEXT COAT.

RIVETS SHOULD BE M 5 FLAT HEAD Ø 5 TO SPEC IS:2998-1982 REAFFIRMED IN 1992 WITH AMENDMENT No 3 IN PLATED AS PER SPEC IS:1359-1982 SH 205.

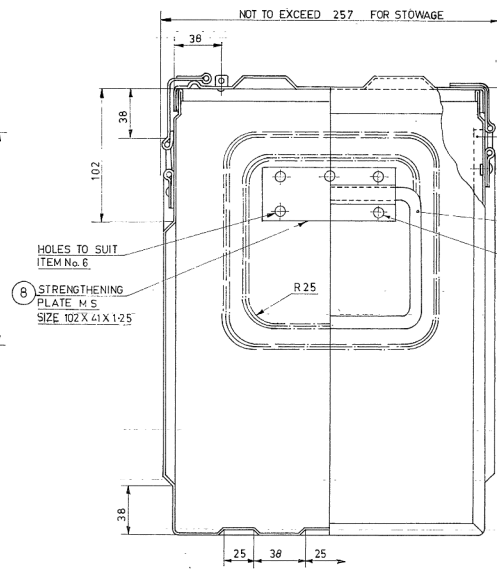
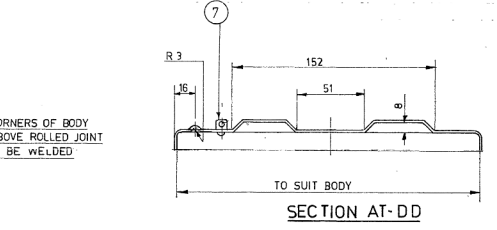
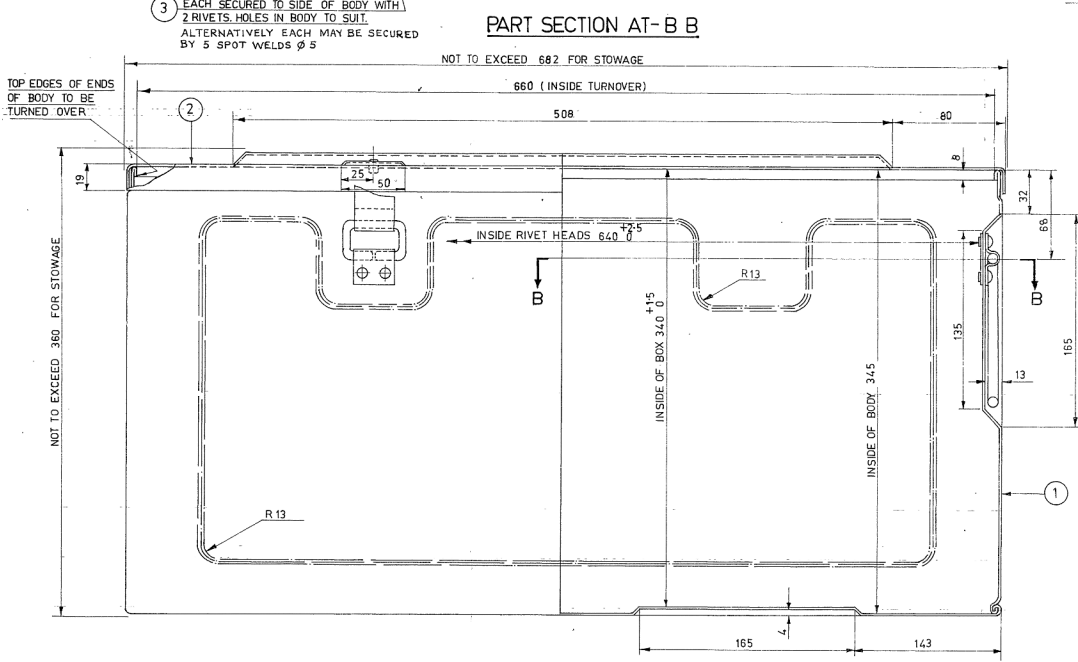
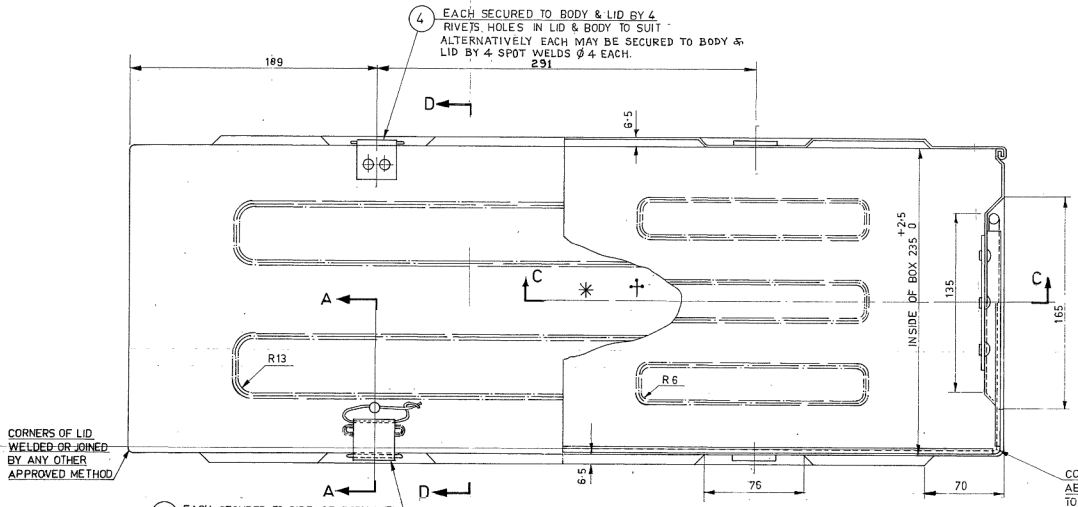
**IMPORTANT -**  
 ON COMPLETION OF THE EMPTY BOX & BEFORE DELIVERY THE SPRING CLIP MUST BE SECURED WITH A PIECE SOFT WIRE Ø 0.5 TO 1.0 TO PREVENT DAMAGE DURING TRANSIT.

FOLDED JOINT STOPPED AT ABOUT 25.0 FROM TOP OF BODY AND REMAINING PART OF CORNER JOINT BUTTED AND WELDED.

5 HANDLE MUST BE FREE FIT IN HANDLE CLIP.

6 EACH SECURED TO END OF BODY BY 5 RIVETS. HOLES IN BODY TO SUIT. ALTERNATIVELY EACH MAY BE SECURED BY 10 SPOT WELDS Ø 5 AND ARC WELDED AT THE CORNERS AND CENTRE OF THE PLATE.

NOTE:- CARE MUST BE TAKEN WHEN ASSEMBLING CATCHES ON BOX TO ENSURE THAT HAND PRESSURE WILL BE REQUIRED TO FASTEN AND UNFASTEN THEM.



PART SECTION AT-C C

PART SECTION AT-A A

9-2-85	DC 35707-A	NOTE "ONE PROVISIONAL" TAP DELETED	DRN. KYG	CHD. 2/2	TRD KYG	COMP.	ASSY. DRG.	
9-12-84	D.C. 35867-A	NOV IN CLATURE AMENDED	CD	PASSED	SCALE NTS		DESIGN AUTHORITY	
5-8-84	DC 35763-A	NOTE "ONE PROVISIONAL" TAP ADDED.	APPROVED		EST. MASS.		ARDE PUNE - 411021	
16.7.84	DC 35751-A	DRG. SEALED. PROV.			G.AUGE SCHD. NOT APPLICABLE			
R. NO.	DATE	AUTHORITY	REVISION	ZONE	AHSP/ D.O. SIGN	MATL: AS ABOVE	DESIGNER'S REF. ARDE 2174	
DRG SEALED: 16-7-84 (PROV)							PROTECTIVE FINISH: AS ABOVE	FOR CQA(A)
							APPROVED	DESIGNER'S REF. ARDE 2174
								PART No. ISV 553A
								D. S. CAT. No. NOT APPLICABLE
								A.H.S.P. C.Q.A(A) KIRKEE.

AMN. CONTAINER BOX B 9A  
 STEEL FOR AMN CONT ASSY. 156 A