

4

3

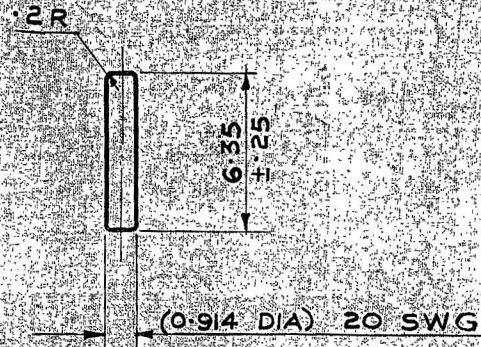
2

1

FOR EXPLANATION OF DIMENSIONING, ETC., SEE NOTES
THIRD ANGLE PROJECTION DIMENSIONS ARE IN mm

PART No.
IQX 605

NOTE—1. TOLERANCE ON UNTOLERANCED DIMENSIONS—
FOR ONE DECIMAL PLACE ± 0.3
FOR TWO OR MORE DECIMAL PLACES ± 0.13
2. ALL BURRS & SHARP EDGES TO BE REMOVED.



LOAD ON SHEAR WIRE IN SINGLE SHEAR 26 ± 1 kg

MATERIAL—BRASS WIRE HARD DRAWN B.S. 2873—1963 CZ 119

D.S. CAT. NO. 1390-000324

ASSY. DRG. IQX 60A

INSP. INSTRS.

27-6-67 DCI 34168-A

D.S. CAT. NO. ADDED

DRAWN CHECKED TRACED TRN. CHD.

12-10-73 DCI 30874-A

DRG. PR. OV. SEALED

PILLAY *[Signature]* J.S.B. *[Signature]*

8-8-73

TRACED WITHOUT CHANGE

CHIEF D'MAN *[Signature]* GROUP OFFICER *[Signature]*

DATE AUTHORITY ZONE NATURE SIG

APPROVED *[Signature]* LT COL FOR DIRECTOR

AMENDMENTS

SEALED 13-10-73

DATE: 12-4-73

MATERIAL AS ABOVE

PROTECTIVE FINISH

ARDE 1633 *[Signature]*

ESTIMATED WEIGHT

DETAIL No. 13 16 out of 73 for CIA

SCALE 4:1

PART No.

WIRE SHEAR LOCKING WEIGHT

IQX 605

C. I. (A) KIRKEE