

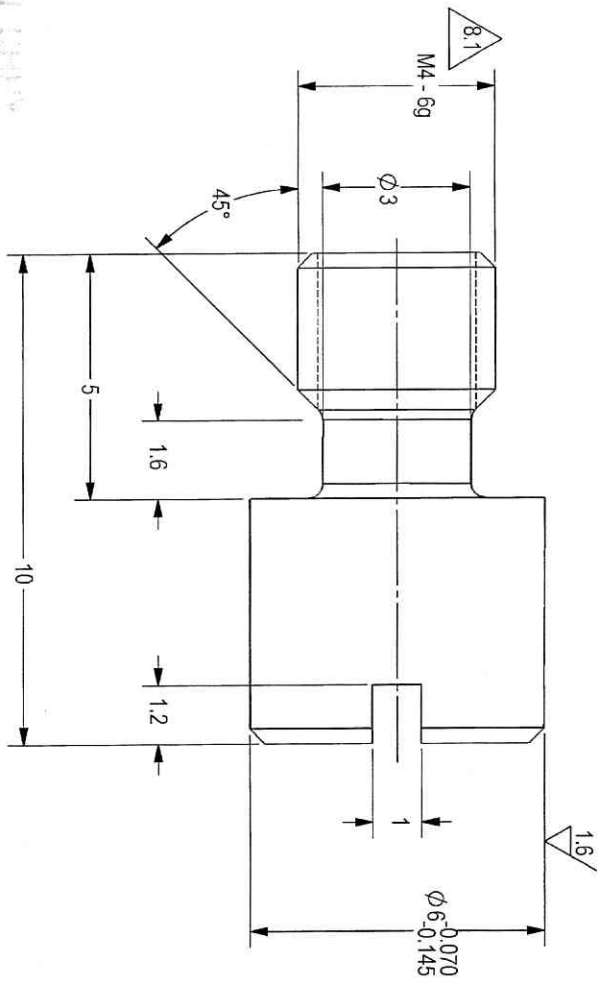
42021, 7490315206

2

THIS DOCUMENT AND THE INFORMATION CONTAINED HEREIN ARE PROPRIETARY AND CONFIDENTIAL TO ODT. NO PERSON OR ENTITY IS ALLOWED TO COPY, REPRODUCE, REPRODUCE OR PUBLISH ANY PART OF THIS DOCUMENT, NOR DISCLOSE ITS CONTENTS TO OTHERS, NOR MAKE ANY USE OF IT, NOR ALLOW OR ASSIST OTHERS TO MAKE ANY USE OF IT UNLESS BY THE PRIOR WRITTEN EXPRESS AUTHORIZATION OF ODT AND THEN ONLY TO THE EXTENT AUTHORIZED.
 COPYRIGHT-ODT.

NOTES:

1. INTERPRET THIS DRAWING IAW ASME Y14.100M.
2. MATERIAL: ALLOY STEEL BAR RND SAE 4130 NORMALIZED PER SAE-AMS-S-6758 OR SAE 4340 NORMALIZED PER SAE-AMS-S-5000
3. UNLESS OTHERWISE SPECIFIED, UNDEFINED MACHINED FILLET RADI SHALL BE 0.2, 0.3.
4. DEBURR AND REMOVE SHARP EDGES, APPROX. 0.2X45 Deg.
5. ALL DIMENSIONS ARE AFTER HEAT TREATMENT AND BEFORE COATING.
6. GENERAL TOLERANCES ACCORDING TO ISO 2768-m.
7. HEAT TREATMENT TO 35-3 HRC PER AMS 2759/1.
8. COATING: A DRY FILM LUBRICATION IN A FLUOROPOLYMER ORGANIC RESIN CLASS 2 COLOR MATTE BLACK TYPE I: 5-13 MICRON THICK PER VS-1-3-1-166 (OR EQUIVALENT).
- 8.1. PROTECT THREAD AFTER PHOSPHATE.
9. QUALITY ASSURANCE PROVISIONS:
 9.1. QUALITY ASSURANCE PROVISIONS FOR THIS ITEM PER RDM000012P.
10. PARENTHEICAL FIGURES ARE FOR REFERENCE ONLY.
11. PACKAGING AND PACKING:
 THE FINISHED PART SHALL BE PRESERVED AND PACKAGED IN ACCORDANCE WITH MANUFACTURERS BEST COMMERCIAL PRACTICE.
12. IDENTIFY PER MIL-STD-130 PARA 4.1.B, BY LABELING ITS CONTAINER WITH THE PART NUMBER, CHARACTERS MINIMUM TEXT HEIGHT 1.25 MM.



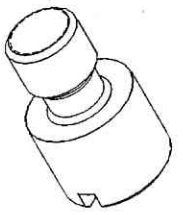
DWG NO: 066425A-00	
SHEET REV RECORD	
ALL SHEETS ARE THE SAME REVISION	

REV	ECO	DESCRIPTION	DATE	APVD
01		Freeze	06-Sep-12	
02		Freeze	28-Nov-13	
03		Restricted	28-May-14	L. Goldstein
04	VY57/20	Restricted	18-Sep-14	P. Nave
TOP0961 Identical To Previous		Released	09-Apr-18	L. Goldstein

26-11-2020

32 / (1.6)

SEE ATTACHED MEDIA



(WEIGHT: 0.002 Kg APPROX.)

UNLESS OTHERWISE SPECIFIED		DRAWN		SIGNATURE		DATE	
DIMENSIONS ARE IN MM PER ASME Y14.5M-1994		CHECKED		[Signature]		10/08	
TOLERANCES		ANGULAR		HOS/DDO		3/1/20	
LINEAR		SEE NOTE 6		OFFICER/PRODN			
SEE NOTE 6		1st ANGLE PROJECTION		OFFICER/QC			
SURFACE TEXTURE IN Micro Meter		OFFICER/RDIO		OFFICER/QC			
PROJECT OFFICER		PLM Control		[Signature]		9/9	
TITLE		PIN KEY		SCALE		AUTOMATED DRAWING (SW)	
ORDNANCE FACTORY TRUCHARAPALLI		B 2291A		10:1		SHEET 1 OF 1	
FOR: LIMITER ASSY		CAGE CODE		DWG NO			
OF: 12.7MM SRGG		066425A-00					

2

1