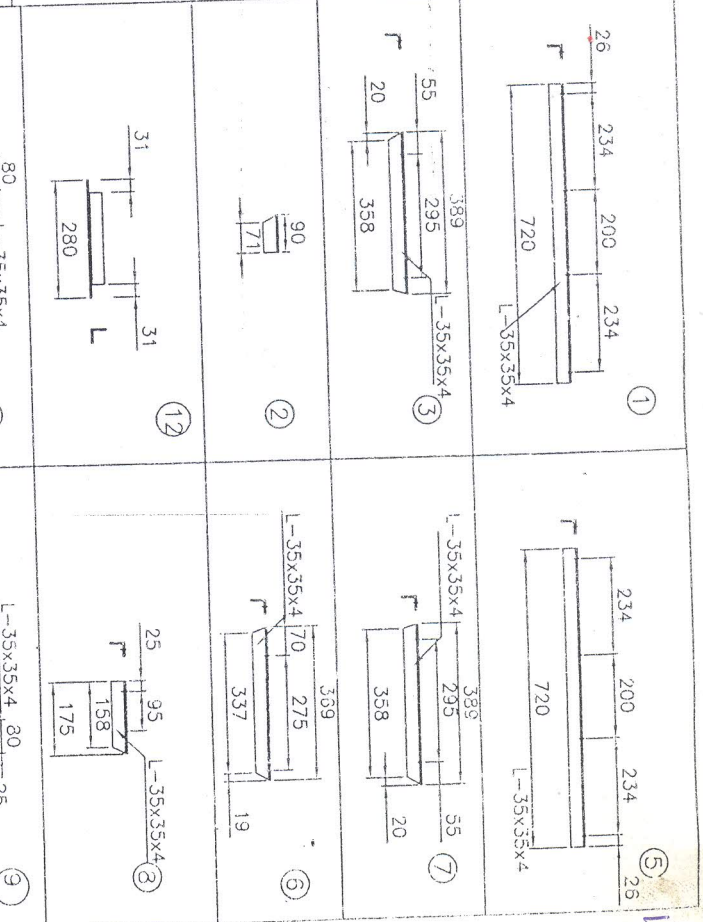
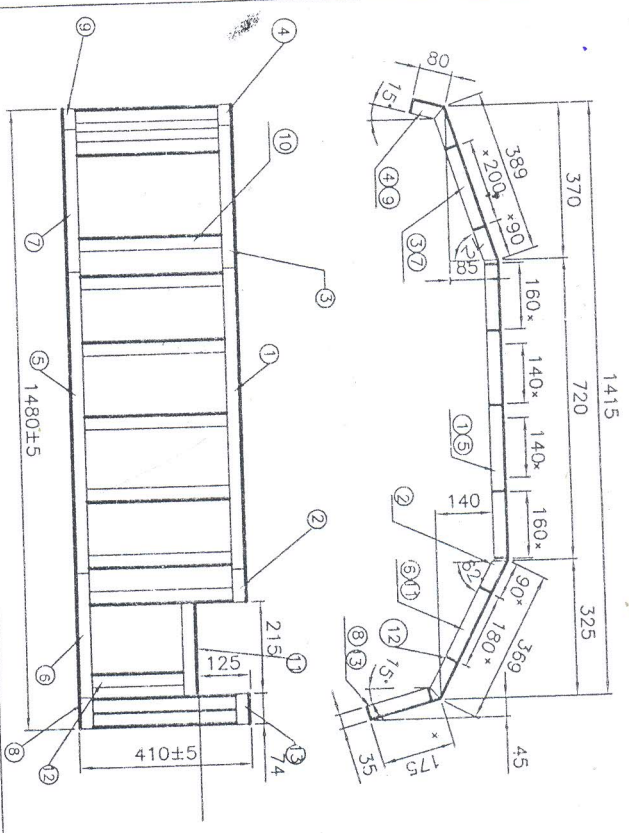
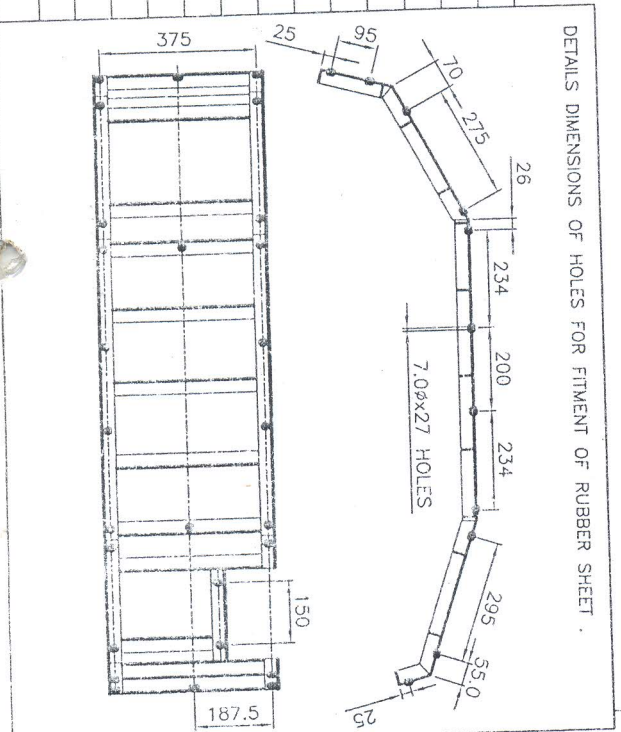


QTY./VEH = 01 NOS.



- NOTE:
1. ALL DIMENSIONS ARE IN MM.
 2. UNSPECIFIED LIMIT DEVIATIONS ARE ±0.5mm.
 3. COMPLETELY ASSEMBLY IS TO IN WELDED AS SHOWN IN THE DRAWING.
 4. DIMENSIONS WITH MARK (*) ARE GIVEN FOR REFERENCE ONLY.
- * MATERIAL: ANGLE 35x35x4, IS: 808

13	ANGLE	01	35x35x4x158
12	ANGLE	01	35x35x4x280
11	ANGLE	01	35x35x4x279
10	ANGLE	11	35x35x4x400L
09	ANGLE	01	35x35x4x80L
08	ANGLE	01	35x35x4x175L
07	ANGLE	01	35x35x4x390L
06	ANGLE	01	35x35x4x370L
05	ANGLE	01	35x35x4x720L
04	ANGLE	01	35x35x4x80L
03	ANGLE	01	35x35x4x390L
02	ANGLE	01	35x35x4x30L
01	ANGLE	01	35x35x4x720L



NOTE: PILOT SAMPLE TO BE APPROVED BY V.F.I. BEFORE COMMENCEMENT OF BULK PRODUCTION

ITEM	DESCRIPTION	NO OFF	MATL	TREAT/SIZE	REMARKS
1	MUD GUARD ASSY. FRONT LHS				
2	UPGRADED MPV 4X4				

INDEX: DIMS. TOL
 0-30 +0.1
 30.250 +0.2
 250-800 +0.3
 800-2500 +0.5
 >2000 +0.8

ALTERNATE: UPGRADED MPV 4X4
 JWM/ODC
 ADV/ODC: *[Signature]*
 SCALED: 1:1
 DATE: 14-3-13

REF DRG. NO. 510-01-1010-1
 REPLACED BY: [Blank]
 REPLACEMENT FOR: [Blank]

VEHICLE FACTORY JABALPUR
 DRG. NO. 2143-57-31
 1/1 SHIT

104